



UNSER BOULEVARD N.W.

GENERAL NOTES

- EXISTING UTILITY LINES ARE SHOWN IN AN APPROXIMATE MANNER ONLY AND MAY BE INCOMPLETE OR OBSOLETE. SUCH LINES MAY OR MAY NOT EXIST WHERE SHOWN OR NOT SHOWN. ALL UTILITIES SHOULD BE FIELD VERIFIED AND LOCATED BY THE CONTRACTOR PRIOR TO COMMENCEMENT OF ANY CONSTRUCTION. THE CONTRACTOR IS FULLY RESPONSIBLE FOR ANY AND ALL DAMAGE CAUSED BY ITS FAILURE TO LOCATE, IDENTIFY AND PRESERVE ANY AND ALL EXISTING UTILITIES, PIPELINES, AND UNDERGROUND UTILITY LINES.
- CONTRACTOR SHALL NOT USE VIBRATORY COMPACTION EQUIPMENT OR HEAVY VEHICLES OVER EXISTING UTILITIES.
- SITE STORM DRAIN, ELECTRIC LINES & TRANSFORMERS AND GAS LINES ARE SHOWN FOR GENERAL INFORMATION ONLY TO PROVIDE AN OVERVIEW OF SITE UTILITIES AND POTENTIAL CONFLICTS. SEE MECHANICAL PLANS FOR GAS LINE SIZING. SEE CG-101 FOR STORM DRAIN DESIGN.
- ALL WATER FITTINGS SHALL HAVE JOINT RESTRAINTS (LT). SEE RESTRAINED JOINT CRITERIA NOTES THIS SHEET. (LT) LENGTH SHOWN ON KEYED NOTES.
- ALL ABOVE GROUND UTILITY EQUIPMENT AND FITTINGS SHALL BE PAINTED IN COLORS TO MATCH BUILDING COLORS.

**DEKKER
PERICH
SABATINI**

7601 JEFFERSON NE, SUITE 100
ALBUQUERQUE, NM 87109

505.761.9700 / DPSDESIGN.ORG

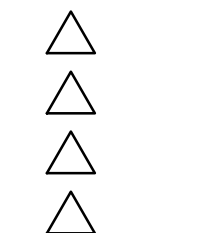
ARCHITECT

ENGINEER

PROJECT

NUEVO ATRISCO
CENTRAL & UNSER
ALBUQUERQUE, NM

REVISIONS



DRAWN BY DEC

REVIEWED BY FCA

DATE 6/18/2018

PROJECT NO. 17-0153

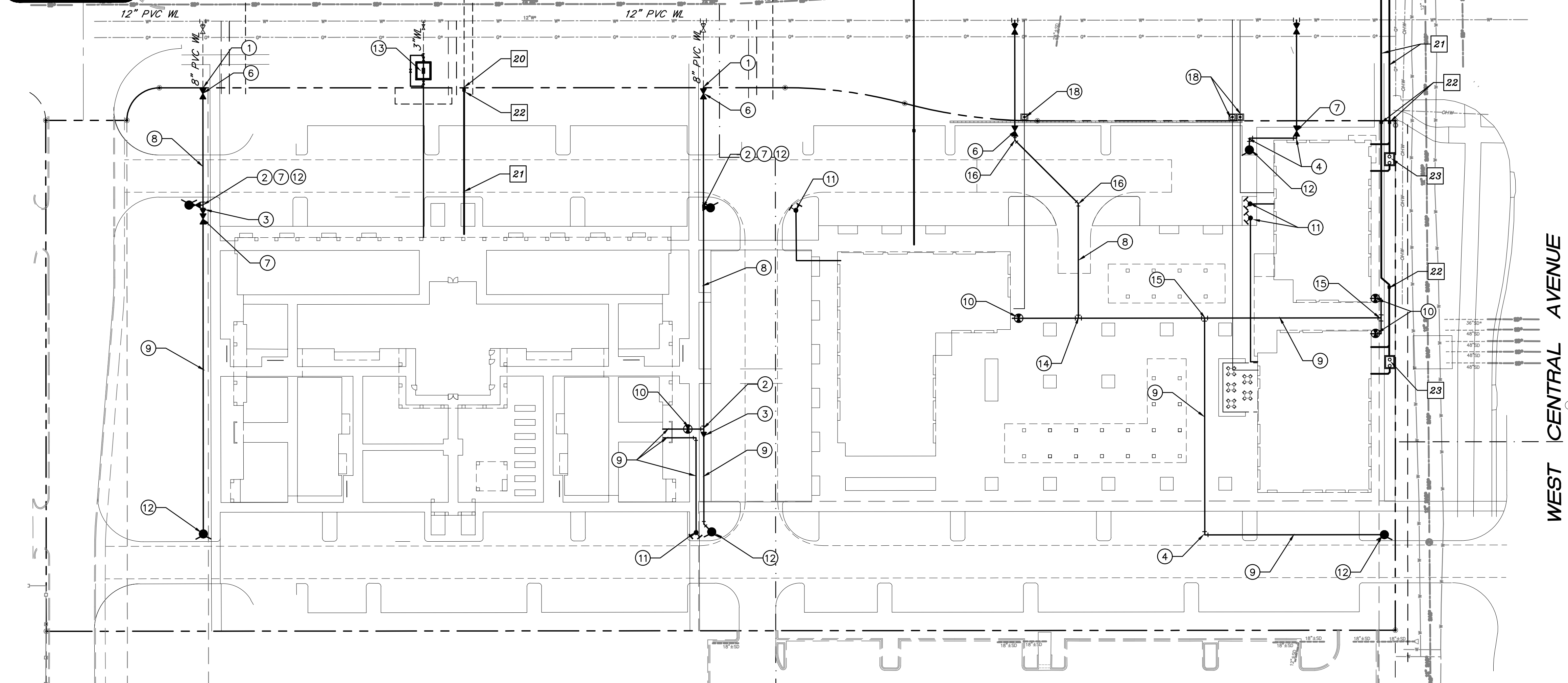
DRAWING NAME

CONCEPTUAL
UTILITY PLAN

SHEET NO.

CU-101

OF



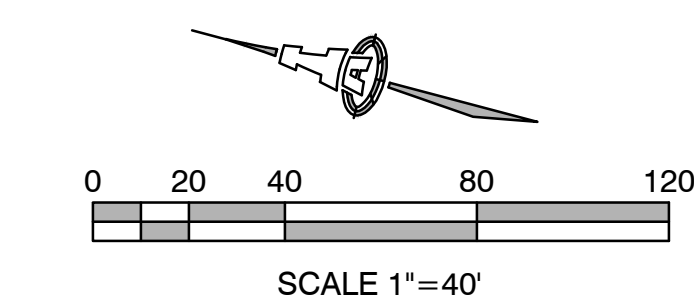
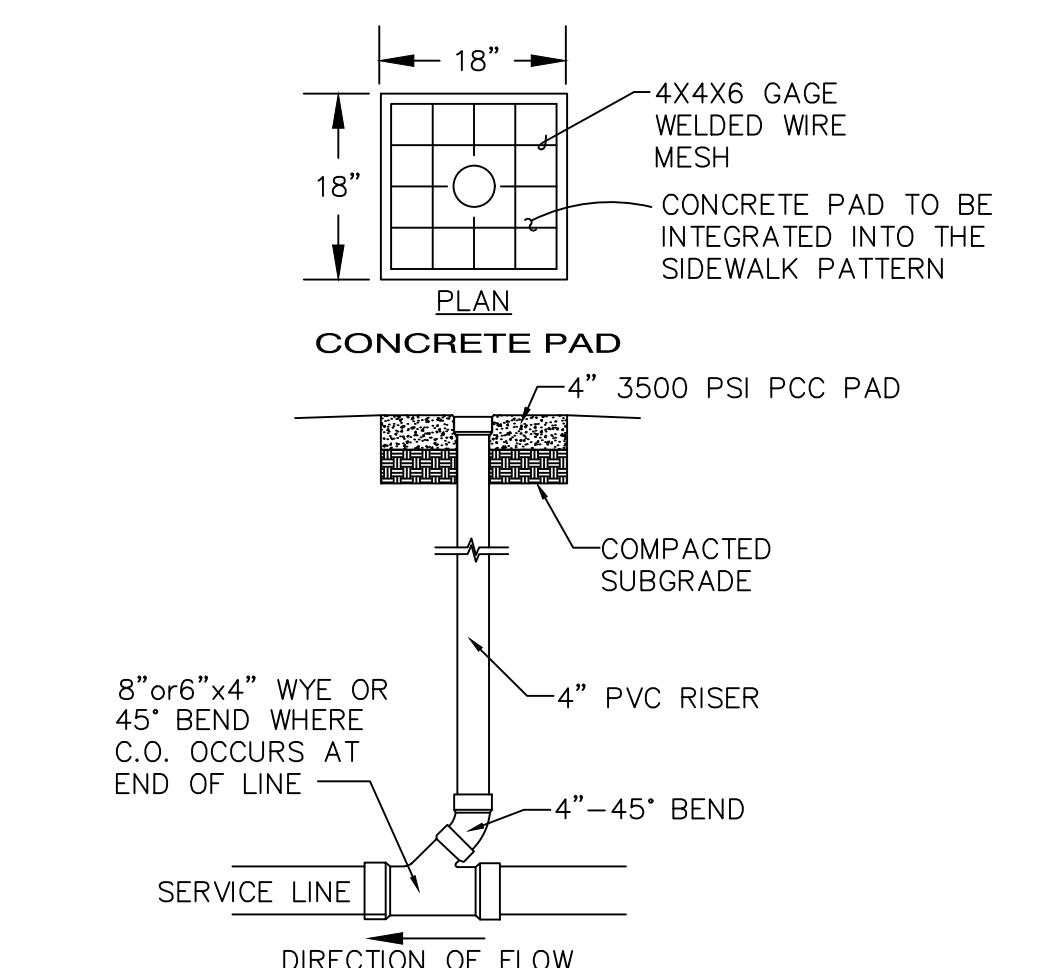
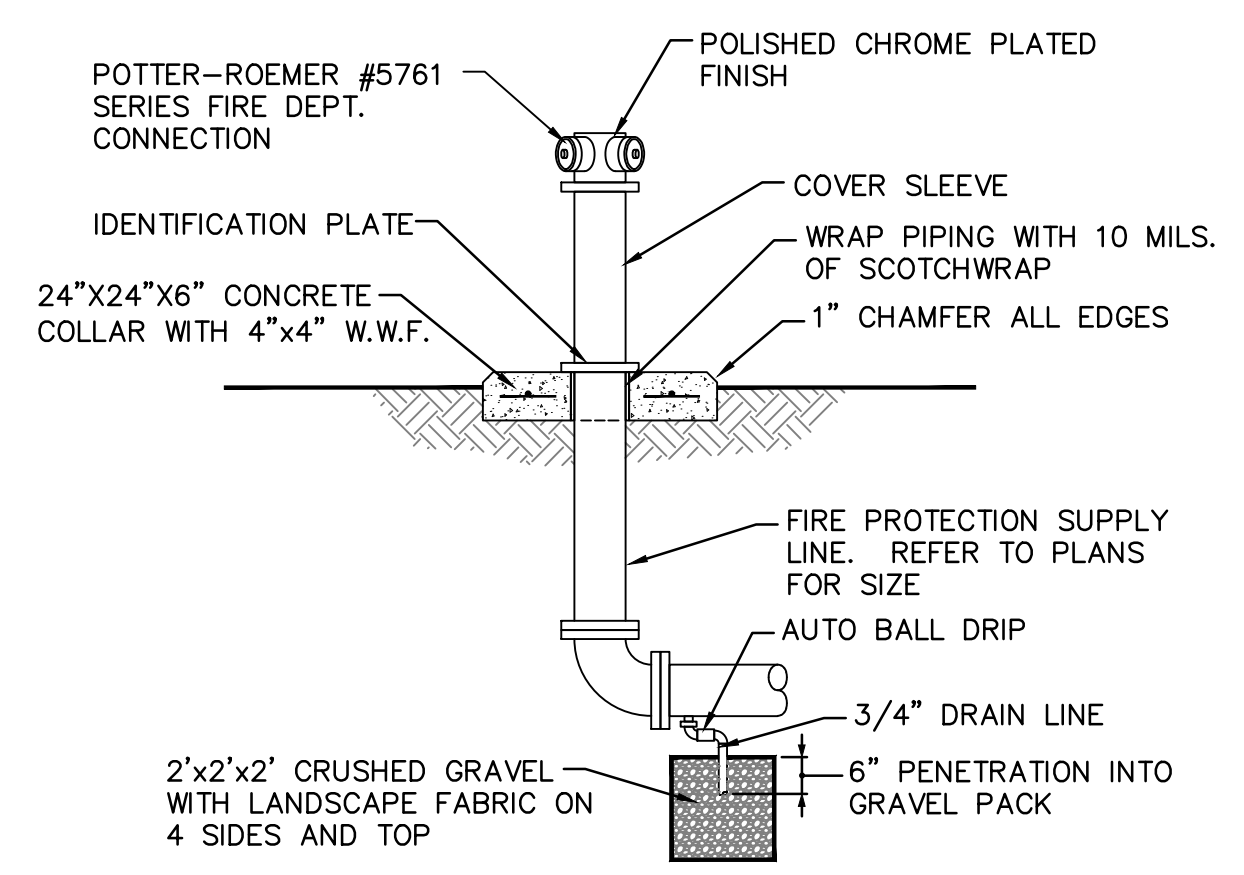
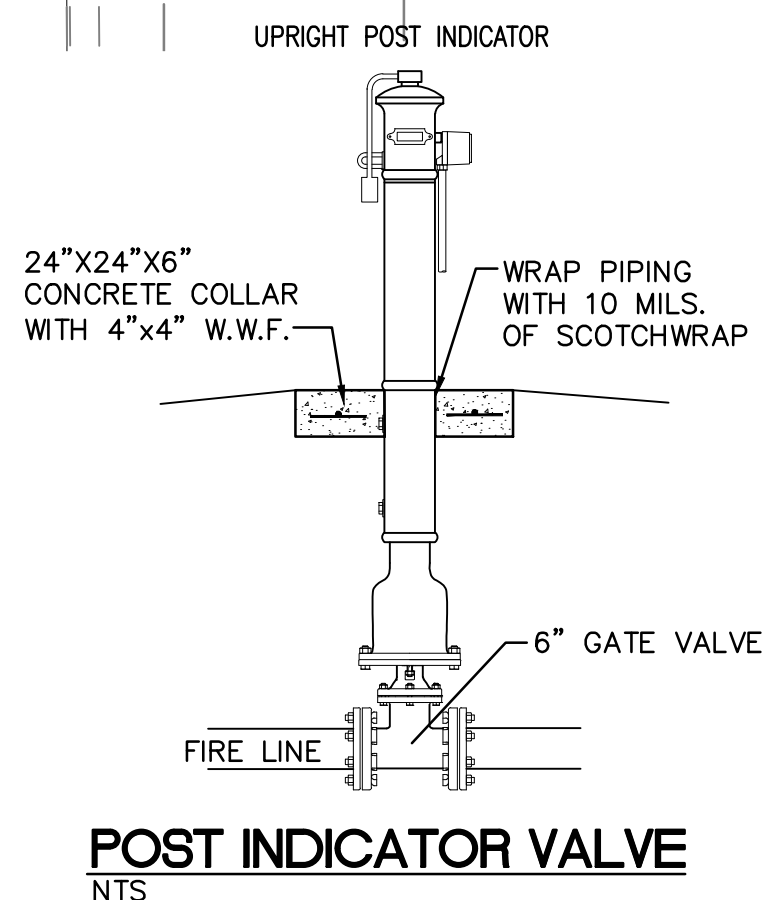
WEST CENTRAL AVENUE

KEYED NOTES

- WATER KEYED NOTES**
- CONNECT NEW 8" WATERLINE TO EXISTING 8" WATERLINE.
 - 8"x6" TEE.
 - 8"x6" REDUCER. (LT=31')
 - 6" 90° BEND. (LT=20')
 - 6" 45° BEND. (LT=9')
 - 8" GATE VALVE W/ BOX. PER ABCWA STD DWG 2326 & 2329. (LT=60')
 - 6" GATE VALVE W/ BOX PER ABCWA STD DWG 2326 & 2329. (LT=46')
 - 8" WATERLINE.
 - 6" WATERLINE.
 - 6" POST INDICATOR VALVE (PIV). (LT=46')
 - 6" FIRE DEPARTMENT CONNECTION (FDC).
 - FIRE HYDRANT PER ABCWA STD DWG 2340.
 - 3" METERED SERVICE LINE WITH VAULT INSTALLATION PER ABCWA STD. DWGS. 2370.
 - 8"x8" TEE
 - 6"x6" TEE
 - 8" 45° BEND. (LT=11')
 - 2" WATER METER SETTING PER ABCWA STD DWG 2363.
- SEWER**
- CONNECT NEW 6' SAS SERVICE LINE TO EXISTING SAS STUB.
 - 6" SANITARY SEWER LINE, AT 2% MIN. SLOPE.
 - SANITARY SEWER CLEAN OUT.
 - GREASE INTERCEPTOR.

RESTRAINED JOINT CRITERIA FOR WATERLINE FITTINGS

- ALL MECHANICAL JOINTS SHALL BE RESTRAINED AT THE FITTINGS PER KEYED NOTES THIS SHEET.
 - THE CONTRACTOR SHALL PROVIDE A MINIMUM PIPE LENGTH OF 20 LF FROM ALL MECHANICAL JOINTS. ALL PIPE JOINTS WITHIN 20 LF OF A MECHANICAL JOINT SHALL BE RESTRAINED AT THE CONTRACTOR'S EXPENSE.
 - THE CONTRACTOR SHALL RESTRAIN ALL PIPE JOINTS IN THE SPECIFIED DISTANCE LISTED IN THE KEYED NOTES.
 - THE CONTRACTOR SHALL RESTRAIN ALL FIRE HYDRANT JOINTS FROM THE TEE ON THE MAIN TO THE FIRE HYDRANT FLANGE.
- DEPTH OF BURY: 3.0 FT. MINIMUM
- FACTOR OF SAFETY:
- MATERIAL: PVC
- SOIL TYPE: GM/GM - SILTY GRAVELS AND SILTY SANDS, GRAVEL-SAND-SILT MIXTURES.
- TEST PRESSURE: 150 PSI
- TRENCH TYPE 4: PIPE BEDDED IN SAND, GRAVEL, OR CRUSHED STONE TO DEPTH OF 1/8 PIPE DIAMETER, 4 INCH MINIMUM; BACKFILL COMPACTED TO TOP OF PIPE.
- DIFFERENT CRITERIA, E.G., GREATER DEPTH OF BURY, ETC., WILL REQUIRE DIFFERENT RESTRAINED LENGTHS. THESE MUST BE CALCULATED BY A QUALIFIED PROFESSIONAL ENGINEER AND APPROVED BY ABCWA.



ISAACSON & ARFMAN, P.A.
Consulting Engineering Associates
128 Monroe Street N.E.
Albuquerque, New Mexico 87108
Ph. 505-268-8828 www.iacivil.com