

**DEKKER
PERICH
SABATINI**

7601 JEFFERSON NE, SUITE 100
ALBUQUERQUE, NM 87109

505.761.9700 / DPSDESIGN.ORG

ARCHITECT

ENGINEER

PROJECT

NUEVO ATRISCO
7909 CENTRAL AVE, NW
ALBUQUERQUE, NM 87121

REVISIONS
△
△
△
△

DRAWN BY

REVIEWED BY

DATE 08-17-2018

PROJECT NO. 18-0087

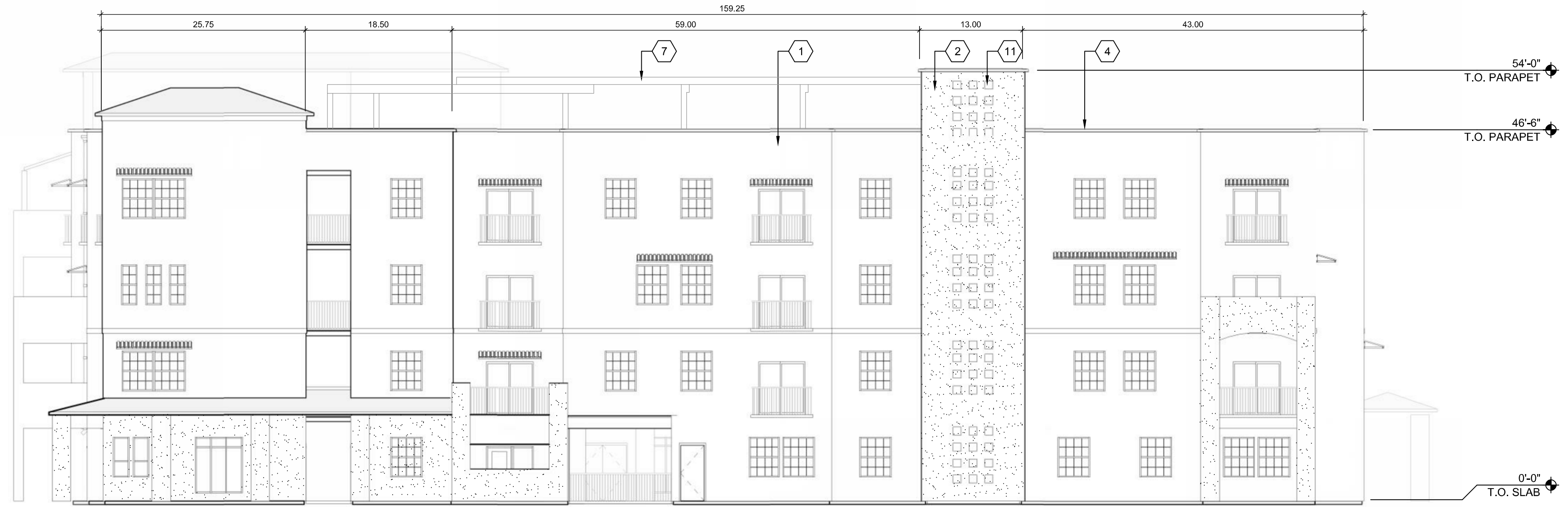
DRAWING NAME

EXTERIOR
ELEVATIONS
(BUILDING C)

SHEET NO.

SDP5-3

OF



D5 NORTH ELEVATION
3/32" = 1'-0"



B5 EAST ELEVATION
3/32" = 1'-0"

GENERAL NOTES

- ALL ROOF MOUNTED MECHANICAL EQUIPMENT SHALL BE SCREENED BY PARAPET WALLS AND NOT BE VISIBLE WHEN VIEWED FROM 5' ABOVE GRADE AT ANY PROPERTY LINE.

BUILDING DESIGN

GROUND FLOOR HEIGHT: 5-11(E)(1)
IN ANY MIXED-USE ZONE DISTRICT IN UC-MS-PT AREAS, THE GROUND FLOOR OF PRIMARY BUILDINGS FOR DEVELOPMENT OTHER THAN LOW-DENSITY RESIDENTIAL DEVELOPMENT SHALL HAVE A MINIMUM HEIGHT OF 12 FEET.

WINDOW CALCULATIONS: 5-11(E)(2)(B)

BUILDING	REQUIRED	PROVIDED
BUILDING A		
GROUND FLOOR: SOUTH FACADE	60%	60%
GROUND FLOOR: EAST FACADE	60%	60%
BUILDING B		
GROUND FLOOR:	60%	65%
2ND FLOOR:	30%	36%
BUILDING C		
GROUND FLOOR:	60%	60%
UPPER FLOORS:	30%	32%

SHEET KEYED NOTES

- STUCCO FINISH (COLOR 1)
- STUCCO FINISH (COLOR 2)
- STUCCO FINISH (ACCENT COLOR)
- METAL COPING
- ALUMINUM STOREFRONT (CLEAR GLASS)
- STANDING SEAM METAL ROOF
- SHADE STRUCTURE
- JULIET BALCONY
- GUARDRAIL - STEEL
- PATIO DOOR
- ACCENT OPENING