

**DEKKER
PERICH
SABATINI**

7601 JEFFERSON NE, SUITE 100
ALBUQUERQUE, NM 87109

505.761.9700 / DPSDESIGN.ORG

ARCHITECT

ENGINEER

PROJECT

NUEVO ATRISCO
CENTRAL & UNSER
ALBUQUERQUE, NM

REVISIONS

- △
- △
- △
- △

DRAWN BY

REVIEWED BY

DATE 3/30/2018

PROJECT NO. 17-0153

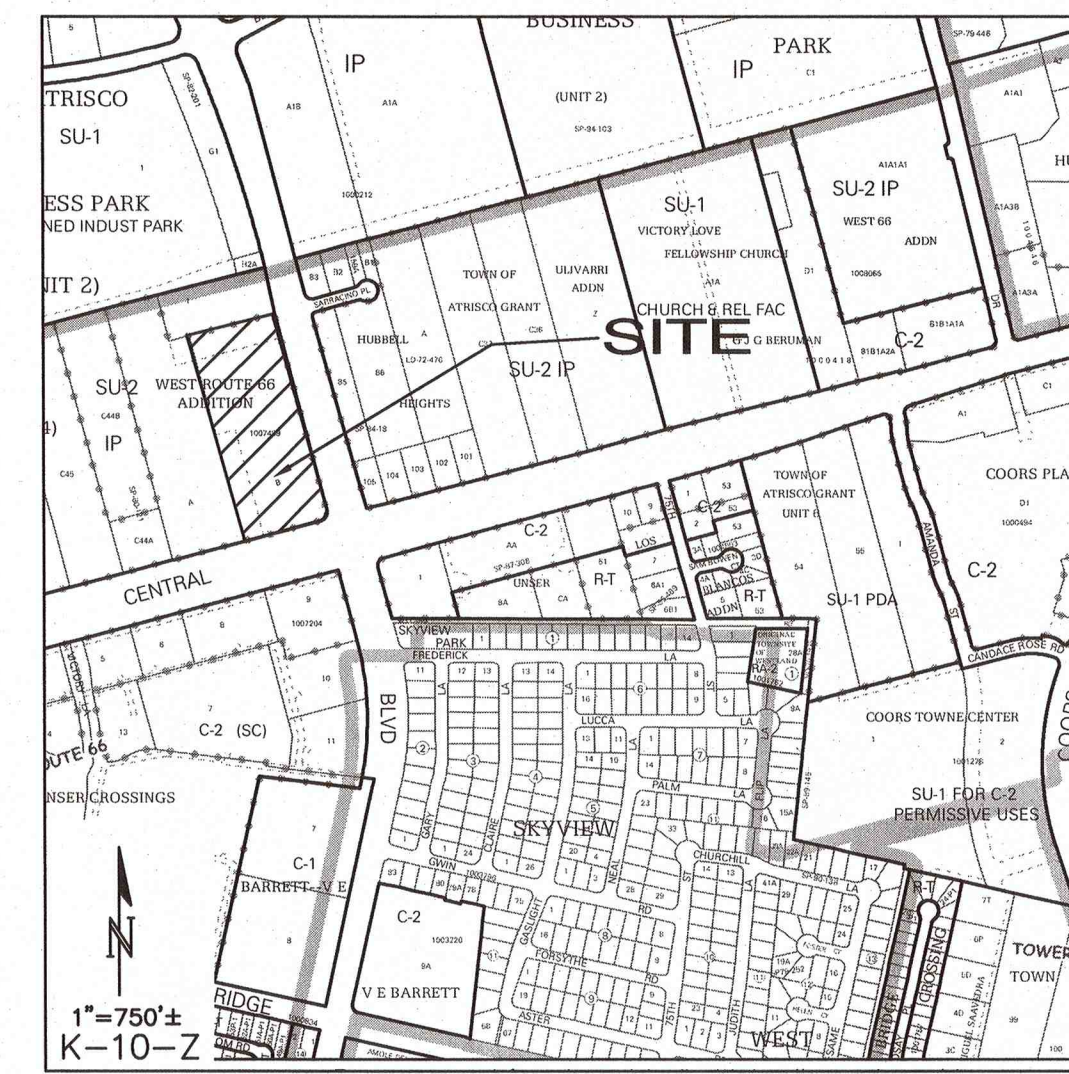
DRAWING NAME

**FIRE HYDRANT
LOCATION
AND ACCESS
PLAN**

SHEET NO.

FIRE 1

OF

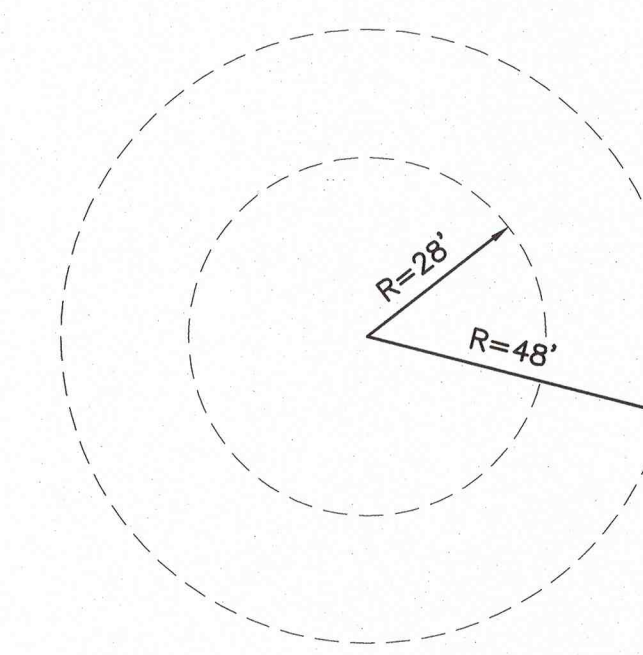


201 UNSER BLVD. N.W.,
ALBUQUERQUE, NM 87121

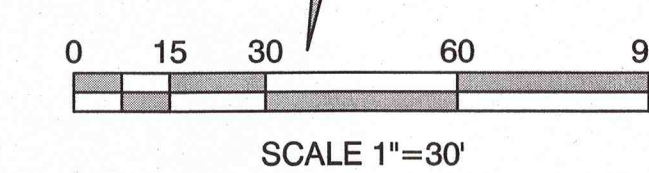
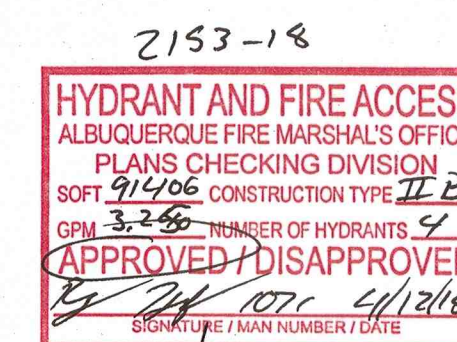
91,406 SQ. FT BUILDING
OCCUPANCY GROUP – RESIDENTIAL GROUP R-2
TYPE 2B CONSTRUCTION
SPRINKLED
55'-9" BUILDING HEIGHT

ALL ACCESS ROADS AND FIRE LANES HAVE
GRADES LESS THAN 10% AND A LOAD
CAPACITY OF 75,000 POUNDS.

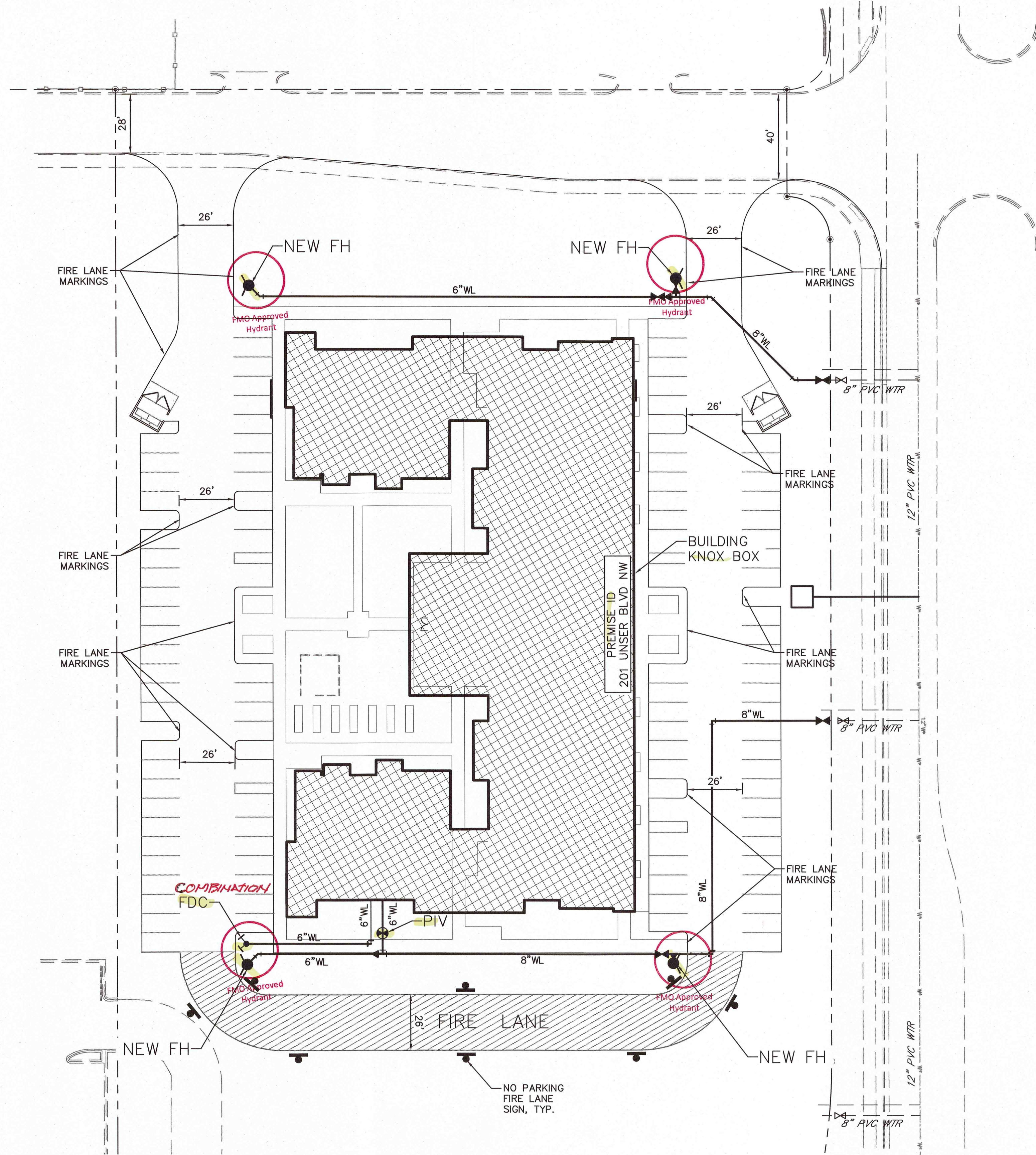
ALL ACCESS ROADS AND FIRE LANES WILL
ACCOMMODATE A 28' MINIMUM TRUCK TURNING
RADIUS



FIRE APPARATUS TURNING RADIUS
1"=30'



ISAACSON & ARFMAN, P.A.
Consulting Engineering Associates
128 Monroe Street N.E.
Albuquerque, New Mexico 87108
Ph. 505-268-8828 www.incivil.com



NO PARKING FIRE LANE SIGN

UNSER BOULEVARD N.W.