

**DEKKER
PERICH
SABATINI**

7601 JEFFERSON NE, SUITE 100
ALBUQUERQUE, NM 87109

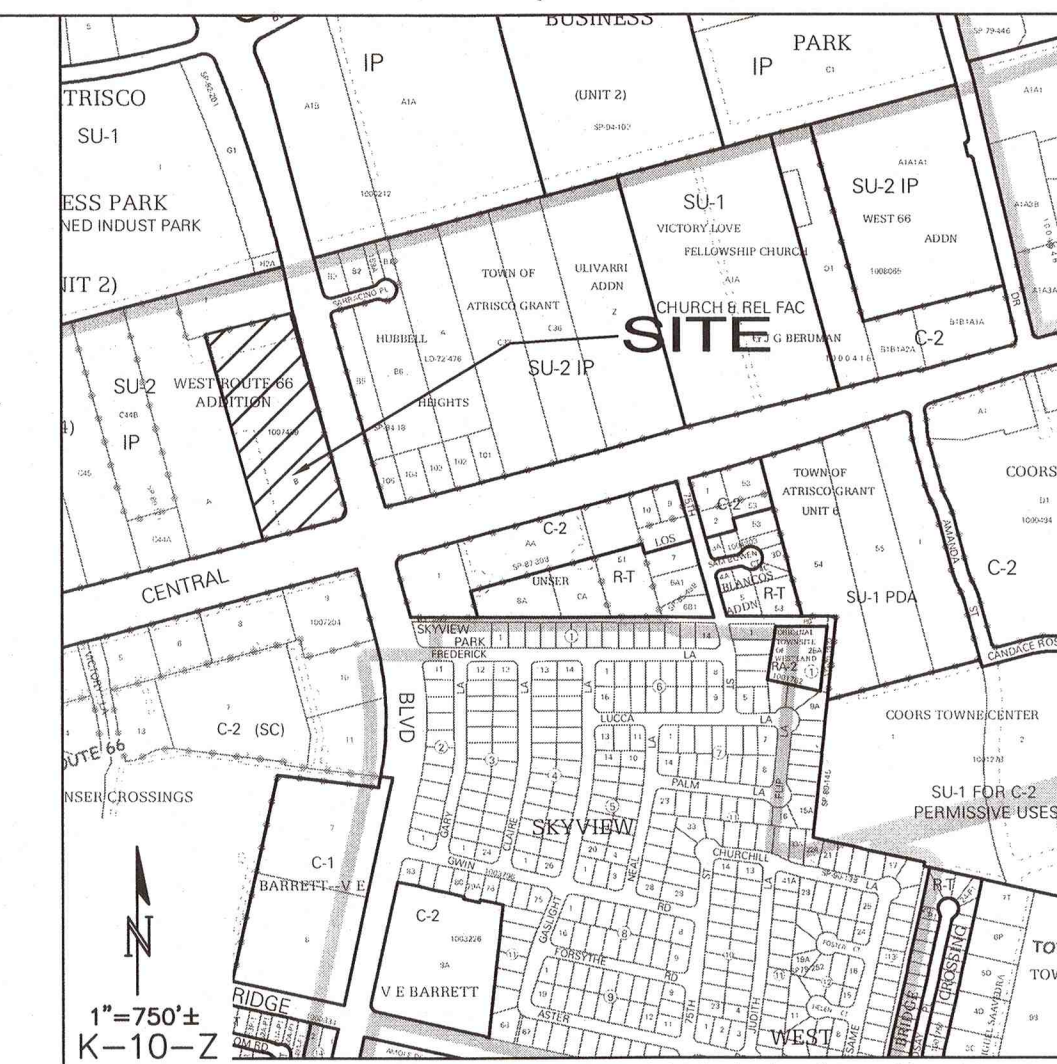
505.761.9700 / DPSDESIGN.ORG

ARCHITECT

ENGINEER

PROJECT

PHASE 2
NUEVO ATRISCO
CENTRAL & UNSER
ALBUQUERQUE, NM



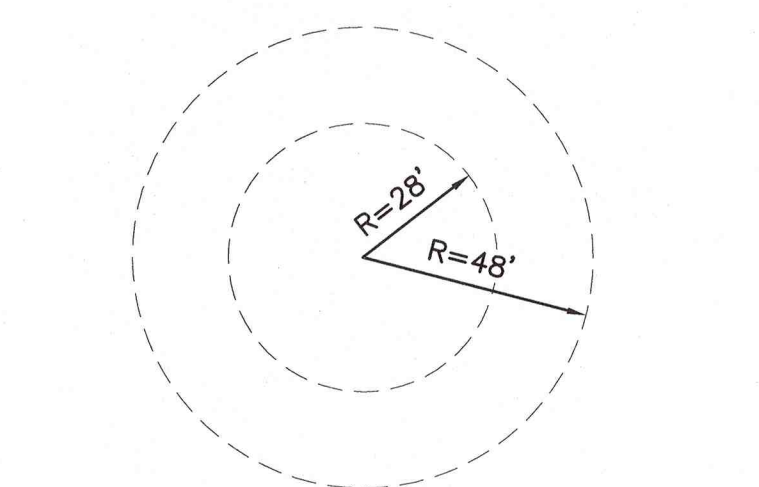
WEST CENTRAL AVE

SARRACINO PL

UNSER BLVD SE

ALL ACCESS ROADS AND FIRE LANES HAVE GRADES LESS THAN 10% AND A LOAD CAPACITY OF 75,000 POUNDS.

ALL ACCESS ROADS AND FIRE LANES WILL ACCOMMODATE A 28' MINIMUM TRUCK TURNING RADIUS

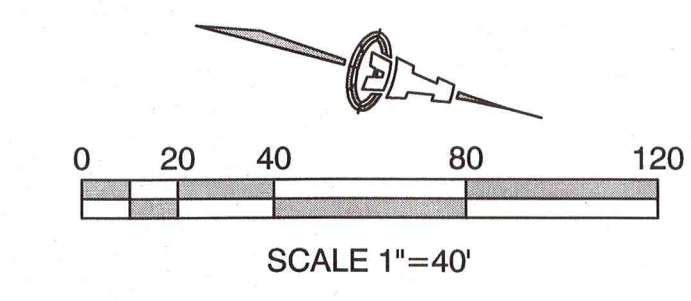
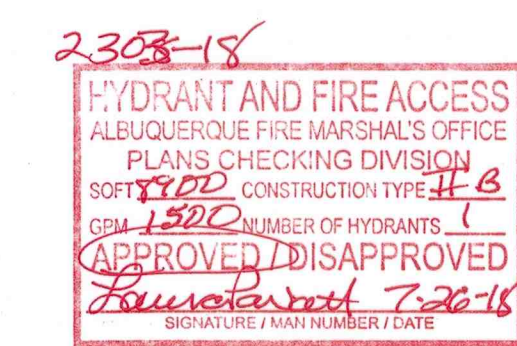


101 UNSER BLVD. N.W.,
ALBUQUERQUE, NM 87121

BUILDING A
5,800 SQ. FT BUILDING
OCCUPANCY GROUP – ASSEMBLY GROUP A-2
TYPE 2B CONSTRUCTION
SPRINKLED
24'-0" BUILDING HEIGHT

BUILDING B
6,800 SQ. FT BUILDING
OCCUPANCY GROUP – ASSEMBLY GROUP A-2
TYPE 2B CONSTRUCTION
SPRINKLED
24'-0" BUILDING HEIGHT

BUILDING C
8,900 SQ. FT BUILDING
OCCUPANCY GROUP – BUSINESS GROUP B
TYPE 2B CONSTRUCTION
SPRINKLED
24'-0" BUILDING HEIGHT



ISAACSON & ARFMAN, P.A.
Consulting Engineering Associates
128 Monroe Street N.E.
Albuquerque, New Mexico 87108
Ph. 505-268-8828 www.iacivil.com

REVISIONS

△	
△	
△	
△	

DRAWN BY	
REVIEWED BY	
DATE	6/18/2018
PROJECT NO.	17-0153
DRAWING NAME	

**FIRE HYDRANT
LOCATION
AND ACCESS
PLAN**

SHEET NO.

FIRE 1

OF