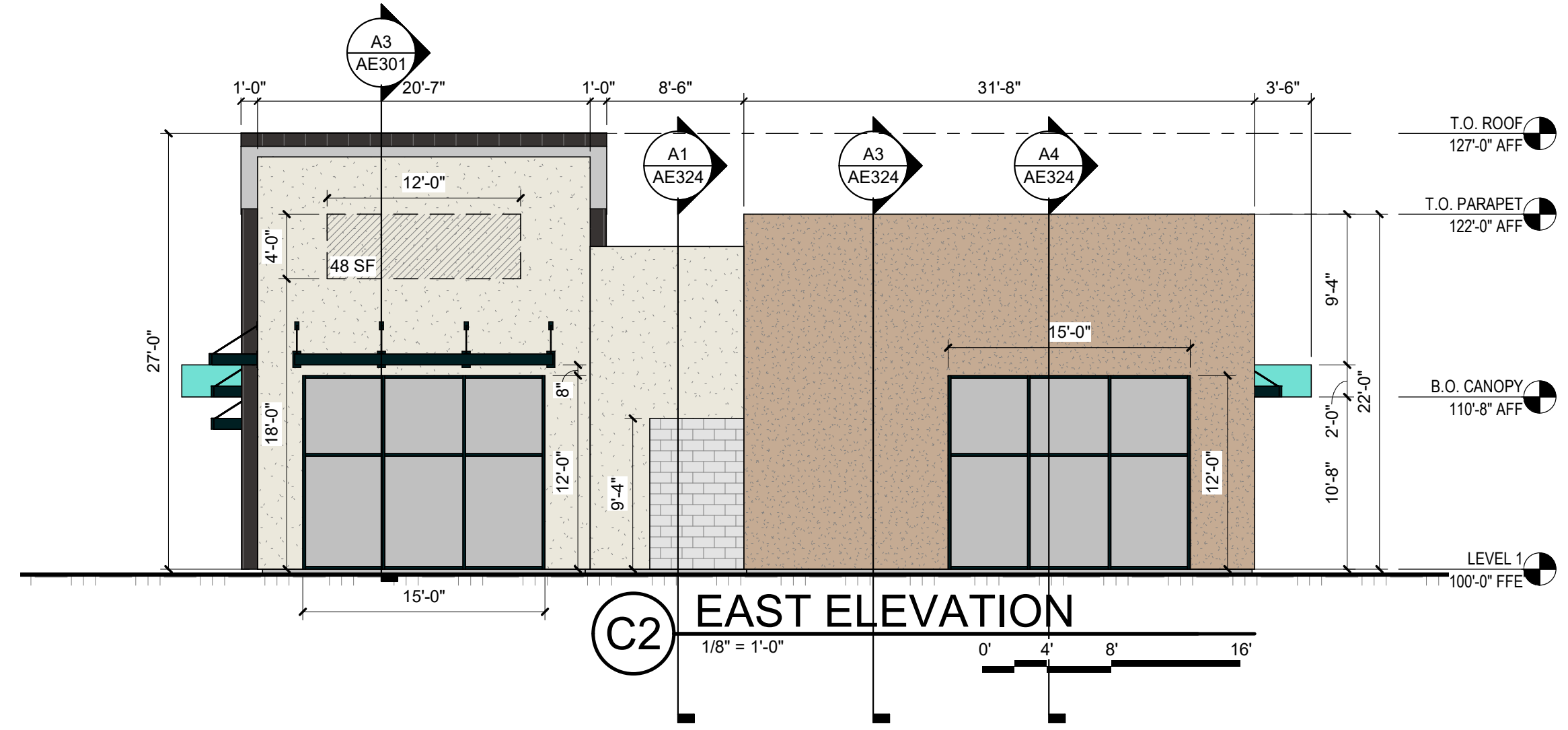
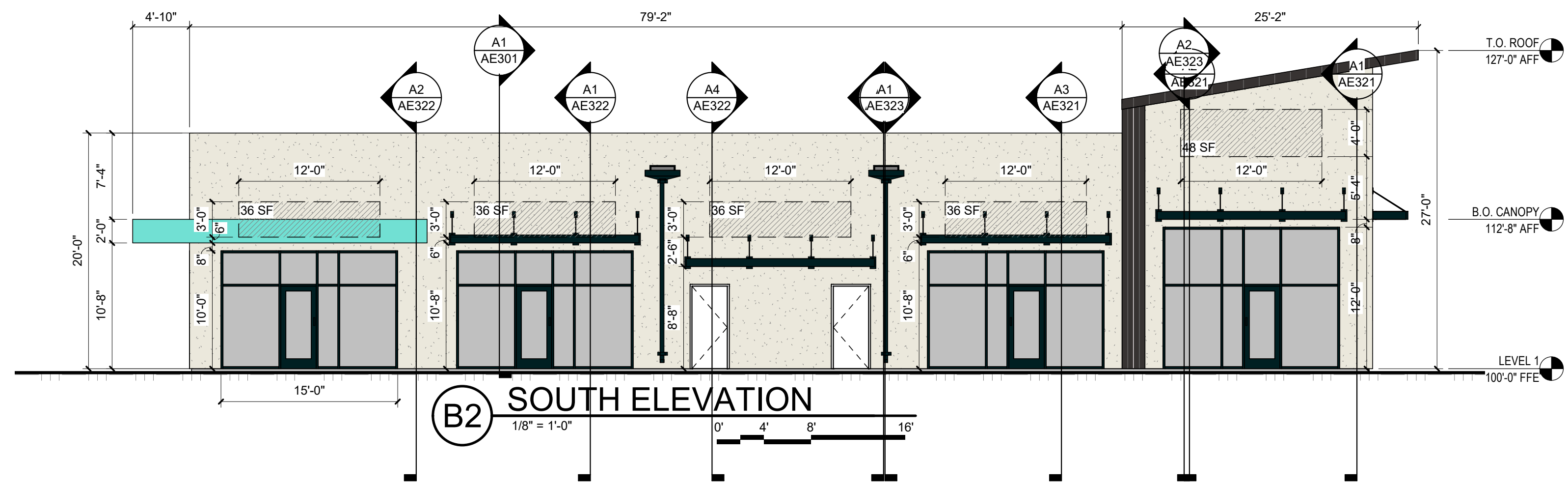


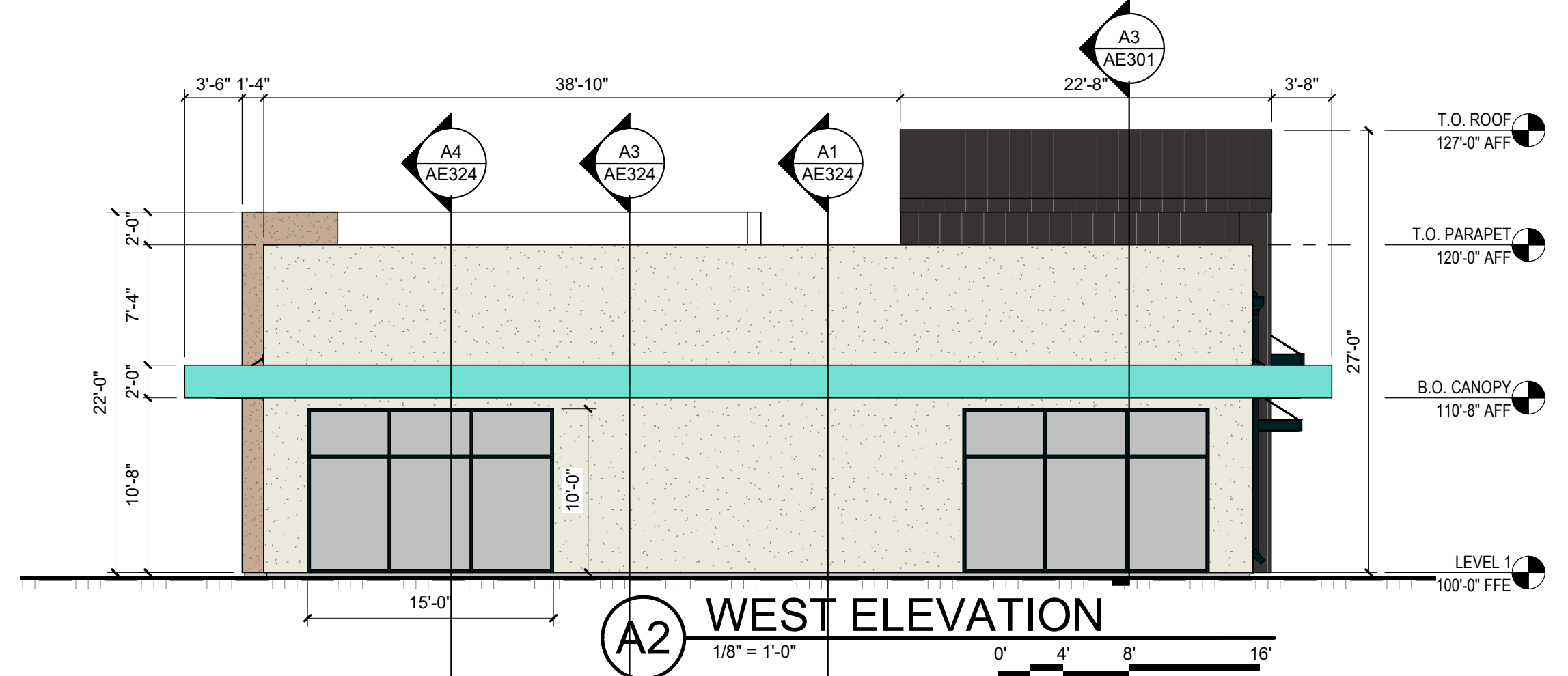
D2 NORTH ELEVATION
1/8" = 1'-0"



C2 EAST ELEVATION
1/8" = 1'-0"



B2 SOUTH ELEVATION
1/8" = 1'-0"



A2 WEST ELEVATION
1/8" = 1'-0"

GENERAL SHEET NOTES

- A. ALL MECHANICAL EQUIPMENT SHALL BE LOCATED ON ROOF; SIZE AND LOCATION TO BE DETERMINED
- B. STREET FACING FACADES CONVEY THE FOLLOWING DESIGN ELEMENTS TO MEET THE DESIGN STANDARDS:
 - TRANSPARENT WINDOWS (CONSTITUTE MINIMUM 50% OF GROUND FLOOR FACADE)
 - CANOPIES/AWNING OVER WINDOWS TO PROVIDE SHADE FROM WEATHER, PRIMARY PEDESTRIAN ENTRANCES.
- C. STREET FACING FACADES LONGER THAN 50 FEET ARE COMPLIANT WITH STANDARDS 5-11(E)(2)(b)4 BY CONVEYING THE FOLLOWING DESIGN FEATURES
 - WALL PLANE PROJECTIONS OR RECESSES OF AT LEAST 1 FOOT IN DEPTH, OCCUR AT LEAST EVERY 50 FEET FOR AT LEAST 25% OF THE TOTAL FACADE
 - CHANGE IN TEXTURE OR MATERIAL OCCURRING EVERY 25 FEET OF FACADE LENGTH FOR AT LEAST 20% OF THE TOTAL FACADE
 - CHANGE IN PARAPET HEIGHT OR ROOF EVERY 50 FEET OF FACADE LENGTH.
- D. EACH STREET-FACING FACADE CONTAINS A MINIMUM OF 30% OF ITS SURFACES IN TRANSPARENT WINDOWS AND/OR DOORS PER SECTION 5-11(E)(2)(b).
- E. PRIMARY BUILDINGS HAVE A MINIMUM CLEAR HEIGHT OF 10 FEET PER SECTION 5-11(E)(1).

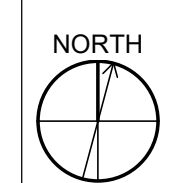
SHEET KEYNOTES

REFERENCE KEYNOTES

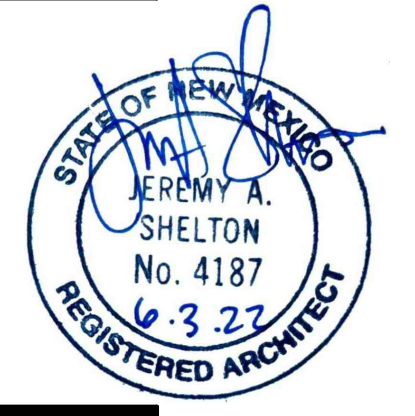
LEGEND

- STUCCO_WHITE COLOR
- STUCCO_EARTHSTONE COLOR
- STANDING SEAM METAL ROOF_ DARK BRONZE
- METAL PANEL_ TURQUOISE
- BUILDING MOUNTED SIGNAGE LIGHTING MATERIALS AND COLORS TO BE DETERMINED

KEY PLAN



**DEKKER
PERICH
SABATINI**



SEAL

PROJECT

Nuevo Atrisco
Unser Blvd + Central Ave NW
Albuquerque, NM 87121

**SITE
DEVELOPMENT
PLAN SET**

REVISIONS

- △
- △
- △
- △
- △

DRAWN BY	KT
REVIEWED BY	KK
DATE	06/03/2022
PROJECT NO:	19-0059.002

DRAWING NAME
EXTERIOR
ELEVATIONS
(BUILDING 2)

SHEET NO
SDP5.20