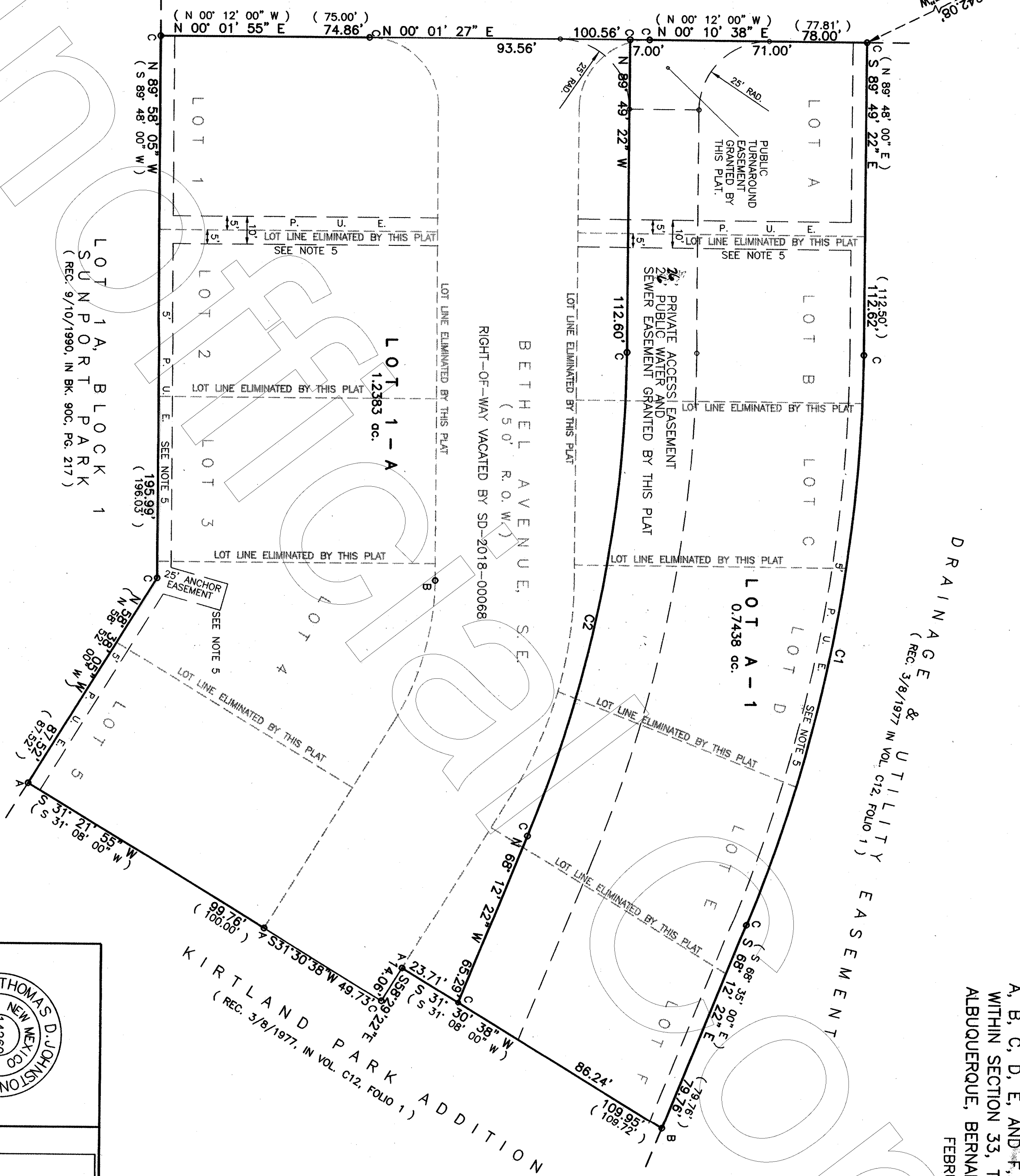


ACS MONUMENT 1"-25'-30"
 X=1477.335 008 US FT
 Y=1524.161 952 US FT
 Ground-to-grid: 0.99678244
 Mapping to grid: -001323.37"
 NAD83 CENTRAL ZONE NAD 83
 NSU Elev = 5041.3 US FT
 NAD 88

MULBERRY STREET, S. E.
 (50' R.O.W.)



CURVE TABLE

CURVE	RADIUS	LENGTH	DELTA	CHORD BEARING	CHORD
C1	562.95'	212.28'	21° 36' 20"	S 78° 56' 52" E	211.03'
(C1)	562.95'	212.39'	---	---	---
C2	474.25'	180.10'	21° 45' 50"	N 78° 56' 27" W	179.07'

DOCH 2020039004
 04/29/2020 01:38 PM Page: 2 of 2
 Linda Stover, Bernalillo County
 COUNTY CLERK RECORDING LABEL HERE

PLAT OF
 LOTS A-1 AND 1-A
 BLOCK 10, UNIT 3, KIRTLAND ADDITION
 A REPLAT OF LOTS 1, 2, 3, 4, AND 5, BLOCK 10, AND LOTS
 A, B, C, D, E, AND F, UNIT 3, KIRTLAND ADDITION
 WITHIN SECTION 33, T. 10 N., R. 3 E., N.M.P.M.
 ALBUQUERQUE, BERNALILLO COUNTY, NEW MEXICO
 FEBRUARY 2019

SCALE: 1 INCH = 30 FEET
 FOUND/SET MONUMENT LEGEND:
 A: FOUND 1-1/2" STEEL PIPE
 B: FOUND PK NAIL AND DISK ON ROCK
 C: SET #4 REBAR WITH CAP WAYJOHN PS 14269"

WAYJOHN SURVEYING INC
 1609 2nd STREET NW
 ALBUQUERQUE, N.M. 87102
 PHONE: (505) 255-2052 FAX: (505) 255-2887

THOMAS D. JOHNSON
 REGISTERED SURVEYOR
 14269
 NEW MEXICO

DRAWN: T R J
 CHECKED: T D J
 DRAWING NO. SP80118.DWG
 FILE NO. SP-7-01-2018
 SHEET 2 OF 2
 LOCATION: SECTION 33, T10N, R3E
 UNIT 3, KIRTLAND ADDITION

2020C-48

(2)