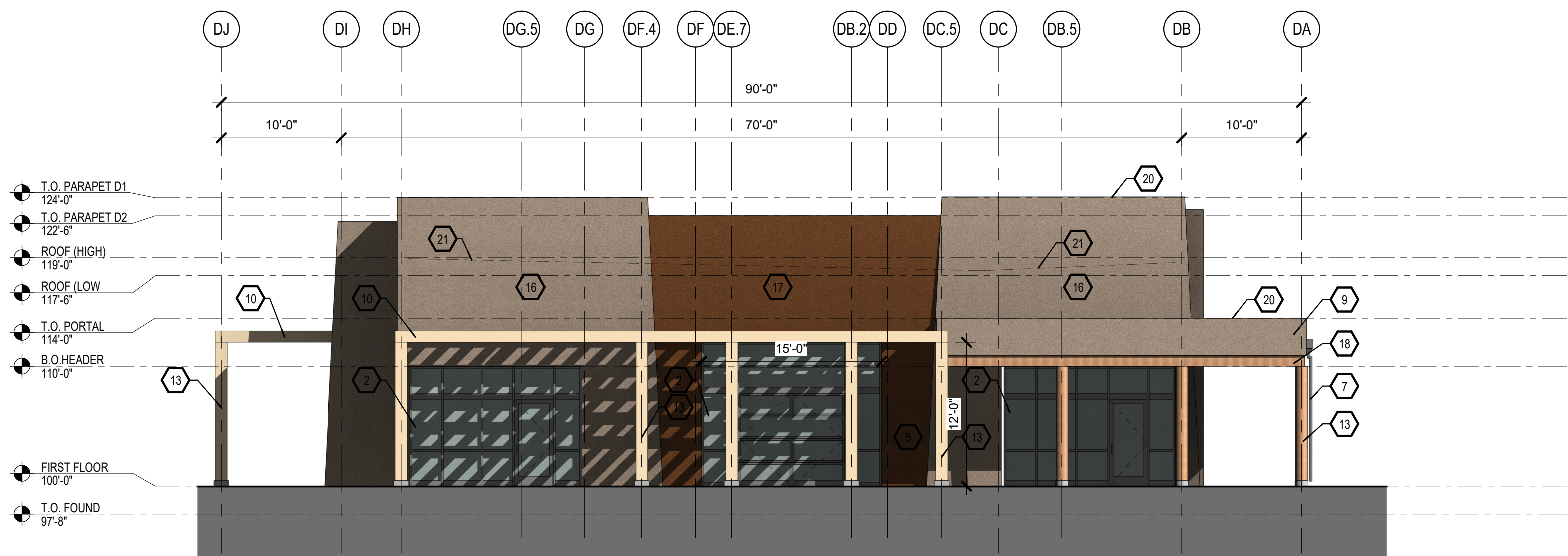


D

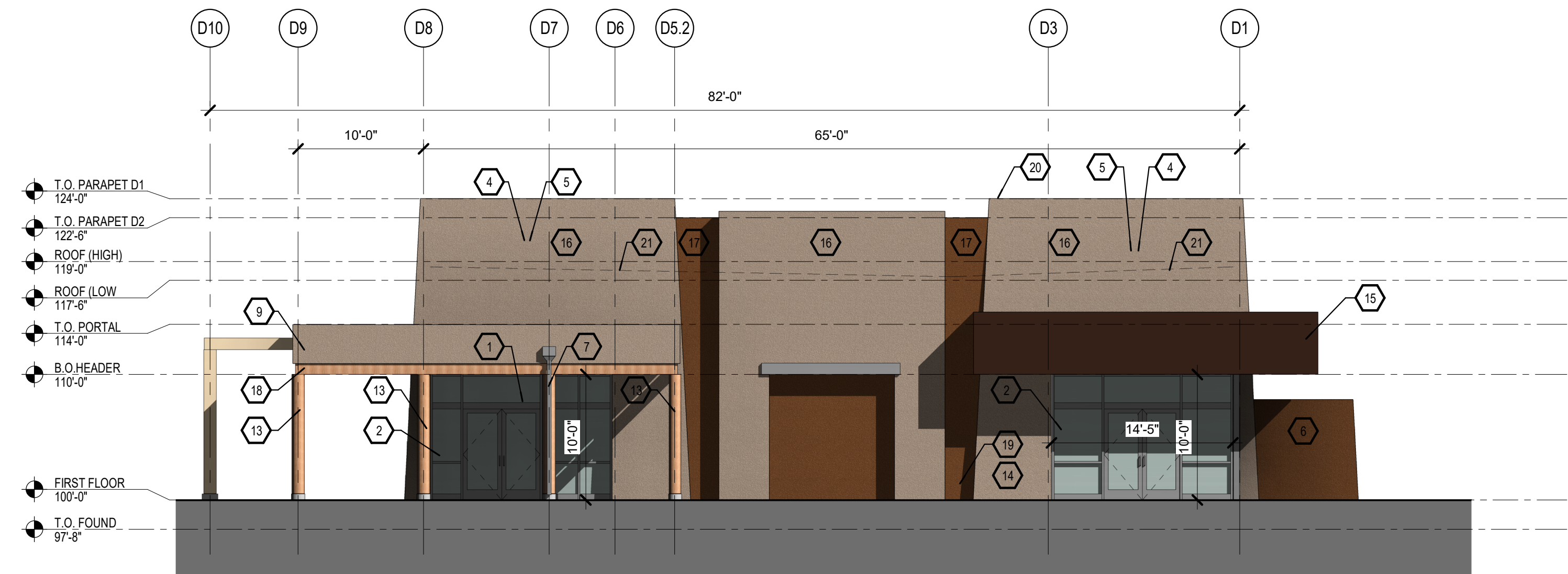
C

B

A



**B1 EAST BUILDING ELEVATION**  
1/8" = 1'-0"



**A1 NORTH**  
1/8" = 1'-0"

GENERAL NOTES

- A. COORDINATE WITH MECHANICAL, ELECTRICAL & PLUMBING.
- B. GRADE VARIES. REFER TO CIVIL FOR EXTERIOR FINISH GRADES.
- C. FINAL DOOR LOCATIONS T.B.A. COORDINATE WITH FUTURE TENANT.
- D. BUILDING MOUNTED SIGNS SHALL NOT EXCEED AN AREA OF 6 PERCENT OF THE FACADE. LOGO SIZE SHALL NOT EXCEED 5X5' AND 2 FEET IN HEIGHT. 6 PERCENT OF THE AREA INCLUDES THE SIGNAGE AND THE LOGO. SIGNAGE IS NOT A PART OF THIS SUBMITTAL.

KEYED NOTES

- 1. ADDRESS IDENTIFICATION CENTERED ABOVE DOORWAY. LETTERING SHALL BE MINIMUM OF 12 INCHES HIGH WITH A MINIMUM BRUCH STROKE WIDTH OF 2 INCHES.
- 2. STOREFRONT GLAZING SYSTEM.
- 3. BACK OF HOUSE EMPLOYEE ACCESS.
- 4. FUTURE SIGNAGE LOCATION. SEPARATE PERMIT REQUIRED.
- 5. PROVIDE ELECTRICAL AT WALL.
- 6. YARD WALL.
- 7. PAINTED DOWNSPOUT AND LEADER HEAD WITH OVERFLOW. SEE DETAIL.
- 8. METER LOCATION - EXPOSED LINES PAINTED TO MATCH EIFS COLOR CODE.
- 9. PORTAL.
- 10. TRELLIS SHADE STRUCTURE.
- 11. STEEL FENCE AT PATIO YARD PAINTED BLACK 42" TALL.
- 12. EXIT ACCESS GATE ONLY WITH PANIC HARDWARE.
- 13. WOOD COLUMN.
- 14. BRASS COW TONGUE AT WALL. FOR OVERFLOW DRAIN.
- 15. ALUMINUM EYEBROW AT WINDOW.
- 16. TWO COAT SYNTHETIC STUCCO W/CRACKMASTER OVER 1" RIGI INSUALTIONA ADHERED TO 1/2" SHEATHING OVER 2X WOOD FURRING OVER WALL FRAMING ( SEE WALL TYPES FOR ADDL. INFO.)
- 17. EXTERIOR WALL VARIES IN THICKNESS AND FORM REFER TO WALL SECTIONS FOR ADDL. INFORMATION.
- 18. WOOD BEAM.
- 19. ROOF DRAIN AND OVERFLOW AT PORTAL - INSTALL SPLASH BLOCK BELOW.
- 20. PAINTED METAL COPING.
- 21. ROOF SLOPE.

LEGEND

EXTERIOR INSULATING AND FINISH SYSTEM  
EL REY STUCCO COLOR - RAWHIDE T022L (34)

EXTERIOR INSULATING AND FINISH SYSTEM  
EL REY STUCCO COLOR - BUCKSKIN T020L (45)

CONCRETE

STONE VENEER

METAL PANEL.  
REFER TO ELEVATIONS FOR PANEL DIMENSIONS

MATERIALS AND COLORS

COLORS SHOWN ARE IPFDC AND SSWA APPROVED.  
FINISHES AND COLORS ON ELEVATIONS ARE FOR REFERENCE ONLY.

STUDIO SW  
ARCHITECTS

2101 Mountain Road NW Suite B | Albuquerque NM 87104  
505-843-9639 | www.studioswarch.com

© 2019 Studio Southwest Architects, Inc. Duplication or reproduction by any means without the express written consent of Studio Southwest Architects, Inc. is a violation of federal and international law. The information contained in this document is the intellectual property of Studio Southwest Architects, Inc. and all rights thereto are reserved.

CONSULTANTS

Architect Engineer

DRB SUBMITTAL

AVANYU NORTH -  
BUILDINGS D, E & F



2500 12th Street  
ALBUQUERQUE, NM

Key Plan

NTS

No	Date	Description
Revision Schedule		
ISSUE:	DESIGN DEVELOPMENT	
PROJECT NUMBER:	1836	
FILE:	1836 Avanyu Bldg D R19	
DRAWN BY:	Author	
CHECKED BY:	Checker	
DATE:	12/01/2018	

SHEET TITLE

EXTERIOR BUILDING  
ELEVATIONS

A-201D