

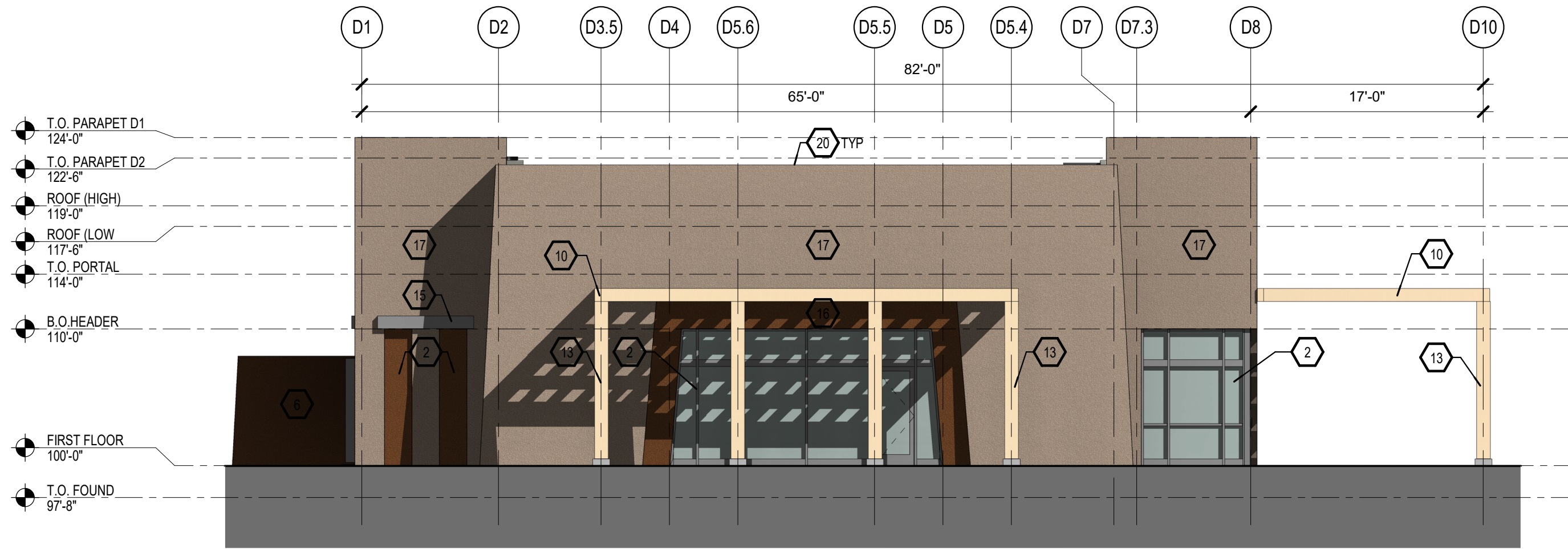
D

C

B

A

**B1** SOUTH  
1/8" = 1'-0"



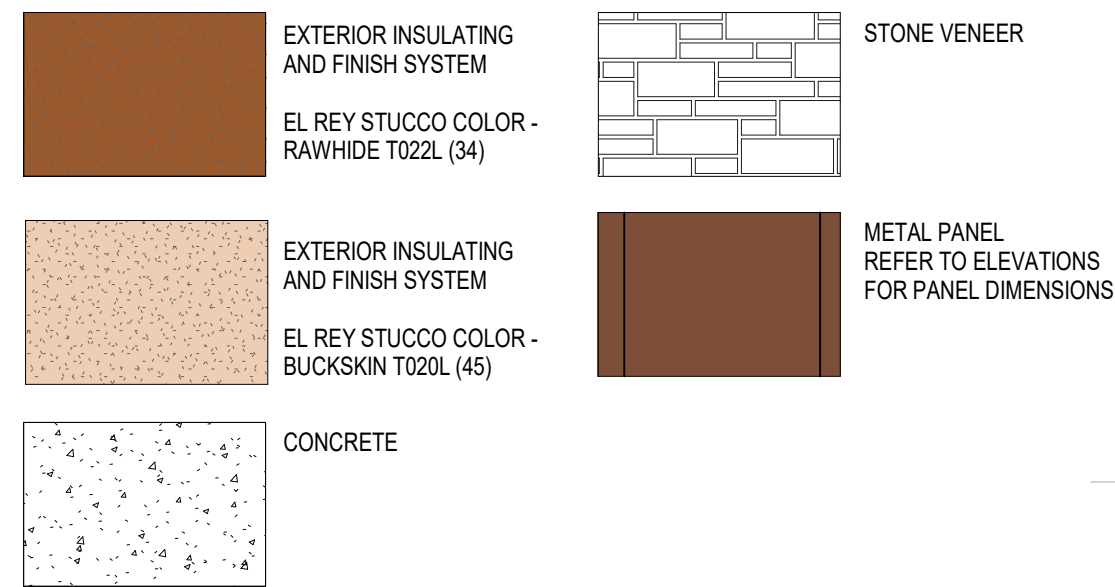
**GENERAL NOTES**

- COORDINATE WITH MECHANICAL, ELECTRICAL & PLUMBING.
- GRADE VARIES. REFER TO CIVIL FOR EXTERIOR FINISH GRADES.
- FINAL DOOR LOCATIONS T.B.A. COORDINATE WITH FUTURE TENANT.
- BUILDING MOUNTED SIGNS SHALL NOT EXCEED AN AREA OF 6 PERCENT OF THE FACADE. LOGO SIZE SHALL NOT EXCEED 5X5' AND 2 FEET IN HEIGHT. 6 PERCENT OF THE AREA INCLUDES THE SIGNAGE AND THE LOGO. SIGNAGE IS NOT A PART OF THIS SUBMITTAL.

**KEYED NOTES**

- ADDRESS IDENTIFICATION CENTERED ABOVE DOORWAY. LETTERING SHALL BE MINIMUM OF 12 INCHES HIGH WITH A MINIMUM BRUCH STROKE WIDTH OF 2 INCHES.
- STOREFRONT GLAZING SYSTEM.
- BACK OF HOUSE EMPLOYEE ACCESS.
- FUTURE SIGNAGE LOCATION. SEPARATE PERMIT REQUIRED.
- PROVIDE ELECTRICAL AT WALL.
- YARD WALL.
- PAINTED DOWNSPOUT AND LEADER HEAD WITH OVERFLOW. SEE DETAIL.
- METER LOCATION - EXPOSED LINES PAINTED TO MATCH EIFS COLOR CODE.
- PORTAL.
- TRELLIS SHADE STRUCTURE.
- STEEL FENCE AT PATIO YARD PAINTED BLACK 42" TALL.
- EXIT ACCESS GATE ONLY WITH PANIC HARDWARE.
- WOOD COLUMN.
- BRASS COW TONGUE AT WALL. FOR OVERFLOW DRAIN.
- ALUMINUM EYEBROW AT WINDOW.
- TWO COAT SYNTHETIC STUCCO W/CRACKMASTER OVER 1" RIGI ISUALTIONA ADHERED TO 1/2" SHEATHING OVER 2X WOOD FURRING OVER WALL FRAMING ( SEE WALL TYPES FOR ADDL. INFO.)
- EXTERIOR WALL VARIES IN THICKNESS AND FORM REFER TO WALL SECTIONS FOR ADDL. INFORMATION.
- WOOD BEAM.
- ROOF DRAIN AND OVERFLOW AT PORTAL - INSTALL SPLASH BLOCK BELOW.
- PAINTED METAL COPING.
- ROOF SLOPE.

**LEGEND**



**MATERIALS AND COLORS**

COLORS SHOWN ARE IPFDC AND SSWA APPROVED.  
FINISHES AND COLORS ON ELEVATIONS ARE FOR REFERENCE ONLY.

**REQUIRED GLAZING**

TOTAL FACADE AREA FACING PLAZA: 1,020 SF  
40% MIN. OF AREA REQUIRED TO BE GLAZED: 408 SF  
TOTAL PROPOSED AREA OF GLAZING  
FACING PLAZA: 410 SF (40%)

© 2019 Studio Southwest Architects, Inc. Duplication or reproduction by any means without the express written consent of Studio Southwest Architects, Inc. is a violation of federal and international law. The information contained in this document is the intellectual property of Studio Southwest Architects, Inc. and all rights thereto are reserved.

**CONSULTANTS**

Architect Engineer

**DRB SUBMITTAL**

**AVANYU NORTH -  
BUILDINGS D, E & F**



2500 12th Street  
ALBUQUERQUE, NM

**Key Plan**

NTS

No	Date	Description
Revision Schedule		
ISSUE:	DESIGN DEVELOPMENT	
PROJECT NUMBER:	1836	
FILE:	1836 Avanyu Bldg D R19	
DRAWN BY:	Author	
CHECKED BY:	Checker	
DATE:	12/01/2018	

**SHEET TITLE**

**EXTERIOR BUILDING  
ELEVATIONS**

**A-202D**