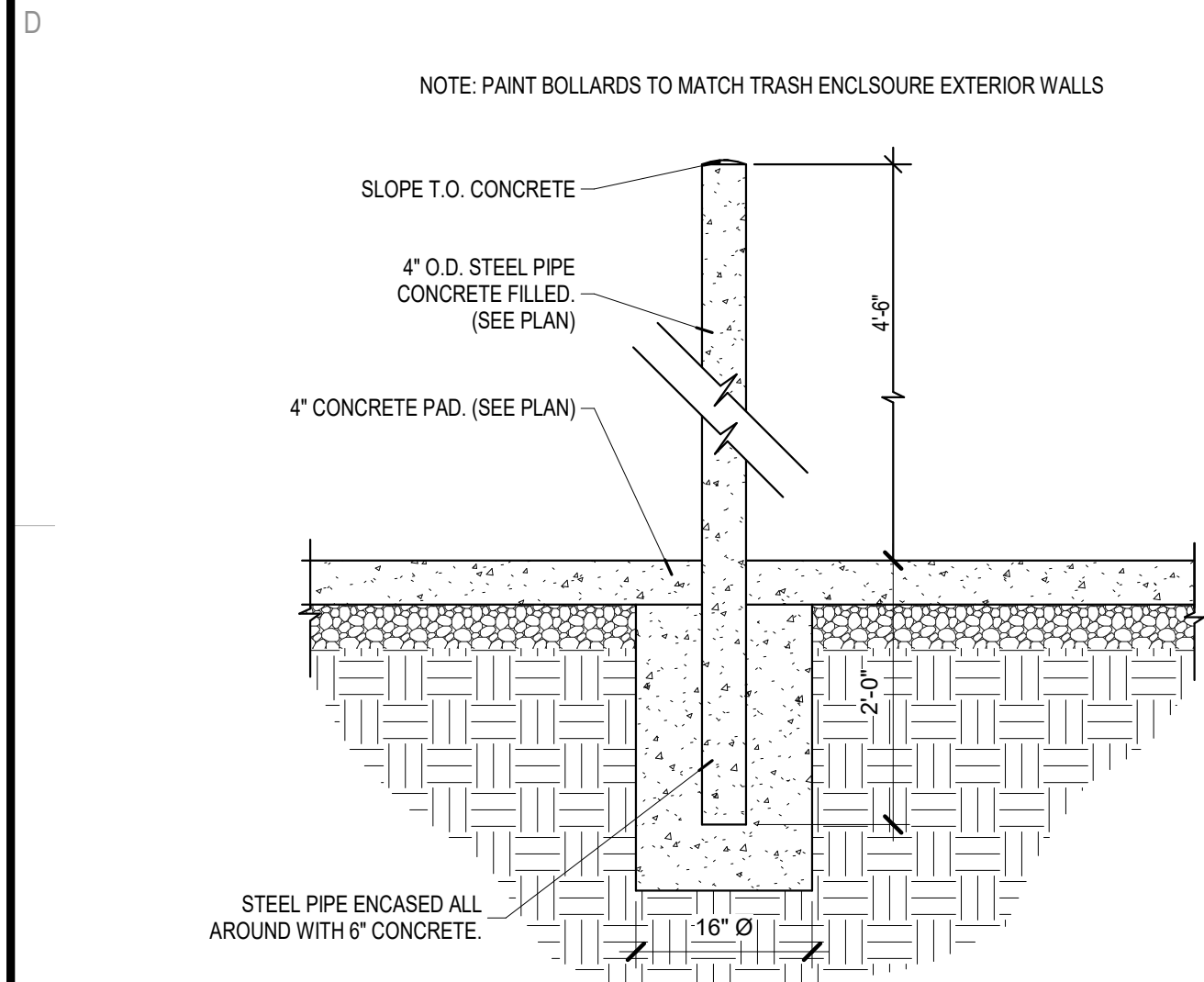


D

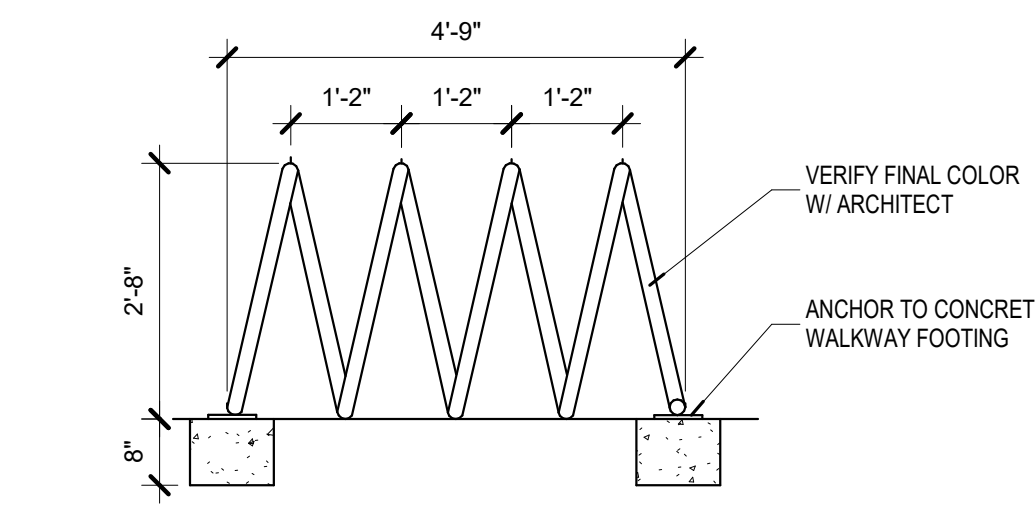
C

B

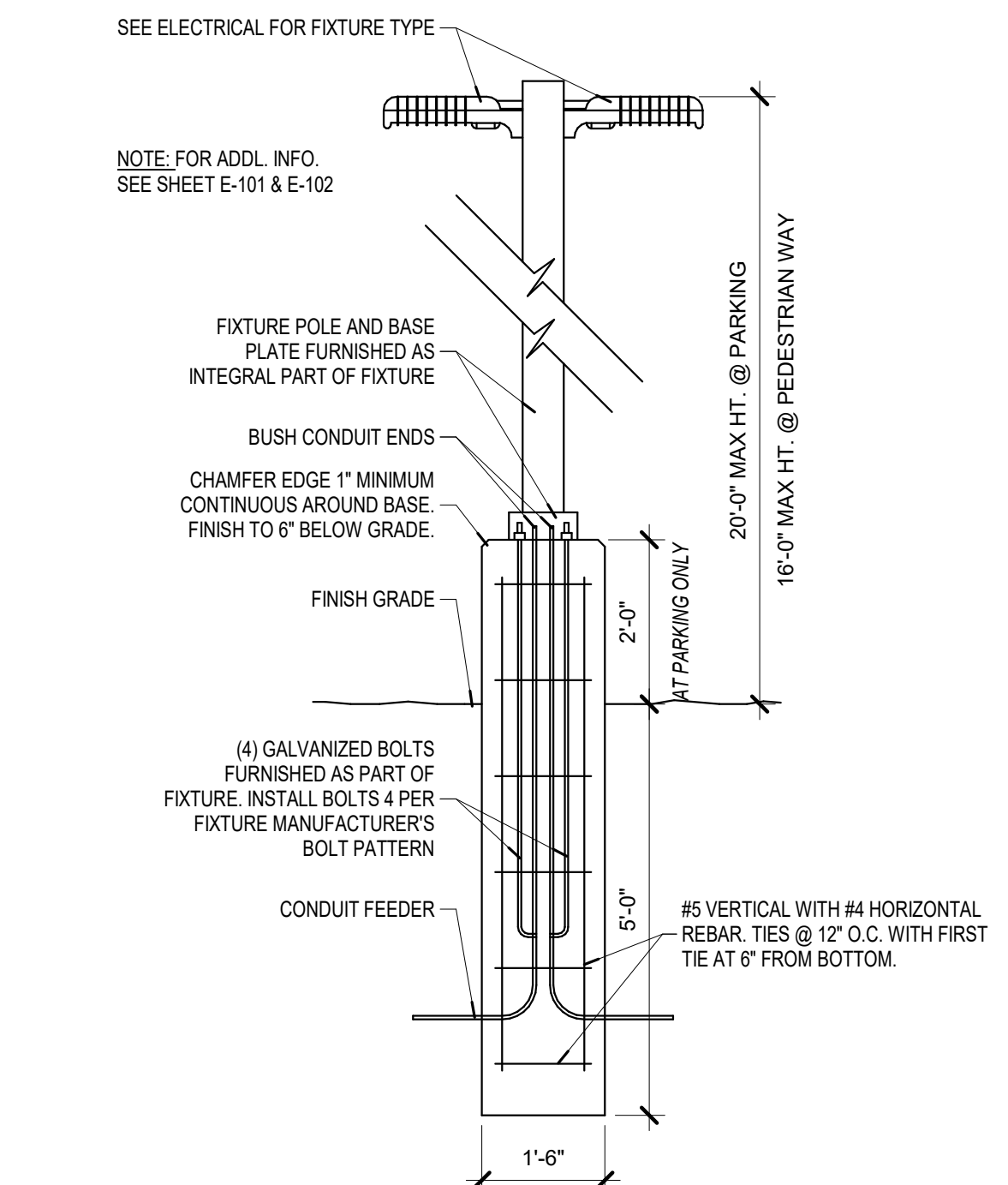
A



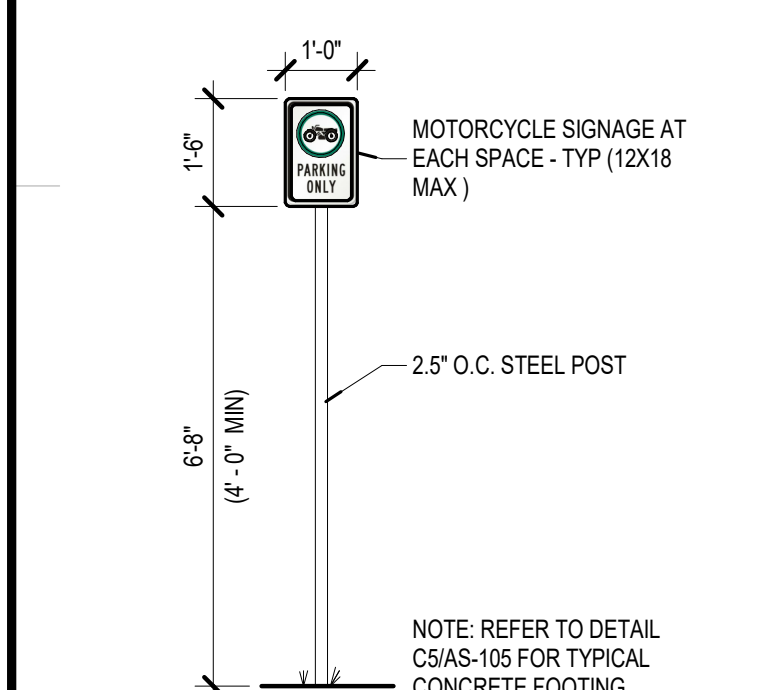
**C1 BOLLARD**  
3/4" = 1'-0"



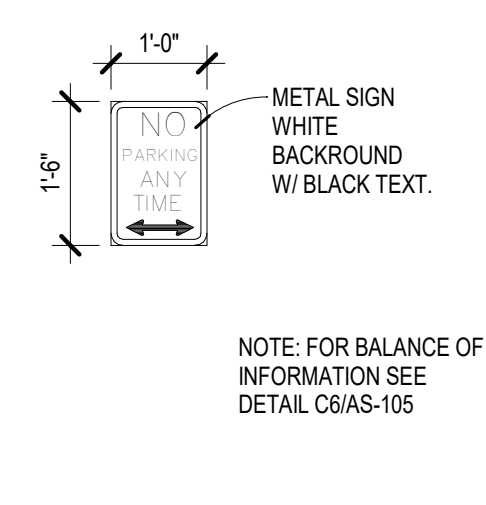
**C2 COIL BIKE RACK**  
1/2" = 1'-0"



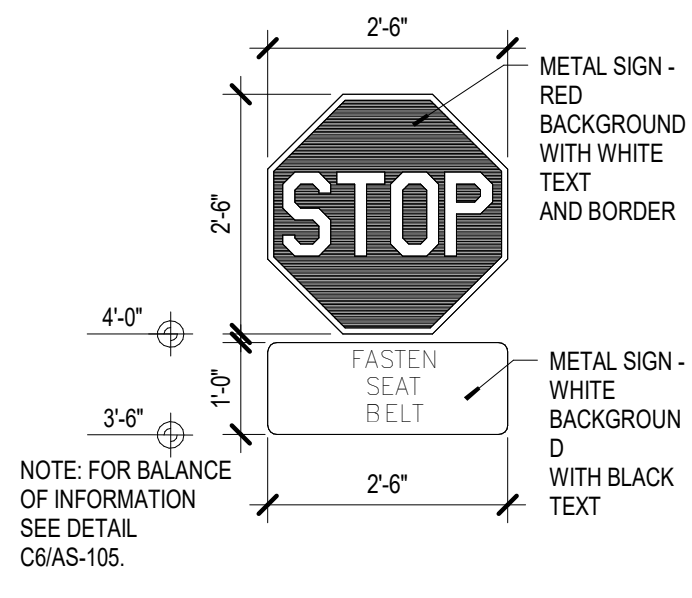
**C3 LIGHTING**  
1/2" = 1'-0"



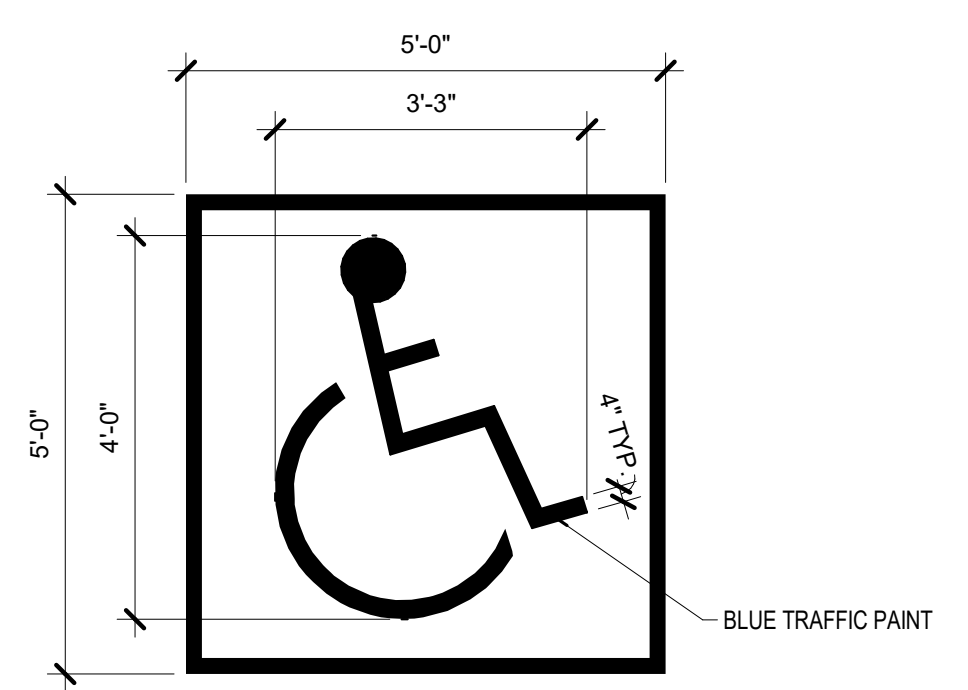
**B1 MOTO SIGN**  
3/8" = 1'-0"



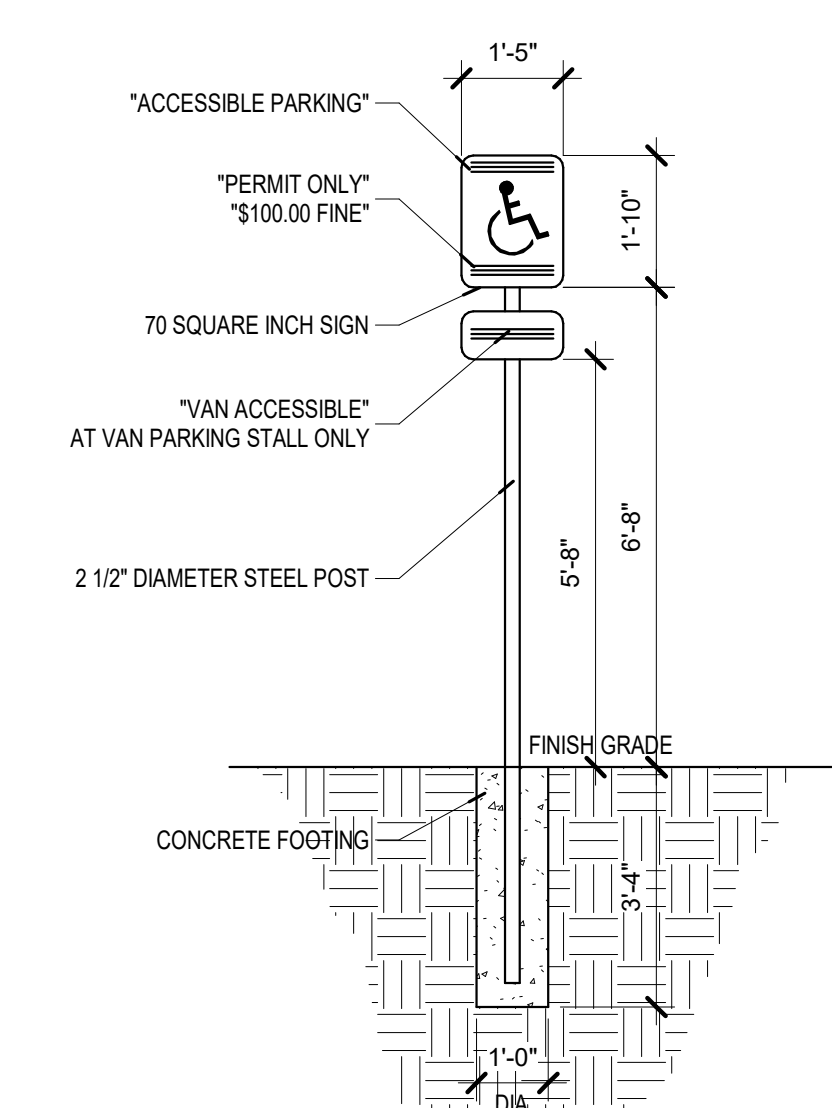
**B2 NO PARKING SIGN 1**  
1/2" = 1'-0"



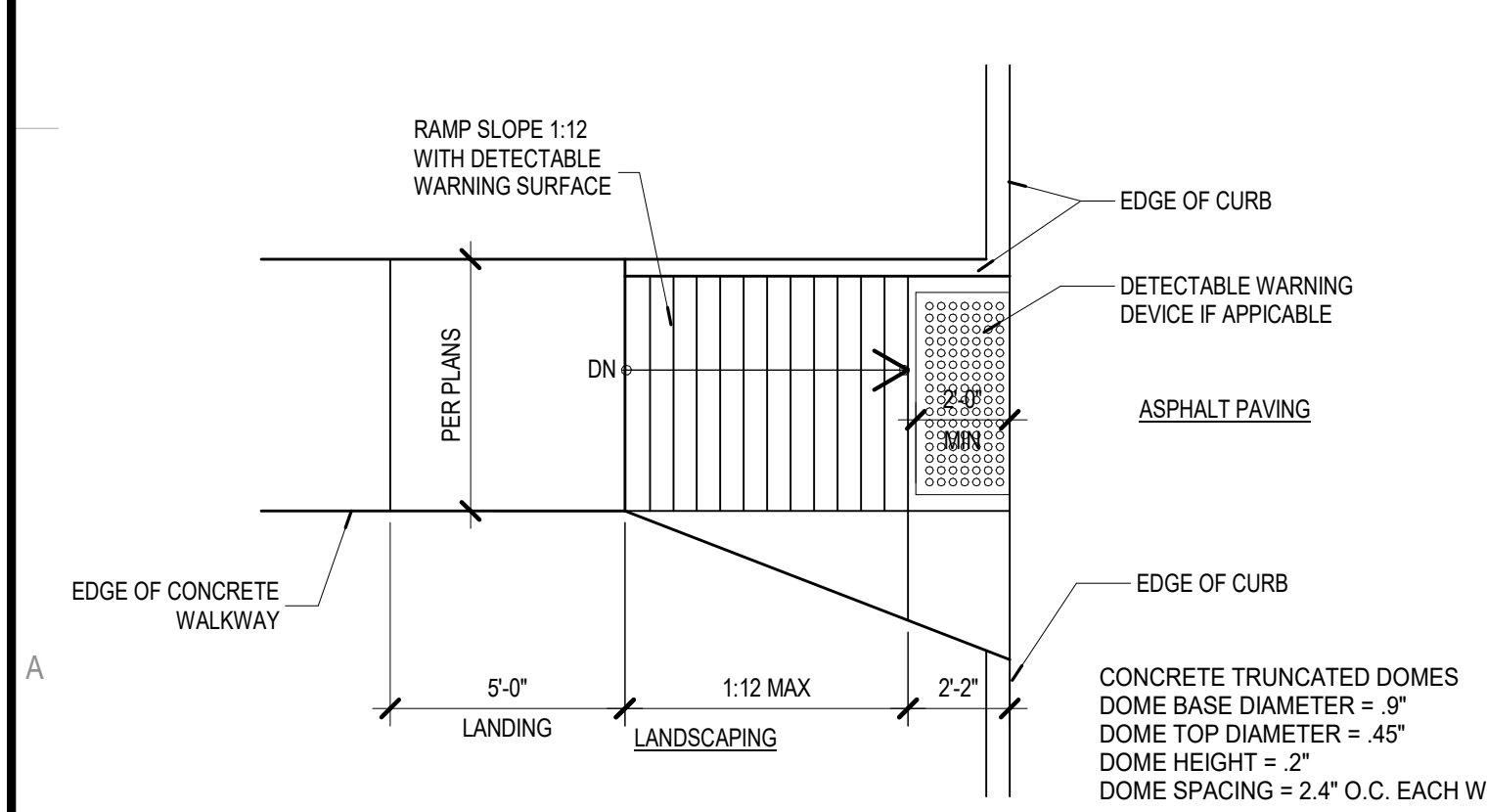
**B3 STOP SIGN 1**  
1/2" = 1'-0"



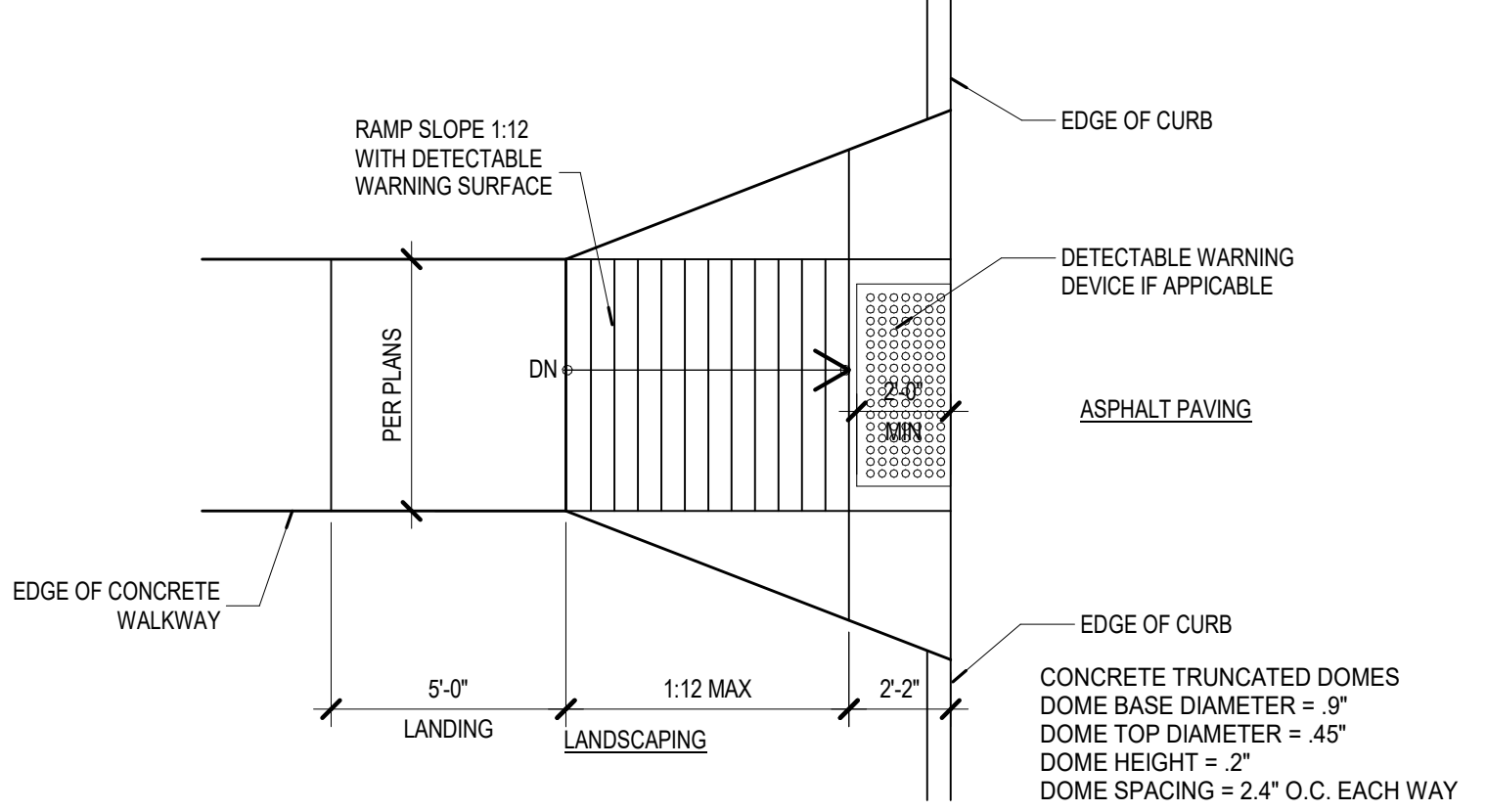
**B4 ADA SIGNAGE AT STALL**  
1/2" = 1'-0"



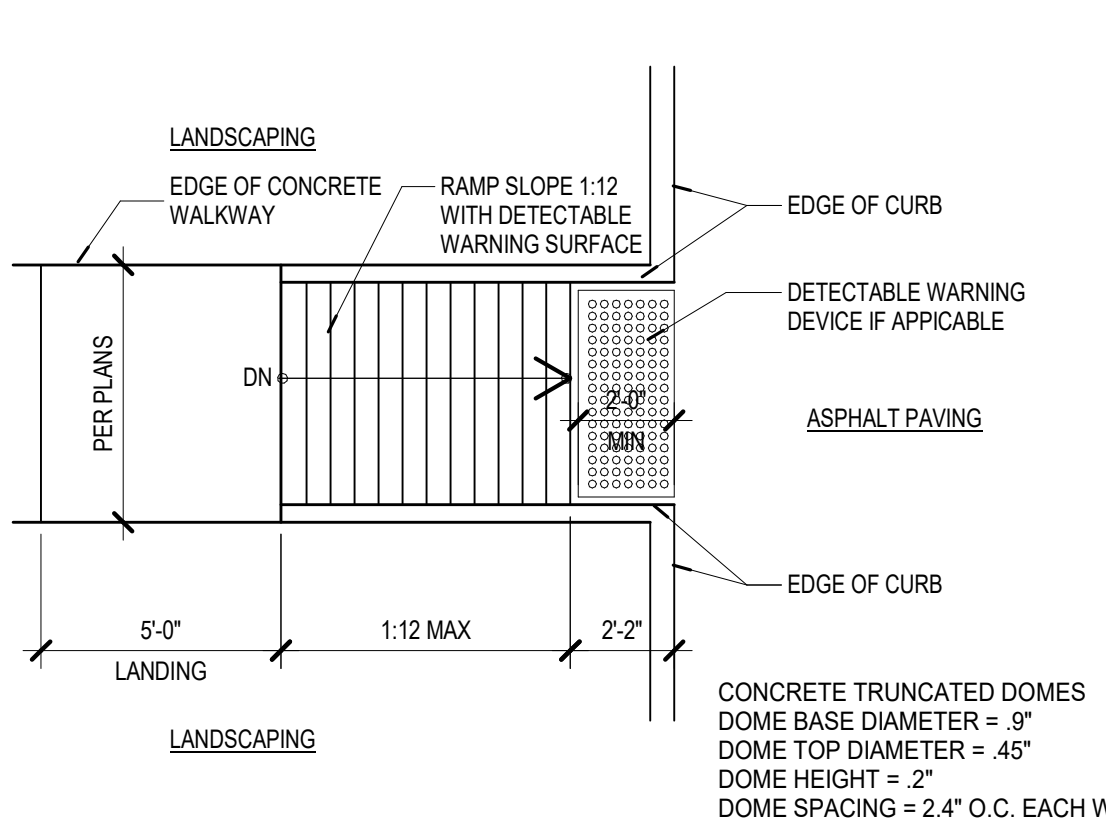
**B5 ADA PARKING SIGNAGE**  
3/8" = 1'-0"



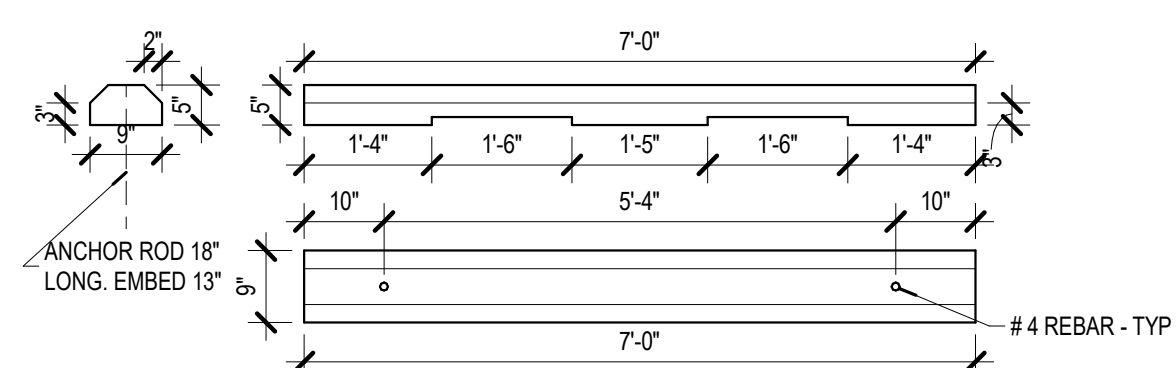
**A1 CURB RAMP - 1**  
1/4" = 1'-0"



**A2 CURB RAMP - 2**  
1/4" = 1'-0"



**A3 CURB RAMP - 3**  
1/4" = 1'-0"



**A4 CONCRETE WHEEL STOP**  
1/2" = 1'-0"

2101 Mountain Road NW Suite B | Albuquerque NM 87104  
505-843-9639 | www.studioswarch.com

© 2019 Studio Southwest Architects, Inc. Duplication or reproduction by any means without the express written consent of Studio Southwest Architects, Inc. is a violation of federal and international law. The information contained in this document is the intellectual property of Studio Southwest Architects, Inc. and all rights thereto are reserved.

CONSULTANTS

Architect Engineer

**DRB SUBMITTAL**

AVANYU NORTH - BUILDINGS D, E & F

2500 12th Street  
ALBUQUERQUE, NM

Key Plan  
NTS

No	Date	Description
Revision Schedule		
ISSUE:	DESIGN DEVELOPMENT	
PROJECT NUMBER:	1836	
FILE:	1836 Avanyu Bldg D R19	
DRAWN BY:	Author	
CHECKED BY:	Checker	
DATE:	12/01/2018	

SHEET TITLE  
**SITE DETAILS**

**AS-105**