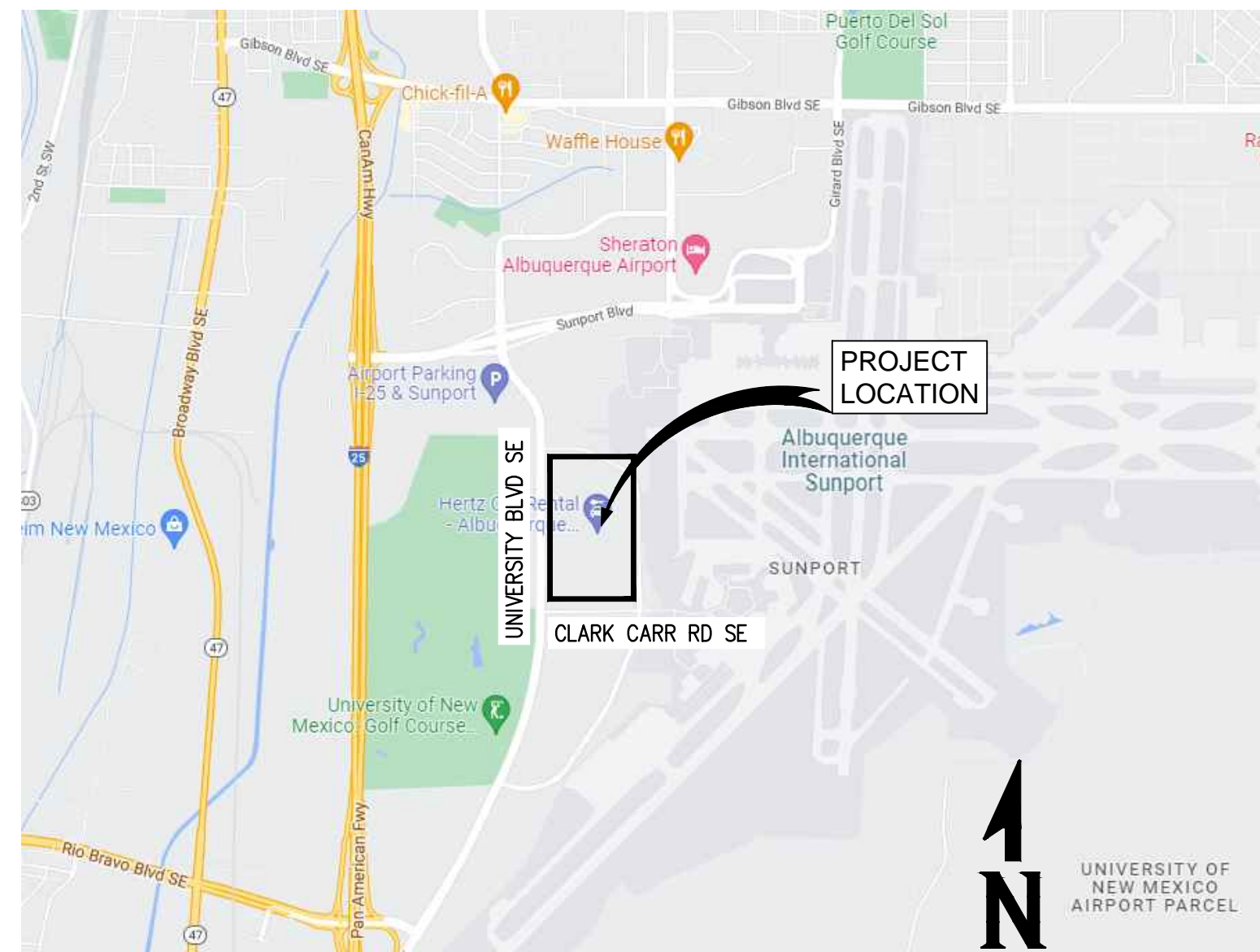
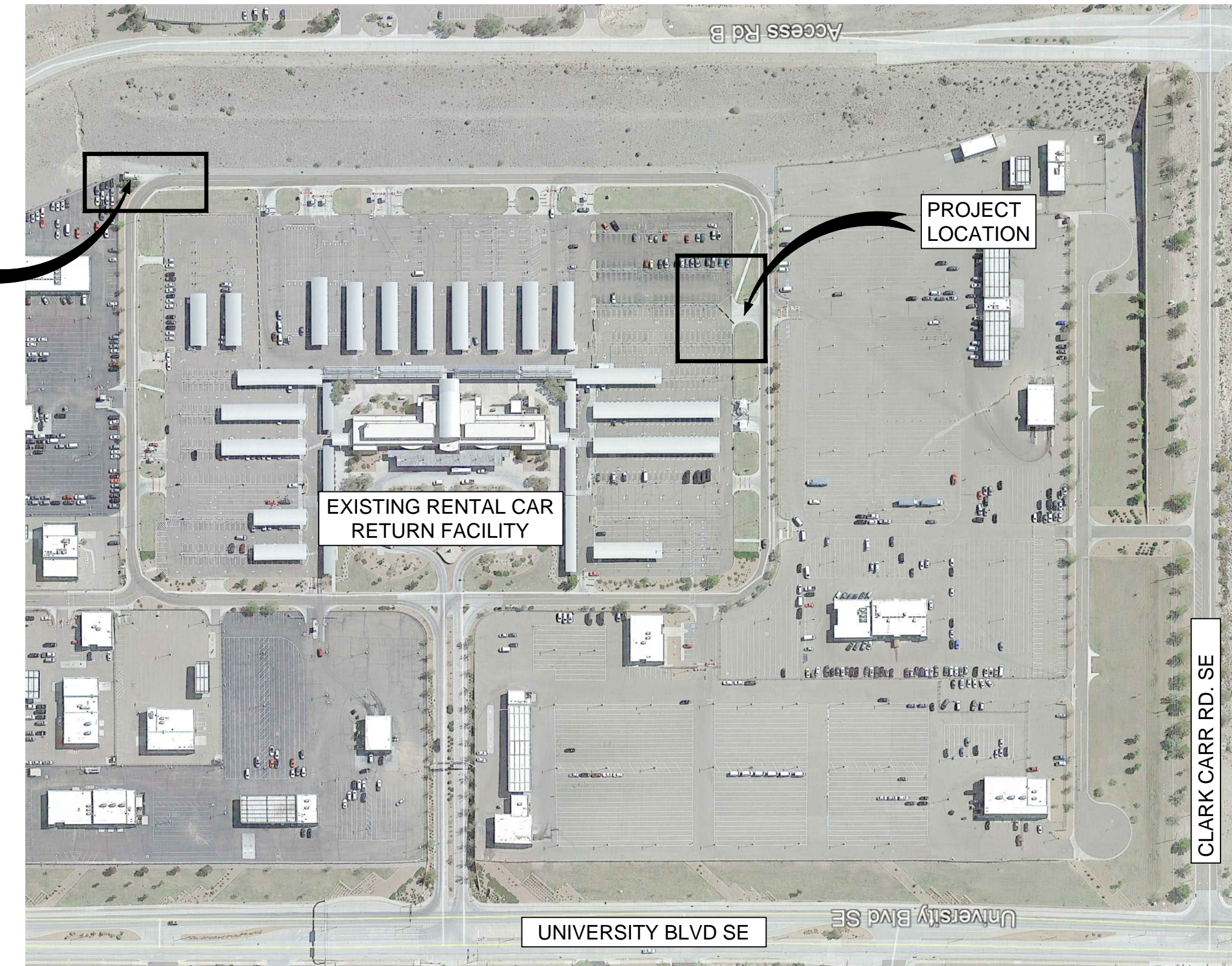


[DATE: 5/25/2022 9:59 AM] [AUTHOR: jpeylin] [PLOTTER: HP55] [STYLE: -----] [LAYOUT: C-120 OVERALL SITE PLAN - READY & RETURN LOT]

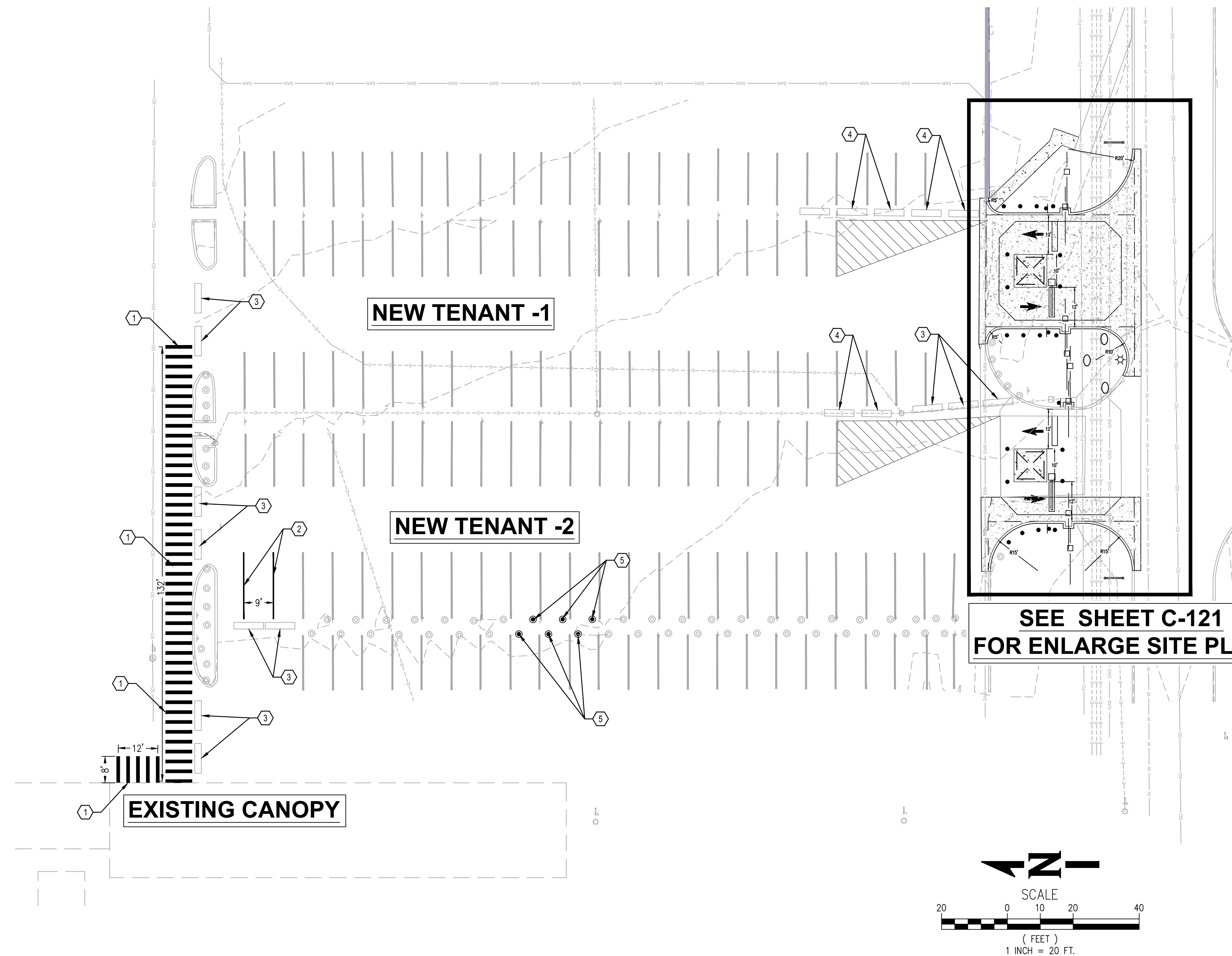
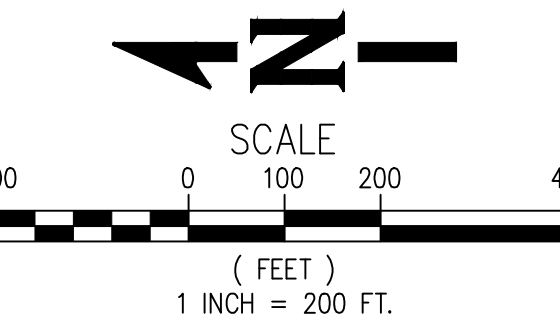


LOCATION MAP
Scale: N.T.S



EXISTING DUMPSTER

EXISTING RENTAL CAR RETURN FACILITY



GENERAL NOTES:

1. ALL SITE CONSTRUCTION SHOULD CONFORM TO CITY OF ALBUQUERQUE PUBLIC WORKS STANDARD SPECIFICATION AND DETAILS UNLESS OTHERWISE NOTED.
2. DIMENSION SHOWN ON THIS PLAN REFERENCE TO FACE OF CURB, EDGE OF BUILDING, EDGE OF SIDEWALKS UNLESS OTHERWISE NOTED.
3. ALL EXISTING UTILITIES SHOWN ON THIS PLAN ARE APPROXIMATE, CONTRACTOR TO FIELD VERIFY EXISTING LOCATION PRIOR TO EXCAVATION.
4. CONTRACTOR TO CALL IN FOR UTILITY LINE LOCATES PRIOR TO ANY EXCAVATION.

KEYNOTES:

1. INSTALL 8' LONG X 12" WIDE WHITE STRIPING CROSS WALK SPACED 24" MAXIMUM FROM EXISTING SIDEWALK & ADA ACCESS RAMP UNDER CANOPY AREA FOR PEDESTRIAN ACCESS.
2. INSTALL 20' LONG X 4" WIDE WHITE STRIPING FOR PARKING SPACES.
3. RELOCATE EXISTING CONCRETE BARRIERS AS NECESSARY FOR NEW ENTRANCE CONSTRUCTION AND SPACE IT MINIMUM 4'-0" APART FOR PEDESTRIAN ACCESS.
4. EXISTING CONCRETE BARRIERS TO REMAIN.
5. INSTALL 3' STATIONARY STEEL BOLLARD PER COA STANDARD DETAIL DWG 2250. SPACED AT 9' MAXIMUM.

PARKING SPACE SUMMARY (PROJECT AREA):

EXISTING RENTAL CAR PARKING = 95 SPACES
(REMOVED SPACES = 6, ADDED SPACES = 3)
NEW RENTAL CAR PARKING = 92 SPACES
LOSS PERCENTAGE(WITHIN PROJECT AREA) = 3.16%

AS BUILT INFORMATION	
Contractor	Date
Work Staked By	Date
Asperations By	Date
Field Annotations By	Date
Unapproved By	Date
Connected By	Date
Recorded By	Date
No.	

SURVEY INFORMATION	
Field Notes	Date
No.	By



No.	Date	By	Remarks
			REVISIONS DESIGN



CITY OF ALBUQUERQUE PUBLIC WORKS DEPARTMENT ENGINEERING DEVELOPMENT GROUP			
TITLE: ALBUQUERQUE INTERNATIONAL AIRPORT RENTAL CAR FACILITY (RAC) - READY & RETURN LOT OVERALL SITE PLAN			
Design Review Committee	City Engineer Approval	Ms./Day/Yr.	Ms./Day/Yr.
City Project No. 6564.00-T6	Zone Map No. M-16	Drawing No. C-120	Sheet Of