

**MONUMENTS**

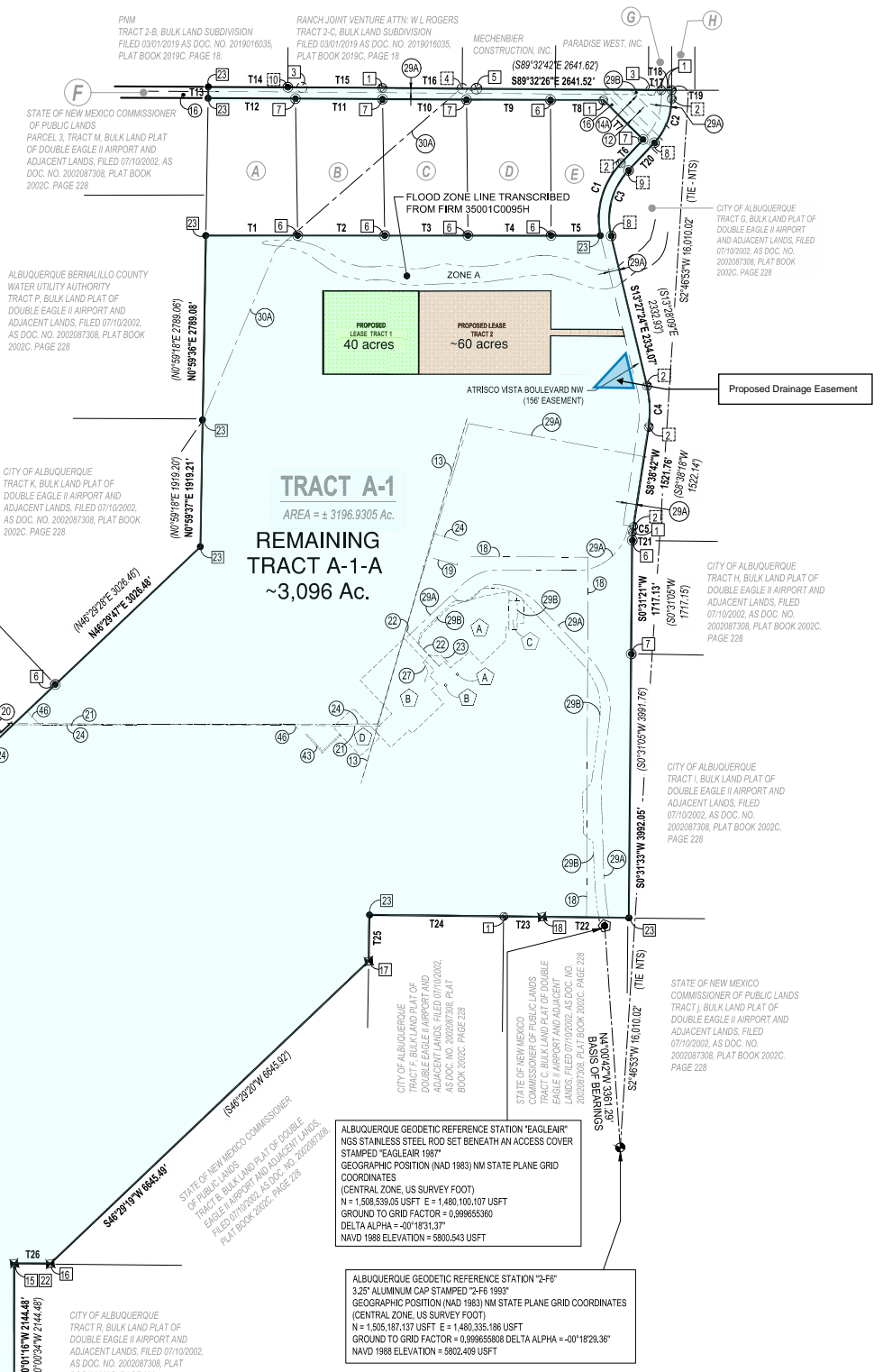
- CALCULATED POINT
- FOUND 5/8" REBAR
- FOUND 5/8" REBAR - ON LINE
- FOUND 1.5" IRON PIPE
- FOUND 2.5" IRON PIPE - ON LINE
- FOUND NAIL IN STONE
- FOUND 1.25" PLASTIC CAP STAMPED "LS 7924" ON 5/8" REBAR
- FOUND 1.25" PLASTIC CAP (ILLEGIBLE) ON 5/8" REBAR
- FOUND 1.25" PLASTIC CAP STAMPED "MPLS 7924" ON 5/8" REBAR - ON LINE
- FOUND 1.25" PLASTIC CAP (ILLEGIBLE) ON 5/8" REBAR - ON LINE
- FOUND 3.25" BRASS CAP STAMPED "DE2 J LS 3517" ON 5/8" REBAR
- FOUND 3.25" BRASS CAP STAMPED "DE2 J LS 3517" ON 5/8" REBAR
- FOUND 3.25" BRASS CAP STAMPED "DE2 J LS 3517" ON 5/8" REBAR
- FOUND 3.25" BRASS CAP STAMPED "DE2 M 3G5 LS 3517" ON 5/8" REBAR
- FOUND 3.25" BRASS CAP STAMPED "DE2 M 3G5 LS 3517" ON 5/8" REBAR
- FOUND 3.25" BRASS CAP STAMPED "DE2 O LS 3517" ON 5/8" REBAR
- FOUND 3.25" BRASS CAP STAMPED "TAG 7-15 M WHITEMAN ENGR. CO."
- FOUND 1.0" PLASTIC CAP STAMPED "13489" - ON LINE
- FOUND 3.25" BRASS CAP - ILLEGIBLE - BENT - REJECTED
- FOUND 1.25" PLASTIC CAP STAMPED "LS 243" ON 5/8" REBAR - REJECTED
- SET 5/8" REBAR WITH PLASTIC CAP STAMPED "BENHAM 15500" OR NAIL WITH WASHER STAMPED "BENHAM 15500"

**KEYED ADJOINERS**

- (A) STATE OF NEW MEXICO COMMISSIONER OF PUBLIC LANDS TRACT L-1, PARCEL 1, PLAT OF TRACT A-1 & TRACT L-1 PARCELS 1-5, DOUBLE EAGLE II AIRPORT, FILED 11/13/2006, AS DOC. NO. 2006171918, PLAT BOOK 2006C, PAGE 351
- (B) STATE OF NEW MEXICO COMMISSIONER OF PUBLIC LANDS TRACT L-1, PARCEL 2, PLAT OF TRACT A-1 & TRACT L-1 PARCELS 1-5, DOUBLE EAGLE II AIRPORT, FILED 11/13/2006, AS DOC. NO. 2006171918, PLAT BOOK 2006C, PAGE 351
- (C) STATE OF NEW MEXICO COMMISSIONER OF PUBLIC LANDS TRACT L-1, PARCEL 3, PLAT OF TRACT A-1 & TRACT L-1 PARCELS 1-5, DOUBLE EAGLE II AIRPORT, FILED 11/13/2006, AS DOC. NO. 2006171918, PLAT BOOK 2006C, PAGE 351
- (D) STATE OF NEW MEXICO COMMISSIONER OF PUBLIC LANDS TRACT L-1, PARCEL 4, PLAT OF TRACT A-1 & TRACT L-1 PARCELS 1-5, DOUBLE EAGLE II AIRPORT, FILED 11/13/2006, AS DOC. NO. 2006171918, PLAT BOOK 2006C, PAGE 351
- (E) STATE OF NEW MEXICO COMMISSIONER OF PUBLIC LANDS TRACT L-1, PARCEL 5, PLAT OF TRACT A-1 & TRACT L-1 PARCELS 1-5, DOUBLE EAGLE II AIRPORT, FILED 11/13/2006, AS DOC. NO. 2006171918, PLAT BOOK 2006C, PAGE 351
- (F) CITY OF ALBUQUERQUE TRACT N-1, BULK LAND PLAT OF TRACTS N-1, O-1 & N-2 PARCELS 1, 2, 3 & 4, DOUBLE EAGLE II AIRPORT AND ADJACENT LANDS, FILED 11/20/2002, AS DOC. NO. 2002087308, PLAT BOOK 2002C, PAGE 228
- (G) HASSAN J. KHIMJI, TRUSTEE, HASSAN J. KHIMJI AND ZARINA H. KHIMJI REVOCABLE TRUST
- (H) DANIEL H. DOUGHTY AND ELIZABETH CHRISTINE DOUGHTY CO TRUSTEES, DANIEL AND ELIZABETH DOUGHTY TRUST

- (A) UNFILED PLAT ENTITLED "PLAT OF SURVEY AT DOUBLE EAGLE II AIRPORT FIXED BASE OPERATORS (FBO) LEASE TRACT #1 THRU 5"
- (B) UNFILED PLAT ENTITLED "PLAT OF SURVEY AT DOUBLE EAGLE II AIRPORT WEST MESA AVIATION (FBO) LEASE TRACT"
- (C) ADDITIONAL LEASE AREA AS DESCRIBED IN BK. A78, PG. 6123, DOC. NO. 2004076326.
- (D) LEASE SURVEY HIGH FLYING HANGERS - PHASE A DOUBLE EAGLE II AIRPORT FILED 07/20/2023, DOC. NO. 2023045597

**(SKETCH PLAT)**  
**BULK LAND PLAT OF**  
**TRACT A-1**  
**DOUBLE EAGLE II AIRPORT**  
CITY OF ALBUQUERQUE  
BERNALILLO COUNTY, NEW MEXICO



**KEYED EASEMENTS**

- (17) 100' ELEC. GRANT OF R.O.W. DOC. # 12825 FILED 03/19/61 AS SHOWN ON PLAT FILED 11/13/2006 AS DOC. NO. 2006171918, PLAT BOOK 2006C, PAGE 351.
- (18) APPROXIMATE LOCATION CENTERLINE 10' WIDE GRANT OF RIGHT OF WAY FILED 04/19/1965 AS DOC. NO. 49355, BK. D73, PG. 734 AS SHOWN ON PLAT FILED 11/13/2006 AS DOC. NO. 2006171918, PLAT BOOK 2006C, PAGE 351.
- (19) APPROXIMATE LOCATION CENTERLINE 10' WIDE GRANT OF RIGHT OF WAY FILED 04/19/1965 AS DOC. NO. 49355, BK. D73, PG. 734 AS SHOWN ON PLAT FILED 11/13/2006 AS DOC. NO. 2006171918, PLAT BOOK 2006C, PAGE 351.
- (20) APPROXIMATE LOCATION CENTERLINE 10' OVERHEAD EASEMENT GRANTED BY DOCUMENT FILED 03/03/1988 AS DOC. NO. 198801925, MISC. BK. 594, PG. 745, AS SHOWN ON PLAT FILED 11/13/2006 AS DOC. NO. 2006171918, PLAT BOOK 2006C, PAGE 351.
- (21) APPROXIMATE LOCATION CENTERLINE 10' OVERHEAD EASEMENT GRANTED BY DOCUMENT FILED 03/03/1988 AS DOC. NO. 198801925, MISC. BK. 594, PG. 745, AS SHOWN ON PLAT FILED 11/13/2006 AS DOC. NO. 2006171918, PLAT BOOK 2006C, PAGE 351.
- (22) APPROXIMATE LOCATION CENTERLINE 5' OVERHEAD EASEMENT - DOC. # 198801925, MISC. BK. 594, PG. 745, AS SHOWN ON PLAT FILED 11/13/2006 AS DOC. NO. 2006171918, PLAT BOOK 2006C, PAGE 351.
- (23) APPROXIMATE LOCATION CENTERLINE 10' ELEC. & TELE. U.G. EASEMENT - DOC. # 866485, MISC. BK. 648A, PG. 657 FILED 07/28/1988 AS SHOWN ON PLAT FILED 11/13/2006 AS DOC. NO. 2006171918, PLAT BOOK 2006C, PAGE 351.
- (24) APPROXIMATE LOCATION CENTERLINE 10' WIDE RIGHT OF WAY EASEMENT FILED 10/11/1988 AS DOC. NO. 198801925, MISC. BK. 672A, PG. 791 AS SHOWN ON PLAT FILED 11/13/2006 AS DOC. NO. 2006171918, PLAT BOOK 2006C, PAGE 351.
- (25) APPROXIMATE LOCATION CENTERLINE 5' ELEC. & TELE. EASEMENT - DOC. # 811147, BK. 9122, PG. 4487-4488 FILED 12/20/1991 AS SHOWN ON PLAT FILED 11/13/2006 AS DOC. NO. 2006171918, PLAT BOOK 2006C, PAGE 351.
- (26) APPROXIMATE LOCATION CENTERLINE 10' WIDE EASEMENT FILED 03/01/1994 AS DOC. NO. 199402670, BK. 647, PG. 4105 AS SHOWN ON PLAT FILED 11/13/2006 AS DOC. NO. 2006171918, PLAT BOOK 2006C, PAGE 351.
- (26A) 60' WIDE PUBLIC ACCESS EASEMENT GRANTED BY PLAT FILED 07/10/2002 AS DOCUMENT NO. 2002087308, PLAT BOOK 2002C, PAGE 228
- (26B) 70' WIDE PUBLIC ACCESS & P.U.E. GRANTED BY PLAT FILED 07/10/2002 AS DOCUMENT NO. 2002087308, PLAT BOOK 2002C, PAGE 228
- (26C) PASEO DEL VOLCAN N.W. 156' WIDE PUBLIC ACCESS EASEMENT GRANTED BY PLAT FILED 07/10/2002 AS DOCUMENT NO. 2002087308, PLAT BOOK 2002C, PAGE 228
- (26D) APPROXIMATE LOCATION CENTERLINE 156' PUBLIC ACCESS EASEMENT (P.A.E.) GRANTED BY PLAT FILED 07/10/2002 AS DOC. NO. 2002087308, PLAT BOOK 2002C, PAGE 228.
- (26E) APPROXIMATE LOCATION "CL EXISTING O.H. ELEC" AS SHOWN ON PLAT FILED 07/10/2002 AS DOC. NO. 2002087308, PLAT BOOK 2002C, PAGE 228.
- (26F) APPROXIMATE LOCATION 10' ELECTRICAL EASEMENT AS SHOWN ON PLAT FILED 11/13/2006 AS DOC. NO. 2006171918, PLAT BOOK 2006C, PAGE 351, PLAT REFERENCES BK. 494, PG. 8472 - DOCUMENT NOT PROVIDED.
- (26G) 70' PUBLIC ACCESS & P.U.E. GRANTED BY PLAT FILED 11/13/2006 AS DOC. NO. 2006171918, PLAT BOOK 2006C, PAGE 351.
- (26H) EXISTING 60' RIGHT OF WAY FILED 02/25/1988 (BK. C35, PG. 191) AS SHOWN ON PLAT FILED 11/13/2006 AS DOC. NO. 2006141918, PLAT BOOK 2006C, PAGE 351.
- (30A) APPROXIMATE LOCATION CENTERLINE 50' WIDE GAS LINE EASEMENT GRANTED BY DOC. # 2002077320, BOOK A37, PAGE 7101, FILED 08/18/2002 AS SHOWN ON PLAT FILED 07/10/2002 AS DOCUMENT NO. 2002087308, PLAT BOOK 2002C, PAGE 228
- (41) APPROXIMATE LOCATION 400' PERMANENT PUBLIC ROADWAY EASEMENT (PASEO DEL VOLCAN ROADWAY), FILED 11/13/2017, DOC. NO. 2017106548.
- (43) APPROXIMATE LOCATION PERMANENT EASEMENT AS SHOWN ON DOCUMENT FILED 11/20/2018, DOC. NO. 2018101053.
- (46) APPROXIMATE LOCATION CENTERLINE EASEMENT AGREEMENT, FOR WATER AND/OR SANITARY SEWER FACILITIES, FILED 05/18/2022, DOC. NO. 2022048962.

**TANGENT DATA**

ID	BEARING	DISTANCE
T1	S89°59'41"E	1390.73'
T2	S89°59'51"E	1316.97'
T3	S89°59'37"E	1258.80'
T4	S89°59'51"E	1260.10'
T5	S90°00'00"E	745.57'
T6	N43°11'00"E	490.67'
T7	N45°20'39"W	846.21'
T8	N89°41'50"W	800.69'
T9	N89°41'34"W	1271.27'
T10	N89°41'28"W	1271.08'
T11	N89°41'35"W	1317.15'
T12	N89°41'52"W	1320.73'
T13	N00°51'21"E	170.66'
T14	S89°40'23"E	1417.82'
T15	S89°33'00"E	1214.79'

**TANGENT DATA**

ID	BEARING	DISTANCE
T16	S89°34'45"E	1425.71'
T17	S89°34'03"E	154.92'
T18	S89°40'57"E	155.97'
T19	S00°14'36"E	128.06'
T20	S43°10'54"W	571.50'
T21	S00°31'04"W	118.99'
T22	N89°20'32"W	1311.10'
T23	N89°20'35"W	579.69'
T24	N89°22'11"W	2033.77'
T25	S00°56'56"W	700.56'
T26	N89°33'50"W	545.41'
T27	N89°57'25"W	498.14'
T28	N46°30'15"E	1399.74'

**CURVE DATA**

ID	ARC	RADIUS	TANGENT	DELTA	CHORD	CHORD BRG
C1	1182.35'	1239.00'	640.54'	54°40'34"	1137.99'	N15°50'37"E
C2	732.90'	967.00'	385.06'	43°25'30"	715.48'	S21°28'09"W
C3	1070.57'	1083.00'	583.60'	56°38'18"	1027.51'	S14°51'26"W
C4	623.75'	1617.00'	315.80'	22°06'06"	619.89'	S02°24'21"E
C5	94.41'	878.00'	47.25'	6°09'40"	94.37'	S11°43'32"W

