

D1
TREE PLANTING DETAIL
NTS

PLANT LEGEND GUARANTEE ALL PLANTINGS FOR ONE YEAR

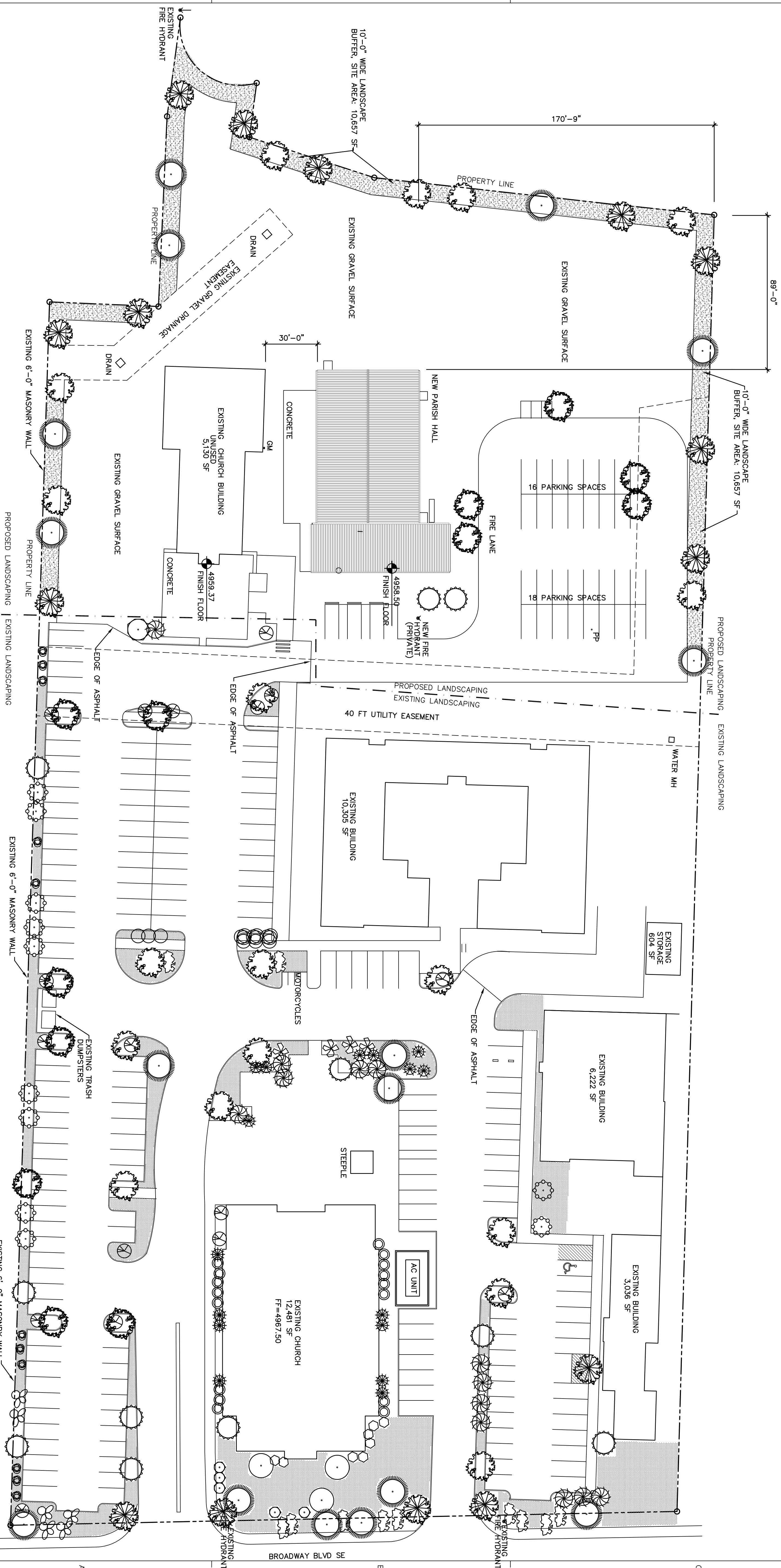
- | | | | |
|--|---|--|---|
| | AUTUMN PURPLE ASH (FRAXINUS AMERICANA) | | EASTERN REDBUD (CERROS CANADENSIS) |
| | CHITALPA (CHILOPSIS CATALPA) | | AUSTRIAN PINE (PINUS NIGRA) |
| | DESERT WILLOW (CHILOPSIS LINEARIS) | | NEW MEXICO OLIVE (FORESTERA NEOMEXICANA) |
| | AGAVE 16 SF | | PRICKLY PEAR 9 SF |
| | BIRD OF PARADISE (GESEALPINA GILLETII) 5 GALLON | | MOUNTAIN MAHOGANY (CERCOCARPUS MONTANUS) 5 GALLON |
| | SCOTTS BROOM (COTTUS SCOPARIUS) 16 SF | | ROSE SHRUB 25 SF |
| | TURPENTINE BUSH (ERICAMERICA LARICIFLORA) 16 SF | | AUTUMN SAGE (SALVIA GREGGII) 9 SF |
| | FERN BUSH 25 SF | | WHIRLING BUTTERFLIES QUARA UNDEHEMERU 16 SF |
| | CAT MINT (NEPETA MUSSINI) 45 SF | | |
- ALL NEW PLANTING SHALL BE IRRIGATED WITH A DRIP IRRIGATION SYSTEM PROVIDE A SHOP DRAWING LAYOUT OF THE SYSTEM, AND TYPES OF EMITTERS AND FLOW CAPACITY OF EMITTERS.

GROUND COVER

- | | |
|--|--|
| | LADY BANKS ROSE (ROSA BANKSIAE) 400 SF |
| | HONEYSUCKLE (LONICERA JAPONICA) 144 SF |
| | SANTA FE BROWN CRUSHER FINES W/FILTER FABRIC 3" DEEP |
| | SANTA FE BROWN GRAVEL W/FILTER FABRIC 3" DEEP |
| | COBBLE W/FILTER FABRIC 3" DEEP |

LANDSCAPE CALCULATIONS

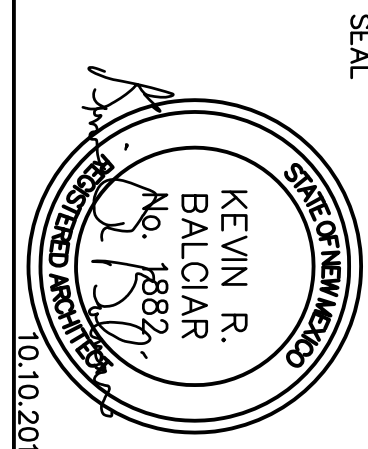
SITE AREA: 294,035 SF
LESS BUILDING AREA: (44,553 SF)
SUBTOTAL: 249,482 SF
LANDSCAPING: 38,726 SF / 249,482 SF = 15.5%



A1
EXISTING SITE LANDSCAPING PLAN
1"=30'

SOLE WEST

Architecture Planning Interior Design Engineering
PO BOX 23372
Albuquerque, NM 87192
Tel (505) 250-5050
architect@solewest.com www.solewest.com



PROFESSIONAL SEAL
CONSULTANT

PROJECT NAME
SAN JOSÉ CATHOLIC CHURCH
PARISH HALL
SAN JOSÉ CATHOLIC CHURCH
2401 BROADWAY BLVD SE
ALBUQUERQUE, NM 87102

MARK	DATE	DESCRIPTION
	10.10.2018	DRB REVISIONS

PROJECT NUMBER	1724
DRAWN BY	KRB
CHECKED BY	KRB
ISSUE DATE	10-10-18
FILE NAME:	1724_L101_SITE-PLANDWG
SHEET NAME	LANDSCAPE SITE PLAN EXISTING
SHEET NUMBER	L-101