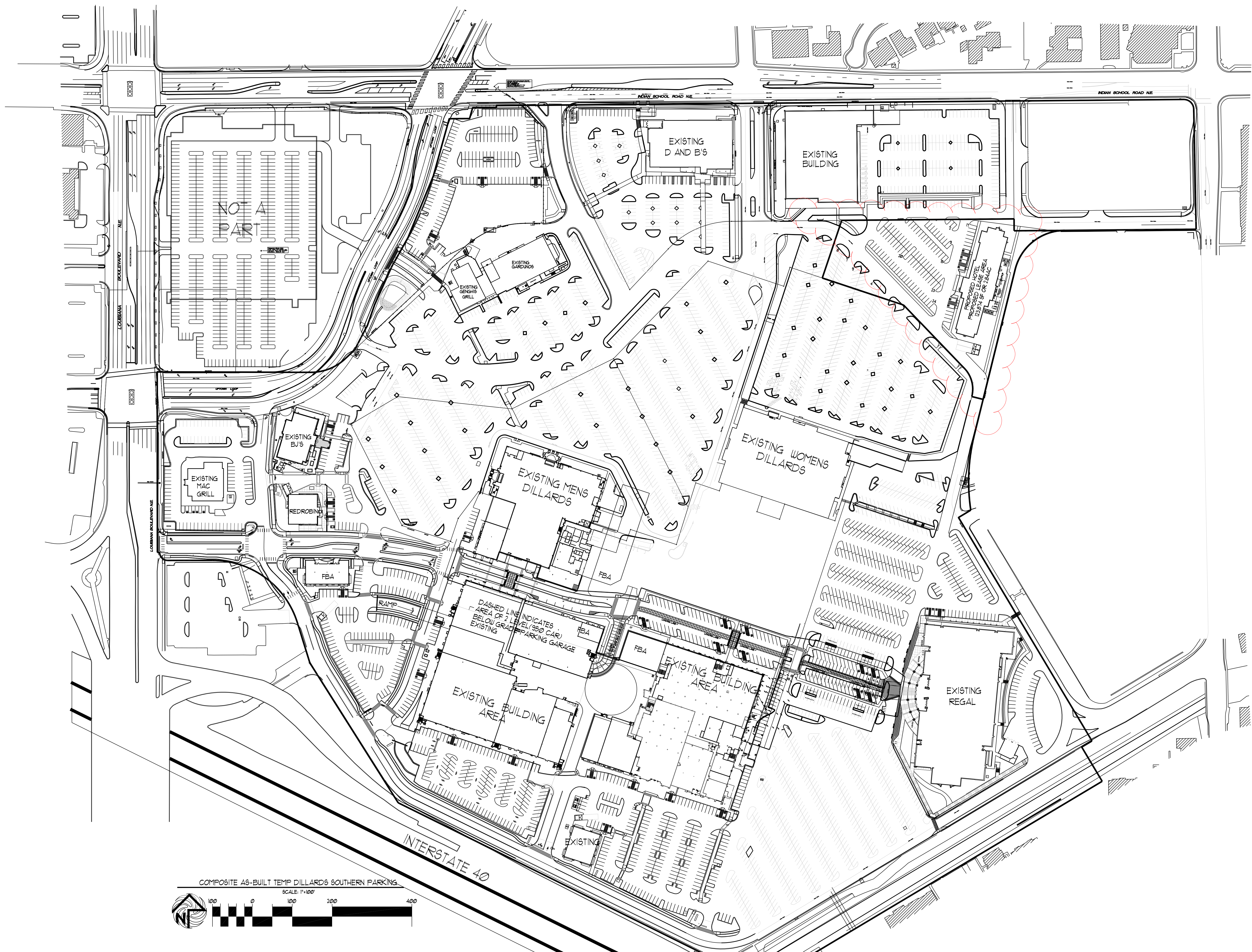


ADMINISTRATIVE AMENDMENT

FILE # _____ PROJECT # _____

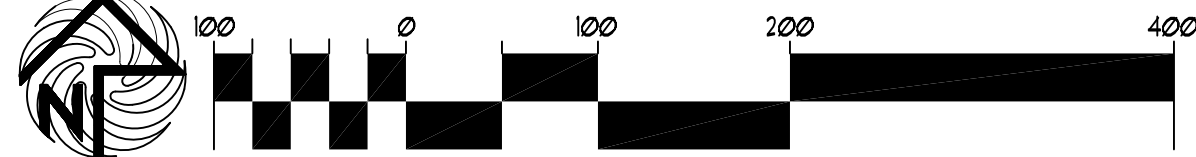
APPROVED BY

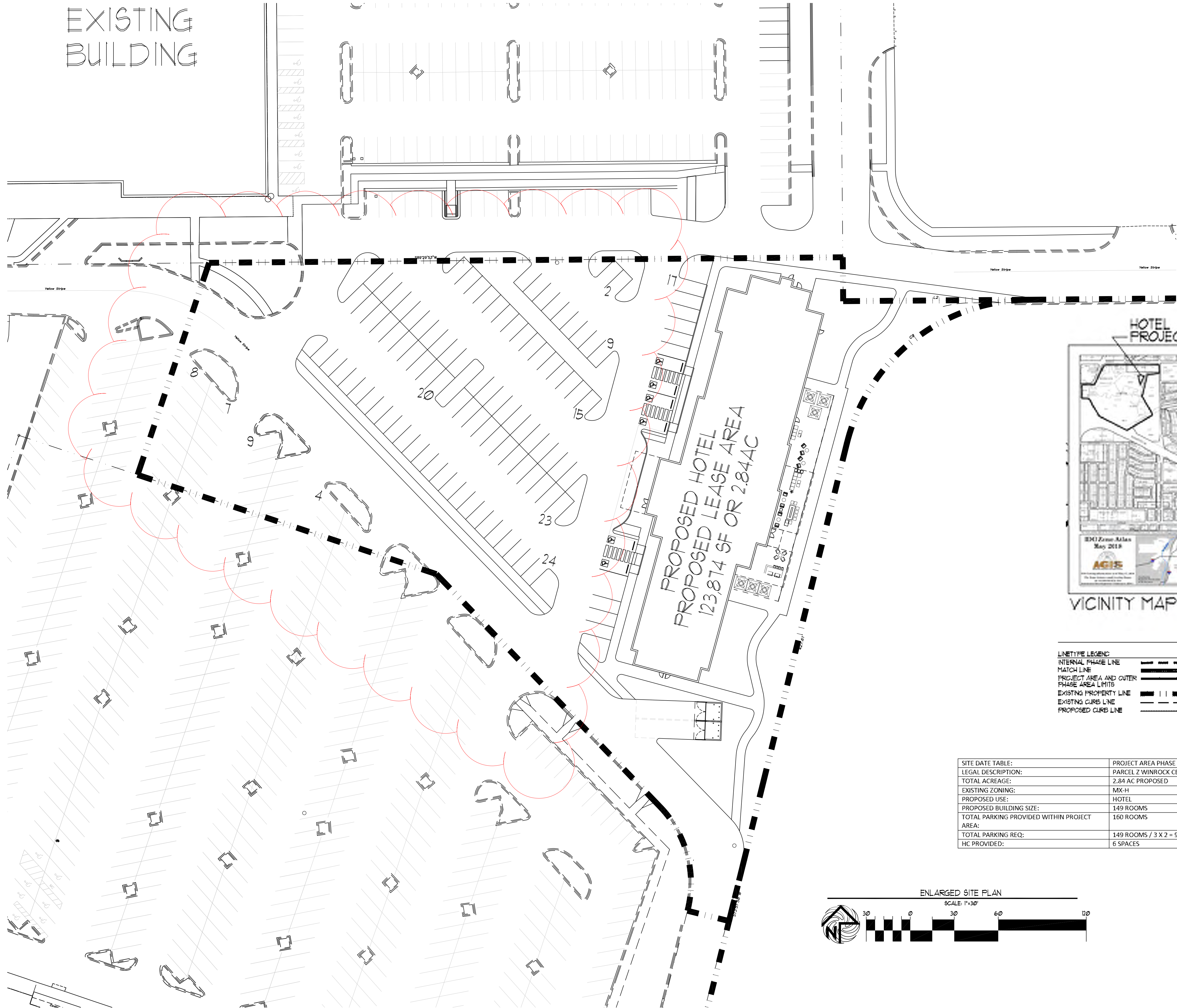
DATE



COMPOSITE A6-BUILT TEMP DILLARDS SOUTHERN PARKING

SCALE: 1"=100'

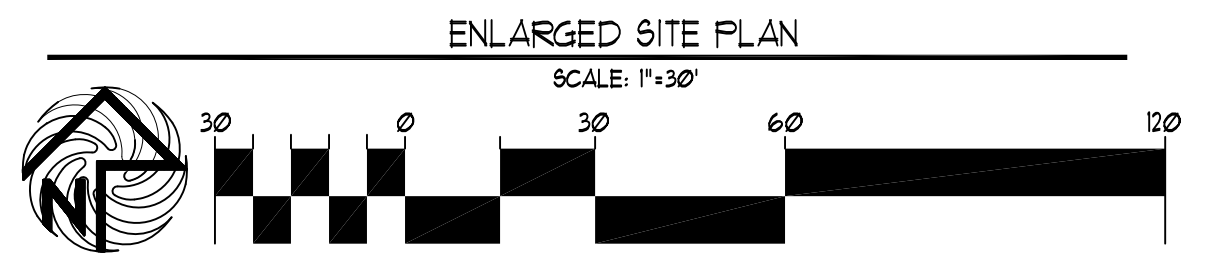




LINE TYPE LEGEND

INTERNAL PHASE LINE	— — — — —
MATCH LINE	— — — — —
PROJECT AREA AND OUTER PHASE AREA LIMITS	— — — — —
EXISTING PROPERTY LINE	— — — — —
EXISTING CURB LINE	— — — — —
PROPOSED CURB LINE	— — — — —

SITE DATE TABLE:	PROJECT AREA PHASE LIMITS (LO)
LEGAL DESCRIPTION:	PARCEL Z WINROCK CENTER ADDITION
TOTAL ACREAGE:	2.84 AC PROPOSED
EXISTING ZONING:	MX-H
PROPOSED USE:	HOTEL
PROPOSED BUILDING SIZE:	149 ROOMS
TOTAL PARKING PROVIDED WITHIN PROJECT AREA:	160 ROOMS
TOTAL PARKING REQ:	149 ROOMS / 3 X 2 = 99 REQUIRED PARKS
HC PROVIDED:	6 SPACES



REV	DATE	BY	REVISION
1			
2			
3			
4			
5			
6			

MODULUS ARCHITECTS
 100 SUN AVE. N.W. SUITE 305
 ALBUQUERQUE, NEW MEXICO 87102
 PHONE (505) 338-1499 FAX (505) 338-1498

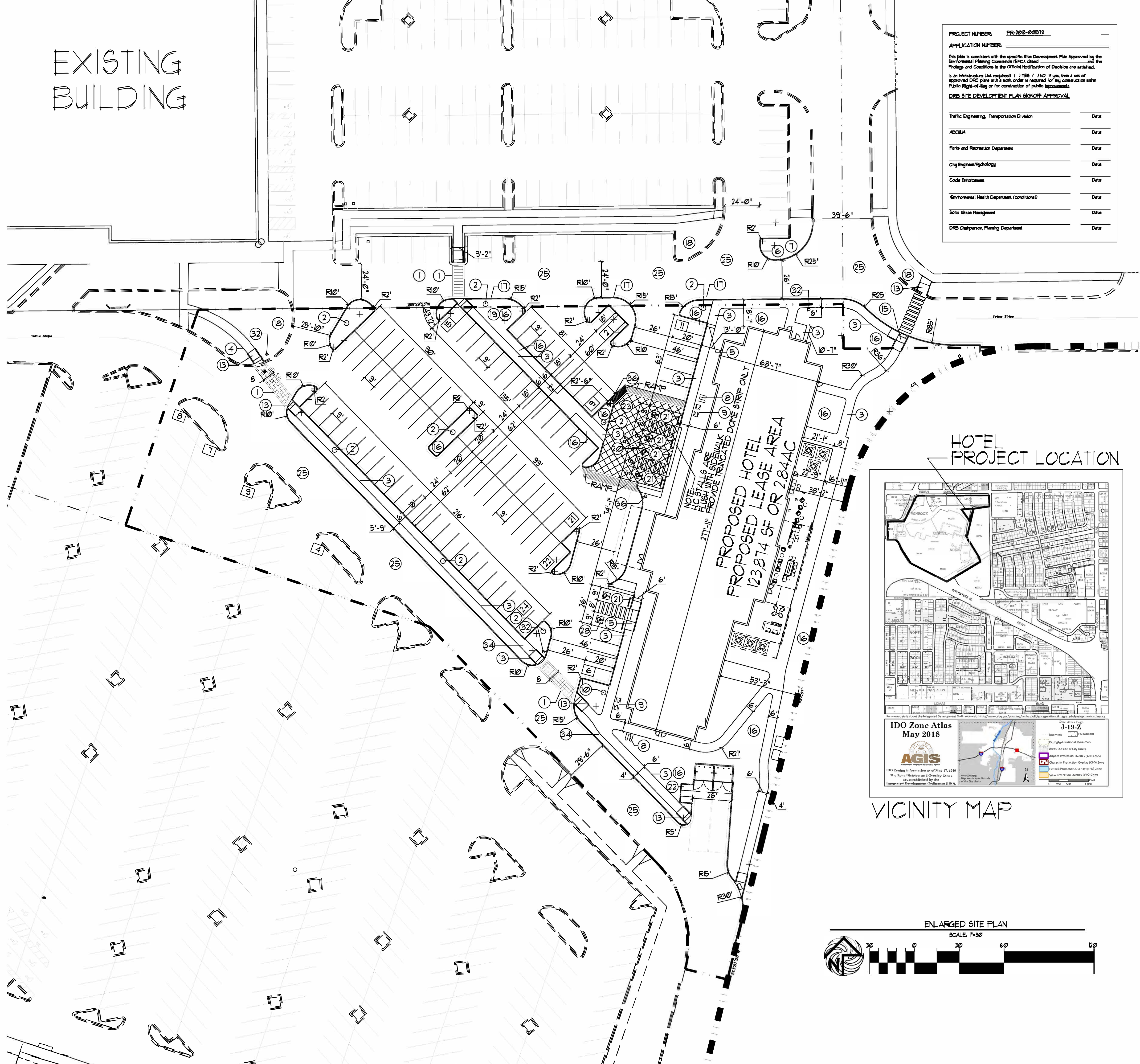
PROJECT TITLE: WINROCK TOWN CENTER
 2100 LOUISIANA BLVD NE
 ALBUQUERQUE, NEW MEXICO

PROJECT MANAGER: STEPHEN DUNBAR, AIA
 JOB NO.: WIN-HOTEL
 DRAWN BY: XXX

SHEET TITLE: PROPOSED HOTEL DEVELOPMENT

DATE:	7/1/21
SCALE:	SP = 1A2
RE: SCALE	

EXISTING BUILDING



PROJECT NUMBER: PR-208-00279

APPLICATION NUMBER:

This plan is consistent with the specific Site Development Plan approved by the Environmental Planning Commission (EPC), dated [redacted] and the Findings and Conditions in the Official Notification of Decision are satisfied.

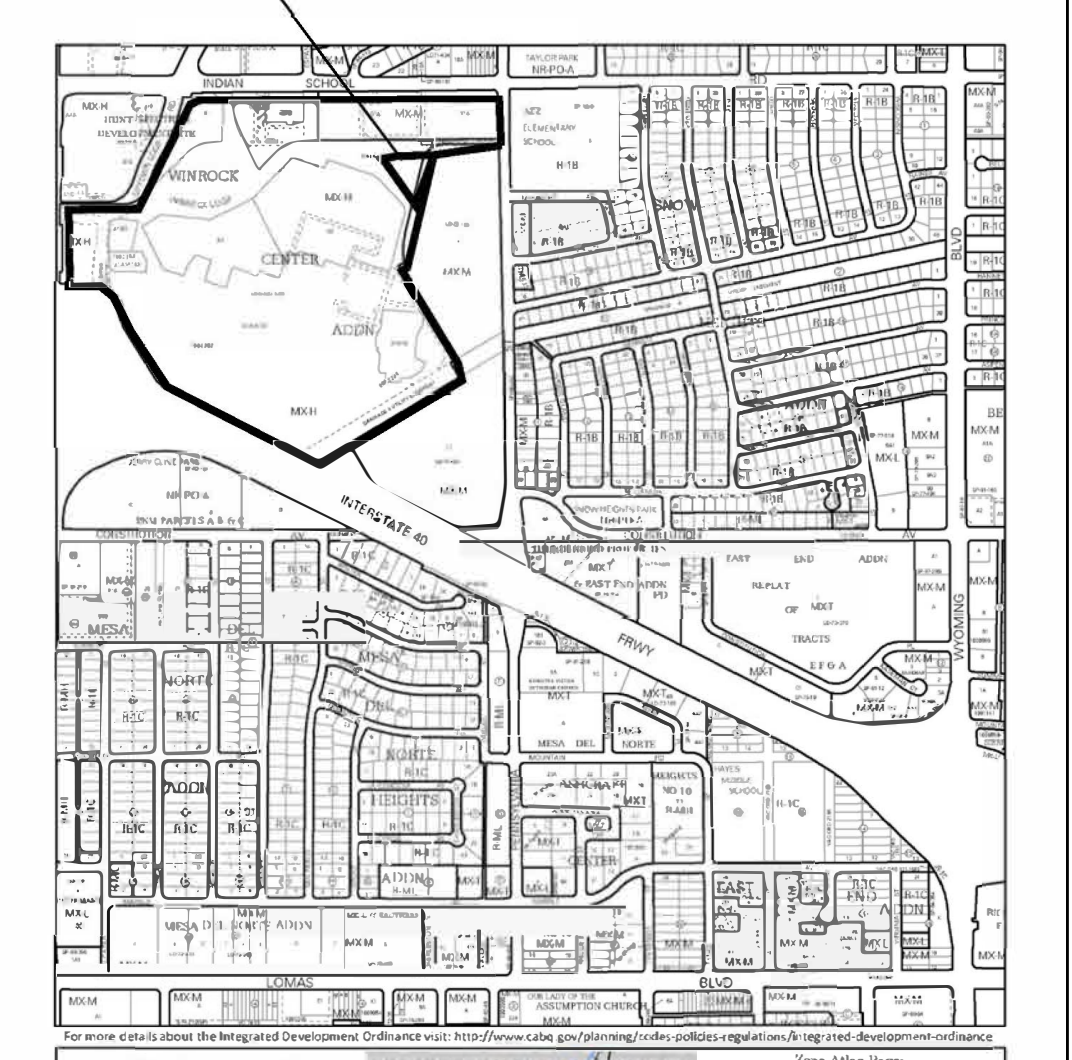
Is an Infrastructure List required? (YES / NO) If yes, then a set of approved EPC plans with a work order is required for any construction within Public Right-of-Way or for construction of public improvements.

DRS SITE DEVELOPMENT PLAN SIGNOFF APPROVAL

Traffic Engineering, Transportation Division	Date
ABCWA	Date
Parks and Recreation Department	Date
City Engineer/Hydrology	Date
Code Enforcement	Date
Environmental Health Department (conditional)	Date
Solid Waste Management	Date
DRS Chairperson, Planning Department	Date

- KEYED NOTE:
- INTEGRALLY COLORED, AND TEXTURED CONC. PEDESTRIAN CROSSWALK RE: DETAIL 1/A11
 - 20' LIGHT POLE LOCATION RE: DETAIL 3/A11
 - INTEGRALLY COLORED CONC. SIDEWALK RE: DET 2/A12
 - INDICATES EXISTING SIDEWALK AREA TO REMAIN
 - INDICATES NEW CONC. SIDEWALK FLUME WITH STEEL COVER PLATE RE: DETAIL 12/A12
 - INDICATES NEW TEMP ASPHALT 6" EXTRUDED CURB
 - INDICATES OFFSITE TEMP LANDSCAPE AREA TO BE GRAVELED ONLY (RE: LANDSCAPE PLAN)
 - INDICATES BIKE RACK LOCATION (5 BIKE CAPACITY) RE: DETAIL 11/A12
TYPICAL BIKE RACK GRAPHIC SYMBOL = [Symbol]
 - BENCH LOCATION
TYPICAL BENCH GRAPHIC SYMBOL = [Symbol]
 - TRASH RECEPTACLE [Symbol]
 - 6" STEEL BOLLARD WITH CUSTOM CAP
 - HANDICAP RAMP RE: 15/A11
 - HANDICAP RAMP RE: 16/A11
 - HANDICAP RAMP RE: 12/A11
 - HANDICAP RAMP RE: 11/A11
 - INDICATES LANDSCAPE AREA G.C TO PROVIDE/COORDINATE REQ. SLEEVING FOR EA. WELL LOCATION RE: LANDSCAPE PLAN FOR INFO
 - INDICATES 1' CURB CUT TO ALLOW FOR PASSIVE WATER SHEET FLOW HARVESTING FROM ADJACENT PAVEMENT SURFACE TO PROPOSED LANDSCAPE PLANT BEDS. RE: DETAIL 1/A11 FOR KNOTCH DETAIL
 - NOT A PART-FUTURE REDEVELOPMENT PHASE
 - 6" HIGH CONC. ISLAND RE: DET 4/A11
RE: SITE GRADING PLAN FOR INFO
 - DUAL CONFIGURATION HC PARKING STALL RE: DET 9/A12
 - WHEELSTOP RE: DET 5/A12
 - INDICATES PROPOSED MOTORCYCLE PARKING STALL LOCATION
NOTE: EACH ONSITE STALL MEASURES 4' X 8' IN SIZE
RE: SITE PLAN FOR LOCATIONS. RE: DET. 1/A12
FOR 'MOTOR CYCLE PARKING' SIGN DETAIL
 - EXTERIOR DECORATIVE RAISED CONCRETE PED. ENTRY AREA RE: DETAIL 20/A11
 - INDICATES PROPOSED CURBING TO RECEIVE FIRE STRIPE PAINT CURB RED IN COLOR
 - EXISTING ASPHALT DRIVE TO REMAIN
 - NEW ASPHALT DRIVE RE: CIVIL FOR GRADES/PROFILE
 - TIE NEW SIDEWALK INTO FACE OF EXISTING SIDEWALK LOCATION
 - HC PARKING STALL RE: DET 5/A12
 - INDICATES HOTEL/TENANT WORK SCOPE AREA
 - INDICATES EXISTING PAVEMENT/FLATWORK/LANDSCAPE/CURB AND GUTTER TO BE REMOVED
 - INDICATES ISLAND AND LANDSCAPING TO REMAIN
 - INDICATES STOP SIGN LOCATION RE: DET 3A/A12
 - INDICATES CLEAR SITE TRIANGLE. SIGNS, WALLS, TREES, AND SHRUBBERY BETWEEN 3 AND 8' FEET TALL, AS MEASURED FROM THE GUTTER PAN ARE NOT ALLOWED WITHIN CLEAR SITE TRIANGLE AREA
 - INDICATES REFUSE ENCLOSURE LOCATION RE: DET 4/A13
 - INDICATES SPEED HUMP SIGN LOCATION RE: DET 3B/A12
- NOTE: REFER TO PLAT FOR ALL EXISTING EASEMENTS WITHIN PROJECT SCOPE AREA. SLOPE NOT TO EXCEED 8%.

HOTEL PROJECT LOCATION



AGIS

J-19-Z

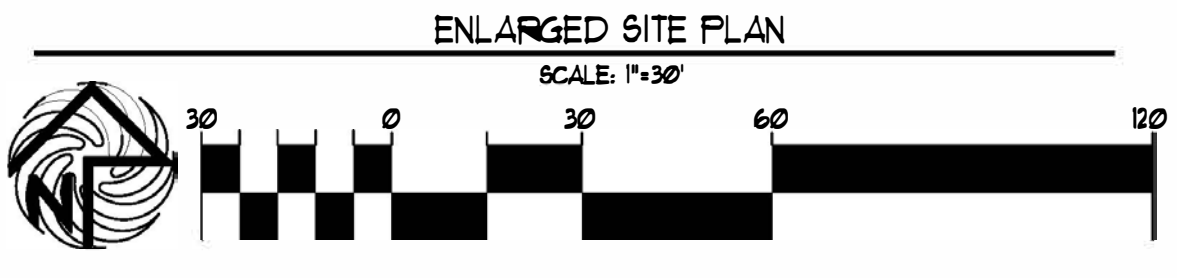
May 2018

AGIS provides information on the maps of New Jersey. The Zone Districts and Overlay Zones are not established by this map. For more information, visit the AGIS website at www.nj.gov/agis.

SITE DATA TABLE	PROJECT AREA PHASE LIMITS (LOT-A-1-A-1-A)
LEGAL DESCRIPTION	PARCEL 1-A-1 UNROCK CENTER ADDITION
TOTAL ACREAGE:	2.84 ACRES PROPOSED
EXISTING ZONING:	MX-H
PROPOSED USE:	HOTEL
PROPOSED BUILDING SIZE:	143 ROOMS
TOTAL PARKINGS PROVIDED WITHIN PROJECT AREA:	138 PARKS
TOTAL PARKING REQ.:	143 ROOMS / 3 X 2 = 99 REQUIRED PARKS
HC PROVIDED:	6 SPACES (NOTE: ALL SPACES VAN ACCESSIBLE)
HC REQUIRED:	6 SPACES
BIKE SPACES PROVIDED:	10 SPACES
BIKE SPACES REQUIRED:	6 SPACES
MOTORCYCLE SPACES PROVIDED:	3 SPACES
MOTORCYCLE SPACES REQUIRED:	3 SPACES

LINETYPE LEGEND

INTERNAL PHASE LINE	[Dashed Line]
MATCH LINE	[Dotted Line]
EXISTING PROPERTY LINE	[Solid Line]
EXISTING CURB LINE	[Dashed Line]
PROPOSED CURB LINE	[Dotted Line]



REV	DATE	BY	REVISION
1			
2			
3			
4			

MODULUS ARCHITECTS

100 SUN AVE. N.W. SUITE 600
ALBUQUERQUE, NEW MEXICO 87102
PHONE (505) 338-1499 FAX (505) 338-1498

STATE OF NEW MEXICO

REGISTERED ARCHITECT

STEPHEN A. DUNBAR

No. 4218

PROJECT TITLE: UNROCK TOWN CENTER

2020 LOUISIANA BLVD. NE ALBUQUERQUE, NEW MEXICO

JOB NO. UN-HOTEL

PROJECT MANAGER: STEPHEN DUNBAR, AIA

SHEET TITLE: PROPOSED HOTEL SITE PLAN

DRAWN BY: S

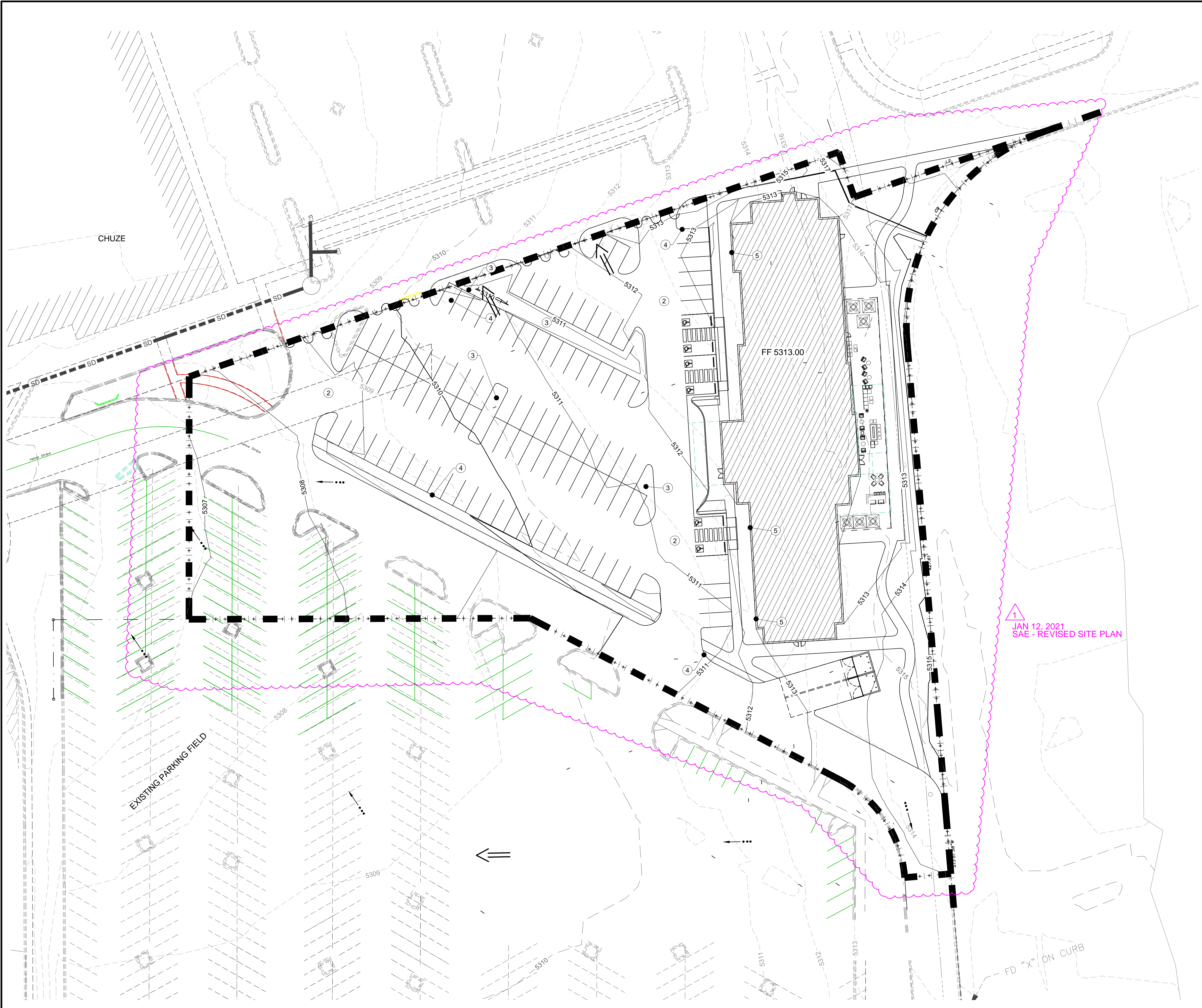
DATE: 2/16/2021

SCALE: 1"=30'

RE: SCALE

SHEET NO. 5 OF 17

Plotted: 1/12/2021 12:46:55 PM, By: EdLings, Scott
 Last Saved: 1/12/2021 12:40:00 PM, sxd5d5p



GRADING PLAN

- CONSTRUCTION NOTES**
- 1 CONSTRUCT 6" ASPHALT CURB PER COA STD. DWG. 2415
 - 2 CONSTRUCT 3" SP-C ASPHALT PARKING LOT.
 - 3 STORM WATER QUALITY POND
 - 4 CURB CUT
 - 5 ROOF DRAIN

- LEGEND**
- DISCHARGE LOCATION
 - FLOW DIRECTION
 - LIMITS OF DISTURBANCE
 - HIGH POINT

EARTHWORK SUMMARY

CUT: 1.00 CUBIC YARDS
 FILL: 1.600 CUBIC YARDS
 NET: 500 CUBIC YARDS (FILL)

AS-BUILT INFORMATION	
CONTRACTOR	DATE
WORK BY	DATE
INSPECTOR'S	DATE
PERFORMANCE BY	DATE
VERIFICATION BY	DATE
CONDUCTED BY	DATE
MICRO-FILM INFORMATION	
RECORDED BY	DATE
NO.	

BENCH MARKS	
FOUND MONUMENT "1_H19A"	DATE
A CITY OF ALBUQUERQUE BRASS DISK SET IN A CONCRETE POST	BY
0.1 FEET BELOWGROUND LEVEL AND IS STAMPED "1-H19A, 1989"	
X = 1548338.44	
Y = 1493076.47	
ELEVATION IS 5326.611 (NWD 1988)	

SURVEY INFORMATION	
FIELD NOTES	DATE
NO.	BY

ENGINEER'S SEAL

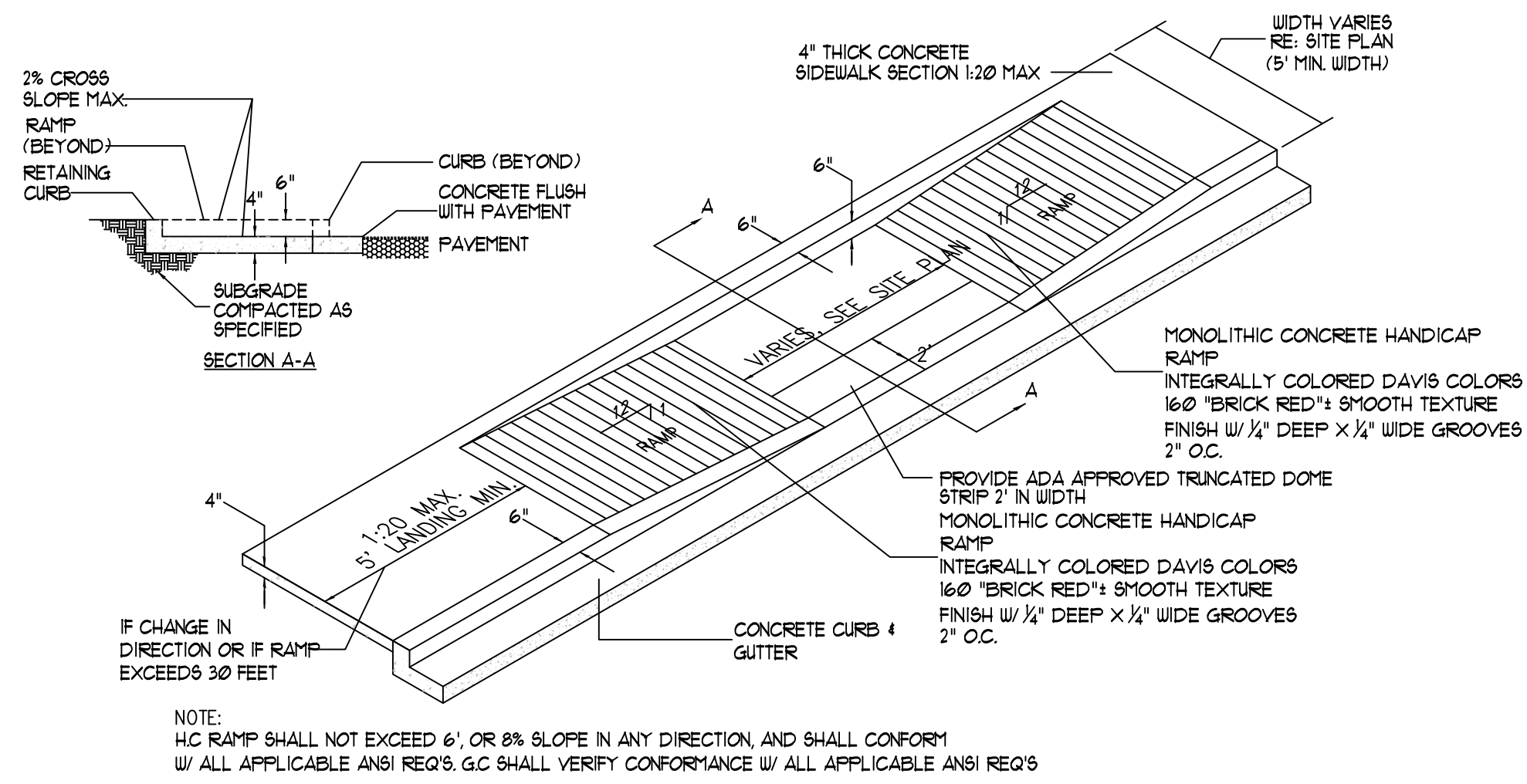
NO.	DATE	REMARKS	BY
		DESIGN	
DESIGNED BY: NV	DATE: DEC 2019		
DRAWN BY: LT	DATE: DEC 2019		
DWG NAME: C101.dwg			
CHECKED BY: SE	DATE: JAN. 1, 2020		

Designed By:
HUITT-ZOLIARS
 Huitt-Zollars, Inc. Albuquerque
 6501 Americas Parkway NE, Suite 550
 Albuquerque, New Mexico 87110
 Phone (505) 883-8114 Fax (505) 883-5022

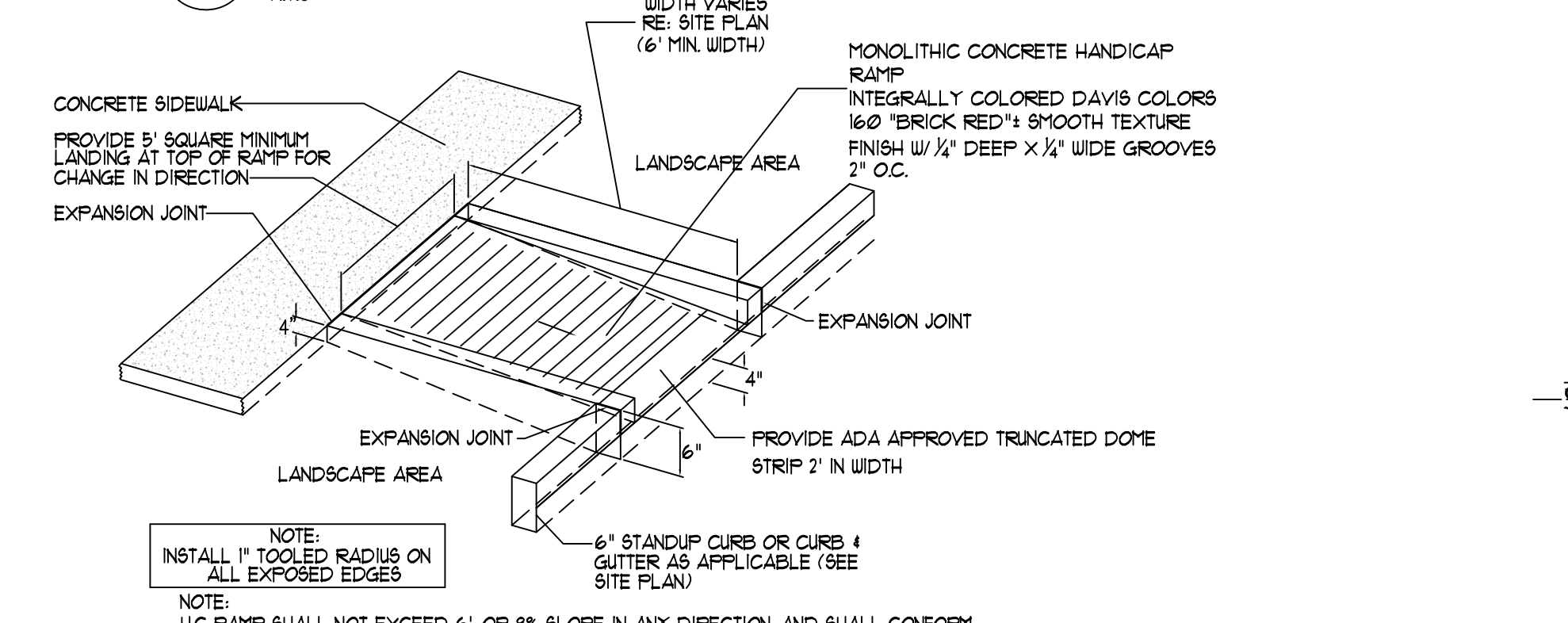
HOTEL @ WINROCK TOWN CENTER ALBUQUERQUE, NM

TITLE: **GRADING PLAN FOR DRB SITE PLAN**

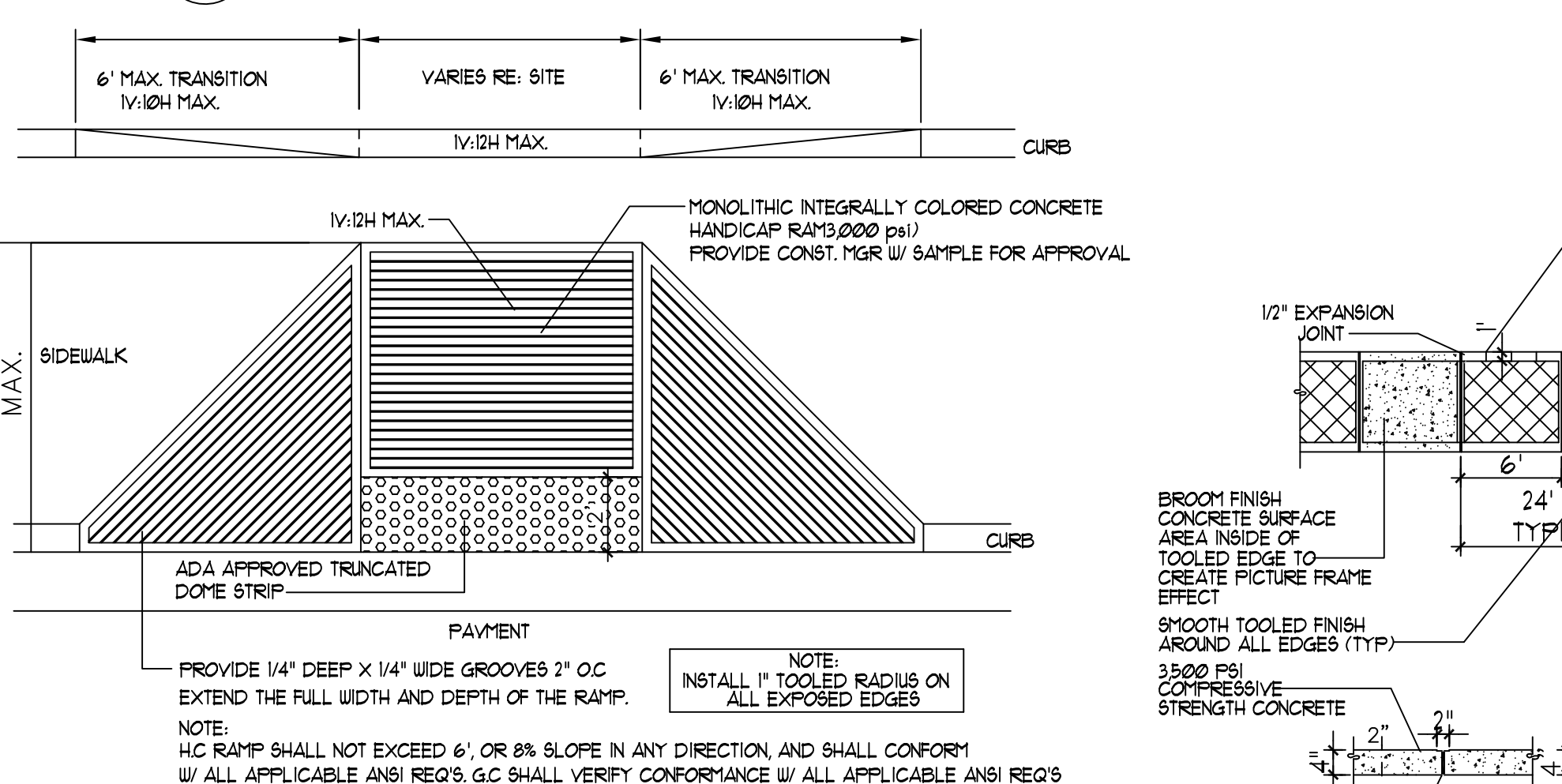
Design Review Committee	City Engineer	Mo./Day/Yr.	Mo./Day/Yr.
City Project No.	Zone Map No.	Sheet	Of
XXXX.XX	J-19	C102	



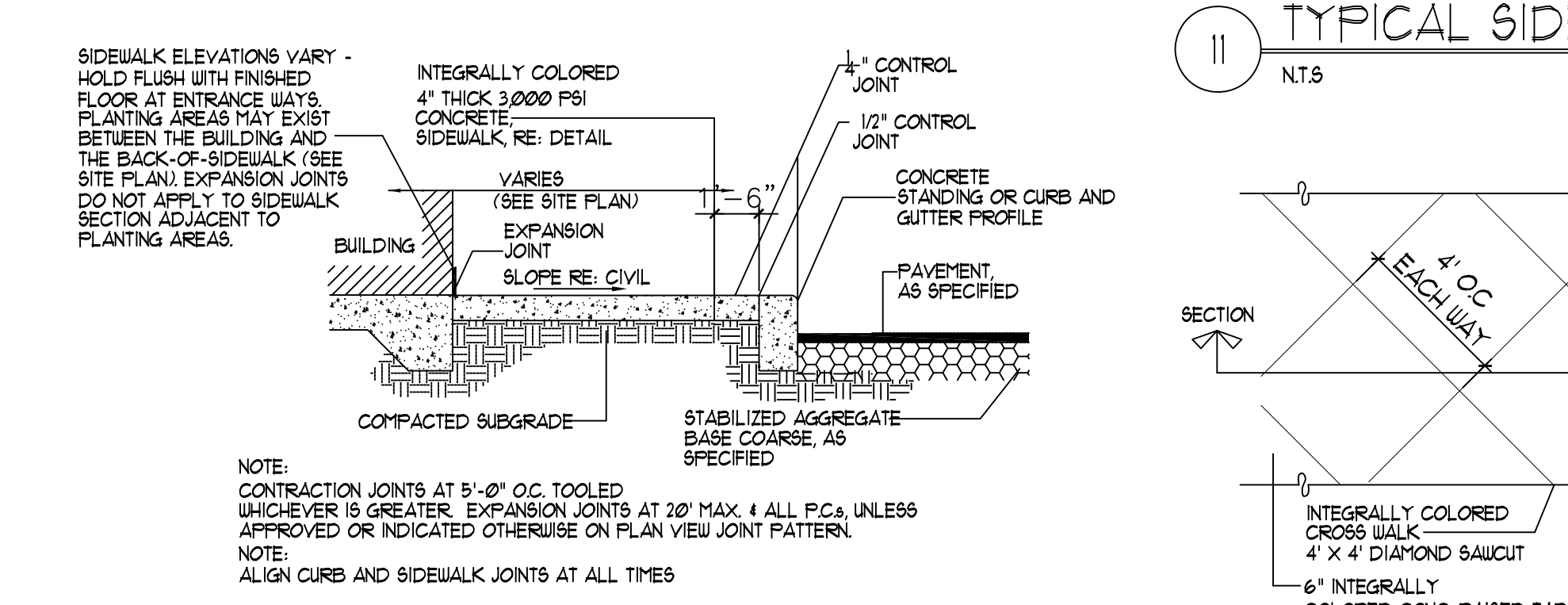
17 TAPERED H.C. RAMP
NT.S



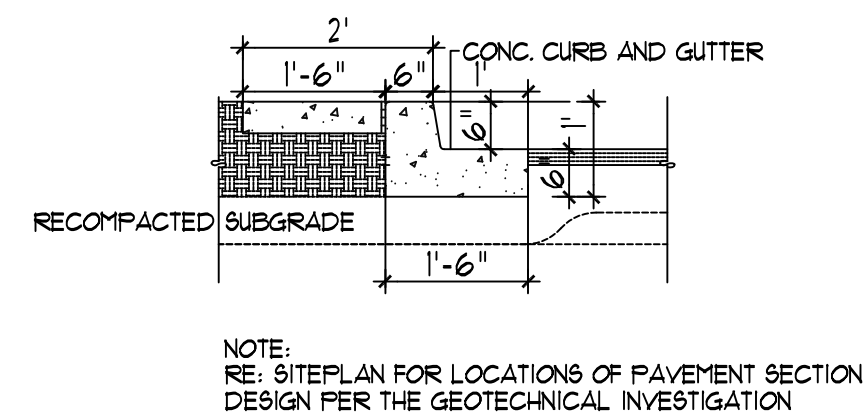
16 CURBED H.C. RAMP
NT.S



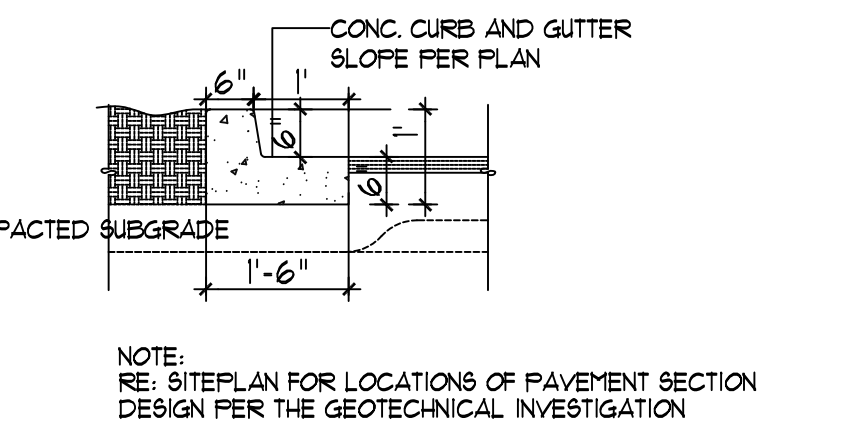
15 FLARED H.C. RAMP
NT.S



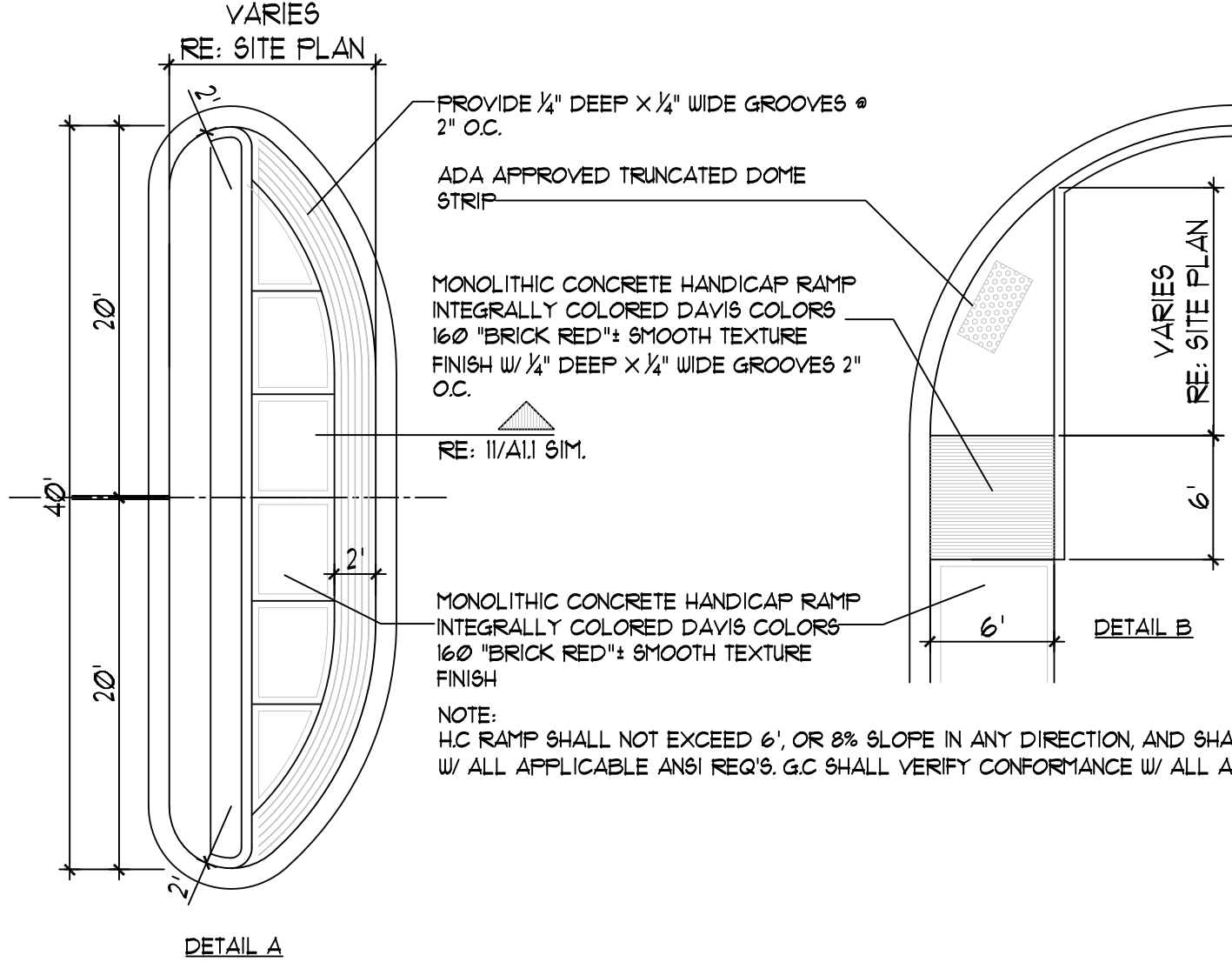
14 SIDEWALK W/ TURNDOWN CURB SECTION
NT.S



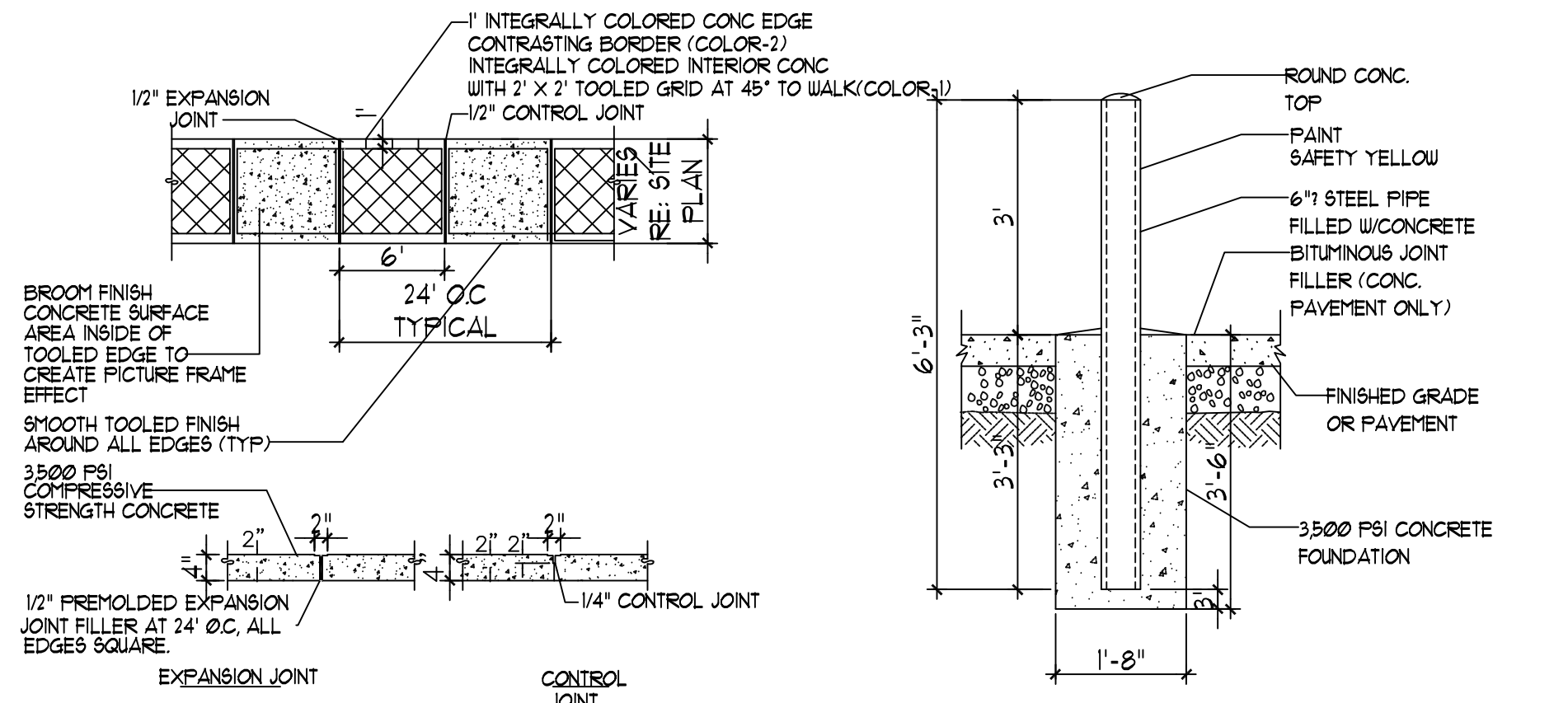
19 ISLAND CURB DETAIL
NT.S



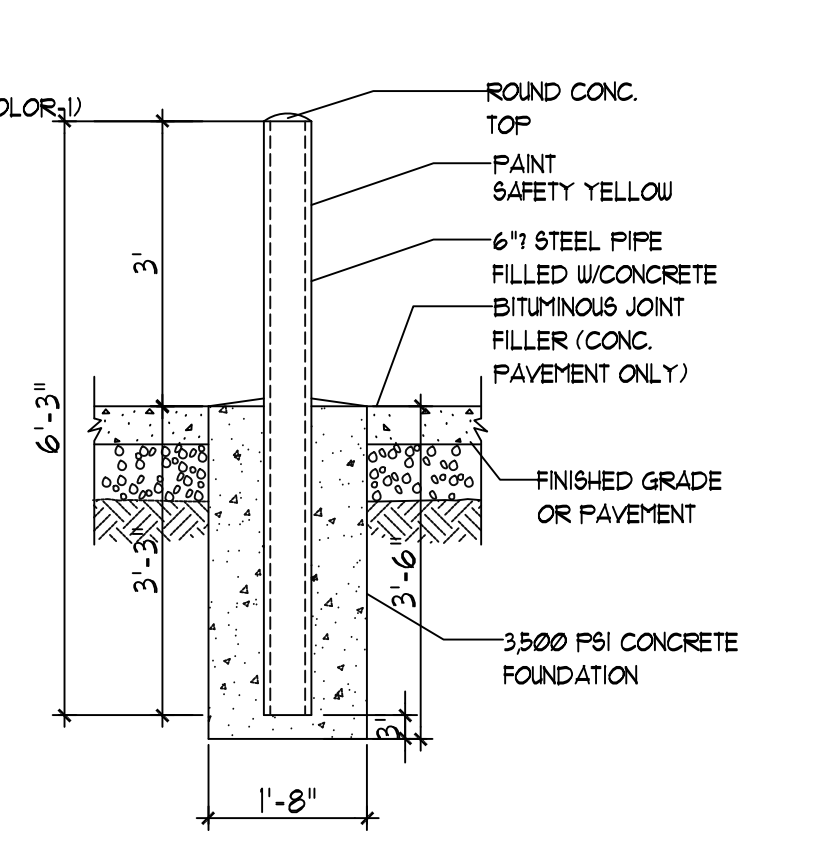
18 TYPICAL CURB DETAIL
NT.S



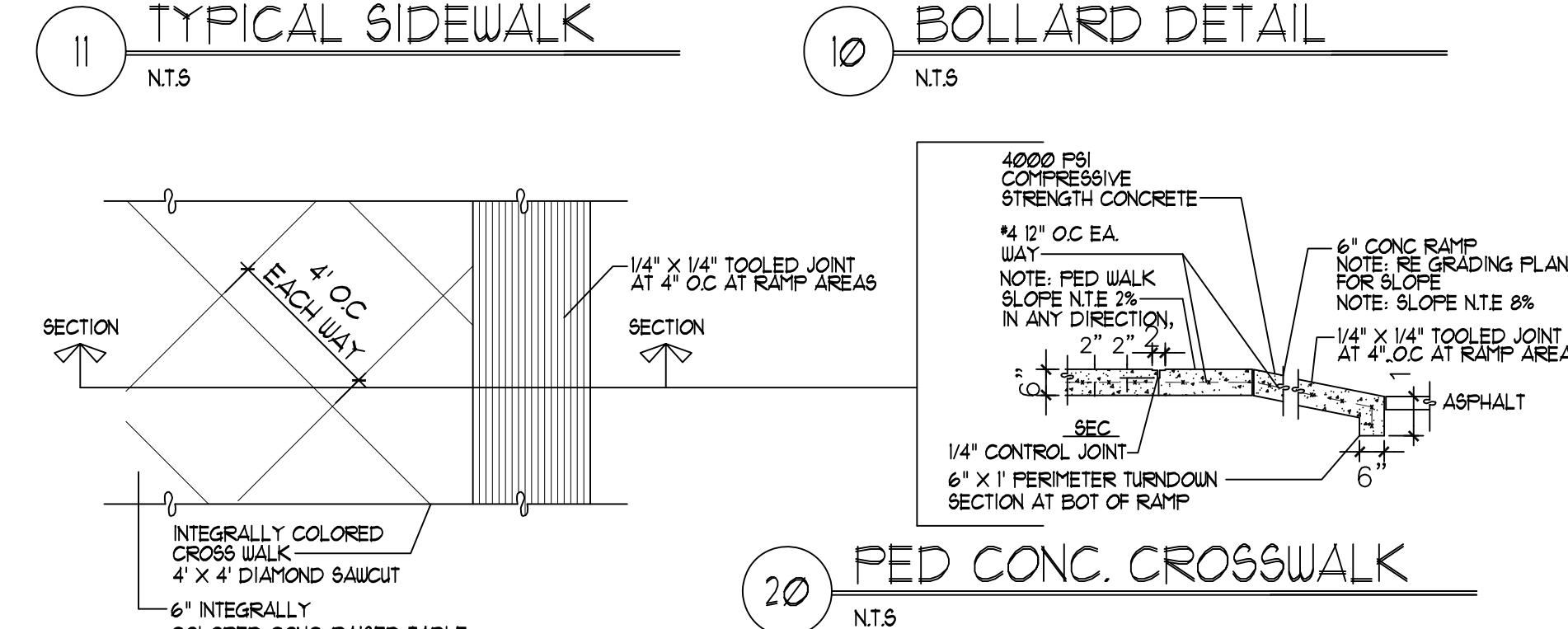
12 TYP. END ISLAND W/ WALK
NT.S



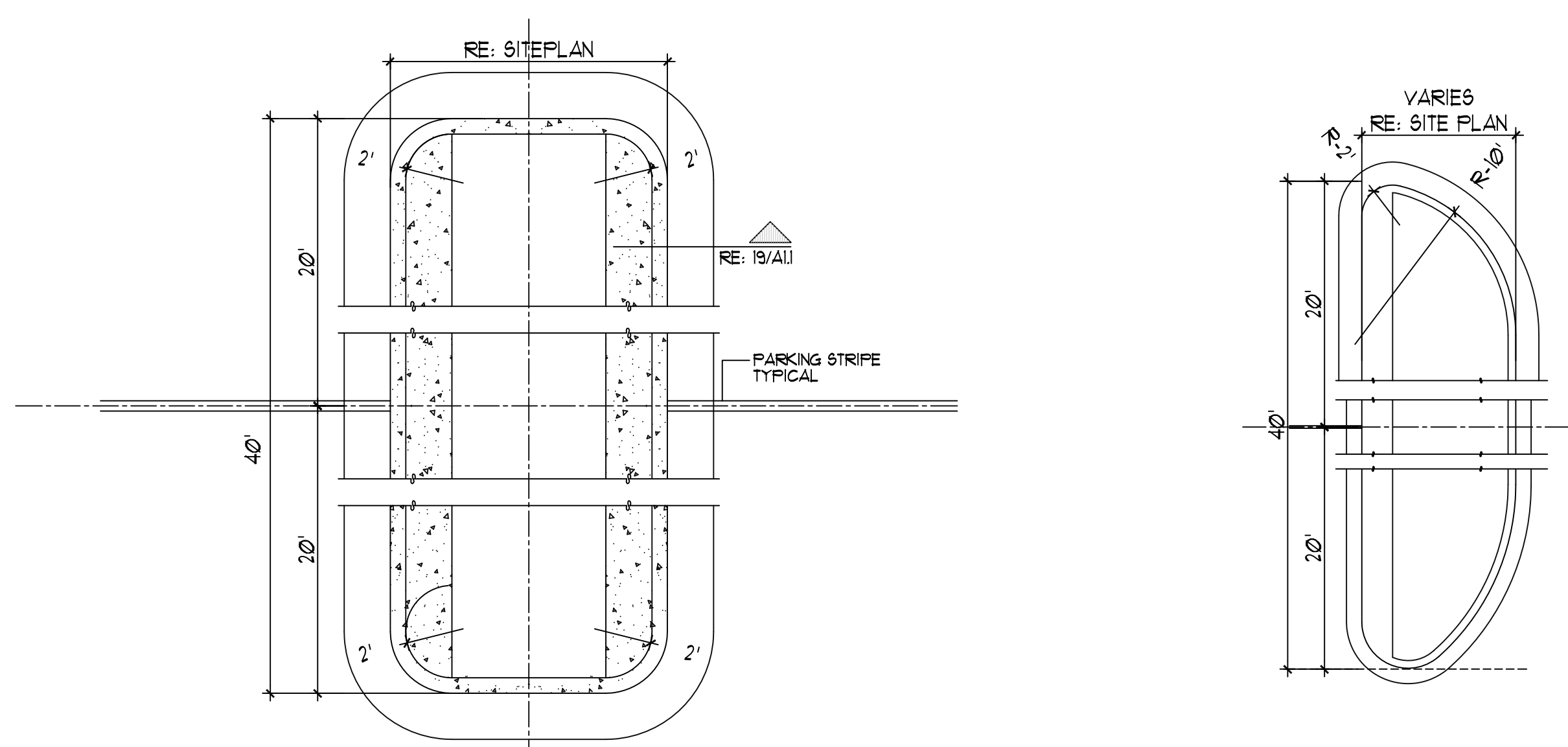
11 TYPICAL SIDEWALK
NT.S



10 BOLLARD DETAIL
NT.S

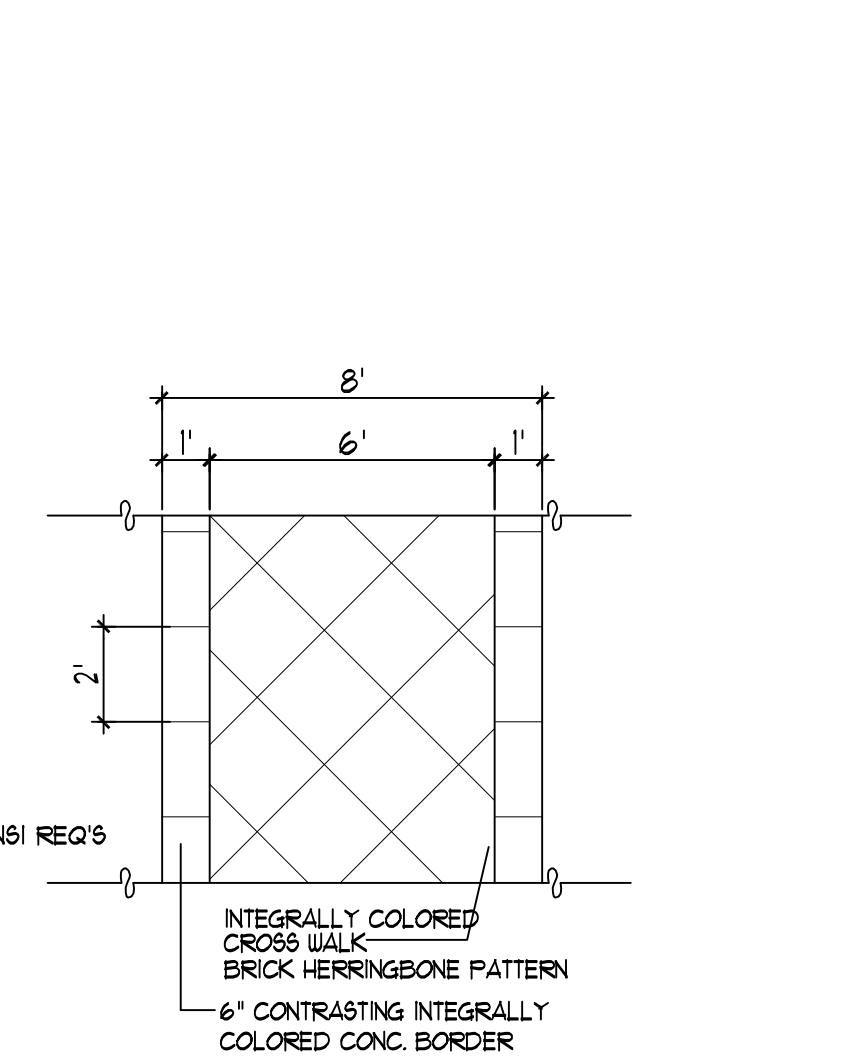


20 PED. CONC. CROSSWALK
NT.S

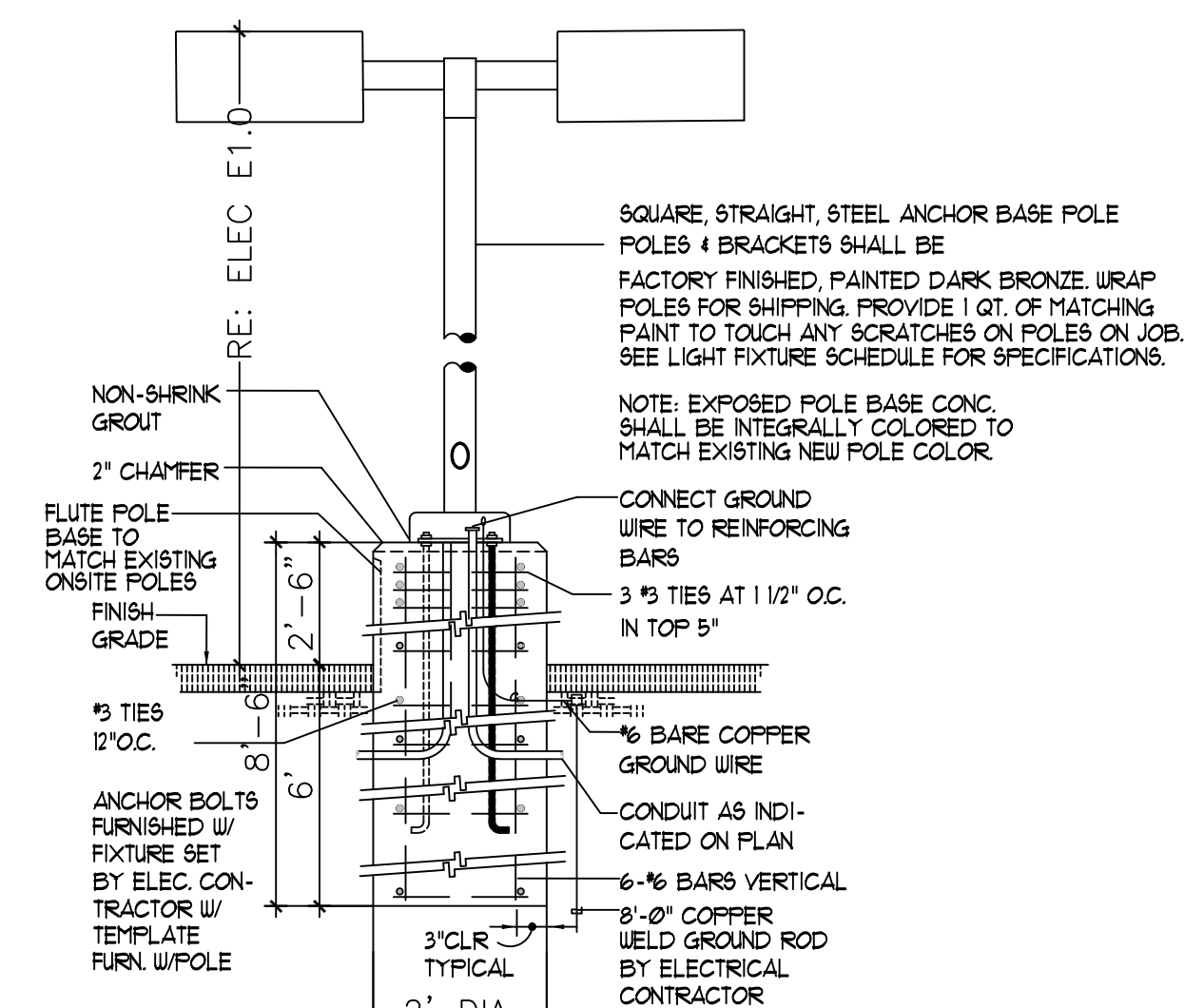


8 ISLAND DETAIL
NT.S

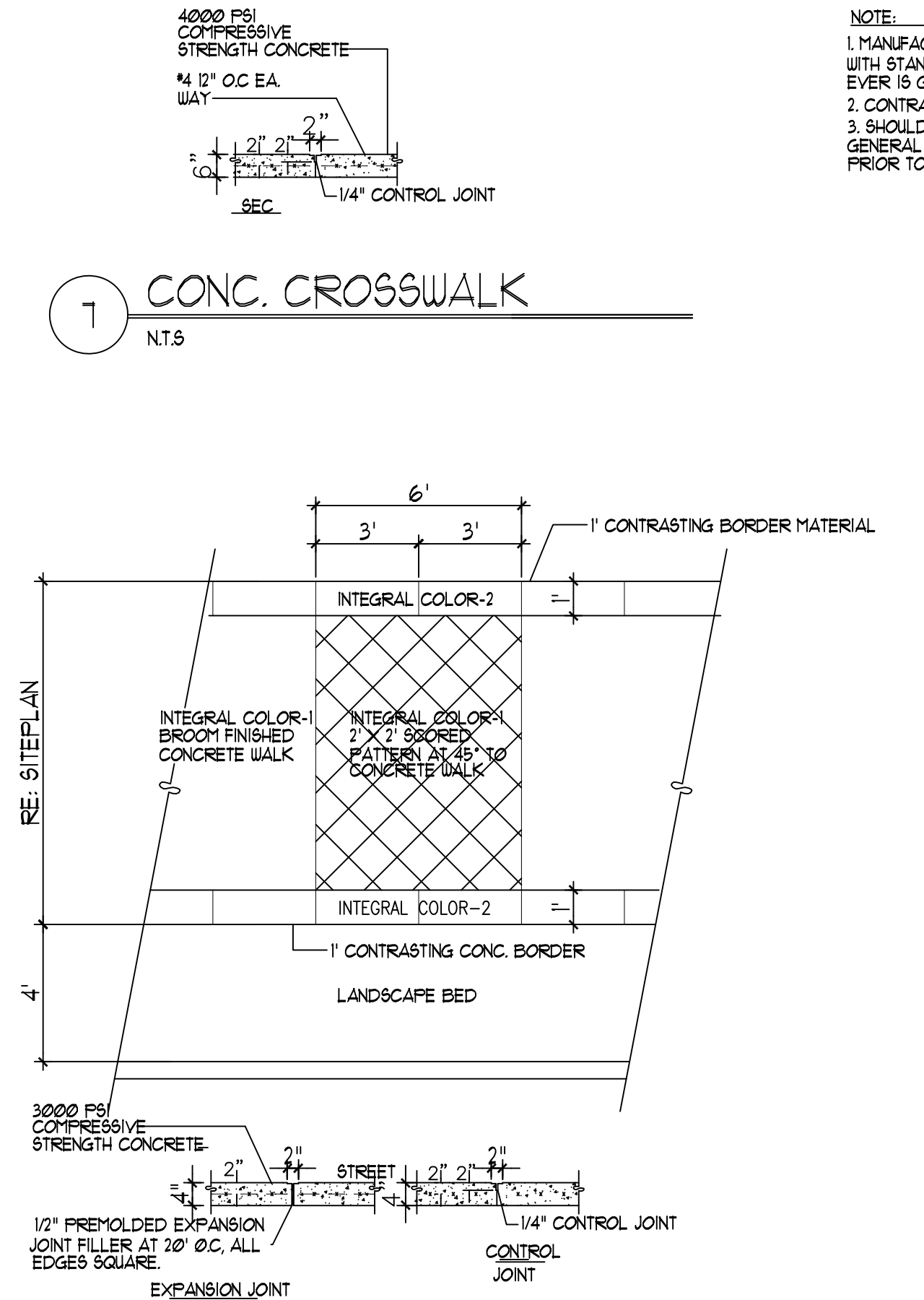
4 END ISLAND DETAIL
NT.S



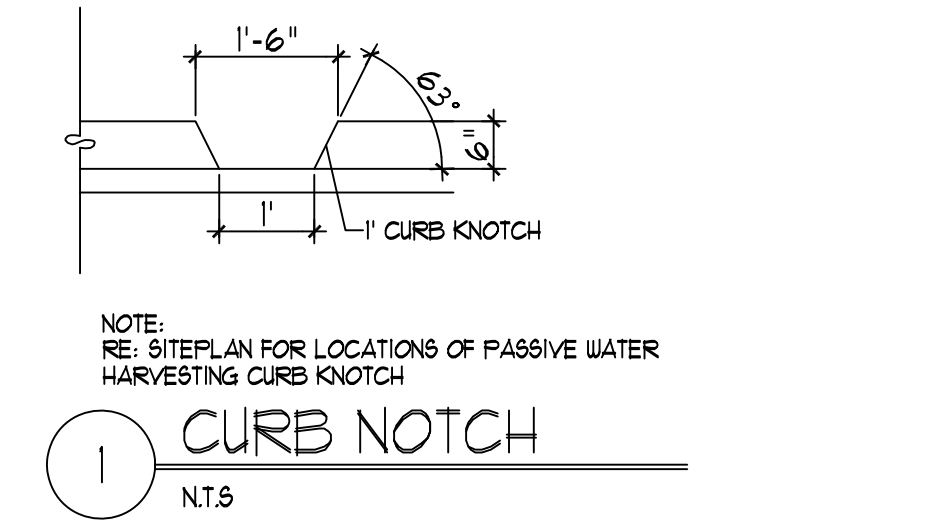
7 CONC. CROSSWALK
NT.S



3 LIGHT POLE DETAIL
NT.S



2 TYPICAL STREET SIDEWALK
NT.S



1 CURB NOTCH
NT.S

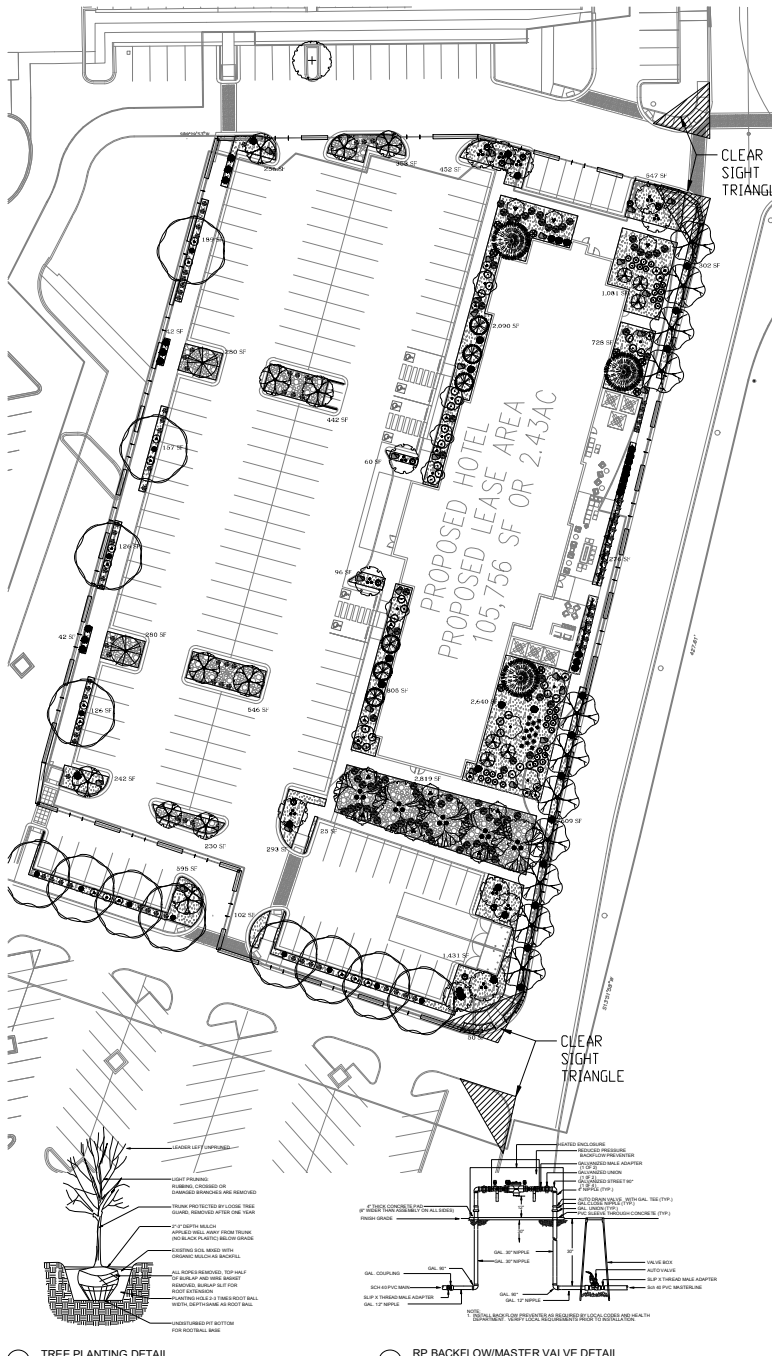
REV	DATE	BY	REVISION
6			
5			
4			
3			
2			

MODULUS ARCHITECTS
100 SUN AVE. N.W. SUITE 600
ALBUQUERQUE, NEW MEXICO 87109
PHONE (505) 338-1499 FAX (505) 338-1498



PROJECT TITLE: HOTEL SITE PLAN
2100 LOUISIANA ALBUQUERQUE, NEW MEXICO
JOB NO.: WIN-HOTEL
PROJECT MANAGER: STEPHEN DUNBAR, AIA
DRAWN BY: S
SHEET TITLE: SITE DETAILS

DATE: 2/16/21
SCALE: As Shown
Re: PLAN



LEGAL DESCRIPTION:
TRACT 14, LOTS 1-4, WINROCK CENTER ADDN REPLAT OF PARCEL A-1-A-1-A-1-A, IDO ZONE M-X

GENERAL NOTES:
1. MAINTENANCE OF THE LANDSCAPE AND IRRIGATION PROVIDED BY THE PROPERTY OWNER.
2. LANDSCAPE AREAS SHALL BE DEPRESSED TO PROVIDE POSITIVE DRAINAGE FOR SITE RUN OFF. SEE CIVIL DRAWINGS FOR DRAINAGE INFORMATION AND PLACEMENT OF CURB CUTS.
3. THE LANDSCAPE PLAN IS DESIGNED TO MEET ALL CITY OF ALBUQUERQUE, AND IDO REQUIREMENTS.
4. PLANT MATERIALS, FENCING AND SIGNING WILL NOT INTERFERE WITH CLEAR SIGHT REQUIREMENTS. THEREFORE SIGNS, WALLS, TREES, AND SHRUBBERY BETWEEN 3 AND 8 FEET TALL (AS MEASURED FROM THE CUTTER FIN) ARE NOT ACCEPTABLE IN CLEAR SIGHT TRIANGLE.
5. THE LANDSCAPE PLAN IS DESIGNED TO COMPLY WITH THE GENERAL IDO LANDSCAPING REGULATIONS (SECTION 14.16.5-6) INCLUDING PROVISION OF A MINIMUM OF 75% LIVE GROUND COVER, MEASURED AT MATURITY, OF ALL REQUIRED LANDSCAPE AREAS, AND A MINIMUM OF 20% REQUIRED VEGETATIVE COVERAGE OF GROUND LEVEL PLANTS.

PLANTING NOTES:
1. THE LANDSCAPE DESIGN SHALL COMPLY WITH THE CITY OF ALBUQUERQUE WASTE WATER CONSERVATION, LANDSCAPE, IDO, AND WATER WASTE ORDINANCE.
2. THERE IS NO NEW TURF USED IN THE DESIGN OF THE LANDSCAPE.
3. THE R.O.W. (WHEN DEDICATED TO THE PUBLIC) SHALL BE MAINTAINED BY THE PROPERTY OWNER. THE PLAN SHALL FOLLOW THE CCA DESIGN GUIDELINES FOR STREET TREES UNLESS OBTAINED BY UTILITY EASEMENTS.
4. ALL LANDSCAPE AREAS SHALL BE COVERED WITH MULCH. USE GRAVEL MULCH AT 3" DEPTH OVER FILTER FABRIC.
5. WHERE MULCH IS ADJACENT TO THE CONCRETE, FINISH GRADE OF MULCH SHALL BE APPROXIMATELY 1/2" BELOW THE TOP OF CONCRETE.

IRRIGATION NOTES:
1. ALL NEW PLANTINGS TO BE WATERED BY AUTO DRIP IRRIGATION SYSTEM.
2. WATER MANAGEMENT AND THE MAINTENANCE OF THE IRRIGATION SYSTEM IS THE SOLE RESPONSIBILITY OF THE PROPERTY OWNER.
3. THE IRRIGATION SYSTEM SHALL BE CONNECTED TO CITY WATER. THE POINT OF CONNECTION SHALL CONSIST OF A WATER METER, BACKFLOW PREVENTER, AND MASTER VALVE. SEE 1103 FOR DETAIL.
4. USE SIX 2 GPH EMITTERS PER EACH TREE AND TWO 2 GPH EMITTERS PER EACH SHRUB/GROUND COVER. USE SIX 2 GPH DRIP EMITTERS PER TREES IN POTS. SEPARATE IRRIGATION ZONES SHALL BE DESIGNED FOR TREES AND SHRUBS/GROUND COVERS.
5. INSTALL TRUST BLOCKS WHEREVER THE MAINLINE BRANES IN NINETY DEGREE ANGLE.
6. INSTALL SLEEVES TWO SIZES LARGER THAN THE SLEEVED PIPE UNDER ALL HARD SURFACES.
7. THE BACKFLOW SIZE AND LOCATION IS ASSUMED ONLY, BASED ON THE LATEST AVAILABLE UTILITY PLAN. GENERAL CONTRACTOR TO PROVIDE THE IRRIGATION WATER STUB OUT AND ELECTRICITY FOR THE HOTBOX.
8. IRRIGATION EQUIPMENT IS SHOWN ON A LARGER SCALE FOR CLARITY. THE PIPE ROUTING ON THE PLAN IS SCHEMATIC AND MAY REQUIRE FIELD ADJUSTMENTS TO AVOID INSTALLING PIPE WITHIN THE ROOT ZONE OF PLANTS OR IN CONFLICT WITH UTILITY EXISTENTS.
9. ALL SLEEVES ARE ASSUMED TO BE PLACED PRIOR HARDSCAPE WITHOUT THE NEED OF BORING.
10. SURROUNDING EXISTING AND REMAINING IRRIGATION SYSTEMS ARE TO BE INSPECTED PRIOR TO DEMOLITION IN ORDER TO DETERMINE THE MEANS NECESSARY TO PROTECT ANY SURROUNDING AND REMAINING PLANT MATERIAL AND SOIL.

SITE DATA

GROSS LOT AREA (2.43 ACRES)	106,736 SF
LESS BUILDINGS	18,204 SF
NET LOT AREA	87,532 SF
REQUIRED LANDSCAPE	13,440 SF
15% OF NET LOT AREA	13,129 SF
PROPOSED LANDSCAPE	15,258 SF
PROPOSED OFF-SITE LANDSCAPE	595 SF
TOTAL PROPOSED LANDSCAPE	15,853 SF
PERCENT OF NET LOT AREA	18.1%

REQUIRED STREET TREES PROVIDED EXISTING AT 25' O.C. SPACING ALONG STREET 28
REQUIRED PARKING LOT TREES PROVIDED AT 1 PER 10 SPACES (64 SPACES) 101
TOTAL REQUIRED TREES 49
TOTAL PROVIDED TREES 49

REQUIRED LANDSCAPE COVERAGE
75% LIVE VEGETATIVE MATERIAL (13,440 SF PROPOSED LANDSCAPE X 75%) 13,761 SF MIN.
PROVIDED GROUND COVER COVERAGE 14,025 SF
PERCENT GROUND COVER COVERAGE OF REQUIRED LANDSCAPE AREAS 76%

IRRIGATION NOTE
DRIP SYSTEM RUN CYCLES:
ESTABLISHMENT AND SUMMER:
1 HOUR/DAYS A WEEK
SPRING:
1 HOUR/2-3 DAYS A WEEK
FALL:
1 HOUR/2-3 DAYS A WEEK
WINTER:
1 HOUR/2 DAYS PER MONTH

PLANT SCHEDULE BASE 12.30.19

TREES	QTY	BOTANICAL / COMMON NAME	SIZE	WATER	ALLOWANCE	H X S
12	Pistacia chinensis / Chinese Pistache	2" B&B	Medium	60		
10	Forestiera neomexicana / New Mexican Privet	24" box	Medium	40		15' X 15'
6	Lagerstromia indica / Crape Myrtle	20 gal	High	35		15' X 15'
5	Quercus muhlenbergii / Chinquapin Oak	2" B&B	Medium	60		40' X 40'
12	Ulmus propinqua 'Emerald Sunshine' / Elm	2" B&B	Medium	60		35' X 25'
12	Vitex agnus-castus / Chaste Tree	24" box	Medium	50		20' X 20'
3	Picea pungens 'Baby Blue Eyes' / Baby Blue Eyes Spruce	6"-8" B&B	Medium	60		50' X 20'
6	Pinus leucodermis / Bosnian Pine	6"-8" B&B	Medium	60		20' X 10'
4	Malus domestica 'Golden Delicious' / Golden Delicious Apple	1 1/2" B&B	Medium +	55		20' X 25'
2	Prunus americana 'Moorpark' / Moorpark Apricot	1 1/2" B&B	Medium +	55		15' X 15'
4	Prunus avium 'Lapins' / Lapins Cherry	1 1/2" B&B	Medium +	55		20' X 20'
3	Prunus persica 'Early Elberta' / Early Elberta Peach	1 1/2" B&B	Medium +	50		15' X 15'
9	Punica granatum 'California Sunset' / California Sunset Pomegranate	15 gal	High	40		10' X 8'
8	Lonicera japonica 'Purpurea' / Purple Japanese Honeyuckle	5 gal	Medium+	40		Climbing x 10'
9	Berberis thunbergii 'Atropurpurea' / Red Leaf Japanese Barberry	5 gal	Medium	40		4' X 4'
35	Lavandula angustifolia / English Lavender	5 gal	Medium	25		3' X 3'
30	Rhus aromatica 'Gro-Low' / Gro-Low Fragrant Sumac	5 gal	Low+	40		4' X 4'
10	Rosa x Knockout 'TM' / Rose	5 gal	Medium	30		6' X 5'
10	Zauschneria garretii 'Orange Carpet' / Hummingbird Trumpet	1 gal	Low+	25		3' X 4'
30	Yucca pendula / Soft Leaf Yucca	5 gal	RW	35		5' X 4'
41	Rosmarinus officinalis 'Arp' / Arp Rosemary	5 gal	Low+	40		6' X 4'
90	Calamagrostis x acutiflora 'Karl Foerster' / Feather Reed Grass	1 gal	Medium	20		30' X 2'
70	Miscanthus sinensis 'Gracillimus' / Maiden Grass	1 gal	Medium+	20		5' X 5'
14	Muhlenbergia rigida 'Nashville' / Purple Muhly	1 gal	Low+	20		2' X 3'

DECIDUOUS TREES	QTY	BOTANICAL / COMMON NAME	SIZE	WATER	ALLOWANCE	H X S
10	Forestiera neomexicana / New Mexican Privet	24" box	Medium	40		15' X 15'
6	Lagerstromia indica / Crape Myrtle	20 gal	High	35		15' X 15'
5	Quercus muhlenbergii / Chinquapin Oak	2" B&B	Medium	60		40' X 40'
12	Ulmus propinqua 'Emerald Sunshine' / Elm	2" B&B	Medium	60		35' X 25'
12	Vitex agnus-castus / Chaste Tree	24" box	Medium	50		20' X 20'

EVERGREEN TREES	QTY	BOTANICAL / COMMON NAME	SIZE	WATER	ALLOWANCE	H X S
3	Picea pungens 'Baby Blue Eyes' / Baby Blue Eyes Spruce	6"-8" B&B	Medium	60		50' X 20'
6	Pinus leucodermis / Bosnian Pine	6"-8" B&B	Medium	60		20' X 10'

FRUIT TREES	QTY	BOTANICAL / COMMON NAME	SIZE	WATER	ALLOWANCE	H X S
4	Malus domestica 'Golden Delicious' / Golden Delicious Apple	1 1/2" B&B	Medium +	55		20' X 25'
2	Prunus americana 'Moorpark' / Moorpark Apricot	1 1/2" B&B	Medium +	55		15' X 15'
4	Prunus avium 'Lapins' / Lapins Cherry	1 1/2" B&B	Medium +	55		20' X 20'
3	Prunus persica 'Early Elberta' / Early Elberta Peach	1 1/2" B&B	Medium +	50		15' X 15'
9	Punica granatum 'California Sunset' / California Sunset Pomegranate	15 gal	High	40		10' X 8'

VINES	QTY	BOTANICAL / COMMON NAME	SIZE	WATER	ALLOWANCE	H X S
8	Lonicera japonica 'Purpurea' / Purple Japanese Honeyuckle	5 gal	Medium+	40		Climbing x 10'

DECIDUOUS SHRUBS	QTY	BOTANICAL / COMMON NAME	SIZE	WATER	ALLOWANCE	H X S
9	Berberis thunbergii 'Atropurpurea' / Red Leaf Japanese Barberry	5 gal	Medium	40		4' X 4'
35	Lavandula angustifolia / English Lavender	5 gal	Medium	25		3' X 3'
30	Rhus aromatica 'Gro-Low' / Gro-Low Fragrant Sumac	5 gal	Low+	40		4' X 4'
10	Rosa x Knockout 'TM' / Rose	5 gal	Medium	30		6' X 5'
10	Zauschneria garretii 'Orange Carpet' / Hummingbird Trumpet	1 gal	Low+	25		3' X 4'

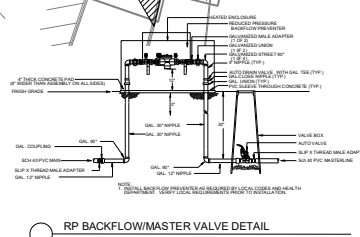
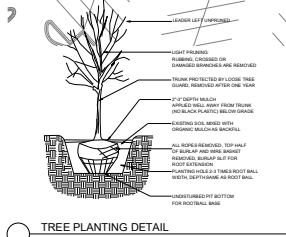
DESERT ACCENTS	QTY	BOTANICAL / COMMON NAME	SIZE	WATER	ALLOWANCE	H X S
30	Yucca pendula / Soft Leaf Yucca	5 gal	RW	35		5' X 4'
41	Rosmarinus officinalis 'Arp' / Arp Rosemary	5 gal	Low+	40		6' X 4'

EVERGREEN SHRUBS	QTY	BOTANICAL / COMMON NAME	SIZE	WATER	ALLOWANCE	H X S
90	Calamagrostis x acutiflora 'Karl Foerster' / Feather Reed Grass	1 gal	Medium	20		30' X 2'
70	Miscanthus sinensis 'Gracillimus' / Maiden Grass	1 gal	Medium+	20		5' X 5'
14	Muhlenbergia rigida 'Nashville' / Purple Muhly	1 gal	Low+	20		2' X 3'

GRASSES	QTY	BOTANICAL / COMMON NAME	SIZE	WATER	ALLOWANCE	H X S
90	Calamagrostis x acutiflora 'Karl Foerster' / Feather Reed Grass	1 gal	Medium	20		30' X 2'
70	Miscanthus sinensis 'Gracillimus' / Maiden Grass	1 gal	Medium+	20		5' X 5'
14	Muhlenbergia rigida 'Nashville' / Purple Muhly	1 gal	Low+	20		2' X 3'

REFERENCE NOTES SCHEDULE BASE 12.30.19

SYMBOL	DESCRIPTION	QTY	DETAIL
[Symbol]	Large Boulder	29	
[Symbol]	Amaranto 3/8 - 1 1/4" Gravel 3" Depth over Filter Fabric	13,392 sf	
[Symbol]	2-4" Blue Sals Cobble 4" Depth	4,956 sf	



growing better **Up**
Heads
LANDSCAPE CONTRACTORS
www.headsuplandscape.com

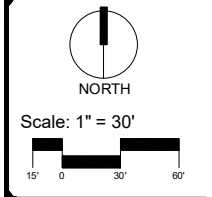
P O Box 10597
Albuquerque, NM 87184
505.898.9615
505.898.2105 (fax)
design@hulic.com



Date: 10/23/2019
Revisions:
▲ 12/30/2019
▲ 01/15/2020
▲
▲

Drawn by: VBLOUNT
Reviewed by: CM

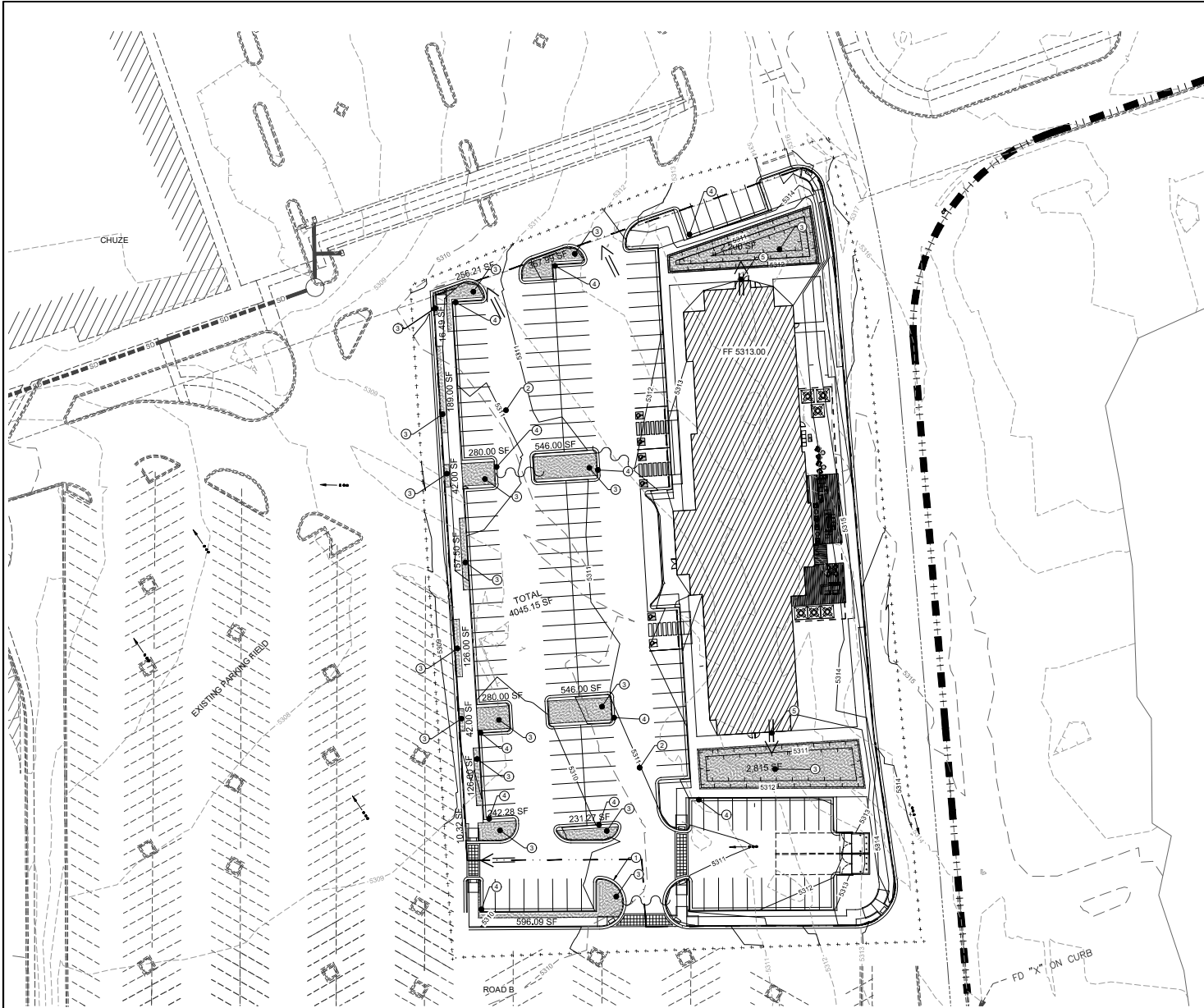
**Hotel At Winrock
Landscape Plan**
2100 Louisiana Blvd
Albuquerque, New Mexico



Sheet Title:
**Landscape
Plan**

Sheet Number:
LP-01

Revised: 07/11/2019 10:00:15 AM, P:\162429_0000\162429.dwg
 User: C:\Users\jzoliars\Documents\Projects\162429_0000\162429.dwg
 Date: 07/11/2019 10:00:15 AM, User: jzoliars



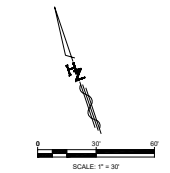
GRADING PLAN

- CONSTRUCTION NOTES**
- ① CONSTRUCT 6" ASPHALT CURB PER COA STD. DWG. 2415
 - ② CONSTRUCT 3" SP-C ASPHALT PARKING LOT
 - ③ STORM WATER QUALITY POND
 - ④ CURB CUT
 - ⑤ ROOF DRAIN

- LEGEND**
- DISCHARGE LOCATION
 - FLOW DIRECTION
 - LIMITS OF DISTURBANCE
 - HIGH POINT

EARTHWORK SUMMARY

CUT: 1.00 CUBIC YARDS
 FILL: 1.00 CUBIC YARDS
 NET: 0.00 CUBIC YARDS (FILL)



Designed By:
HUITZ-ZOLIARS
 Huitz-Zoliars, Inc. Albuquerque
 6201 Americas Parkway NE, Suite 500
 Albuquerque, New Mexico 87110
 Phone: (505) 963-6114 Fax: (505) 963-5022

MARRIOTT SUITES @
WINROCK TOWN CENTER
ALBUQUERQUE, NM

TITLE: GRADING PLAN FOR DRB SITE PLAN

Design Review Committee	City Engineer	Ms./Dsr./Tr.	Ms./Dsr./Tr.

City Project No. XXXX.XX Zone Map No. J-19 Sheet C102 Of

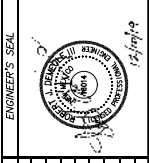
AS BUILT INFORMATION

NO.	FIELD NOTES	DATE	BY

CONTRACTOR

NO.	FIELD NOTES	DATE	BY

ENGINEER'S SEAL



NO.	DATE	REVISIONS	BY

DESIGNED BY: J.V. DATE: DEC 2019
 DRAWN BY: LT DATE: DEC 2019
 DWG NAME: C101.dwg
 CHECKED BY: SE DATE: DEC 2019

SHEET