

**DEKKER
PERICH
SABATINI**

7601 JEFFERSON NE, SUITE 100
ALBUQUERQUE, NM 87109

ARCHITECT

ENGINEER

PROJECT

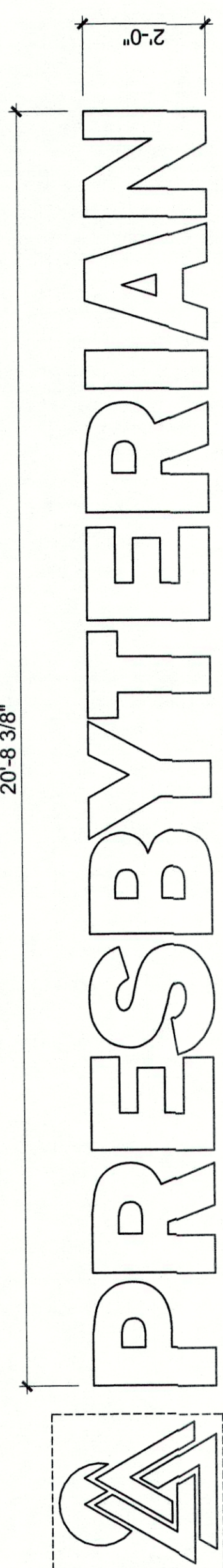
PHS AMBULATORY CARE FACILITY
COORS BLDV. NW
ALBUQUERQUE, NM

REVISIONS

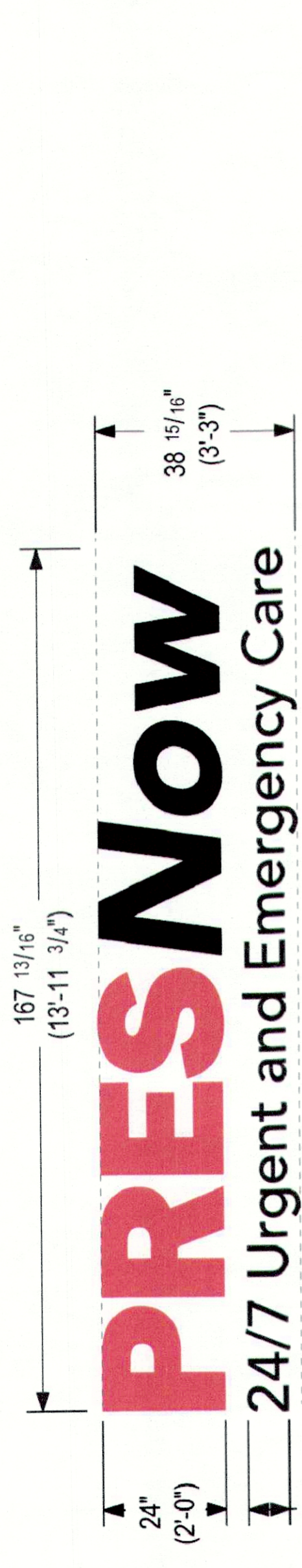
DRAWN BY
REVIEWED BY
DATE 11/1/2018
PROJECT NO. 18-0103.001
DRAWING NAME
SIGN ELEVATIONS

SHEET NO. **SDP3-4**
OF

ILLUMINATION: Internal
Style: Reverse Channel Halo Lit
Light Source: LED Modules
Primary Power Source Input Required: 277v
Circuit Required: 20 Amp Dedicated
Timer or Disk to Dawn (Photo Cell): TBD
Power Supply LED Driver Input Voltage: 100-277V AC
Power Supply LED Driver Listed: UL
Service Disconnect Switch: Yes - On Sign
Amp Draw: TBD
LUMINANCE NOT TO EXCEED 200 FOOT LAMBERTS
OR 685 NITS AT NIGHT

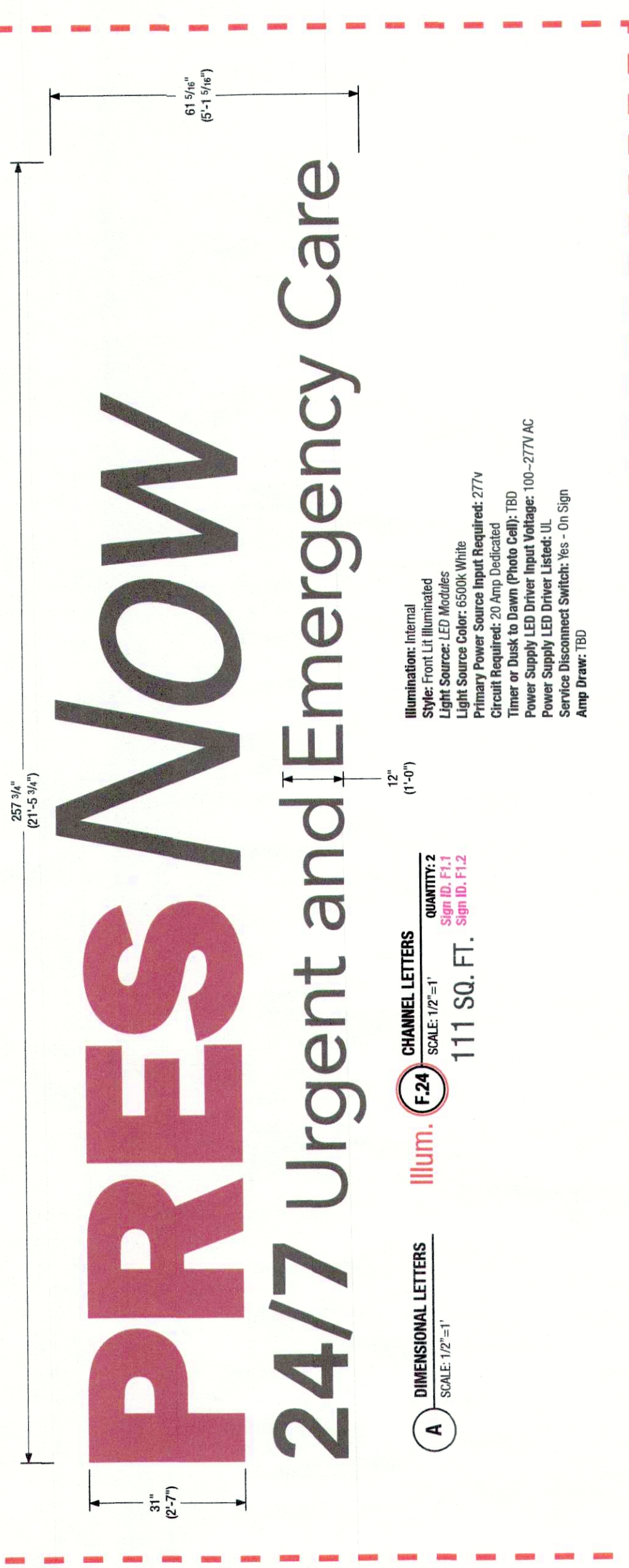


D3 CHANNEL LETTER WALL SIGN (TYPE A)
1/2" = 1'-0"



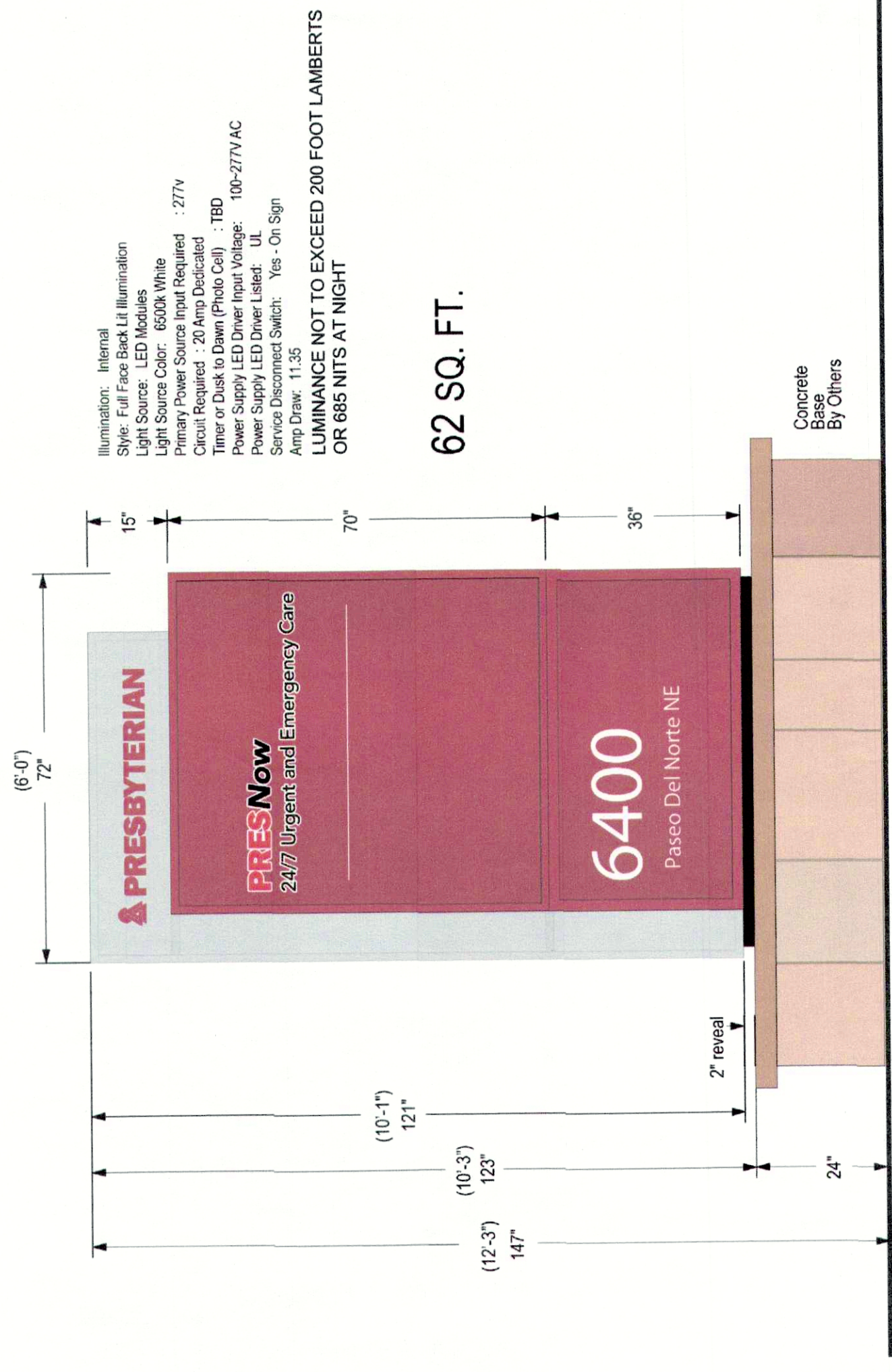
C3 CHANNEL LETTER WALL SIGN (TYPE B)
1/2" = 1'-0"
45 SQ. FT.
Sign Type Approved by DRB 3/22/2019

Proposed Major Amendment Requires DRB Approval

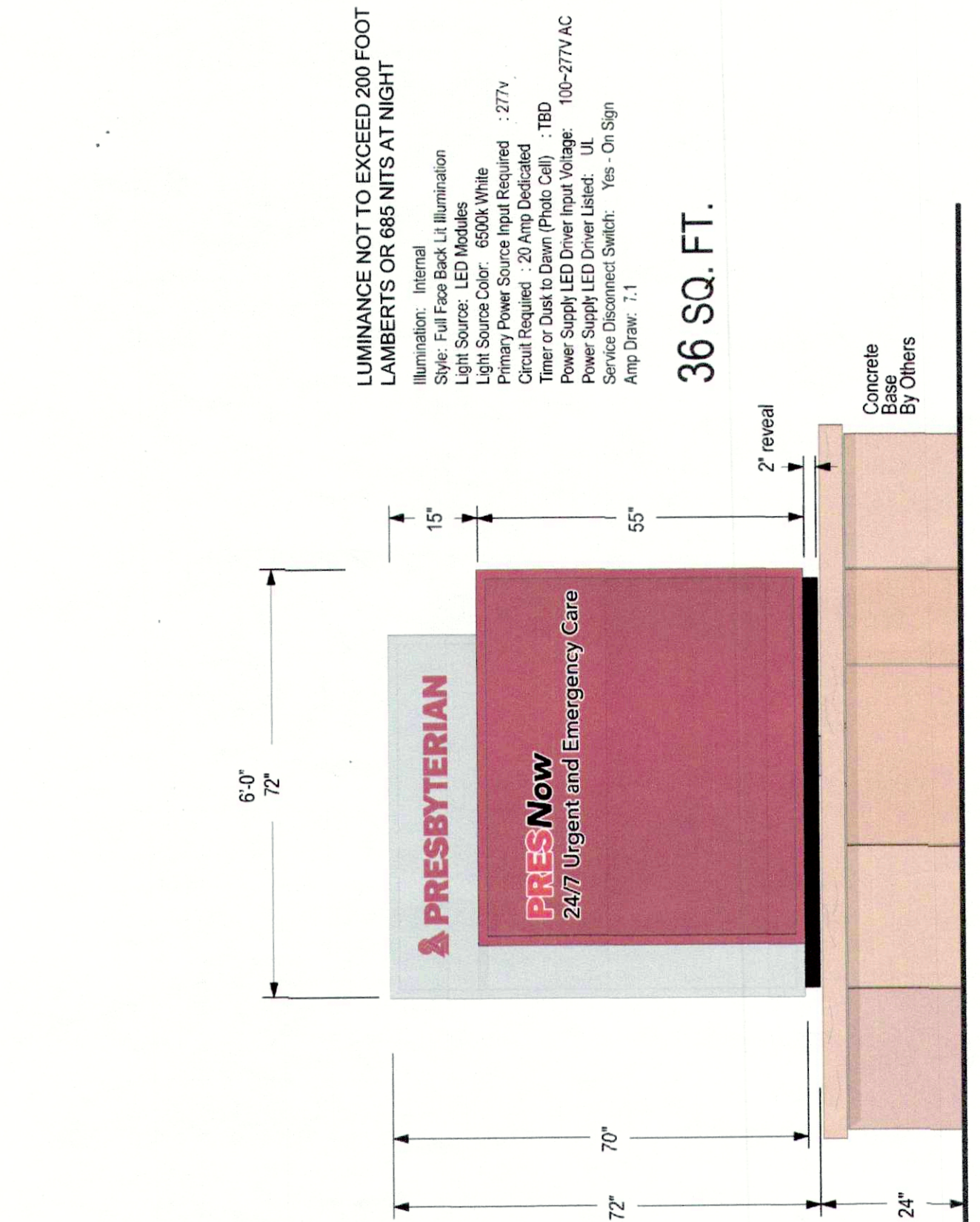


A DIMENSIONAL LETTERS SCALE: 1/2" = 1'
F24 CHANNEL LETTERS SCALE: 1/2" = 1'
111 SQ. FT. Sign ID: F1.2
ILLUM. Sign ID: F1.2
ILLUMINATION: Internal
Style: Reverse Channel Halo Lit
Light Source: LED Modules
Primary Power Source Input Required: 277v
Circuit Required: 20 Amp Dedicated
Timer or Disk to Dawn (Photo Cell): TBD
Power Supply LED Driver Input Voltage: 100-277V AC
Power Supply LED Driver Listed: UL
Service Disconnect Switch: Yes - On Sign
Amp Draw: TBD

**APPROVED SIGN IS 45 SF
PROPOSED IS 111 SF
66 SF = 60% INCREASE**



A3 MONUMENT SIGN (TYPE C)
1/2" = 1'-0"
Sign Type Approved by DRB 3/22/2019



A5 MONUMENT SIGN (TYPE D)
1/2" = 1'-0"
Sign Type Approved by DRB 3/22/2019