

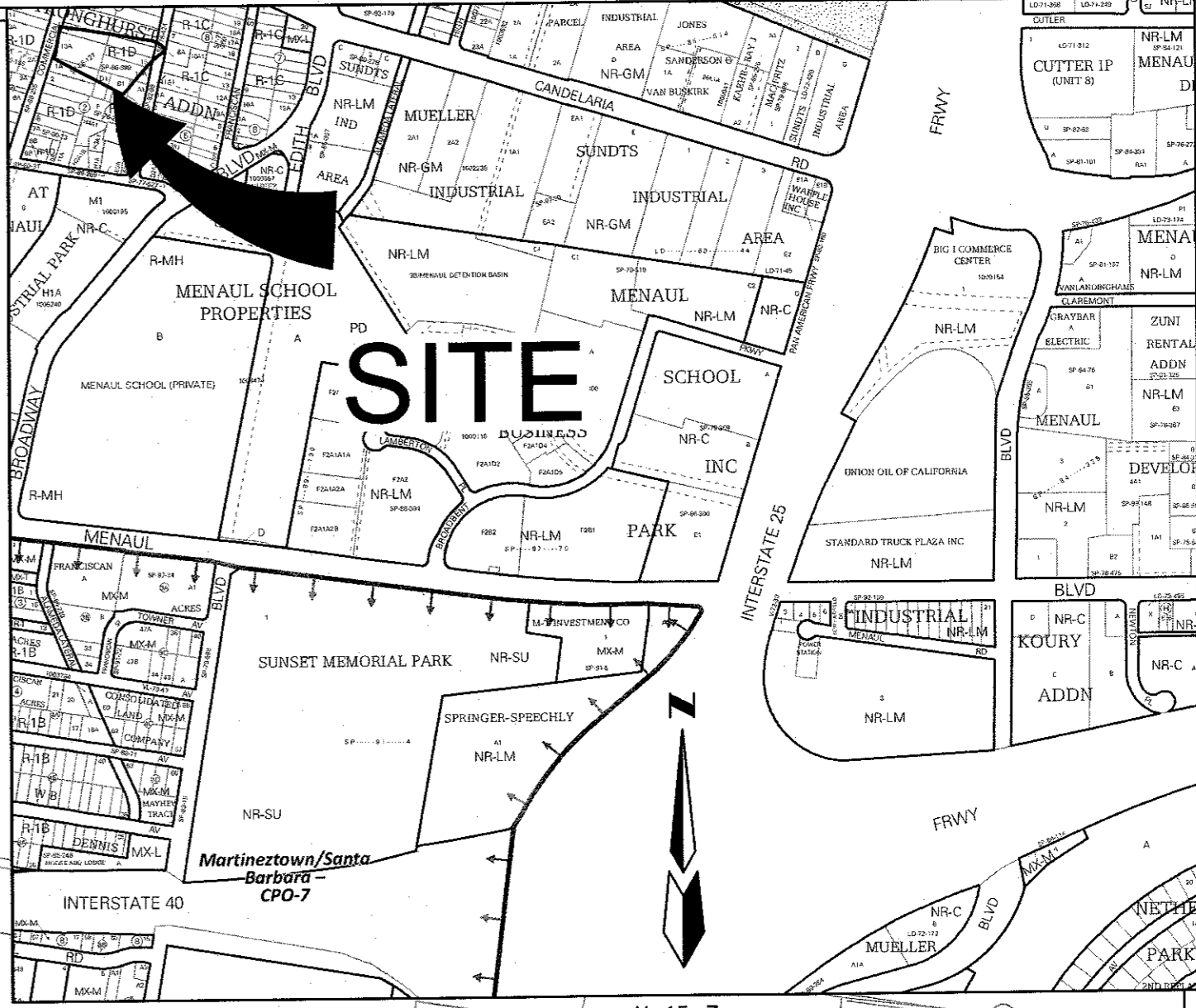
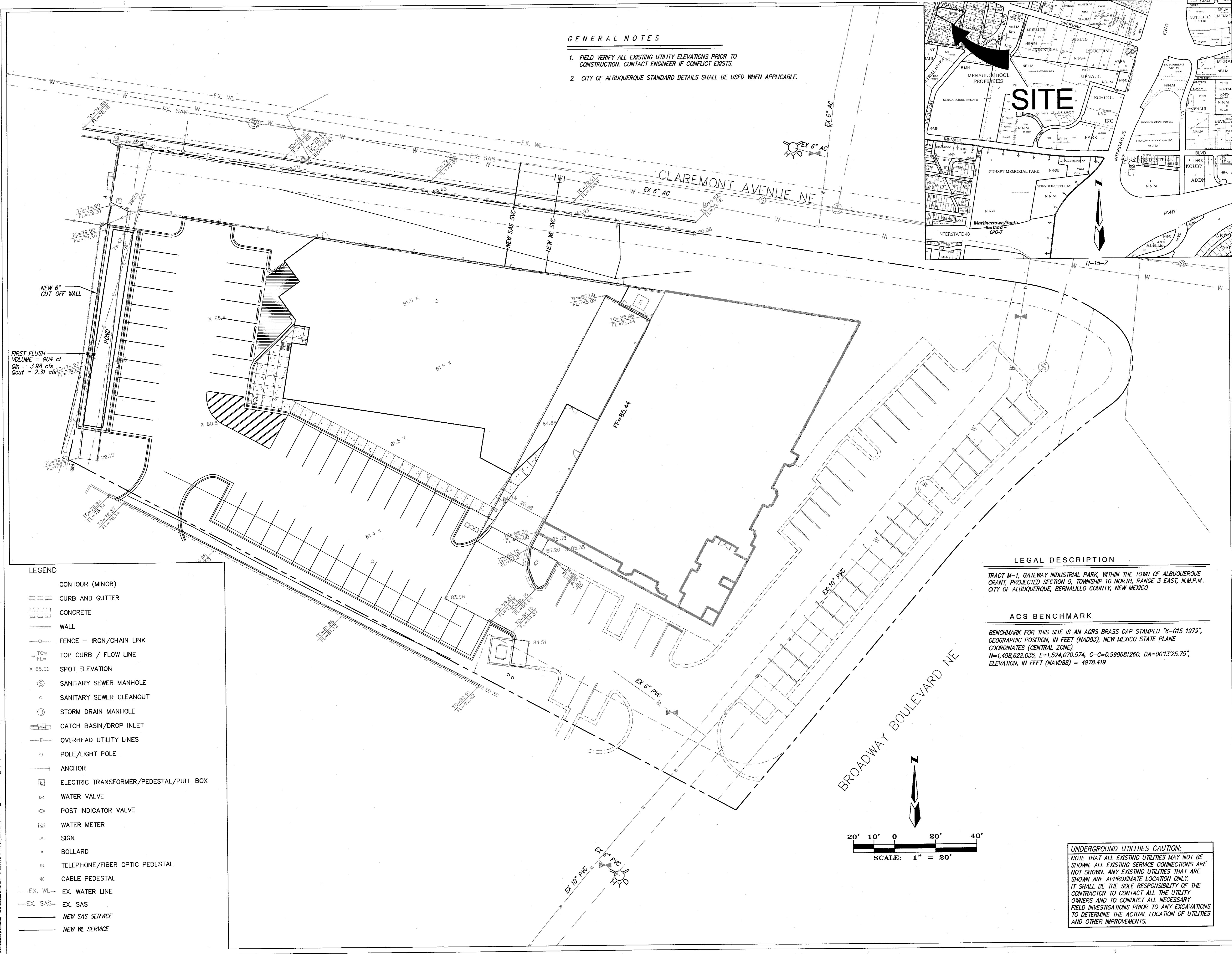
REVISIONS

△	
△	
△	
△	

DRAWN BY	
REVIEWED BY	
DATE	9/5/18
PROJECT NO.	18-0057.001
DRAWING NAME	CONCEPTUAL MASTER UTILITY PLAN

GENERAL NOTES

1. FIELD VERIFY ALL EXISTING UTILITY ELEVATIONS PRIOR TO CONSTRUCTION. CONTACT ENGINEER IF CONFLICT EXISTS.
2. CITY OF ALBUQUERQUE STANDARD DETAILS SHALL BE USED WHEN APPLICABLE.



FIRST FLUSH
VOLUME = 904 cf
Q_{in} = 3.98 cfs
Q_{out} = 2.31 cfs

LEGEND

--- (dashed)	CONTOUR (MINOR)
--- (dashed)	CURB AND GUTTER
--- (dotted)	CONCRETE
— (solid)	WALL
— (dashed)	FENCE - IRON/CHAIN LINK
TC/FL	TOP CURB / FLOW LINE
x 65.00	SPOT ELEVATION
⊙	SANITARY SEWER MANHOLE
○	SANITARY SEWER CLEANOUT
⊕	STORM DRAIN MANHOLE
⊠	CATCH BASIN/DROP INLET
— (dashed)	OVERHEAD UTILITY LINES
○	POLE/LIGHT POLE
⊙	ANCHOR
⊠	ELECTRIC TRANSFORMER/PEDESTAL/PULL BOX
x	WATER VALVE
⊠	POST INDICATOR VALVE
⊠	WATER METER
⊠	SIGN
○	BOLLARD
⊠	TELEPHONE/FIBER OPTIC PEDESTAL
⊠	CABLE PEDESTAL
— (dashed)	EX. WL - EX. WATER LINE
— (dashed)	EX. SAS - EX. SAS
— (solid)	NEW SAS SERVICE
— (solid)	NEW WL SERVICE

LEGAL DESCRIPTION

TRACT M-1, GATEWAY INDUSTRIAL PARK, WITHIN THE TOWN OF ALBUQUERQUE GRANT, PROJECTED SECTION 9, TOWNSHIP 10 NORTH, RANGE 3 EAST, N.M.P.M., CITY OF ALBUQUERQUE, BERNALILLO COUNTY, NEW MEXICO

ACS BENCHMARK

BENCHMARK FOR THIS SITE IS AN AGRS BRASS CAP STAMPED "6-G15 1979", GEOGRAPHIC POSITION, IN FEET (NAD83), NEW MEXICO STATE PLANE COORDINATES (CENTRAL ZONE), N=1,498,622.035, E=1,524,070.574, C-C=0.999681260, DA=0013'25.75", ELEVATION, IN FEET (NAVD88) = 4978.419

UNDERGROUND UTILITIES CAUTION:
NOTE THAT ALL EXISTING UTILITIES MAY NOT BE SHOWN. ALL EXISTING SERVICE CONNECTIONS ARE NOT SHOWN. ANY EXISTING UTILITIES THAT ARE SHOWN ARE APPROXIMATE LOCATION ONLY. IT SHALL BE THE SOLE RESPONSIBILITY OF THE CONTRACTOR TO CONTACT ALL THE UTILITY OWNERS AND TO CONDUCT ALL NECESSARY FIELD INVESTIGATIONS PRIOR TO ANY EXCAVATIONS TO DETERMINE THE ACTUAL LOCATION OF UTILITIES AND OTHER IMPROVEMENTS.

P:\ALBUQUERQUE\ABC BUILDING EXPANSION\PLANS\UTILITIES\18022_M\UTILITY.dwg, 9/20/2018 4:45:35 PM, SPS