

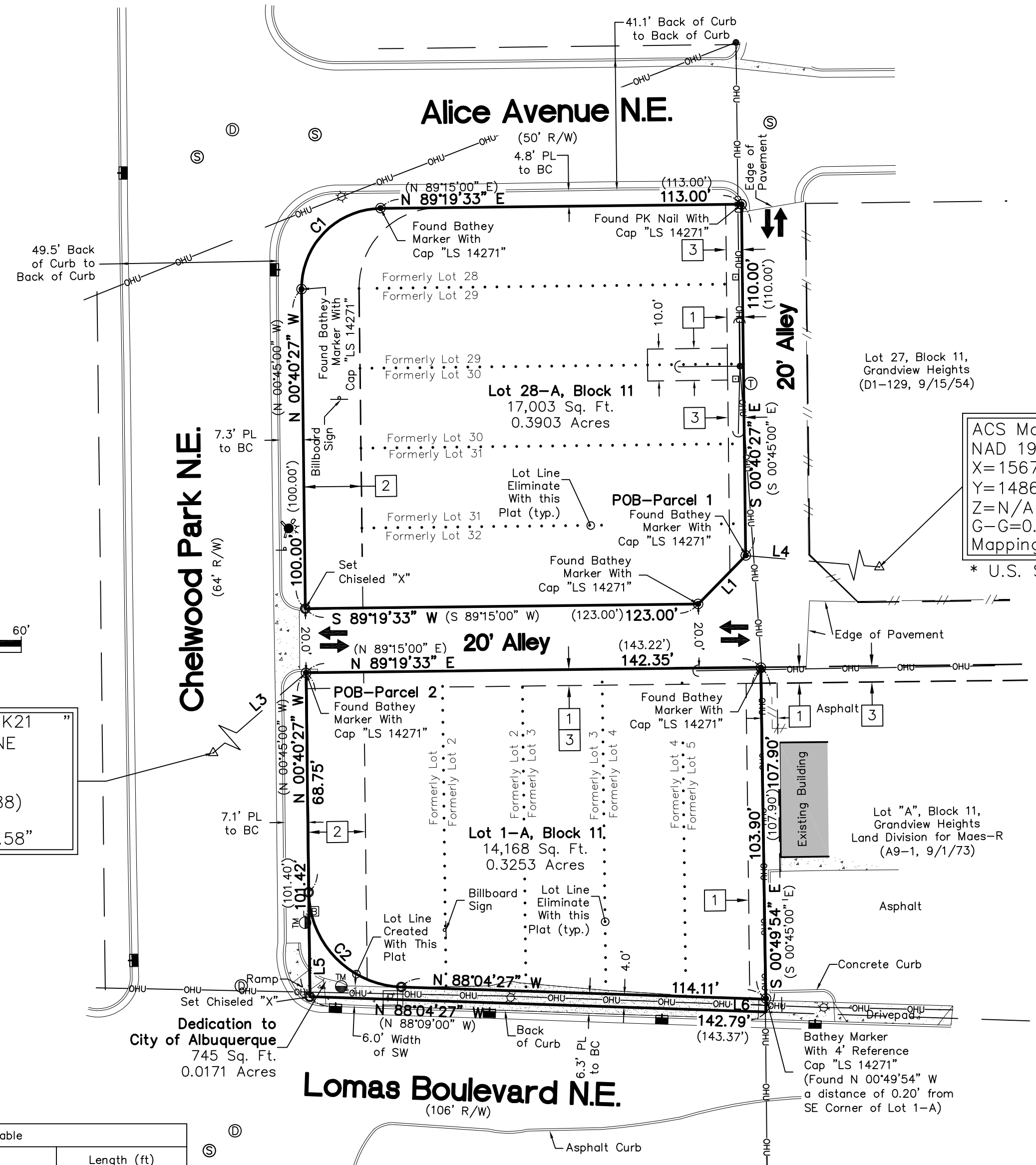
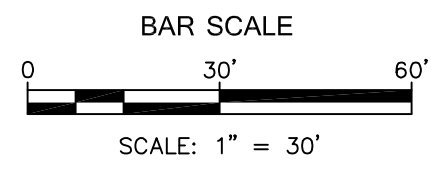
**Site Sketch for
Lots 1-A and 28-A, Block 11
Grandview Heights
Being Comprised of
Lots 1-5, 28-32, Block 11 and
An 18 Foot Portion of Vacated
Chelwood Park Right of Way,
Grandview Heights
City of Albuquerque
Bernalillo County, New Mexico
October 2018**

Legend

N 90°00'00" E	MEASURED BEARINGS AND DISTANCES
(N 90°00'00" E)	RECORD BEARINGS AND DISTANCES (9/15/54, D1-129)
●	FOUND MONUMENT AS INDICATED
○	SET BATHEY MARKER "LS 14271" UNLESS OTHERWISE NOTED
.....	LOT LINE ELIMINATED WITH THIS PLAT
▒	CONCRETE
▒	ASPHALT PATH
—OHU—	OVERHEAD UTILITY LINE
•	UTILITY POLE
—	ANCHOR
□	SIGNAL BOX
⊕	TRAFFIC MAST
⊙	LIGHT POLE
⊗	FIRE HYDRANT
⊕	SANITARY SEWER MANHOLE
⊙	STORM DRAIN MANHOLE
⊕	STORM DRAIN INLET
—OR—	SIGN
↕	CURB CUT/INDICATION OF ACCESS TO ROADWAY

ACS Monument " 23-J23 "
NAD 1983 CENTRAL ZONE
X=1567924.556 *
Y=1486720.372 *
Z=N/A * (NAVD 1988)
G-G=0.999630554
Mapping Angle=-0°08'21.44"
* U.S. SURVEY FEET

ACS Monument " 10-K21 "
NAD 1983 CENTRAL ZONE
X=1561095.888 *
Y=1485161.269 *
Z=5557.514 * (NAVD 1988)
G-G=0.999645218
Mapping Angle=-0°09'08.58"



Line #	Direction	Length (ft)
L1	S 44°19'33" W	21.21' (21.21')
L2	S 81°42'04" E	18.03'
L3	S 55°26'58" W	3287.46'
L4	S 85°06'08" E	4000.18'
L5	N 00°40'27" W	32.67'
L6	S 00°49'54" E	4.00'

Curve #	Length	Radius	Delta	Chord Length	Chord Direction
C1	39.27' (39.27')	25.00' (25.00')	90°00'00"	35.36'	N 44°19'33" E
C2	45.76'	30.00'	87°24'00"	41.45'	N 44°22'27" W

Easement Notes

- EXISTING 5' P.U.E. (9/15/54, D1-129)
- VACATED 18' OF CHELWOOD PARK RESERVED AS AN EASEMENT PER VACATION DOCUMENT (V-72-4) RECORDED (3/10/72, BK. MISC. 251, PG. 606)
- EXISTING 5' P.U.E. & D.E. (9/15/54, D 290-631)

CSI-CARTESIAN SURVEYS INC.
P.O. BOX 44414 RIO RANCHO, N.M. 87174
Phone (505) 896 - 3050 Fax (505) 891 - 0244