

LEGEND	
	EXISTING BUILDING TO REMAIN; NOT PART OF PROJECT
	EXISTING ASPHALT PATH TO REMAIN
	EXISTING GRASS
	PROPERTY LINE
	FH FIRE HYDRANT
	HC HANDICAP PARKING SIGN (SEE DETAIL C2/AS502)
	LP LIGHT POLE
	WS WHEEL STOP BUMPERS (SEE DETAIL E4/AS501)
	PP POWER POLE
	EXISTING TREES AND SHRUBS TO REMAIN
	LIMITS OF CONSTRUCTION

Approved for Access Solid Waste Department
HERMAN GALLEGOS 02-16-21

GENERAL SHEET NOTES; CONT.

F. ALL CURBS IN PARKING LOT TO BE CURB AND GUTTER. SEE DETAIL E4/AS502.

SITE DATA

PROPOSED SINGING ARROW COMMUNITY CENTER: 14,716 SF
ZONE: NR-PD-A

GENERAL SHEET NOTES

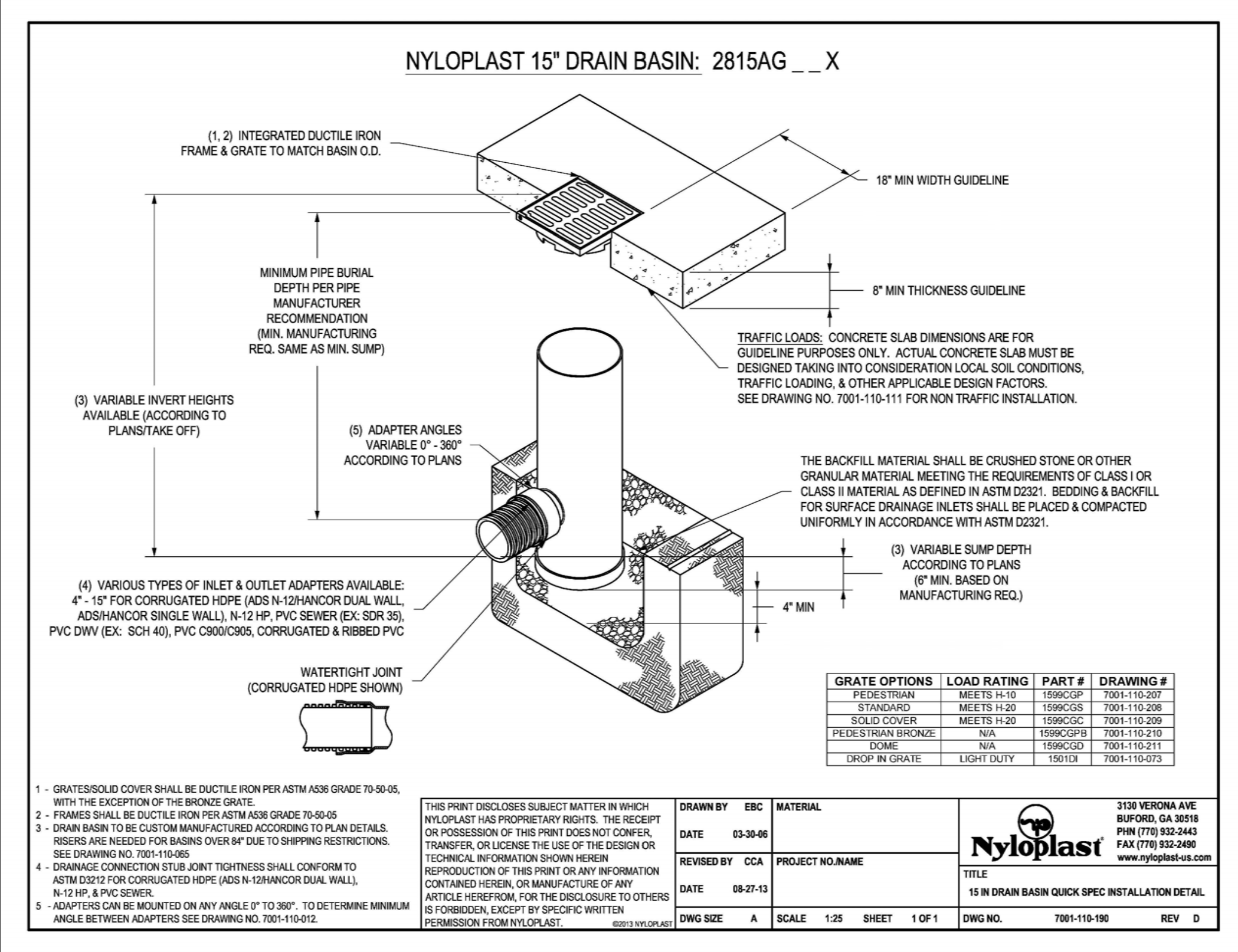
- A. EASEMENT AND PROPERTY LINES NOT SHOWN ON THIS PLAN FOR CLARITY. SEE OVERALL SITE PLAN, SHEET AS102.
- B. THERE ARE NO STRUCTURES WITHIN 20' OF SITE.

GENERAL SHEET NOTES; CONT.

- C. GROUND-MOUNTED EQUIPMENT SCREENING WILL BE DESIGNED TO ALLOW FOR ACCESS TO UTILITY FACILITIES. ALL SCREENING AND VEGETATION SURROUNDING GROUND-MOUNTED TRANSFORMERS AND UTILITY PADS ARE TO ALLOW 10 FEET OF CLEARANCE IN FRONT OF THE EQUIPMENT DOOR AND 5-6 FEET OF CLEARANCE ON THE REMAINING THREE SIDES FOR SAFE OPERATION, MAINTENANCE AND REPAIR PURPOSES.
- D. APPLY ANTI-GRAFFITI TREATMENT AT ALL EXTERIOR SITE ELEMENTS TO A HEIGHT OF 8'-0" AFF. THIS INCLUDES AT ALL GABION WALLS, MONUMENT SIGNAGE, LIGHT POLES, AND THE SHADE STRUCTURE. SEE SPECIFICATIONS.
- E. ADA ACCESS ASILES SHALL HAVE THE WORDS "NO PARKING" IN CAPITAL LETTERS, EACH OF WHICH SHALL BE AT LEAST ONE FOOT HIGH AND AT LEAST TWO INCHES WIDE, PAINTED AT THE REAR OF THE PARKING SPACE SO AS TO BE CLOSE TO WHERE AN ADJACENT VEHICLE'S REAR TIRE WOULD BE PLACED; SEE PLAN.

SHEET KEYNOTES

- EXISTING FIRE HYDRANT TO REMAIN.
- EXISTING GRAY BLOCK SITE WALL, 6'-0" TALL, TO REMAIN.
- EXISTING BRONZE PAINTED STEEL FENCE, APPROXIMATELY 5'-0" TALL, TO REMAIN AT NEIGHBORING PROPERTY.
- EXISTING SITE FURNITURE TO REMAIN.
- EXISTING CURB CUT TO REMAIN AND TO SERVE NEW PARKING LOT FOR VEHICULAR INGRESS & EGRESS TO SITE.
- EXISTING SIDEWALK TO REMAIN.
- EXISTING SITE LIGHT TO REMAIN. THE EXISTING SITE LIGHTING LOCATED IN THE PARK AREA ARE MOUNTED TO WOOD POLES APPROXIMATELY 20'-0" TALL. THE EXISTING SITE LIGHTING LOCATED IN THE PARKING LOT ARE MOUNTED ON A 3'-0" HIGH CONCRETE BASE WITH A 20'-0" STEEL POLE & DOUBLE LIGHT FIXTURES.
- NEW SINGING ARROW COMMUNITY CENTER BUILDING.
- LINE OF BUILDING FOOTPRINT AT GROUND LEVEL.
- NEW CORTEN STEEL SHADE STRUCTURE. STRUCTURE TO BE 12'-2" AFF TO TOP.
- NEW ASPHALT SURFACE AND STRIPING AT PARKING LOT, TYP., SEE DETAIL D4/AS502.
- NEW HOT BOX WITH 2" & 6" RPPBS. SEE UTILITY PLAN, SHEET C102.
- NEW 2" WATER METER. SEE UTILITY PLAN, SHEET C102.
- NEW FDC. SEE UTILITY PLAN, SHEET C102.
- NEW GAS METER. SEE UTILITY PLAN, SHEET C102.
- NEW ROOF-TOP MECHANICAL UNITS. TYPICAL DIMENSIONS ARE 4'-5" X 7'-5" X 3'-6" TALL.
- NEW TRANSFORMER AND CONCRETE PAD, COORDINATED WITH PNM. SEE UTILITY PLAN, SHEET C102.
- EXISTING CITY BUS STOP TO REMAIN.
- NEW SITE LIGHTING, TO BE 15' AFF. STEEL POLE, W/ DARK BRONZE FINISH. TYP. FIXTURE TYPE TO BE LINEA 450 LVC. SEE OUT SHEET. SEE ALSO DETAIL A1/AS501.
- NEW FIRE HYDRANT AND PIV. SEE UTILITY PLAN, SHEET C102.
- NEW KNOX BOX TO BE MOUNTED ON NEW BUILDING AT 6'-0" AFF.
- NEW GABION BENCH, 18" HIGH X 2'-0" DEEP. LENGTH VARIES DEPENDING ON LOCATION. SEE SITE PLAN. SEE DETAILS C4/AS501 & D4/AS501.
- RED FIRE LANE CURB PAINT & LABELING MARKED ON BOTH SIDES OF ROAD AT ALL CURBS. CONTINUOUS. SEE DETAIL E4/AS502.
- NEW 120" HAMMERHEAD TURN-AROUND PER ITS APPENDIX D.
- NEW FIRE TRUCK ACCESS TO SITE; HEAVY DUTY ENGINEERED DRIVING SURFACE AS REQUIRED TO SUPPORT 75,000 LBS; GRADE NOT TO EXCEED FOR THIS CONCRETE AREA DOUBLES AS ADA PEDESTRIAN ACCESS TO BUILDING. SEE CITY STANDARD DETAIL 2405A FOR ROAD PAVEMENT SECTION.
- NEW SITE IDENTIFICATION SIGN. SEE DETAIL E1/AS501.
- 4 NEW BICYCLE RACKS. SEE DETAIL A4/AS501.
- NEW GATED REFUSE ENCLOSURE. SEE ENLARGED PLAN B2/AS501 AND ELEVATION A2/AS501.
- 3'-0" TALL RETRACTABLE BOLLARDS, TO BE POLISHED STAINLESS STEEL, GRADE 316, PER COA STANDARDS. SEE DETAIL D3/AS501.
- 2 MOTORCYCLE PARKING SPACES.
- NEW PLANTING AREA.
- EXISTING ASPHALT PEDESTRIAN PATH OPEN AND UNIMPEDED BY ANY WALLS, TO REMAIN.
- NEW ADA PEDESTRIAN PATH, CONNECTING BUILDING TO EXISTING PEDESTRIAN PATH NETWORK AND TO NEARBY ROADS. SEE DTLS AS501 & AS502.
- EXISTING STOP SIGN TO REMAIN.
- ACCESSIBLE PEDESTRIAN CONNECTION TO EXISTING PEDESTRIAN TRAIL.
- CROSSWALK MARKED ON ASPHALT TO PROVIDE PEDESTRIAN ACCESS FROM WEST SIDE OF PARKING LOT TO EXISTING PEDESTRIAN TRAIL ALONG EAST EDGE OF SITE.
- CONCRETE SIDEWALK IN THIS AREA. COORDINATE LOCATION TO BE OUTSIDE OF FIRE RISER.
- NEW CONCRETE PEDESTRIAN PATH. PATH TO BE 5'-0" WIDE. ALL TREES AND EXISTING UTILITIES TO BE PROTECTED. SEE DTLS AS501 & AS502. SEE CITY STANDARD DETAIL 2430J.
- NEW BOLLARD, SEE DETAIL C1/AS502.
- PROVIDE NEW INTEGRALLY LIGHTED FLAGPOLE. COORDINATE WITH ELECTRICAL DRAWING ES101. FLAGPOLE WAREHOUSE INTERNAL HEAVY DUTY FLAGPOLE OR EQUAL) COORDINATE WITH MANUFACTURER FOR INSTALLATION. SEE DETAIL D1/AS502.
- EXISTING PLANTER AND CONCRETE NEW CURB TO REMAIN. SEE L101.
- TYPICAL CURB CUT, SEE DETAIL C5/AS501.
- NEW MOW CURB TO MATCH EXISTING. SEE COA STD. DWG. 2726.
- ADA ACCESSIBLE PARKING SIGN. SEE DETAILS C2 AND D3/AS502.
- VAN ACCESSIBLE ADA PARKING SIGN. SEE DETAILS C2 AND D3/AS502.
- MOTORCYCLE PARKING SIGN.
- NEW HEADER CURB AT NORTH AND WEST SIDES OF FIRE LANE. SEE C-101. SEE CITY STANDARD DRAWING 2415B FOR HEADER CURB.
- NEW CLEAN-OUT. SEE SHEET PL102.



15 IN DRAIN BASIN QUICK SPEC INSTALLATION DETAIL

DETAIL REFERENCES AREA DRAINS SHOWN ON C-100, GRADING & DRAINAGE PLAN

SCALE: N.T.S.

- AT GREEN LINE, PROVIDE TURNDOWN EDGE ONLY PER DETAIL B5/AS501
- AT BLUE LINES, PROVIDE TURNDOWN EDGE PLUS CURB PER DETAIL B5/AS502
- AT ORANGE LINE, PROVIDE MONOLITHIC HEADER CURB PER DETAIL C5/AS502; GRADUALLY STEP DOWN TO NORMAL HEADER CURB HEIGHT.

REMOVE TWO EXISTING TREES TO COMPLETE GRADING

AREA DRAIN, PER CIVIL

LIMITS OF CONSTRUCTION PER 2016 ARCHAEOLOGICAL SURVEY

REMOVE GABION BENCHES FROM INDICATED AREAS (50 LF OF GABION BENCHES REMOVED). RELOCATE GABION BENCHES AT SOUTH AND WEST SIDES OF CONCRETE (50 LF OF GABION BENCHES RELOCATED)

WENONAH AVENUE SE

RACHEL ROAD SE

SINGING ARROW COMMUNITY CENTER ENLARGED SITE PLAN

SCALE: 1" = 30'-0"

cherry/see/reames architects, PC
226 8th Avenue SE Albuquerque, NM 87102
505-842-1278 Fax 505-766-9289
www.cherryseeam.com

AS-BUILT INFORMATION	
CONTRACTOR	DATE:
WORK STAKED BY	DATE:
INSPECTOR'S APPROVAL	DATE:
FIELD VERIFICATION BY	DATE:
DRAWING CORRECTED BY	DATE:
MICRO-FILM INFORMATION	DATE:
RECORDED BY	NO.

SURVEY INFORMATION	
FIELD NOTES	DATE
NO.	BY

REVISIONS/REMARKS	
NO.	DATE
BY	

PARKING CALCULATIONS	
OFF-STREET PARKING PER IDO 14-16-5:	
- PER TABLE 5-5-1; FOR A COMMUNITY CENTER OR LIBRARY, 2 SPACES REQUIRED/1000 CSA	
14,716 CSA/1000 CSA = 15	
2 X 15 = 30 SPACES PROVIDED	
- 67 REGULAR SPACES REQUIRED	
- 3 ADA ACCESSIBLE SPACES PROVIDED (INCL. 2 VAN ACCESSIBLE)	
= 70 TOTAL SPACES PROVIDED	

ACCESSIBLE PARKING PER SECTION 5-5(C)(7):	
- ACCESSIBLE PARKING MUST BE PROVIDED AS PART OF THE ABOVE MINIMUM REQUIRED SPACES. NUMBER OF ACCESSIBLE SPACES AS REQUIRED BY THE AMERICANS WITH DISABILITIES ACT ACCESSIBILITY GUIDELINES & NM STATUTES ANNOTATED.	
- ADA GUIDELINES = TOTAL # OF PARKING SPACES PROVIDED BETWEEN 51 AND 75 REQUIRES 3 ACCESSIBLE SPACES.	
- 3 ACCESSIBLE SPACES PROVIDED	
MOTORCYCLE PARKING PER TABLE 5-5-4:	
- TOTAL PARKING SPACES REQUIRED PER TABLE 5-5-1 BETWEEN 26-50 REQUIRES 2 MOTORCYCLE SPACES	
- 2 MOTORCYCLE SPACES PROVIDED	
BICYCLE PARKING PER TABLE 5-5-5:	
- FOR NON-RESIDENTIAL USES, 3 SPACES OR 10% OF REQUIRED OFF-STREET PARKING SPACES, WHICHEVER IS GREATER, IS REQUIRED.	
- 30 SPACES REQUIRED X 10% = 3 BICYCLE SPACES REQUIRED	
- 28 BICYCLE SPACES PROVIDED	
ON-STREET PARKING:	
- NONE REQUIRED; NONE PROVIDED	

CITY OF ALBUQUERQUE / FAMILY & COMMUNITY SERVICES SINGING ARROW COMMUNITY CENTER	
TITLE: ENLARGED SITE PLAN	
Design Review Committee	City Engineer Approval
100% DD	2/15/2019
50% CD	4/15/2019
95% CD	7/15/2019
100% CD	9/3/2019
City Project No. 5441.95	Zone Map No. L-22-Z
Sheet AS102	Of 95