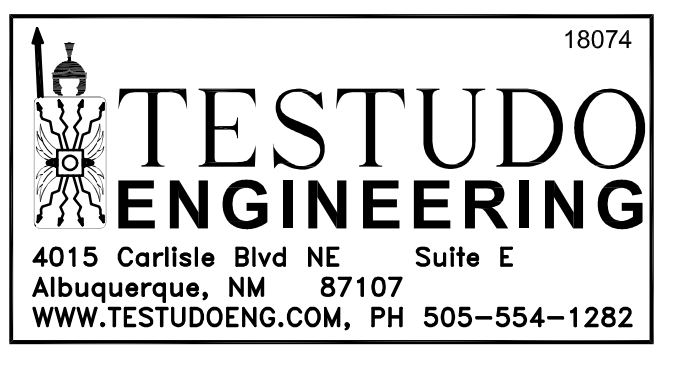


NEW MULTI-PURPOSE BUILDING
 for ST TERESA CATHOLIC SCHOOL

MECHANICAL DETAILS

date:	August 15, 2019
drawn by:	M. OLIVARES
checked by:	D. GRAHAM
file name:	18074_M501
revisions:	



M-501

GENERAL UTILITY NOTES

- A. CONTRACTOR NOTE: THESE DRAWINGS REFLECT INFORMATION ON UTILITIES GATHERED BY SITE SURVEY PROVIDED ARCHITECT, SITE INSPECTION, PREVIOUS EXISTING CONSTRUCTION DRAWINGS/RECORDS, AND DISCUSSIONS MUNICIPAL OFFICIALS. IT IS POSSIBLE THAT THE EXACT LOCATION OF BURIED LINES IN THE IMMEDIATE VICINITY OF THE PROPOSED BUILDING MAY BE SOMEWHAT DIFFERENT FROM THE LOCATION SHOWN ON THIS DRAWING. IF ADDITIONAL LINES ARE ENCOUNTERED, THEY SHALL BE EXPOSED AND IDENTIFIED BY THIS CONTRACTOR. WHERE ADDITIONAL LINES AND/OR DIFFERING LOCATIONS ARE ENCOUNTERED, THIS CONTRACTOR SHALL REQUEST THAT THE ARCHITECT ISSUE A RULING AS TO ANY NECESSARY CHANGE OF MATERIALS, RE-ROUTING, ABANDONING OR RELOCATING OF SUCH LINES.
- B. THE LOCAL GAS COMPANY SHALL BE THE SOLE AUTHORITY IN RULING ON THE DISPOSITION OF NATURAL GAS PIPING. ALL LINES ENCOUNTERED THAT INTERFERE WITH CONSTRUCTION SHALL BE RELOCATED (IF ACTIVE) AND SHALL BE REMOVED (IF INACTIVE) BY THIS CONTRACTOR UNDER THIS CONTRACT. ALL BIDDERS ARE CAUTIONED TO THOROUGHLY INVESTIGATE EXACT SITE CONDITIONS BEFORE SUBMITTING THEIR BIDS. ALL EXISTING LINES REQUIRING MINIMUM EARTH COVERAGE, AS REQUIRED BY STATE AND LOCAL CODES, OR AS NOTED DUE TO NEW FINISH GRADES, SHALL BE ADJUSTED AS REQUIRED TO HAVE MINIMUM COVERAGE REQUIREMENTS.
- C. ANY WORK OR INSTALLATION NOT ACCEPTED BY THE ARCHITECT OR MECHANICAL ENGINEER DUE TO IMPROPER WORKMANSHIP OR LACK OF PROPER COORDINATION SHALL BE REMOVED AND CORRECTLY INSTALLED AT THE MECHANICAL CONTRACTOR'S EXPENSE, AS DIRECTED.
- D. MINIMUM DEPTH BELOW GRADE (COVER): GAS 18"

GENERAL UTILITY NOTES (CONT'D)

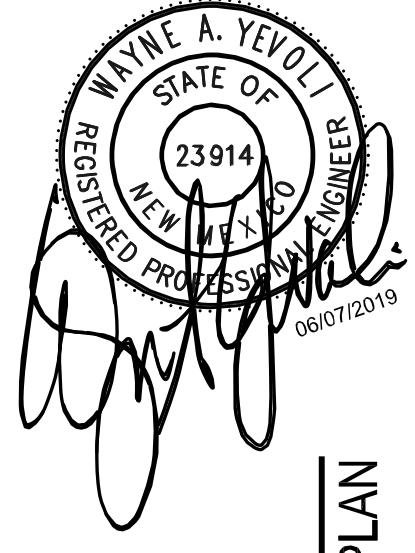
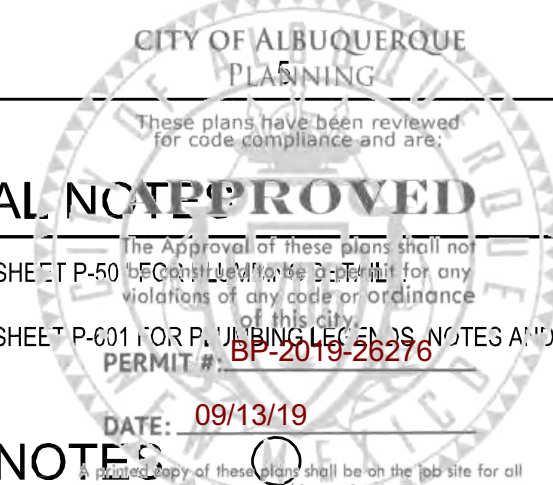
- E. SPECIFIC: THE CONTRACTOR SHALL BEAR ALL COSTS AND BE TOTALLY RESPONSIBLE FOR ALL OF THE UTILITY SERVICES AND THEIR COMPLETE INSTALLATION, AS SHOWN ON THE CONTRACT DRAWINGS, AND/OR DETAILS AND SPECIFICATIONS.
- F. THIS CONTRACTOR IS TOTALLY RESPONSIBLE FOR CONTACTING PUBLIC UTILITY COMPANIES, MUNICIPALITIES, AND/OR OTHERS HAVING JURISDICTION ON UTILITY SERVICES (PRIOR TO SUBMITTING HIS BID) FOR ALL CURRENT INFORMATION ON FEE CHARGES AND ALL OTHER COST EXPENSES REQUIRED IN PROVIDING COMPLETE AND FULLY OPERATING UTILITY SERVICES TO THIS PROJECT. HE SHALL INCLUDE SUCH COSTS IN HIS BID. NO ADDITIONAL COSTS TO THE PROJECT WILL BE ALLOWED FOR CONTRACTOR'S NEGLIGENCE IN ATTAINING ALL SUBJECT COSTS REQUIRED IN PROVIDING A COMPLETE INSTALLATION AND COMPLETE OPERATING UTILITY SERVICES FOR THIS PROJECT.
- G. REFER TO ARCHITECTURAL PLANS FOR COORDINATION WITH FINAL FINISHED AND EXISTING GRADES, AND OTHER SITE IMPROVEMENTS. ALSO REFER TO CIVIL, LANDSCAPING, AND ELECTRICAL DRAWINGS, AND OTHER DRAWINGS INCLUDED IN THIS SET OF CONTRACT DOCUMENTS.
- H. CONTRACTOR SHALL EXPOSE AND VERIFY INVERT ELEVATIONS OF RELEVANT SEWER LINES AND MANHOLES BEFORE SETTING ANY NEW INVERTS (EITHER INSIDE BUILDING AREA OR ON SITE). SHOULD INVERTS DIFFER GREATLY FROM THOSE SHOWN ON THESE DRAWINGS, THE ARCHITECT SHALL BE NOTIFIED AND A DECISION MADE AS TO ANY CHANGE IN MANHOLE INVERTS, CHANGES IN ROUTING AND/OR CHANGE IN ON-SITE SEWER LINE SLOPES AND INVERTS.

GENERAL UTILITY NOTES (CONT'D)

- I. ALL MATERIALS (VALVES, MANHOLES, FIRE HYDRANTS, UTILITY LINES, ETC.), REMOVED FROM THE SITE ARE TO BE TURNED OVER TO THE OWNER'S MAINTENANCE PERSONNEL, OR DISPOSED OF AS DIRECTED BY OWNER OR HIS REPRESENTATIVE.
- J. CAUTION NOTES: THE CONTRACTOR SHALL HAND EXCAVATE FOR INSTALLATION OF ALL NEW UTILITIES CROSSING EXISTING ELECTRICAL (SEE ELECTRICAL DRAWINGS) AND GAS BURIED UTILITIES. HAND EXCAVATION SHALL BE PERFORMED SIX (6) FEET BEYOND THESE UTILITIES IN EACH DIRECTION. TYPICAL. IT SHALL BE THE CONTRACTOR'S RESPONSIBILITY TO PROVIDE ADEQUATE SUPPORT AND PROTECTION FOR EXISTING UTILITIES BEING CROSSED BY NEW UTILITIES AND UNDERMINED BY THE REQUIRED EXCAVATION.
- K. THIS CONTRACTOR SHALL INSTALL PROPER (OSHA) BARRICADES IN PEDESTRIAN AND VEHICULAR TRAFFIC AREAS AS NEEDED TO INSURE SAFETY AND THAT ALL FEDERAL, STATE AND LOCAL STANDARDS ARE COMPLIED WITH.
- L. CONTRACTOR SHALL MAKE EVERY EFFORT TO PROMPTLY COVER ALL PIPE TRENCHES AND OTHER EXCAVATION SITES TO MINIMIZE ANY POTENTIAL HAZARDS.

GENERAL NOTES

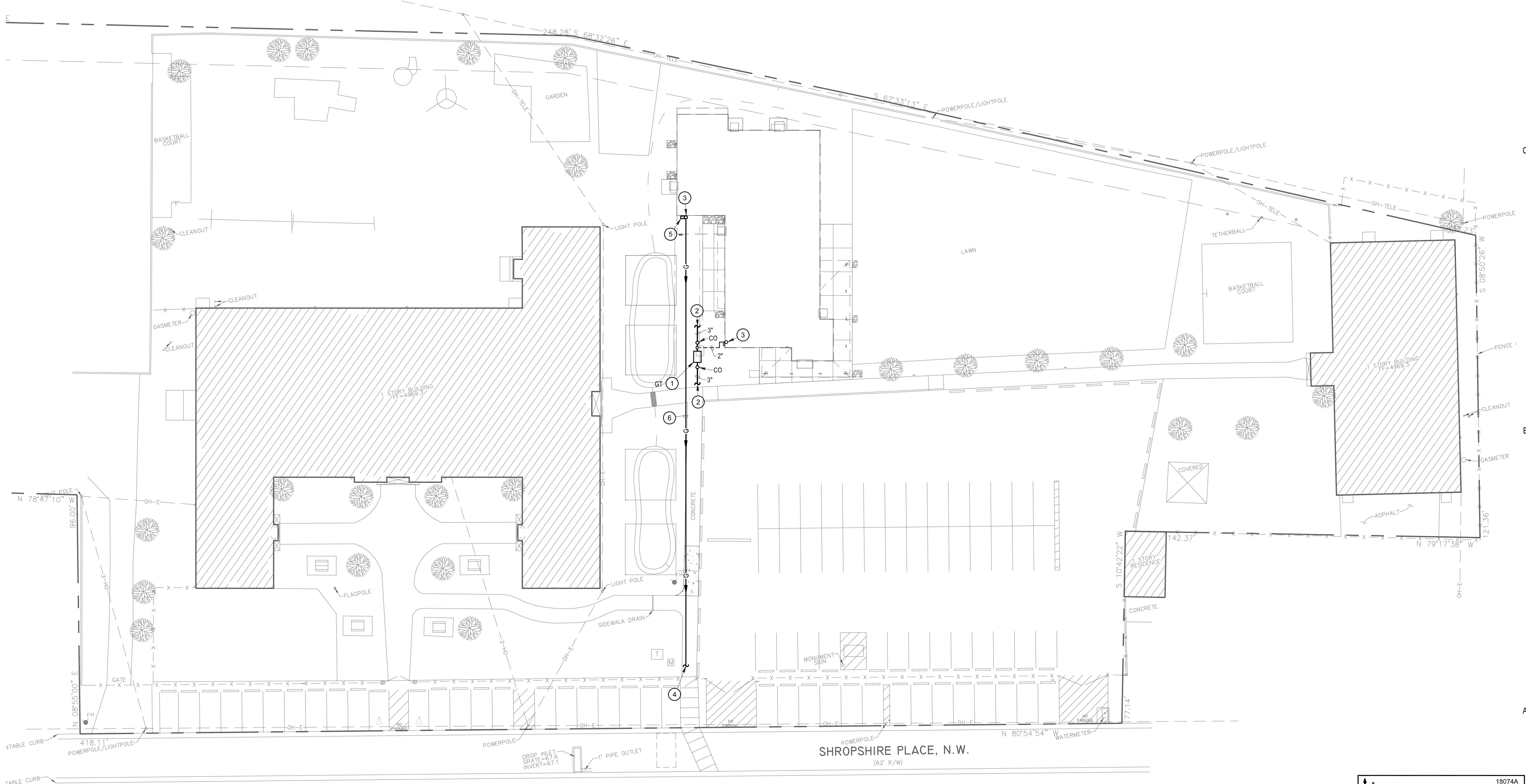
- A. REFER TO SHEET P-50 FOR GENERAL NOTES AND SCHEDULES.
 - B. REFER TO SHEET P-601 FOR PLUMBING NOTES AND SCHEDULES.
- DATE: 09/13/19
- KEYED NOTES
- 1. COORDINATE EXACT LOCATION OF GREASE TRAP WITH CIVIL PLANS.
 - 2. REFER TO CIVIL PLANS FOR EXACT ROUTING OF GREASE DRAIN PIPING.
 - 3. SEE SHEET P-101 FOR CONTINUATION.
 - 4. CONNECT NEW GAS YARD LINE TO EXISTING GAS LINE IN STREET. CONTRACTOR SHALL COORDINATE WORK INSTALLATION WITH LOCAL GAS AUTHORITY.
 - 5. NEW GAS METER AND REGULATOR. REFER TO SHEET P-101 FOR MORE INFORMATION.
 - 6. NEW GAS YARD LINE SHALL BE COORDINATE INSTALLATION WITH LOCAL GAS COMPANY AND NEW EXISTING UTILITIES AND CONDITIONS.



NEW MULTI-PURPOSE BUILDING
for ST TERESA CATHOLIC SCHOOL

PLUMBING SITE PLAN

date:	June 07, 2019
drawn by:	T. DURAN
checked by:	D. GRAHAM
file name:	18074A_PS101
revisions:	



A3 PLUMBING SITE PLAN
SCALE: 1" = 20'-0"



18074A

TESTUDO ENGINEERING

4015 Carlisle Blvd NE Suite E
Albuquerque, NM 871107
WWW.TESTUDOENG.COM, PH 505-554-1282

PS-101a
ALTERNATE

GENERAL UTILITY NOTES

- A. CONTRACTOR NOTE: THESE DRAWINGS REFLECT INFORMATION ON UTILITIES GATHERED BY SITE SURVEY PROVIDED ARCHITECT, SITE INSPECTION, PREVIOUS EXISTING CONSTRUCTION DRAWINGS/RECORDS, AND DISCUSSIONS MUNICIPAL OFFICIALS. IT IS POSSIBLE THAT THE EXACT LOCATION OF BURIED LINES IN THE IMMEDIATE VICINITY OF THE PROPOSED BUILDING MAY BE SOMEWHAT DIFFERENT FROM THE LOCATION SHOWN ON THIS DRAWING. IF ADDITIONAL LINES ARE ENCOUNTERED, THEY SHALL BE EXPOSED AND IDENTIFIED BY THIS CONTRACTOR. WHERE ADDITIONAL LINES AND/OR DIFFERING LOCATIONS ARE ENCOUNTERED, THIS CONTRACTOR SHALL REQUEST THAT THE ARCHITECT ISSUE A RULING AS TO ANY NECESSARY CHANGE OF MATERIALS, RE-ROUTING, ABANDONING OR RELOCATING OF SUCH LINES.
- B. THE LOCAL GAS COMPANY SHALL BE THE SOLE AUTHORITY IN RULING ON THE DISPOSITION OF NATURAL GAS PIPING. ALL LINES ENCOUNTERED THAT INTERFERE WITH CONSTRUCTION SHALL BE RELOCATED (IF ACTIVE) AND SHALL BE REMOVED (IF INACTIVE) BY THIS CONTRACTOR UNDER THIS CONTRACT. ALL BIDDERS ARE CAUTIONED TO THOROUGHLY INVESTIGATE EXACT SITE CONDITIONS BEFORE SUBMITTING THEIR BIDS. ALL EXISTING LINES REQUIRING MINIMUM EARTH COVERAGE, AS REQUIRED BY STATE AND LOCAL CODES, OR AS NOTED DUE TO NEW FINISH GRADES, SHALL BE ADJUSTED AS REQUIRED TO HAVE MINIMUM COVERAGE REQUIREMENTS.
- C. ANY WORK OR INSTALLATION NOT ACCEPTED BY THE ARCHITECT OR MECHANICAL ENGINEER DUE TO IMPROPER WORKMANSHIP OR LACK OF PROPER COORDINATION SHALL BE REMOVED AND CORRECTLY INSTALLED AT THE MECHANICAL CONTRACTOR'S EXPENSE, AS DIRECTED.
- D. MINIMUM DEPTH BELOW GRADE (COVER): GAS 18"

GENERAL UTILITY NOTES (CONT'D)

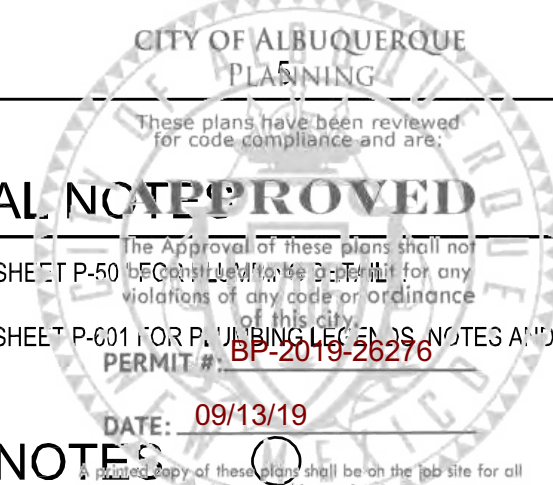
- E. SPECIFIC: THE CONTRACTOR SHALL BEAR ALL COSTS AND BE TOTALLY RESPONSIBLE FOR ALL OF THE UTILITY SERVICES AND THEIR COMPLETE INSTALLATION, AS SHOWN ON THE CONTRACT DRAWINGS, AND/OR DETAILS AND SPECIFICATIONS.
- F. THIS CONTRACTOR IS TOTALLY RESPONSIBLE FOR CONTACTING PUBLIC UTILITY COMPANIES, MUNICIPALITIES, AND/OR OTHERS HAVING JURISDICTION ON UTILITY SERVICES (PRIOR TO SUBMITTING HIS BID) FOR ALL CURRENT INFORMATION ON FEE CHARGES AND ALL OTHER COST EXPENSES REQUIRED IN PROVIDING COMPLETE AND FULLY OPERATING UTILITY SERVICES TO THIS PROJECT. HE SHALL INCLUDE SUCH COSTS IN HIS BID. NO ADDITIONAL COSTS TO THE PROJECT WILL BE ALLOWED FOR CONTRACTOR'S NEGLIGENCE IN ATTAINING ALL SUBJECT COSTS REQUIRED IN PROVIDING A COMPLETE INSTALLATION AND COMPLETE OPERATING UTILITY SERVICES FOR THIS PROJECT.
- G. REFER TO ARCHITECTURAL PLANS FOR COORDINATION WITH FINAL FINISHED AND EXISTING GRADES, AND OTHER SITE IMPROVEMENTS. ALSO REFER TO CIVIL, LANDSCAPING, AND ELECTRICAL DRAWINGS, AND OTHER DRAWINGS INCLUDED IN THIS SET OF CONTRACT DOCUMENTS.
- H. CONTRACTOR SHALL EXPOSE AND VERIFY INVERT ELEVATIONS OF RELEVANT SEWER LINES AND MANHOLES BEFORE SETTING ANY NEW INVERTS (EITHER INSIDE BUILDING AREA OR ON SITE). SHOULD INVERTS DIFFER GREATLY FROM THOSE SHOWN ON THESE DRAWINGS, THE ARCHITECT SHALL BE NOTIFIED AND A DECISION MADE AS TO ANY CHANGE IN MANHOLE INVERTS, CHANGES IN ROUTING AND/OR CHANGE IN ON-SITE SEWER LINE SLOPES AND INVERTS.

GENERAL UTILITY NOTES (CONT'D)

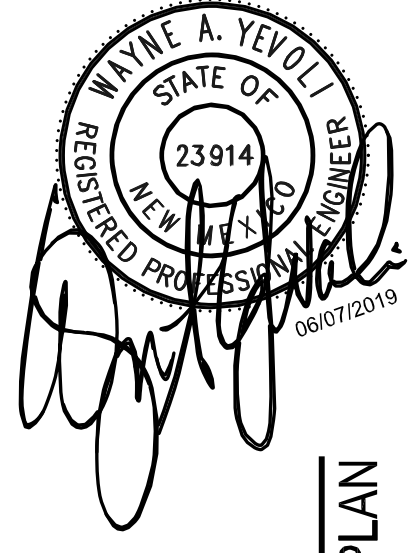
- I. ALL MATERIALS (VALVES, MANHOLES, FIRE HYDRANTS, UTILITY LINES, ETC.), REMOVED FROM THE SITE ARE TO BE TURNED OVER TO THE OWNER'S MAINTENANCE PERSONNEL, OR DISPOSED OF AS DIRECTED BY OWNER OR HIS REPRESENTATIVE.
- J. CAUTION NOTES: THE CONTRACTOR SHALL HAND EXCAVATE FOR INSTALLATION OF ALL NEW UTILITIES CROSSING EXISTING ELECTRICAL (SEE ELECTRICAL DRAWINGS) AND GAS BURIED UTILITIES. HAND EXCAVATION SHALL BE PERFORMED SIX (6) FEET BEYOND THESE UTILITIES IN EACH DIRECTION. TYPICAL. IT SHALL BE THE CONTRACTOR'S RESPONSIBILITY TO PROVIDE ADEQUATE SUPPORT AND PROTECTION FOR EXISTING UTILITIES BEING CROSSED BY NEW UTILITIES AND UNDERMINED BY THE REQUIRED EXCAVATION.
- K. THIS CONTRACTOR SHALL INSTALL PROPER (OSHA) BARRICADES IN PEDESTRIAN AND VEHICULAR TRAFFIC AREAS AS NEEDED TO INSURE SAFETY AND THAT ALL FEDERAL, STATE AND LOCAL STANDARDS ARE COMPLIED WITH.
- L. CONTRACTOR SHALL MAKE EVERY EFFORT TO PROMPTLY COVER ALL PIPE TRENCHES AND OTHER EXCAVATION SITES TO MINIMIZE ANY POTENTIAL HAZARDS.

GENERAL NOTES

- A. REFER TO SHEET P-50 FOR GENERAL NOTES AND SCHEDULES.
 - B. REFER TO SHEET P-601 FOR PLUMBING NOTES AND SCHEDULES.
- DATE: 09/13/19
- ### KEYED NOTES
- 1. COORDINATE EXACT LOCATION OF GREASE TRAP WITH CIVIL PLANS.
 - 2. REFER TO CIVIL PLANS FOR EXACT ROUTING OF GREASE DRAIN PIPING.
 - 3. SEE SHEET P-101 FOR CONTINUATION.
 - 4. CONNECT NEW GAS YARD LINE TO EXISTING GAS LINE IN STREET. CONTRACTOR SHALL COORDINATE WORK INSTALLATION WITH LOCAL GAS AUTHORITY.
 - 5. NEW GAS METER AND REGULATOR. REFER TO SHEET P-101 FOR MORE INFORMATION.
 - 6. NEW GAS YARD LINE SHALL BE COORDINATE INSTALLATION WITH LOCAL GAS COMPANY AND NEWEXISTING UTILITIES AND CONDITIONS.



VIGIL & ASSOCIATES
 ARCHITECTURAL GROUP, P.C.
 4477 Irving NW, Suite A
 Albuquerque, NM 87105
 Ph: 505.850.5030 - Fax: 505.850.5031
 www.va-architects.com



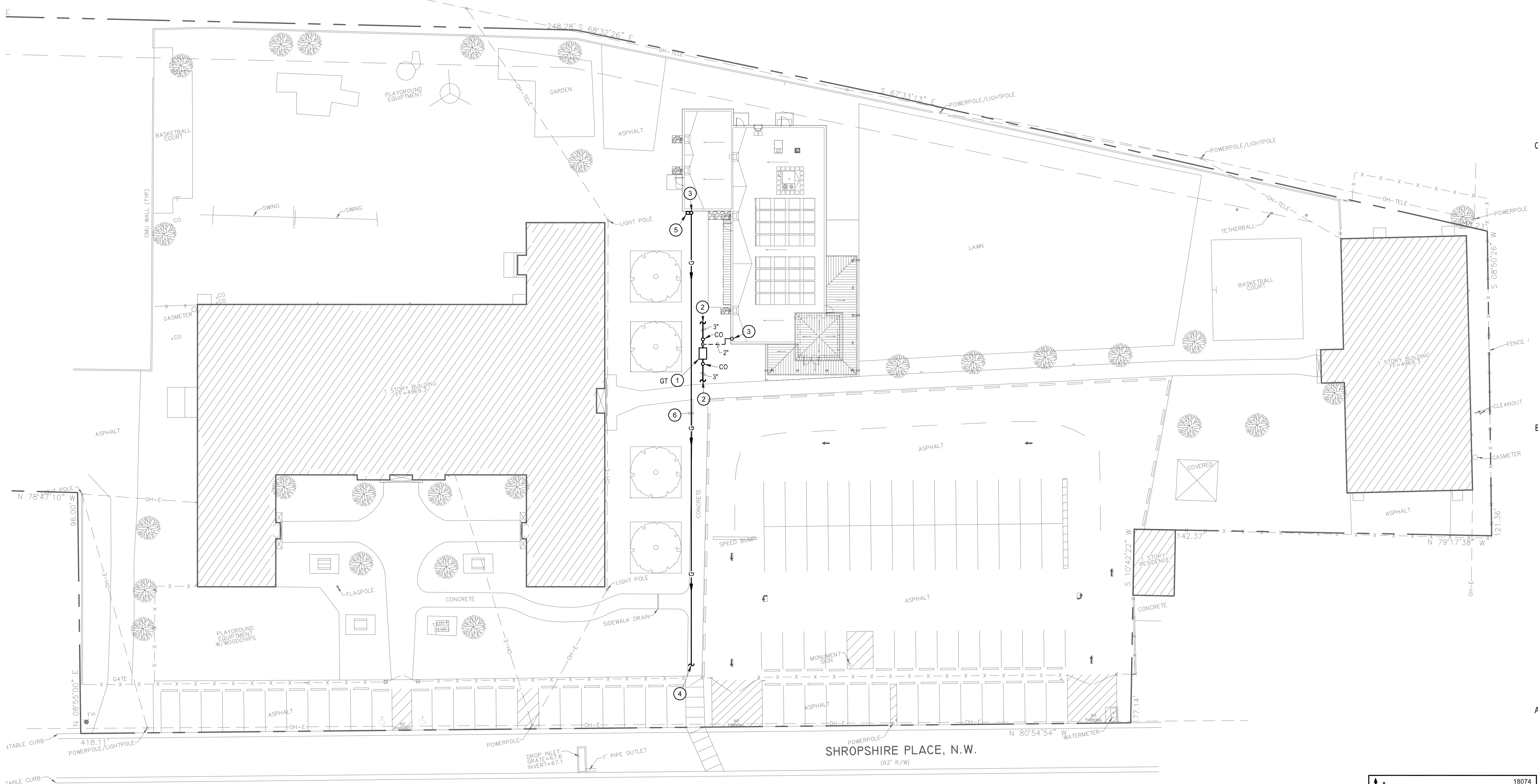
NEW MULTI-PURPOSE BUILDING

for ST TERESA CATHOLIC SCHOOL

PLUMBING SITE PLAN

date:	June 07, 2019
drawn by:	T. DURAN
checked by:	D. GRAHAM
file name:	18074_PS101
revisions:	

PS-101



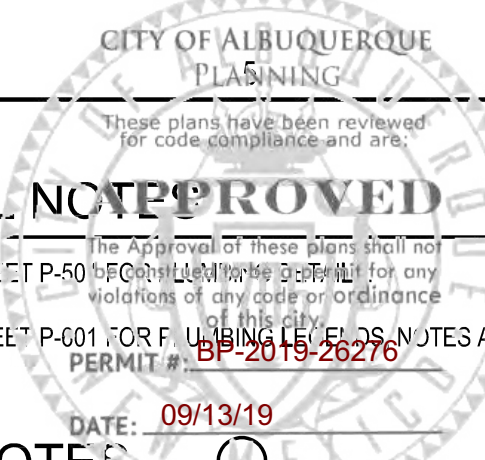
A3 PLUMBING SITE PLAN
 SCALE: 1" = 20'-0"



18074

TESTUDO ENGINEERING

4015 Carlisle Blvd NE Suite E
 Albuquerque, NM 87107
 WWW.TESTUDOENG.COM, PH 505-554-1282



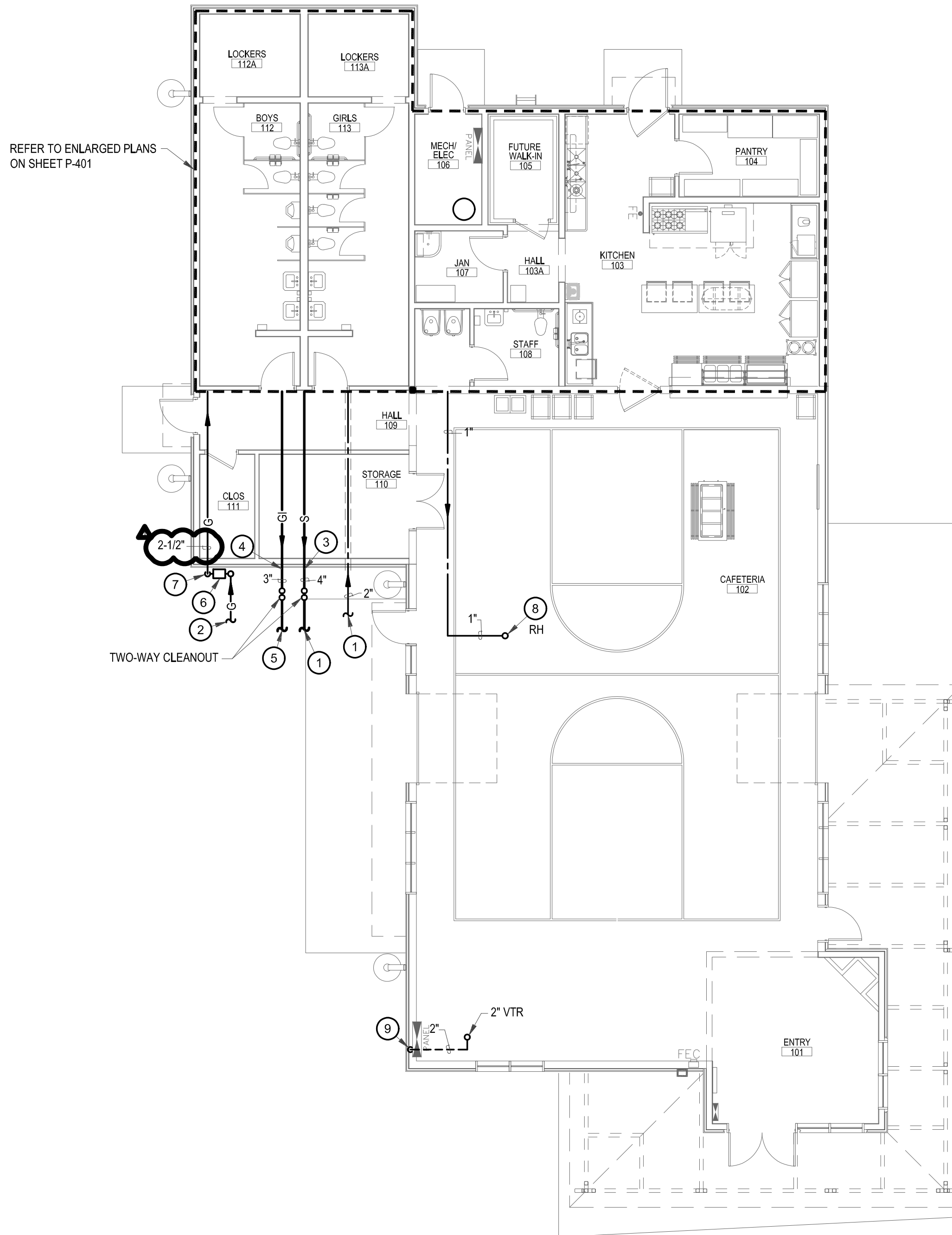
GENERAL NOTES

- A REFER TO SHEET P-501 FOR PLUMBING SYMBOLS FOR ANY VIOLATIONS OF CITY CODE OR ORDINANCE.
- B REFER TO SHEET P-001 FOR PLUMBING LEVELS, NOTES AND SCHEDULES.

DATE: 09/13/19

KEYED NOTES

- 1 REFER TO CIVIL PLANS FOR CONTINUATION.
- 2 REFER TO SHEET PS-101 FOR CONTINUATION.
- 3 INVERT ELEVATION = 33" +/- BELOW FINISHED FLOOR.
- 4 INVERT ELEVATION = 32.5" +/- BELOW FINISHED FLOOR.
- 5 EXTEND 3" GREASE SEWER (G) TO GREASE INTERCEPTOR. REFER TO CIVIL PLANS FOR CONTINUATION AND LOCATION OF GREASE INTERCEPTOR.
- 6 NEW GAS METER AND REGULATOR ASSEMBLY INSTALLED BY LOCAL GAS AUTHORITY. GAS METER AND REGULATOR TO BE SET FOR A TOTAL LOAD OF 1124 CFH. REGULATOR TO REDUCE PRESSURE DOWN TO 7" W.C. CONTRACTOR SHALL COORDINATE LOCATION, SIZE AND INSTALLATION AND SHALL PAY FOR ALL COST ASSOCIATED WITH YARD LINE, GAS REGULATOR AND METER, ETC. FOR A COMPLETE SYSTEM.
- 7 PROVIDE FULL BORE GAS SHUTOFF VALVE DOWNSTREAM OF GAS METER FOR ISOLATION AND SAFETY, PER LOCAL CODE. EXTEND AND ROUTE 2-1/2" GAS LINE UP ALONG WALL TO ROOF TOP AND ROUTE AS SHOWN.
- 8 1" CW UP TO ROOF HYDRANT. COORDINATE EXACT LOCATION WITH ARCHITECT AND SOLAR PANELS.
- 9 2" VENT FROM BELOW FLOOR UP IN WALL TO CEILING SPACE AND ROUTE AS SHOWN. REFER TO SHEET PS-101 FOR CONTINUATION.



REFER TO ENLARGED PLANS ON SHEET P-401

B3 PLUMBING PLAN
SCALE: 1/8" = 1'-0"

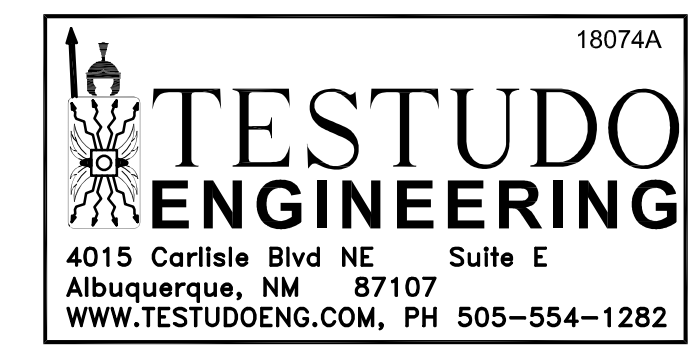


NEW MULTI-PURPOSE BUILDING
for ST TERESA CATHOLIC SCHOOL

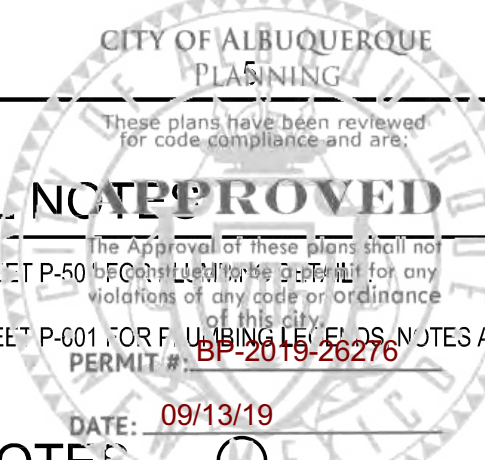
PLUMBING PLAN

project no. 18-007

date:	August 15, 2019
drawn by:	T. DURAN
checked by:	D. GRAHAM
file name:	18074A_P101
revisions:	



P-101a
ALTERNATE



GENERAL NOTES

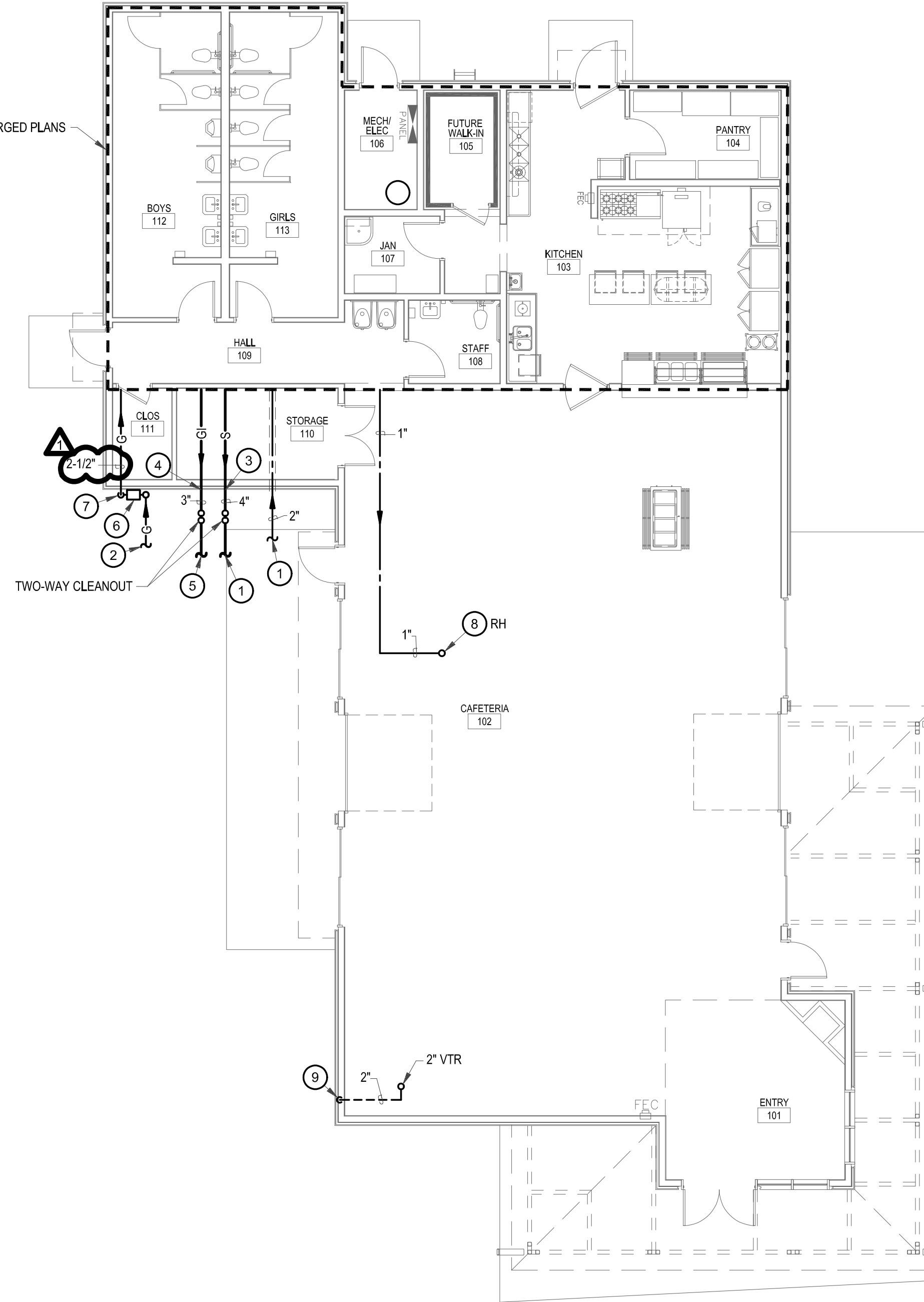
- A REFER TO SHEET P-501 FOR PLUMBING SYMBOLS FOR ANY VIOLATIONS OF CITY CODE OR ORDINANCE.
- B REFER TO SHEET P-001 FOR FINISHING LEVELS, NOTES AND SCHEDULES.

DATE: 09/13/19

KEYED NOTES

- 1 REFER TO CIVIL PLANS FOR CONTINUATION.
- 2 REFER TO SHEET PS-101 FOR CONTINUATION.
- 3 INVERT ELEVATION = 33" +/- BELOW FINISHED FLOOR.
- 4 INVERT ELEVATION = 32.5" +/- BELOW FINISHED FLOOR.
- 5 EXTEND 3" GREASE SEWER (GI) TO GREASE INTERCEPTOR. REFER TO CIVIL PLANS FOR CONTINUATION AND LOCATION OF GREASE INTERCEPTOR.
- 6 NEW GAS METER AND REGULATOR ASSEMBLY INSTALLED BY LOCAL GAS AUTHORITY. GAS METER AND REGULATOR TO BE SET FOR A TOTAL LOAD OF 1124 CFH. REGULATOR TO REDUCE PRESSURE DOWN TO 7" W.C. CONTRACTOR SHALL COORDINATE LOCATION, SIZE AND INSTALLATION AND SHALL PAY FOR ALL COST ASSOCIATED WITH YARD LINE, GAS REGULATOR AND METER, ETC. FOR A COMPLETE SYSTEM.
- 7 PROVIDE FULL BORE GAS SHUTOFF VALVE DOWNSTREAM OF GAS METER FOR ISOLATION AND SAFETY, PER LOCAL CODE. EXTEND AND ROUTE 2-1/2" GAS LINE UP ALONG WALL TO ROOF TOP AND ROUTE AS SHOWN.
- 8 1" CW UP TO ROOF HYDRANT. COORDINATE EXACT LOCATION WITH ARCHITECT AND SOLAR PANELS.
- 9 2" VENT FROM BELOW FLOOR UP IN WALL TO CEILING SPACE AND ROUTE AS SHOWN. REFER TO SHEET PS-101 FOR CONTINUATION.

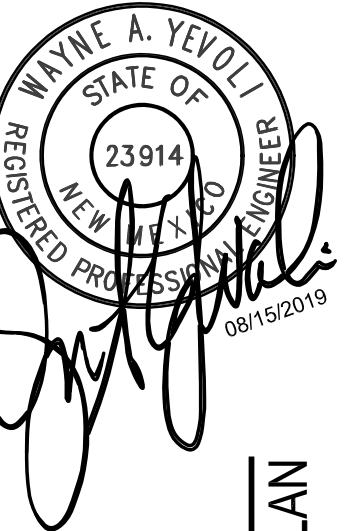
REFER TO ENLARGED PLANS ON SHEET P-401



B3 PLUMBING PLAN
SCALE: 1/8" = 1'-0"



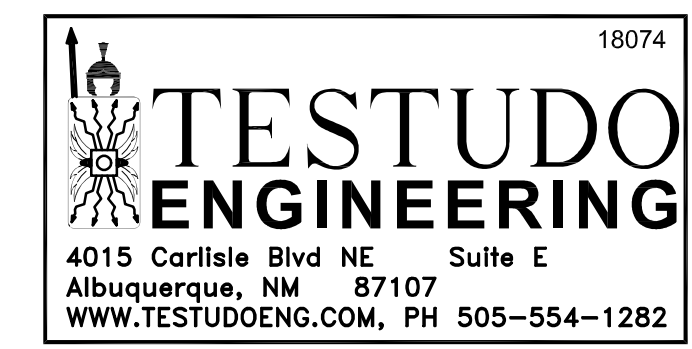
VIGIL & ASSOCIATES
ARCHITECTURAL GROUP, P.C.
4477 Irving Ave. Suite 200
Albuquerque, NM 87114
Ph: 505.850.5030 - Fax: 505.850.5031
www.va-architects.com



NEW MULTI-PURPOSE BUILDING
for ST TERESA CATHOLIC SCHOOL

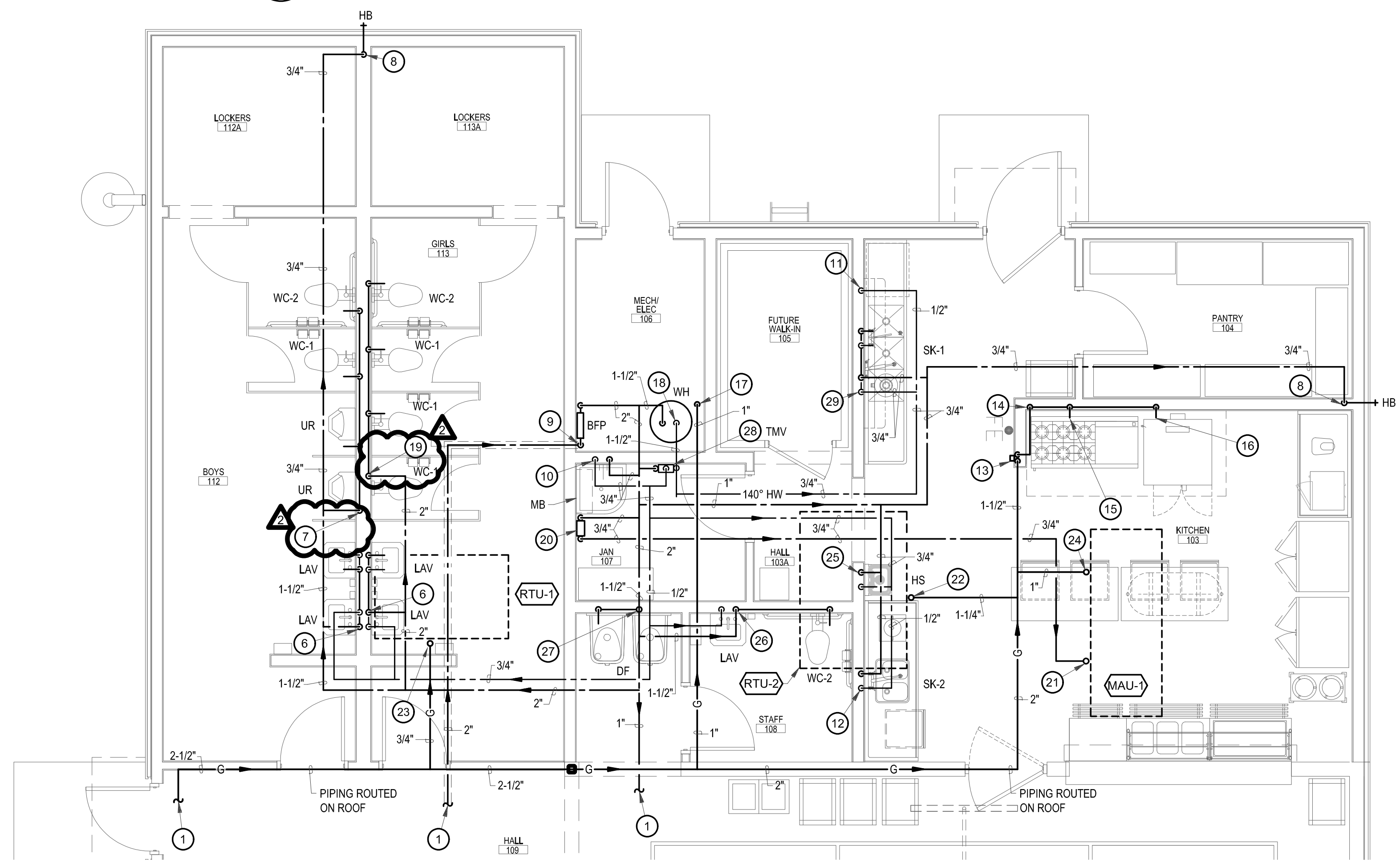
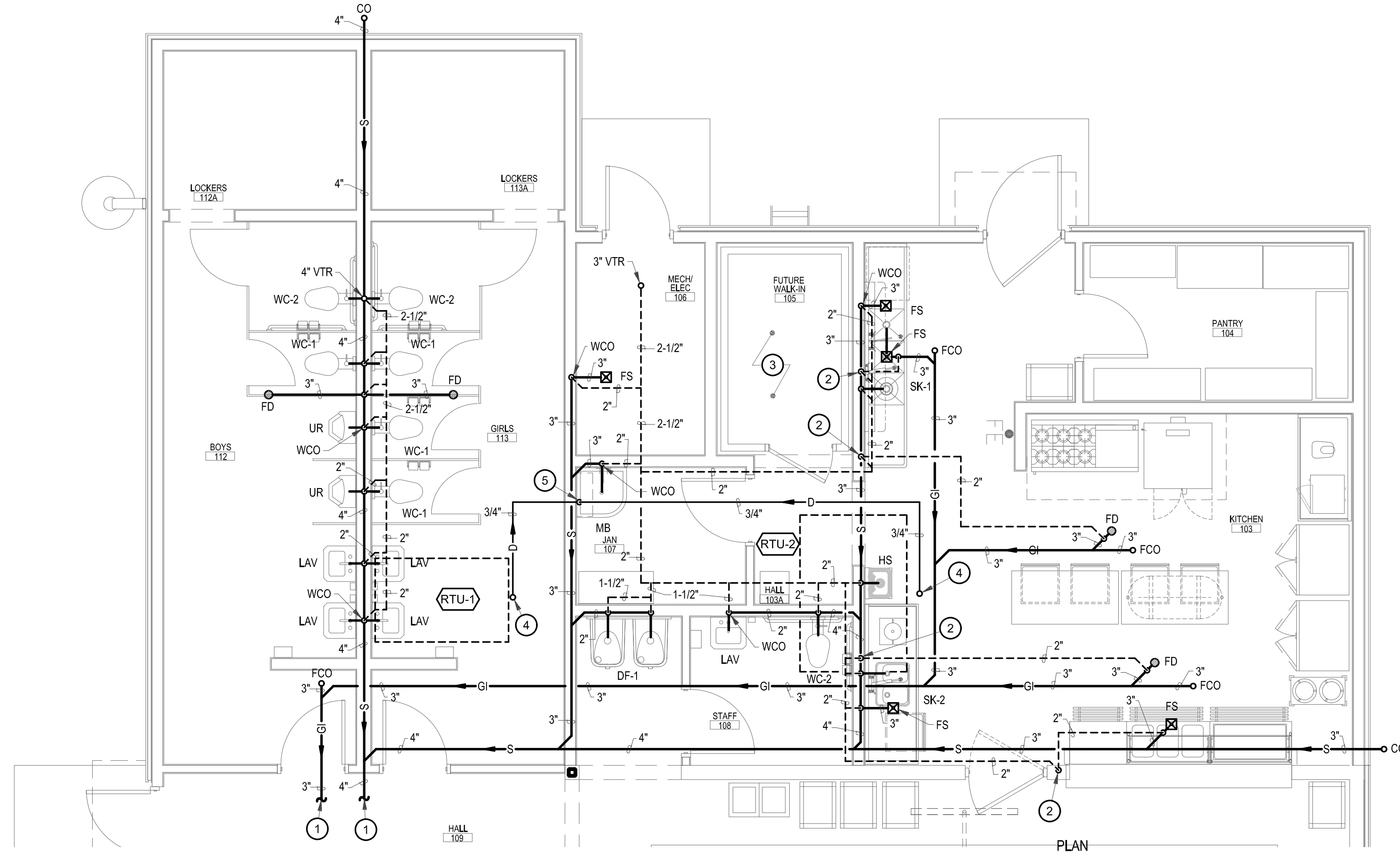
PLUMBING PLAN

date:	August 15, 2019
drawn by:	T. DURAN
checked by:	D. GRAHAM
file name:	18074_P101
revisions:	



P-101

project no. 18-007



GENERAL NOTES

- A REFER TO SHEET P-501 FOR PLUMBING SYMBOLS, NOTES AND SCHEDULES.
- B REFER TO SHEET P-001 FOR FINISHING LEVELS, NOTES AND SCHEDULES.

KEYED NOTES

- REFER TO SHEET P-101 FOR CONTINUATION.
- 2" VENT FROM BELOW FLOOR UP IN WALL TO CEILING SPACE AND ROUTE AS SHOWN.
- ROUTE FULL SIZE CONDENSATE FROM FUTURE WALK-IN COOLER EVAPORATOR ROUTED TO FLOOR SINK IN MECHANICAL ROOM AND TERMINATE AT FLOOR SINK WITH AIR GAP. ALL HORIZONTAL CONDENSATE PIPING SHALL SLOPE AT 1/8" PER FOOT TOWARDS DISCHARGE. COORDINATE ROUTING WITH OTHER TRADES.
- FULL SIZE CONDENSATE WITH P-TRAP FROM MECHANICAL UNIT DOWN THROUGH ROOF INTO CEILING SPACE AND ROUTE AS SHOWN. ALL HORIZONTAL CONDENSATE PIPING SHALL SLOPE AT 1/8" PER FOOT TOWARDS DISCHARGE. COORDINATE ROUTING WITH OTHER TRADES.
- 3/4" CONDENSATE LINE DOWN IN WALL, ELBOW THROUGH WALL AND TERMINATE AT MOP BASIN WITH AIR GAP.
- 3/4" CWHW DOWN IN WALL. ROUTE 1/2" CWHW TO EACH LAVATORY.
- 1-1/2" CW DOWN IN WALL ROUTE 1" CW TO URINAL AND 1-1/2" CW TO EACH WATER CLOSET. PROVIDE WATER HAMMER ARRESTOR (WHA) WITH ACCESS PANEL PRIOR TO LAST WATER CLOSET. COORDINATE WITH ARCHITECT.
- 3/4" CW DOWN IN WALL TO HOSE BIBB (HB).
- 2" CW FROM BELOW FLOOR UP TO BACKFLOW PREVENTER (BFP) AND EXTEND TO CEILING SPACE AND ROUTE AS SHOWN. INSTALL PER DETAIL ON DETAIL SHEET.
- 3/4" CWHW DOWN IN WALL TO MOP BASIN.
- 1/2" 140° HW DOWN IN WALL FOR FUTURE DISHWASHER. COORDINATE WITH KITCHEN EQUIPMENT SUPPLIER.
- 1/2" CWHW DOWN IN WALL TO SINK.
- 1-1/2" GAS LINE DOWN THROUGH ROOF AND IN WALL TO SOLENOID VALVE FOR EMERGENCY SHUT-OFF. INSTALL MANUAL LEVER HANDLE EMERGENCY SHUT-OFF VALVE UP 5'-0" ABOVE FINISH FLOOR AND LABEL "EMERGENCY SHUT-OFF VALVE - GAS SERVICE - CLOSE ONLY IN CASE OF EMERGENCY". INSTALL GAS SOLENOID VALVE IN DROP AND WIRE IN SERIES WITH HOOD FIRE PROTECTION SYSTEM TO CLOSE IN CASE OF EMERGENCY AND FIRE PROTECTION SYSTEM DISCHARGE. COORDINATE EXACT LOCATION WITH ARCHITECT AND ELECTRICAL. EXTEND 1-1/2" GAS LINE UP IN WALL TO CEILING SPACE AND ROUTE AS SHOWN.
- 1-1/2" GAS LINE DOWN IN WALL AND EXTEND TO KITCHEN EQUIPMENT AS SHOWN.
- 1-1/4" GAS LINE TO GAS RANGE WITH GRIDDLE. PROVIDED GAS VALVE, UNION, DIRT LEG AND FLEX CONNECTION. TOTAL LOAD FOR GAS RANGE WITH GRIDDLE IS 302 MBH. COORDINATE WITH KITCHEN EQUIPMENT SUPPLIER.
- 1" GAS LINE TO GAS CONVECTION OVEN. PROVIDED GAS VALVE, UNION, DIRT LEG AND FLEX CONNECTION. TOTAL LOAD FOR GAS CONVECTION OVEN IS 120 MBH. COORDINATE WITH KITCHEN EQUIPMENT SUPPLIER.
- 1" GAS LINE DOWN THROUGH ROOF TO WATER HEATER. PROVIDED GAS VALVE, UNION, DIRT LEG AND FLEX CONNECTION. TOTAL LOAD FOR WATER HEATER IS 160 MBH.
- 1-1/2" CW DOWN TO WATER HEATER. 1-1/2" HW UP FROM WATER HEATER. CONNECT PER MANUFACTURE'S RECOMMENDATIONS. INSTALL PER DETAIL ON DETAIL SHEET.
- 2" CW DOWN IN WALL. ROUTE 1-1/2" CW TO EACH WATER CLOSET. PROVIDE WATER HAMMER ARRESTOR (WHA) WITH ACCESS PANEL PRIOR TO LAST WATER CLOSET. COORDINATE WITH ARCHITECT.
- 3/4" CW DOWN ALONG WALL TO MAKE-UP WATER AND DRAIN ASSEMBLY. EXTEND 3/4" MAKE-UP WATER TO CEILING SPACE AND ROUTE AS SHOWN. REFER TO DETAIL.
- 3/4" MAKE-UP WATER UP THROUGH ROOF TO MECHANICAL EQUIPMENT AND CONNECT PER MANUFACTURE'S REQUIREMENTS.
- 1-1/4" GAS LINE TO ROOF TOP UNIT. PROVIDED GAS VALVE, UNION, DIRT LEG AND FLEX CONNECTION. TOTAL LOAD FOR ROOF TOP UNIT IS 350 MBH.
- 1" GAS LINE TO ROOF TOP UNIT. PROVIDED GAS VALVE, UNION, DIRT LEG AND FLEX CONNECTION. TOTAL LOAD FOR ROOF TOP UNIT IS 67 MBH.
- 1" GAS LINE TO MAKE-UP AIR UNIT. PROVIDED GAS VALVE, UNION, DIRT LEG AND FLEX CONNECTION. TOTAL LOAD FOR MAKE-UP AIR UNIT IS 125 MBH.
- 1/2" CWHW DOWN IN WALL TO HAND SINK.
- 1-1/2" CW AND 1/2" HW DOWN IN WALL. ROUTE 1/2" CWHW TO LAVATORY AND EXTEND 1-1/2" CW TO WATER CLOSET. PROVIDE WATER HAMMER ARRESTOR (WHA) WITH ACCESS PANEL PRIOR TO WATER CLOSET. COORDINATE WITH ARCHITECT.
- 1/2" CW DOWN IN WALL AND ROUTE 1/2" CW TO EACH DRINKING FOUNTAIN.
- 3/4" CW AND 3/4" 140° HW DOWN TO WALL MOUNTED THERMOSTATIC MIXING VALVE (TMV). EXTEND 3/4" HW UP FROM TMV UP TO CEILING SPACE AND ROUTE AS SHOWN. TMV SHALL BE SET TO AN OUTPUT OF 110° F TEMPERATURE.
- 3/4" CWHW DOWN IN WALL. ROUTE 1/2" CWHW TO EACH FAUCET.

KITCHEN EQUIPMENT NOTE
"DISHWASHER", ETC. SHALL BE FURNISHED AND SET IN PLACE BY OTHERS UNDER ANOTHER SECTION OF PLANS AND SPECIFICATIONS. THIS CONTRACTOR SHALL BE RESPONSIBLE FOR ALL ROUGH-IN AND CONNECTIONS OF EQUIPMENT REQUIRING COLD WATER, HOT WATER, DIRECT WASTE AND VENT, INDIRECT WASTE, DRAIN PIPING, GAS PIPING, ETC., IF REQUIRED. THIS CONTRACTOR SHALL VERIFY EXACT MODEL OF EQUIPMENT ACTUALLY FURNISHED AND SHALL BE RESPONSIBLE FOR ALL REQUIRED CONNECTIONS. CONTRACTOR TO FURNISH ALL INTERCONNECTING PIPING, P-TRAPS, INDIRECT WASTE LINES, ETC., TO MAKE EQUIPMENT OPERATIONAL AND TO COMPLY WITH ALL APPLICABLE CODES.

TESTUDO ENGINEERING
18074A
4015 Carlisle Blvd NE Suite E
Albuquerque, NM 87110
WWW.TESTUDOENG.COM, PH 505-554-1282

date:	September 5, 2019
drawn by:	T. DURAN
checked by:	D. GRAHAM
file name:	18074A_P401
revisions:	

P-401a
ALTERNATE

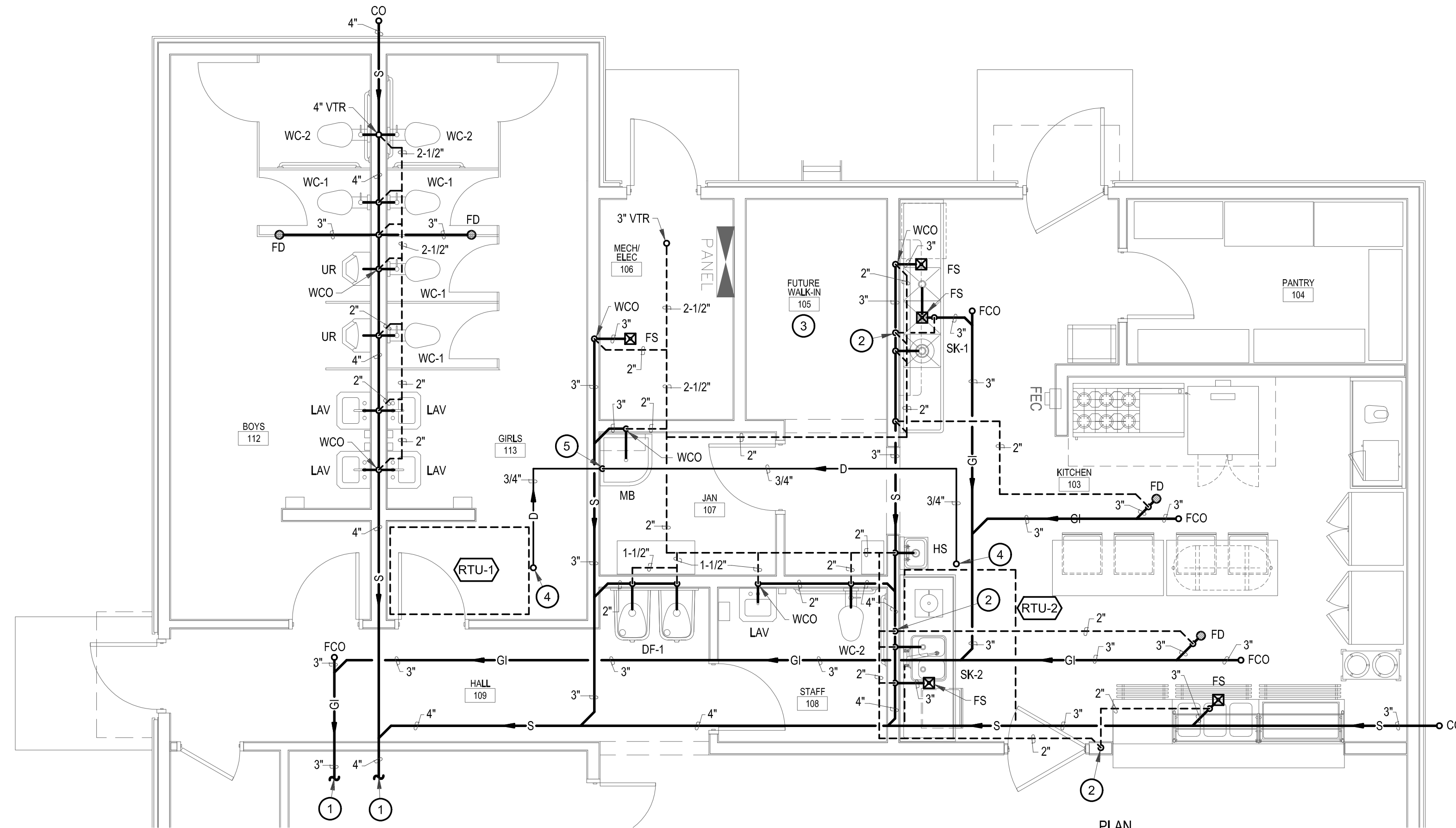
VIGIL & ASSOCIATES
ARCHITECTURAL GROUP, P.C.
4477 Wyoming Ave. SE #214
Albuquerque, NM 87114
Ph: 505.880.5030 - Fax: 505.880.5031
www.va-architects.com

WYNNE A. YEVOLI
REGISTERED PROFESSIONAL ENGINEER
STATE OF NEW MEXICO
23914
09/05/2019

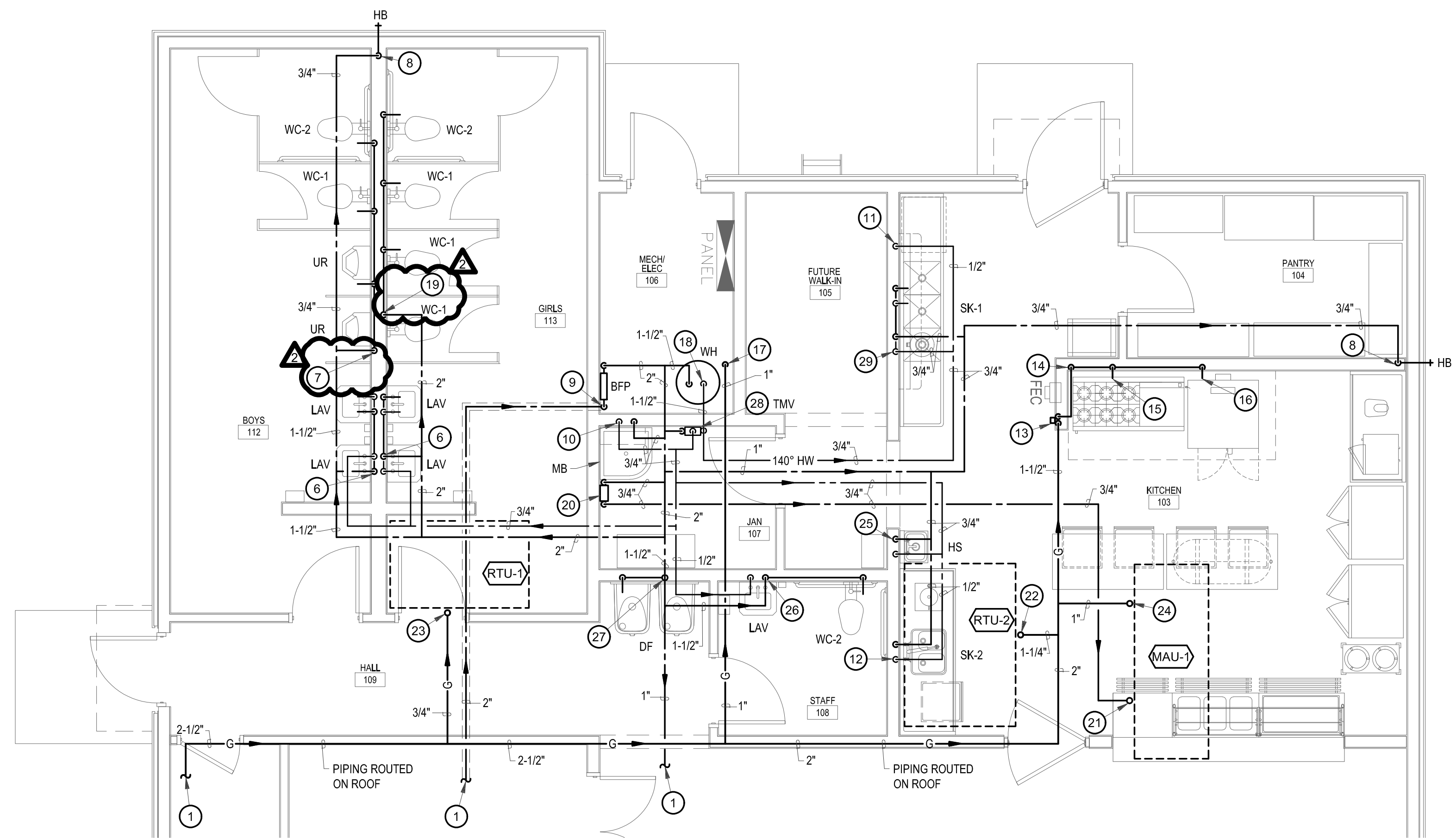
NEW MULTI-PURPOSE BUILDING
for ST TERESA CATHOLIC SCHOOL

PLUMBING ENLARGED PLANS

project no. 18-007



C2 SOIL AND VENT ENLARGED PLAN
SCALE: 1/4" = 1'-0"



A2 GAS AND DOMESTIC WATER ENLARGED PLAN
SCALE: 1/4" = 1'-0"

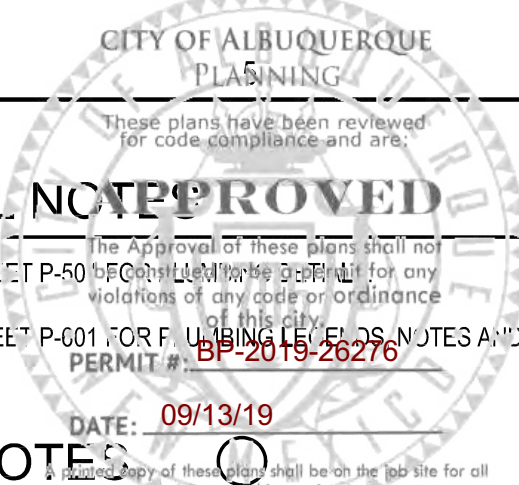
KITCHEN EQUIPMENT NOTE
"DISHWASHER", ETC. SHALL BE FURNISHED AND SET IN PLACE BY OTHERS UNDER ANOTHER SECTION OF PLANS AND SPECIFICATIONS. THIS CONTRACTOR SHALL BE RESPONSIBLE FOR ALL ROUGH-IN AND CONNECTIONS OF EQUIPMENT REQUIRING COLD WATER, HOT WATER, DIRECT WASTE AND VENT, INDIRECT WASTE, DRAIN PIPING, GAS PIPING, ETC., IF REQUIRED. THIS CONTRACTOR SHALL VERIFY EXACT MODEL OF EQUIPMENT ACTUALLY FURNISHED AND SHALL BE RESPONSIBLE FOR ALL REQUIRED CONNECTIONS. CONTRACTOR TO FURNISH ALL INTERCONNECTING PIPING, P-TRAPS, INDIRECT WASTE LINES, ETC., TO MAKE EQUIPMENT OPERATIONAL AND TO COMPLY WITH ALL APPLICABLE CODES.

GENERAL NOTES

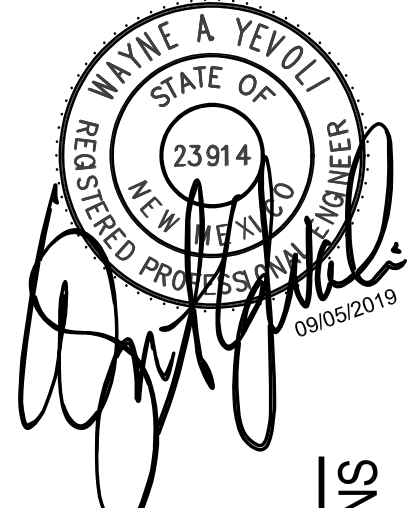
- A REFER TO SHEET P-501 FOR FLOOR FINISHES, TILES, ETC.
 - B REFER TO SHEET P-001 FOR FINISHES, LEVELS, NOTES AND SCHEDULES.
- DATE: 09/13/19

KEYED NOTES

- 1 REFER TO SHEET P-101 FOR CONTINUATION.
- 2 2" VENT FROM BELOW FLOOR UP IN WALL TO CEILING SPACE AND ROUTE AS SHOWN.
- 3 ROUTE FULL SIZE CONDENSATE FROM FUTURE WALK-IN COOLER EVAPORATOR ROUTED TO FLOOR SINK IN MECHANICAL ROOM AND TERMINATE AT FLOOR SINK WITH AIR GAP. ALL HORIZONTAL CONDENSATE PIPING SHALL SLOPE AT 1/8" PER FOOT TOWARDS DISCHARGE. COORDINATE ROUTING WITH OTHER TRADES.
- 4 FULL SIZE CONDENSATE WITH P-TRAP FROM MECHANICAL UNIT DOWN THROUGH ROOF INTO CEILING SPACE AND ROUTE AS SHOWN. ALL HORIZONTAL CONDENSATE PIPING SHALL SLOPE AT 1/8" PER FOOT TOWARDS DISCHARGE. COORDINATE ROUTING WITH OTHER TRADES.
- 5 3/4" CONDENSATE LINE DOWN IN WALL, ELBOW THROUGH WALL AND TERMINATE AT MOP BASIN WITH AIR GAP.
- 6 3/4" CW/WH DOWN IN WALL. ROUTE 1/2" CW/WH TO EACH LAVATORY.
- 7 1-1/2" CW DOWN IN WALL. ROUTE 1" CW TO URINAL AND 1-1/2" CW TO EACH WATER CLOSET. PROVIDE WATER HAMMER ARRESTOR (WHA) WITH ACCESS PANEL PRIOR TO LAST WATER CLOSET. COORDINATE WITH ARCHITECT.
- 8 3/4" CW DOWN IN WALL TO HOSE BIBB (HB).
- 9 2" CW FROM BELOW FLOOR UP TO BACKFLOW PREVENTER (BFP) AND EXTEND TO CEILING SPACE AND ROUTE AS SHOWN.
- 10 3/4" CW/WH DOWN IN WALL TO MOP BASIN.
- 11 1/2" 140° HW DOWN IN WALL FOR FUTURE DISHWASHER. COORDINATE WITH KITCHEN EQUIPMENT SUPPLIER.
- 12 1/2" CW/WH DOWN IN WALL TO SINK.
- 13 1-1/2" GAS LINE DOWN THROUGH ROOF AND IN WALL TO SOLENOID VALVE FOR EMERGENCY SHUT-OFF. INSTALL MANUAL LEVER HANDLE EMERGENCY SHUT-OFF VALVE UP 5'-0" ABOVE FINISH FLOOR AND LABEL. EMERGENCY SHUT-OFF VALVE - GAS SERVICE - CLOSE ONLY IN CASE OF EMERGENCY. INSTALL GAS SOLENOID VALVE IN DROP AND WIRE IN SERIES WITH HOOD FIRE PROTECTION SYSTEM TO CLOSE IN CASE OF EMERGENCY AND FIRE PROTECTION SYSTEM DISCHARGE. COORDINATE EXACT LOCATION WITH ARCHITECT AND ELECTRICAL. EXTEND 1-1/2" GAS LINE UP IN WALL TO CEILING SPACE AND ROUTE AS SHOWN.
- 14 1-1/2" GAS LINE DOWN IN WALL AND EXTEND TO KITCHEN EQUIPMENT AS SHOWN.
- 15 1-1/4" GAS LINE TO GAS RANGE WITH GRIDDLE. PROVIDED GAS VALVE, UNION, DIRT LEG AND FLEX CONNECTION. TOTAL LOAD FOR GAS RANGE WITH GRIDDLE IS 302 MBH. COORDINATE WITH KITCHEN EQUIPMENT SUPPLIER.
- 16 1" GAS LINE TO GAS CONVECTION OVEN. PROVIDED GAS VALVE, UNION, DIRT LEG AND FLEX CONNECTION. TOTAL LOAD FOR GAS CONVECTION OVEN IS 120 MBH. COORDINATE WITH KITCHEN EQUIPMENT SUPPLIER.
- 17 1" GAS LINE DOWN THROUGH ROOF TO WATER HEATER. PROVIDED GAS VALVE, UNION, DIRT LEG AND FLEX CONNECTION. TOTAL LOAD FOR WATER HEATER IS 160 MBH.
- 18 1-1/2" CW DOWN TO WATER HEATER. 1-1/2" HW UP FROM WATER HEATER. CONNECT PER MANUFACTURE'S RECOMMENDATIONS. REFER TO DETAIL.
- 19 2" CW DOWN IN WALL. ROUTE 1-1/2" CW TO EACH WATER CLOSET. PROVIDE WATER HAMMER ARRESTOR (WHA) WITH ACCESS PANEL PRIOR TO LAST WATER CLOSET. COORDINATE WITH ARCHITECT.
- 20 3/4" CW DOWN ALONG WALL TO MAKE-UP WATER AND DRAIN ASSEMBLY. EXTEND 3/4" MAKE-UP WATER TO CEILING SPACE AND ROUTE AS SHOWN. REFER TO DETAIL.
- 21 3/4" MAKE-UP WATER UP THROUGH ROOF TO MECHANICAL EQUIPMENT AND CONNECT PER MANUFACTURE'S REQUIREMENTS.
- 22 1-1/4" GAS LINE TO ROOF TOP UNIT. PROVIDED GAS VALVE, UNION, DIRT LEG AND FLEX CONNECTION. TOTAL LOAD FOR ROOF TOP UNIT IS 350 MBH.
- 23 1" GAS LINE TO ROOF TOP UNIT. PROVIDED GAS VALVE, UNION, DIRT LEG AND FLEX CONNECTION. TOTAL LOAD FOR ROOF TOP UNIT IS 67 MBH.
- 24 1" GAS LINE TO MAKE-UP AIR UNIT. PROVIDED GAS VALVE, UNION, DIRT LEG AND FLEX CONNECTION. TOTAL LOAD FOR MAKE-UP AIR UNIT IS 125 MBH.
- 25 1/2" CW/WH DOWN IN WALL TO HAND SINK.
- 26 1-1/2" CW AND 1/2" HW DOWN IN WALL. ROUTE 1/2" CW/WH TO LAVATORY AND EXTEND 1-1/2" CW TO WATER CLOSET. PROVIDE WATER HAMMER ARRESTOR (WHA) WITH ACCESS PANEL PRIOR TO WATER CLOSET. COORDINATE WITH ARCHITECT.
- 27 1/2" CW DOWN IN WALL AND ROUTE 1/2" CW TO EACH DRINKING FOUNTAIN.
- 28 3/4" CW AND 3/4" 140° HW DOWN TO WALL MOUNTED THERMOSTATIC MIXING VALVE (TMV). EXTEND 3/4" HW UP FROM TMV UP TO CEILING SPACE AND ROUTE AS SHOWN. TMV SHALL BE SET TO AN OUTPUT OF 110° F TEMPERATURE.
- 29 3/4" CW/WH DOWN IN WALL. ROUTE 1/2" CW/WH TO EACH FAUCET.



VIGIL & ASSOCIATES
ARCHITECTURAL GROUP, P.C.
4477 Wyoming Ave. Suite 114
Albuquerque, NM 87114
Ph: 505.850.5030 - Fax: 505.850.5031
www.va-architects.com



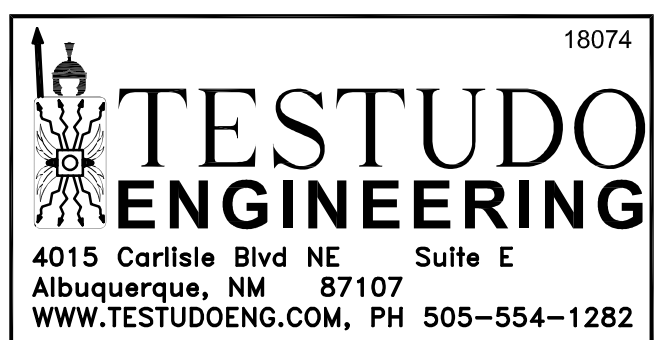
NEW MULTI-PURPOSE BUILDING
for ST TERESA CATHOLIC SCHOOL

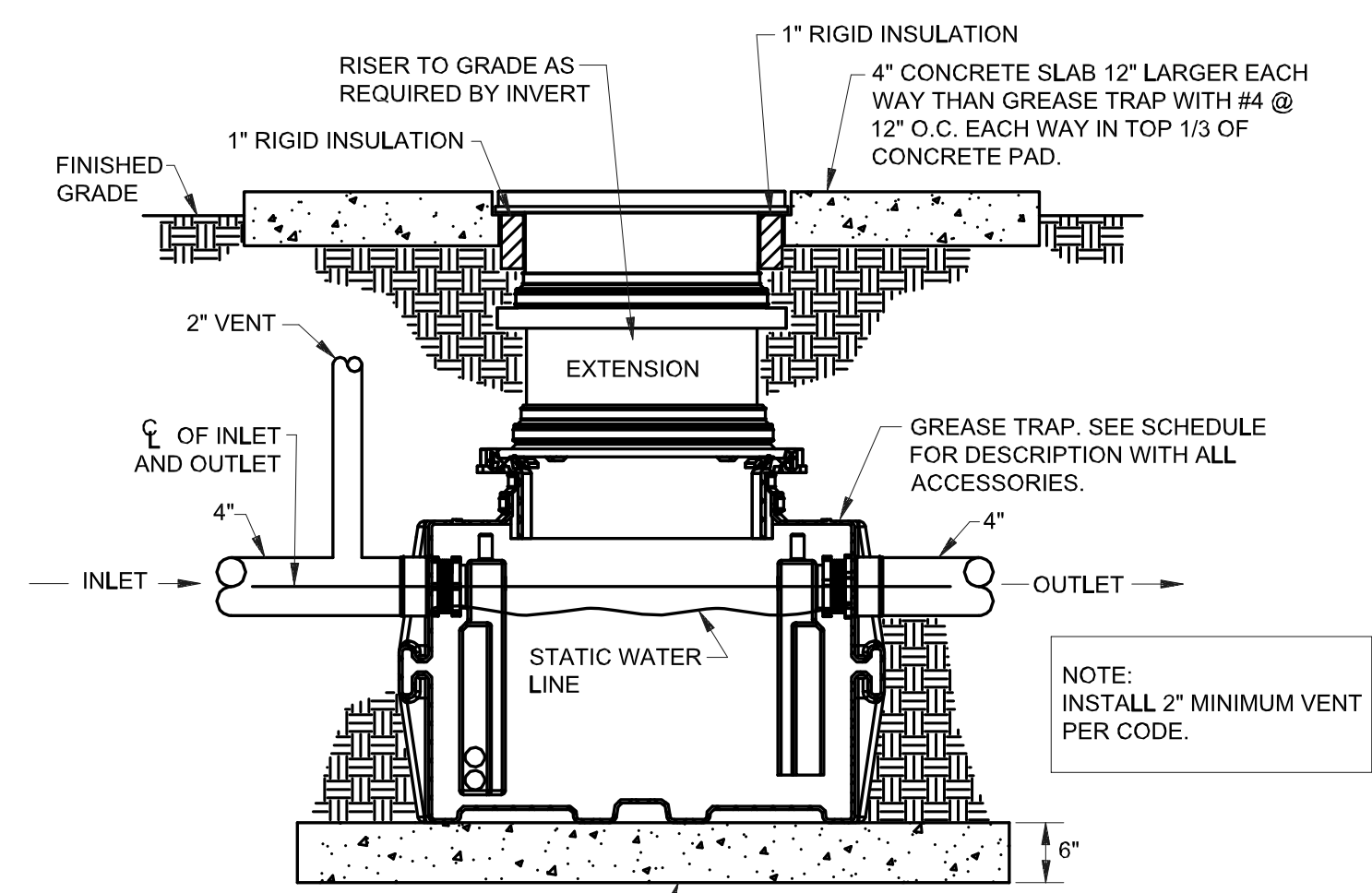
date:	September 5, 2019
drawn by:	T. DURAN
checked by:	D. GRAHAM
file name:	18074_P401
revisions:	

P-401

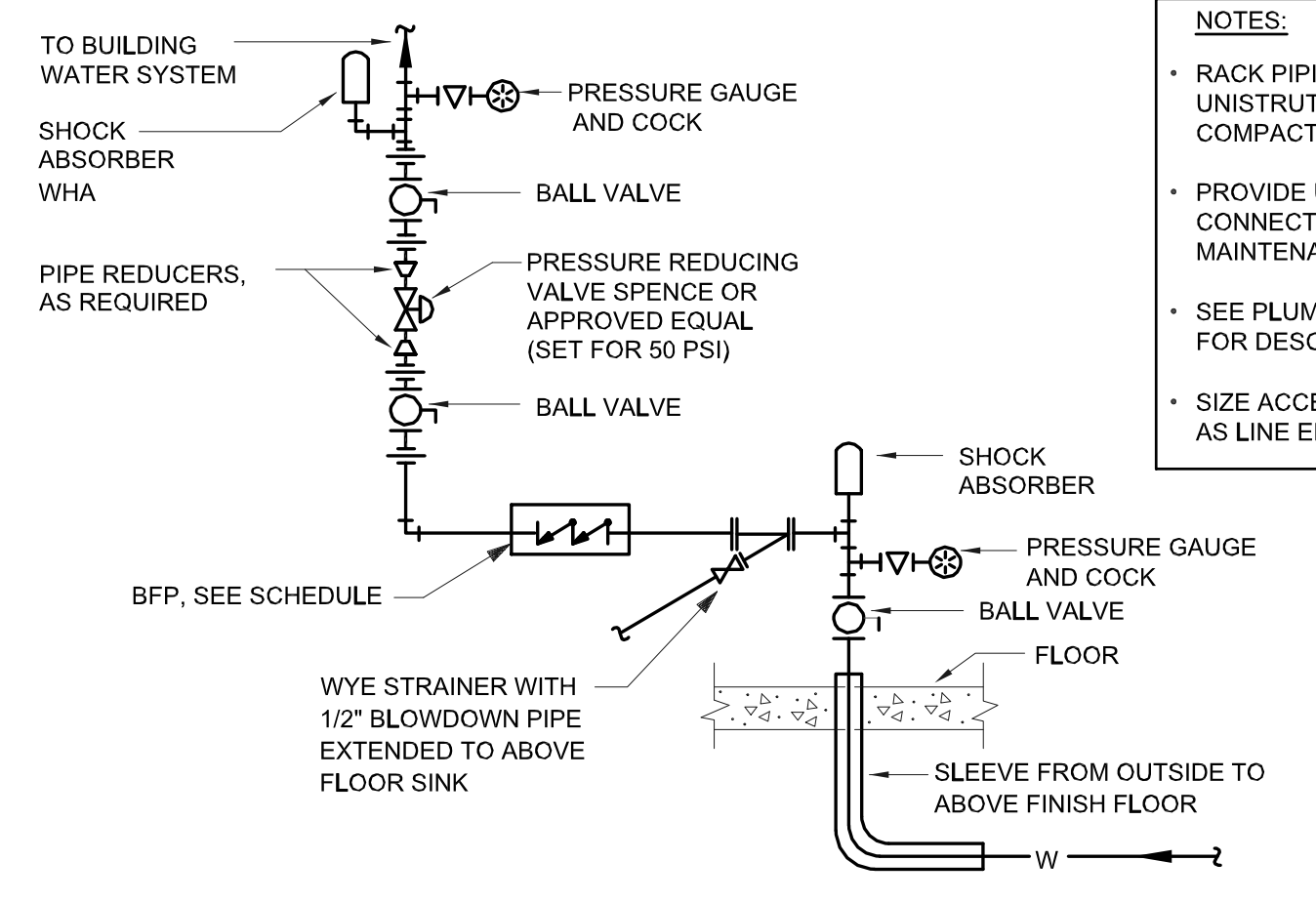
PLUMBING ENLARGED PLANS

project no. 18-007

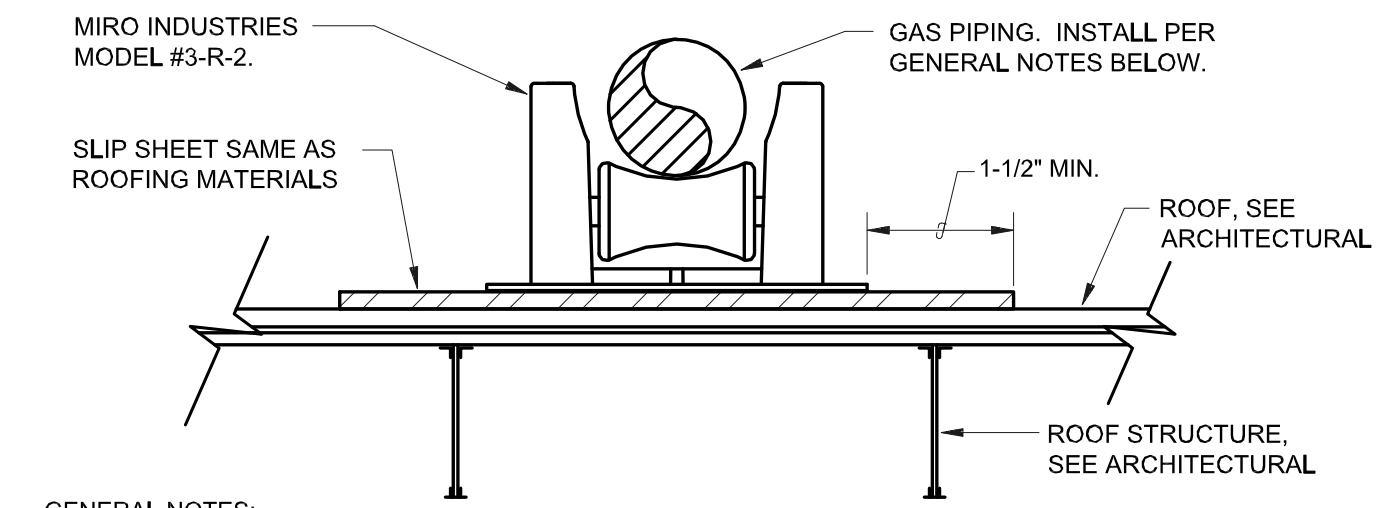




GREASE INTERCEPTOR DETAIL
NOT TO SCALE



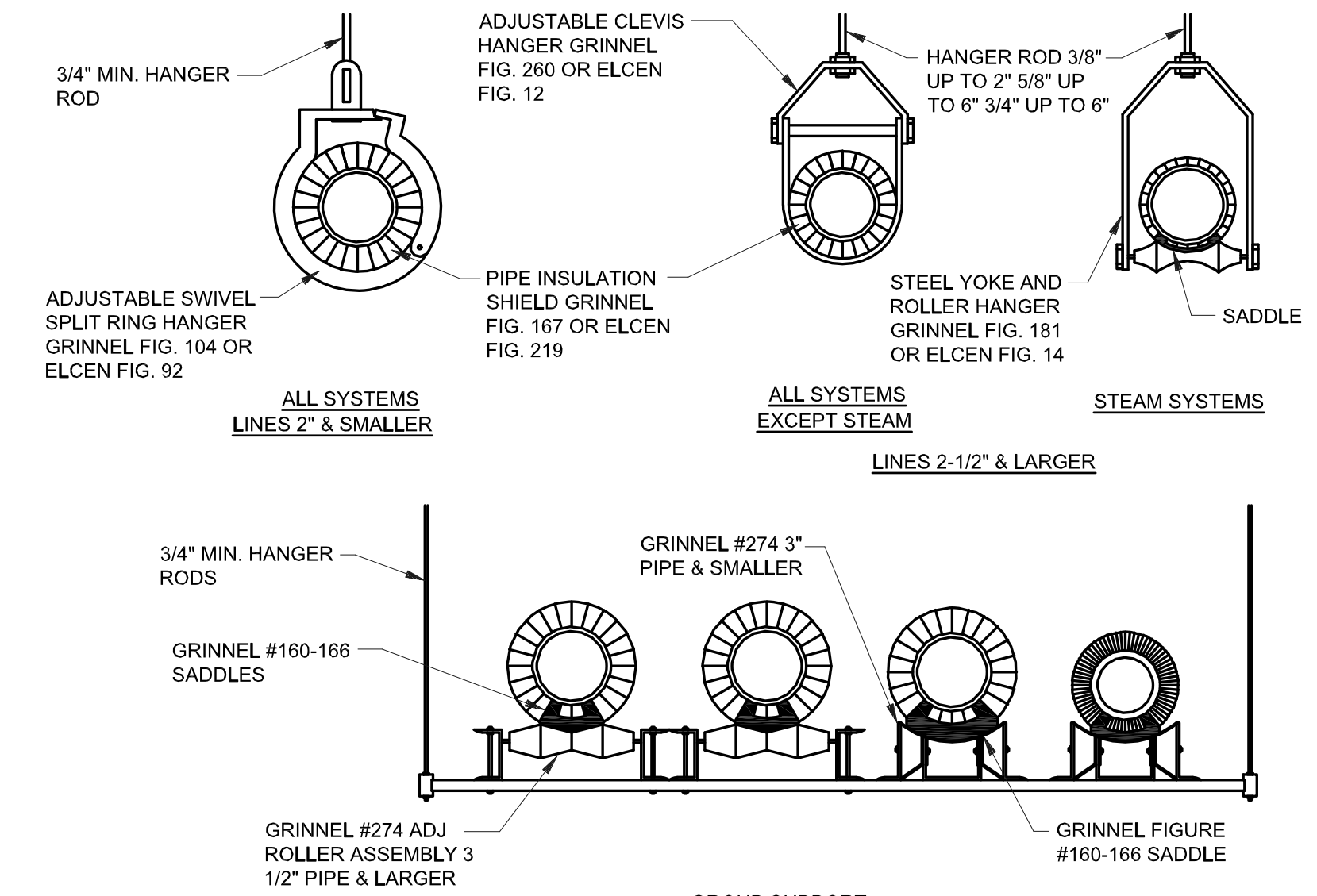
DOMESTIC WATER ENTRANCE DETAIL
NOT TO SCALE



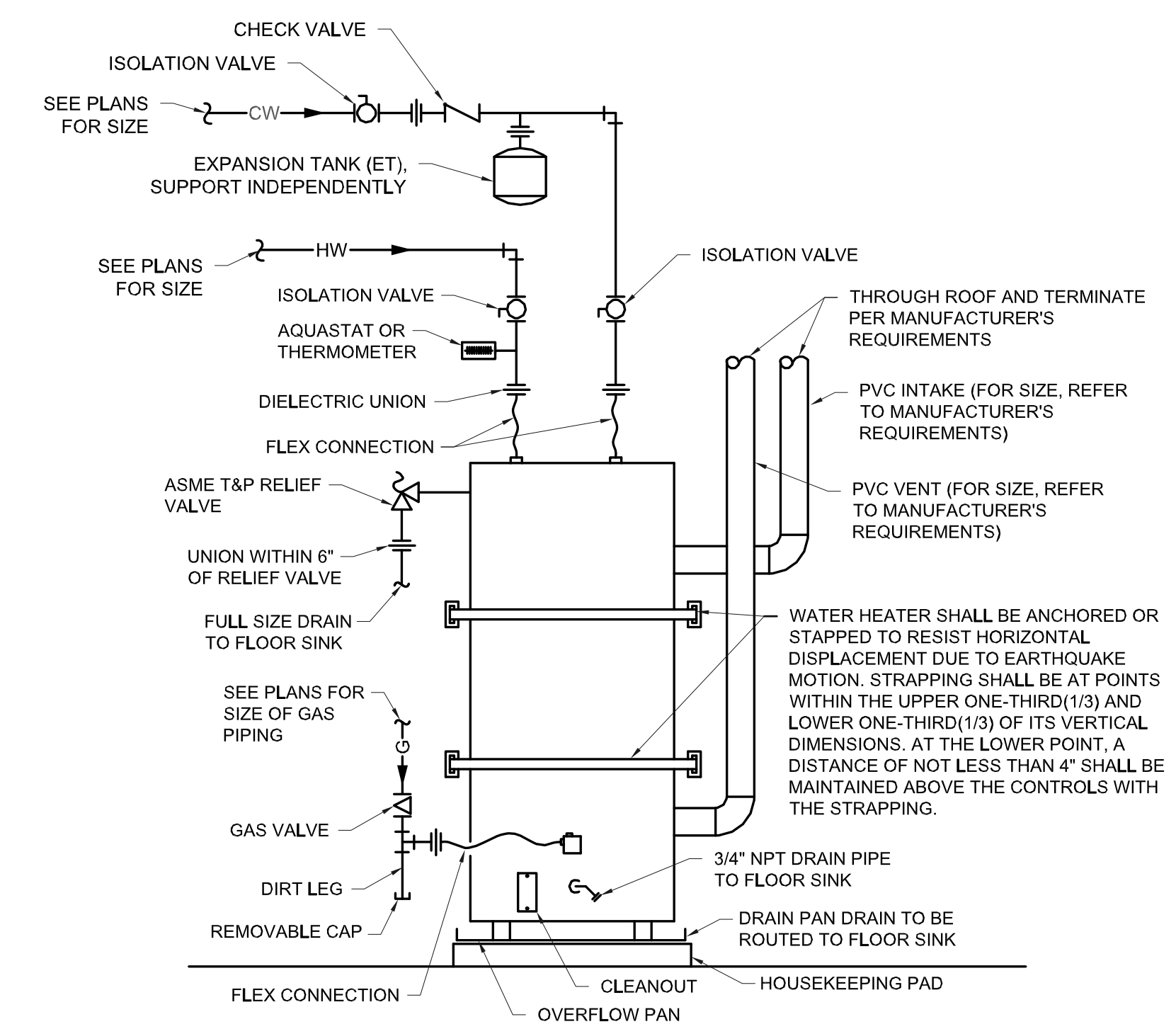
- GENERAL NOTES:**
1. GAS PIPING SHALL BE LOCATED ABOVE ROOF.
 2. PIPE SIZE SUPPORT SPACING

1/2"	6'-0"
3/4" to 1"	8'-0"
1-1/4" & LARGER	10'-0"

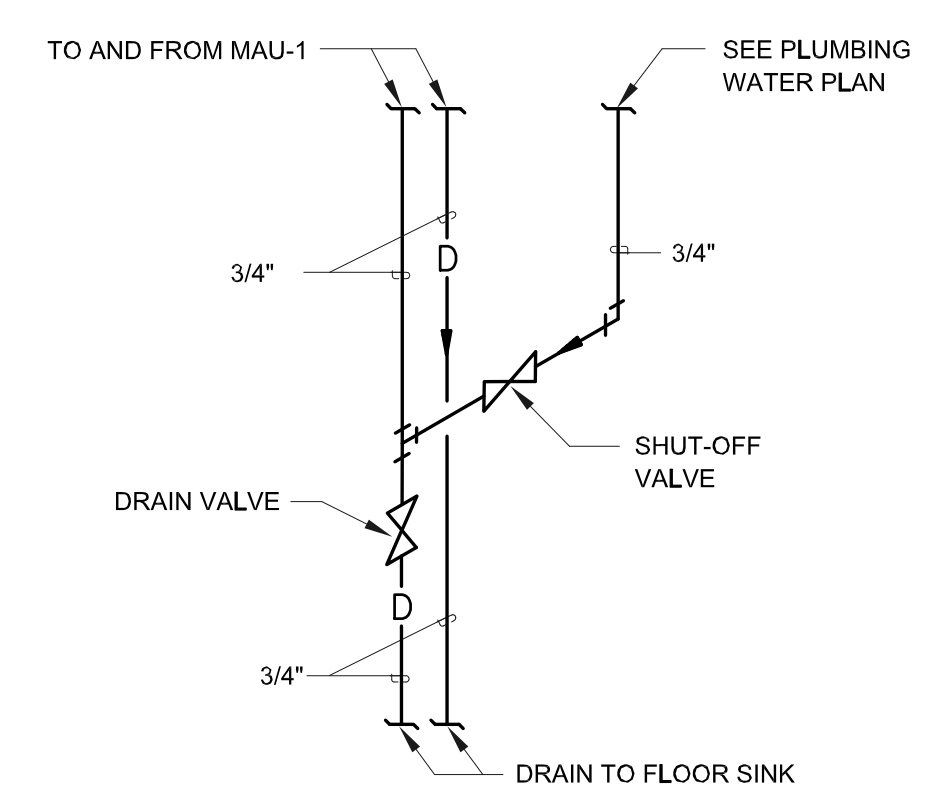
GAS PIPING SUPPORT DETAIL
NOT TO SCALE



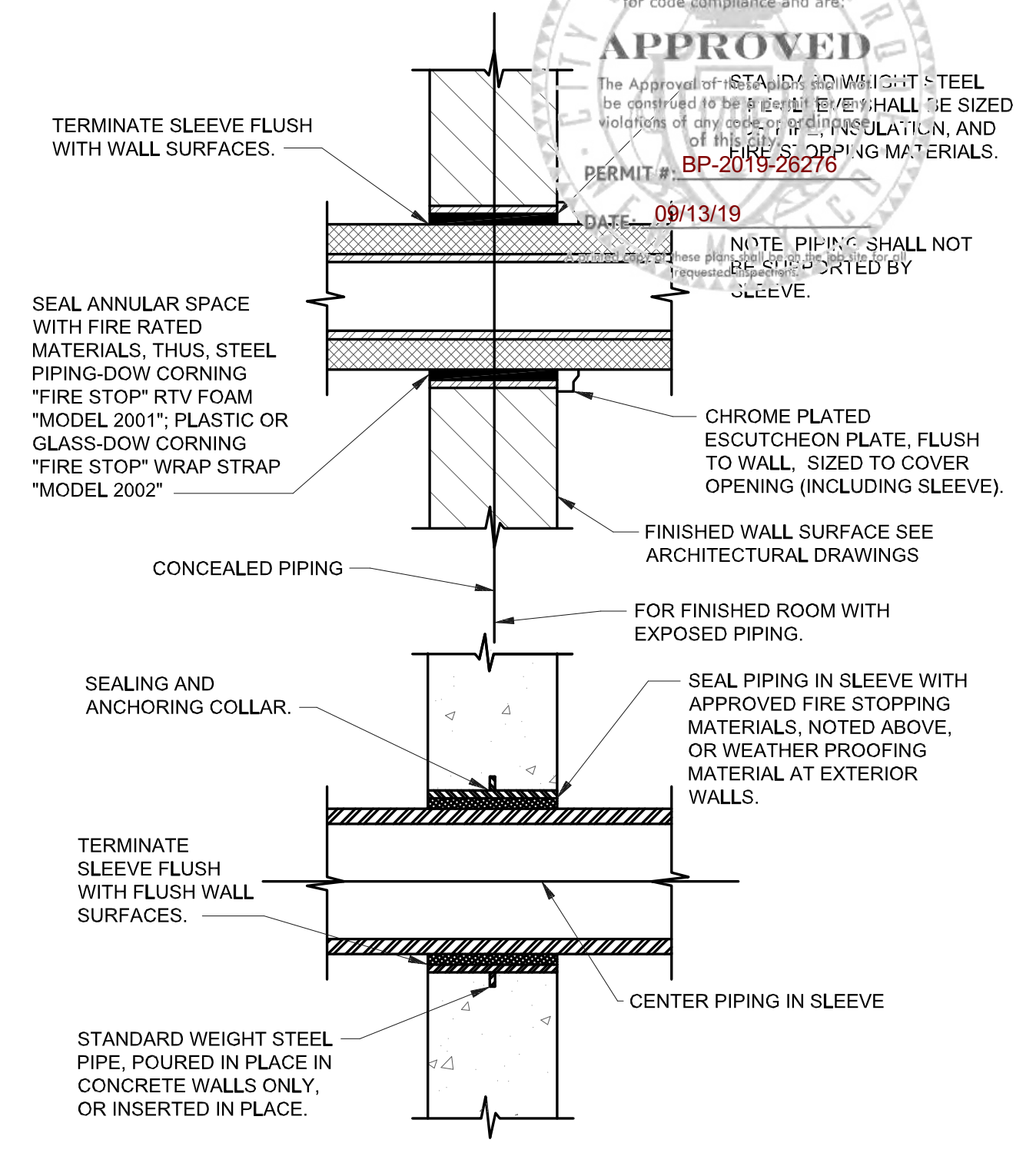
PIPE SUPPORTS DETAIL
NOT TO SCALE



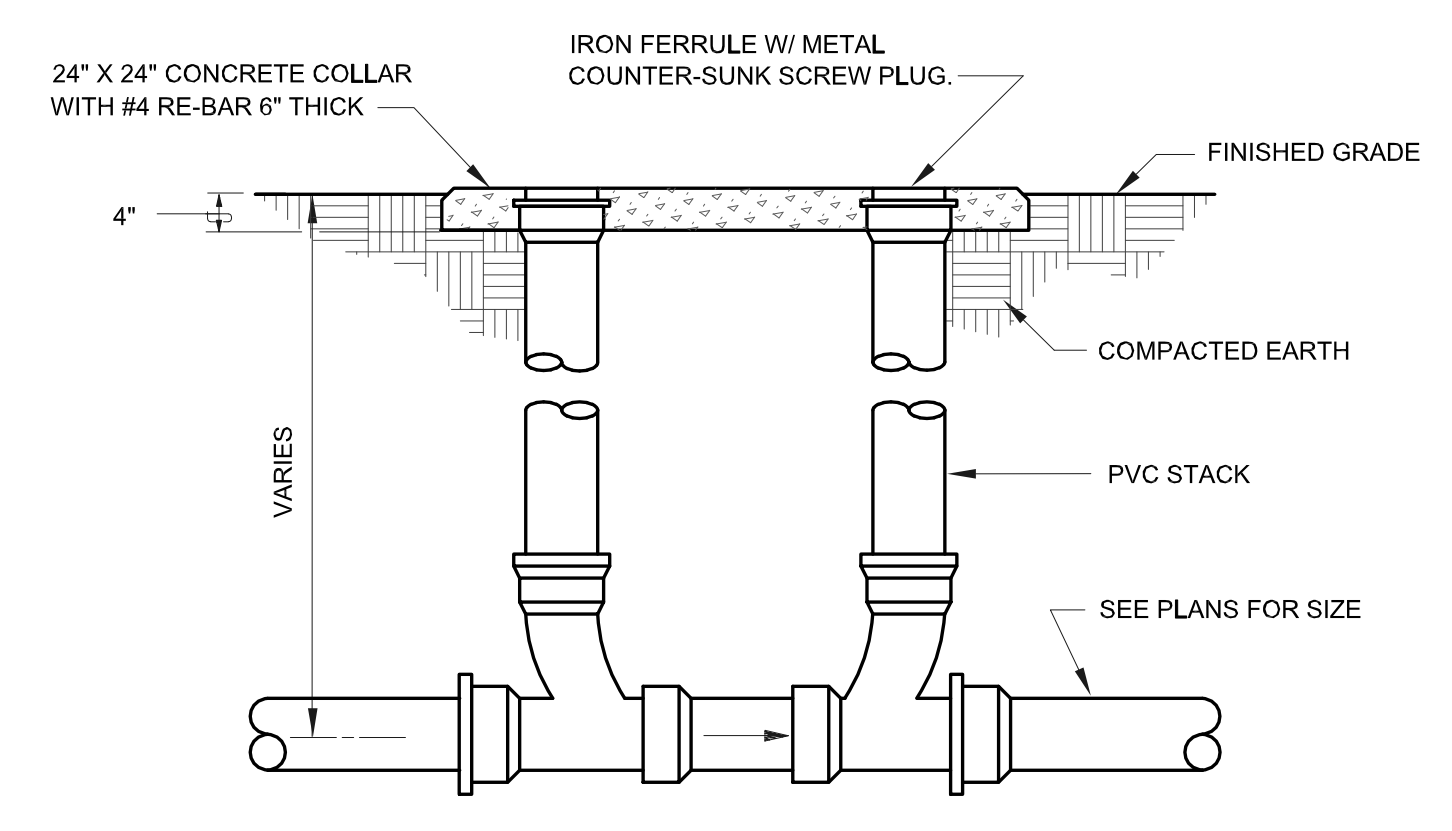
WATER HEATER PIPING SCHEMATIC
NOT TO SCALE



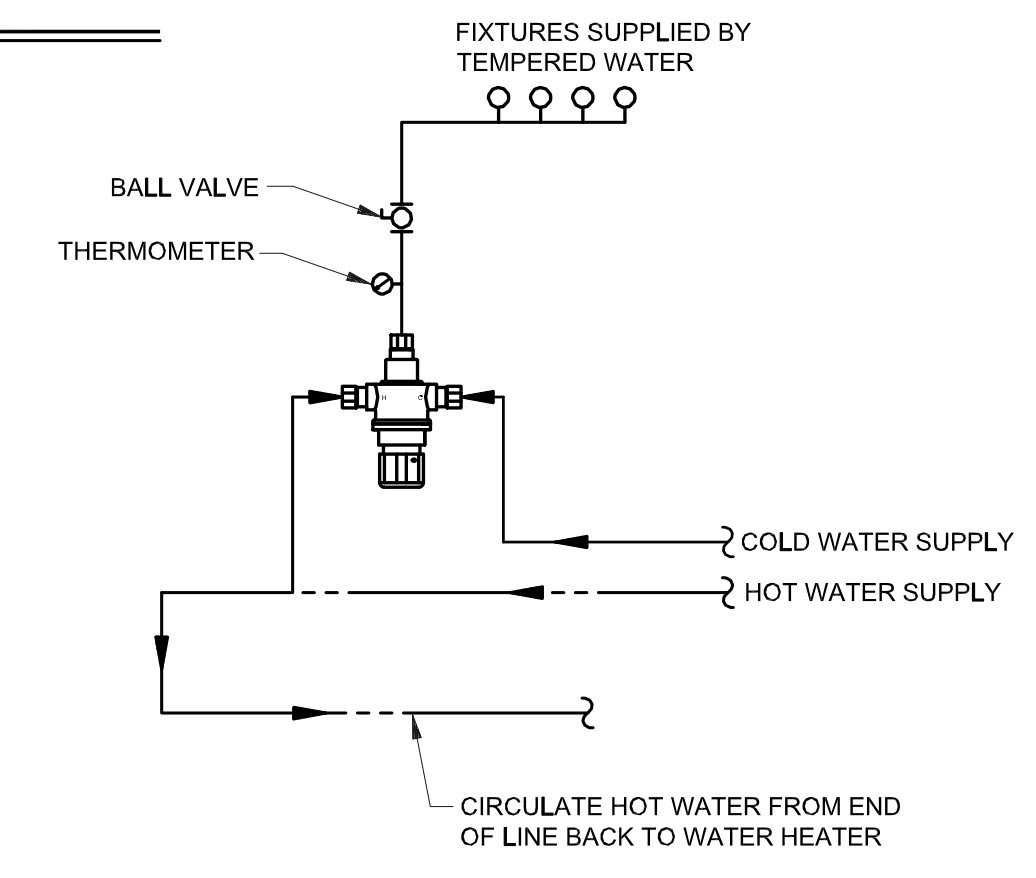
MAKE-UP AND DRAIN ASSEMBLY DETAIL
NOT TO SCALE



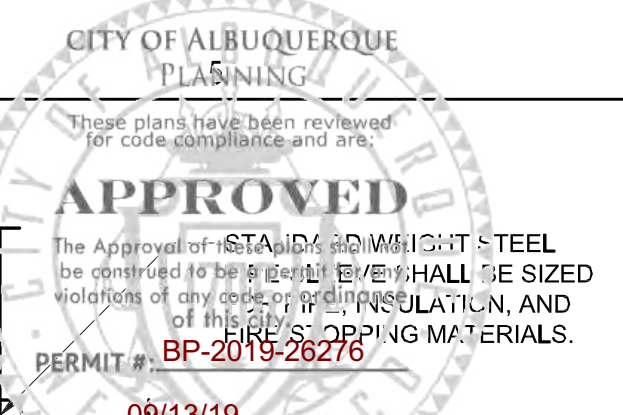
PIPE SLEEVE THRU WALL DETAIL
NOT TO SCALE



TWO-WAY CLEANOUT TO GRADE DETAIL
NOT TO SCALE



THERMOSTATIC MIXING VALVE (TMV) DETAIL
NOT TO SCALE



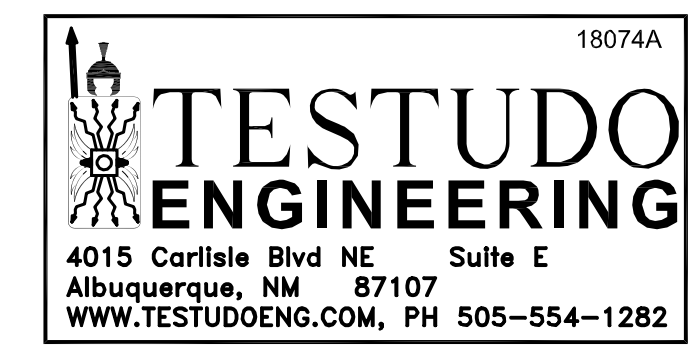
VIGIL & ASSOCIATES
ARCHITECTURAL GROUP, P.C.
4477 Irving NW, Suite A
Albuquerque, NM 87107
Ph: 505.850.5030 - Fax: 505.850.5031
www.va-architects.com



NEW MULTI-PURPOSE BUILDING
for ST TERESA CATHOLIC SCHOOL

date:	June 07, 2019
drawn by:	T. DURAN
checked by:	D. GRAHAM
file name:	18074A_P501
revisions:	

P-501a
ALTERNATE



PLUMBING DETAILS

project no. 18-007