

**ADMINISTRATIVE AMENDMENT**

**FILE # \_\_\_\_\_ PROJECT # \_\_\_\_\_**

\_\_\_\_\_

\_\_\_\_\_

\_\_\_\_\_

**APPROVED BY**

**DATE**

**EXTERIOR FINISHES**

TILT-UP CONC. PANELS- COLOR 1- LIGHT GRAY  
 COLOR 2- MEDIUM GRAY  
 COLOR 3- DARK GRAY

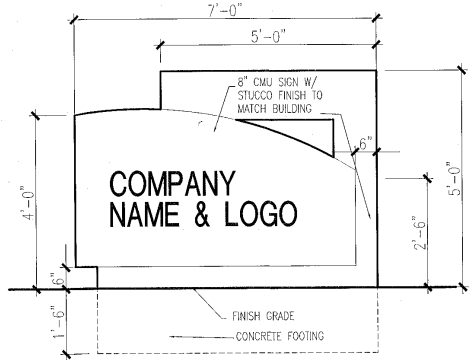
METAL ACCENT COLOR- RED  
 ALUMINUM WINDOW FRAMES- CLEAR ANODIZED  
 WINDOW GLAZING- 1" TINTED INSULATED  
 TINT COLOR- SOLAR GRAY  
 OVERHEAD & HM DOORS- LIGHT GRAY

ALL BUILDING MOUNTED SIGNAGE TO BE LIGHTED EITHER INTERNALLY OR EXTERNALLY. ANY LIGHTING FOR SIGNAGE SHALL CONFORM TO NIGHT SKIES ACT. SIGNAGE MATERIAL TO BE EITHER RAISED METAL LETTERING OR TRANSLUCENT LEXAN PANELS OF ANY COLOR.

NOTE: SIGNAGE MAY BE AMENDED PROVIDED IT COMPLIES WITH THE AIRISCO BUSINESS PARK MASTERPLAN REGULATIONS.

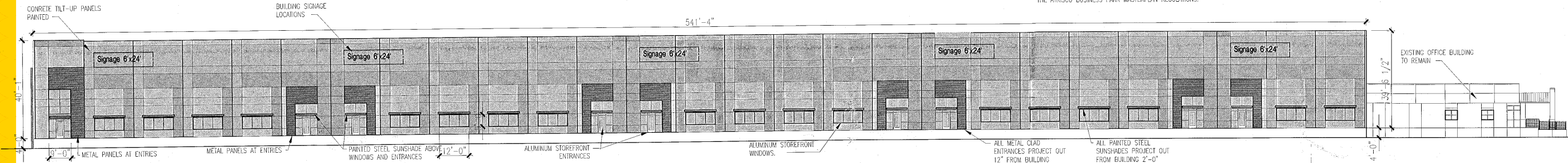
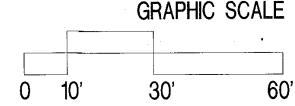
**BUILDING SIGNAGE CALCS:**

WEST ELEVATION- BLDG. AREA-2,850 S.F. SIGNAGE- 150 S.F.  
 150 / 2850 = 5%  
 EAST ELEVATION- BLDG. AREA-4,515 S.F. SIGNAGE- 366 S.F.  
 361 / 4515 = 8%  
 NORTH ELEVATION- BLDG. AREA-7,246 S.F. SIGNAGE- 334 S.F.  
 334 / 7246 = 4.6%

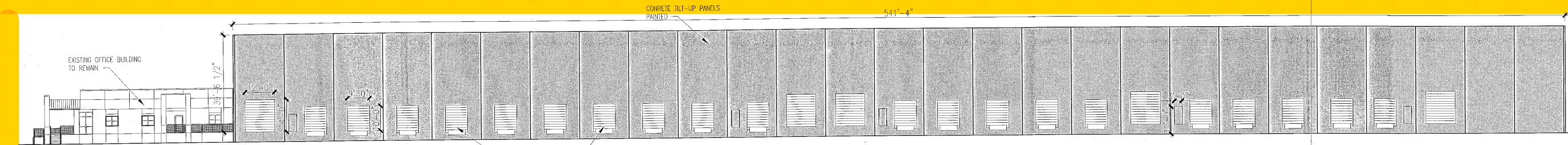


**5 MONUMENT SIGN**  
 1/2"=1'-0"

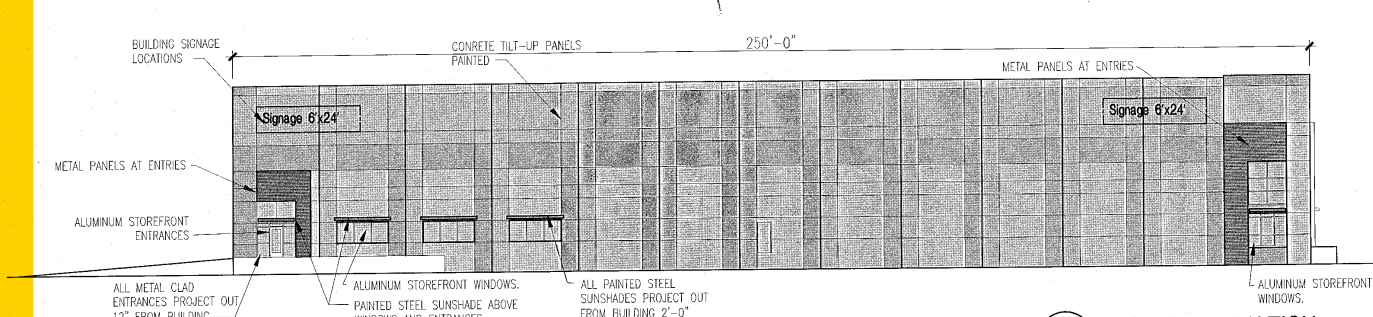
NOTE: SIGNAGE MAY BE AMENDED PROVIDED IT COMPLIES WITH THE AIRISCO BUSINESS PARK MASTERPLAN REGULATIONS.



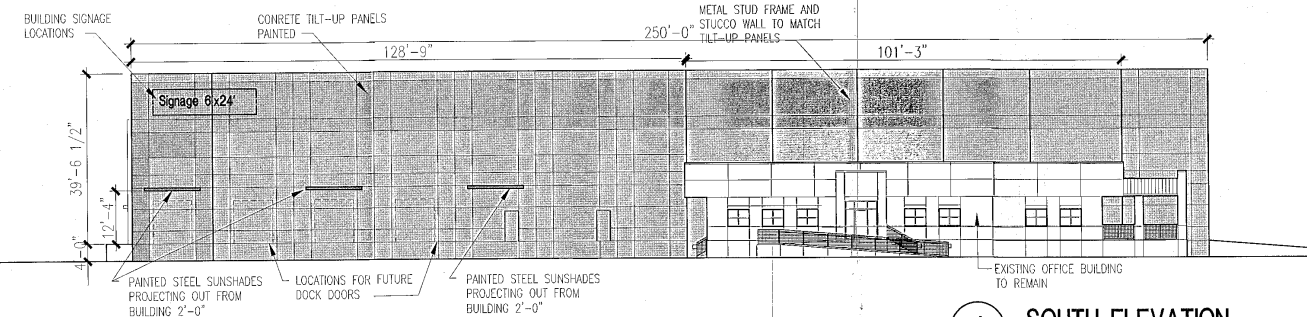
**4 WEST ELEVATION**  
 1"=20'-0"



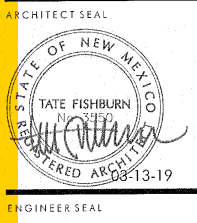
**3 EAST ELEVATION**  
 1"=20'-0"



**2 NORTH ELEVATION**  
 1"=20'-0"



**1 SOUTH ELEVATION**  
 1"=20'-0"



PROJECT

**SITE DEVELOPMENT PLAN  
 FOR BUILDING PERMIT  
 7601 LOS VOCANES ROAD NW  
 ALBUQUERQUE, NEW MEXICO**

REVISIONS

DATE March 13, 2019

SCALE 1/20"=1'-0"

DRAWING NAME ELEVATIONS

SHEET NUMBER

**SDP-2**



# Site Plan

7601 Los Volcanes RD NW  
Albuquerque NM 87120

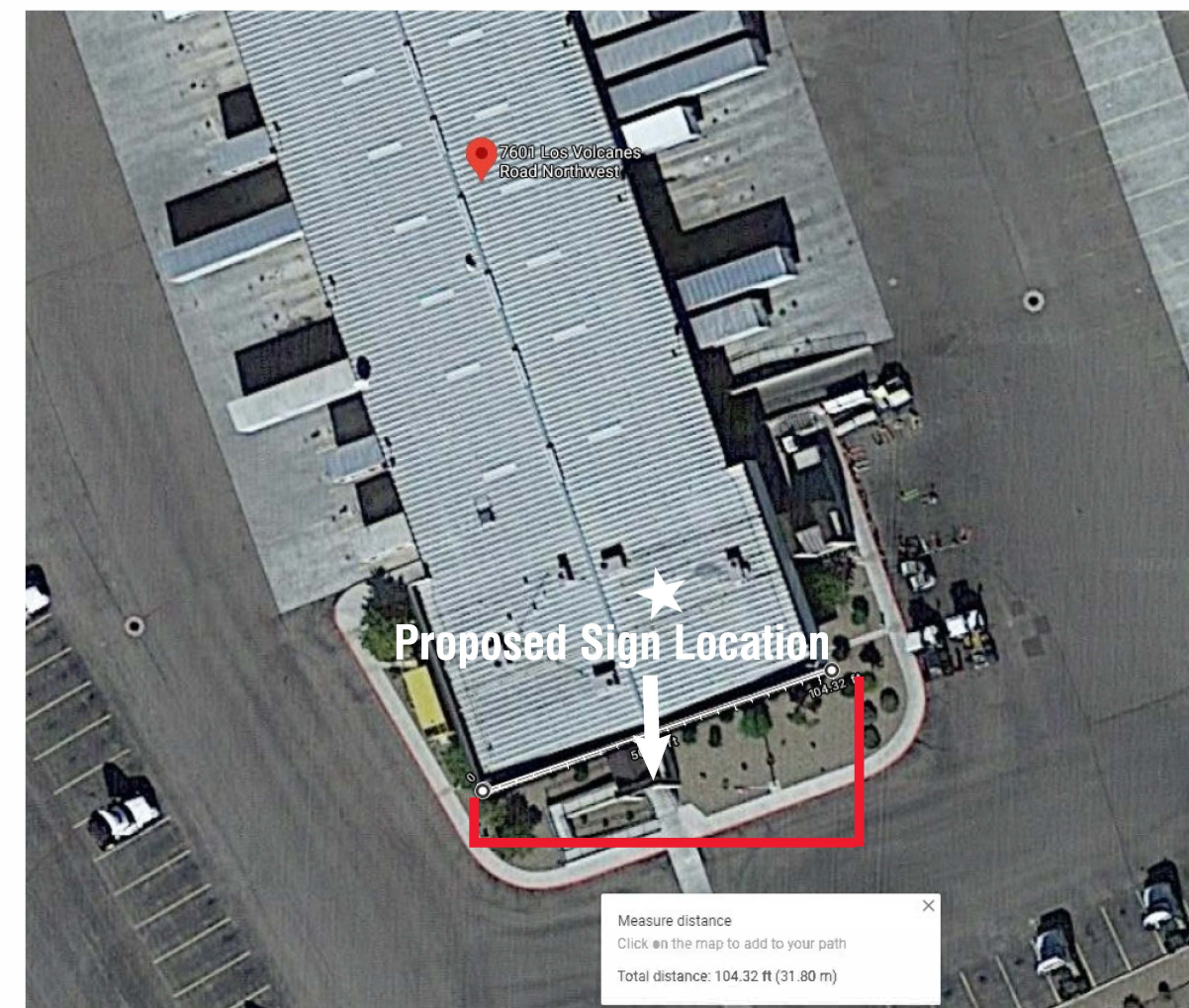




# Sign A: Non-Illuminated Dimensional Logo & Letters



Not to Scale



Lease Space, South Facade: 104.32' L x 15.75' H

## Sun Country Industries

Address: 7601 Los Volcanes RD NW, Unit C, Suite 102  
City/State: Albuquerque NM 87121  
Phone: 505-998-1951

★ See Detail Sheets A & A2

**SignPlex**<sup>™</sup>  
Indoor - Outdoor Innovations  
P:505-341-0213 F:505-341-3291



# Sign B: Exterior DiBond Signs

## West Facade



Not to Scale



★ See Detail Sheet B

### Sun Country Industries

Address: 7601 Los Volcanes RD NW, Unit C, Suite 102  
City/State: Albuquerque NM 87121  
Phone: 505-998-1951

 **SignPlex**<sup>™</sup>  
Indoor - Outdoor Innovations  
P:505-341-0213 F:505-341-3291

**Detail A - Sign A** South Facade

- A** Quantity 1: Non-illuminated, flat cut building letters
- Sign Size: 6' 4" x 2'    Sign sq/ft: 139 sq/ft
- Total Signage sq/ft: 12.83 sq/ft
- Leased Space Facade sq/ft: 104' x 44.5 = 4,628 sq/ft
- Sign is : 0.03% of the Facade

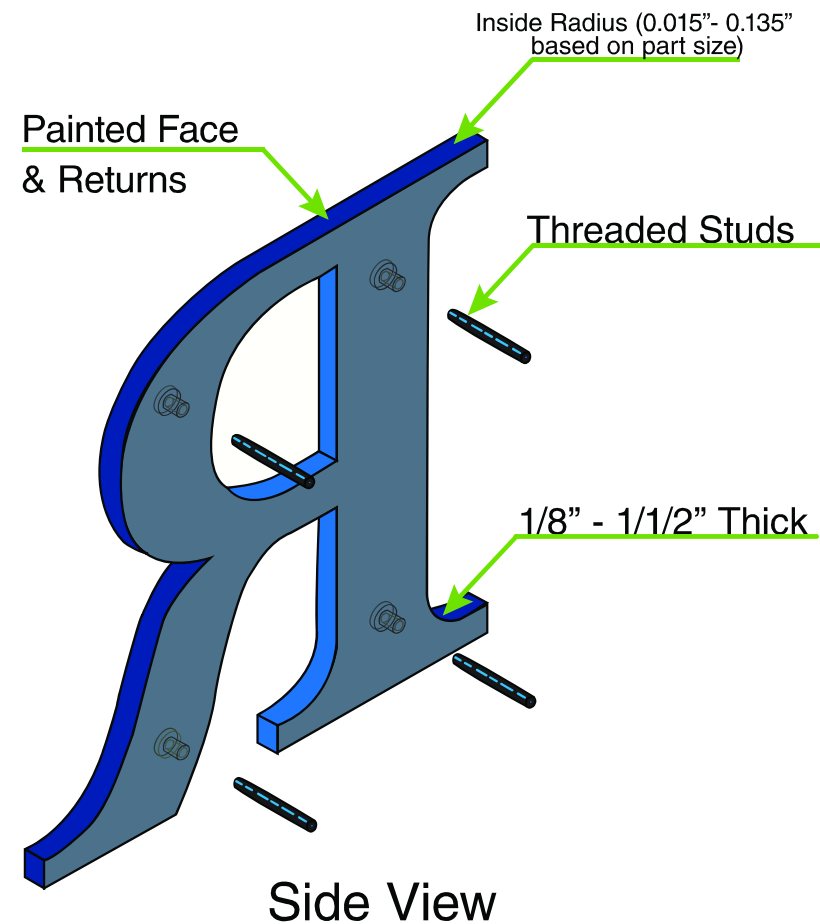
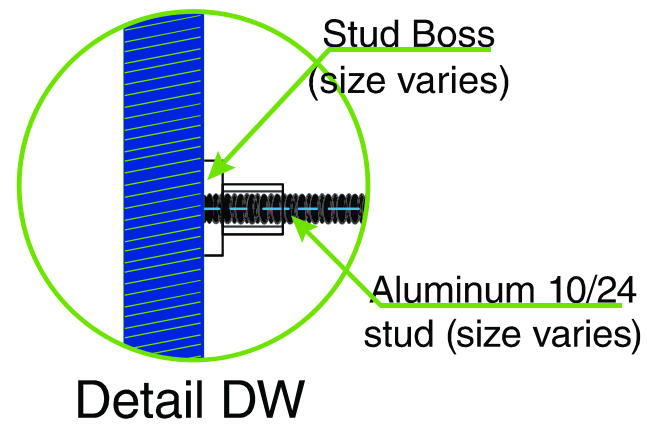
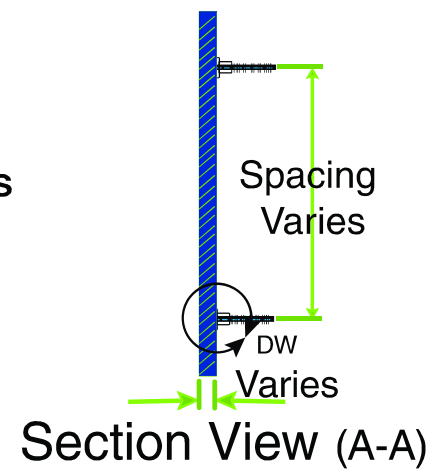
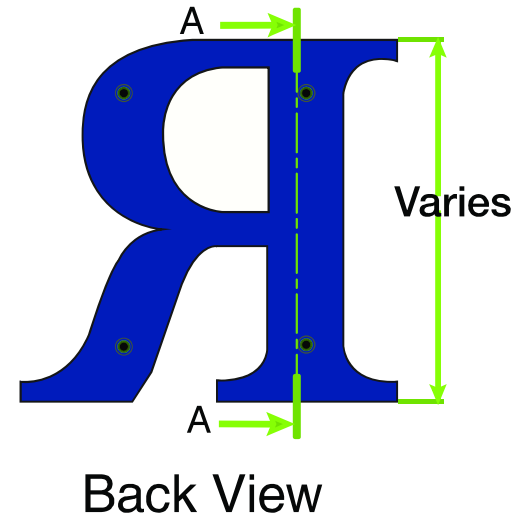


Not to Scale

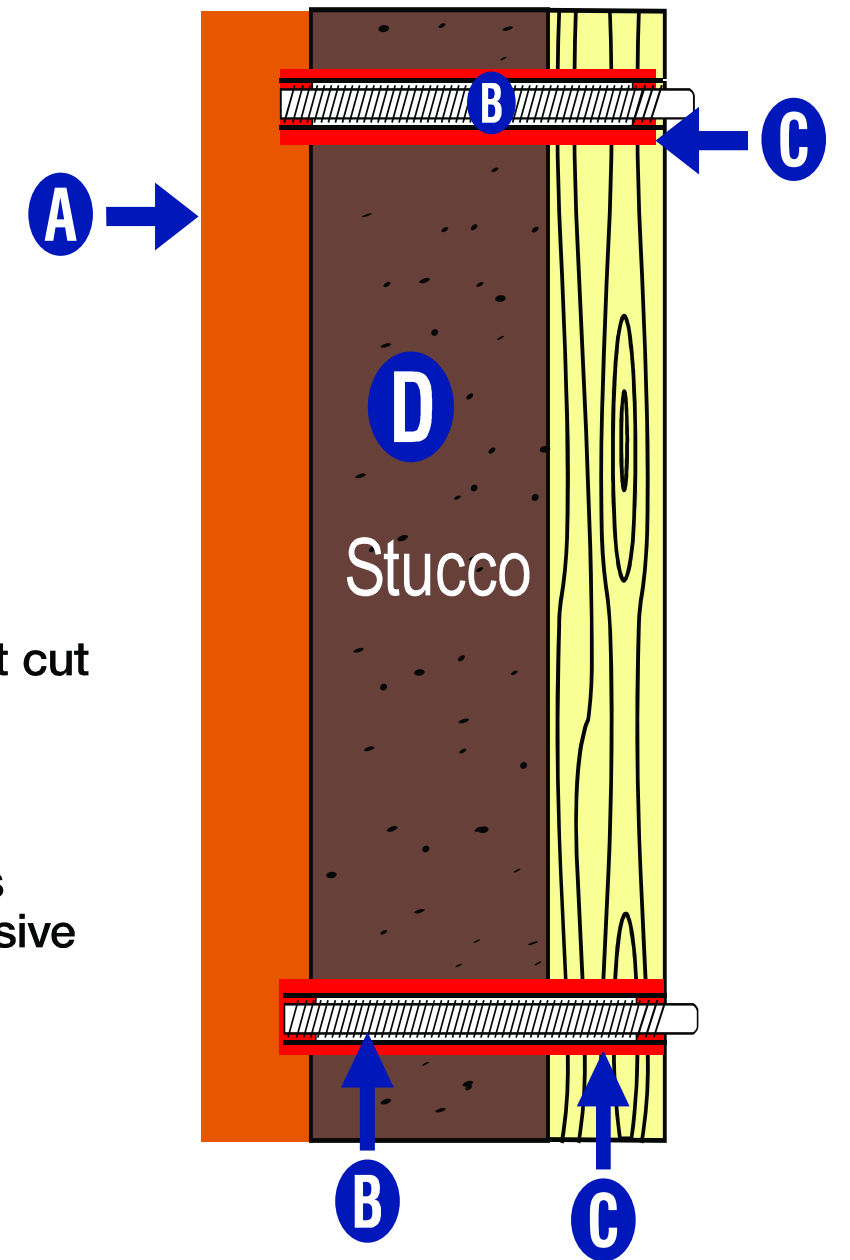
**Detail A2 - Sign A**

**South Facade**

**Acrylic Letter - Details**



**Flush/Stud Mount Side View**



- A** 3/8" Thick flat cut acrylic letters
- B** 3/16" Studs
- C** Red indicates silicone adhesive
- D** Stucco wall with plywood back

Not to Scale



7601 Los Volcanes RD NW, Unit C, Suite 102  
Albuquerque NM 87121

**Details B - Sign B** West Facade

- B** Quantity 2: Non-illuminated, printed vinyl on Dibond exterior signs.  
Sign B-1 Size: 10' x 3'      Sign sq/ft: 30 sq/ft  
Sign B-2 Size: 10' x 3'      Sign sq/ft: 30 sq/ft  
Total Signage sq/ft: 60 sq/ft  
Leased Space Facade sq/ft: 186.79' x 44.5' = 8,308 sq/ft  
Signs Are : 0.07% of the Facade

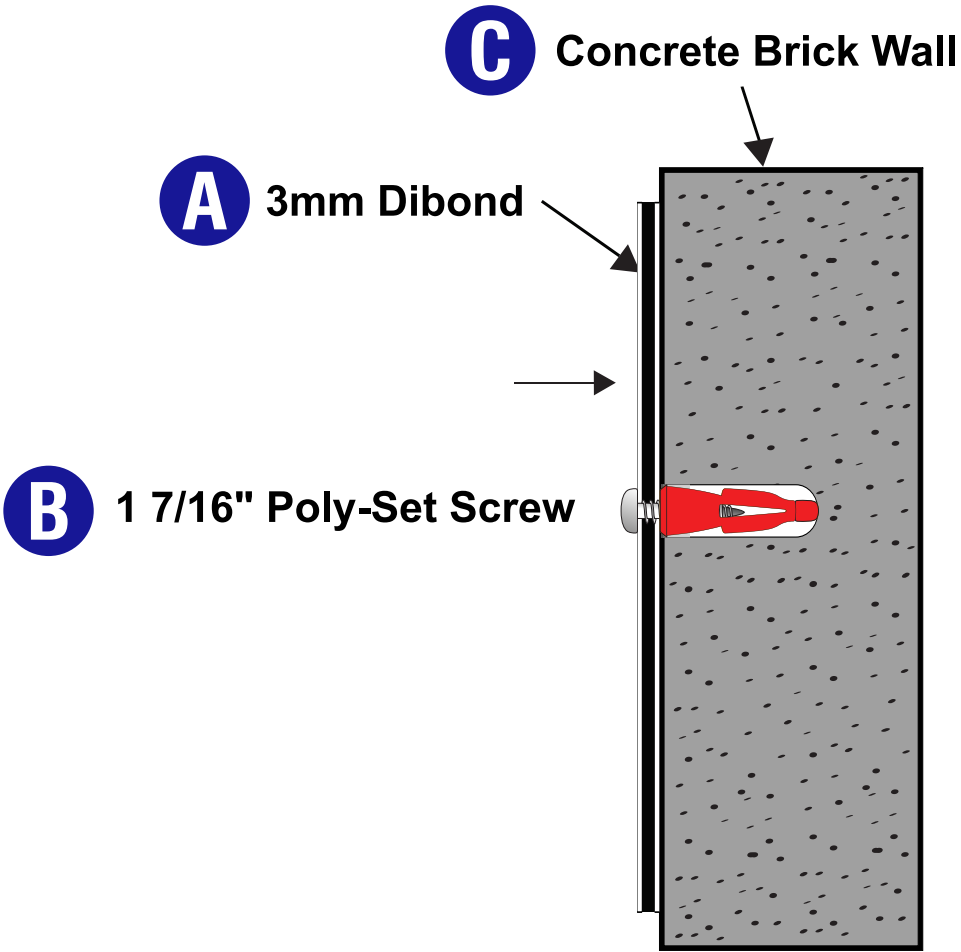


Not to Scale



**Details B2 - Sign B**

West Facade



- A** 3mm DiBond
- B** #12 1 7/16" Poly-Set Screw
- C** Concrete Brick Wall

