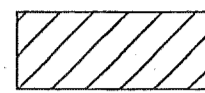


CURVE TABLE					
CURVE #	ARC LENGTH	RADIUS	DELTA ANGLE	CHORD BEARING	CHORD LENGTH
C1	375.43 (375.43)	2290.14 (2290.14)	9°23'34" (9°23'34")	S84°15'38"W (S84°14'29"W)	375.01 (375.01)
C2	284.48 (284.55)	2265.64 (2265.64)	7°11'39" (7°11'46")	S84°30'26"W (S84°30'32"W)	284.29 (284.36)
C3	41.70	2265.64	1°03'16"	S87°34'38"W	41.70
C4	41.82	2265.64	1°03'28"	S86°31'16"W	41.82
C5	41.61	2265.64	1°03'08"	S85°27'58"W	41.61
C6	41.61	2265.64	1°03'08"	S84°24'50"W	41.61
C7	40.47	2265.64	1°01'25"	S83°22'33"W	40.47
C8	42.64	2265.64	1°04'42"	S82°19'30"W	42.64
C9	34.63	2265.64	0°52'33"	S81°20'53"W	34.63
C10	41.85 (41.84)	25.00 (25.00)	95°54'28" (95°52'50")	S32°57'23"W (S32°57'03"W)	37.13 (37.12)

LINE TABLE		
LINE #	BEARING	DISTANCE
L1	S14°59'52"E	5.16
L2	N83°23'50"E	12.13

LEGEND

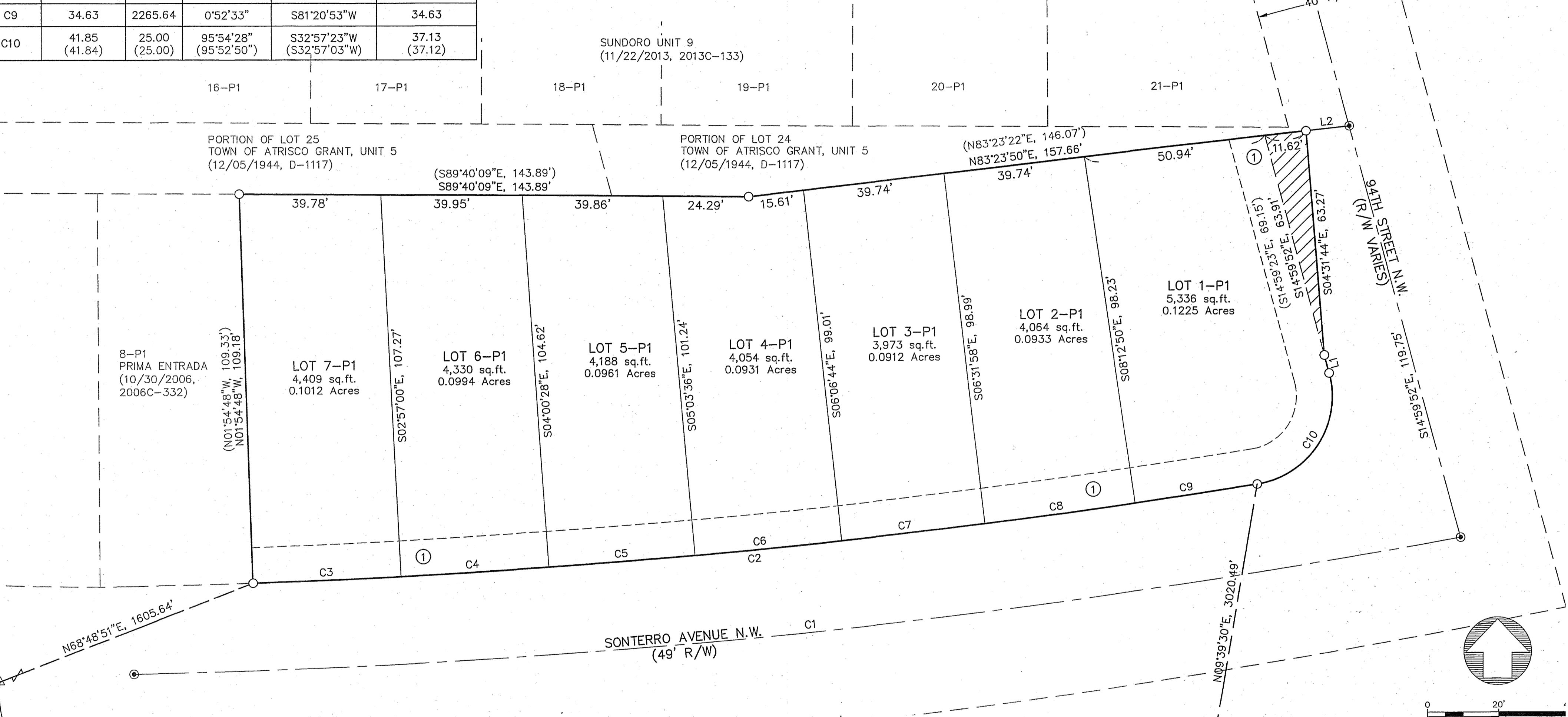
- ⊙ = FOUND CENTERLINE MONUMENT UNLESS NOTED OTHERWISE.
- △ = FOUND ACS MONUMENT AS NOTED
- = SET PROPERTY CORNER
- = EXISTING EASEMENT LINE
- (N00°00'00"E, 00.00') = RECORD BEARING & DISTANCE
- N00°00'00"E, 00.00' = MEASURED BEARING & DISTANCE



VACATED PORTION OF
94th STREET
BY THIS PLAT
AREA=397 SQ.FT.
DRB DETERMINATIONS WERE APPROVED
FOR THE EXISTING RIGHT OF WAY WIDTH
OF 94TH STREET AND THE EXISTING SIDEWALK
WIDTH ALONG 94TH STREET. - DRB#2019-001948

PLAT OF LOTS 1-P1 THRU 7-P1
PRIMA ENTRADA
WITHIN THE
TOWN OF ATRISCO GRANT
PROJECTED SECTION 16
TOWNSHIP 10 NORTH, RANGE 2 EAST, N.M.P
CITY OF ALBUQUERQUE,
BERNALILLO COUNTY, NEW MEXICO
JANUARY 2022

DOCH 2022064825
07/11/2022 12:28 PM Page: 2 of 2
PLAT #: 325.00 B: 2022C P: 0067 Linda Stover, Bernalillo County

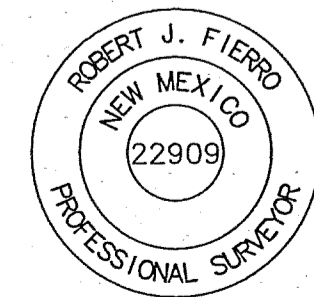


USC&GS MONUMENT "REWARD"
NM STATE PLANE COORDINATES (CENTRAL ZONE)
PUBLISHED DATA IN NAD 1983
Y=1487364.063 U.S. SURVEY FEET
X=1491190.819 U.S. SURVEY FEET
DELTA ALPHA= -0°17'12.26"
GROUND TO GRID FACTOR= 0.999675005
PUBLISHED DATA IN NAVD 1988
ELEVATION= 5319.688 U.S. SURVEY FEET

EXISTING EASEMENTS:

- ① 10-FOOT PUBLIC UTILITY EASEMENT
FILED: OCTOBER 30, 2006, IN BOOK 2006C, PAGE 332.

ACS MONUMENT "8-K9"
NM STATE PLANE COORDINATES (CENTRAL ZONE)
PUBLISHED DATA IN NAD 1983
Y=1484994.639 U.S. SURVEY FEET
X=1492463.769 U.S. SURVEY FEET
DELTA ALPHA= -0°17'03.21"
GROUND TO GRID FACTOR= 0.999677891
PUBLISHED DATA IN NAVD 1988
ELEVATION= 5250.166 U.S. SURVEY FEET



Fierro & Company
ENGINEERING | SURVEYING
6300 MONTANO ROAD, NW, SUITE C
ALBUQUERQUE, NM 87120
PH 505.352.8930
www.fierrocompany.com