

HOPE CHRISTIAN HIGH SCHOOL  
30' - 1"

HOPE  
55' - 3"

6800  
A

1 ENTRY SIGN (CANOPY MOUNTED)  
1/4" = 1'-0"

SIGN AREA: 31 SF

2 PAINTED WALL GRAPHIC  
3/16" = 1'-0"

SIGN AREA: 700 SF

3 ADDRESS SIGN (WALL MOUNTED)  
1/4" = 1'-0"

APPLICABLE SIGN RESTRICTIONS:

PER IDO 14-16-5-12(F)(2):

WALL SIGN:

NUMBER, MAXIMUM: N/A

AREA, MAXIMUM: SHALL NOT EXCEED 10% OF FACADE AREA

LOCATION: WHERE THERE IS NO SIDE SETBACK BETWEEN 2 ESTABLISHMENT FRONTAGES IN THE SAME OR ABUTTING BUILDINGS, NO WALL SIGN MAY EXTEND CLOSER THAN 2 FEET TO THE SHARED EDGE OF THE FRONTAGE.

CANOPY SIGN:

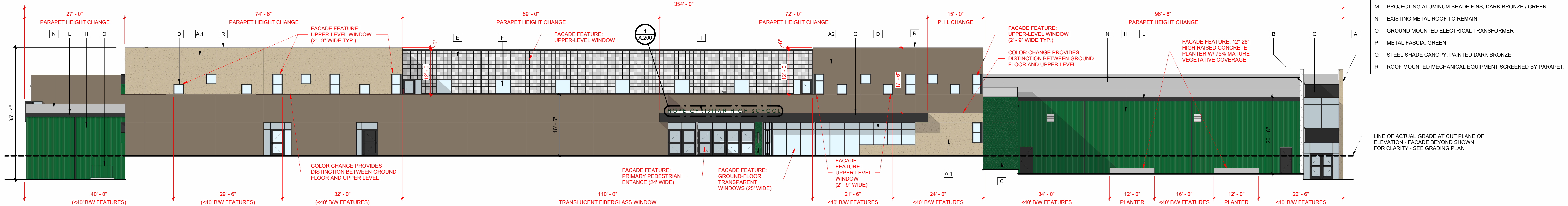
NUMBER, MAXIMUM: 1 / ESTABLISHMENT FRONTAGE

WIDTH, MAXIMUM: 50% OF BUILDING FRONTAGE WIDTH

HEIGHT OF MESSAGE SURFACE, MAXIMUM: LETTERS AND IMAGES MUST BE LOCATED ON VERTICAL SURFACES, WHICH MAY NOT EXCEED 18 IN. HEIGHT.

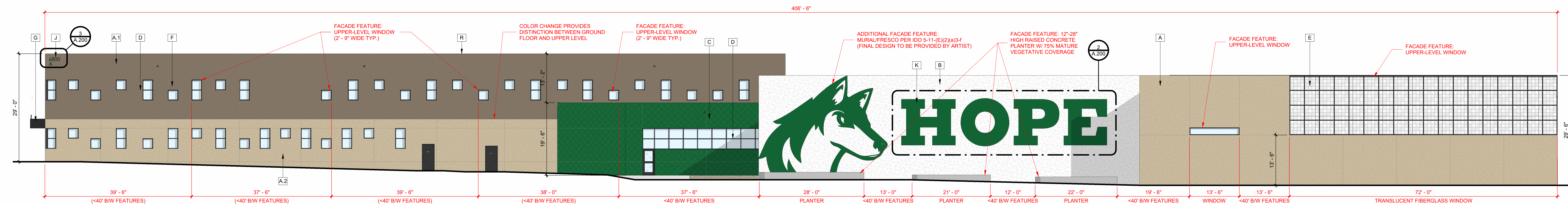
LEGEND:

- A.1 STUCCO, COLOR TO MATCH EL REY "COTTONWOOD"
- A.2 STUCCO, COLOR TO MATCH EL REY "ADOBE"
- B STUCCO, COLOR WHITE
- C STUCCO, COLOR TO MATCH DUNN EDWARDS "LATER GATOR" DE 5678
- D ALUMINUM STOREFRONT WINDOW FRAMING, DARK BRONZE
- E TRANSLUCENT FIBERGLASS GLAZING SYSTEM
- F CLEAR INSULATED GLAZING
- G METAL FASCIA, DARK BRONZE
- H EXISTING METAL SIDING TO BE PAINTED GREEN
- I ENTRY SIGN, CAST ALUMINUM LETTERS, GREEN
- J ADDRESS SIGN, CAST ALUMINUM LETTERS, GREEN
- K PAINTED WALL GRAPHIC, GREEN
- L GUTTER AND DOWNSPOUTS, DARK BRONZE
- M PROJECTING ALUMINUM SHADE FINIS, DARK BRONZE / GREEN
- N EXISTING METAL ROOF TO REMAIN
- O GROUND MOUNTED ELECTRICAL TRANSFORMER
- P METAL FASCIA, GREEN
- Q STEEL SHADE CANOPY, PAINTED DARK BRONZE
- R ROOF MOUNTED MECHANICAL EQUIPMENT SCREENED BY PARAPET.



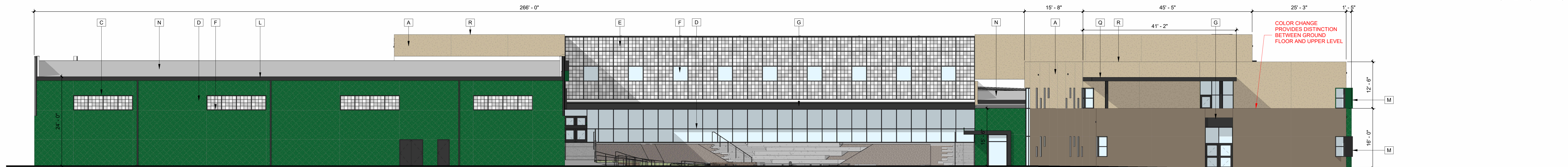
EAST ELEVATION STREET FRONTAGE ON LOUISIANA BLVD NE - CUMULATIVE WIDTH OF FACADE FEATURE ELEMENTS = 57% OF OVERALL FACADE LENGTH (MIN. 30% REQUIRED)

3/32" = 1'-0"



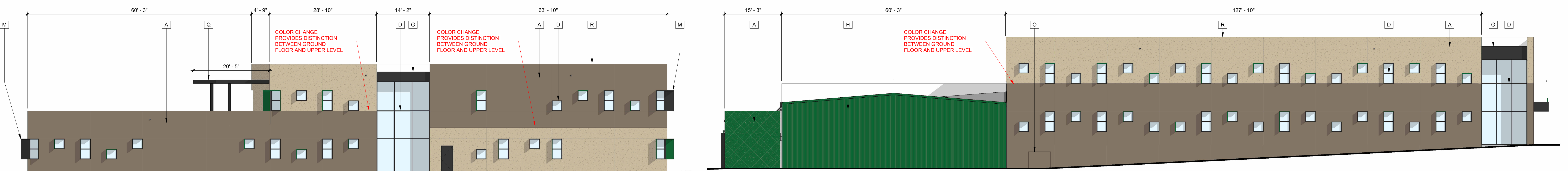
NORTH ELEVATION STREET FRONTAGE ON PALOMAS AVE NE - CUMULATIVE WIDTH OF FACADE FEATURE ELEMENTS = 56% OF OVERALL FACADE LENGTH (MIN. 30% REQUIRED)

3/32" = 1'-0"



WEST ELEVATION (NO STREET FRONTAGE THEREFORE IDO 5-11-(E)(2)(a)2 & 5-11-(E)(2)(a)3 DO NOT APPLY)

3/32" = 1'-0"



SOUTH ELEVATION (NO STREET FRONTAGE THEREFORE IDO 5-11-(E)(2)(a)2 & 5-11-(E)(2)(a)3 DO NOT APPLY)

3/32" = 1'-0"



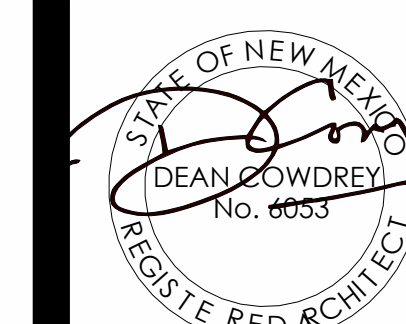
HOPE CHRISTIAN HIGH SCHOOL  
6800 PALOMAS AVE. NE, ALBUQUERQUE, NM 87109

REVISION SCHEDULE

#	Date	Description
1	05.31.24	DFT SITE PLAN APPLICATION

100% CD

05.31.24



BUILDING ELEVATIONS - ALL PHASES

A.200