

ADMINISTRATIVE AMENDMENT

FILE #: _____ PROJECT #: _____

APPROVED BY

DATE

PROJECT DATA

ZONING: (MX-4) MIXED USE - MODERATE INTENSITY ZONE DISTRICT (UC-MS-PT) PREMIUM TRANSIT AREA

LEGAL DESCRIPTION: TRACT A, NUEVO ATRISCO (BEING A REPLAT OF TRACT B1, WEST ROUTE 66 ADDITION II AS RECORDED IN OCTOBER 2018) SITUATE WITHIN THE TOWN OF ATRISCO GRANT IN PROJECTED SECTION 22 TOWNSHIP 10 NORTH, RANGE 2 EAST, NEW MEXICO PRINCIPAL MERIDIAN, CITY OF ALBUQUERQUE, BERNALILLO COUNTY, NEW MEXICO, PREVIOUSLY TRACT B1, WEST ROUTE 66 ADDITION II AS THE SAME IS SHOWN AND DESIGNATED ON THE PLAT ENTITLED "WEST ROUTE 66 ADDITION II, BEING A REPLAT OF TRACT B OF WEST ROUTE 66 ADDITION AS RECORDED ON AUGUST 12, 2013 IN BOOK 2013C, PAGE 91 AND LOT 1 OF UNIV HOSPITALS CLINIC AS RECORDED ON JANUARY 22, 2009 IN BOOK 2009C, PAGE 18, SITUATE WITHIN PROJECTED SECTION 22, T.10N., R.2E., N.M.P.M., TOWN OF ATRISCO LAND GRANT, CITY OF ALBUQUERQUE, BERNALILLO COUNTY, NEW MEXICO, DATE OF SURVEY: SEPTEMBER 2016, FILED IN THE OFFICE OF THE COUNTY CLERK OF BERNALILLO COUNTY, NEW MEXICO, ON DECEMBER 9, 2016, IN PLAT BOOK 2016C, PAGE 151.

SITE AREA: 3.0858 ACRES (134,460 SF)

USABLE OPEN SPACE: (TABLE 5-1-2) 1BR: 201 SQ. FT./UNIT = 27 X 200 = 5,400 SQ. FT. 2BR: 250 SQ. FT./UNIT = 42 X 250 = 10,500 SQ. FT. 3BR: 300 SQ. FT./UNIT = 17 X 300 = 5,100 SQ. FT. TOTAL = 21,000 SQ. FT. UC-MS-PT: 50% REDUCTION = 10,500 SQ. FT. PROVIDED COURTYARD OPENSOURCE = 12,670 SQ. FT. PROVIDED ROOFTOP PATIO OPENSOURCE = 1,957 SQ. FT. PROVIDED TOTAL = 14,627 SQ. FT. PROVIDED

BUILDING HEIGHT: (TABLE 5-1-2: MIXED-USE ZONE DISTRICT DIMENSIONAL STANDARDS) UC-MS-PT: 65FT MAXIMUM HEIGHT PLUS 12' WORKFORCE HOUSING BONUS = 77FT MAXIMUM HEIGHT

PARKING CALCULATION: (TABLE 5-5-1) DWELLING UNITS, MULTI-FAMILY UC-MS-PT: 1 SPACE / DU = 80 SPACES 80 UNITS X 1 SPACE/UNIT = 80 SPACES 6 LIVE/WORK UNITS X 1 SPACE/UNIT = 6 SPACES RESIDENTIAL SPACES REQUIRED = 86 SPACES RESIDENTIAL SPACES PROVIDED = 98 SPACES (INCLUDES 4 ACCESSIBLE SPACES PER 5-C(7)(A))

BICYCLE PARKING MFA 2018: PARKING FOR BICYCLES SHALL BE PROVIDED AT A RATIO OF .5 BICYCLE PARKING SPACE PER UNIT = 43 SPACES REQUIRED LEED: LONG-TERM BICYCLE STORAGE CAPACITY REQUIRED = 56 SPACES COVERED AND 5 SHORT TERM COVERED SPACES PROVIDED BICYCLE SPACES = 90 (80 ARE LOCATED IN AN INDOOR BICYCLE STORAGE ROOM, AND 10 ARE LOCATED OUTDOORS)

DEMOLITION NOTES

- A. EXISTING PAVEMENT, ASPHALT CURB, AND LIGHT POLES WITHIN THIS PROJECT WORK AREA TO BE DEMOLISHED. B. CONTRACTOR SHALL OBTAIN AN UNDERSTANDING OF EXISTING CONDITIONS BOTH ON SITE AND ADJACENT TO THE SITE. C. CONTRACTOR SHALL BE RESPONSIBLE FOR PROVIDING SAFETY MEASURES TO PROTECT PEDESTRIANS, VEHICLES, AND ALL EXISTING IMPROVEMENTS TO REMAIN. D. DEMOLITION ITEMS MUST BE FIELD VERIFIED WITH OWNER. E. CONTRACTOR TO VERIFY THE LOCATIONS OF EXISTING UTILITIES AND ASSOCIATED EQUIPMENT BEFORE EXCAVATION. F. UTILITIES SCHEDULED FOR DEMOLITION SHALL BE CAPPED OFF AS CLOSE TO THE SOURCE AS POSSIBLE AND COMPLETELY REMOVED. UTILITY DEMOLITION IS TO BE COMPLETE INSIDE THE LIMITS OF WORK AND INCLUDES, BUT IS NOT LIMITED TO: CONDUIT, PIPE, WIRES, ANCHORS AND TIES. G. DEMOLITION MATERIALS ARE TO BE REMOVED TO A LEGAL WASTE FACILITY. CONTRACTOR IS RESPONSIBLE FOR SUPPLYING REFUSE CONTAINERS TO HANDLE DEBRIS TO BE REMOVED, AS WELL AS PROVIDING FEES ASSOCIATED WITH REMOVAL AND DISPOSAL OF DEBRIS. H. EXISTING UTILITY STUBS THAT REMAIN SHALL BE DOCUMENTED ON SURVEYED AS-BUILT DRAWINGS THAT SHALL BE TURNED OVER TO THE OWNER AT CONTRACT CLOSE OUT.

GENERAL SHEET NOTES

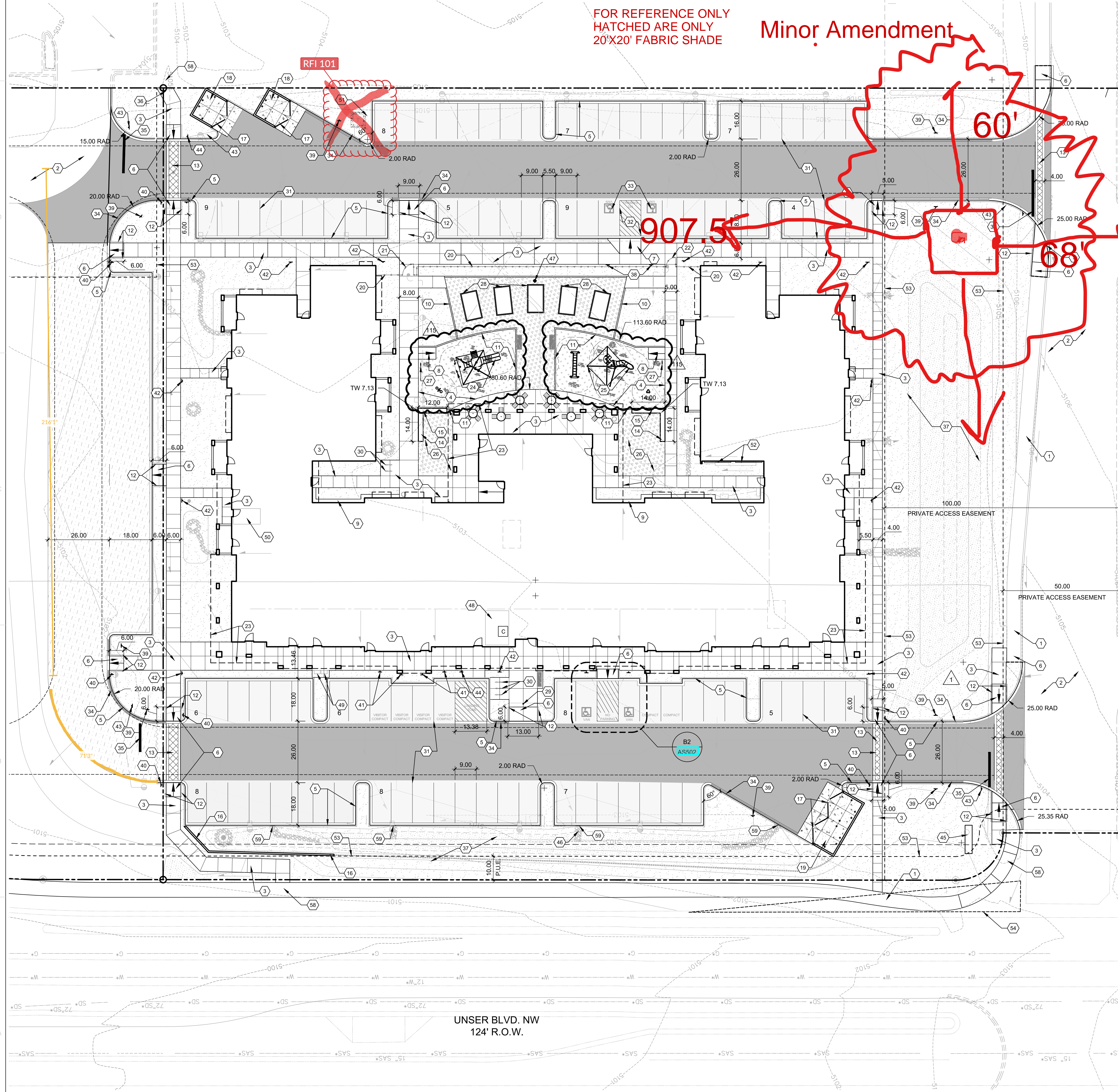
- A. SOLID WASTE COLLECTION IS THE RESPONSIBILITY OF THE CITY OF ALBUQUERQUE SOLID WASTE DEPARTMENT. B. THE SITE SHALL COMPLY WITH THE INTERNATIONAL FIRE CODE (IFC) 2009. C. THE FIRE DEPARTMENT ACCESS SHALL NOT BE LESS THAN 20' THROUGHOUT THE COMPLEX. D. THE SITE SHALL HAVE A WATER SUPPLY THAT MEETS FIRE FLOW AND HAVE A DISTANCE TO THE NEAREST HYDRANT TO MEET IFC REQUIREMENTS. E. ALL FIRE DEPARTMENT ACCESS SHALL HAVE A GRADE NO GREATER THAN 10%. F. THE SITE SHALL MEET ALL DEAD END REQUIREMENTS AS PER IFC OR PROVIDE EMERGENCY TURN-AROUND PER IFC. G. CONTRACTOR IS TO VERIFY ALL EXISTING UTILITY LOCATIONS BEFORE EXCAVATION. H. CONTRACTOR TO COORDINATE WITH OWNER FOR ALLOWABLE STAGING AREAS DURING CONSTRUCTION. I. UTILITIES AND ASSOCIATED EQUIPMENT SHOWN FOR REFERENCE ONLY. CONTRACTOR TO COORDINATE LOCATION AND INSTALLATION. SEE CIVIL AND ELECTRICAL DRAWINGS. J. ALL SITE PLAN DIMENSIONS ARE IN DECIMAL UNITS. K. SEE CIVIL SITE GRADING PLAN FOR INFORMATION ON DRAINAGE CURB CUTS AND DETENTION AREAS. L. THE GRADES INDICATED ON THE PLANS ARE FINISHED GRADES UNLESS OTHERWISE INDICATED. THE CONTRACTOR IS RESPONSIBLE FOR SETTING SUBGRADES TO ACCOMMODATE PROPOSED IMPROVEMENTS AS INDICATED ON THE PLANS INCLUDING, BUT NOT LIMITED TO PLAYGROUND EQUIPMENT AND FOOTINGS, AND PLAYGROUND PROTECTIVE SURFACING. M. DIMENSIONS ARE TO FACE OF CURB, OR WALL, OR EDGE OF PAVEMENT UNLESS OTHERWISE NOTED. N. SITE PLAN SHALL COMPLY WITH LOCAL, FEDERAL, ADA STANDARDS & GUIDELINES O. CURBS AND ACCESSIBLE RAMPS WILL BE DESIGNED AND BUILT ACCORDING TO CITY OF ALBUQUERQUE STANDARDS P. LIGHT FIXTURES AND LIGHTING DESIGN SHALL COMPLY WITH THE CITY OF ALBUQUERQUE INTEGRATED DESIGN ORDINANCE (IDO); SECTION 14-16-5-8 OUTDOOR LIGHTING Q. STREETS, PARKING SPACES AND ASSOCIATED DRIVES TO BE ASPHALT UNLESS NOTED OTHERWISE R. PARKING SPACES AT 9'-0" X 18'-0" UNLESS NOTED OTHERWISE S. PROVIDE EXPANSION JOINTS ALONG BUILDING FACE WITH POURABLE SEALANT, TYP SIDEWALK JOINTS SHALL FOLLOW PATTERN AS SHOWN ON SITE PLAN. U. BUILDING AND FREESTANDING SIGNAGE TO BE SUBMITTED UNDER A SEPARATE SIGN PERMIT AS PER THE UNDERLYING ZONING. V. THIS REFUSE HAS BEEN DESIGNED TO COMPLY WITH SELECT LEED FOR HOMES V4 CREDITS. CONTRACTOR SHALL HOLD THESE REQUIREMENTS PARAMOUNT WHEN CONSIDERING FIELD CHANGES AND/OR SUBSTITUTION REQUESTS.

SHEET KEYED NOTES

- 1 EXISTING CONCRETE WALK TO REMAIN 2 EXISTING ASPHALT TO REMAIN 3 CONCRETE SIDEWALK SEE A1/AS501 4 TURNDOWN SIDEWALK AT PLAY AREA SEE B3/AS501 5 CONCRETE CURB AND GUTTER SEE A3/AS501 6 CONCRETE CURB RAMP TYPE A SEE B5/AS501 7 CONCRETE CURB RAMP TYPE B SEE B6/AS501 8 CONCRETE RAMP AT PLAY AREA SEE B2/AS501 9 CONCRETE BUILDING APRON SEE A5/AS501 10 CONCRETE MOW CURB SEE B4/AS501 11 DEEP CONCRETE MOW CURB AT PLAY AREA SEE B1/AS501 12 CONCRETE HEADS & CURB SEE D4/AS501 13 CONCRETE CROSSWALK SEE D5/AS501 14 CONCRETE SEATWALL SEE C3 & C4/AS501 15 CONCRETE SEATWALL SEE C2 & C4/AS501 16 CONCRETE RETAINING WALL SEE E3/AS501 17 REFUSE ENCLOSURE GATE SEE D2 & D3/AS502 18 SINGLE REFUSE AND RECYCLING ENCLOSURE PER MFA REQ. SEE D2/AS502 19 DOUBLE REFUSE AND RECYCLING ENCLOSURE PER MFA REQ. SEE D2/AS502 20 6" TALL ORNAMENTAL WIRE FENCE SEE C5/AS501 21 8" TALL ORNAMENTAL WIRE GATE A SEE C6/AS501 22 8" TALL ORNAMENTAL WIRE GATE B SEE D6/AS501 23 OVERHEAD BUILDING CANOPY SEE ARCHITECTURAL 24 AGE 2-5 RECREATIONAL PLAY AREA SEE SPECIFICATIONS 25 AGE 6-12 RECREATIONAL PLAY AREA SEE SPECIFICATIONS 26 AGE 12+ GATHERING AREA 27 AGE APPROPRIATE PLAY AREA RULES SIGN 28 RAISED GARDEN PLANTER SEE E2 & E3/AS502 29 PIPE BOLLARD SEE A1/AS502 AND SPECIFICATIONS 30 BICYCLE RACK SEE A3/AS502 31 PARKING LOT STRIPING SEE B2/AS502 32 ACCESSIBLE PARKING STRIPING SEE B2/AS502 33 ACCESSIBLE PAVEMENT MARKING SEE B1/AS502 34 FIRELANE STRIPING SEE C2/AS502 35 STOP LINE PAVEMENT STRIPING 36 MAINTAIN EXISTING ACCESS FROM ADJACENT PROPERTY 37 STORMWATER DETENTION AREA SEE CIVIL 38 ACCESSIBLE VAN PARKING SIGN SEE C1/AS502 39 FIRELANE SIGN SEE C2/AS502 40 PEDESTRIAN CROSSING SIGN SEE C1/AS502 41 VISITOR PARKING ONLY SIGN SEE C1/AS502 42 NO SMOKING SIGN SEE C1/AS502 43 STOP SIGN SEE C1/AS502 44 LOADING ZONE, NO PARKING SIGN SEE C1/AS502 45 MONUMENT SIGN BY OTHERS SEE E4/AS502 FOR FOUNDATION. MONUMENT SIGN PROVIDED FOR ENTIRE DEVELOPMENT INCLUDING ALL FUTURE PHASES 46 IRRIGATION P.O.C. WITH 1 1/2" STUB-OUT AND SUBMETER, SEE CIVIL AND IRRIGATION SPECS 47 FROST FREE HOSE BIB SEE CIVIL AND MECHANICAL 48 RESIDENTIAL MAIL BOX LOCATION, SEE ARCH 49 LIVE/WORK MAILBOX LOCATION, OWNER PROVIDED 50 FIRE RISER ROOM AND BACKFLOW PREVENTER LOCATION, SEE CIVIL AND MECHANICAL 51 ELECTRICAL EQUIPMENT, SEE ELECTRICAL 52 ELECTRICAL METER BANKS, SEE ELECTRICAL 53 EASEMENT LINE 54 LANDSCAPE AND SIGNAGE WILL NOT INTERFERE WITH CLEAR SIGHT REQUIREMENTS, THEREFORE SIGNS, WALLS, TREES, AND SHRUBBERY BETWEEN 3' AND 8' TALL (AS MEASURED FROM THE GUTTER PLANE) WILL NOT BE ACCEPTABLE IN THE CLEAR SIGHT TRIANGLE 55 EXPANSION JOINT, TYP. SEE A6/AS501 56 CONTROL JOINT, TYP. SEE A6/AS501 57 CURB OPENING SEE C1/AS501 58 COORDINATE SIDEWALK CONNECTION WITH OFF-SITE WORK BY OTHERS 59 CURB CUT, SEE CIVIL

LEGEND

- LANDSCAPE AREA, SEE LANDSCAPE STABILIZED CRUSHER FINES, SEE A5/AS501 ENGINEERED WOOD PLANT SURFACINGS, SEE SPECIFICATIONS REINFORCED CONCRETE, SEE A2/AS501 HEAVY DUTY ASPHALT, SEE D1/AS501 LIGHT DUTY ASPHALT, SEE D2/AS501 BASE COURSE PAVING, SEE D3/AS501 FIRE DEPARTMENT ACCESS LANE / EASEMENT AS NOTED PROPERTY LINE FIRE HYDRANT, SEE UTILITY FIRE DEPARTMENT CONNECTION (F.D.C.), SEE UTILITY MAX BUILDING SET BACK LINE SITE LIGHTING, SEE SITE ELECTRICAL ANOVA AIRI BISTRO TABLE WITH SEATS, SEE SPECIFICATIONS ANOVA AIRI LEAF TRASH RECEPTACLE, SEE SPECIFICATIONS ANOVA AIRI LEAF 6" CONTOUR BENCH, SEE SPECIFICATIONS IRRIGATION CONTROLLER INSIDE ELECTRICAL ROOM



A1 SITE PLAN 1" = 20'-0" 0 10' 20' 40'

Table with 2 columns: REVISIONS, ADDENDUM #001. Includes dates and revision numbers.

DRAWN BY: JD, TC; REVIEWED BY: CM; DATE: 10/30/2018; PROJECT NO: 18-0087; DRAWING NAME: SITE PLAN

PROJECT DATA

ZONING: (MX-4) MIXED USE - MODERATE INTENSITY ZONE DISTRICT (UC-MS-PT) PREMIUM TRANSIT AREA

LEGAL DESCRIPTION: TRACT A, NUEVO ATRISCO (BEING A REPLAT OF TRACT B1, WEST ROUTE 66 ADDITION II AS RECORDED IN OCTOBER 2018) SITUATE WITHIN THE TOWN OF ATRISCO GRANT IN PROJECTED SECTION 22 TOWNSHIP 10 NORTH, RANGE 2 EAST, NEW MEXICO PRINCIPAL MERIDIAN, CITY OF ALBUQUERQUE, BERNALILLO COUNTY, NEW MEXICO, PREVIOUSLY TRACT B1, WEST ROUTE 66 ADDITION II AS THE SAME IS SHOWN AND DESIGNATED ON THE PLAT ENTITLED "WEST ROUTE 66 ADDITION II, BEING A REPLAT OF TRACT B OF WEST ROUTE 66 ADDITION AS RECORDED ON AUGUST 12, 2013 IN BOOK 2013C, PAGE 91 AND LOT 1 OF UNIV HOSPITALS CLINIC AS RECORDED ON JANUARY 22, 2009 IN BOOK 2009C, PAGE 18, SITUATE WITHIN PROJECTED SECTION 22, T.10N., R.2E., N.M.P.M., TOWN OF ATRISCO LAND GRANT, CITY OF ALBUQUERQUE, BERNALILLO COUNTY, NEW MEXICO, DATE OF SURVEY: SEPTEMBER 2016, FILED IN THE OFFICE OF THE COUNTY CLERK OF BERNALILLO COUNTY, NEW MEXICO, ON DECEMBER 9, 2016, IN PLAT BOOK 2016C, PAGE 151.

SITE AREA: 3.0858 ACRES (134,460 SF)

USABLE OPEN SPACE: (TABLE 5-1-2) 1BR: 201 SQ. FT./UNIT = 27 X 200 = 5,400 SQ. FT. 2BR: 250 SQ. FT./UNIT = 42 X 250 = 10,500 SQ. FT. 3BR: 300 SQ. FT./UNIT = 17 X 300 = 5,100 SQ. FT. TOTAL = 21,000 SQ. FT. UC-MS-PT: 50% REDUCTION = 10,500 SQ. FT. PROVIDED COURTYARD OPENSOURCE = 12,670 SQ. FT. PROVIDED ROOFTOP PATIO OPENSOURCE = 1,957 SQ. FT. PROVIDED TOTAL = 14,627 SQ. FT. PROVIDED

BUILDING HEIGHT: (TABLE 5-1-2: MIXED-USE ZONE DISTRICT DIMENSIONAL STANDARDS) UC-MS-PT, 65FT MAXIMUM HEIGHT PLUS 12 WORKFORCE HOUSING BONUS = 77FT MAXIMUM HEIGHT

PARKING CALCULATION: (TABLE 5-4-1) DWELLING UNITS, MULTI-FAMILY UC-MS-PT: 1 SPACE / DU = 80 SPACES 80 UNITS X 1 SPACE/UNIT = 80 SPACES 6 LIVE/WORK UNITS X 1 SPACE/UNIT = 6 SPACES RESIDENTIAL SPACES REQUIRED = 86 SPACES RESIDENTIAL SPACES PROVIDED = 98 SPACES (INCLUDES 4 ACCESSIBLE SPACES PER 5-C(7)(A))

BICYCLE PARKING: IDO REQUIREMENTS (TABLE 5-5-5): RESIDENTIAL USE: 10% OF REQUIRED OFF-STREET PARKING SPACES (86) = 9 BICYCLE SPACES REQUIRED MFA 2018: PARKING FOR BICYCLES SHALL BE PROVIDED AT A RATIO OF .5 BICYCLE PARKING SPACE PER UNIT = 43 SPACES REQUIRED LEED: LONG-TERM BICYCLE STORAGE CAPACITY REQUIRED = 56 SPACES COVERED AND 5 SHORT TERM COVERED SPACES PROVIDED BICYCLE SPACES = 98 (80 ARE LOCATED IN AN INDOOR BICYCLE STORAGE ROOM, AND 10 ARE LOCATED OUTDOORS)

DEMOLITION NOTES

- A. EXISTING PAVEMENT, ASPHALT CURB, AND LIGHT POLES WITHIN THIS PROJECT WORK AREA TO BE DEMOLISHED. B. CONTRACTOR SHALL OBTAIN AN UNDERSTANDING OF EXISTING CONDITIONS BOTH ON SITE AND ADJACENT TO THE SITE. C. CONTRACTOR SHALL BE RESPONSIBLE FOR PROVIDING SAFETY MEASURES TO PROTECT PEDESTRIANS, VEHICLES, AND ALL EXISTING IMPROVEMENTS TO REMAIN. D. DEMOLITION ITEMS MUST BE FIELD VERIFIED WITH OWNER. E. CONTRACTOR TO VERIFY THE LOCATIONS OF EXISTING UTILITIES AND ASSOCIATED EQUIPMENT BEFORE EXCAVATION. F. UTILITIES SCHEDULED FOR DEMOLITION SHALL BE CAPPED OFF AS CLOSE TO THE SOURCE AS POSSIBLE AND COMPLETELY REMOVED. UTILITY DEMOLITION IS TO BE COMPLETE INSIDE THE LIMITS OF WORK AND INCLUDES, BUT IS NOT LIMITED TO: CONDUIT, PIPE, WIRES, ANCHORS AND TIES. G. DEMOLITION MATERIALS ARE TO BE REMOVED TO A LEGAL WASTE FACILITY. CONTRACTOR IS RESPONSIBLE FOR SUPPLYING REFUSE CONTAINERS TO HANDLE DEBRIS TO BE REMOVED, AS WELL AS PROVIDING FEES ASSOCIATED WITH REMOVAL AND DISPOSAL OF DEBRIS. H. EXISTING UTILITY STUBS THAT REMAIN SHALL BE DOCUMENTED ON SURVEYED AS-BUILT DRAWINGS THAT SHALL BE TURNED OVER TO THE OWNER AT CONTRACT CLOSE OUT.

GENERAL SHEET NOTES

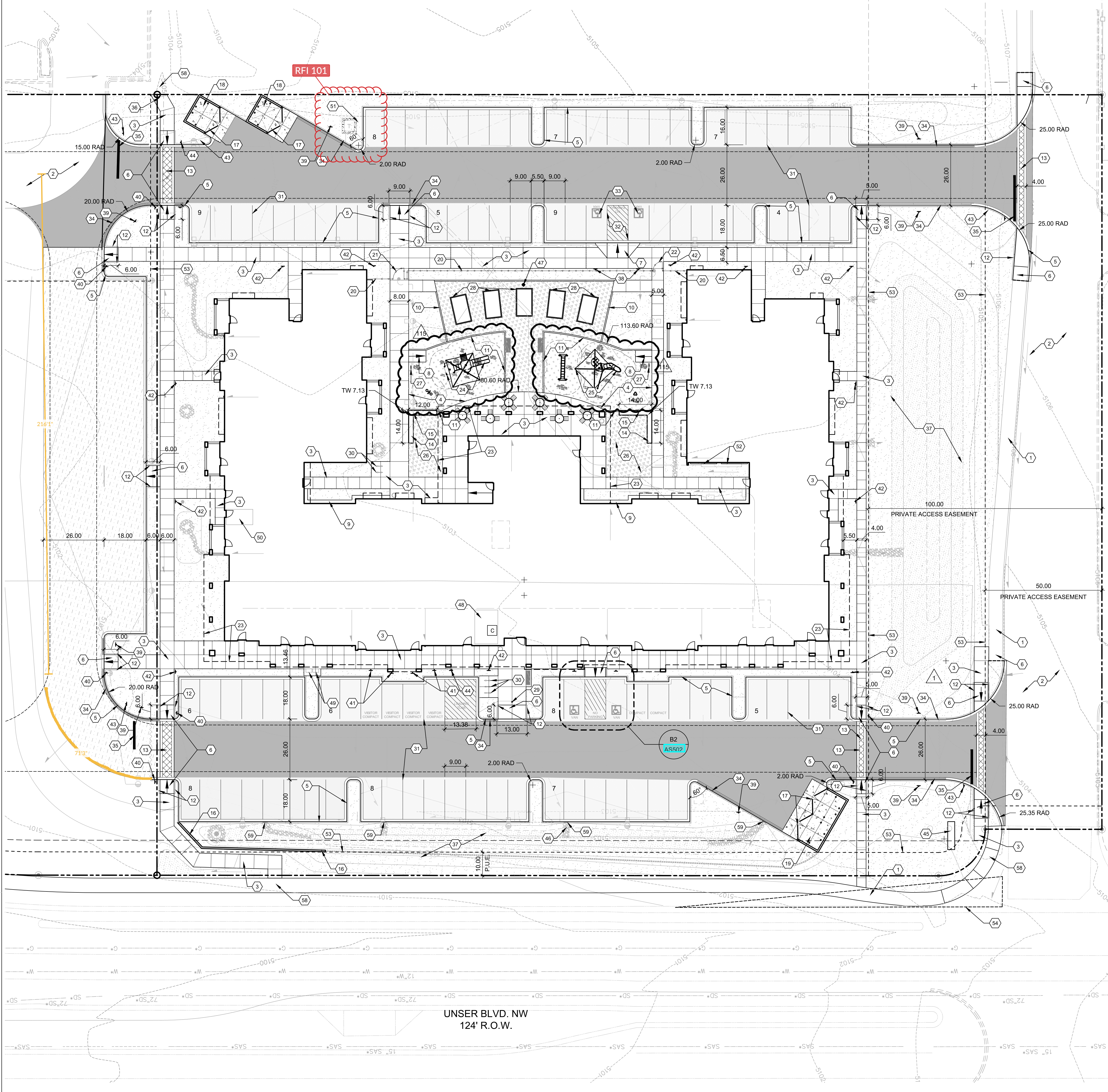
- A. SOLID WASTE COLLECTION IS THE RESPONSIBILITY OF THE CITY OF ALBUQUERQUE SOLID WASTE DEPARTMENT. B. THE SITE SHALL COMPLY WITH THE INTERNATIONAL FIRE CODE (IFC) 2009. C. THE FIRE DEPARTMENT ACCESS SHALL NOT BE LESS THAN 20' THROUGHOUT THE COMPLEX. D. THE SITE SHALL HAVE A WATER SUPPLY THAT MEETS FIRE FLOW AND HAVE A DISTANCE TO THE NEAREST HYDRANT TO MEET IFC REQUIREMENTS. E. ALL FIRE DEPARTMENT ACCESS SHALL HAVE A GRADE NO GREATER THAN 10%. F. THE SITE SHALL MEET ALL DEAD END REQUIREMENTS AS PER IFC OR PROVIDE EMERGENCY TURN-AROUND PER IFC. G. CONTRACTOR IS TO VERIFY ALL EXISTING UTILITY LOCATIONS BEFORE EXCAVATION. H. CONTRACTOR TO COORDINATE WITH OWNER FOR ALLOWABLE STAGING AREAS DURING CONSTRUCTION. I. UTILITIES AND ASSOCIATED EQUIPMENT SHOWN FOR REFERENCE ONLY. CONTRACTOR TO COORDINATE LOCATION AND INSTALLATION. SEE CIVIL AND ELECTRICAL DRAWINGS. J. ALL SITE PLAN DIMENSIONS ARE IN DECIMAL UNITS. K. SEE CIVIL SITE GRADING PLAN FOR INFORMATION ON DRAINAGE CURB CUTS AND DETENTION AREAS. L. THE GRADES INDICATED ON THE PLANS ARE FINISHED GRADES UNLESS OTHERWISE INDICATED. THE CONTRACTOR IS RESPONSIBLE FOR SETTING SUBGRADES TO ACCOMMODATE PROPOSED IMPROVEMENTS AS INDICATED ON THE PLANS INCLUDING, BUT NOT LIMITED TO PLAYGROUND EQUIPMENT AND FOOTINGS, AND PLAYGROUND PROTECTIVE SURFACING. M. DIMENSIONS ARE TO FACE OF CURB, OR WALL, OR EDGE OF PAVEMENT UNLESS OTHERWISE NOTED. N. SITE PLAN SHALL COMPLY WITH LOCAL, FEDERAL, ADA STANDARDS & GUIDELINES O. CURBS AND ACCESSIBLE RAMPS WILL BE DESIGNED AND BUILT ACCORDING TO CITY OF ALBUQUERQUE STANDARDS P. LIGHT FIXTURES AND LIGHTING DESIGN SHALL COMPLY WITH THE CITY OF ALBUQUERQUE INTEGRATED DESIGN SHALL ORDINANCE (IDO); SECTION 14-16-5-8 OUTDOOR LIGHTING Q. STREETS, PARKING SPACES AND ASSOCIATED DRIVES TO BE ASPHALT UNLESS NOTED OTHERWISE R. PARKING SPACES AT 9'-0" X 18'-0" UNLESS NOTED OTHERWISE S. PROVIDE EXPANSION JOINTS ALONG BUILDING FACE WITH POURABLE SEALANT, TYP SIDEWALK JOINTS SHALL FOLLOW PATTERN AS SHOWN ON SITE PLAN. U. BUILDING AND FREESTANDING SIGNAGE TO BE SUBMITTED UNDER A SEPARATE SIGN PERMIT AS PER THE UNDERLYING ZONING. V. THIS PROJECT HAS BEEN DESIGNED TO COMPLY WITH SELECT LEED FOR HOMES V4 CREDITS. CONTRACTOR SHALL HOLD THESE REQUIREMENTS PARAMOUNT WHEN CONSIDERING FIELD CHANGES AND/OR SUBSTITUTION REQUESTS.

SHEET KEYED NOTES

Table with 2 columns: CODE, DESCRIPTION. Lists 59 items corresponding to the drawing's callouts, such as 'EXISTING CONCRETE WALK TO REMAIN', 'CONCRETE SIDEWALK', 'TURNDOWN SIDEWALK AT PLAY AREA', etc.

LEGEND

Table with 2 columns: Symbol, Description. Defines symbols for landscape area, stabilized crusher fines, engineered wood play surfacings, reinforced concrete, heavy duty asphalt, light duty asphalt, base course paving, fire department access lane, property line, fire hydrant, fire department connection, max building set back line, site lighting, Anova Airi Bistro table, Anova Airi Leaf trash receptacle, Anova Airi Leaf 6' contour bench, and irrigation controller.



A1 SITE PLAN 1" = 20'-0" Scale bar and north arrow.



THESE PLANS AND SPECIFICATIONS ARE THE PROPERTY OF JGA SHADE AND FABRIC STRUCTURES AND SHALL NOT BE REPRODUCED WITHOUT THEIR WRITTEN PERMISSION.



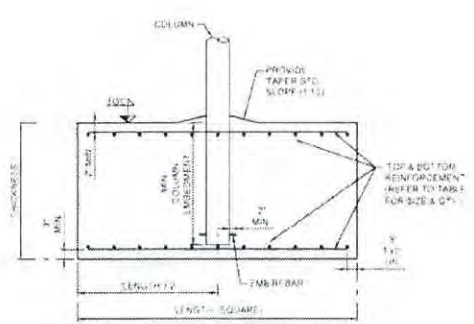
CORPORATE HEADQUARTERS
7560 EFFERS ROAD, SUITE 100
DENVER, COLORADO 80231
TEL: 303.755.5000

REINFORCED CONCRETE NOTES

- CONCRETE WORK SHALL BE EXECUTED IN ACCORDANCE WITH THE LATEST EDITION OF THE AMERICAN CONCRETE INSTITUTE SPECIFICATION FOR STRUCTURAL CONCRETE (ACI 308) AND BUILDING CODE ACI 318. CONCRETE SPECIFICATIONS SHALL BE AS FOLLOWS:
 - 28 DAY STRENGTH (2800 PSI)
 - SLOPE 3%
 - FORT AND CEMENT SHALL CONFORM TO C-150
 - AIR ENTRAINMENT SHALL CONFORM TO ASTM C-432
- ALL REINFORCEMENT STEEL SHALL CONFORM TO ASTM A-615 GRADE 60 AND SHALL BE DETAILED, FABRICATED AND PLACED IN ACCORDANCE WITH THE LATEST REVISIONS OF THE ACI 308 AND ACI 318. REFER TO THE LATEST ACI 308 AND ACI 318 MANUAL OF STANDARD PRACTICE.
- ALL ANCHOR BOLTS SET IN NEW CONCRETE (WHEN APPLICABLE) SHALL COMPLY WITH ASTM F-1554 GRADE 55 (GALVANIZED).
- ALL NON-SHRINK GROUT SHALL HAVE A MINIMUM 28 DAYS COMPRESSIVE STRENGTH OF 5000 PSI AND SHALL COMPLY WITH THE REQUIREMENTS OF ASTM C-1109, ASTM C-1109, AND ASTM C-1107, WHEN APPLICABLE.
- SOIL PARAMETERS FOR FOUNDATION ANALYSIS: TABLE 1906.2, CLASS II, 15000 PSI.
- FOR SPREAD FOOTING, TOP OF COLUMN OR ANCHOR BOLTS MUST BE SET AT LEAST 1/2" FROM THE EDGE OF SPREAD FOOTING EDGE.
- FOR DRILLED PIER, THE EDGE OF COLUMN MUST BE SET AT LEAST 3/4" FROM REBAR WITHIN DRILLED PIER.
- SPREAD FOOTING ALLOWED TO BE ROTATED AS REQUIRED.

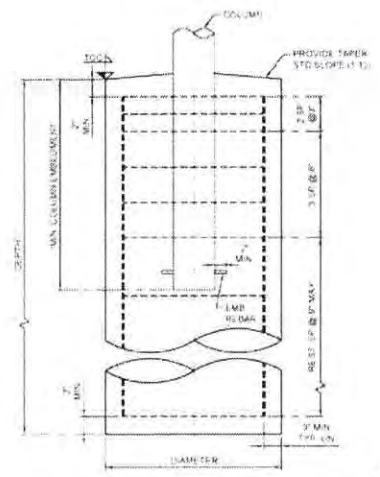
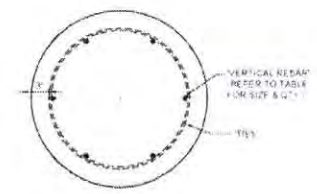
LENGTH (FT)	THICKNESS (IN)	TOP AND BOTTOM REINFORCEMENT				MIN. COLUMN EMBEDMENT (MIN. FT)	MIN. ANCHOR EMBEDMENT (MIN. FT)	
		QTY	SIZE	SPACING (IN)	IN		OUT	
4.00	18.0	8	#5	16	6.0	0.0	0.0	0.0

DIAMETER (FT)	DEPTH (FT)	VERTICAL REBAR	I.C.D.				MIN. COLUMN EMBEDMENT (MIN. FT)	MIN. ANCHOR EMBEDMENT (MIN. FT)
			QTY	SIZE	QTY	SIZE		
2.50	8.00	0	#6	14	2.00	#4	36	48



SPREAD FOOTING TYPE

EMBEDDED SCHEMATIC VIEWING REFER TO TABLE FOR VARIABLE DIMENSIONS



DRILLED PIER FOOTING TYPE

EMBEDDED SCHEMATIC VIEWING REFER TO TABLE FOR VARIABLE DIMENSIONS & QTY

Digitally signed by Thomas R. Sadler, PE
Date: 2022.02.11 11:21:56 -06'00



CERTIFICATIONS
IAS CERTIFICATION NO. PA-208
CIARK COUNTY MANUFACTURER CERTIFICATION NUMBER (NATA) 355

CUSTOMER
Newco Atasco Apartments
PROJECT NAME
Newco Atasco Apartments
LOCATION
Atascadero NM
PROJECT NUMBER
B0806

STRUCTURE TYPE
Single Post Pyramid 1103
SIZE
20'0" x 20'0" x 9'0"
SCALE AS NOTED
DRAWING SIZE
B

REV	NC	DESCRIPTION	DATE	DRW	CHK	ENG
		RELEASE FOR CONSTRUCTION		MP	MP	MP

Drawn By: MP
Design By: MP
Approved By: MP

DRAWING DESCRIPTION
FOOTING DETAILS

FIG. NO. 3000
PAGE 1 OF 1
DATE 2022.02.11

THIS DRAWING AND SPECIFICATIONS ARE THE PROPERTY OF USA SHADE AND FABRIC STRUCTURES AND SHALL NOT BE REPRODUCED WITHOUT THEIR WRITTEN PERMISSION.



CORPORATE HEADQUARTERS
 2540 ESTERS BLVD., SUITE 140
 DFW AIRPORT, TX 75261
 950-760-5005

CERTIFICATION:
 IAS CERTIFICATION No. RA-428
 CLARK COUNTY MANUFACTURER
 CERTIFICATION NUMBER (REVALUATION)
 359

CUSTOMER:
 Name: Alhori Apartments
PROJECT NAME:
 Name: Alhori Apartments
LOCATION:
 Albuquerque, NM
PROJECT NUMBER:
 80888

STRUCTURE TYPE:
 Single Post Pyramid 1103

SIZE:
 20' 0" x 20' 0" x 9' 0"

SCALE: AS NOTED

DRAWING SIZE:

B

REV	DESCRIPTION	DATE	DRW	CHK	ENG
1	RELEASE FOR CONSTRUCTION		MP	MP	MP

Eng. By	MP
Design By	MP
Approval By	MP

DRAWING DESCRIPTION:
 ELEVATIONS AND DETAILS

CWS:

PAGE: 2000

REV:

NC

TABLE OF DIMENSIONS

W	L	H	C	HT	CL	COL	RL	CHT
20' 0"	20' 0"	9' 0"	4' 0"	13' 5"	1' 3"	13' 10"	12' 6"	10' 10"

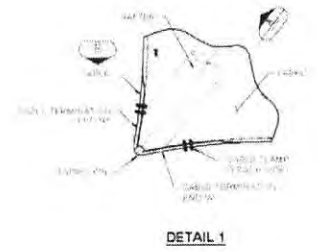
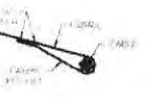
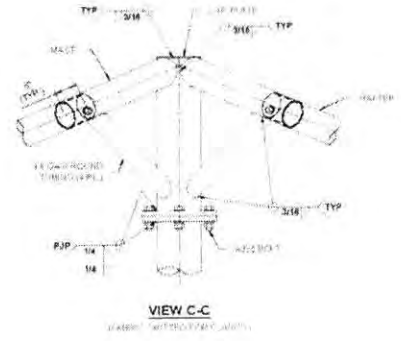
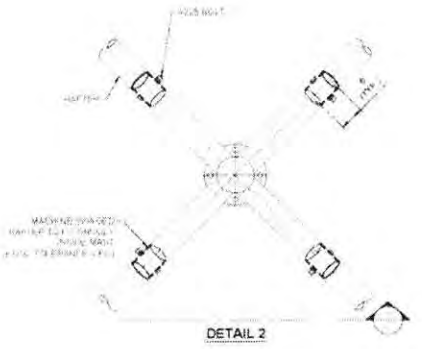
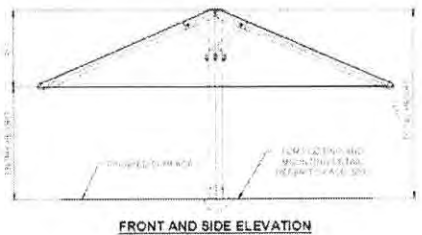
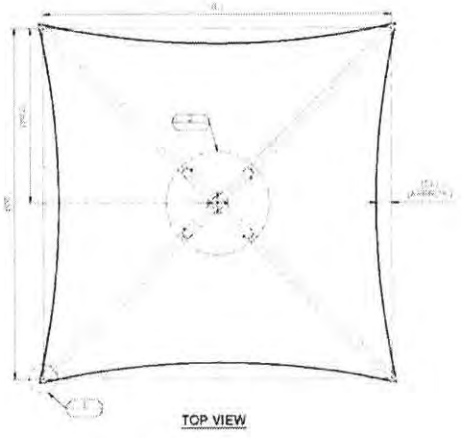
TABLE OF DIMENSIONS KEY

W	WIDTH
L	LENGTH
H	ENTRY HEIGHT
C	SHADE HEIGHT
HT	TOTAL HEIGHT
CL	FABRIC CATENARY LENGTH
COL	COLUMN LENGTH
RL	RAFTER LENGTH
CHT	COLUMN HEIGHT

PLAN NORTH



FOR TRUE NORTH
 SEE CUSTOMER'S
 SITE PLAN



Digitally signed by
 Thomas R. Sadler, PE
 Date: 2022.02.11
 11:21:45 -06'00



GENERAL NOTES

DESIGN LOADS

BUILDING CODE	INTERNATIONAL BUILDING CODE 2015
LIVE LOADS	5 PSF
SNOW LOAD	5 PSF
WIND LOADS	115 MPH and 180 MPH A-B Fabric Cl 1-Gal. Gal. RISK CATEGORY II & EXPOSURE C

115 MPH ACCORDING TO THE ULTIMATE WIND SPEED MAPS OF ASCE 7-10 IS EQUIVALENT TO THE NOMINAL WIND SPEED OF 90 MPH ACCORDING ASCE 7-05 AND IBC 2015 EQ 16-2.

STRUCTURAL STEEL

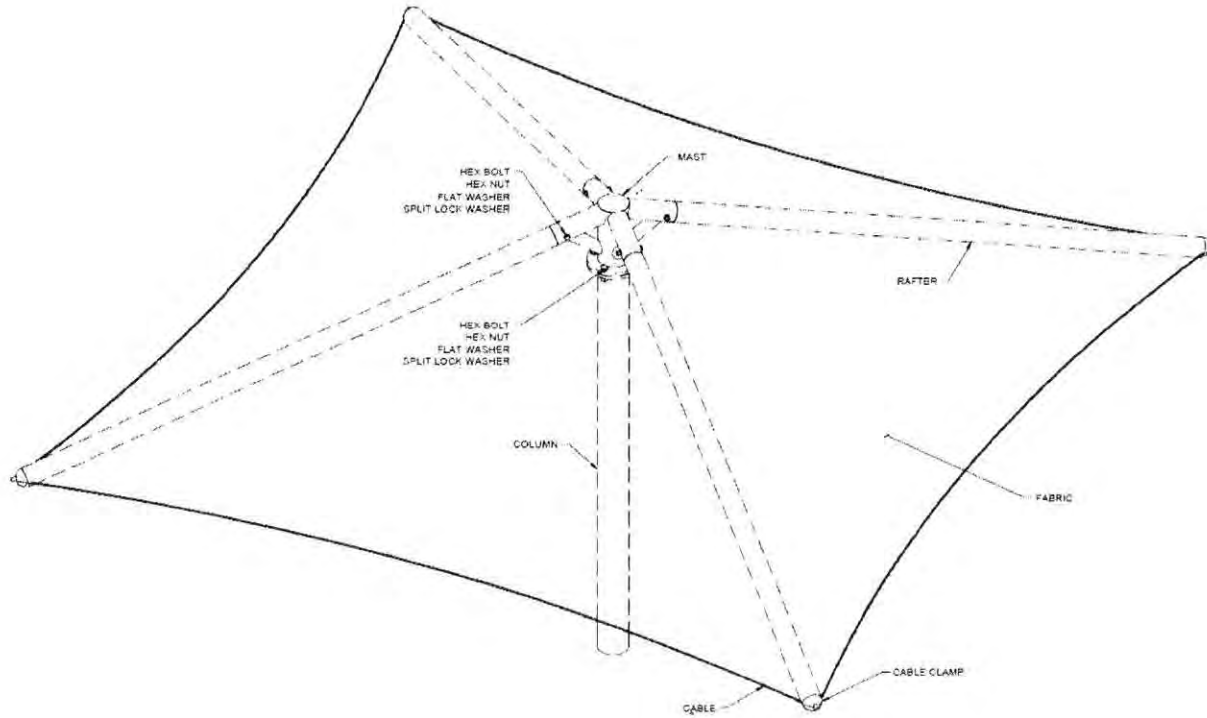
- ALL STRUCTURAL SHAPES SHALL BE COLD FORMED USS ASTM A500 GRADE C UNLESS OTHERWISE NOTED. TYPICAL MECHANICAL PROPERTIES FOR HSS PRODUCTS:
SQUARE AND RECTANGULAR: 50,000 PSI YIELD / 62,000 PSI TENSILE
ROUND PIPE: 48,000 PSI YIELD / 62,000 PSI TENSILE
- ALL GALVANIZED STEEL TUBE PRODUCTS ARE MANUFACTURED PER ASTM A500. TYPICAL MECHANICAL PROPERTIES ACHIEVED FOR GALVANIZED TUBE PRODUCTS:
ROUND TUBE: 45,000 PSI YIELD / 48,000 PSI TENSILE
- ALL PLATES SHALL COMPLY WITH ASTM A572 GRADE 50.
- ALL STEEL TUBING SHALL BE TRIPLE COATED FOR RUST PROTECTION USING THE POLY-ETHYLENE GRAFTING COAT PROCESS. TUBING SHALL BE INTERNALLY COATED WITH ZINC AND ORGANIC COATINGS TO PREVENT CORROSION AS MANUFACTURED BY ALLIED TUBE & CONDUIT.
- STRUCTURAL STEEL SHALL BE DETAIL FABRICATED AND ERECTED IN ACCORDANCE WITH AISC SPECIFICATIONS.
- ALL SHOP WELDS SHALL BE EXECUTED IN ACCORDANCE WITH THE LATEST EDITION OF THE AMERICAN WELDING SOCIETY (AWS) D11 SPECIFICATIONS. ALL WELDS SHALL BE CONTINUOUS WHERE LENGTH IS NOT GIVEN, UNLESS OTHERWISE SHOWN OR NOTED ON DRAWINGS. ALL WELDS SHALL DEVELOP THE FULL STRENGTH OF THE WEAKER MEMBER. ALL WELDS SHALL BE MADE USING E70XX GAS WIRE.
- SHOP CONNECTIONS SHALL BE WELDED UNLESS NOTED OTHERWISE. FIELD CONNECTIONS SHALL BE AS INDICATED ON THE DRAWINGS IF REQUIRED. ALL FILLET WELDS SHALL BE A MINIMUM OF 3/16" UNLESS OTHERWISE NOTED. FIELD WELDS SHALL NOT BE ALLOWED.
- ALL HIGH STRENGTH BOLTS SHALL COMPLY WITH ASTM F1552 GRADE A325 (GALVANIZED). ALL NUTS SHALL COMPLY WITH ASTM A563HD AND WASHERS SHALL COMPLY WITH ASTM F436.
- ALL HIGH STRENGTH BOLTS SHALL BE TIGHTENED TO A SNUG TIGHT CONDITION.
- ALL STAINLESS STEEL BOLTS, STUDS SHALL COMPLY WITH ASTM F593, ALLOY GROUP 1 OR 2. ALL NUTS SHALL COMPLY WITH ASTM F594 ALLOY GROUP 1 OR 2.
- ALL STRUCTURAL STEEL SHALL BE POWDER COATED WITH ONE SHOP COAT (2.5 MILS MIN.) OF ZINC-RICH PRIMER, UNDERCOAT AND FINISH COAT OR EQUIVALENT PAINT SYSTEM. THIS COAT IS A WEATHER RESISTANT POWDER COATING BASED ON POLYESTER TGIC (MANUFACTURED BY SHERWIN WILLIAMS, ARMO NUBEL, PPG OR TIGER DRYLAC). TO ACHIEVE OPTIMUM ADHESION, IT IS RECOMMENDED THAT THE PROPER TREATMENT AND DRYING TAKE PLACE BEFORE COATING. POLYESTER POWDER TGIC SPECIFICATIONS SHALL BE AS FOLLOWS:
* PENCIL HARDNESS (ASTM D-1193)
* HUMIDITY (ASTM D-2247)
* SOLVENT RESISTANCE (PCF METHOD) - 50 DIL. RUBS 3L, 50FTNESS.

FABRIC SPECIFICATION

- FABRIC SHALL BE A HIGH DENSITY POLYETHYLENE WITH ULTRA VIOLET ADDITIVES, WITH MONOFILAMENT AND TAPE CONSTRUCTION GIVING A STABLE MATERIAL AND RACHET KNITTED TO ENSURE MATERIAL WILL NOT UNRAVEL IF CUT.
- | | | |
|----------------|--------------------------------------|--------------------------------------|
| | SOLID COLORS | STRIPED COLORS |
| TEAR STRENGTH | WARP 220-4622 LB
WEFT 162-3707 LB | WARP 182-3916 LB
WEFT 431-2413 LB |
| BURST STRENGTH | 37,706 PSIA | 33,086 PSIA |
| FADING | MINIMUM FADING AFTER 5 YEARS | |
- LIFE EXPECTANCY A MINIMUM OF 8 YEARS CONTINUOUS EXPOSURE TO THE SUN.
- FIKE TEST (ON FABRIC): NFPA 701 TEST 1 AND ASTM E 84
- THREAD (TIE, TEFLON) USED MEET THE FOLLOWING SPECIFICATIONS: HIGH STRENGTH, LOW SHRINKAGE, WIDE TEMPERATURE RANGE, FLEX, ABRASION RESISTANT AND UV RADIATION MINIMALLY. LOCK-STITCH - 1299 DENIER, CHAINSTITCH THREAD - 2300 DENIER.

AIRCRAFT CABLE

- WIRE ROPE CABLE SHALL BE 7 X 19 STRAND CORE GALVANIZED WIRE ROPE WITH A BREAKING STRENGTH VALUE OF 14,100 LBS (1/2" DIAMETER).
- CABLES SHALL BE FED THROUGH THE FABRIC SLEEVES AROUND THE PERIMETER OF THE CANOPY AND TENSIONED UNTIL THE FABRIC PANELS (DESIGNED PURPOSEFULLY UNDERSTITCH) REACH A TAUNT APPEARANCE. ANY LONG TERM CABLE SAG SHALL BE MINIMIZED DURING THE MAINTENANCE RE-TIGHTENING VISITS AS REQUIRED.



ISOMETRIC VIEW

LIST OF MATERIALS

ITEM	QTY	DESCRIPTION	UNIT PRICE \$
MAST	1	MADE IN US	MIT 112122
BOLT	4	5/8" DIA. 11.0 LB. 1/2" DIA. 1/2"	90722
HEX NUT	4	5/8" DIA. 11.0 LB. 1/2" DIA. 1/2"	90722
SPLIT LOCK WASHER	4	5/8" DIA. 11.0 LB. 1/2" DIA. 1/2"	90722
FLAT WASHER	4	5/8" DIA. 11.0 LB. 1/2" DIA. 1/2"	90722
BOLT	4	5/8" DIA. 11.0 LB. 1/2" DIA. 1/2"	90722
HEX NUT	4	5/8" DIA. 11.0 LB. 1/2" DIA. 1/2"	90722
SPLIT LOCK WASHER	4	5/8" DIA. 11.0 LB. 1/2" DIA. 1/2"	90722
RAFTER	4	2" DIA. 11.0 LB. 1/2" DIA. 1/2"	90722
CABLE CLAMP	4	2" DIA. 11.0 LB. 1/2" DIA. 1/2"	90722
CABLE	1	7 X 19 STRAND CORE GALVANIZED WIRE ROPE WITH A BREAKING STRENGTH VALUE OF 14,100 LBS (1/2" DIAMETER)	90722
FABRIC	1	FABRIC SHADENET 10000173	90722
CABLE	1	FABRIC SHADENET 10000173	90722
RAFTER	4	2" DIA. 11.0 LB. 1/2" DIA. 1/2"	90722

NOTICE

- FABRIC TOP NEEDS TO BE REMOVED IF SNOW EXCEEDING 5 PSF IS ANTICIPATED.
- FABRIC TOP NEEDS TO BE REMOVED IF WINDS EXCEEDING 115 MPH ARE ANTICIPATED. SEE NOTES FOR DESIGN LOADS.

CODE ANALYSIS

BUILDING	OCCUPANCY	CONSTRUCTION TYPE	AREA (SQFT)	OCCUPANT LOAD
SHADE STRUCTURE 20' 0" x 20' 0"	U	U-B	400	NA

THESE PLANS AND SPECIFICATIONS ARE THE PROPERTY OF USA SHADE AND FABRIC STRUCTURE, INC. AND SHALL NOT BE REPRODUCED WITHOUT THE WRITTEN PERMISSION.



CORPORATE HEADQUARTERS
2580 ESTERHIL BLVD. SUITE 100
DOW AEROSPACE TX 75261
800-954-5065

CERTIFICATIONS
IAS CERTIFICATION No. FA-428
CLARK COUNTY MANUFACTURER CERTIFICATION NUMBER (NEVADA) 355

CUSTOMER:
Nuvve Atlantic Apartments
PROJECT NAME:
Nuvve Atlantic Apartments
LOCATION:
Albuquerque NM
PROJECT NUMBER:
80668

STRUCTURE TYPE:
Single Post Pyramid 1103

SIZE:
20' 0" x 20' 0" x 9' 0"

SCALE: AS NOTED

DRAWING SIZE:

B

REV.	DESCRIPTION	DATE	DRW.	CHK.	ENG.
1	RELEASE FOR CONSTRUCTION		MP	MP	MP

DESIGN BY	DATE
MP	

NOTES / LOM

EWL
PAGE
1000

REV
NC

Digitally signed by
Thomas R. Sadler, PE
Date: 2022.02.11
11:21:35 -06'00

