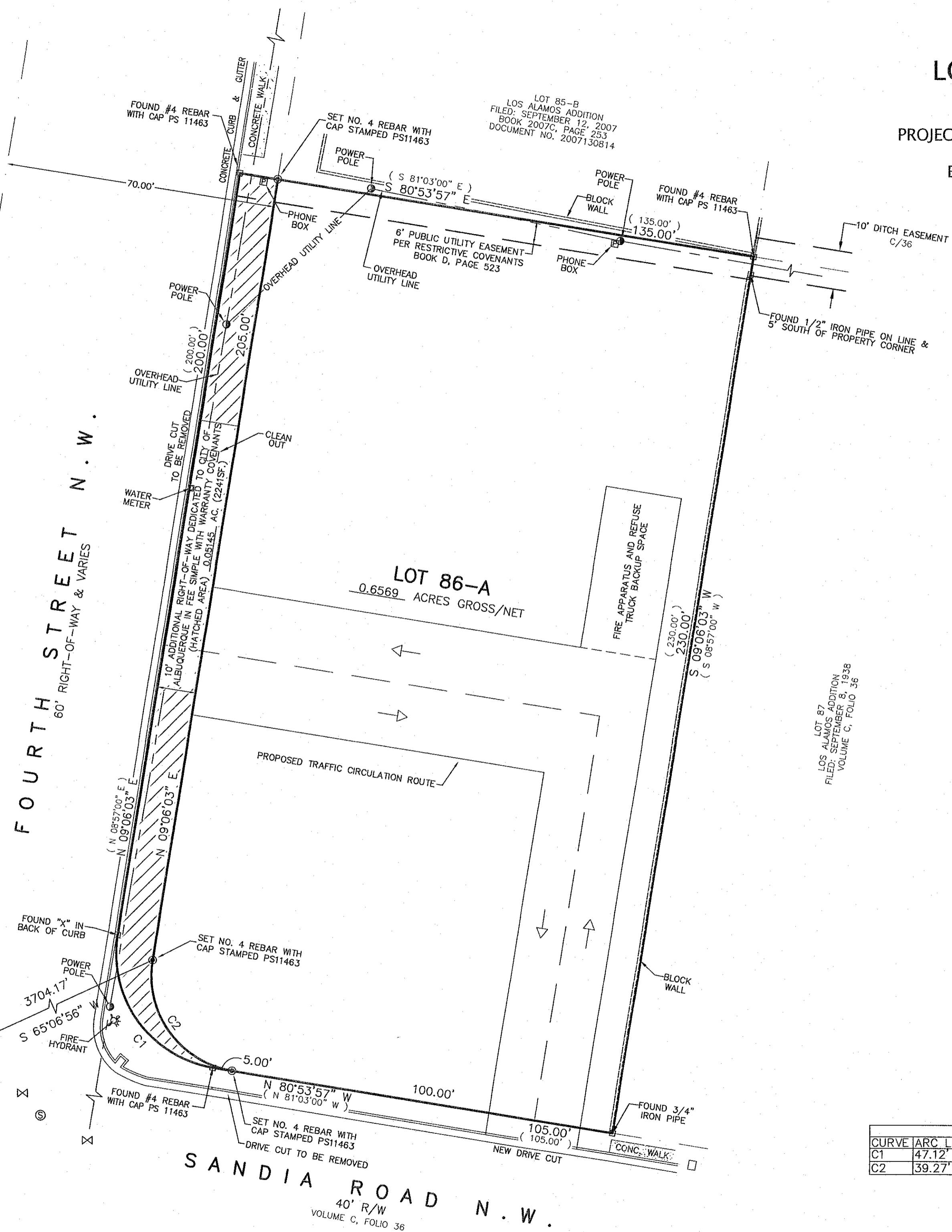


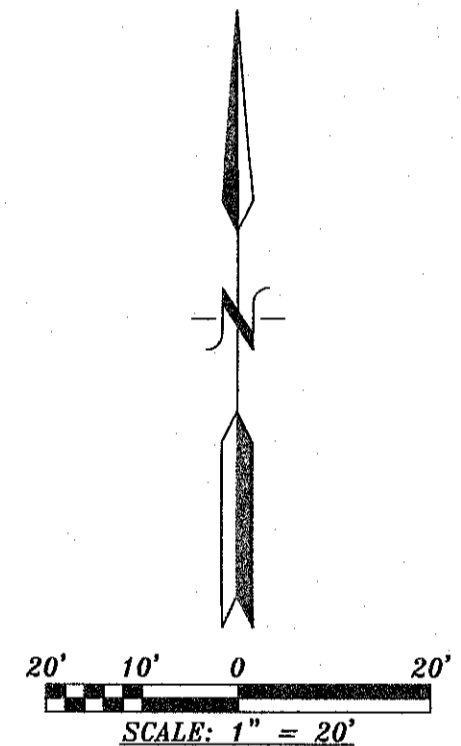
SKETCH PLAT OF
LOT 86-A
LOS ALAMOS ADDITION

WITHIN
 ELENA GALLEGOS GRANT
 PROJECTED SECTION 32, T.11N., R.3E., N.M.P.M.
 CITY OF ALBUQUERQUE
 BERNALILLO COUNTY, NEW MEXICO
 MAY, 2020



ACS STATION "DOUGLAS"
 N=1,505,417.495 US SURVEY FEET
 E=1,520,286.421 US SURVEY FEET
 GRD TO GRID=0.999682452
 Δα = -00° 13' 52.53"
 CENTRAL ZONE, NAD 1983
 ELEVATION = 4,975.078 US SURVEY FEET
 NAVD 1988

LOT 87
 LOS ALAMOS ADDITION
 FILED: SEPTEMBER 8, 1938
 VOLUME C, FOLIO 36



CURVE TABLE					
CURVE	ARC LENGTH	RADIUS	DELTA ANGLE	CHORD BEARING	CHORD LENGTH
C1	47.12'	30.00'	90°00'00"	N 35°53'57" W	42.43'
C2	39.27'	25.00'	90°00'00"	S 35°53'57" E	35.36'

THE SURVEY OFFICE, LLC
 ALBUQUERQUE, NEW MEXICO PHONE: (505) 998-0303
 333 LOMAS BLVD., N.E. 87102 FAX: (505) 998-0305