

ADMINISTRATIVE AMENDMENT

FILE # SI-2020 PROJECT # PIR-2019
00036 002345

New signage

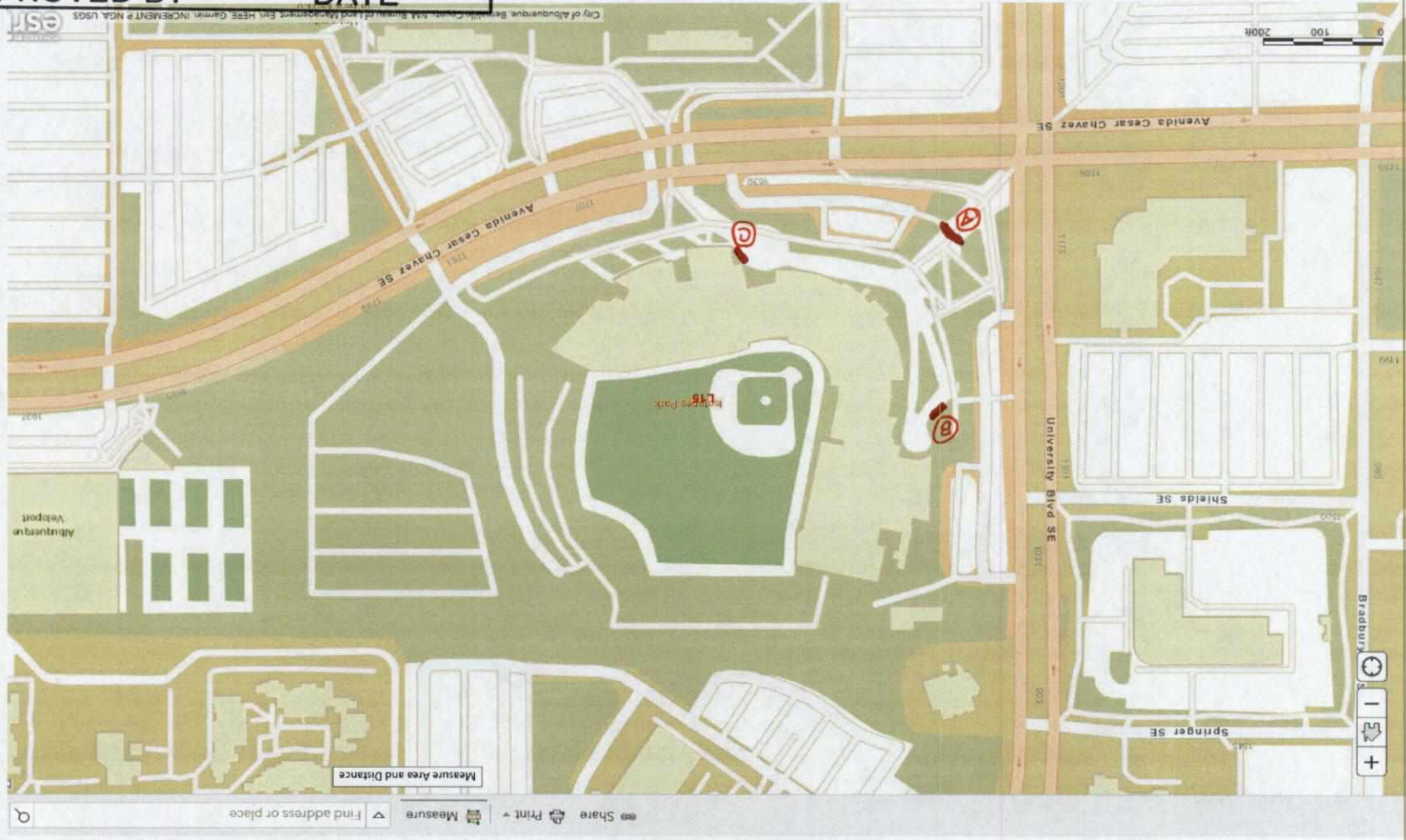
A, B, and C.

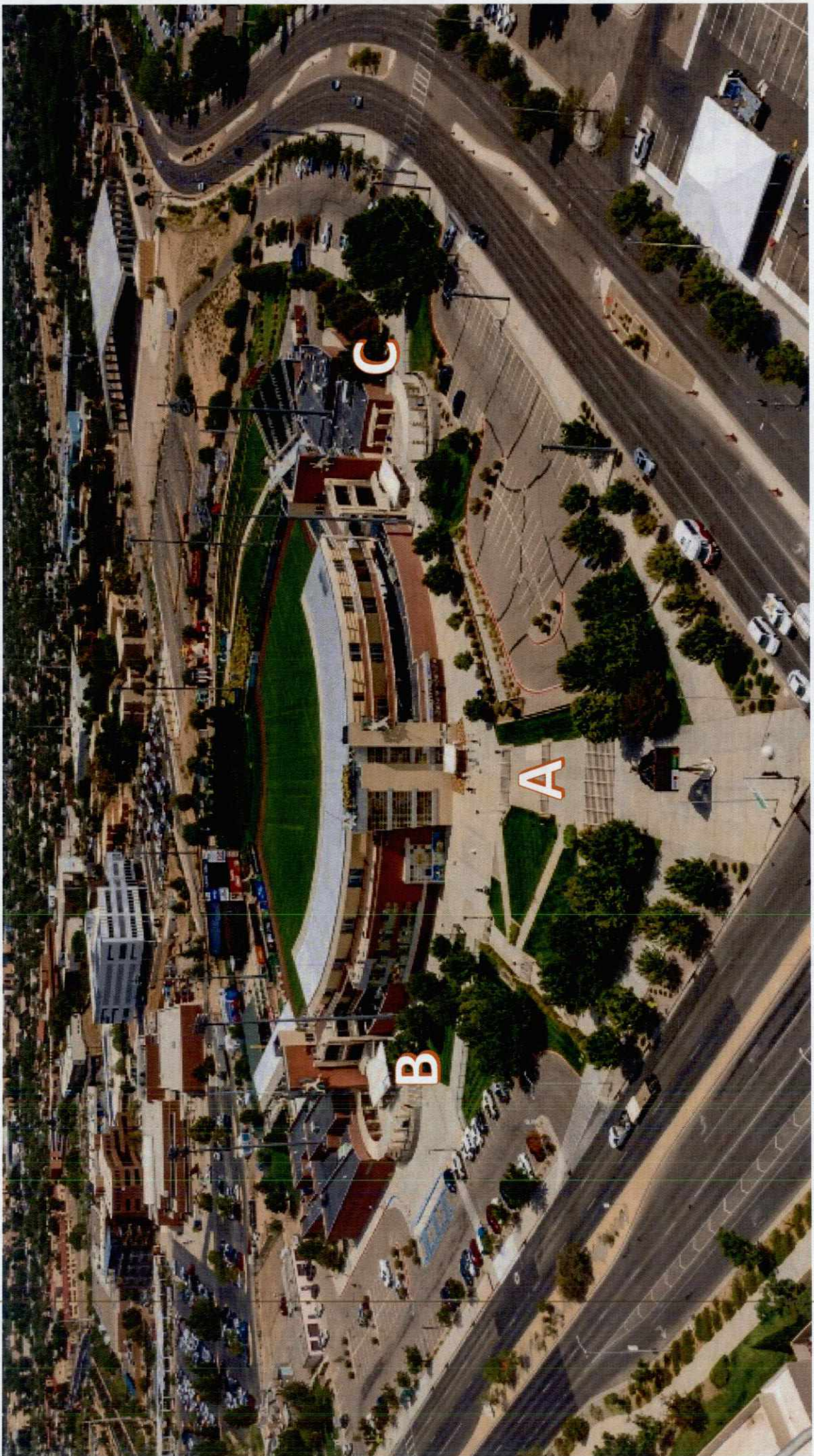
[Signature] 14 Feb 2020

APPROVED BY DATE

- Ⓐ ARCHWAY OVER STAIRWELL IN FRONT OF STADIUM
- Ⓑ MONUMENT SIGN AT 3B STAIRS
- Ⓒ MONUMENT SIGN AT 1B RAMP

- PROPOSED SIGNAGE LOCATIONS

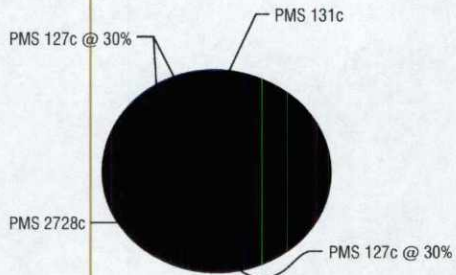
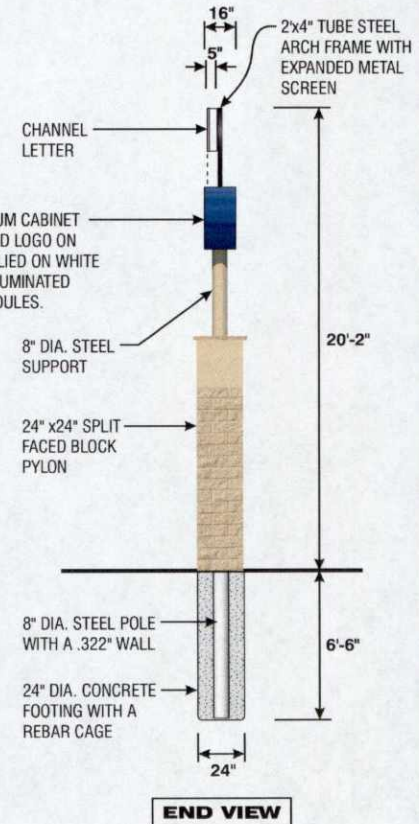
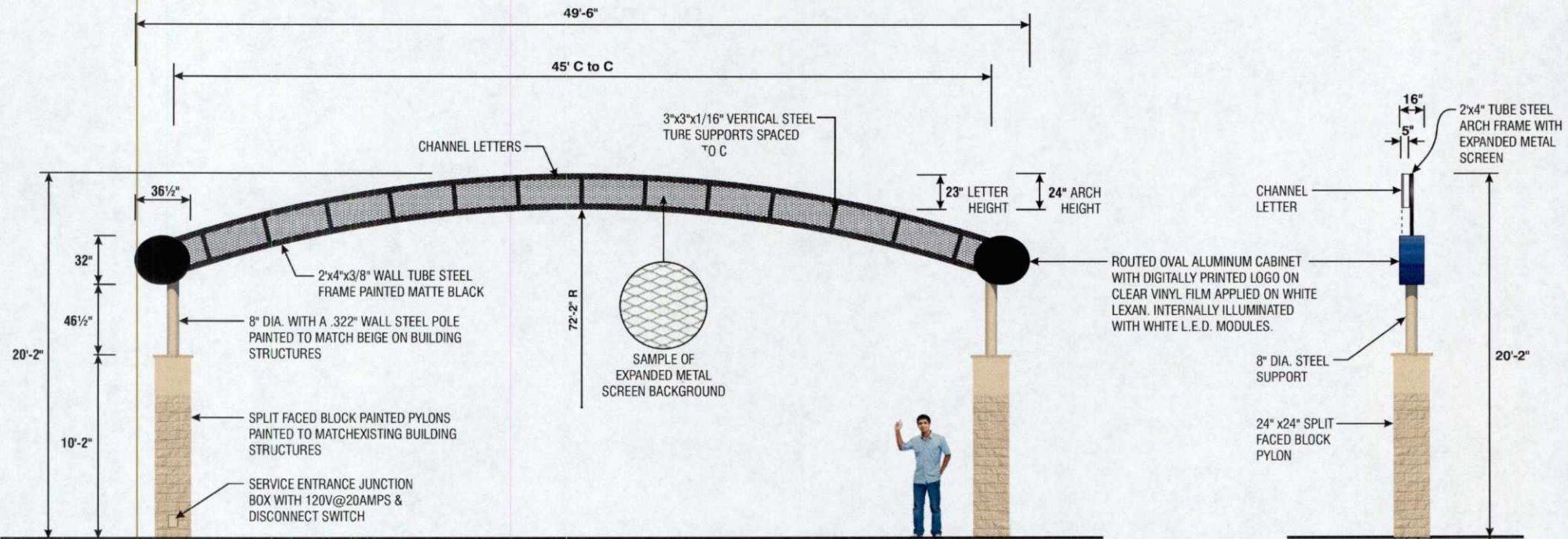




C

A

B



LOGO COLORS



DESIGN CONCEPT FOR DOUBLE FACE ARCHWAY FOR MAIN ENTRANCE

- FABRICATE NEW STEEL ARCHWAY WITH AN EXPANDED METAL SCREEN BACKING AND ILLUMINATED CHANNEL LETTERS MOUNTED ON BOTH SIDES
- RGCU LOGO - FABRICATE (2) TWO DOUBLE FACE PAINTED PANTONE 2728c BLUE WITH ROUTED ALUMINUM OVALS BACKED WITH DIGITALLY PRINTED GRAPHIC ON CLEAR VINYL FILM APPLIED ON WHITE LEXAN. INTERNALLY ILLUMINATED WITH WHITE L.E.D. MODULES.
- (2) TWO ARCHITECTURAL PYLONS WITH SPLIT-FACED BLOCKS PAINTED TO MATCH EXISTING SUPPORTS

THIS DESIGN IS THE EXCLUSIVE PROPERTY OF EPNM, INC. AND CANNOT BE REPRODUCED EITHER IN WHOLE OR IN PART WITHOUT THEIR WRITTEN CONSENT.

PIPE SIZES(S) AND/OR SPLICES MAY CHANGE THE ARTIST CONCEPT DEPENDING ON ENGINEERING CALCULATIONS FOR FINAL INSTALLATION.

ACTUAL SIZE OF SIGN AND COPY FROM SCALED DRAWING MAY VARY 1"±. COLOR ON THIS PRESENTATION DOES NOT REPRESENT THE EXACT MATERIAL COLOR SPECIFIED. SEE CHART(S) FOR EXACT APPEARANCE OF COLORS SPECIFIED.

TITLE: ISOTOPES PARK

SCALE: 3/16" = 1'-0"

SALES: JIM MITCHELL

DESIGN BY: R. GONZALES

DRWG NO: 1119 - 525

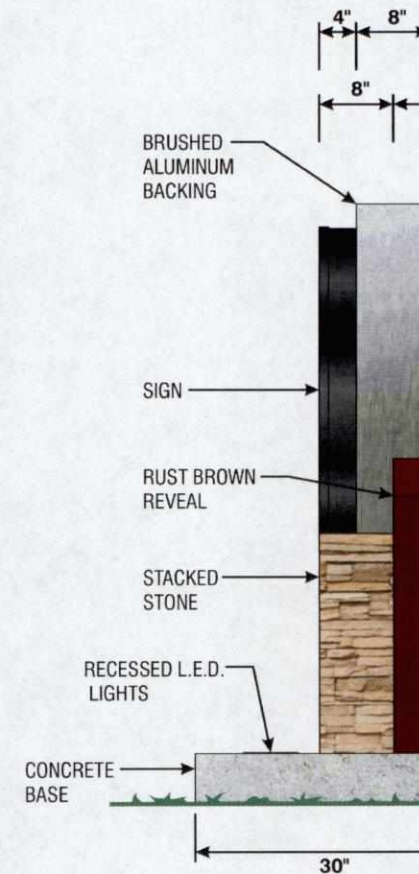
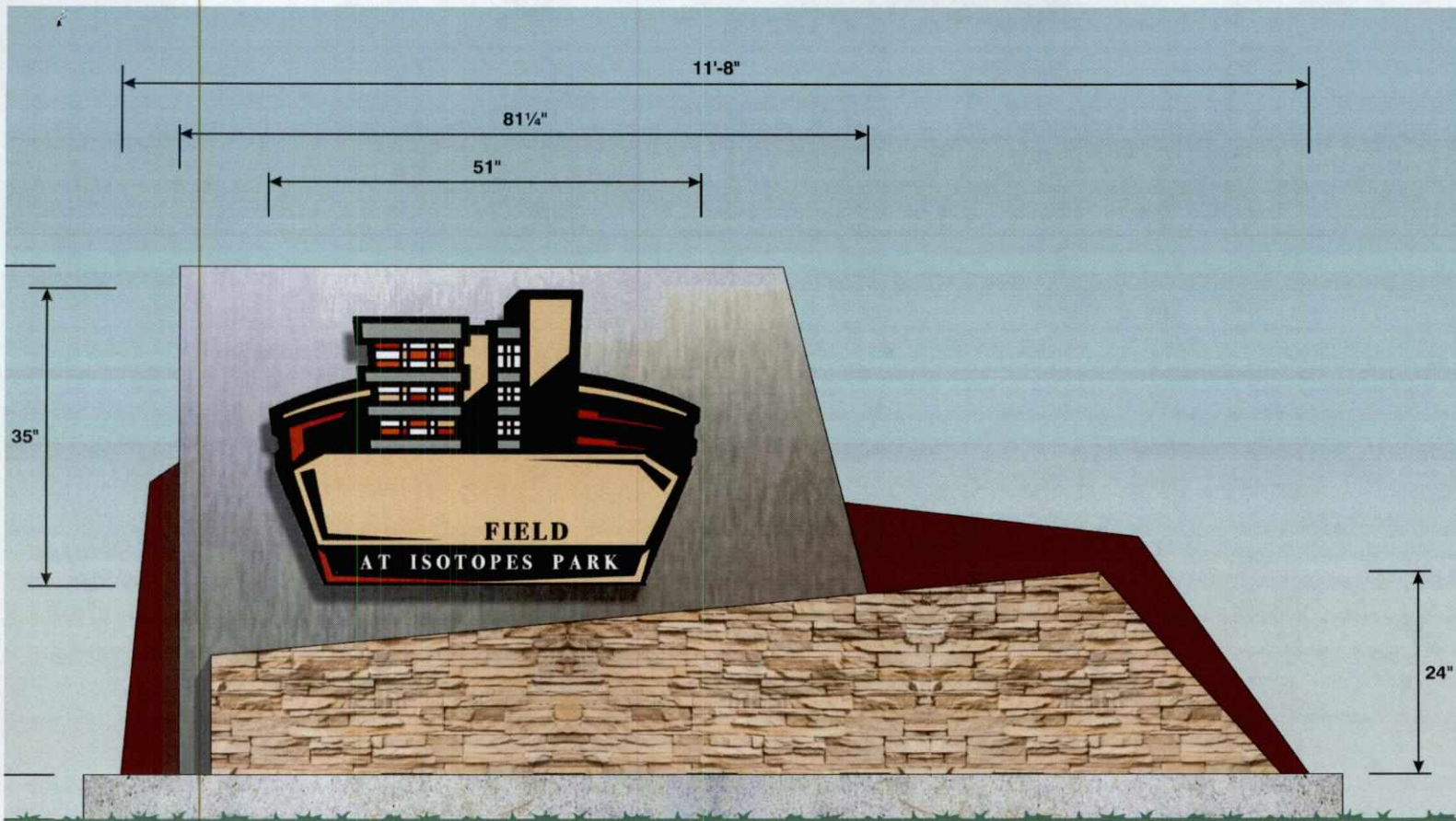
APPROVED FOR PRODUCTION:

CUSTOMER APPROVAL:

REVISED	12-23-19	1-23-20		
	1-8-20			
	1-9-20			
	1-20-20			

ZEON signs
EPNM, INC.

AL-EPNM, INC.
ELECTRICAL PRODUCTS COMPANY
2024 5th St. NW Albuquerque, NM 87102
(505) 243-3774 Toll Free: 800-444-7407
Fax: (505) 243-5575



END VIEW

SINGLE FACE ILLUMINATED MONUMENT DISPLAY

IGN CABINET: FABRICATED BRUSHED ALUMINUM WITH ROUTED COPY BACKED WITH VINYL ON WHITE LEXAN

REVEAL: FABRICATED ALUMINUM REVEAL PAINTED TO MATCH RUST BROWN ON BUILDING

FAUX STONE: FABRICATED ALUMINUM WITH FAUX STACKED STONE FACADE MOUNTED ON A CONCRETE PAD

SIGNS REQUIRED: ONE LOCATED BY FIRST BASE ENTRANCE AND ONE BY THIRD BASE ENTRANCE

(B)



WEST ELEVATION

EPNM, INC.
 SIGN PRODUCTS COMPANY
 10001 St. NW Albuquerque, NM 87102
 505-377-1111 Toll Free: 800-444-7407
 Fax: (505) 243-3575

THIS DESIGN IS THE EXCLUSIVE PROPERTY OF EPNM, INC. AND CANNOT BE REPRODUCED EITHER IN WHOLE OR IN PART WITHOUT THEIR WRITTEN PERMISSION.

PIPE SIZES(S) AND/OR SPLICES MAY CHANGE THE ARTIST CONCEPT DEPENDING ON ENGINEERING CALCULATIONS FOR FINAL INSTALLATION.

ACTUAL SIZE OF SIGN AND COPY FROM SCALED DRAWING MAY VARY 1" ±. COLOR ON THIS PRESENTATION DOES NOT REPRESENT THE EXACT MATERIAL COLOR SPECIFIED. SEE CHART(S) FOR EXACT APPEARANCE OF COLORS SPECIFIED.

TITLE: ISOTOPES PARK

SCALE: 3/4" = 1'-0"

SALES: JIM MITCHELL

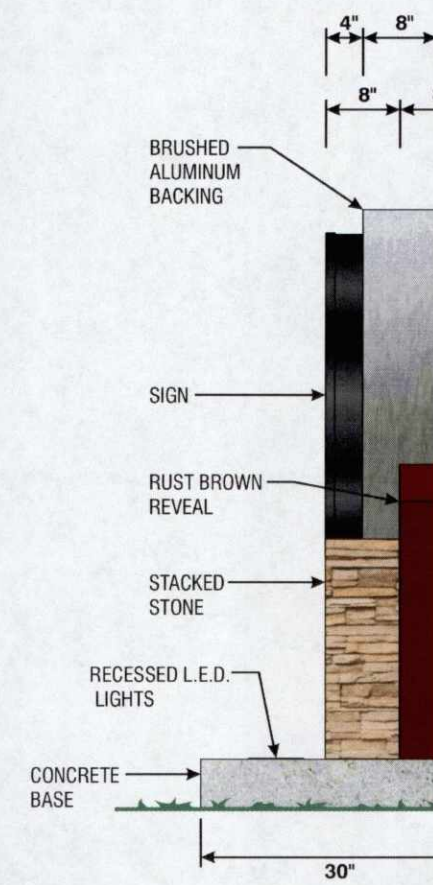
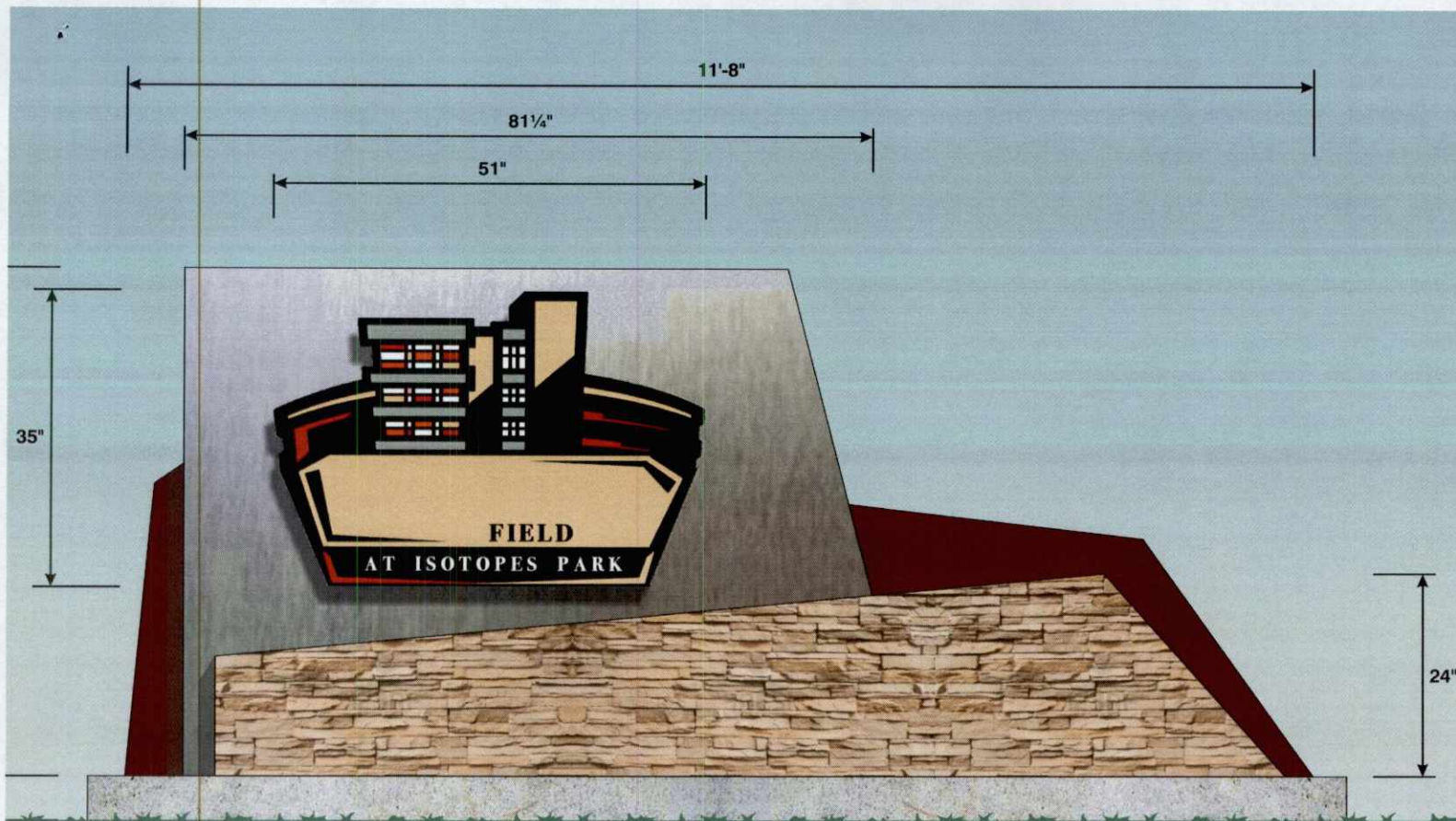
DESIGN BY: R. GONZALES

DRWG NO: 1119 - 537

CUSTOMER APPROVAL:

APPROVED FOR PRODUCTION:

REVISED	12-23-19
	1-8-20
	1-20-20
	1-24-20



SINGLE FACE ILLUMINATED MONUMENT DISPLAY

SIGN CABINET: FABRICATED BRUSHED ALUMINUM WITH ROUTED COPY BACKED WITH VINYL ON WHITE LEXAN

REVEAL: FABRICATED ALUMINUM REVEAL PAINTED TO MATCH RUST BROWN ON BUILDING

BASE: FABRICATED ALUMINUM WITH FAUX STACKED STONE FACADE AND MOUNTED ON A CONCRETE PAD

2 SIGNS REQUIRED: ONE LOCATED BY FIRST BASE ENTRANCE AND ONE BY THIRD BASE ENTRANCE



SOUTH ELEVATION

END VIEW

EPNM, INC.
 METAL PRODUCTS COMPANY
 10000 1st St. NW Albuquerque, NM 87102
 505-377-1111 Toll Free: 800-444-7407
 Fax: (505) 243-3575

THIS DESIGN IS THE EXCLUSIVE PROPERTY OF EPNM, INC. AND CANNOT BE REPRODUCED EITHER IN WHOLE OR IN PART WITHOUT THEIR WRITTEN PERMISSION.

PIPE SIZES(S) AND/OR SPLICES MAY CHANGE THE ARTIST CONCEPT DEPENDING ON ENGINEERING CALCULATIONS FOR FINAL INSTALLATION.

ACTUAL SIZE OF SIGN AND COPY FROM SCALED DRAWING MAY VARY 1" ±
 COLOR ON THIS PRESENTATION DOES NOT REPRESENT THE EXACT MATERIAL COLOR SPECIFIED. SEE CHART(S) FOR EXACT APPEARANCE OF COLORS SPECIFIED.

TITLE: ISOTOPES PARK

SCALE: 3/4" = 1'-0"

SALES: JIM MITCHELL

DESIGN BY: R. GONZALES

DRWG NO: 1119 - 523

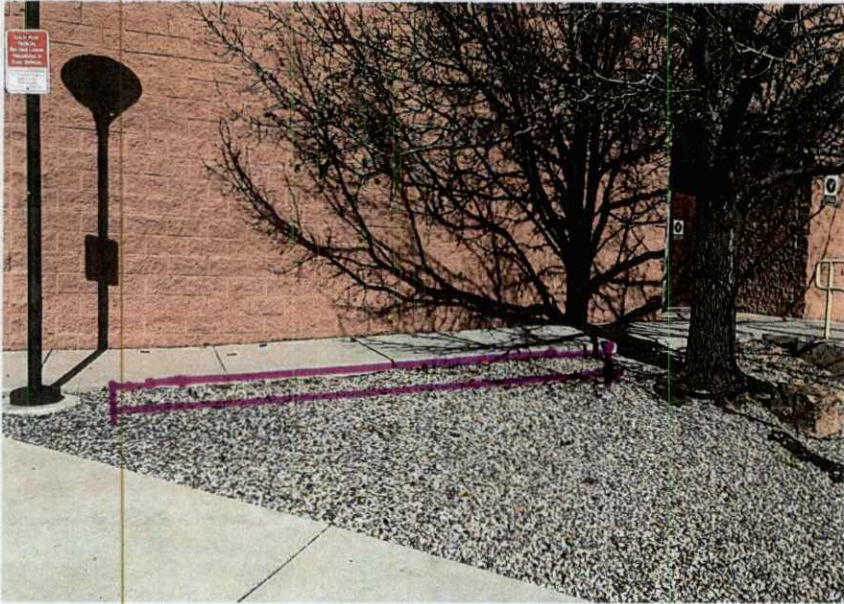
CUSTOMER APPROVAL:

APPROVED FOR PRODUCTION:

REVISED	11-15-19	1-24-20
	12-23-19	
	1-8-20	
	1-20-20	



A



©



©

APPROX
FOOTPRINT OF
MONUMENT SIGNS

1-22-70