



DEVELOPMENT REVIEW BOARD  
SUPPLEMENTAL SUBMITTAL

**(Deadline is Friday at noon unless noted on 2019 agenda – late submittals will not be accepted unless approved by the DRB)**

PROJECT NO. PR-2020-002411  
Application No. \_\_\_\_\_

TO:

- Planning Department/Chair
- Hydrology
- Transportation Development
- Albuquerque/ Bernalillo Co. WUA
- Code Enforcement

\*(Please attach this sheet with each collated set for each board member)

**NOTE: ELECTRONIC VERSION (ie disk, thumbdrive) is Required. Submittal will not be accepted without.**

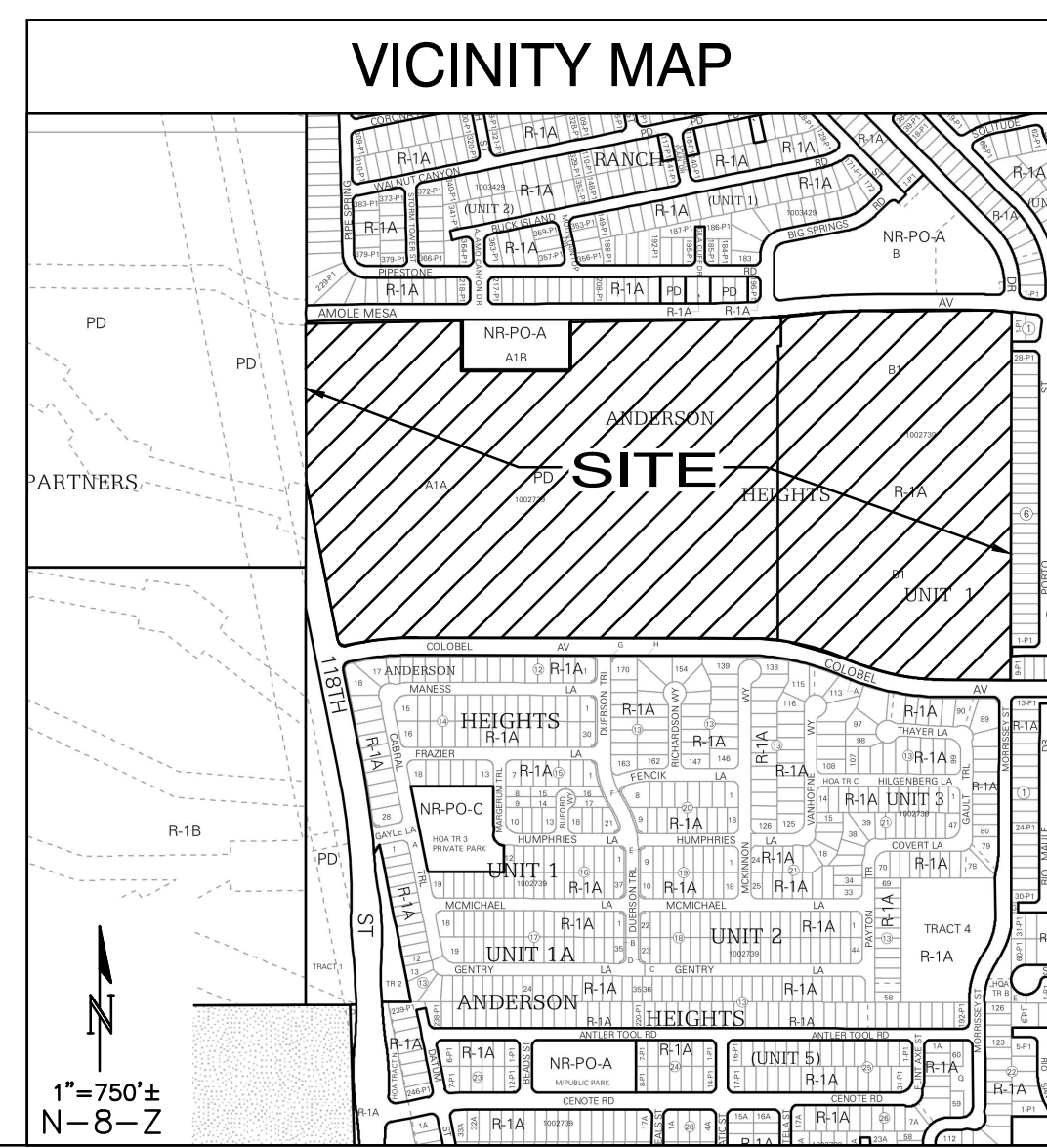
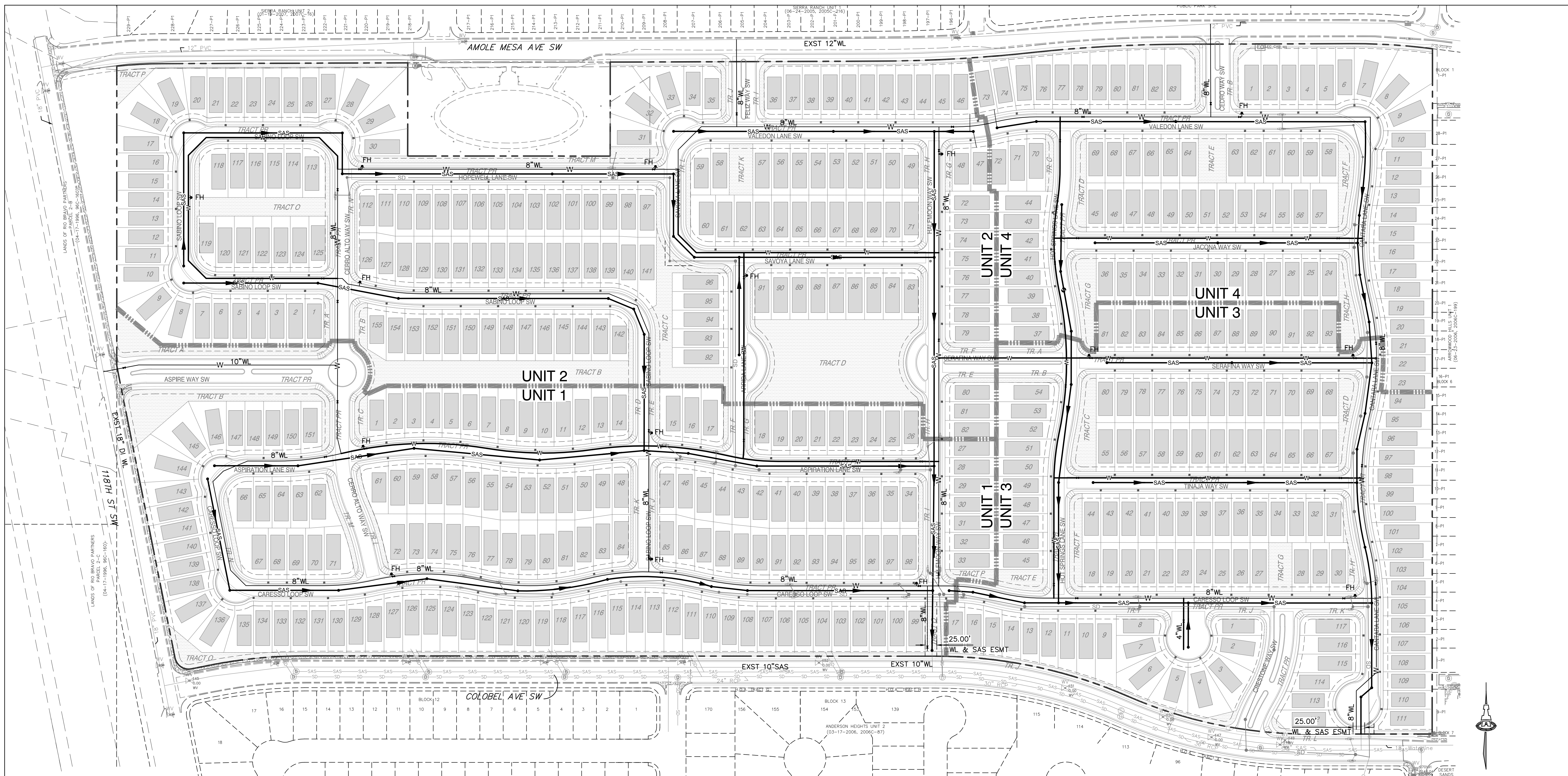
DRB SCHEDULED HEARING DATE: JULY 8 HEARING DATE OF DEFERRAL: \_\_\_\_\_

SUBMITTAL DESCRIPTION: Conceptual utility plan in support of Preliminary Plat DRB Submittal

CONTACT NAME: Åsa Nilsson-Weber

TELEPHONE: 505-206-3774 EMAIL: asaw@iacivil.com





**GENERAL NOTES**

1. WATER PRESSURE ZONE 2W ELEV. UPPER ELEV.=5257.7 (5255+2.7 FOR DATUM ADJUSTMENT)
2. ALL SANITARY SEWER LINES ARE 8" PVC. EXCEPT EXISTING LINE IN COLOBEL THAT IS 10" PVC.
3. ALL WATER LINE MATERIAL IS PVC, EXCEPT AS NOTED ON THE 118TH ST. WATERLINE (DI).
4. PROPOSED WATER LINE SIZES ARE 6", EXCEPT WHERE OTHERWISE NOTED ON PLAN.

**LEGEND**

—SAS—	PROPOSED 8" SANITARY SEWER LINE
—W—	PROPOSED WATERLINE (6" UNLESS OTHERWISE NOTED)
▲FH	PROPOSED FIRE HYDRANT
■	PROPOSED GATE VALVE
—SD—	PROPOSED STORM DRAIN
—SAS—	EXISTING SANITARY SEWER LINE
—W—	EXISTING WATERLINE
—SD—	EXISTING STORM DRAIN

**Isaacson & Arfman, Inc.**  
Civil Engineering Consultants

128 Monroe Street NE  
Albuquerque, NM 87108  
505-268-8828 | www.iacivil.com

This design, calculations, and concepts are owned by and remain the property of Isaacson & Arfman, Inc. and no part thereof shall be utilized by any person, firm or corporation for any purpose whatsoever except with the written permission of Isaacson & Arfman, Inc. ©

<b>ASPIRE SUBDIVISION UNITS 1-4 SUCCESS LAND HOLDINGS, LLC</b>			
<b>CONCEPTUAL MASTER UTILITY PLAN</b>			
Date:	No. Revision:	Date:	Job No.
05/2020			2290
Drawn By:			CU-100
thor			
Ckd By:			SH OF
ANW			

W:\PROJECTS\2020-2024\ASPIRE\DWG\ASPIRE\_CU-100.dwg, 05/11/2020 11:32 AM  
 LANDS OF RIO BRAVO PARTNERS, PARCEL 2-B (04-17-1996, 88C-160)  
 LANDS OF RIO BRAVO PARTNERS, PARCEL C (04-17-1996, 88C-160)