

**SKETCH PLAT OF
TRACT A-1
FAIRVIEW PARK CEMETARY
SITUATE WITHIN
SECTION 27, T. 10 N., R. 3 E., N.M.P.M.
CITY OF ALBUQUERQUE
BERNALILLO COUNTY, NEW MEXICO
DECEMBER 2019**

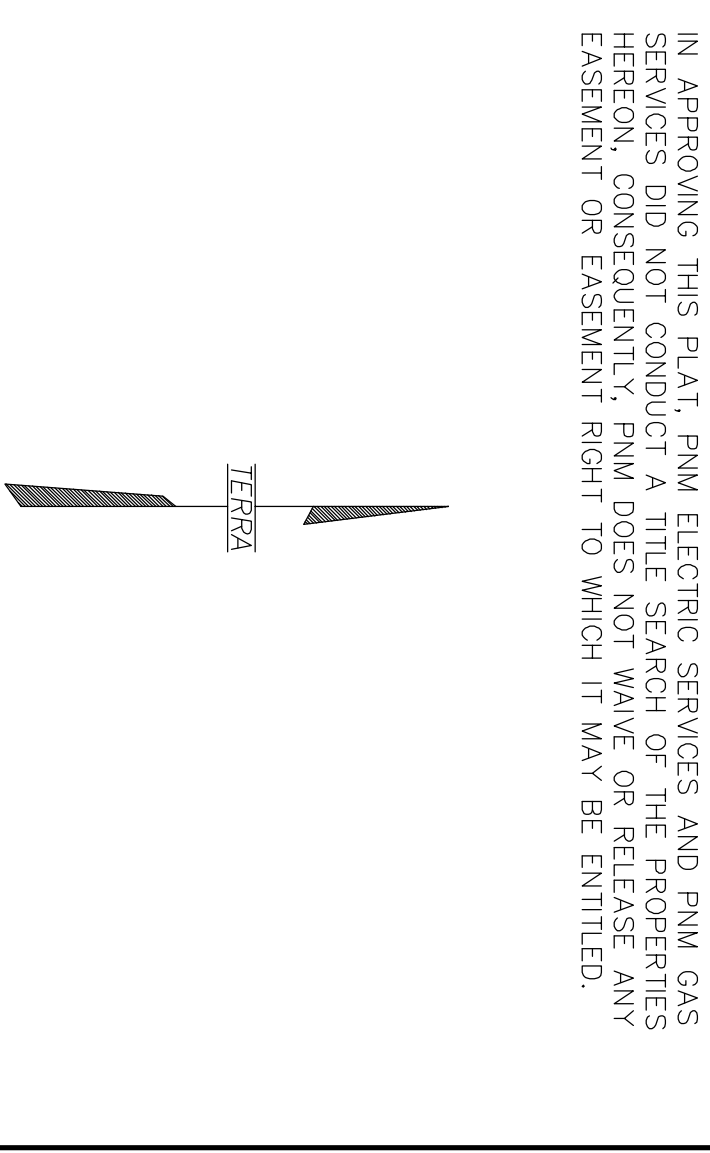
PUBLIC UTILITY EASEMENT NOTE:

PUBLIC UTILITY EASEMENTS SHOWN ON THIS PLAT ARE GRANTED FOR THE COMMON AND JOINT USE OF:

1. PNM ELECTRIC SERVICES FOR INSTALLATION, MAINTENANCE, AND SERVICE OF OVERHEAD AND UNDERGROUND ELECTRICAL LINES, COMMUNICATION FACILITIES, TRANSFORMERS, POLES AND ANY OTHER EQUIPMENT, FIXTURES, STRUCTURES AND RELATED FACILITIES REASONABLY NECESSARY TO PROVIDE ELECTRICAL SERVICE.
2. PNM GAS SERVICES FOR INSTALLATION, MAINTENANCE, AND SERVICE OF NATURAL GAS LINES, VALVES AND OTHER EQUIPMENT AND FACILITIES REASONABLY NECESSARY TO PROVIDE NATURAL GAS.
3. QWEST CORPORATION FOR THE INSTALLATION, MAINTENANCE AND SERVICE OF ALL BURIED AND AERIAL COMMUNICATION LINES AND OTHER RELATED EQUIPMENT AND FACILITIES REASONABLY NECESSARY TO PROVIDE COMMUNICATION SERVICES, INCLUDING BUT NOT LIMITED TO ABOVE GROUND PEDESTALS AND CLOSURES.
4. COMCAST CABLE FOR THE INSTALLATION, MAINTENANCE AND SERVICE OF SUCH LINES, CABLES, AND OTHER RELATED EQUIPMENT AND FACILITIES REASONABLY NECESSARY TO PROVIDE CABLE TV SERVICE.

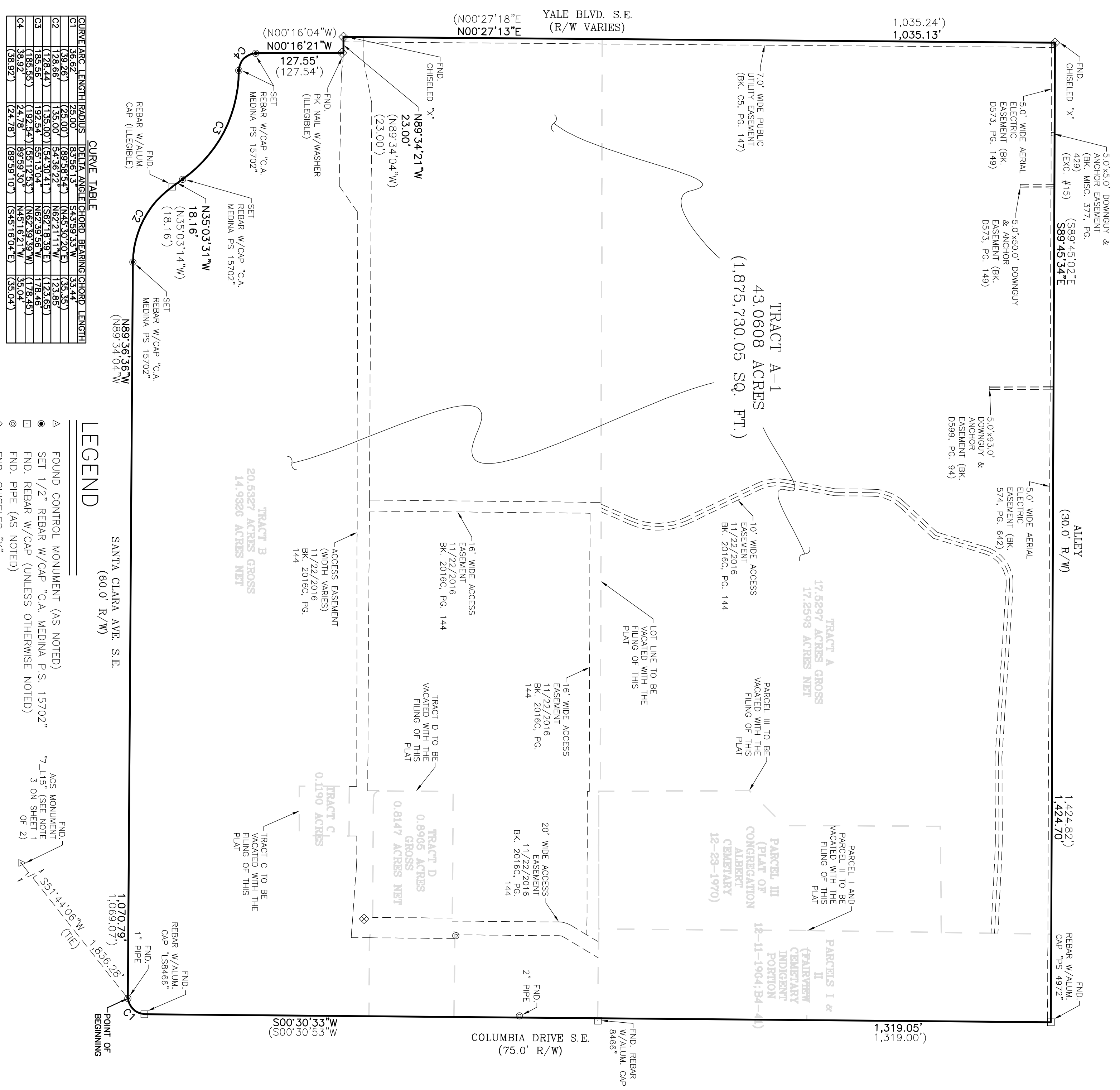
INCLUDED IS THE RIGHT TO BUILD, REBUILD, CONSTRUCT, RECONSTRUCT, LOCATE, RELOCATE, CHANGE, REMOVE, MODIFY, RENEW, OPERATE AND MAINTAIN FACILITIES FOR THE PURPOSES DESCRIBED ABOVE, TOGETHER WITH FREE ACCESS TO, FROM, AND OVER SAID EASEMENTS, INCLUDING SUFFICIENT WORKING AREA SPACE FOR ELECTRIC TRANSFORMERS, WITH THE RIGHT AND PRIVILEGE TO TRIM AND REMOVE TREES, SHRUBS OR BUSHES WHICH INTERFERE WITH THE PURPOSES SET FORTH HEREIN. NO BUILDING, SIGN, POOL (ABOVE GROUND OR SUBSURFACE), HOT TUB, CONCRETE OR WOOD POOL DECKING, OR OTHER STRUCTURE SHALL BE ERECTED OR CONSTRUCTED ON SAID EASEMENTS, NOR SHALL ANY WELL BE DRILLED OR OPERATED THEREON. PROPERTY OWNERS SHALL BE SOLELY RESPONSIBLE FOR CORRECTING ANY VIOLATIONS OF NATIONAL ELECTRICAL SAFETY CODE CAUSED BY CONSTRUCTION OR POOLS, DECKING OR ANY STRUCTURES ADJACENT TO, WITHIN OR NEAR EASEMENTS SHOWN ON THIS PLAT.

EASEMENTS FOR ELECTRIC TRANSFORMERS/SWITCHGEARS, AS INSTALLED, SHALL EXTEND TEN FEET (10'-) IN FRONT OF TRANSFORMER/SWITCHGEAR DOOR AND FIVE FEET (5') ON EACH SIDE.
IN APPROVING THIS PLAT, PNM ELECTRIC SERVICES AND PNM GAS SERVICES DID NOT CONDUCT A TITLE SEARCH OF THE PROPERTIES HEREON, CONSEQUENTLY, PNM DOES NOT WAIVE OR RELEASE ANY EASEMENT OR EASEMENT RIGHT TO WHICH IT MAY BE ENTITLED.



GRAPHIC SCALE
(IN FEET)
1 inch = 100 ft.

TERRALAND SURVEYS, LLC
P.O. BOX 2532 • CORRALITOS, NM 87048 • (505) 792-0513



CURVE ARC	LENGTH	RADIUS	DELTA ANGLE	CHORD BEARING	CHORD LENGTH
C1	39.62'	29.00'	53.36°13'	S43.39°33'W	39.47'
C2	138.28'	135.00'	52.32°21'	N42.31°14'W	132.98'
C3	185.56'	182.54'	54.30°24'	S62.18°39'E	178.46'
C4	38.92'	24.78'	89.59°30'	N45.16°21'W	35.04'

LEGEND
 ▲ FOUND CONTROL MONUMENT (AS NOTED)
 ● SET 1/2" REBAR W/CAP "C.A. MEDINA P.S. 15702"
 □ FND. REBAR W/CAP (UNLESS OTHERWISE NOTED)
 ⊙ FND. PIPE (AS NOTED)
 ⊠ FND. CHISELED "X"

SANTA CLARA AVE. S.E.
(60.0' R/W)

POINT OF BEGINNING
1,070.79'
1,069.07'

1,836.25'
S51°44'06"W (IT)

FND. REBAR W/ALUM. CAP "LSR466"

FND. 1" PIPE

FND. REBAR W/CAP "C.A. MEDINA PS 15702"

FND. CHISELED "X"

FND. CHISELED "X"

FND. CHISELED "X"

FND. CHISELED "X"

FND. CHISELED "X"

FND. CHISELED "X"

FND. CHISELED "X"

FND. CHISELED "X"

FND. CHISELED "X"

FND. CHISELED "X"

FND. CHISELED "X"

FND. CHISELED "X"

FND. CHISELED "X"

FND. CHISELED "X"

FND. CHISELED "X"

FND. CHISELED "X"

FND. CHISELED "X"

FND. CHISELED "X"

FND. CHISELED "X"

FND. CHISELED "X"

FND. CHISELED "X"

FND. CHISELED "X"

FND. CHISELED "X"

FND. CHISELED "X"

FND. CHISELED "X"

FND. CHISELED "X"

FND. CHISELED "X"

FND. CHISELED "X"

FND. CHISELED "X"

FND. CHISELED "X"

FND. CHISELED "X"

FND. CHISELED "X"

FND. CHISELED "X"

FND. CHISELED "X"

FND. CHISELED "X"

FND. CHISELED "X"

FND. CHISELED "X"