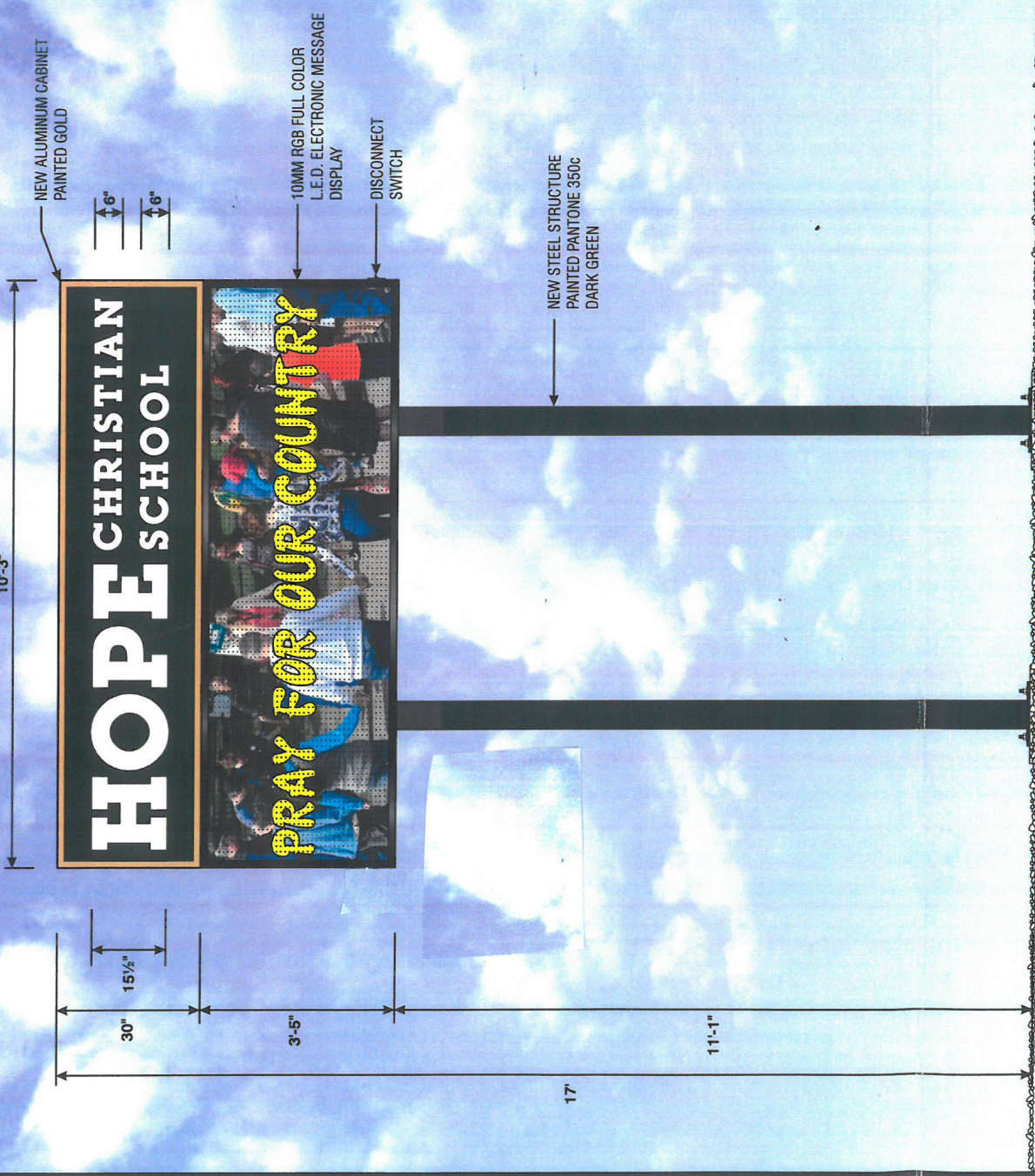


10'-3"

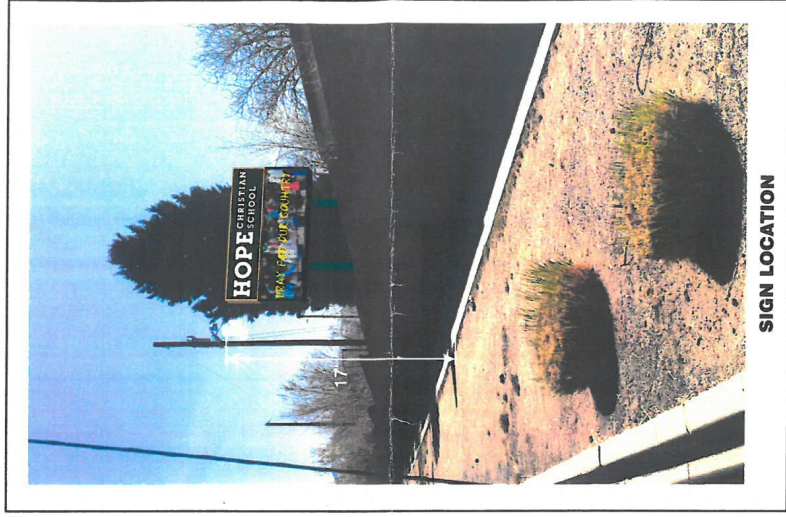


**NEW DOUBLE FACE ILLUMINATED FREE-STANDING DISPLAY**

- NEW DIGITALLY PRINTED GRAPHIC ON CLEAR VINYL FILM APPLIED ON WHITE LEXAN FACES
- FABRICATE NEW ALUMINUM CABINET PAINTED GOLD
- INTERNALLY ILLUMINATED WITH WHITE L.E.D. MODULES
- NEW SIGNAGE WELDED TO EXISTING STEEL SQUARE TUBE SUPPORTS

**REVISED**

4-1-21  
4-22-21

**SIGN LOCATION**



**AL-**  
**EPNM, INC.**  
ELECTRICAL PRODUCTS COMPANY  
2022 5th St NW, Albuquerque, NM 87103  
(505) 233-3771 • Toll Free: 800-344-7407  
Fax: (505) 243-3575

**TITLE:** HOPE CHRISTIAN SCHOOL

**SCALE:** 1/2" = 1'-0"

**SALES:** CURTIS MOTT

**DESIGN BY:** R. GONZALES

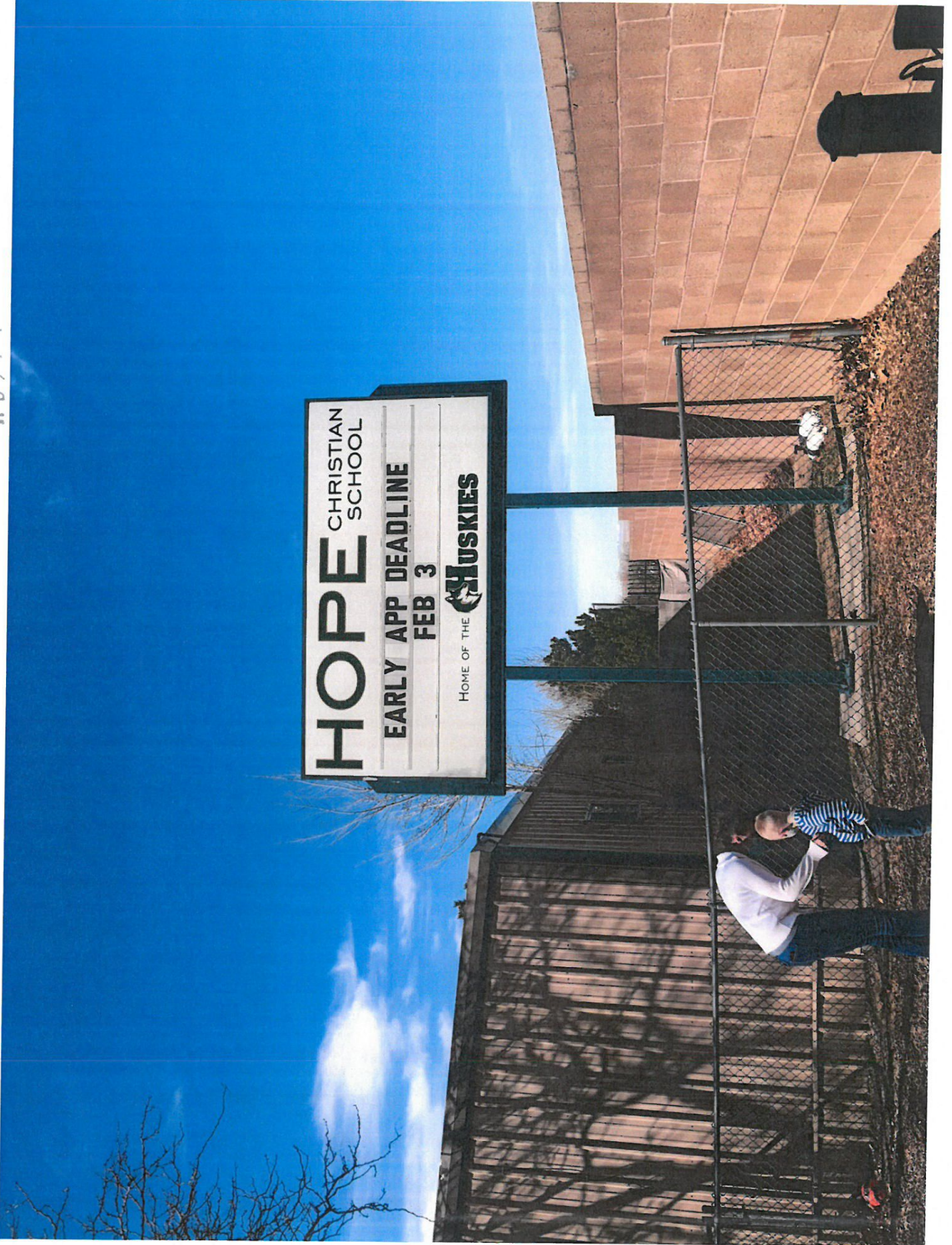
**DRAWG NO:** 321 - 060

**CUSTOMER APPROVAL:**

**APPROVED FOR PRODUCTION:**

THIS IS A LEGAL TITLE EXCLUSIVE PROPERTY OF EPNM, INC. WWW.EPNM.COM IS. REPRODUCED UNDER THE PROTECTION OF TRADE SECRET LAWS. ANY UNAUTHORIZED REPRODUCTION OR USE OF THE INFORMATION CONTAINED HEREIN WITHOUT THE WRITTEN PERMISSION OF EPNM, INC. IS STRICTLY PROHIBITED. THE EXACT ORIGINAL COLOR SHOULD BE USED FOR ALL REPRODUCTIONS. PLEASE REFER TO THE COLOR CHART FOR THE EXACT ORIGINAL COLOR. ANY REPRODUCTION OF THIS INFORMATION WITHOUT THE WRITTEN PERMISSION OF EPNM, INC. IS STRICTLY PROHIBITED. ANY REPRODUCTION OF THIS INFORMATION WITHOUT THE WRITTEN PERMISSION OF EPNM, INC. IS STRICTLY PROHIBITED.

AD971



AD971

7

P

AD971



Google

AD971

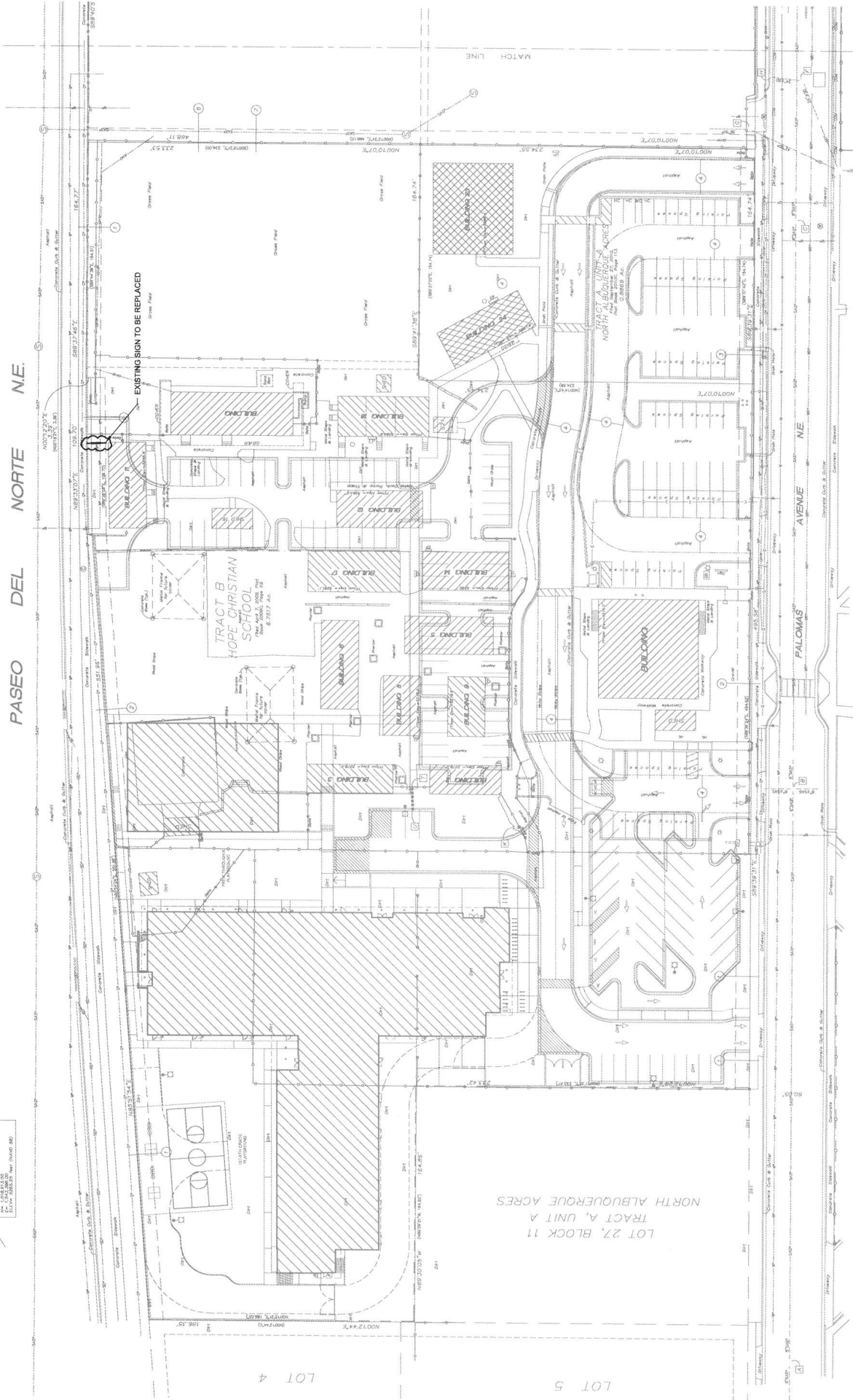
# Untitled Map

Write a description for your map.

## Legend

- 6721 Palomas Ave NE
- Edmund G Ross Elementary School
- Feature 1
- Leslie's Pool Supplies
- Weck's Breakfast Lunch





1 ARCHITECTURAL SITE PLAN - OVERALL  
1" = 30'-0"