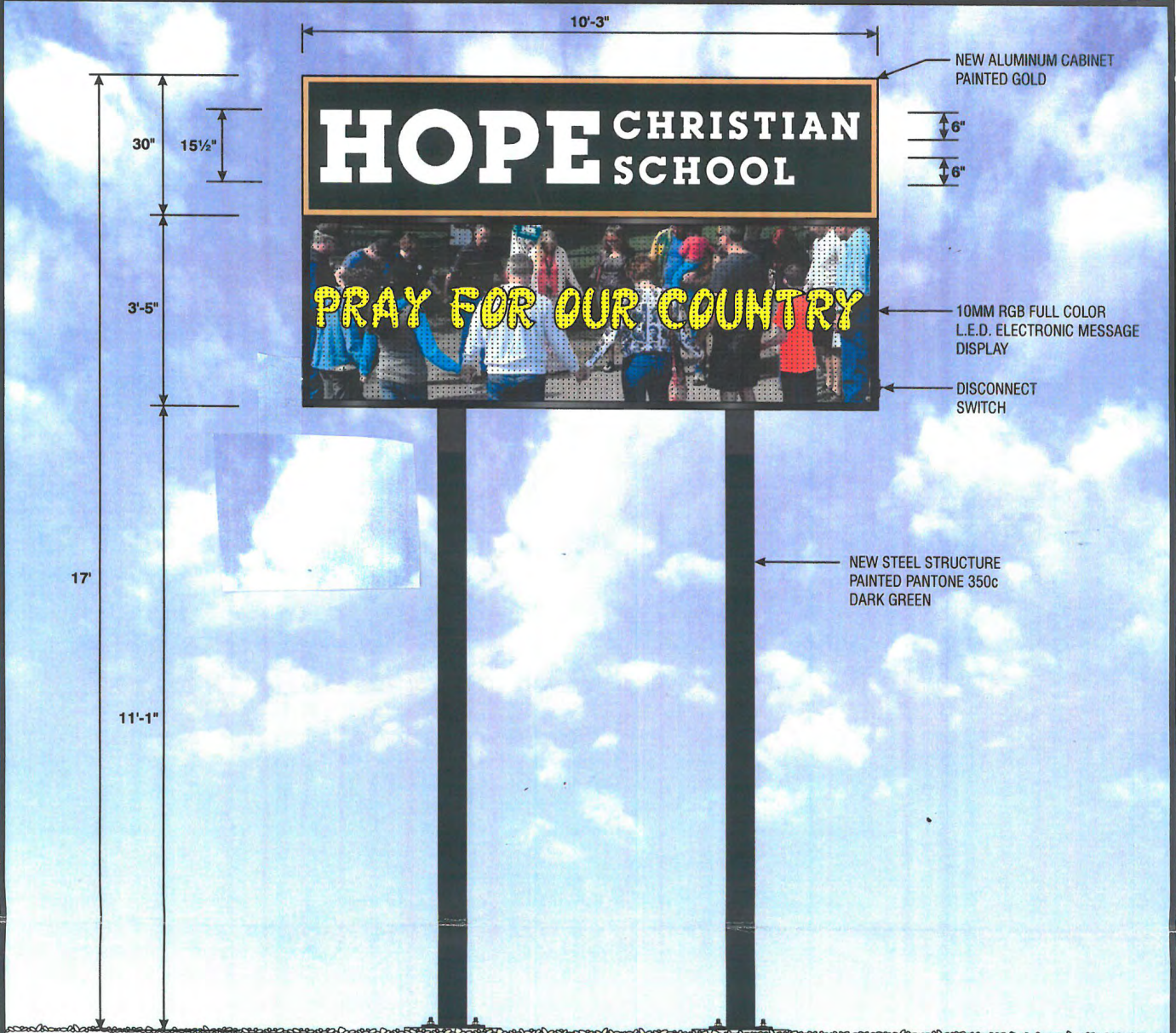


ADMINISTRATIVE AMENDMENT

FILE # _____ PROJECT # _____

APPROVED BY

DATE



NEW DOUBLE FACE ILLUMINATED FREE-STANDING DISPLAY

- NEW DIGITALLY PRINTED GRAPHIC ON CLEAR VINYL FILM APPLIED ON WHITE LEXAN FACES
- FABRICATE NEW ALUMINUM CABINET PAINTED GOLD
- INTERNALLY ILLUMINATED WITH WHITE L.E.D. MODULES
- NEW SIGNAGE WELDED TO EXISTING STEEL SQUARE TUBE SUPPORTS

REVISED
4-1-21
4-22-21



SIGN LOCATION

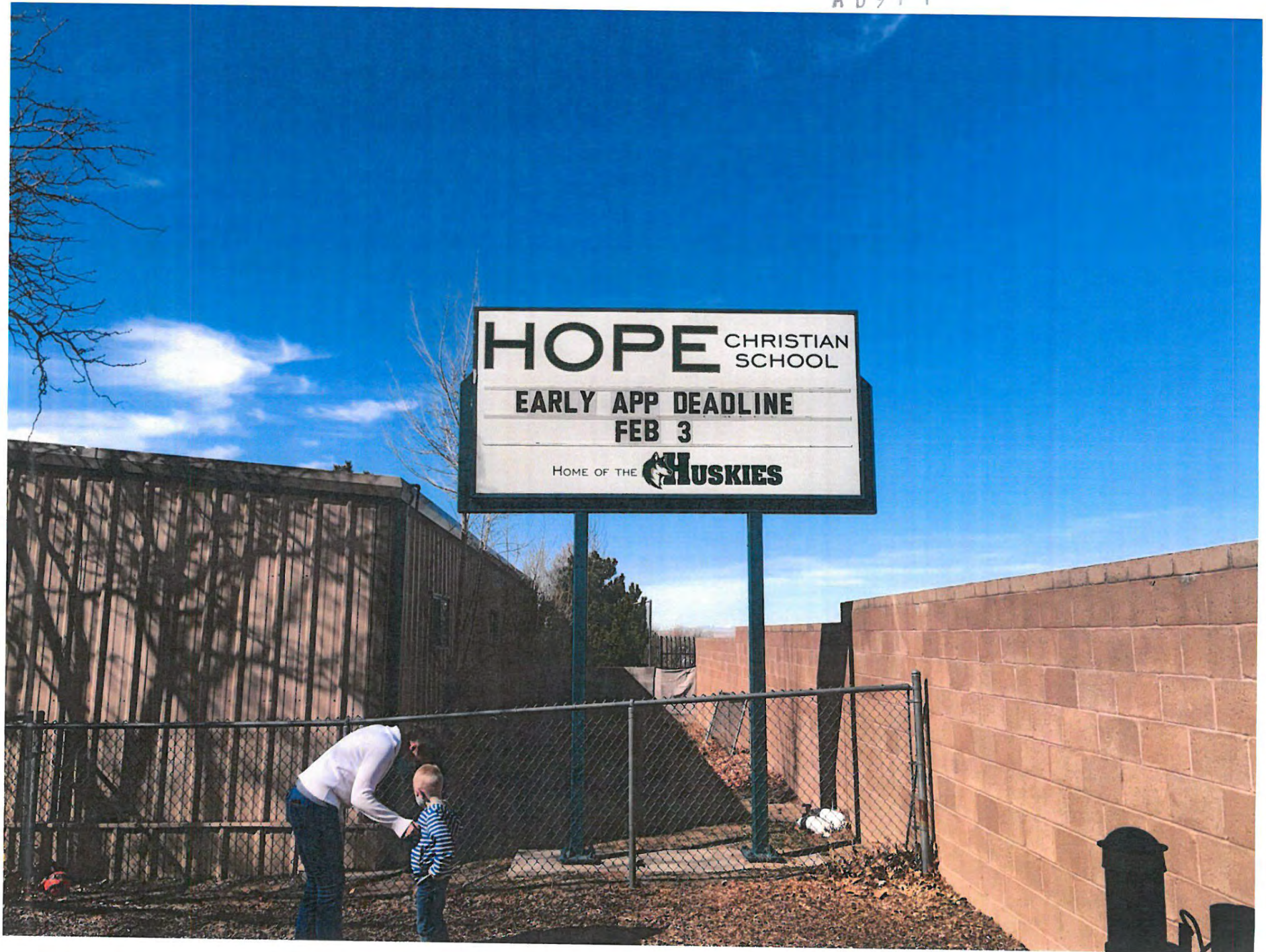
AL-
ZEON signs
EPNM, INC.
 ELECTRICAL PRODUCTS COMPANY
 2020 5th St. NW Albuquerque, NM 87102
 (505) 243-3771 Toll Free: 800-446-7407
 Fax: (505) 243-3575

THIS DESIGN IS THE EXCLUSIVE PROPERTY OF EPNM, INC. AND CANNOT BE REPRODUCED EITHER IN WHOLE OR IN PART WITHOUT THE WRITTEN CONSENT OF EPNM, INC.
 COLOR OR THE REPRESENTATION DOES NOT REPRESENT THE EXACT MATERIAL COLOR SPECIFIED. SEE SAMPLES FOR EXACT APPEARANCE. IF COLORS APPEAR TO VARY, THESE AND/OR SPICES MAY VARY. THE PRINTED COPY REPRESENTS THE ENGINEERING CALCULATIONS FOR THIS PROJECT. ACTUAL SIZE OF SIGN AND COPY PRINTING CALLED ON DRAWING MAY VARY.

TITLE: HOPE CHRISTIAN SCHOOL		SCALE: 1/2" = 1'- 0"		DRWG NO: 321 - 060		APPROVED FOR PRODUCTION:	
SALES: CURTIS MOTT		DESIGN BY: R. GONZALES		CUSTOMER APPROVAL:			

P

AD971



AD971

D

AD971






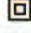

Google

AD971

Untitled Map

Write a description for your map.

Legend

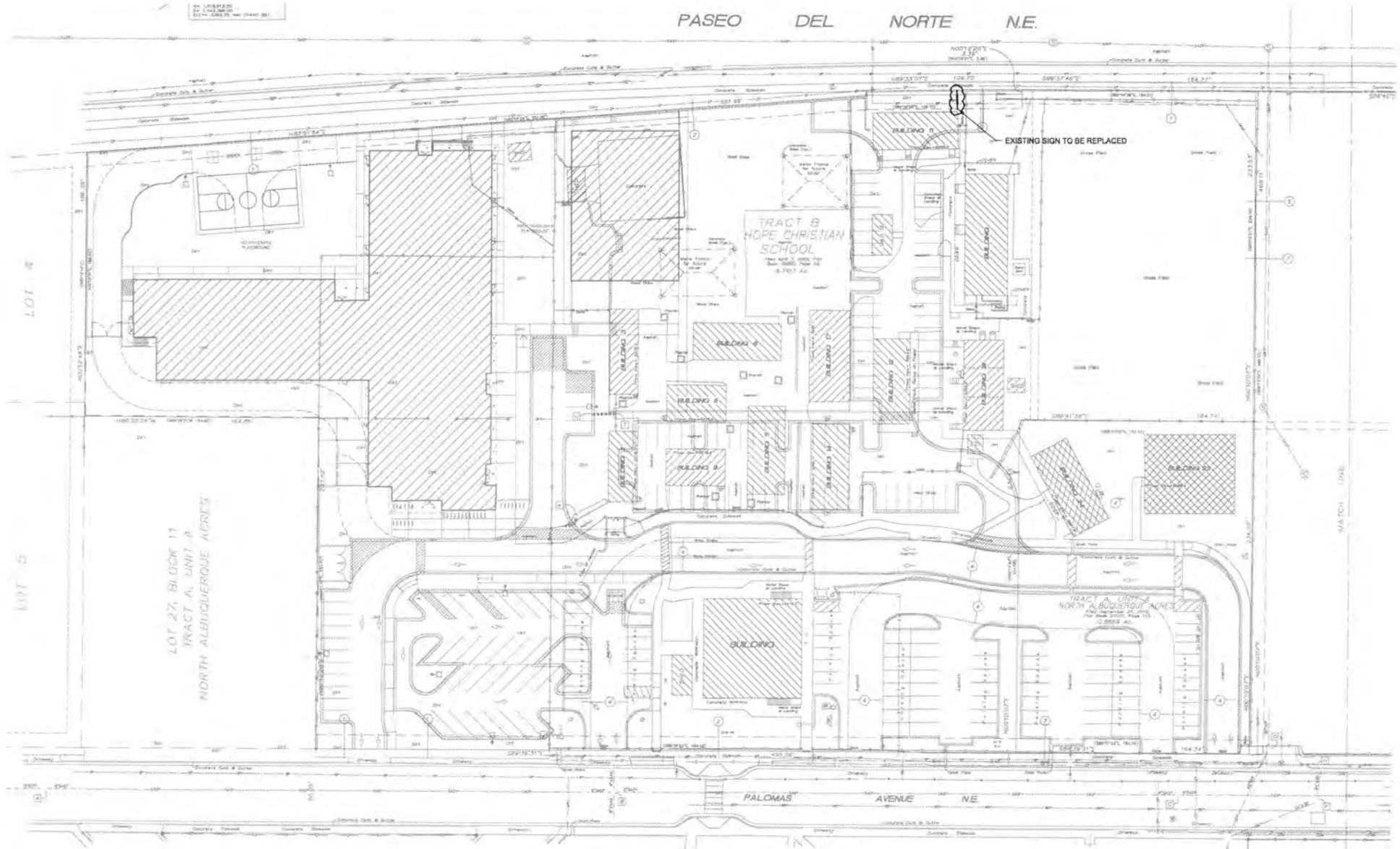
-  6721 Palomas Ave NE
-  Edmund G Ross Elementary School
-  Feature 1
-  Leslie's Pool Supplies
-  Weck's Breakfast Lunch

6721 Palomas Ave NE

Google Earth

© 2021 Google

100 ft



1 ARCHITECTURAL SITE PLAN - OVERALL
1" = 30'-0"