



Chick-fil-A
 5200 Buffington Road
 Atlanta, Georgia
 30349-2998



1700 INDUSTRIAL DRIVE
 SUITE B
 ROGERS, AR 72756
 479.986.440
 www.core-eng.com

CHICK-FIL-A
 ALBUQUERQUE, NM
 4001 COORS BLVD
 ALBUQUERQUE, NM 87120

FSR#04107
 BUILDING TYPE / SIZE: P12 SE LRG
 RELEASE: v2.18.08

REVISION SCHEDULE		
NO.	DATE	DESCRIPTION
1	10/30/18	SCHEMATIC DESIGN ISSUE

CONSTRUCTION DOCUMENTS	
CONSULTANT PROJECT #	25779
PRINTED FOR	CONSTRUCTION DOCUMENTS
DATE	06/26/19
DRAWN BY	C. ELIAS

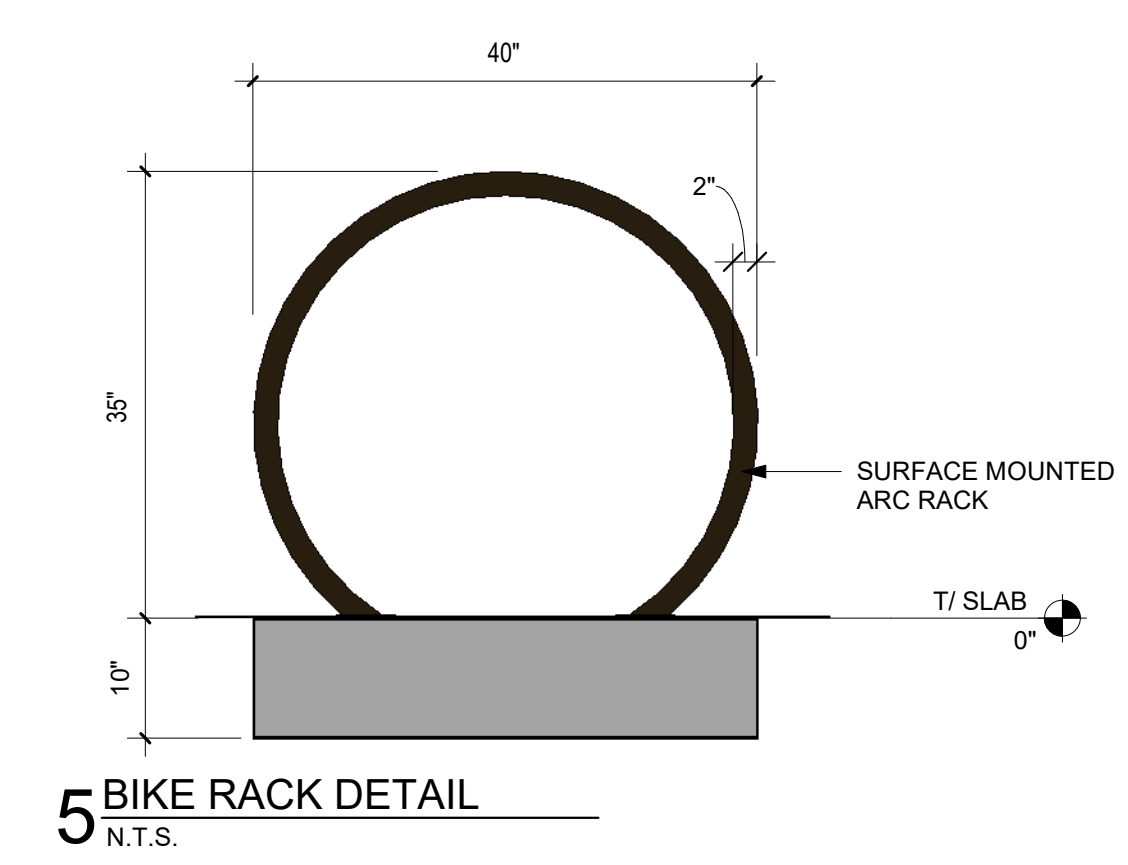
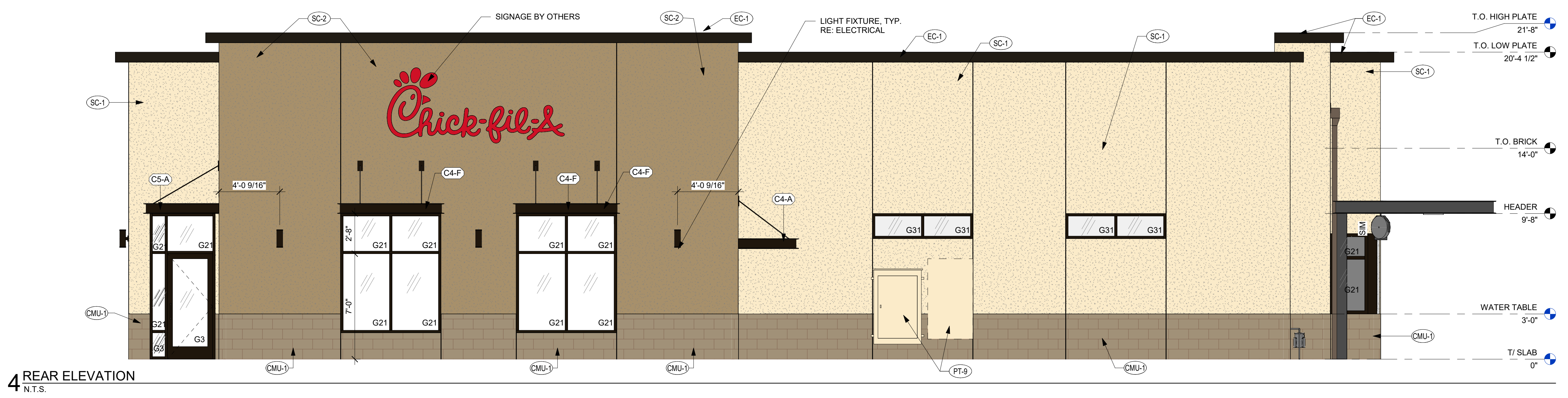
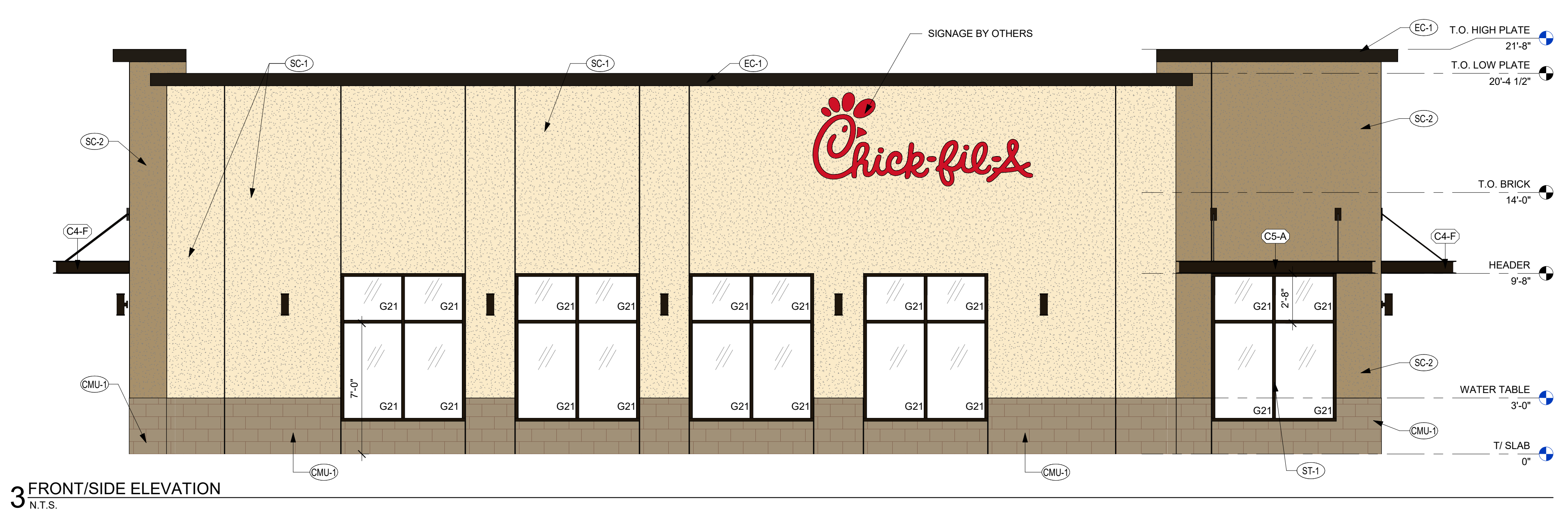
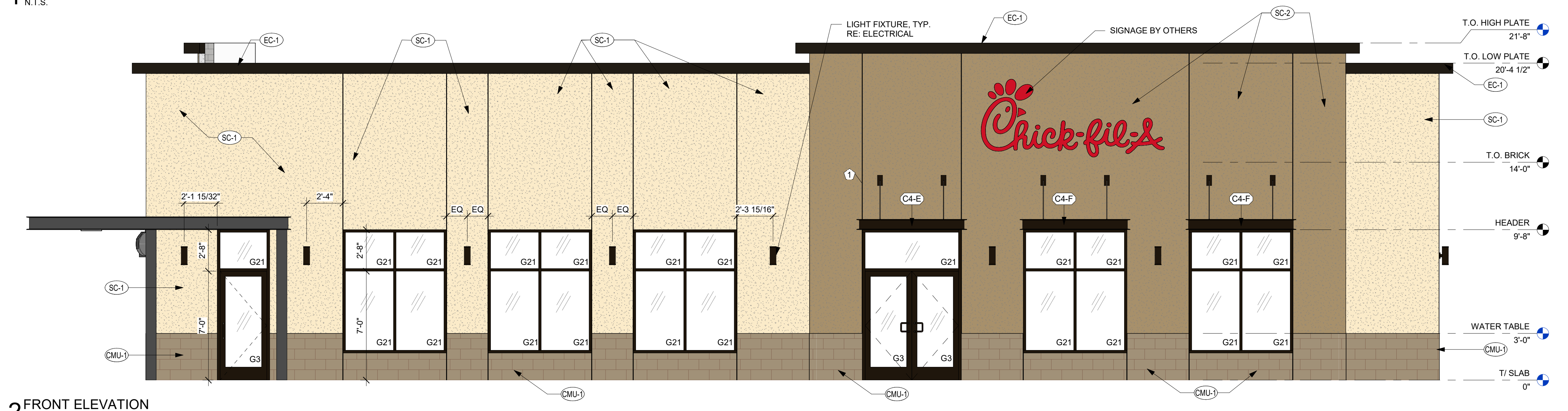
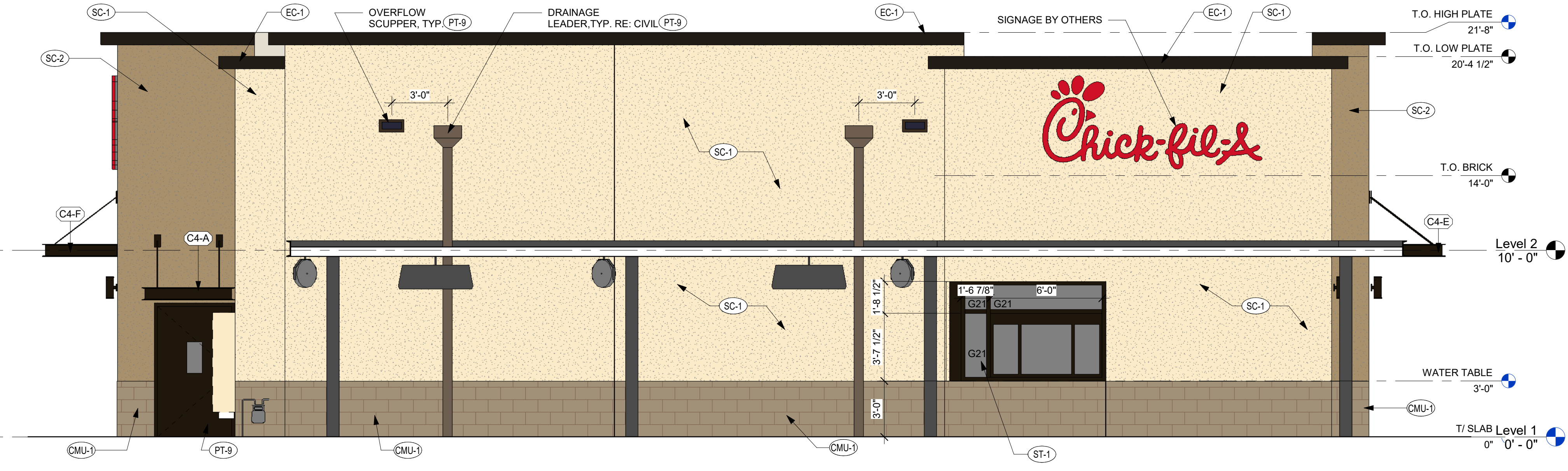
Information contained on this drawing and in all digital files produced for above named project may not be reproduced in any manner without express written or verbal consent from authorized project representatives.

SHEET EXTERIOR ELEVATIONS

SHEET NUMBER

A-02

FINISH SCHEDULE - EXTERIOR CUP						
MARK	DESCRIPTION	MANUFACTURER	MODEL NAME	MODEL NUMBER	COLOR	NOTE
EXTERIOR						
CMU-1	CMU BLOCK	ORCO	BURNISHED BROWN MEDIUM STANDARD FRP	-	BURNISHED BROWN MEDIUM DARK BRONZE (MATTE)	MATCHING NEUTRAL COLORED GROUT
EC-1	PARAPET WALL COPING	DUROLAST / EXCEPTIONAL METALS	-	-	-	-
PT-7	EXTERIOR PAINT	SHERWIN WILLIAMS	SHER-CRYL HIGH PERFORMANCE ACRYLIC	SW 2807	ROOKWOOD	REFUSE ENCLOSURE. FINISH: SEMI-GLOSS ON DOOR FRAMES, SATIN ON WALLS
PT-9	EXTERIOR PAINT	SHERWIN WILLIAMS	SHER-CRYL HIGH PERFORMANCE ACRYLIC	-	DARK BRONZE	-
SC-1	STUCCO	STO	GRECIAN IVORY	SW 7541	GRECIAN IVORY	FINISH: SAND MEDIUM
SC-2	STUCCO	STO	STUDIO TAUPE	SW 7549	STUDIO TAUPE	FINISH: SAND MEDIUM
ST-1	STOREFRONT	YKK	YES 45	-	DARK BRONZE (MATTE)	-



BIM 360/NIM_04107_Coors Blvd Albuquerque_FSR_P12_SE_LRG4107_Albuquerque NM_P12_SE_ARC_v2_18.08.rvt
 8/2/2019 11:02:02 AM
 SE-04107-A-02-EXTERIOR ELEVATIONS