



Chick-fil-A
 5200 Buffington Road
 Atlanta, Georgia
 30349-2998



1700 INDUSTRIAL DRIVE
 SUITE B
 ROGERS, AR 72756
 479.986.440
 www.core-eng.com

CHICK-FIL-A
 ALBUQUERQUE, NM
 4001 COORS BLVD
 ALBUQUERQUE, NM 87120

FSR#04107
 BUILDING TYPE / SIZE: P12 SE LRG
 RELEASE: v2.18.08

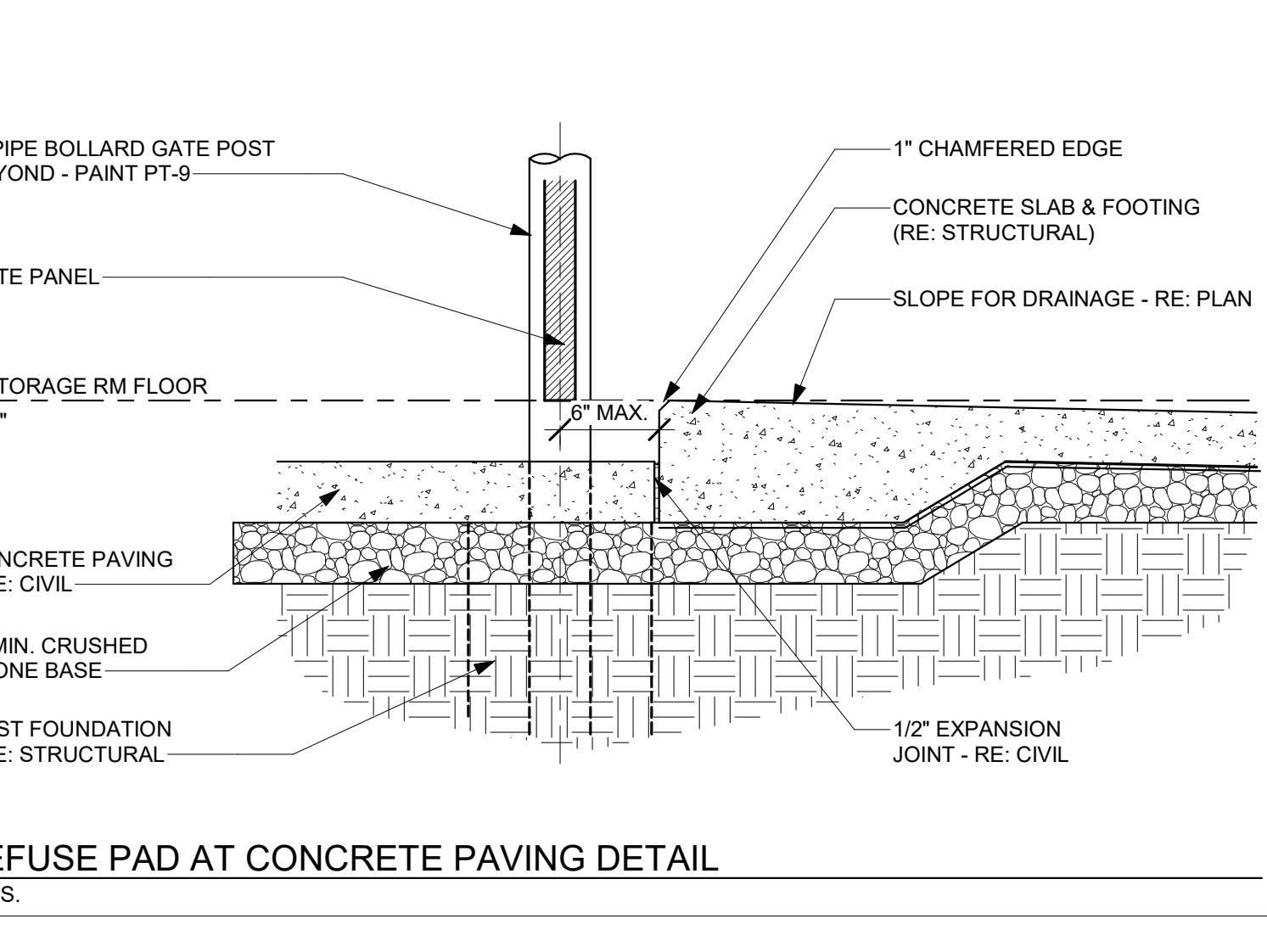
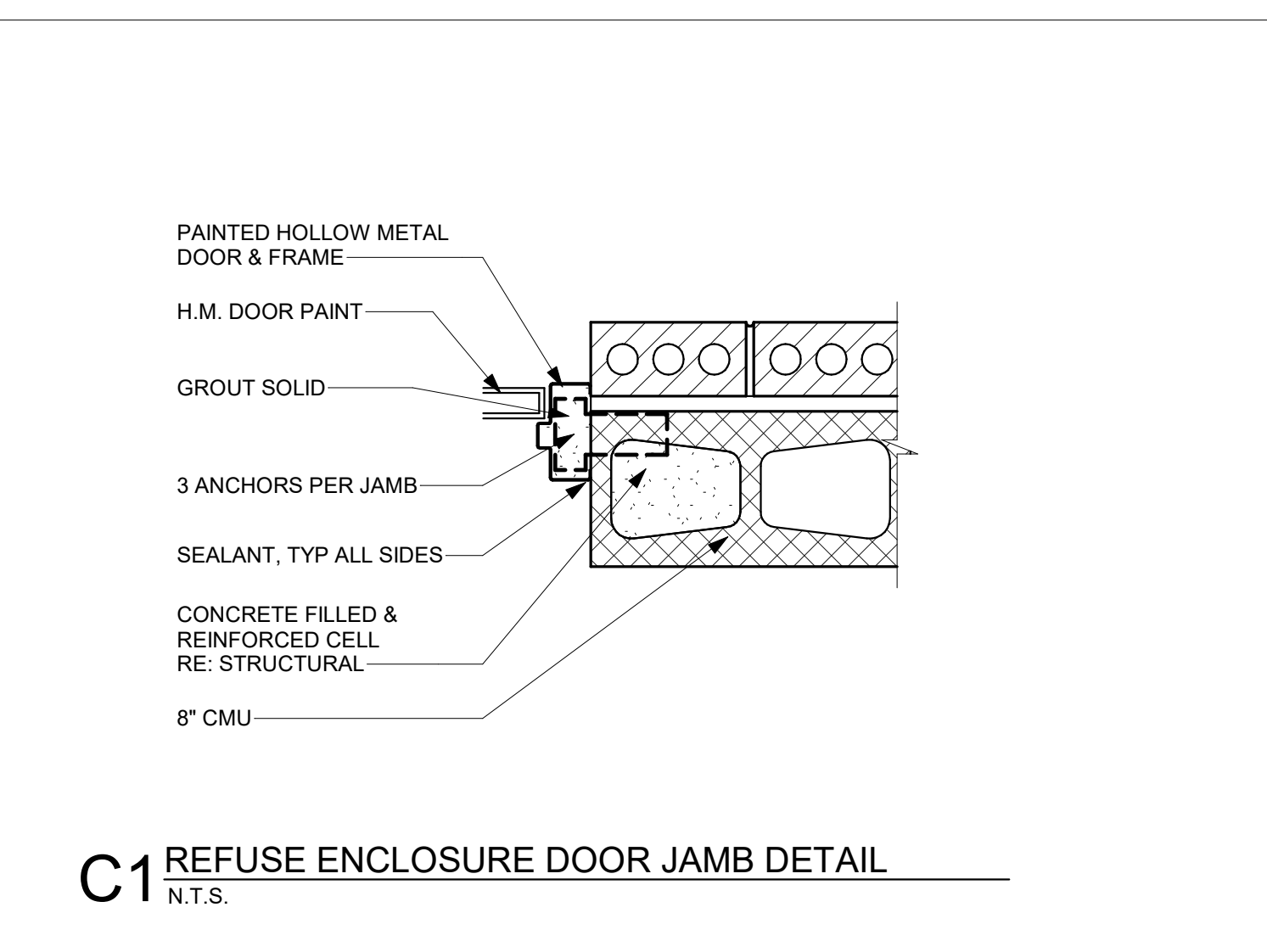
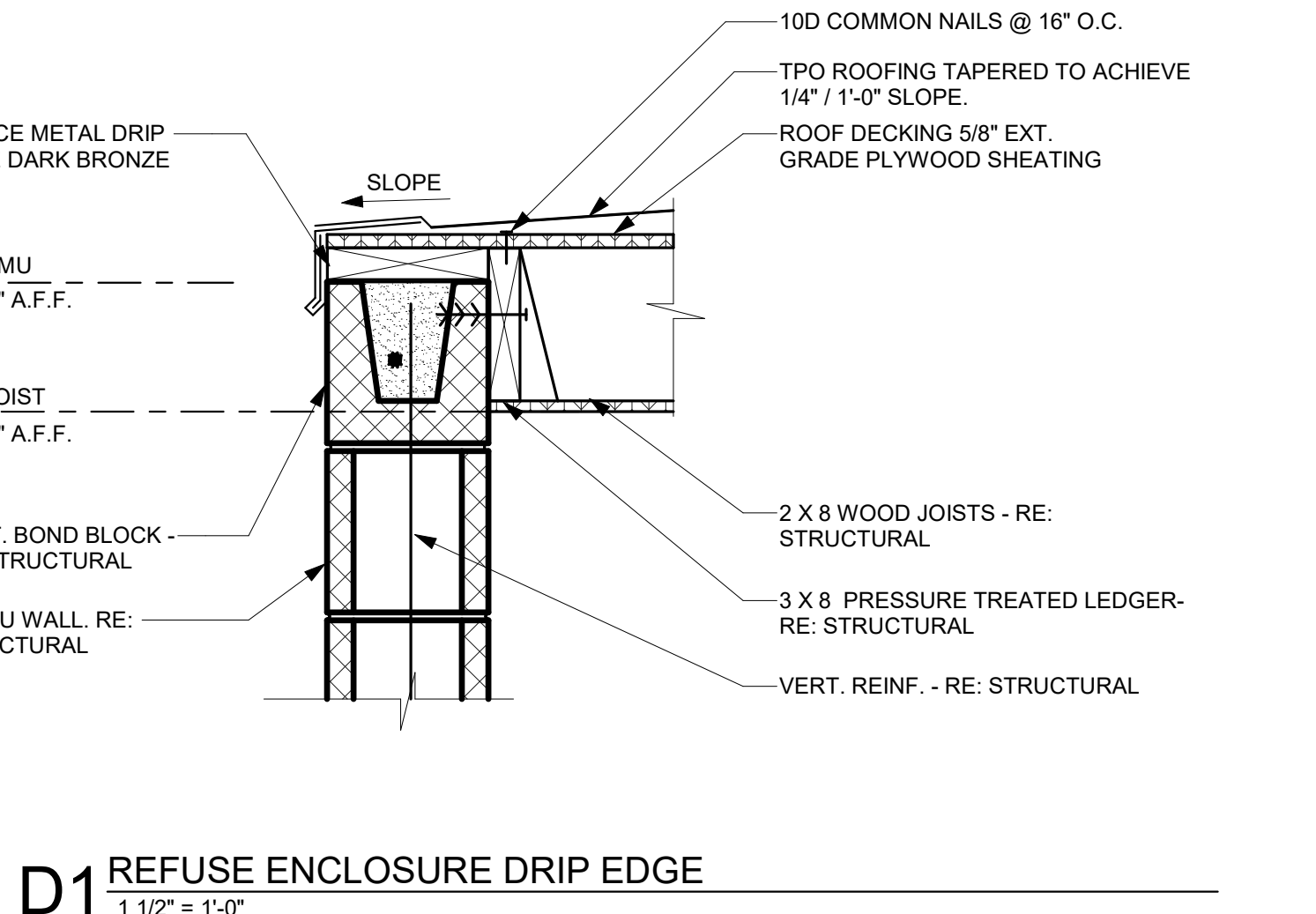
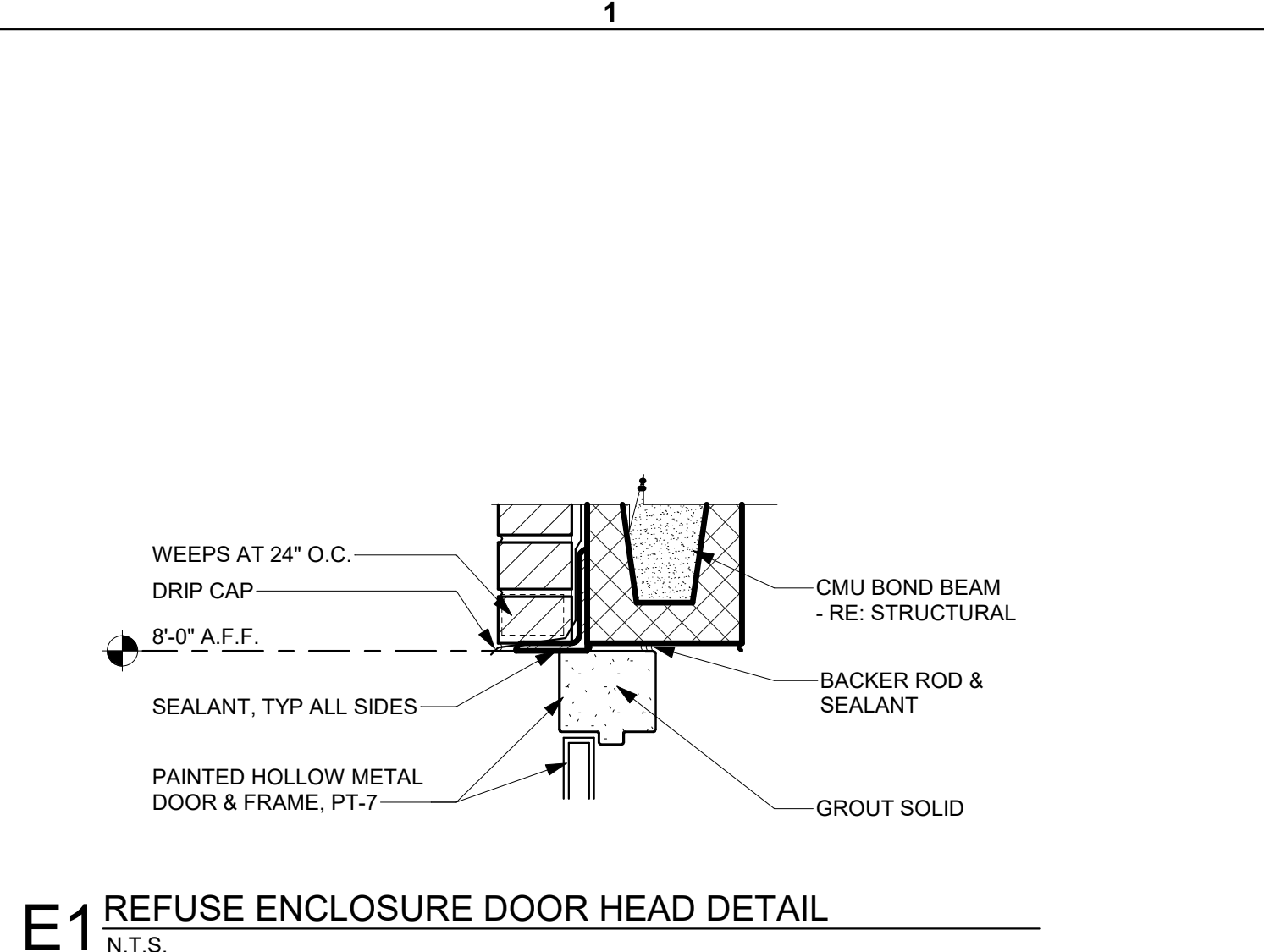
REVISION SCHEDULE		
NO.	DATE	DESCRIPTION
1	11/21/18	PERMIT ISSUE
3	04/12/19	PERMIT REV 3
4	05/06/19	PERMIT REV 4
	07/02/19	ISSUE FOR BID

CONSTRUCTION DOCUMENTS	
CONSULTANT PROJECT #	25779
PRINTED FOR	CONSTRUCTION DOCUMENTS
DATE	06/26/19
DRAWN BY	C.ELIAS

Information contained on this drawing and in all digital files produced for above named project may not be reproduced in any manner without express written or verbal consent from authorized project representatives.

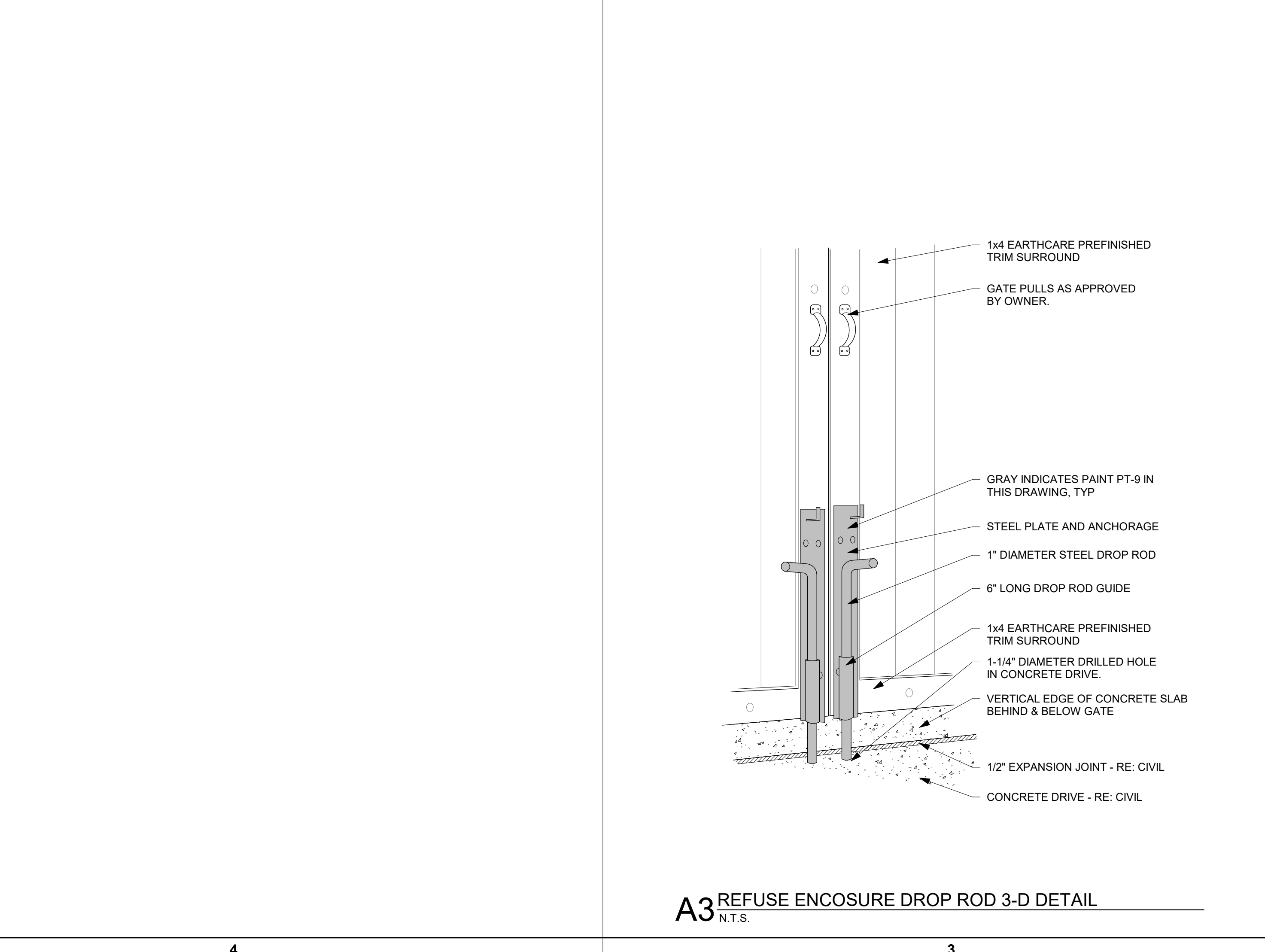
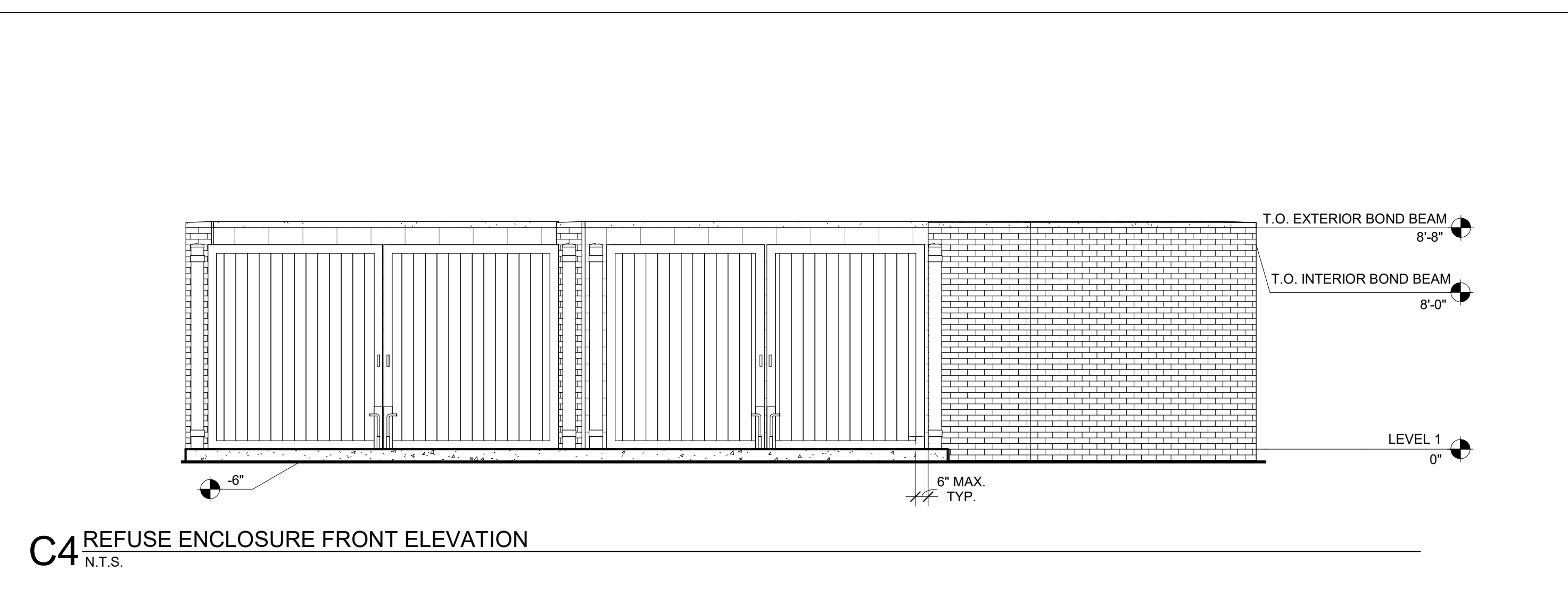
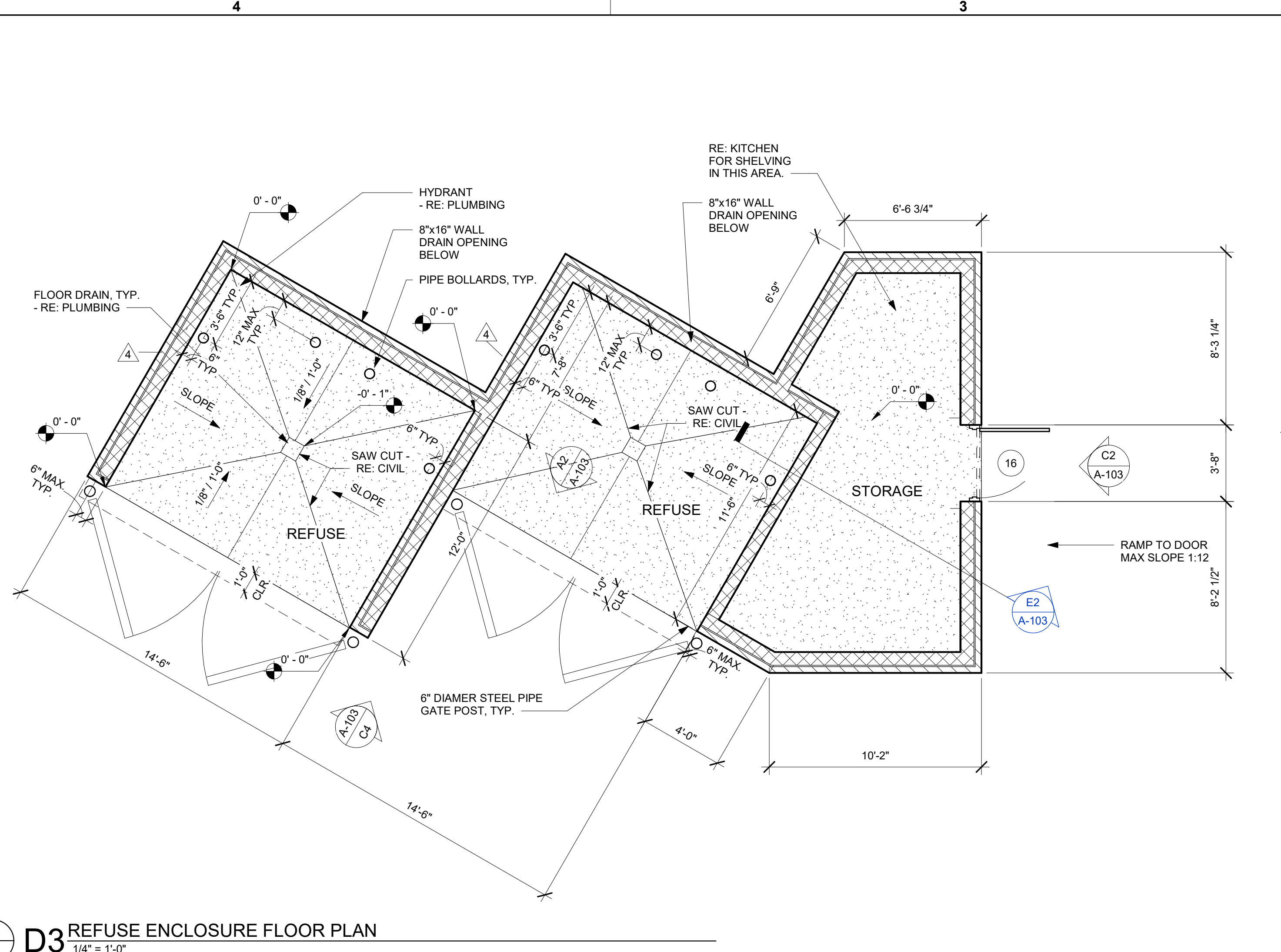
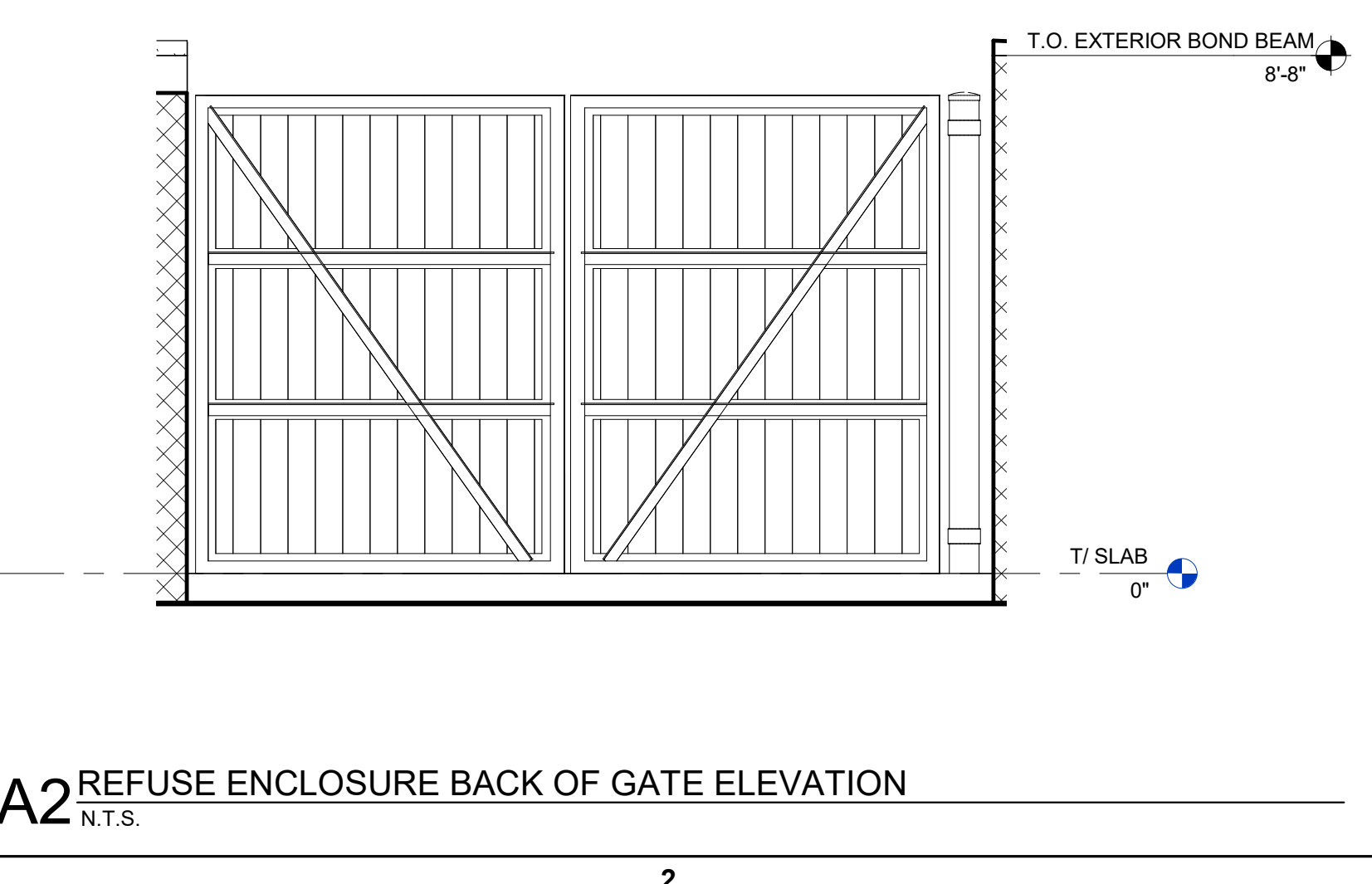
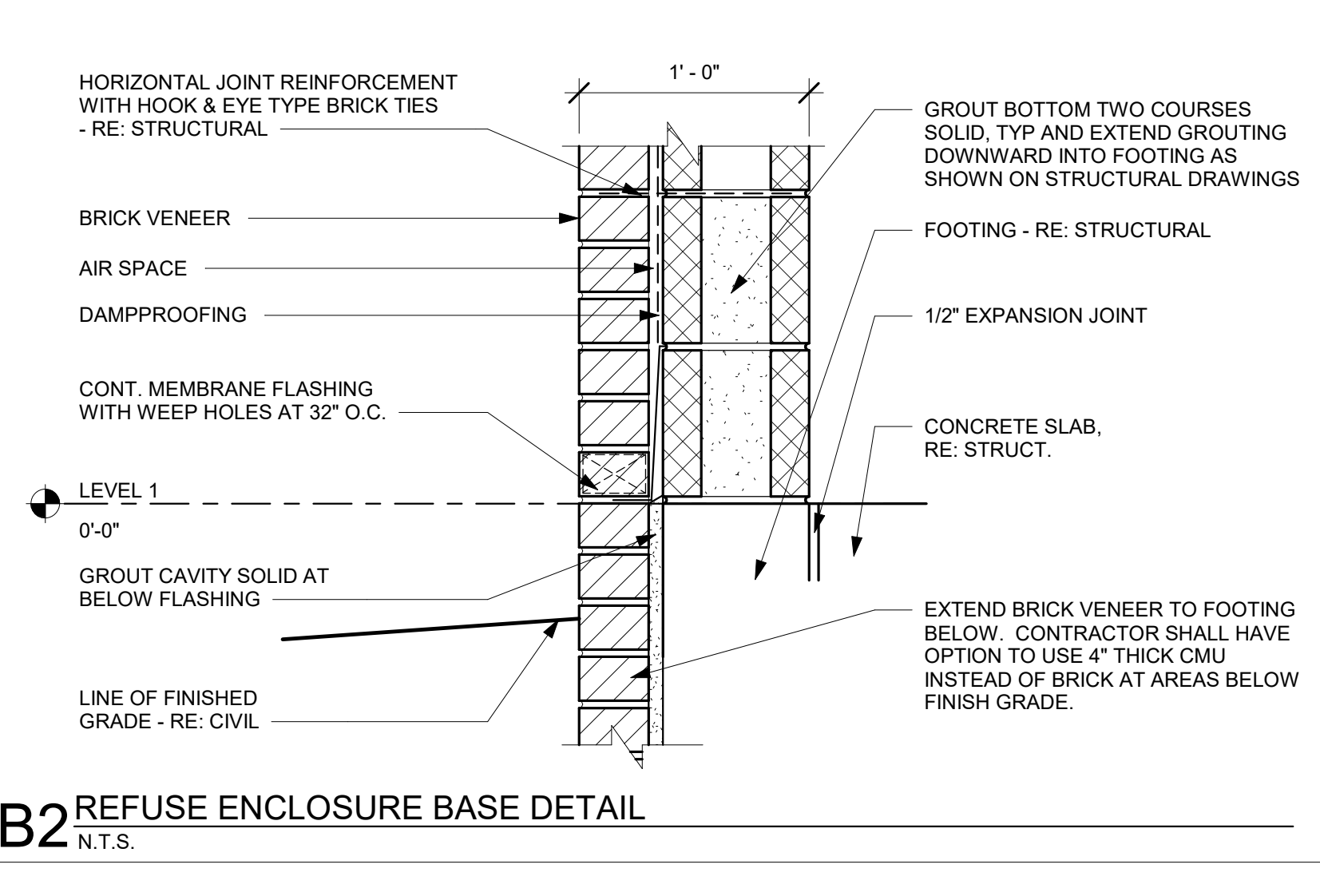
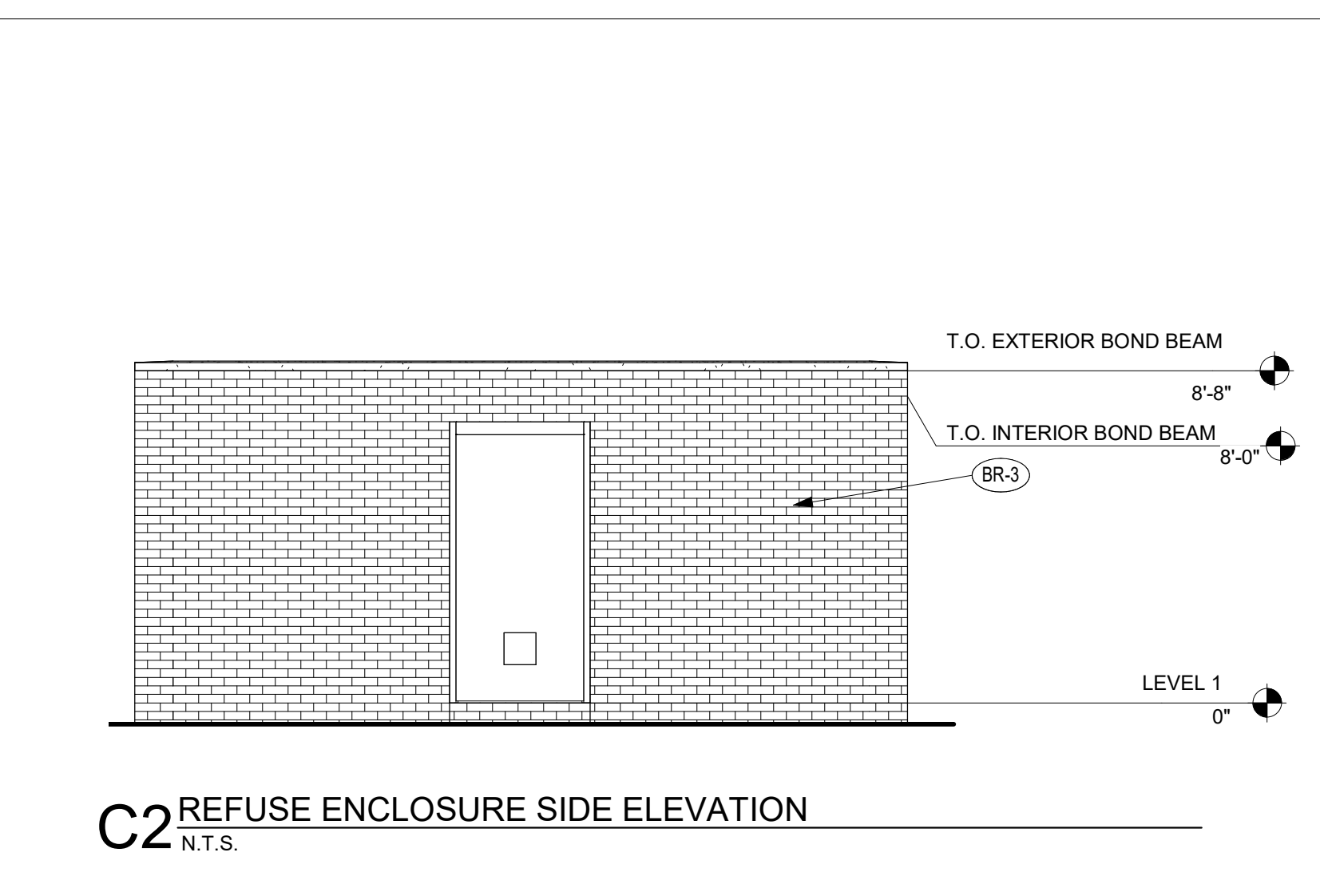
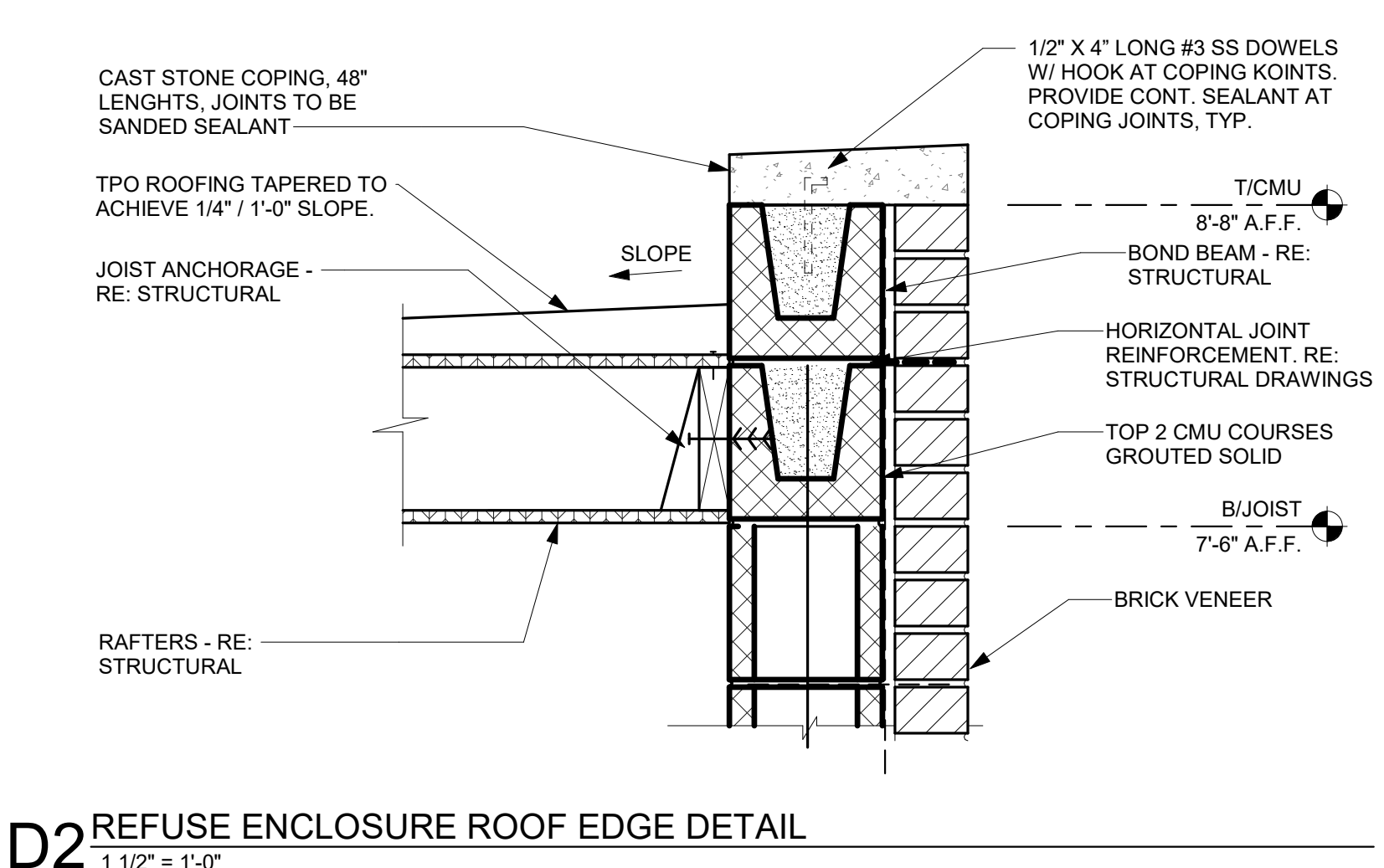
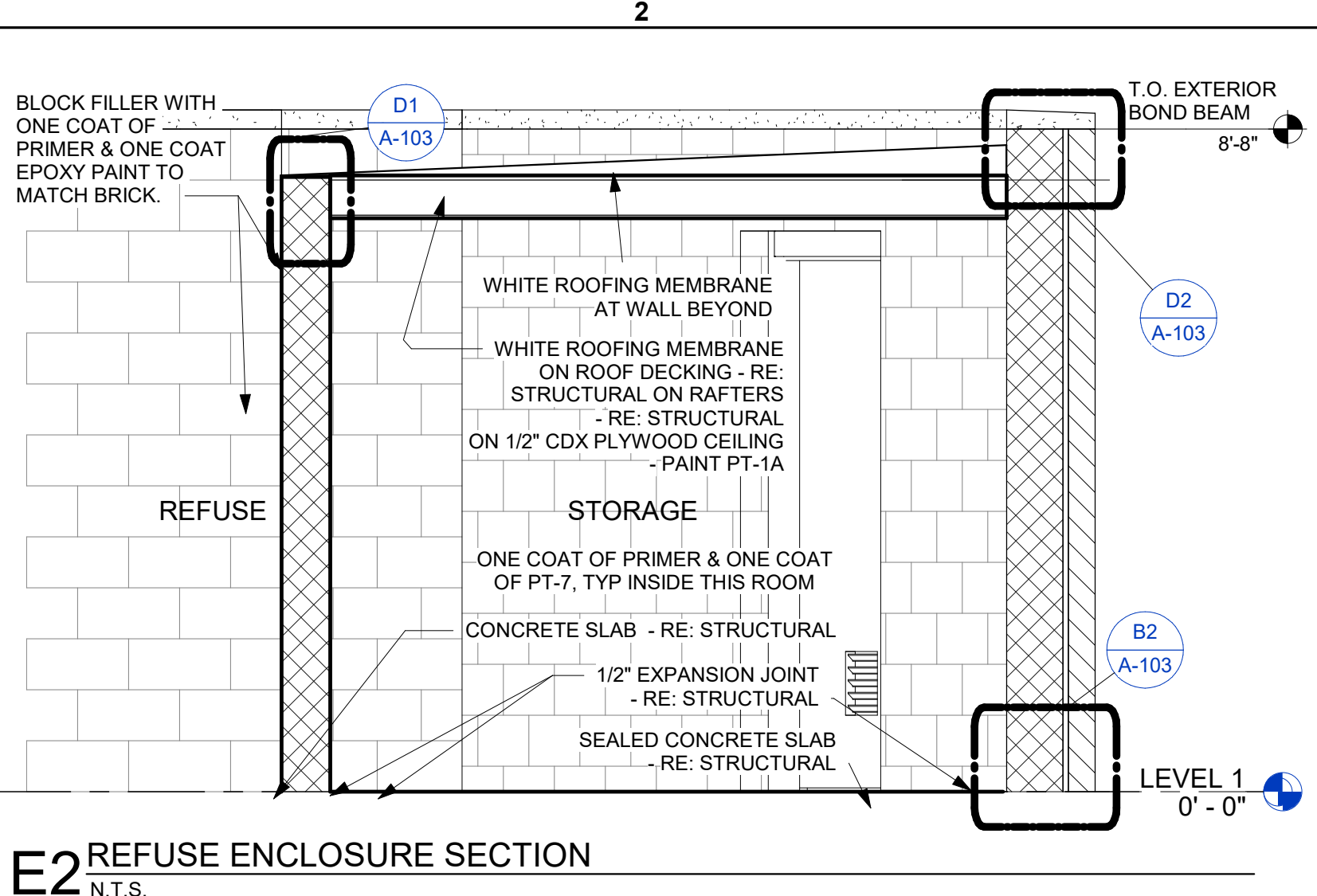
SHEET REFUSE ENCLOSURE

SHEET NUMBER
A-103



REFUSE ENCLOSURE NOTES

- ** IN THE ARCHITECTURAL DRAWINGS, REFUSE ENCLOSURE AND MAIN BUILDING ARE BOTH NOTED WITH FINISH SLAB AT 0'-0\"/>
- SOLID WASTE IS TO PROVIDE ALL INSPECTIONS ON THE TRASH ENCLOSURE SUCH AS PRE-POUR FOR SLAB AND APRON, BOND BEAM, BOLLAR, AND FINAL INSPECTION.



BIM 360/INM 04107 Coors Blvd Albuquerque_FSR_P12_SE_LRG4107_Albuquerque NM_P12_SE_ARC_v2_18.08.rvt
 7/26/2019 9:08:36 AM
 10-SE-04107-A-103-REFUSE ENCLOSURE