



**Chick-fil-A**  
5200 Buffington Road  
Atlanta, Georgia  
30349-2998



1700 INDUSTRIAL DRIVE  
SUITE B  
ROGERS, AR 72756  
479.986.440  
www.core-eng.com

**CHICK-FIL-A**  
ALBUQUERQUE, NM  
4001 COORS BLVD  
ALBUQUERQUE, NM 87120

**FSR#04107**  
BUILDING TYPE / SIZE: P12 SE LRG  
RELEASE: v2.18.08

REVISION SCHEDULE		
NO.	DATE	DESCRIPTION
1	11/12/18	PERMIT ISSUE
2	07/02/19	ISSUE FOR BID

CONSTRUCTION DOCUMENTS

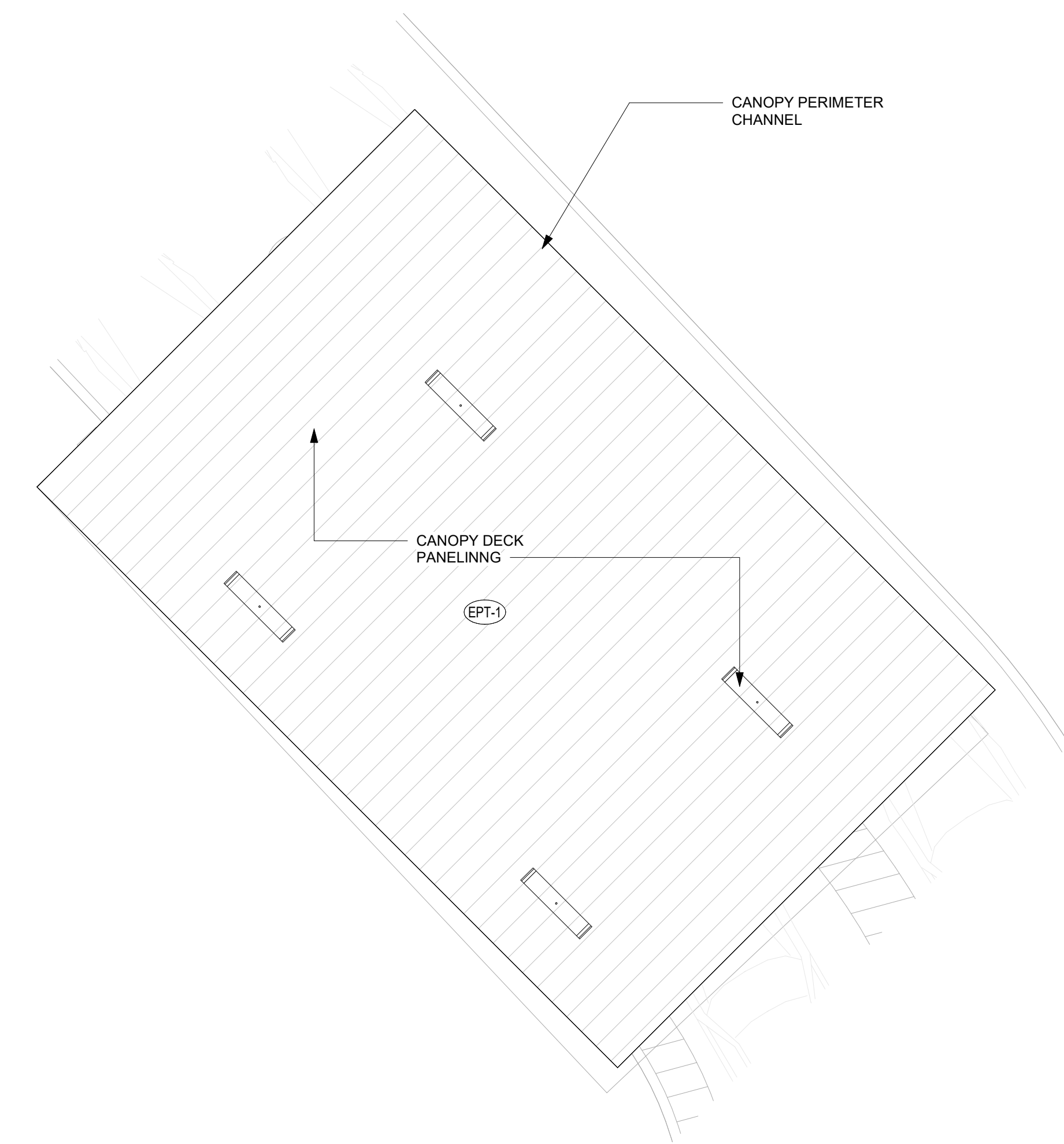
CONSULTANT PROJECT #	25779
PRINTED FOR	CONSTRUCTION DOCUMENTS
DATE	06/26/19
DRAWN BY	C. ELIAS

Information contained on this drawing and in all digital files produced for above named project may not be reproduced in any manner without express written or verbal consent from authorized project representatives.

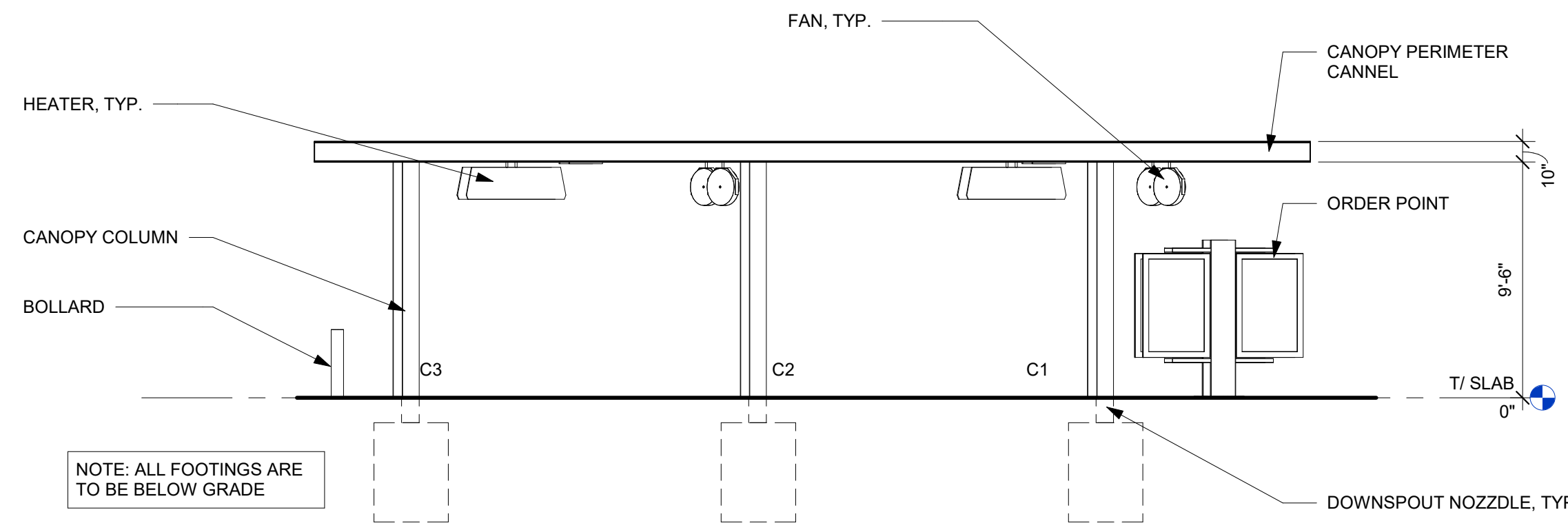
SHEET: CANOPY PLANS AND ELEVATIONS

SHEET NUMBER

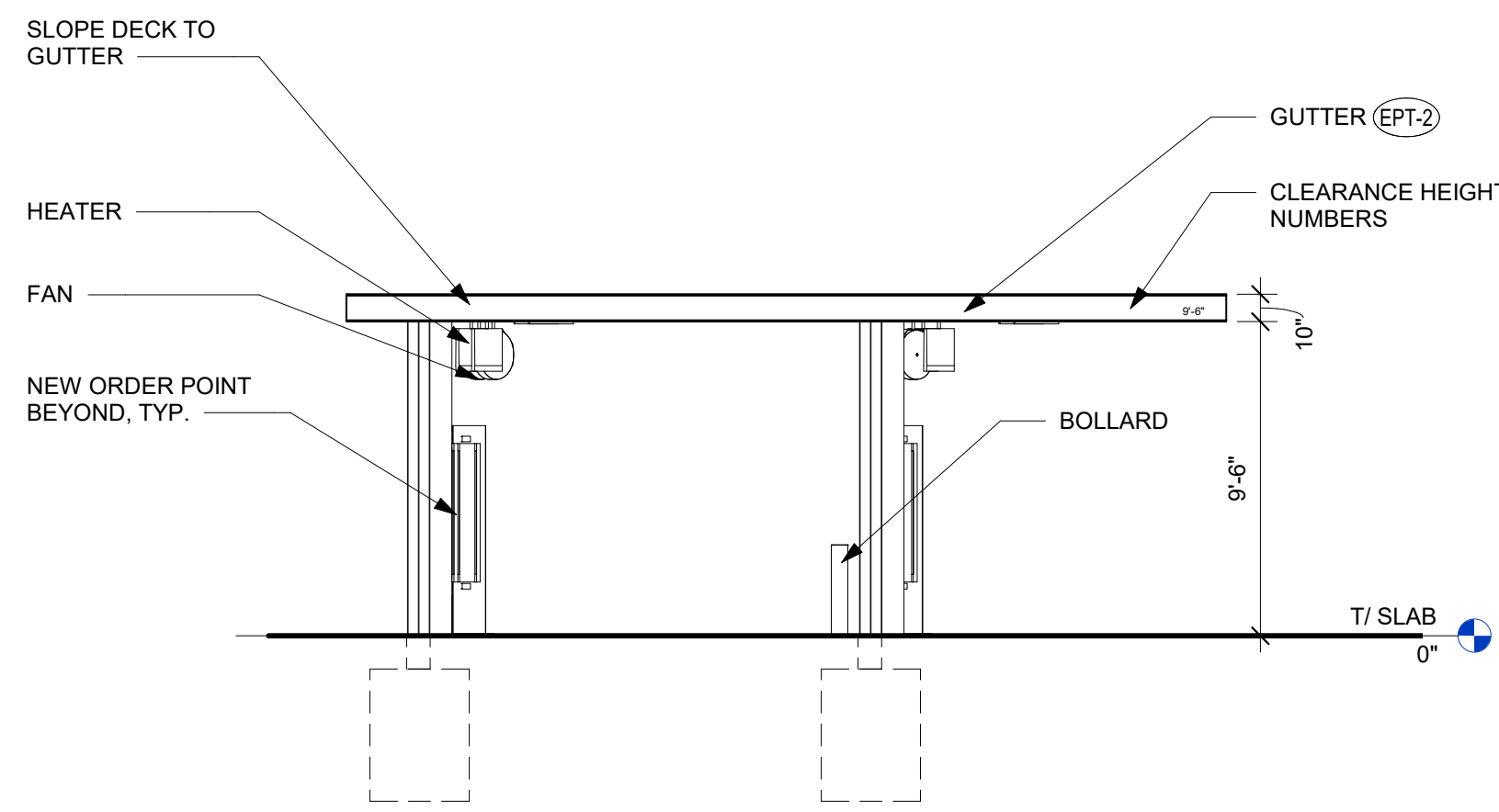
**A-104**



**3 CANOPY ROOF PLAN**  
N.T.S.



**4 CANOPY SIDE ELEVATION**  
3/16" = 1'-0"

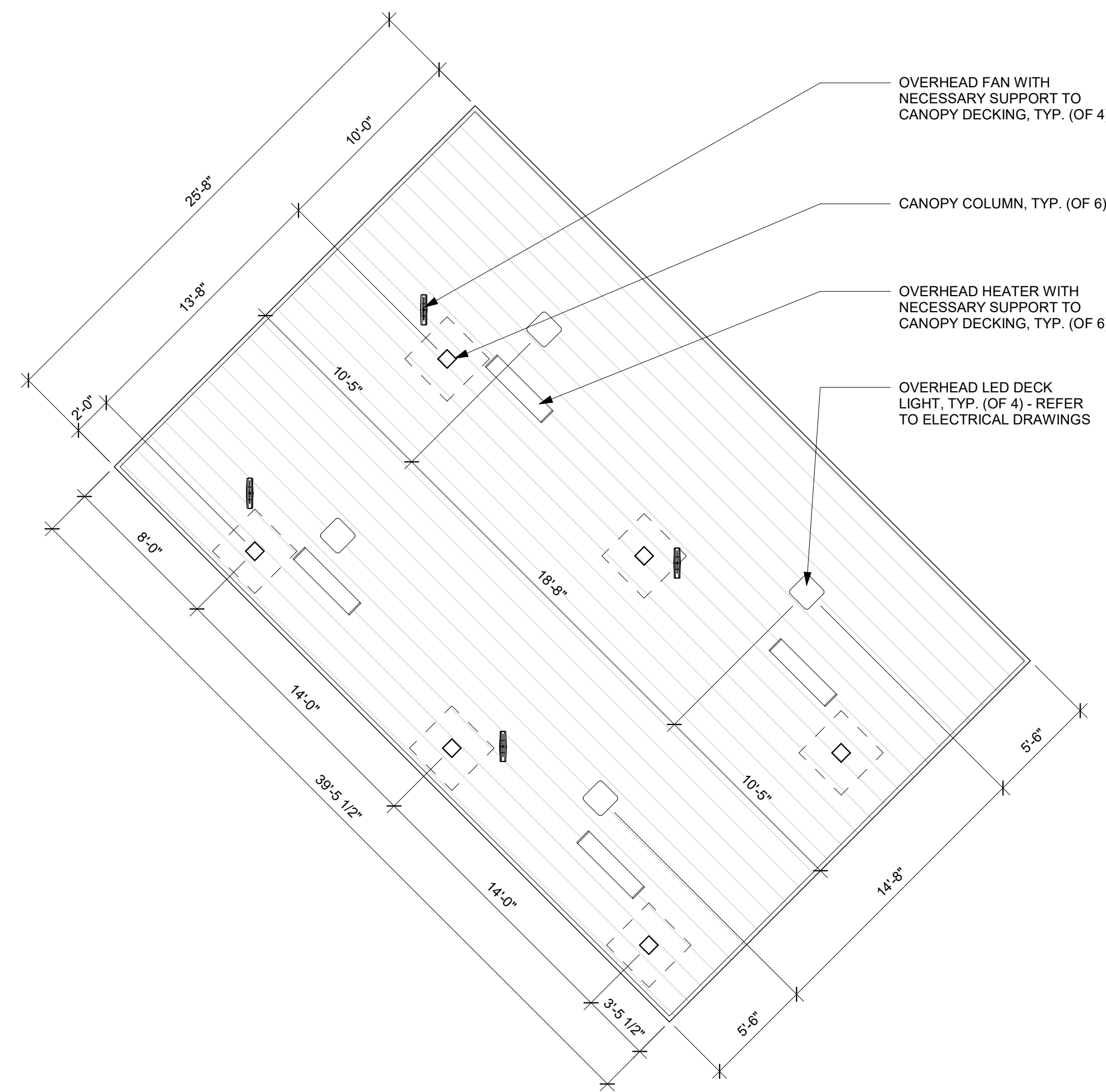


**5 CANOPY FRONT ELEVATION**  
3/16" = 1'-0"

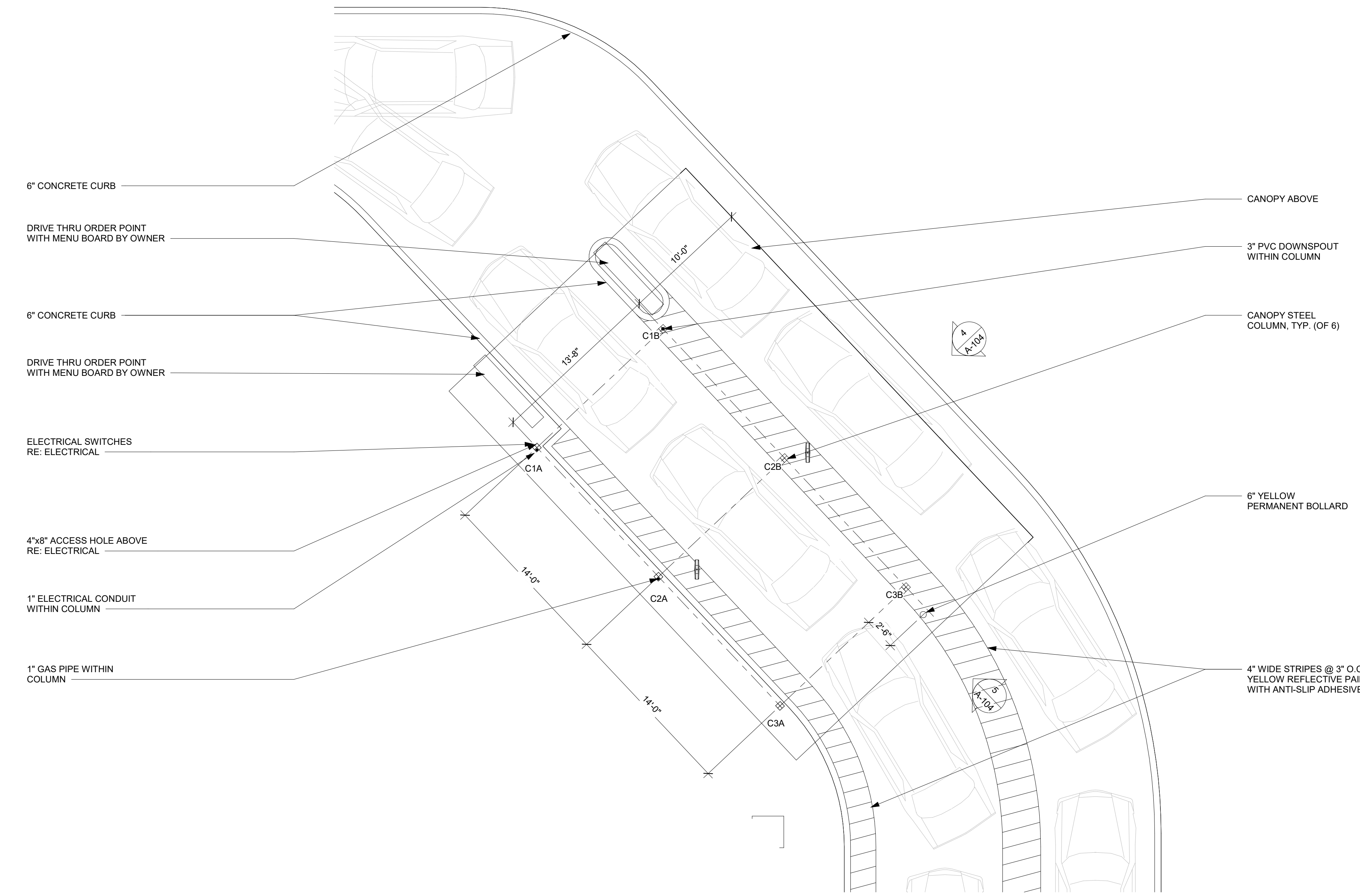
**GENERAL NOTES**

- 1- ANY EXPOSED GAS OR ELECTRICAL CONDUIT SHALL BE PAINTED TO MATCH ADJACENT MATERIAL
- 5- ENSURE CANOPY DRAINAGE AND ANY SITE RE-GRADING DIRECTS WATER AWAY FROM BUILDING DOORS
- 6- ALL FANS AND HEATERS TO BE CENTERED OVER TEAM MEMBER WALKWAY. THE DISTANCE BETWEEN HEATERS AND FANS MUST BE A MINIMUM OF 4'-0". HEATERS TO BE INSTALLED ONE PER 20' OF CANOPY COVERAGE. FIRST FAN IN LINE UP TO FACE DOWNSTREAM. ALL REMAINING FANS TO FACE UPSTREAM AND AWAY FROM OP.

CANOPY FINISH SCHEDULE:	
(EPT-1)	MATTE BLACK OR DARK BRONZE, TEXTURED
(EPT-2)	SMOOTH WHITE, HIGH GLOSS



**2 CANOPY REFLECTED CEILING PLAN**  
N.T.S.



**1 CANOPY FLOOR PLAN**  
3/16" = 1'-0"