

ADMINISTRATIVE AMENDMENT

FILE #: _____ PROJECT #: _____

APPROVED BY

DATE

SITE PLAN - PROPOSED

SITE PLAN OF PROPOSED PARCELS 2A1 AND 2A2
 SUNPORT PARK SUBDIVISION
 (REPLAT OF PARCEL 2A, SUNPORT PARK)
 SECTION 33, T.10N., R.3E., N.M.P.M.
 ALBUQUERQUE, BERNALILLO COUNTY, NEW MEXICO
 JUNE 2022

LEGEND OF SYMBOLS

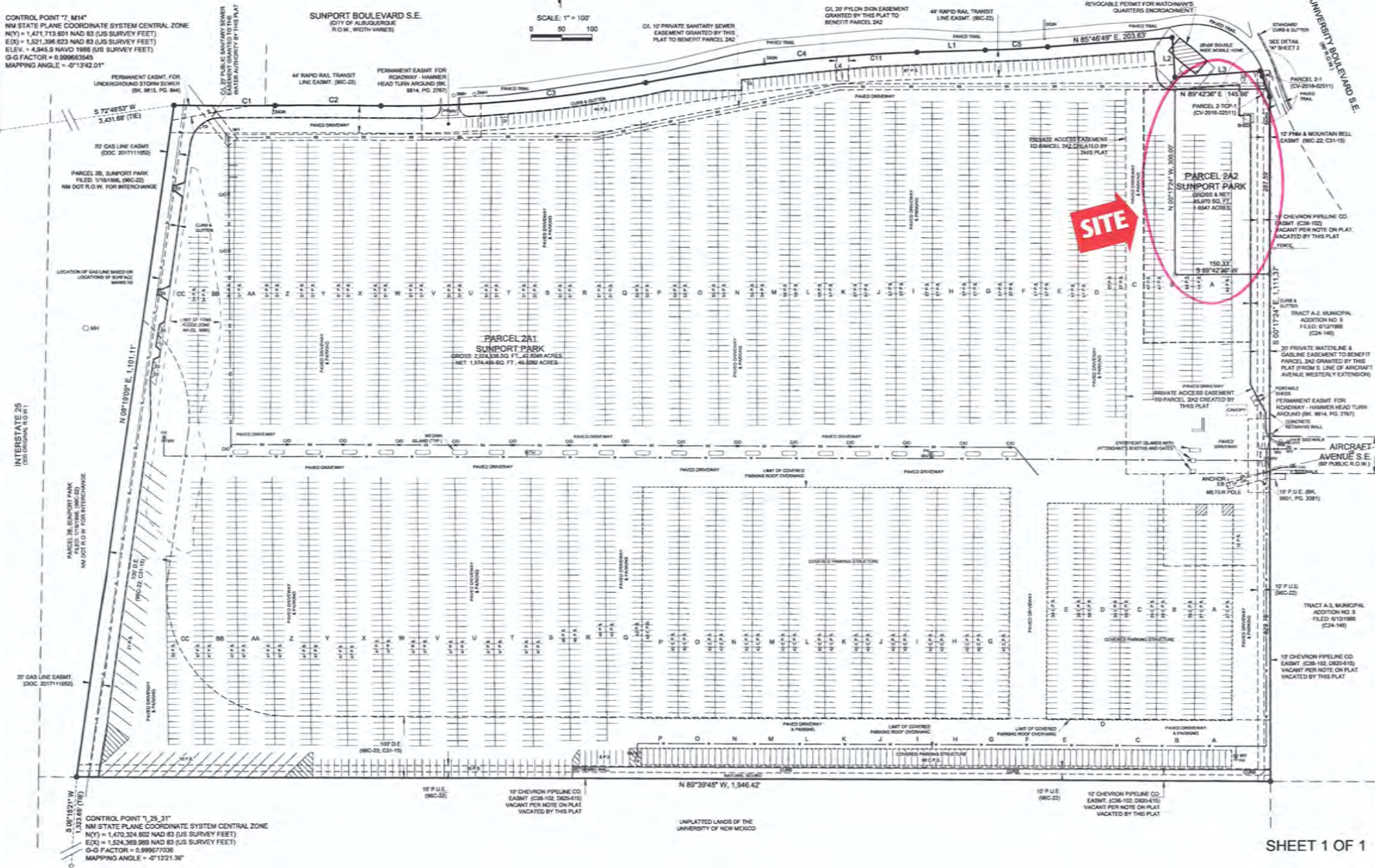
- - - - -	SAFETY BENCH LINE (EXISTING OR PROPOSED)	+	SEWER CLEAN-OUT
- - - - -	EXISTING WATER LINE	○ M4	SAFETY BENCH W/WHOLE
- - - - -	FIRE FRONT	○ D30	DROP PILE
- - - - -	WATER METER	○ D38	ELECTRIC BOX
- - - - -	OVERHEAD UTILITY LINE(S)		
- - - - -	UTILITY POLE		
- - - - -	GAS LINE		
- - - - -	FENCE LINE		



CONTROL POINT "7, MH"
 NM STATE PLANE COORDINATE SYSTEM CENTRAL ZONE
 N(7) = 1,471,713.651 NAD 83 (US SURVEY FEET)
 E(7) = 1,521,386.623 NAD 83 (US SURVEY FEET)
 ELEV. = 4,945.9 NAVD 1989 (US SURVEY FEET)
 G-D FACTOR = 0.99963545
 MAPPING ANGLE = -4°13'42.21"

SUNPORT BOULEVARD S.E.
 (CITY OF ALBUQUERQUE
 R.O.W. WIDTH VARIES)

SUNPORT BOULEVARD S.E.
 (CITY OF ALBUQUERQUE
 R.O.W. WIDTH VARIES)



INTERSTATE 25
 (MEXICAN ALTD. 201)

UNIVERSITY BOULEVARD S.E.
 (CITY OF ALBUQUERQUE
 R.O.W. WIDTH VARIES)

AIRCRAFT AVENUE S.E.
 (BY PUBLIC R.O.W.)

CONTROL POINT "1, 25, 31"
 NM STATE PLANE COORDINATE SYSTEM CENTRAL ZONE
 N(1) = 1,470,324.602 NAD 83 (US SURVEY FEET)
 E(1) = 1,524,369.989 NAD 83 (US SURVEY FEET)
 G-D FACTOR = 0.99977036
 MAPPING ANGLE = -2°13'21.38"

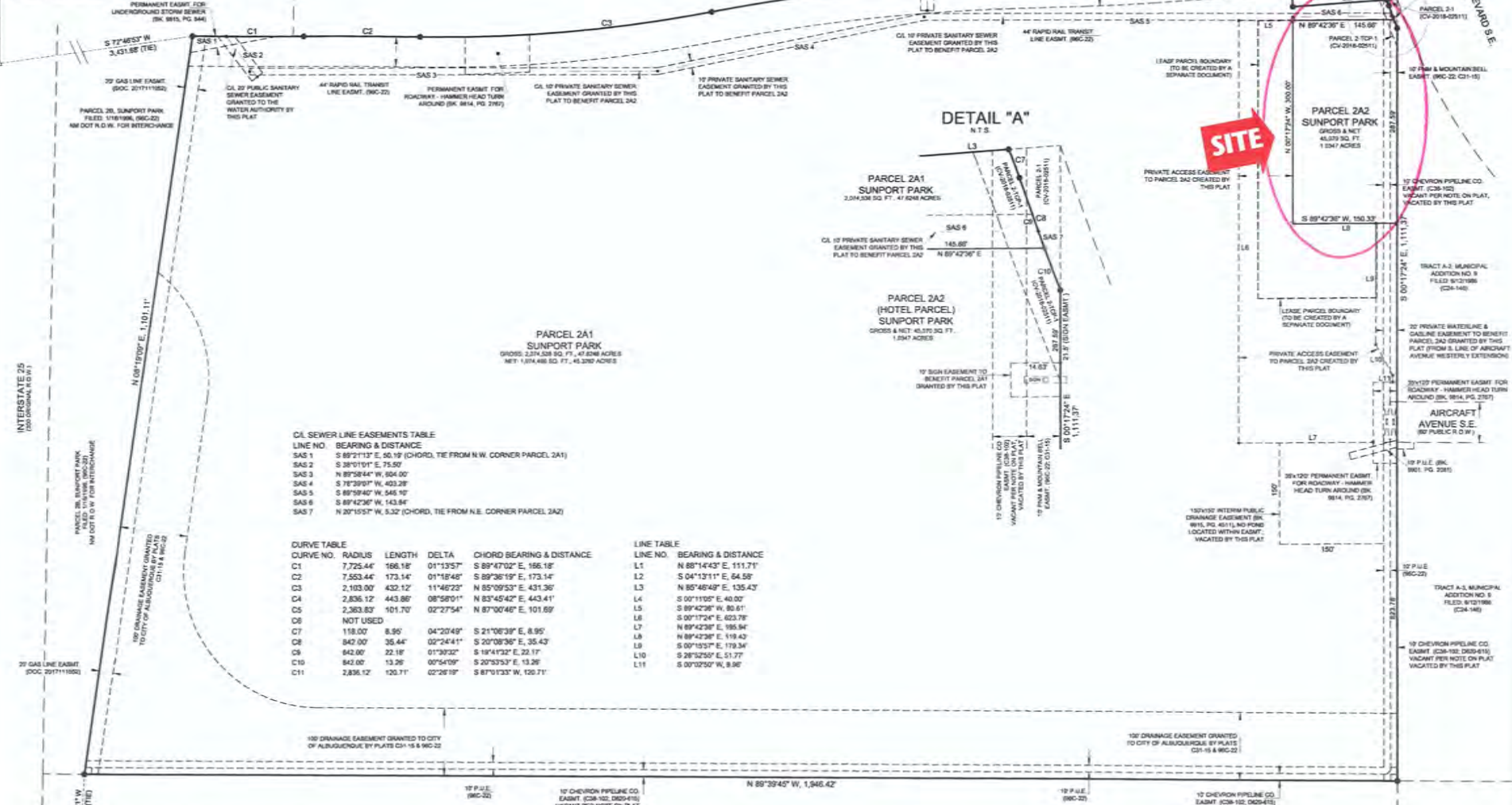
UNPLATTED LANDS OF THE
 UNIVERSITY OF NEW MEXICO

PLAT

PLAT OF PARCELS 2A1 AND 2A2 SUNPORT PARK SUBDIVISION (REPLAT OF PARCEL 2A, SUNPORT PARK) SECTION 33, T.10N., R.3E., N.M.P.M. ALBUQUERQUE, BERNALILLO COUNTY, NEW MEXICO JUNE 2022



CONTROL POINT 17, M14*
NM STATE PLANE COORDINATE SYSTEM CENTRAL ZONE
N(1) = 1,471,713.691 NAD 83 (US SURVEY FEET)
E(1) = 1,301,386.603 NAD 83 (US SURVEY FEET)
ELEV. = 4,845.9 NAVD 1988 (US SURVEY FEET)
G-G FACTOR = 0.999983545
MAPPING ANGLE = -0°13'42.01"



INTERSTATE 25
(INTERCHANGE 25)

CL SEWER LINE EASEMENTS TABLE

LINE NO.	BEARING & DISTANCE
SAS 1	S 89°21'13" E, 50.19' (CHORD, TIE FROM N.W. CORNER PARCEL 2A1)
SAS 2	S 38°01'01" E, 75.50'
SAS 3	N 89°58'44" W, 804.00'
SAS 4	S 78°39'01" W, 403.28'
SAS 5	S 89°39'40" W, 545.10'
SAS 6	S 89°42'36" W, 143.84'
SAS 7	N 20°15'57" W, 5.32' (CHORD, TIE FROM N.E. CORNER PARCEL 2A2)

CURVE TABLE

CURVE NO.	RADIUS	LENGTH	DELTA	CHORD BEARING & DISTANCE
C1	7,725.44'	166.18'	01°13'57"	S 89°47'02" E, 166.18'
C2	7,553.44'	173.14'	01°16'46"	S 89°36'19" E, 173.14'
C3	2,103.00'	432.12'	11°46'23"	N 85°09'53" E, 431.36'
C4	2,836.12'	443.86'	08°58'01"	N 83°45'42" E, 443.41'
C5	2,383.83'	101.70'	02°27'54"	N 87°00'46" E, 101.69'
C6	NOT USED			
C7	118.00'	8.95'	04°20'49"	S 21°08'39" E, 8.95'
C8	842.00'	35.44'	02°24'41"	S 20°08'36" E, 35.42'
C9	842.00'	22.18'	01°39'32"	S 18°41'32" E, 22.17'
C10	842.00'	13.26'	00°54'09"	S 20°33'53" E, 13.26'
C11	2,836.12'	120.71'	02°28'19"	S 87°01'33" W, 120.71'

LINE TABLE

LINE NO.	BEARING & DISTANCE
L1	N 88°14'43" E, 111.71'
L2	S 04°12'11" E, 64.58'
L3	N 86°46'49" E, 135.43'
L4	S 00°11'05" E, 40.00'
L5	S 89°42'36" W, 80.61'
L6	S 00°17'24" E, 603.79'
L7	N 89°42'36" E, 195.84'
L8	N 89°42'36" E, 119.43'
L9	S 00°19'37" E, 179.34'
L10	S 28°32'55" E, 51.77'
L11	S 00°02'50" W, 8.96'

CONTROL POINT 1, 25, 31*
NM STATE PLANE COORDINATE SYSTEM CENTRAL ZONE
N(1) = 1,470,324.602 NAD 83 (US SURVEY FEET)
E(1) = 1,524,389.889 NAD 83 (US SURVEY FEET)
ELEV. = 4,845.9 NAVD 1988 (US SURVEY FEET)
G-G FACTOR = 0.999977526
MAPPING ANGLE = -0°13'21.36"

UNPLATTED LANDS OF THE
UNIVERSITY OF NEW MEXICO

DETAIL "A" N.T.S.

