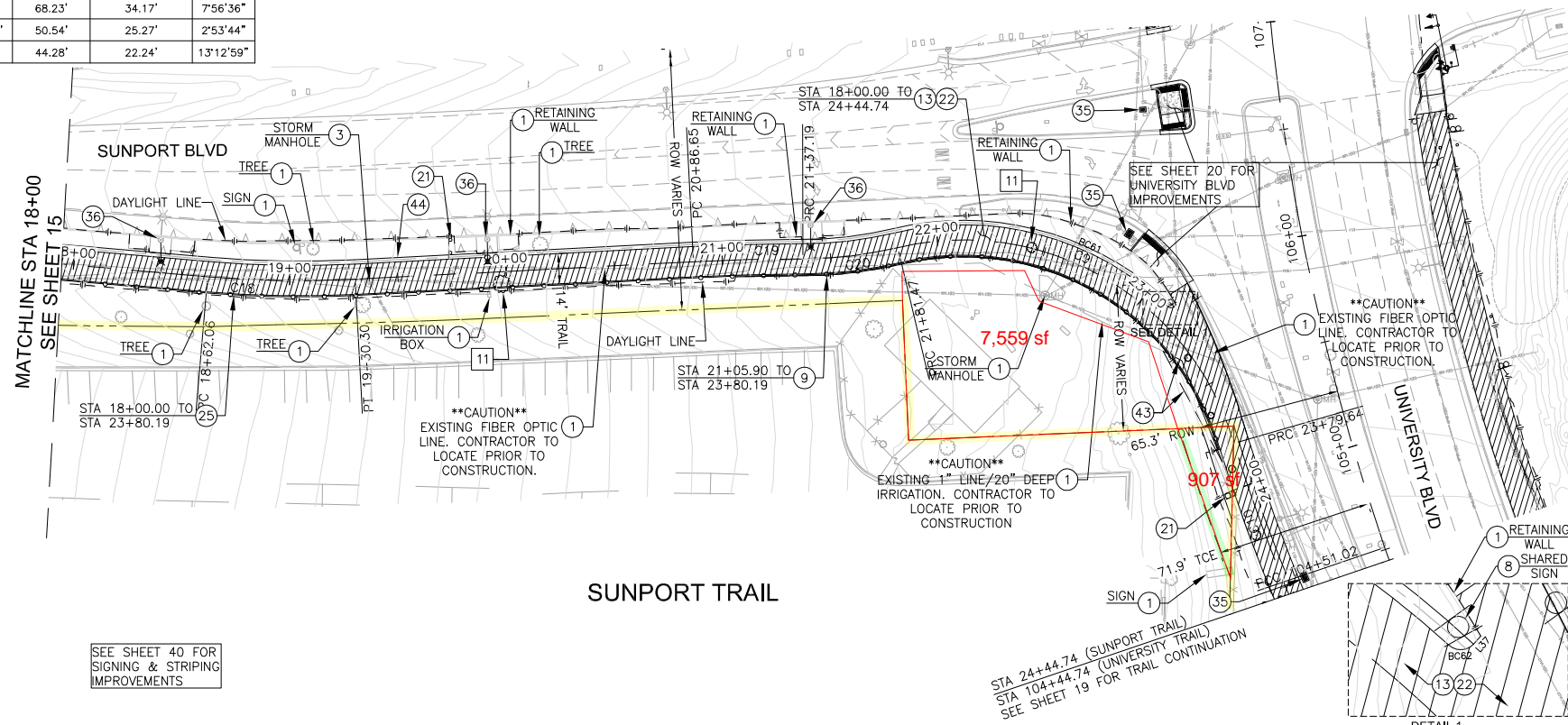


9/9/2016 12:37:00 PM Brandice Long TY Lin Half Scale.ctb P:\CoA-University Bikeways\CAD\DLV\Phase 2\7956.92_PP4_02.dwg

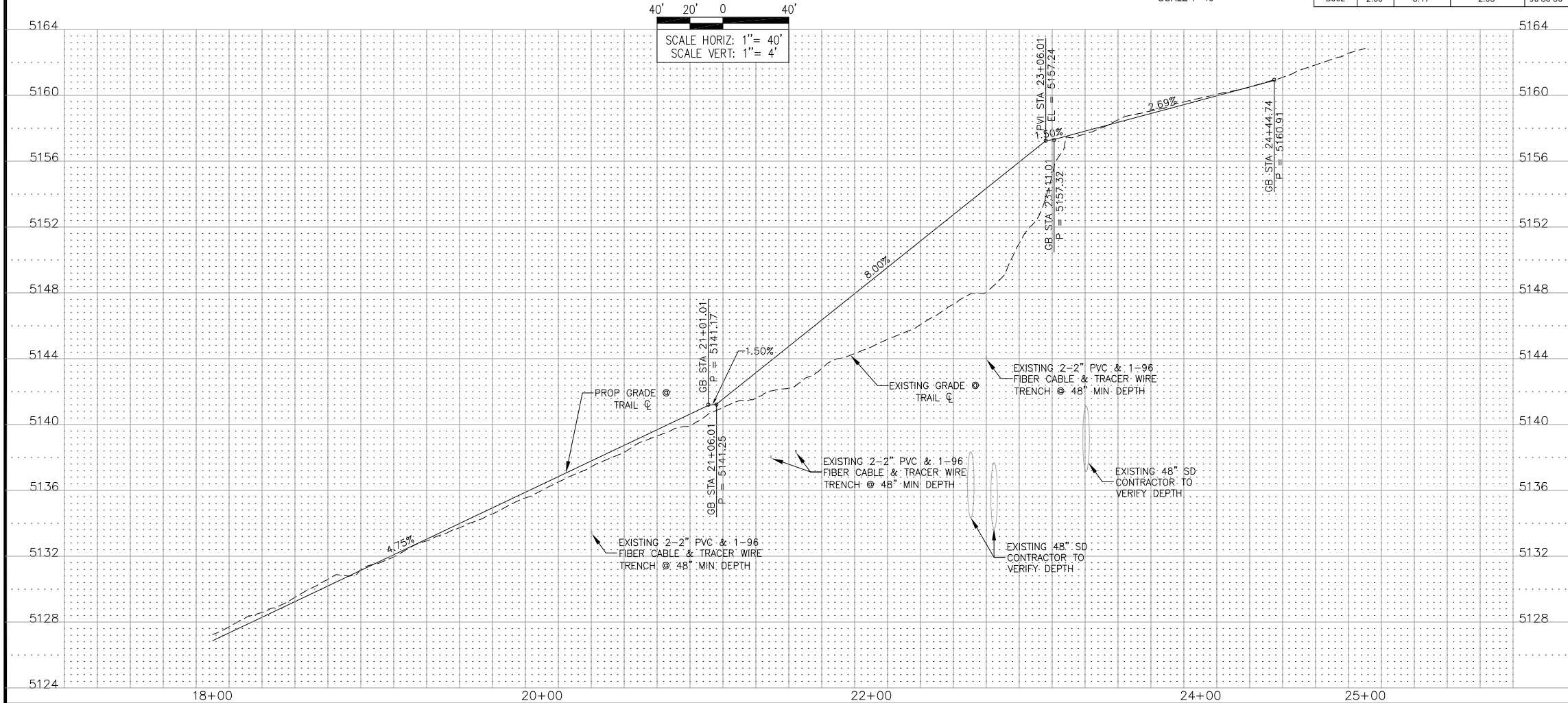
CURVE TABLE (C)				
CURVE #	RADIUS	ARC LENGTH	TANGENT LENGTH	DELTA
C9	130'	198.18'	124.08'	87°18'27"
C10	829'	305.12'	154.30'	21°05'17"
C18	492'	68.23'	34.17'	7°56'36"
C19	1000'	50.54'	25.27'	2°53'44"
C20	192'	44.28'	22.24'	13°12'59"



BACK OF CURB, SIDEWALK, OR TRAIL LINE TABLE		
LINE #	LENGTH	BEARING
L37	1.25	S42° 45' 04.74"W

BACK OF CURB, SIDEWALK, OR TRAIL CURVE TABLE (BC)				
CURVE #	RADIUS	ARC LENGTH	TANGENT LENGTH	DELTA
BC61	137.00'	136.42'	74.47'	57°03'15"
BC62	2.00'	3.17'	2.03'	90°50'56"

EXISTING ELEVATION @ C	
STATION	ELEVATION
18+00	5127.25
18+25	5128.44
18+50	5129.51
18+75	5130.89
19+00	5131.56
19+25	5132.78
19+50	5133.74
19+75	5134.83
20+00	5136.01
20+25	5137.19
20+50	5138.32
20+75	5139.49
21+00	5140.56
21+25	5141.46
21+50	5142.21
21+75	5143.81
22+00	5144.72
22+25	5145.79
22+50	5147.31
22+75	5148.49
23+00	5152.40
23+25	5157.52
23+50	5158.52
23+75	5159.16
24+00	5159.83
24+25	5160.39



REMOVAL/RELOCATE

11 REMOVE & DISPOSE EXISTING TREE 2 EA

CONSTRUCTION NOTES

1 PROTECT IN PLACE 1 EA

3 ADJUST TO GRADE

8 INSTALL NEW SIGN POST PER DETAIL ON SHEET 34 & 35 AND NEW SIGN PER SHEET 40 1,057 SY

9 CONSTRUCT NEW RETAINING WALL, PER NMDOT STANDARD DETAIL 511-80-X/3 ON SHEETS 51-54. SEE SHEET 45 FOR PROFILE GRADES. 1,057 SY

13 CONSTRUCT ASPHALT TRAIL, SEE PLAN VIEW FOR WIDTH, SEE TYP FOR PVMT SECTION SHEET 6 572 LF

21 RELOCATED SIGN PER SHEET 40 WITH SIGN POST PER DETAIL ON SHEET 34 & 35

22 SUBGRADE PREPARATION

25 INSTALL NEW PEDESTRIAN SCREENING FENCE TYPE 2 TO TOP OF RETAINING WALL, PER NMDOT STD DETAILS ON SHEET 48-50. INSTALL FOOTINGS PER DETAIL 1 ON SHEET 50 WHERE FENCE IS NOT ON RETAINING WALL. 518 LF

35 CONSTRUCT NEW PULL BOX, SEE TRAFFIC SIGNAL SHEETS 98-121

36 CONSTRUCT NEW LIGHT POLE, SEE LIGHTING SHEETS 84-97

43 REMOVE EXISTING IRRIGATION LINE AND INSTALL NEW 1" IRRIGATION LINE PER DETAIL ON SHEET 64

44 CONSTRUCT COA ALLEY GUTTER PER STD DWG 2415A, INCLUDING SUBGRADE

AS BUILT INFORMATION

CONTRACTOR: _____ DATE: _____

INSPECTOR'S: _____ DATE: _____

FIELD CHANGE BY: _____ DATE: _____

VERIFICATION BY: _____ DATE: _____

APPROVED BY: _____ DATE: _____

CORRECTED BY: _____ DATE: _____

RECORDED BY: _____ DATE: _____

95% REVIEW

NON-PARTICIPATING

260-1990

TY LIN INTERNATIONAL
engineers | planners | scientists
500 4th Street NW Suite 403
Bank of America Centre
Albuquerque, NM 87102

CITY OF ALBUQUERQUE
MUNICIPAL DEVELOPMENT DEPARTMENT
ENGINEERING DIVISION

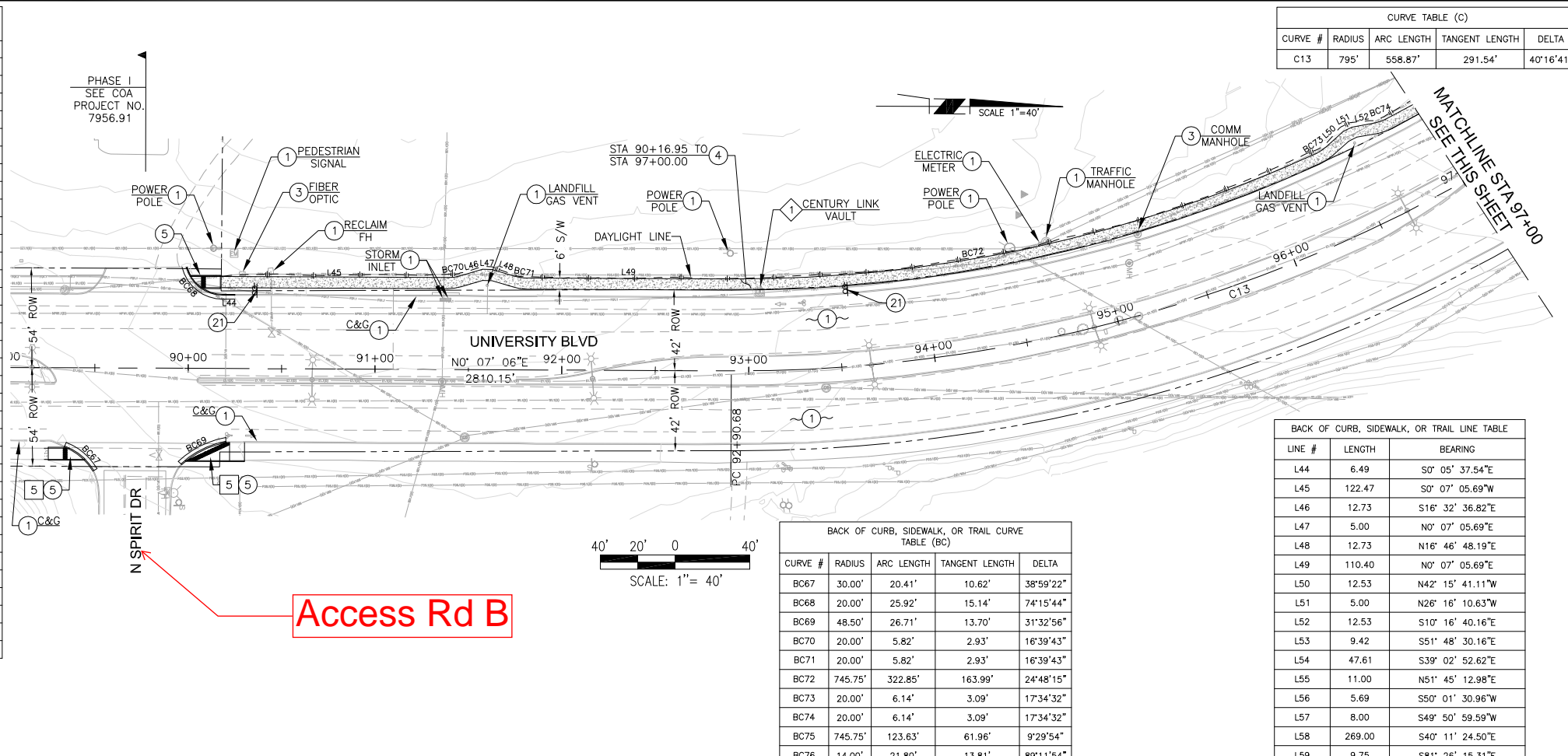
TITLE: UNIVERSITY BLVD BIKEWAYS - PHASE 2
PLAN & PROFILE
SUNPORT TRAIL STA 18+00 TO 25+00

Design Review Committee	City Engineer Approval	Mo./Day/Yr.	Mo./Day/Yr.

City Project No. 7956.92 (A300111) Zone Map No. L15, M15 Sheet 16 Of 140

EXISTING ELEVATION @ SIDEWALK TOP OF CURB	
STATION	LEFT TC
90+25	5189.48
90+50	5189.16
90+75	5188.86
91+00	5188.80
91+25	5188.69
91+50	5188.81
91+75	5188.91
92+00	5189.10
92+25	5189.24
92+50	5189.52
92+75	5189.74
93+00	5189.96
93+25	5190.26
93+50	5190.55
93+75	5190.69
94+00	5190.81
94+25	5190.91
94+50	5190.88
94+75	5190.88
95+00	5190.86
95+25	5190.67
95+50	5190.53
95+75	5190.18
96+00	5190.82
96+25	5189.47
96+50	5189.12
96+75	5188.50
97+00	5187.86
97+25	5187.15
97+50	5186.54
97+75	5185.82
98+00	5185.06
98+25	5184.18
98+50	5183.38

CURVE TABLE (C)				
CURVE #	RADIUS	ARC LENGTH	TANGENT LENGTH	DELTA
C13	795'	558.87'	291.54'	40°16'41"



BACK OF CURB, SIDEWALK, OR TRAIL CURVE TABLE (BC)				
CURVE #	RADIUS	ARC LENGTH	TANGENT LENGTH	DELTA
BC67	30.00'	20.41'	10.62'	38°59'22"
BC68	20.00'	25.92'	15.14'	74°15'44"
BC69	48.50'	26.71'	13.70'	31°32'56"
BC70	20.00'	5.82'	2.93'	16°39'43"
BC71	20.00'	5.82'	2.93'	16°39'43"
BC72	745.75'	322.85'	163.99'	24°48'15"
BC73	20.00'	6.14'	3.09'	17°34'32"
BC74	20.00'	6.14'	3.09'	17°34'32"
BC75	745.75'	123.63'	61.96'	9°29'54"
BC76	14.00'	21.80'	13.81'	89°11'54"
BC77	56.00'	22.79'	11.55'	23°18'46"
BC78	15.00'	19.60'	11.48'	74°52'04"
BC79	21.00'	17.27'	9.16'	47°07'41"
BC80	837.00'	310.46'	157.04'	21°15'09"
BC81	45.75'	21.90'	11.16'	27°25'38"
BC82	63.00'	29.72'	15.14'	27°01'37"
BC83	81.00'	68.37'	36.37'	48°21'41"
BC84	975.00'	541.97'	278.18'	31°50'55"
BC85	35.49'	11.43'	5.76'	18°26'49"
BC86	33.00'	7.56'	3.79'	13°07'06"
BC87	45.00'	12.60'	6.34'	16°02'37"
BC88	26.00'	11.74'	5.97'	25°51'47"

BACK OF CURB, SIDEWALK, OR TRAIL LINE TABLE		
LINE #	LENGTH	BEARING
L44	6.49	S0° 05' 37.54"E
L45	122.47	S0° 07' 05.69"W
L46	12.73	S16° 32' 36.82"E
L47	5.00	N0° 07' 05.69"E
L48	12.73	N16° 46' 48.19"E
L49	110.40	N0° 07' 05.69"E
L50	12.53	N42° 15' 41.11"W
L51	5.00	N26° 16' 10.63"W
L52	12.53	S10° 16' 40.16"E
L53	9.42	S51° 48' 30.16"E
L54	47.61	S39° 02' 52.62"E
L55	11.00	N51° 45' 12.98"E
L56	5.69	S50° 01' 30.96"W
L57	8.00	S49° 50' 59.59"W
L58	269.00	S40° 11' 24.50"E
L59	9.75	S81° 26' 15.31"E
L60	19.16	N8° 47' 32.12"W
L61	72.09	N40° 09' 35.51"W

NEW MONDALE PINE TREE LOCATIONS	
STATION	OFFSET
103+03.72	56.64' LT
103+32.19	56.84' LT
103+60.56	57.39' LT
103+89.02	58.26' LT
104+16.21	59.35' LT
104+44.37	60.94' LT

CURVE TABLE (C)				
CURVE #	RADIUS	ARC LENGTH	TANGENT LENGTH	DELTA
C1	595'	203.96'	102.99'	19°38'24"
C2	1090'	381.06'	192.49'	20°01'49"

REMOVAL/RELOCATE

5 REMOVE & DISPOSED EXISTING CURB RAMP 2 EA

CONSTRUCTION NOTES

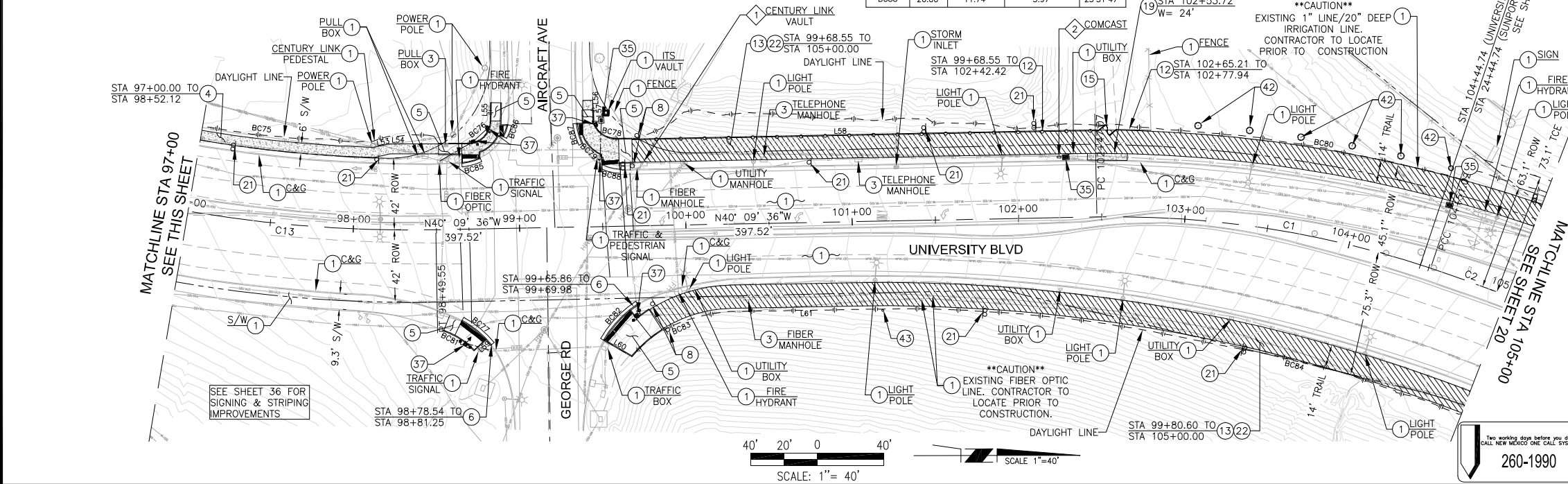
- PROTECT IN PLACE
- ADJUST TO GRADE
- CONSTRUCT 4" SIDEWALK PER COA STD DWG 2430 INCLUDING SUBGRADE 6 EA
- CONSTRUCT CURB RAMP PER DETAILS ON SHEET 24 589 SY
- CONSTRUCT COA STANDARD CURB & GUTTER PER STD DWG 2415A 176 LF
- INSTALL NEW SIGN POST PER DETAIL ON SHEET 34 & 35 AND NEW SIGN PER SHEET 36
- CONSTRUCT HANDRAIL PER DETAILS ON SHEET 46 301 LF
- CONSTRUCT ASPHALT TRAIL, SEE PLAN VIEW FOR WIDTH, SEE TYP FOR PVMT SECTION SHEET 6. 887 SY
- RELOCATED GATE
- CONSTRUCT 6" CONCRETE PAD, WIDTH PER PLAN, BETWEEN PROPOSED CURB AND SIDEWALK 11 SY
- RELOCATED SIGN PER SHEET 36 WITH SIGN POST PER DETAIL ON SHEET 34 & 35 887 SY
- SUBGRADE PREPARATION
- CONSTRUCT NEW PULL BOX, SEE TRAFFIC SIGNAL SHEETS 72-83
- CONSTRUCT NEW PEDESTRIAN OR TRAFFIC SIGNAL, SEE TRAFFIC SIGNAL SHEETS 72-83
- INSTALL NEW MONDALE PINE TREE
- RELOCATED LANDFILL GAS VENT, SEE SHEET 65 FOR DETAILS

WORK TO BE DONE BY OTHERS

- ADJUST TO GRADE
- ROTATED UTILITY BOX (COMCAST), SEE DETAIL ON SHEET 64

EXISTING ELEVATION @ TC TABLE		
STATION	LEFT TC	RIGHT TC
99+75	5178.08	-
100+00	5177.08	5177.37
100+25	5176.04	5176.20
100+50	5175.10	5175.30
100+75	5174.14	5174.41
101+00	5173.07	5173.43
101+25	5172.16	5172.30
101+50	5171.27	5171.14
101+75	5170.45	5170.17
102+00	5169.63	5168.96
102+25	5168.69	5167.88
102+50	5167.78	5166.84
102+75	5167.07	5165.68
103+00	5166.38	5164.83
103+25	5165.39	5163.89
103+50	5164.53	5162.94
103+75	5163.72	5161.99
104+00	5162.85	5161.21
104+25	5161.89	5160.50
104+50	5160.99	5159.60
104+75	5160.33	5158.73
105+00	5159.53	5157.98

NON-PARTICIPATING



TY LIN INTERNATIONAL
engineers | planners | scientists
500 4th Street NW Suite 403
Bank of America Centre
Albuquerque, NM 87102

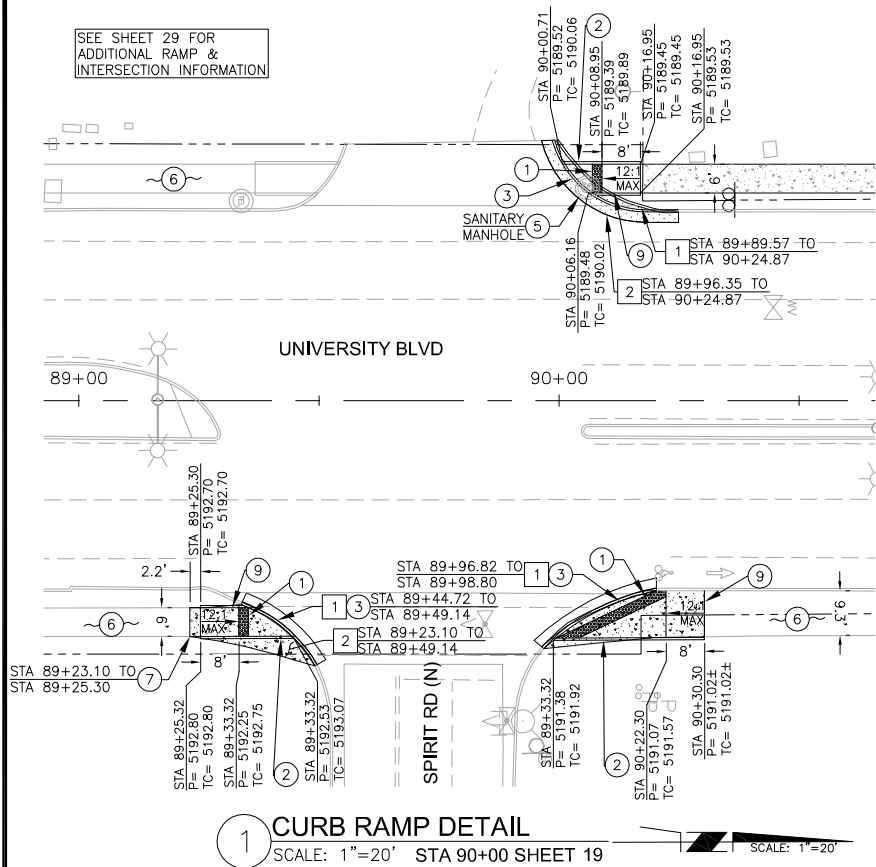
CITY OF ALBUQUERQUE
MUNICIPAL DEVELOPMENT DEPARTMENT
ENGINEERING DIVISION

TITLE: **UNIVERSITY BLVD BIKEWAYS - PHASE 2**
PLAN VIEW
STA 89+00 TO 105+00

Design Review Committee City Engineer Approval

City Project No. 7956.92 (A300111) Zone Map No. L15, M15 Sheet 19 Of 140

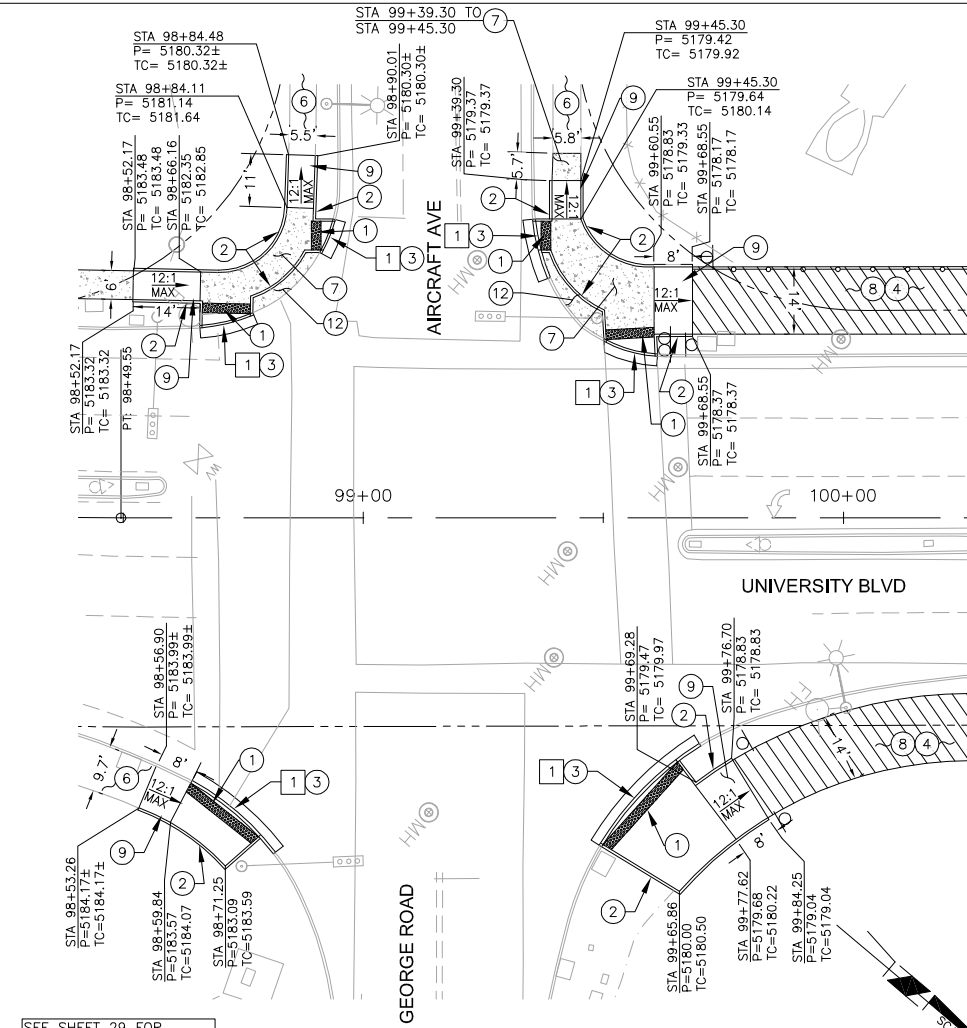
SEE SHEET 29 FOR
ADDITIONAL RAMP &
INTERSECTION INFORMATION



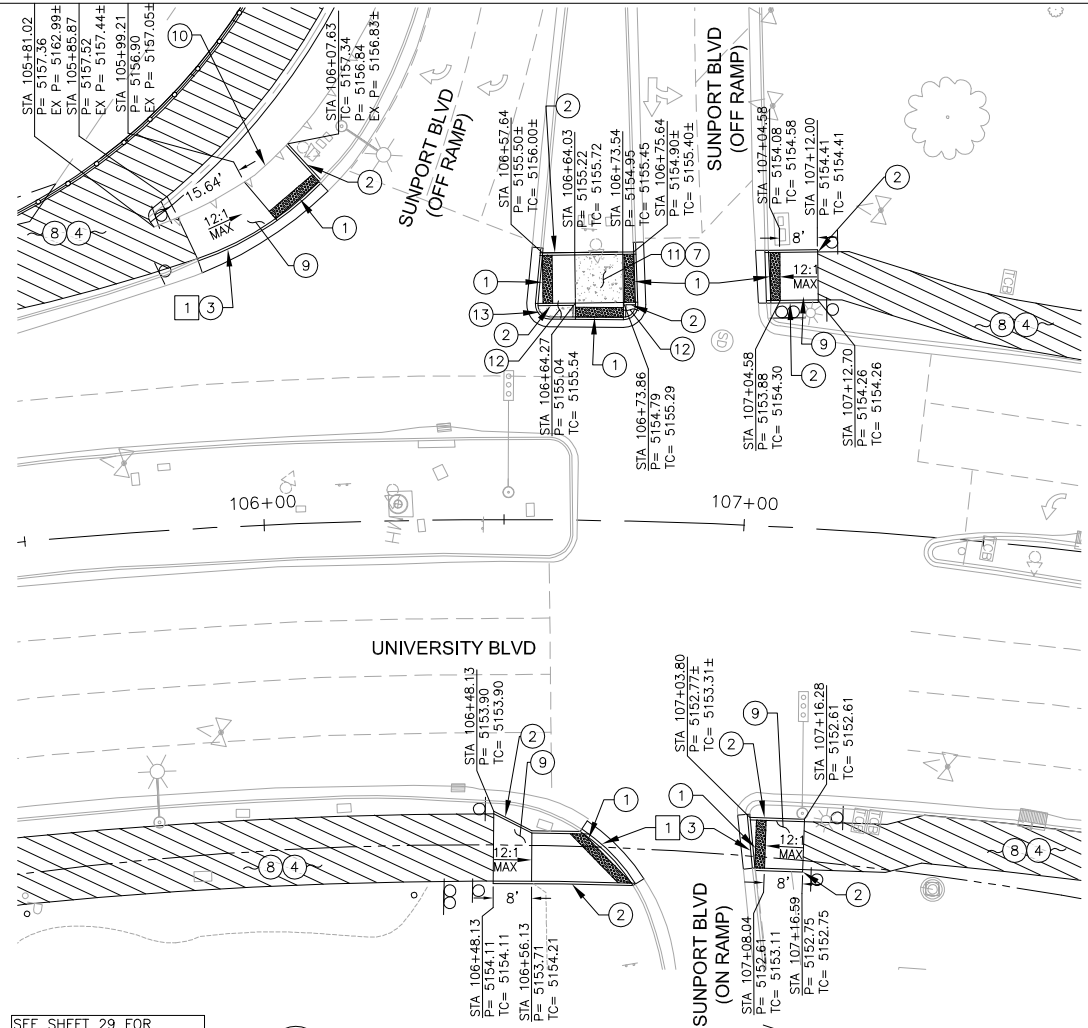
1 CURB RAMP DETAIL
SCALE: 1"=20' STA 90+00 SHEET 19

GENERAL NOTES:

- THESE DRAWINGS PROVIDE GUIDANCE FOR COMPLIANCE WITH THE CURRENT PUBLIC RIGHT OF WAY ACCESSIBILITY GUIDELINES (PROWAG). THESE STANDARDS SHALL APPLY TO ALL NEW AND ALTERED SIDEWALKS.
- SURFACES SHALL BE STABLE, FIRM, AND SLIP RESISTANT. SIDEWALK AND CURB RAMP SURFACES SHALL PROVIDE CONSISTENT SLOPES WITHIN EACH SECTION.
- ALL BROOM FINISHES SHALL BE PERPENDICULAR TO THE DIRECTION OF PEDESTRIAN TRAVEL.
- A VERTICAL CHANGE OF 1/4 INCH (6mm) OR LESS IS ALLOWED. IF BETWEEN 1/4 INCH AND 1/2 INCH (6mm AND 13mm), THEN IT NEEDS TO BE BEVELED 2:1. CHANGES GREATER THAN 1/2 INCH SHALL BE RAMPED.
- OPENINGS OR CRACKS IN SIDEWALK SURFACES SHALL NOT EXCEED 1/2 INCH (13mm). ELONGATED OPENINGS SHOULD BE PLACED SO THAT THE LONG DIMENSION IS PERPENDICULAR OR DIAGONAL.
- THE LEAST POSSIBLE CURB RAMP SLOPE SHALL BE USED. CURB RAMP RUNNING SLOPE SHALL NOT EXCEED 8.3% (12:1). WHERE EXISTING TERRAIN IS STEEP, CURB RAMP NEED NOT EXCEED 15 FEET IN LENGTH.
- PROVIDE A FLUSH TRANSITION BETWEEN CURB RAMP, SIDEWALKS, GUTTER, AND EDGE OF PAVEMENT, FREE OF DRAINAGE LIP, ABRUPT GRADE CHANGES, DROP-OFFS, OR ANY SURFACE IRREGULARITIES. A 5% (20:1) OR FLATTER TRANSITION TAPER SHALL BE PROVIDED FROM THE STREET TO THE GUTTER FOR CURB RAMP LOCATIONS (THIS MAY REQUIRE SPECIAL TREATMENT OF THE EDGE OF O.G.F.C.) WHEN DIAGONAL (NOT IN LINE WITH CROSSWALKS) CURB RAMP ARE NECESSARY. A 2% (50:1) TRANSITION OR "LOWER LANDING" SHALL BE PROVIDED. THE GUTTER RUNNING SLOPE (FLOW LINE) SHALL NOT EXCEED 2% MEASURED ALONG THE BOTTOM OF THE RAMP.
- CURB RAMP SHALL BE LOCATED TO PROVIDE THE MOST DIRECT ROUTE OF TRAVEL ACROSS THE TRAFFIC LANES.
- TWO DIRECTIONAL (IN LINE WITH THE CROSSWALKS) CURB RAMP PER CORNER ARE USED IN ORDER TO PROVIDE SHORT AND DIRECT CROSSINGS FOR THE USER.
- SIGN POSTS, UTILITY POLES, FIRE HYDRANTS, TRAFFIC SIGNAL STANDARDS, LIGHT POLES, PULL BOXES, METERS, VALVES, ETC., SHALL NOT BE, TO THE EXTENT POSSIBLE, LOCATED IN THE CURB RAMP INCLUDING SIDE FLARES AND LANDINGS.
- IN ORDER TO BETTER ACCOMMODATE CONDITIONS IN THE FIELD, THE CONTRACTOR SHALL OBTAIN FINAL APPROVAL OF CURB RAMP LOCATIONS FROM THE PROJECT MANAGER AND THE CITY TRAFFIC ENGINEER. WHEN NECESSITATED BY EXISTING PHYSICAL CONDITIONS. ALTERNATE CURB RAMP MUST BE SUBMITTED TO THE PROJECT MANAGER FOR APPROVAL BY THE CITY TRAFFIC ENGINEER.
- LANDINGS SHALL BE A MINIMUM OF 5' X 5'. SLOPES SHALL NOT EXCEED 2% (50:1) IN ALL DIRECTIONS.
- DETECTABLE WARNINGS ARE REQUIRED AT ALL STREET INTERSECTIONS, SIGNALIZED DRIVEWAYS, COMMERCIAL DRIVEWAYS 30' WIDE OR GREATER, AND MARKED MID-BLOCK CROSSWALKS.
- SUBMIT SPECIFICATIONS TO CONSTRUCTION ENGINEER FOR EVALUATION PRIOR TO CONSTRUCTION.
- SEE SHEET 29 THROUGH 32 AND THE APPROPRIATE PLAN & PROFILE SHEETS FOR ELEVATIONS.
- CONTRACTOR IS TO ENSURE THE PEDESTRIAN TRAVELED PATHS CROSSING INTERSECTIONS AND DRIVEWAYS ARE COMPLIANT.
- CONTRACTOR TO REMOVE EXISTING SIDEWALK TO NEAREST JOINT WHEN TYING IN PROPOSED CURB RAMP. SIDEWALK REPLACEMENT TO NEXT JOINT SHALL BE INCIDENTAL TO THE PROJECT.
- ALL SIDEWALKS, TRAILS, AND CURB RAMP SHALL BE INSTALLED IN ACCORDANCE WITH THE PROPOSED ACCESSIBILITY GUIDELINES FOR PEDESTRIAN FACILITIES IN THE PUBLIC RIGHT-OF-WAY. ALL DETECTABLE WARNING SURFACE (TRUNCATED DOMES) ARE CONSIDERED INCIDENTAL TO THE COMPLETION OF THE CURB RAMP AND NO SEPARATE MEASUREMENT SHALL BE MADE THEREFORE.
- SEE GENERAL NOTE #38 ON SHEET 3 FOR ADDITIONAL CURB RAMP REQUIREMENTS.



2 CURB RAMP DETAIL
SCALE: 1"=20' STA 99+25 SHEET 19



3 CURB RAMP DETAIL
SCALE: 1"=20' STA 106+50 SHEET 20

SEE SHEET 29 FOR
ADDITIONAL RAMP &
INTERSECTION INFORMATION

SEE SHEET 29 FOR
ADDITIONAL RAMP &
INTERSECTION INFORMATION

REMOVAL/RELOCATE		AS BUILT INFORMATION	
NO.	DESCRIPTION	DATE	DATE
1	REMOVE EXISTING STANDARD CURB & GUTTER		194 LF
2	2' SAWCUT, REMOVE EXISTING ASPHALT PAVEMENT		8 SY
CONSTRUCTION NOTES		BENCH MARKS	
NO.	DESCRIPTION	NO.	DESCRIPTION
1	INSTALL 2" DETECTABLE WARNING SURFACE PERPENDICULAR TO TRAVEL PATH, PER PROWAG STANDARDS	1	CONTRACTOR
2	6" HEADER CURB PER COA STD DWG 2415	2	STAKED BY
3	CONSTRUCT NEW STANDARD CURB AND GUTTER PER COA STD DWG 2415	3	INSPECTOR'S
4	CONSTRUCT TRAIL PER PAVEMENT STRUCTURAL SECTION SHOWN ON SHEET 6	4	FIELD
5	ADJUST MANHOLE OR VALVE BOX TO GRADE	5	DATE
6	EXISTING SIDEWALK TO REMAIN AND TO BE PROTECTED	6	DATE
7	CONSTRUCT SIDEWALK PER COA STD DWG 2430 INCLUDING SUBGRADE	7	DATE
8	SUBGRADE PREPARATION	8	DATE
9	CONSTRUCT CURB RAMP PER DETAILS ON THIS SHEET	9	DATE
10	EXISTING RETAINING WALL TO REMAIN AND TO BE PROTECTED	10	DATE
11	CONSTRUCT PEDESTRIAN REFUGE	11	DATE
12	CONSTRUCT MEDIAN PAVING PER COA STD DWG 2408	12	DATE
13	CONSTRUCT NEW MEDIAN CURB AND GUTTER PER COA STD DWG 2415	13	DATE

ENGINEER'S SEAL

95% REVIEW

NO.	DATE	REMARKS	BY
		DESIGN	
		REVISIONS	

DESIGNED BY: B.LONG DATE: 09/2016
 DRAWN BY: B.LONG DATE: 09/2016
 CHECKED BY: E.FROBERG DATE: 09/2016

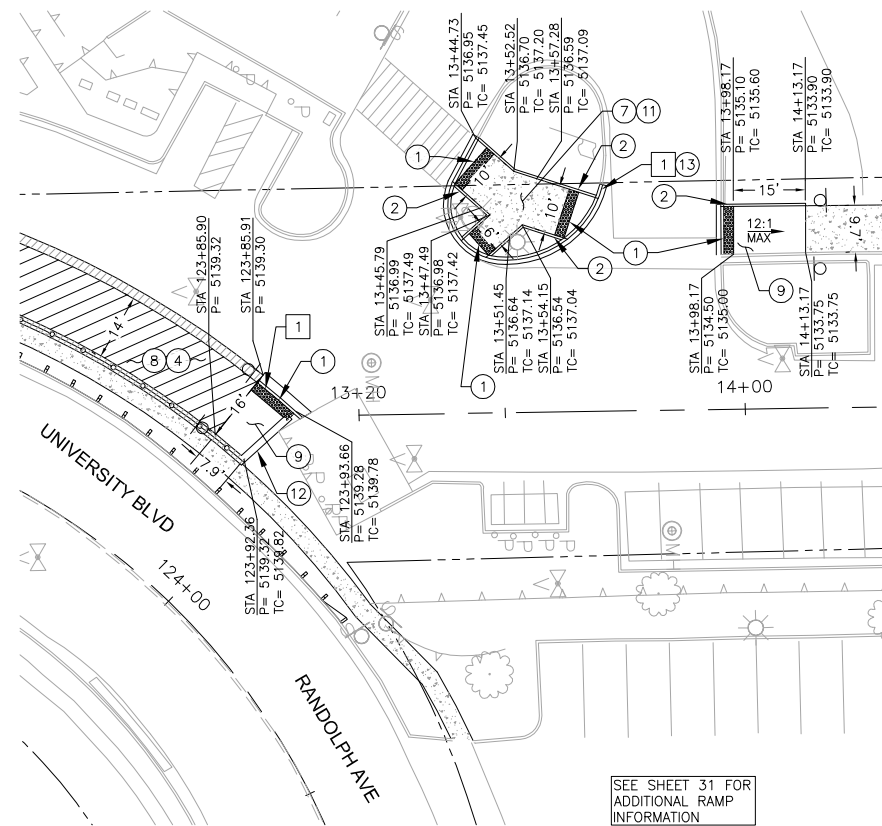
TY LIN INTERNATIONAL
 engineers | planners | scientists
 500 4th Street NW Suite 403
 Bank of America Centre
 Albuquerque, NM 87102

CITY OF ALBUQUERQUE
 MUNICIPAL DEVELOPMENT DEPARTMENT
 ENGINEERING DIVISION

TITLE: UNIVERSITY BLVD BIKEWAYS - PHASE 2 CURB RAMP DETAILS

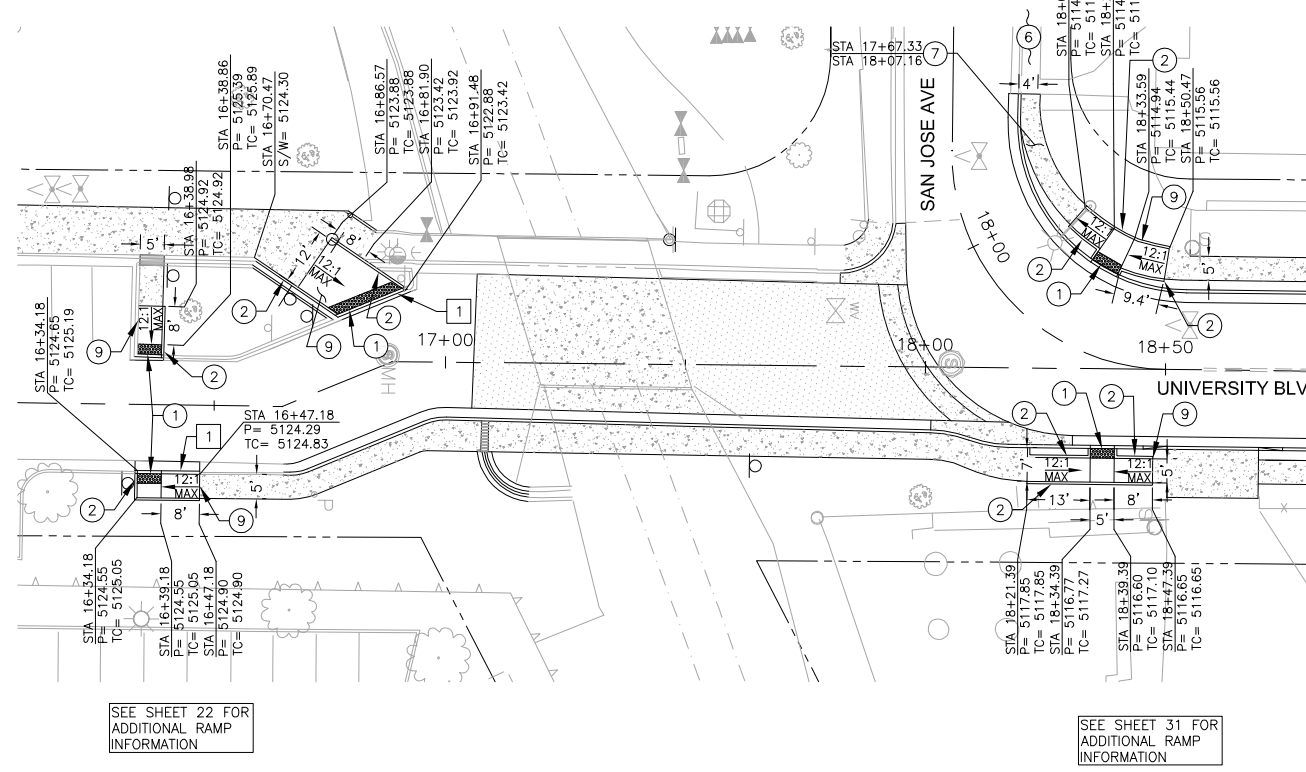
Design Review Committee	City Engineer Approval	Mo./Day/Yr.	Mo./Day/Yr.

City Project No. 7956.92 (A300111) Zone Map No. L15, M15 Sheet 24 Of 140



7 CURB RAMP DETAIL
SCALE: 1"=20' STA 124+00 SHEET 21

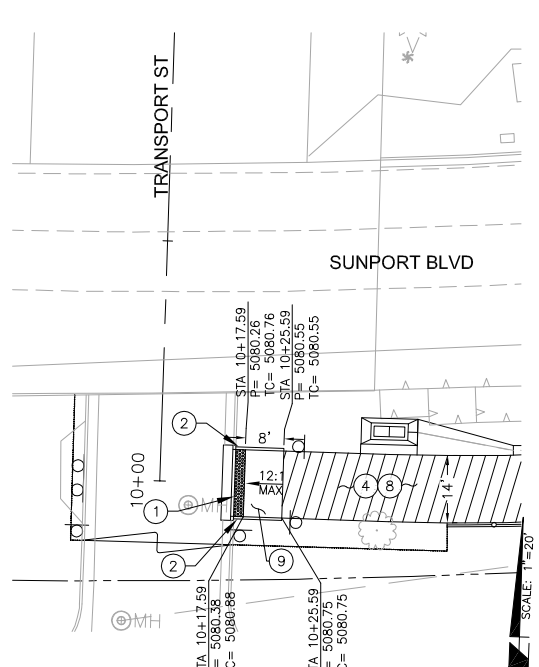
SEE SHEET 31 FOR ADDITIONAL RAMP INFORMATION



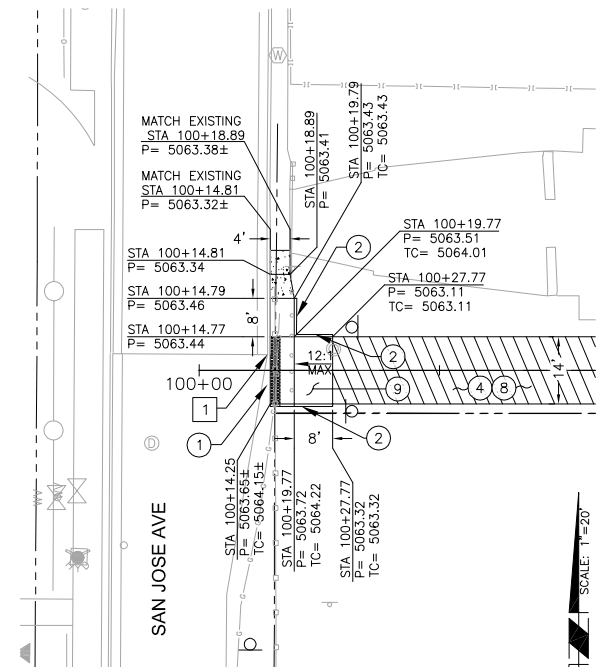
8 CURB RAMP DETAIL
SCALE: 1"=20' STA 17+50 SHEETS 13 & 22

SEE SHEET 22 FOR ADDITIONAL RAMP INFORMATION

SEE SHEET 31 FOR ADDITIONAL RAMP INFORMATION



9 CURB RAMP DETAIL
SCALE: 1"=20' STA 10+25 SHEET 15



10 CURB RAMP DETAIL
SCALE: 1"=20' STA 100+27 SHEET 17

REMOVAL/RELOCATE		AS BUILT INFORMATION	
NO.	DATE	CONTRACTOR	DATE
1			

CONSTRUCTION NOTES		BENCH MARKS	
NO.	DESCRIPTION	NO.	DESCRIPTION
1	CONSTRUCT 2" DETECTABLE WARNING SURFACE PERPENDICULAR TO TRAVEL PATH, PER PROWAG STANDARDS	12	EA
2	6" HEADER CURB PER COA STD DWG 2415	310	LF
3	CONSTRUCT NEW STANDARD CURB AND GUTTER PER COA STD DWG 2415		
4	CONSTRUCT TRAIL PER PAVEMENT STRUCTURAL SECTION SHOWN ON SHEET 6		
5	ADJUST MANHOLE OR VALVE BOX TO GRADE		
6	EXISTING SIDEWALK TO REMAIN AND TO BE PROTECTED		
7	CONSTRUCT SIDEWALK PER COA STD DWG 2430 INCLUDING SUBGRADE	14	SY
8	SUBGRADE PREPARATION		
9	CONSTRUCT CURB RAMP PER DETAILS ON THIS SHEET	11	EA
11	CONSTRUCT PEDESTRIAN REFUGE	1	EA
12	CONSTRUCT NEW RETAINING WALL PER DETAILS SHOWN IN SHEET 21		
13	CONSTRUCT NEW MEDIAN CURB AND GUTTER PER COA STD DWG 2415		

GENERAL NOTES
1. SEE GENERAL NOTES ON SHEET 24.

SURVEY INFORMATION		FIELD NOTES	
NO.	BY	NO.	DATE

ENGINEER'S SEAL

95% REVIEW

NO.	DATE	REMARKS	BY
		DESIGN	

DESIGNED BY: B.LONG DATE: 09/2016
DRAWN BY: B.LONG DATE: 09/2016
CHECKED BY: E.FROBERG DATE: 09/2016

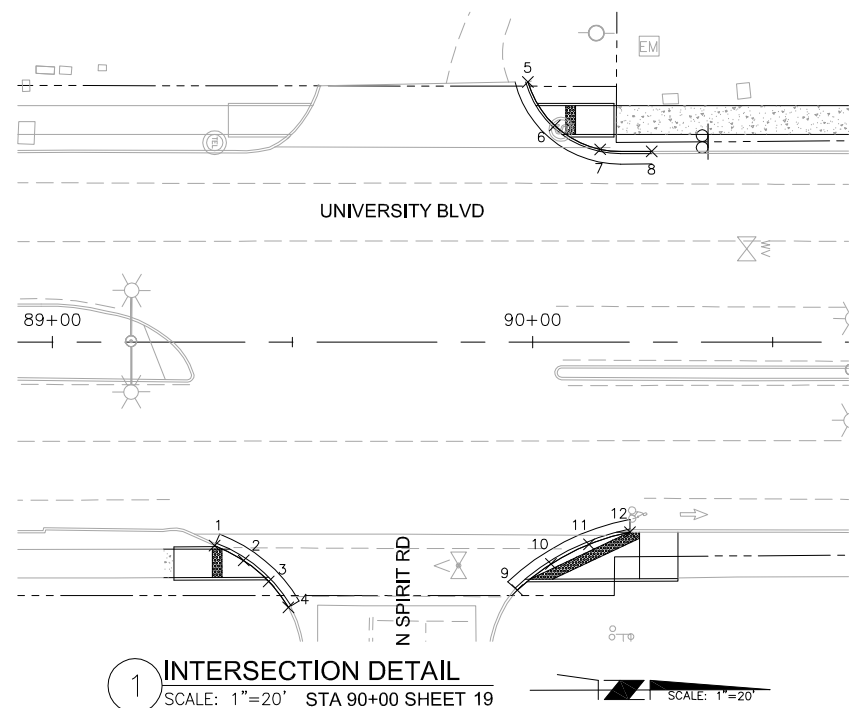
TY LIN INTERNATIONAL
engineers | planners | scientists
500 4th Street NW Suite 403
Bank of America Centre
Albuquerque, NM 87102

CITY OF ALBUQUERQUE
MUNICIPAL DEVELOPMENT DEPARTMENT
ENGINEERING DIVISION

TITLE: UNIVERSITY BLVD BIKEWAYS - PHASE 2 CURB RAMP DETAILS

Design Review Committee	City Engineer Approval	Mo./Day/Yr.	Mo./Day/Yr.

City Project No. 7956.92 (A300111) Zone Map No. L15, M15 Sheet 26 Of 140



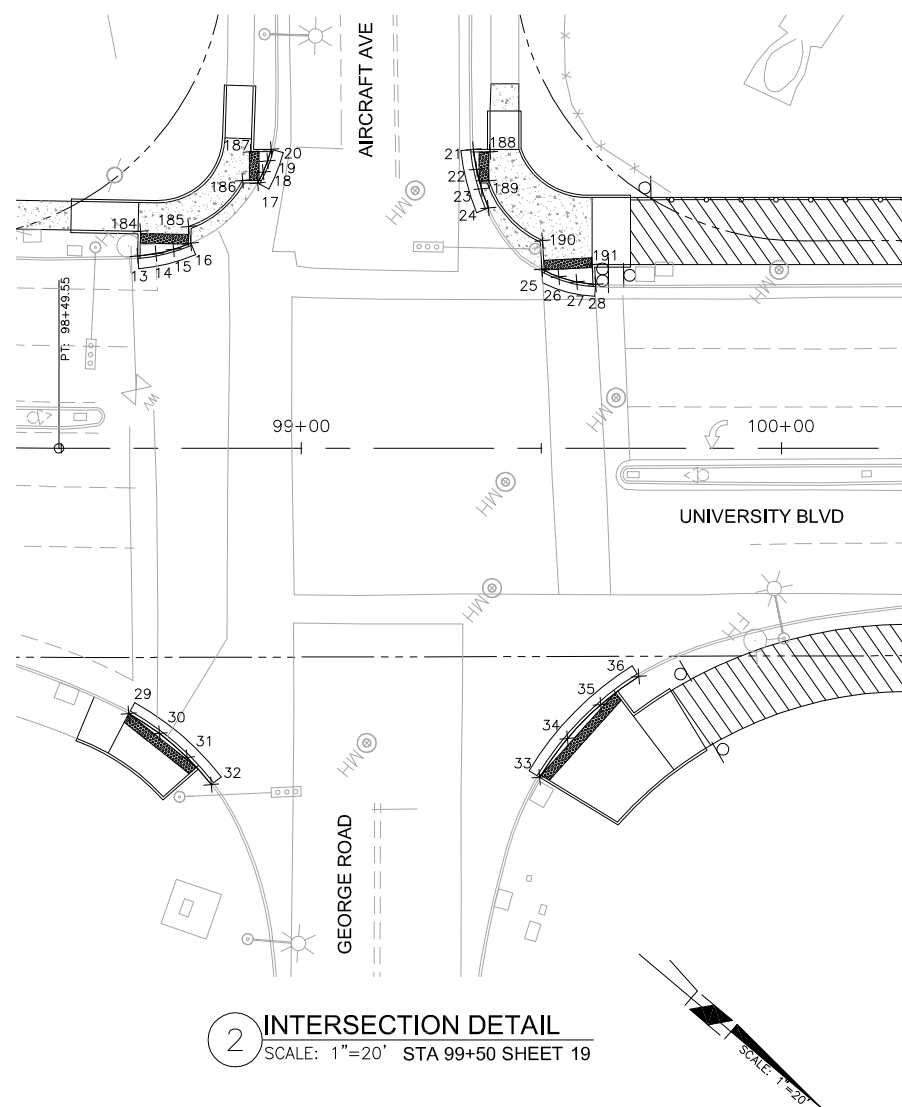
1 INTERSECTION DETAIL
SCALE: 1"=20' STA 90+00 SHEET 19

POINT TABLE				
POINT #	ELEVATION	NORTHING	EASTING	DESCRIPTION
1	5192.89±	1471853.54	1527606.07	BC
2	5192.27	1471859.59	1527609.15	LANDING
3	5193.08	1471864.79	1527613.52	BC
4	5193.23±	1471868.88	1527618.94	BC
5	5190.49±	1471919.01	1527509.55	BC
6	5189.36	1471924.55	1527518.67	LANDING
7	5190.08	1471934.00	1527523.64	BC
8	5190.03±	1471944.77	1527524.08	BC
9	5192.13±	1471916.56	1527615.44	BC
10	5191.15	1471923.60	1527610.01	LANDING
11	5191.02	1471931.51	1527605.95	LANDING
12	5191.42±	1471940.03	1527603.41	BC
13	5183.20±	1472711.58	1527335.78	BC
14	5182.37	1472714.14	1527332.96	LANDING
15	5182.18	1472716.39	1527329.89	LANDING
16	5182.71±	1472718.29	1527326.59	BC
17	5181.74±	1472720.86	1527308.04	BC
18	5180.98	1472720.25	1527305.59	LANDING
19	5180.86	1472719.46	1527303.21	LANDING
20	5181.41±	1472718.49	1527300.88	BC
21	5180.03±	1472750.67	1527273.73	BC
22	5179.40	1472753.85	1527276.48	LANDING
23	5180.10	1472757.27	1527278.91	BC
24	5180.14±	1472760.90	1527281.02	BC
25	5180.01±	1472777.63	1527283.59	BC
26	5179.20	1472781.40	1527282.53	LANDING

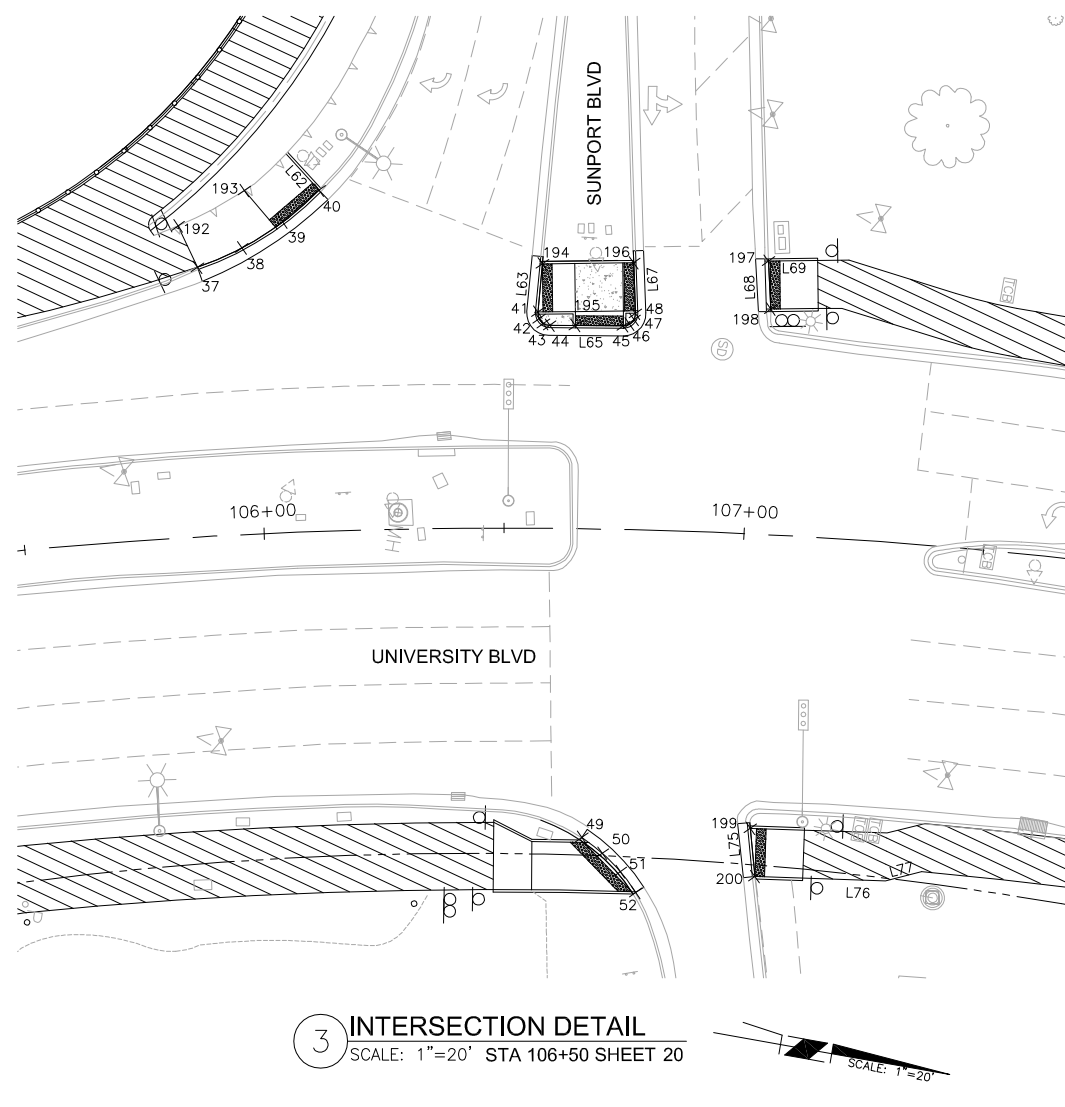
POINT TABLE				
POINT #	ELEVATION	NORTHING	EASTING	DESCRIPTION
27	5179.04	1472784.96	1527280.93	LANDING
28	5179.57±	1472788.24	1527278.81	BC
29	5183.67±	1472771.62	1527409.80	LANDING
30	5183.41	1472779.15	1527408.85	LANDING
31	5183.14	1472786.74	1527408.92	LANDING
32	5183.37±	1472794.25	1527410.02	BC
33	5180.93±	1472845.57	1527364.74	BC
34	5179.89	1472844.77	1527354.88	LANDING
35	5179.37	1472845.52	1527345.01	LANDING
36	5179.51±	1472847.80	1527335.38	BC
37	5157.79±	1473323.14	1526923.36	BC
38	5157.58	1473331.54	1526917.79	BC
39	5156.73	1473338.97	1526910.98	LANDING
40	5156.86±	1473345.27	1526903.11	LANDING
41	5155.85	1473394.57	1526920.18	BC
42	5155.83	1473395.05	1526921.46	BC
43	5155.81	1473396.13	1526922.30	BC
44	5155.79	1473397.48	1526922.45	BC
45	5155.44	1473412.61	1526919.87	BC
46	5155.42	1473413.81	1526919.30	BC
47	5155.41	1473414.55	1526918.20	BC
48	5155.40	1473414.63	1526916.88	BC
49	5152.81±	1473422.69	1527026.29	BC
50	5153.02	1473427.46	1527028.77	BC
51	5152.89	1473431.84	1527031.90	BC
52	5152.62±	1473435.75	1527035.61	BC

POINT TABLE				
POINT #	ELEVATION	NORTHING	EASTING	DESCRIPTION
184	5182.39	1472708.73	1527331.47	LANDING
185	5182.02	1472715.74	1527324.24	LANDING
186	5181.27	1472718.14	1527309.68	LANDING
187	5180.97	1472715.61	1527303.96	LANDING
188	5179.57	1472753.64	1527271.88	BC
189	5179.55	1472757.33	1527276.62	BC
190	5179.36	1472773.95	1527278.95	BC
191	5179.03	1472785.04	1527276.13	BC
192	5157.52	1473317.65	1526915.58	LANDING
193	5156.90	1473329.96	1526905.93	LANDING
194	5155.50	1473393.75	1526910.11	LANDING
195	5155.15	1473402.75	1526921.55	LANDING
196	5154.90	1473412.41	1526906.56	LANDING
197	5154.20	1473440.00	1526901.33	LANDING
198	5153.91	1473442.22	1526911.09	LANDING
199	5152.77	1473456.90	1527018.29	LANDING
200	5152.73	1473459.60	1527028.00	LANDING

SEE SHEET 23 FOR BACK OF CURB, SIDEWALK, AND TRAIL CURVE & LINE TABLES



2 INTERSECTION DETAIL
SCALE: 1"=20' STA 99+50 SHEET 19



3 INTERSECTION DETAIL
SCALE: 1"=20' STA 106+50 SHEET 20

AS-BUILT INFORMATION				
NO.	DATE	CONTRACTOR	DATE	RECORDED BY

ENGINEER'S SEAL
95% REVIEW

NO.	DATE	REMARKS	BY

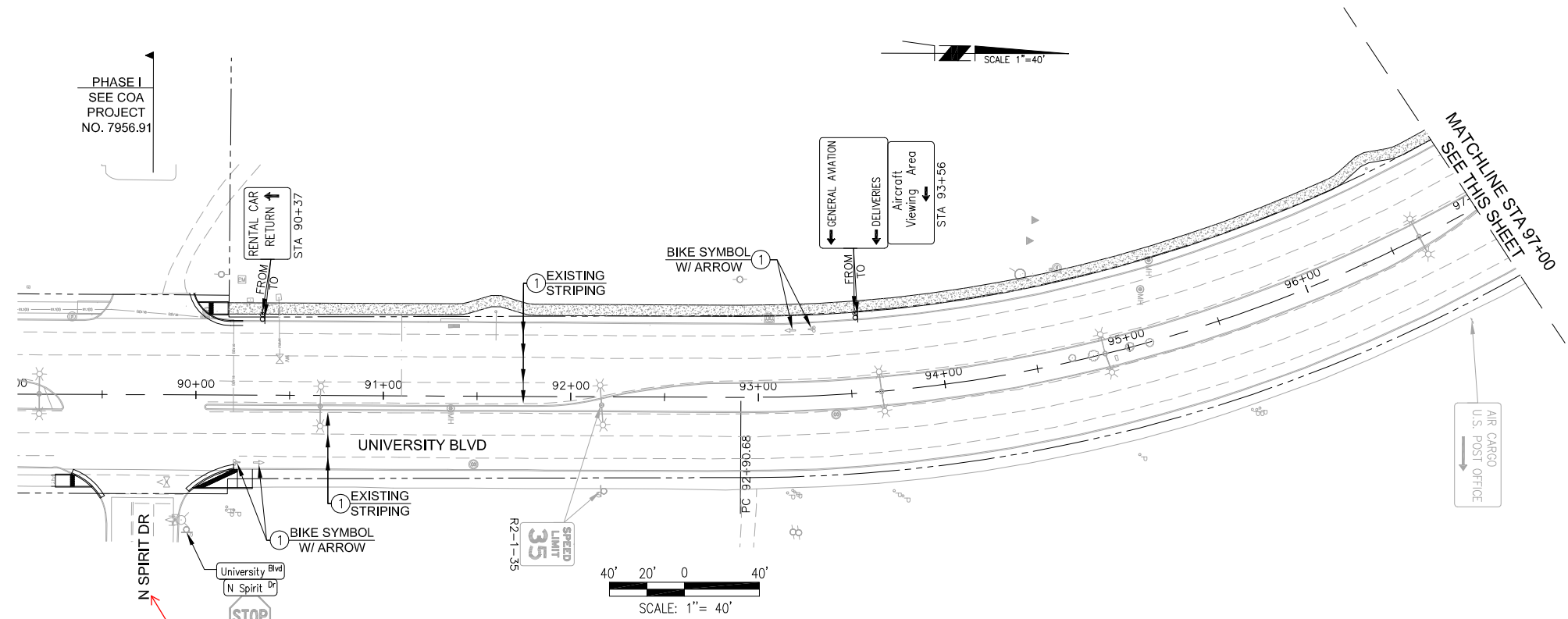
DESIGN REVIEW COMMITTEE		CITY ENGINEER APPROVAL		Mo./Day/Yr.	Mo./Day/Yr.

TY LIN INTERNATIONAL
engineers | planners | scientists
500 4th Street NW Suite 403
Bank of America Centre
Albuquerque, NM 87102

CITY OF ALBUQUERQUE
MUNICIPAL DEVELOPMENT DEPARTMENT
ENGINEERING DIVISION

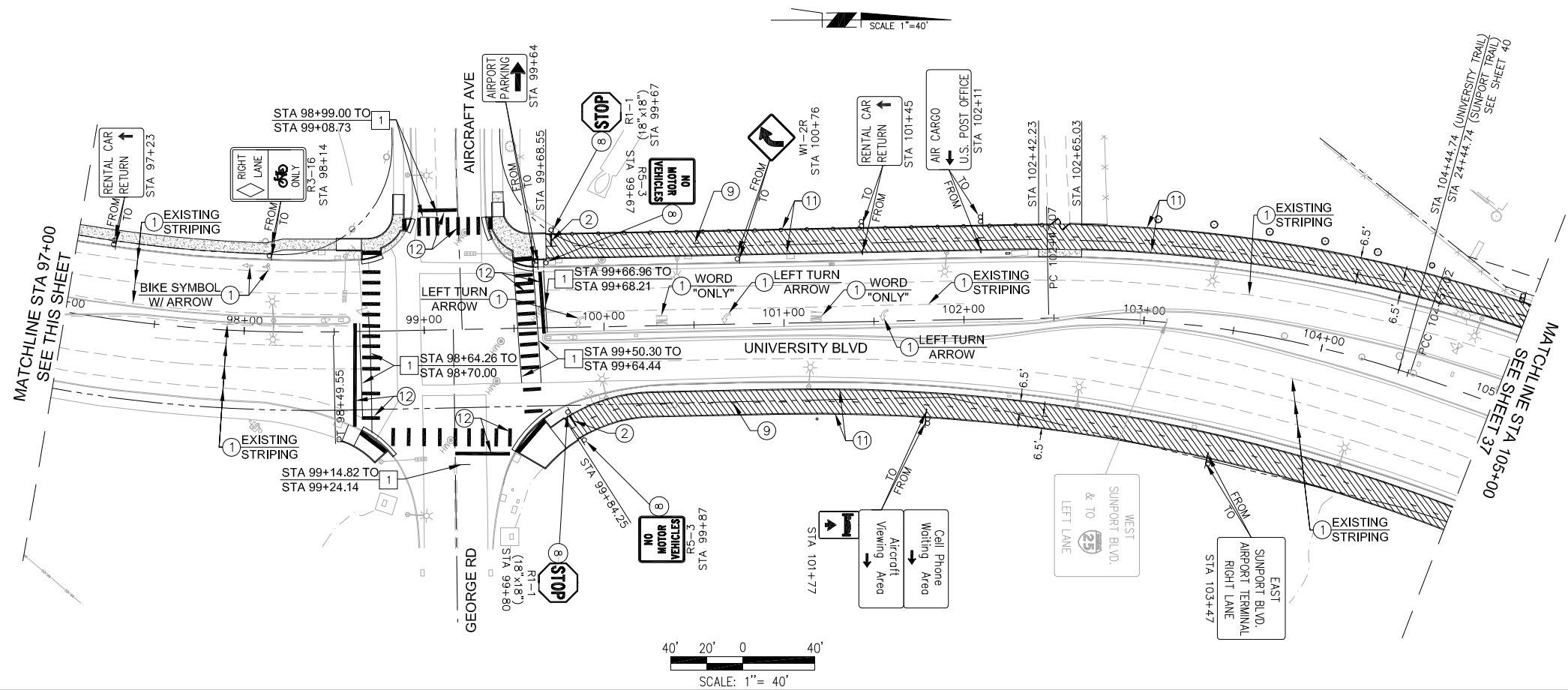
TITLE: UNIVERSITY BLVD BIKEWAYS - PHASE 2 INTERSECTION DETAILS

City Project No. 7956.92 (A300111) Zone Map No. L15, M15 Sheet 29 of 140



SEE TABLE SHEET 33 FOR SIGN (D3-1) SIZE. FOR (D3-1) SIGN DETAILS SEE COA STD DWG 2900-606

Access Rd B



REMOVALS		
1	REMOVE EXISTING 6" STRIPE	304 LF
GENERAL CONSTRUCTION NOTES		
1	PROTECT IN PLACE	
2	INSTALL 12" STOP BAR WITH PLASTIC WORD "STOP"	14 LF
8	INSTALL NEW SIGN W/ NEW SIGN POST PER DETAIL ON SHEET 34 & 35	
9	INSTALL 4" BROKEN YELLOW STRIPE (3' SEGMENT W/9" GAP)	1,048 LF
11	INSTALL 4" WHITE SOLID STRIPE	2,047 LF
12	INSTALL 24" WHITE SOLID MARKINGS PER DETAIL ON SHEET 33	544 LF

SURVEY INFORMATION		FIELD NOTES	
NO.	BY	NO.	DATE

SIGNING LEGEND:

	NEW/REMOVE & RELOCATED SIGN	19 EA
	REMOVE & SALVAGE	
	PROTECT IN PLACE	

TOTAL NEW SIGN: 16.67 SF
TOTAL NEW SIGN POST: 43.0 LF

260-1990

TY LIN INTERNATIONAL
engineers | planners | scientists
500 4th Street NW Suite 403
Bank of America Centre
Albuquerque, NM 87102

CITY OF ALBUQUERQUE
MUNICIPAL DEVELOPMENT DEPARTMENT
ENGINEERING DIVISION

TITLE: **UNIVERSITY BLVD BIKEWAYS - PHASE 2**
SIGNING & STRIPING
STA 90+00 TO 105+00

NO.	DATE	REMARKS	BY

DESIGNED BY: B.LONG DATE: 09/2016
DRAWN BY: B.LONG DATE: 09/2016
CHECKED BY: E.FROBERG DATE: 09/2016

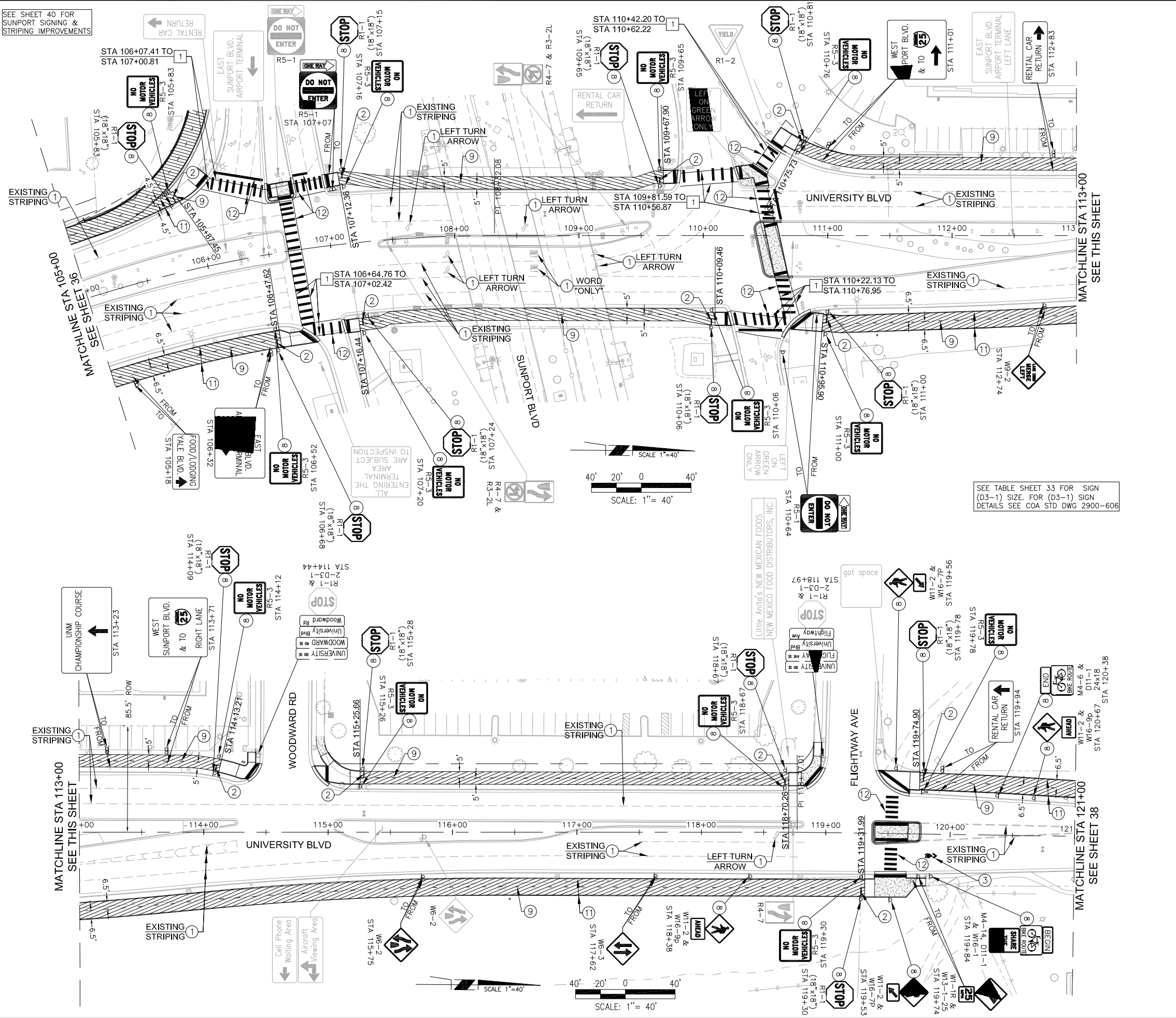
Design Review Committee	City Engineer Approval	Mo./Day/Yr.	Mo./Day/Yr.
City Project No.	Zone Map No.	Sheet	Of
7956.92 (A300111)	L15, M15	36	140

AS BUILT INFORMATION	
CONTRACTOR	DATE
INSPECTOR'S	DATE
FIELD CHANGE BY	DATE
VERIFICATION BY	DATE
APPROVED BY	DATE
CORRECTED BY	DATE
RECORDED BY	DATE

ENGINEER'S SEAL

95% REVIEW

NO.	DATE	REVISIONS	DESIGN



REMOVALS		AS BUILT INFORMATION
1	REMOVE EXISTING 6" STRIPE	889 LF
GENERAL CONSTRUCTION NOTES		
1	PROTECT IN PLACE	
2	INSTALL 12" STOP BAR WITH PLASTIC WORD "STOP"	73 LF
3	INSTALL A SHARED LANE MARKING PER DETAIL ON SHEET 33	1 EA
8	INSTALL NEW SIGN W/ NEW SIGN POST PER DETAIL ON SHEET 34 & 35	
9	INSTALL 4" BROKEN YELLOW STRIPE (3' SEGMENT W/9" GAP)	2,369 LF
11	INSTALL 4" WHITE SOLID STRIPE	2,292 LF
12	INSTALL 24" WHITE SOLID MARKINGS (CROSSWALK) PER DETAIL ON SHEET 33	832 LF

SIGNING LEGEND:

	NEW/REMOVE & RELOCATED SIGN	59 EA
	REMOVE & SALVAGE	4 EA
	PROTECT IN PLACE	

TOTAL NEW SIGN:	129.75 SF
TOTAL NEW SIGN POST:	352.2 LF

260-1990

TY LIN INTERNATIONAL
 engineers | planners | scientists
 500 4th Street NW Suite 403
 Bank of America Centre
 Albuquerque, NM 87102

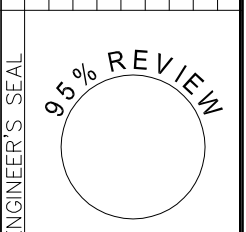
CITY OF ALBUQUERQUE
 MUNICIPAL DEVELOPMENT DEPARTMENT
 ENGINEERING DIVISION

TITLE: UNIVERSITY BLVD BIKEWAYS - PHASE 2
 SIGNING & STRIPING
 STA 105+00 TO 121+00

Design Review Committee: City Engineer Approval

City Project No. 7956.92 (A300111) | Zone Map No. L15, M15 | Sheet 37 of 140

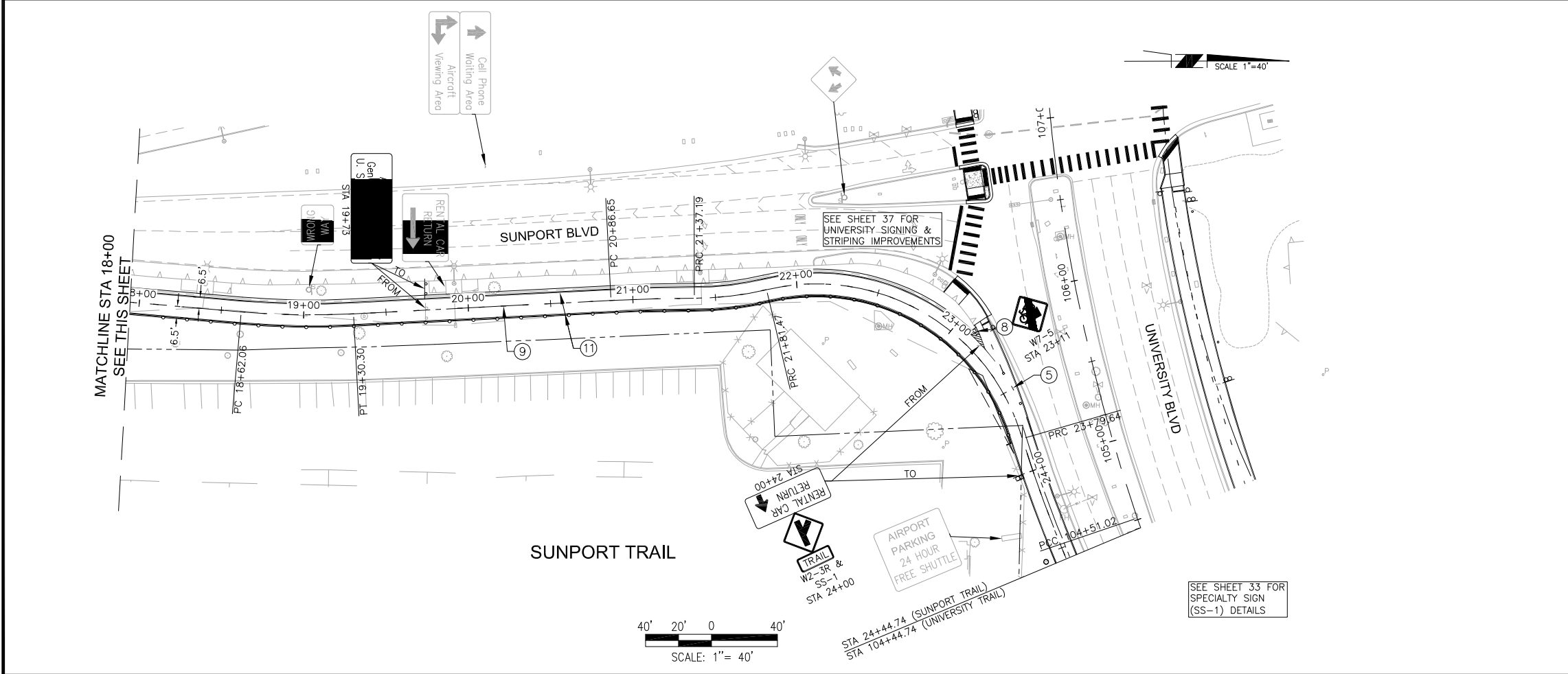
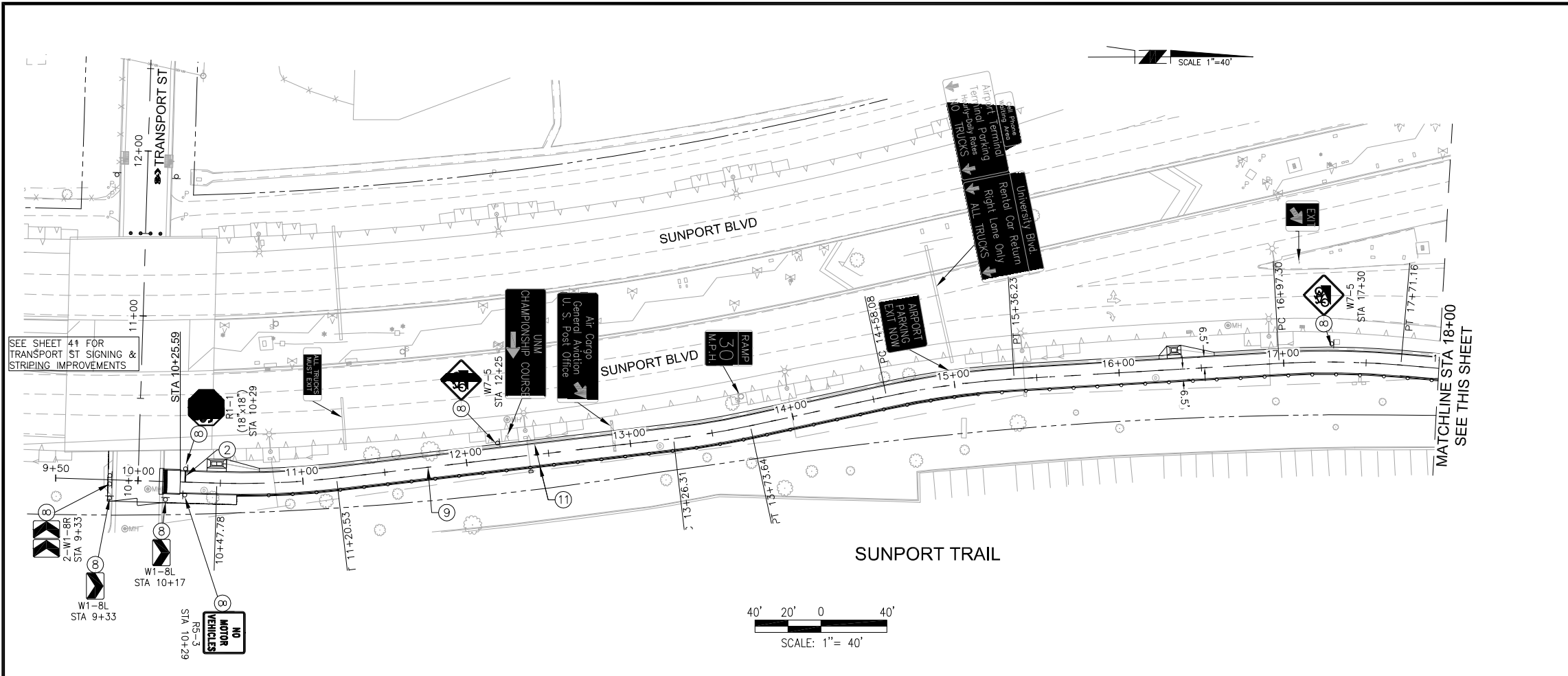
SURVEY INFORMATION		BENCH MARKS		AS BUILT INFORMATION	
NO.	DATE	NO.	DATE	NO.	DATE



NO.	DATE	REVISIONS	BY

DESIGNED BY: B.LONG
 DRAWN BY: B.LONG
 CHECKED BY: E.FROBERG

DATE: 09/2016
 DATE: 09/2016
 DATE: 09/2016



○ GENERAL CONSTRUCTION NOTES ○

1	PROTECT IN PLACE	
2	INSTALL 12" STOP BAR WITH PLASTIC WORD "STOP"	7 LF
5	INSTALL 6" DOTTED WHITE STRIPE (2' STRIPE, 2' SKIP)	58 LF
8	INSTALL NEW SIGN W/ NEW SIGN POST PER DETAIL ON SHEET 34 & 35	
9	INSTALL 4" BROKEN YELLOW STRIPE (3' SEGMENT W/9" GAP)	1,371 LF
11	INSTALL 4" WHITE SOLID STRIPE	2,684 LF

AS BUILT INFORMATION		BENCH MARKS	
CONTRACTOR	DATE	CONTRACTOR	DATE
WORK STAKED BY	DATE	CONTRACTOR	DATE
INSPECTOR'S DATE	DATE	CONTRACTOR	DATE
FIELD CHANGE BY	DATE	CONTRACTOR	DATE
VERIFICATION BY	DATE	CONTRACTOR	DATE
APPROVED BY	DATE	CONTRACTOR	DATE
CORRECTED BY	DATE	CONTRACTOR	DATE
MICRO-FILM INFORMATION		CONTRACTOR	DATE
		CONTRACTOR	DATE

SIGNING LEGEND:

SPEED LIMIT 30	NEW/REMOVE & RELOCATED SIGN	13 EA
SPEED LIMIT 30	REMOVE & SALVAGE	
SPEED LIMIT 30	PROTECT IN PLACE	

ENGINEER'S SEAL

95% REVIEW

NO.	DATE	REVISIONS	BY
		DESIGN	

DESIGNED BY: B.LONG DATE: 09/2016
 DRAWN BY: B.LONG DATE: 09/2016
 CHECKED BY: E.FROBERG DATE: 09/2016

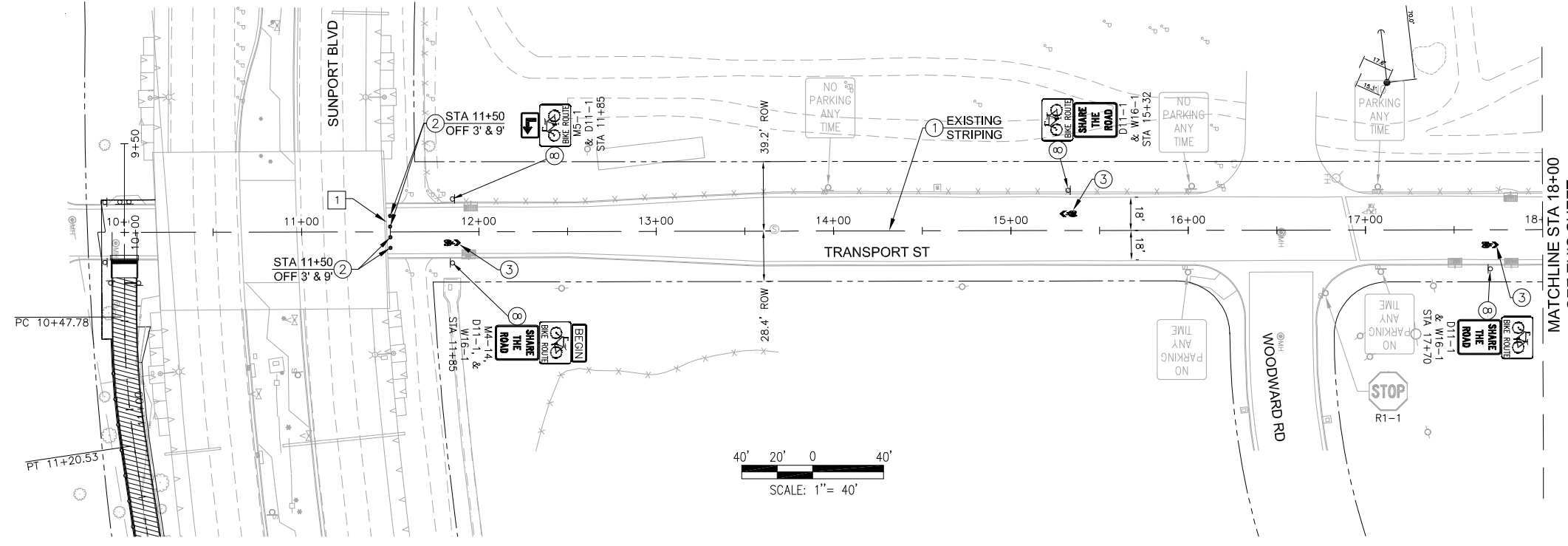
TY LIN INTERNATIONAL
 engineers | planners | scientists
 500 4th Street NW Suite 403
 Bank of America Centre
 Albuquerque, NM 87102

CITY OF ALBUQUERQUE
 MUNICIPAL DEVELOPMENT DEPARTMENT
 ENGINEERING DIVISION

TITLE: **UNIVERSITY BLVD BIKEWAYS - PHASE 2**
 SIGNING & STRIPING
 STA 10+00 TO 25+00

Design Review Committee	City Engineer Approval	Mo./Day/Yr.	Mo./Day/Yr.
City Project No.	Zone Map No.	Sheet	Of
7956.92 (A300111)	L15, M15	40	140

SEE SHEET 15
FOR TRAIL
CONNECTION



REMOVALS		DATE
1	REMOVE & RELOCATE EXISTING GATE, SEE SHEET 15	1 EA

GENERAL CONSTRUCTION NOTES		DATE
1	PROTECT IN PLACE	
2	INSTALL NEW RETRACTABLE BOLLARD PER DETAIL ON SHEET 47	4 EA
3	INSTALL A SHARED LANE MARKING PER DETAIL ON SHEET 33	5 EA
8	INSTALL NEW SIGN W/ NEW SIGN POST PER DETAIL ON SHEET 34 & 35	

AS BUILT INFORMATION		CONTRACTOR	DATE
WORK			
STAKED BY			
INSPECTOR'S DATE			
FIELD CHANGE BY			
VERIFICATION BY			
APPROVED BY			
CORRECTED BY			
MICRO-FILM INFORMATION			
RECORDED BY			
NO.			

SURVEY INFORMATION		FIELD NOTES	DATE
NO.			
BY			

SIGNING LEGEND:

SPEED LIMIT 30 NEW/REMOVE & RELOCATED SIGN 18 EA

SPEED LIMIT 30 REMOVE & SALVAGE

SPEED LIMIT 30 PROTECT IN PLACE

TOTAL NEW SIGN: 44.5 SF
TOTAL NEW SIGN POST: 98.5 LF

260-1990

NO.	DATE	REMARKS	BY
		DESIGN	
		REVISIONS	

DESIGNED BY: B.LONG	DATE: 09/2016
DRAWN BY: B.LONG	DATE: 09/2016
CHECKED BY: E.FROBERG	DATE: 09/2016

TY LIN INTERNATIONAL
engineers | planners | scientists
500 4th Street NW Suite 403
Bank of America Centre
Albuquerque, NM 87102

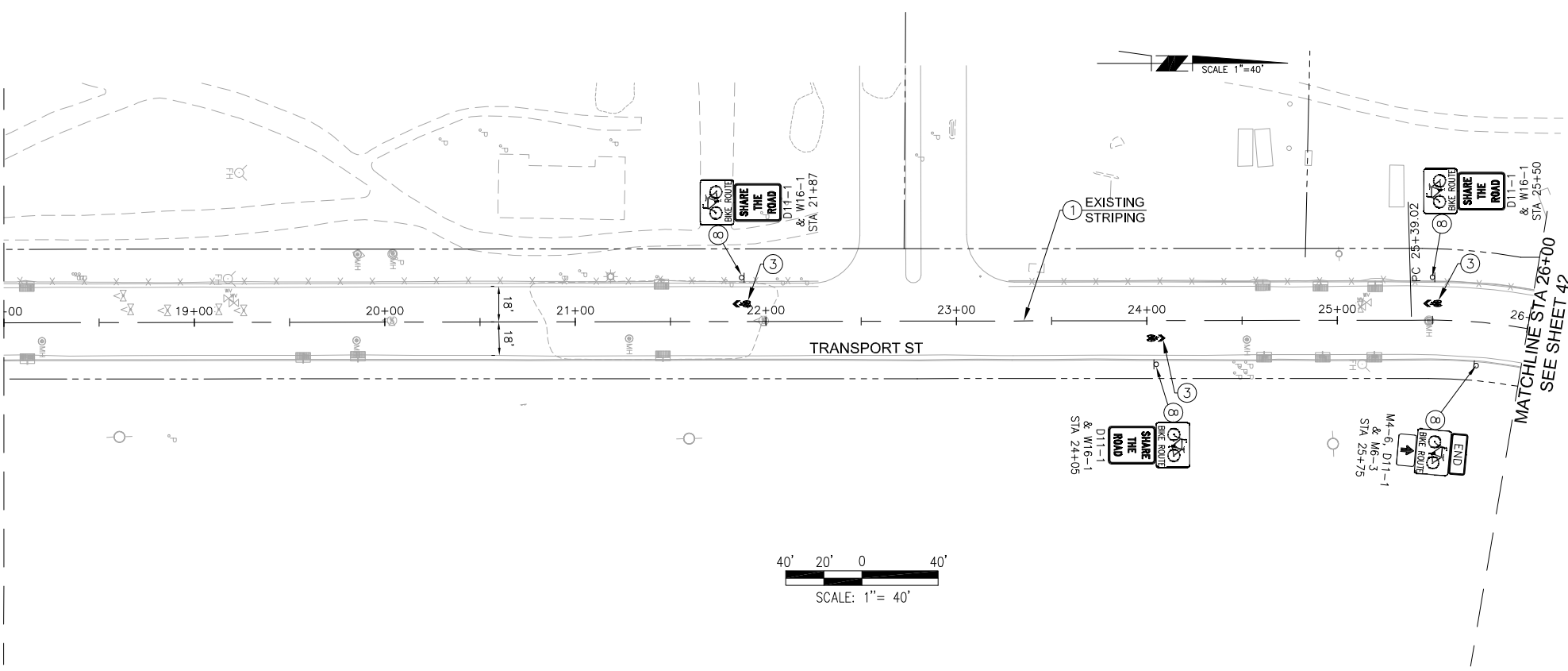
CITY OF ALBUQUERQUE
MUNICIPAL DEVELOPMENT DEPARTMENT
ENGINEERING DIVISION

TITLE: **UNIVERSITY BLVD BIKEWAYS - PHASE 2**
SIGNING & STRIPING
STA 10+00 TO 26+00

Design Review Committee	City Engineer Approval	Mo./Day/Yr.	Mo./Day/Yr.

City Project No. 7956.92 (A300111) Zone Map No. L15, M15 Sheet 41 Of 140

MATCHLINE STA 18+00
SEE THIS SHEET



MATCHLINE STA 26+00
SEE SHEET 42

