



DEVELOPMENT REVIEW BOARD  
SUPPLEMENTAL SUBMITTAL

(Deadline is Friday at noon unless noted on DRB calendar – late submittals will not be accepted unless approved by the DRB)

PROJECT NO. PR 2019.002651  
Application No. SD 2022.00094

TO:

- Planning Department/Chair
- Hydrology
- Transportation Development
- ABCWUA
- Code Enforcement
- Parks & Rec

\*(Please attach this sheet with each collated set for each board member)

**NOTE: ELECTRONIC VERSION (ie disk, thumbdrive) is Required. Submittal will not be accepted without.**

DRB SCHEDULED HEARING DATE: \_\_\_\_\_ HEARING DATE OF DEFERRAL: 6.29.2022

SUBMITTAL  
DESCRIPTION: \_\_\_\_\_

1) ADD 'GRANTED TO WATER AUTHORITY' FOR PROPOSED PUBLIC SANITARY

SEWER EASEMENT AT NW CORNER OF SUBJECT PROPERTY

2) REMOVE 'TO BE VACATED BY THIS PLAT' FOR RAPID RAIL TRANSIT LINE EASEMENT

CONTACT NAME: DERRICK ARCHULETA

TELEPHONE: 505.980.8365 EMAIL: arch.plan@comcast.net

# PLAT OF PARCELS 2A1 AND 2A2 SUNPORT PARK SUBDIVISION (REPLAT OF PARCEL 2A, SUNPORT PARK) SECTION 33, T. 10N., R. 3E., N.M.P.M.

ALBUQUERQUE, BERNALILLO COUNTY, NEW MEXICO  
JUNE 2022



SCALE: 1" = 100'  
0 50 100

CONTROL POINT 7, 4M4\*  
NM STATE PLANE COORDINATE SYSTEM CENTRAL ZONE  
NAD 83  
ELEV = 4,845.9 NAVD 1988 (US SURVEY FEET)  
ELEV = 4,521.388 803 MAD 83 (US SURVEY FEET)  
GCS = NAD 83  
GEOID = 1.527 (US SURVEY FEET)  
GEOID FACTOR = 0.999977038  
GEOID ANGLE = -0.132138"

INTERSTATE 25  
(500 ORIGINAL D.M.W.)  
20 GAS LINE EASMT.  
(DOC: 2011110902)  
1,223.65' (7E)  
N 08°19'07" E, 1,101.11'

PARCEL 2A1  
SUNPORT PARK  
GROSS: 2,074,480.00 FT. ±, 45,589 ACRES  
NET: 1,974,480.00 FT. ±, 43,589 ACRES

PARCEL 2A2  
SUNPORT PARK  
GROSS & NET: 40,000.00 FT. ±, 1.000 ACRES

PARCEL 2A2  
(HOTEL PARCEL)  
SUNPORT PARK  
GROSS & NET: 40,000.00 FT. ±, 1.000 ACRES

PARCEL 2A1  
SUNPORT PARK  
GROSS & NET: 2,074,480.00 FT. ±, 45,589 ACRES

PARCEL 2A1  
SUNPORT PARK  
GROSS & NET: 2,074,480.00 FT. ±, 45,589 ACRES

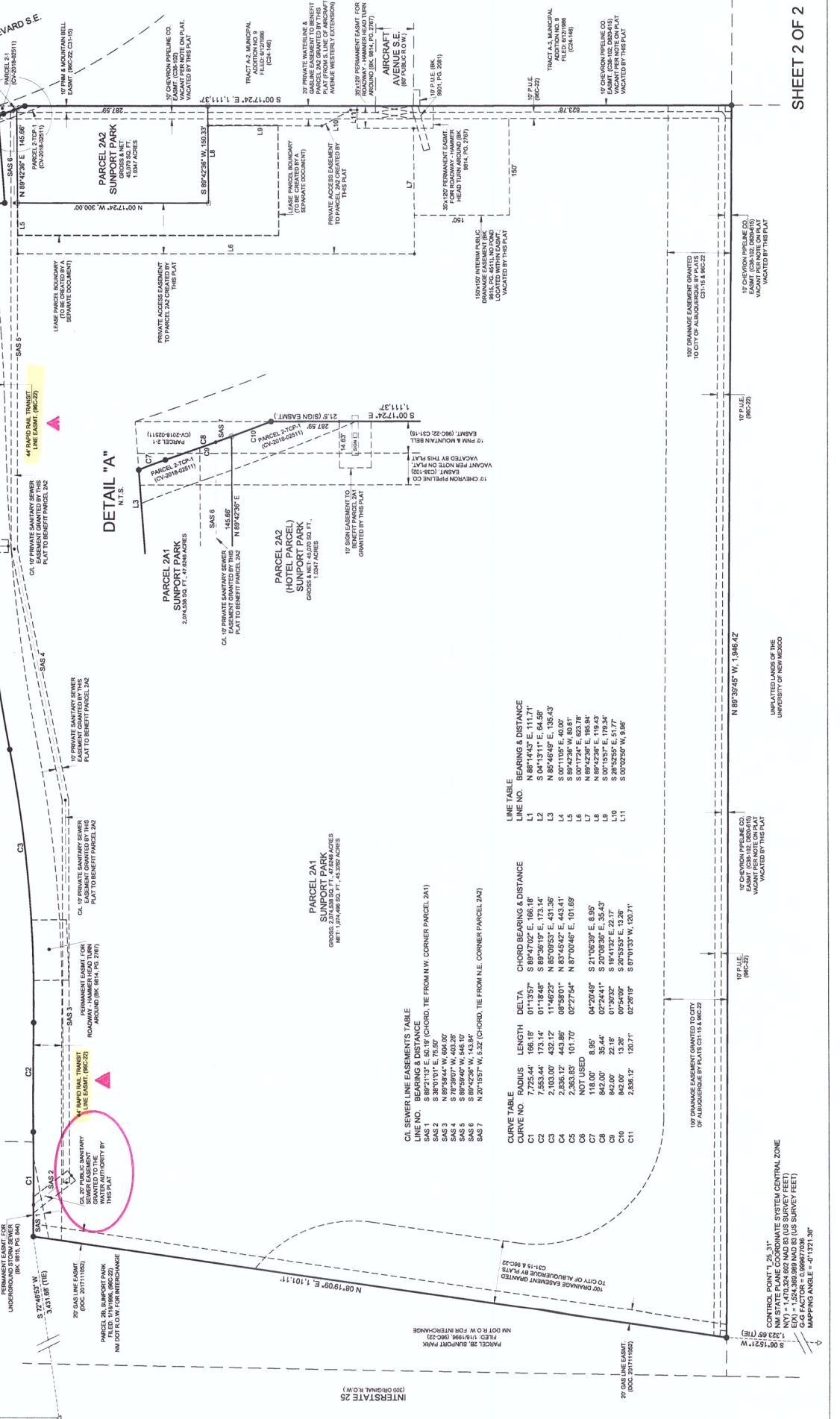
PARCEL 2A1  
SUNPORT PARK  
GROSS & NET: 2,074,480.00 FT. ±, 45,589 ACRES

PARCEL 2A1  
SUNPORT PARK  
GROSS & NET: 2,074,480.00 FT. ±, 45,589 ACRES

PARCEL 2A1  
SUNPORT PARK  
GROSS & NET: 2,074,480.00 FT. ±, 45,589 ACRES

PARCEL 2A1  
SUNPORT PARK  
GROSS & NET: 2,074,480.00 FT. ±, 45,589 ACRES

PARCEL 2A1  
SUNPORT PARK  
GROSS & NET: 2,074,480.00 FT. ±, 45,589 ACRES



### LINE TABLE

LINE NO.	BEARING & DISTANCE
L1	N 88°14'52" E, 111.71'
L2	S 04°13'11" E, 64.58'
L3	N 85°46'45" E, 135.43'
L4	S 00°11'05" E, 40.00'
L5	S 89°42'36" W, 80.91'
L6	N 89°42'36" E, 195.94'
L7	N 89°42'36" E, 119.43'
L8	S 08°15'55" E, 179.34'
L9	S 00°02'50" W, 9.96'

### CURVE TABLE

CURVE NO.	RADIUS	LENGTH	DELTA	CHORD BEARING & DISTANCE
C1	7,726.54'	168.18'	01°11'57"	S 89°42'02" E, 168.18'
C2	7,553.44'	173.14'	01°18'48"	S 89°36'19" E, 173.14'
C3	2,103.00'	432.12'	11°46'23"	N 85°09'53" E, 431.35'
C4	2,836.12'	443.86'	08°58'01"	N 83°45'42" E, 443.41'
C5	2,353.83'	101.70'	02°27'54"	N 87°00'46" E, 101.69'
C6	NOT USED			
C7	118.00'	8.95'	64°29'49"	S 21°03'09" E, 8.95'
C8	842.00'	35.44'	02°24'41"	S 20°08'36" E, 35.43'
C9	842.00'	22.18'	01°30'32"	S 19°43'32" E, 22.17'
C10	842.00'	13.26'	00°54'00"	S 20°53'53" E, 13.26'
C11	2,836.12'	120.71'	02°29'19"	S 87°01'33" W, 120.71'

### LINE TABLE

LINE NO.	BEARING & DISTANCE
L1	N 88°14'52" E, 111.71'
L2	S 04°13'11" E, 64.58'
L3	N 85°46'45" E, 135.43'
L4	S 00°11'05" E, 40.00'
L5	S 89°42'36" W, 80.91'
L6	N 89°42'36" E, 195.94'
L7	N 89°42'36" E, 119.43'
L8	S 08°15'55" E, 179.34'
L9	S 00°02'50" W, 9.96'

### LINE TABLE

LINE NO.	BEARING & DISTANCE
L1	N 88°14'52" E, 111.71'
L2	S 04°13'11" E, 64.58'
L3	N 85°46'45" E, 135.43'
L4	S 00°11'05" E, 40.00'
L5	S 89°42'36" W, 80.91'
L6	N 89°42'36" E, 195.94'
L7	N 89°42'36" E, 119.43'
L8	S 08°15'55" E, 179.34'
L9	S 00°02'50" W, 9.96'

### LINE TABLE

LINE NO.	BEARING & DISTANCE
L1	N 88°14'52" E, 111.71'
L2	S 04°13'11" E, 64.58'
L3	N 85°46'45" E, 135.43'
L4	S 00°11'05" E, 40.00'
L5	S 89°42'36" W, 80.91'
L6	N 89°42'36" E, 195.94'
L7	N 89°42'36" E, 119.43'
L8	S 08°15'55" E, 179.34'
L9	S 00°02'50" W, 9.96'

CONTROL POINT 7, 26, 31\*  
NM STATE PLANE COORDINATE SYSTEM CENTRAL ZONE  
NAD 83  
ELEV = 4,845.9 NAVD 1988 (US SURVEY FEET)  
ELEV = 4,521.388 803 MAD 83 (US SURVEY FEET)  
GCS = NAD 83  
GEOID = 1.527 (US SURVEY FEET)  
GEOID FACTOR = 0.999977038  
GEOID ANGLE = -0.132138"

INTERSTATE 25  
(500 ORIGINAL D.M.W.)  
20 GAS LINE EASMT.  
(DOC: 2011110902)  
1,223.65' (7E)  
N 08°19'07" E, 1,101.11'

PARCEL 2A1  
SUNPORT PARK  
GROSS: 2,074,480.00 FT. ±, 45,589 ACRES  
NET: 1,974,480.00 FT. ±, 43,589 ACRES

PARCEL 2A2  
SUNPORT PARK  
GROSS & NET: 40,000.00 FT. ±, 1.000 ACRES

PARCEL 2A2  
(HOTEL PARCEL)  
SUNPORT PARK  
GROSS & NET: 40,000.00 FT. ±, 1.000 ACRES

PARCEL 2A1  
SUNPORT PARK  
GROSS & NET: 2,074,480.00 FT. ±, 45,589 ACRES

PARCEL 2A1  
SUNPORT PARK  
GROSS & NET: 2,074,480.00 FT. ±, 45,589 ACRES

PARCEL 2A1  
SUNPORT PARK  
GROSS & NET: 2,074,480.00 FT. ±, 45,589 ACRES

PARCEL 2A1  
SUNPORT PARK  
GROSS & NET: 2,074,480.00 FT. ±, 45,589 ACRES

PARCEL 2A1  
SUNPORT PARK  
GROSS & NET: 2,074,480.00 FT. ±, 45,589 ACRES

PARCEL 2A1  
SUNPORT PARK  
GROSS & NET: 2,074,480.00 FT. ±, 45,589 ACRES

PARCEL 2A1  
SUNPORT PARK  
GROSS & NET: 2,074,480.00 FT. ±, 45,589 ACRES