

# ADMINISTRATIVE AMENDMENT

FILE #: \_\_\_\_\_ PROJECT #: \_\_\_\_\_

---

---

---

---

---

\_\_\_\_\_  
**APPROVED BY**

\_\_\_\_\_  
**DATE**



TERMINES

WEST ELEVATION AREA  
 = 52' x 240' = 12,480 SQ FEET

APPX 240'

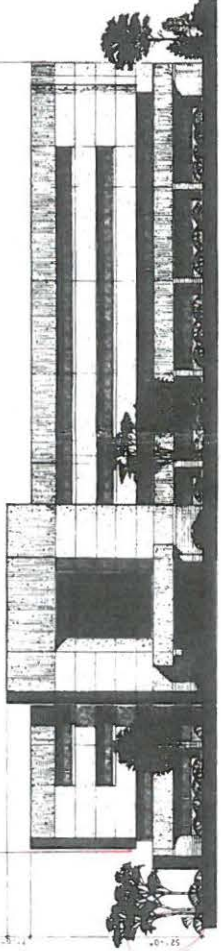
THE SIGNS EQUAL  
 1.635% OF TOTAL AREA

General Information

1. SITE NO. 10000
2. PROJECT NAME - OFFICE BUILDING
3. ADDRESS - 10000
4. CITY - NEW YORK
5. COUNTY - WESTCHESTER - TRACT 8-44, UNIT FIVE, AVENUE AREA SUB

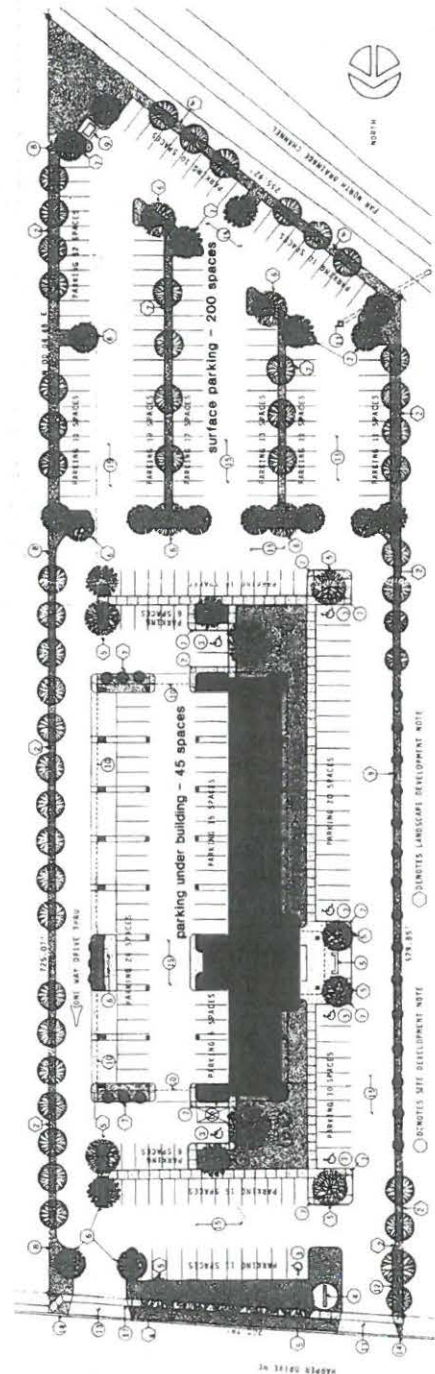
Site Development Plan Notes

1. PERMITTED DEVELOPMENT - MILL CREEK S.D. No. 200
2. SHEET NUMBER - 10000-001
3. TOTAL SHEETS - 03
4. SHEET TITLE - OFFICE BUILDING
5. SHEET NO. - 10000-001
6. SHEET DATE - 11/12/11
7. SHEET SCALE - 1" = 30'-0"
8. SHEET AREA - 12,480 SQ FT
9. SHEET PERCENTAGE - 1.635%
10. SHEET TOTAL AREA - 763,200 SQ FT
11. SHEET TOTAL PERCENTAGE - 100%
12. SHEET TOTAL SHEETS - 46
13. SHEET TOTAL AREA - 763,200 SQ FT
14. SHEET TOTAL PERCENTAGE - 100%
15. SHEET TOTAL SHEETS - 46
16. SHEET TOTAL AREA - 763,200 SQ FT
17. SHEET TOTAL PERCENTAGE - 100%
18. SHEET TOTAL SHEETS - 46
19. SHEET TOTAL AREA - 763,200 SQ FT
20. SHEET TOTAL PERCENTAGE - 100%
21. SHEET TOTAL SHEETS - 46
22. SHEET TOTAL AREA - 763,200 SQ FT
23. SHEET TOTAL PERCENTAGE - 100%
24. SHEET TOTAL SHEETS - 46
25. SHEET TOTAL AREA - 763,200 SQ FT
26. SHEET TOTAL PERCENTAGE - 100%
27. SHEET TOTAL SHEETS - 46
28. SHEET TOTAL AREA - 763,200 SQ FT
29. SHEET TOTAL PERCENTAGE - 100%
30. SHEET TOTAL SHEETS - 46
31. SHEET TOTAL AREA - 763,200 SQ FT
32. SHEET TOTAL PERCENTAGE - 100%
33. SHEET TOTAL SHEETS - 46
34. SHEET TOTAL AREA - 763,200 SQ FT
35. SHEET TOTAL PERCENTAGE - 100%
36. SHEET TOTAL SHEETS - 46
37. SHEET TOTAL AREA - 763,200 SQ FT
38. SHEET TOTAL PERCENTAGE - 100%
39. SHEET TOTAL SHEETS - 46
40. SHEET TOTAL AREA - 763,200 SQ FT
41. SHEET TOTAL PERCENTAGE - 100%
42. SHEET TOTAL SHEETS - 46
43. SHEET TOTAL AREA - 763,200 SQ FT
44. SHEET TOTAL PERCENTAGE - 100%
45. SHEET TOTAL SHEETS - 46
46. SHEET TOTAL AREA - 763,200 SQ FT
47. SHEET TOTAL PERCENTAGE - 100%
48. SHEET TOTAL SHEETS - 46
49. SHEET TOTAL AREA - 763,200 SQ FT
50. SHEET TOTAL PERCENTAGE - 100%



ELEVATION

SCALE 1" = 10'-0"



SITE PLAN

SCALE 1" = 30'-0"

Landscaping Plan Notes

1. LAND UTILIZATION & COVERAGE
2. TOTAL SITE AREA - 763,200 SQ FT
3. TOTAL SITE PERCENTAGE - 100%
4. TOTAL SITE SHEETS - 46
5. TOTAL SITE AREA - 763,200 SQ FT
6. TOTAL SITE PERCENTAGE - 100%
7. TOTAL SITE SHEETS - 46
8. TOTAL SITE AREA - 763,200 SQ FT
9. TOTAL SITE PERCENTAGE - 100%
10. TOTAL SITE SHEETS - 46
11. TOTAL SITE AREA - 763,200 SQ FT
12. TOTAL SITE PERCENTAGE - 100%
13. TOTAL SITE SHEETS - 46
14. TOTAL SITE AREA - 763,200 SQ FT
15. TOTAL SITE PERCENTAGE - 100%
16. TOTAL SITE SHEETS - 46
17. TOTAL SITE AREA - 763,200 SQ FT
18. TOTAL SITE PERCENTAGE - 100%
19. TOTAL SITE SHEETS - 46
20. TOTAL SITE AREA - 763,200 SQ FT
21. TOTAL SITE PERCENTAGE - 100%
22. TOTAL SITE SHEETS - 46
23. TOTAL SITE AREA - 763,200 SQ FT
24. TOTAL SITE PERCENTAGE - 100%
25. TOTAL SITE SHEETS - 46
26. TOTAL SITE AREA - 763,200 SQ FT
27. TOTAL SITE PERCENTAGE - 100%
28. TOTAL SITE SHEETS - 46
29. TOTAL SITE AREA - 763,200 SQ FT
30. TOTAL SITE PERCENTAGE - 100%
31. TOTAL SITE SHEETS - 46
32. TOTAL SITE AREA - 763,200 SQ FT
33. TOTAL SITE PERCENTAGE - 100%
34. TOTAL SITE SHEETS - 46
35. TOTAL SITE AREA - 763,200 SQ FT
36. TOTAL SITE PERCENTAGE - 100%
37. TOTAL SITE SHEETS - 46
38. TOTAL SITE AREA - 763,200 SQ FT
39. TOTAL SITE PERCENTAGE - 100%
40. TOTAL SITE SHEETS - 46
41. TOTAL SITE AREA - 763,200 SQ FT
42. TOTAL SITE PERCENTAGE - 100%
43. TOTAL SITE SHEETS - 46
44. TOTAL SITE AREA - 763,200 SQ FT
45. TOTAL SITE PERCENTAGE - 100%
46. TOTAL SITE SHEETS - 46
47. TOTAL SITE AREA - 763,200 SQ FT
48. TOTAL SITE PERCENTAGE - 100%
49. TOTAL SITE SHEETS - 46
50. TOTAL SITE AREA - 763,200 SQ FT

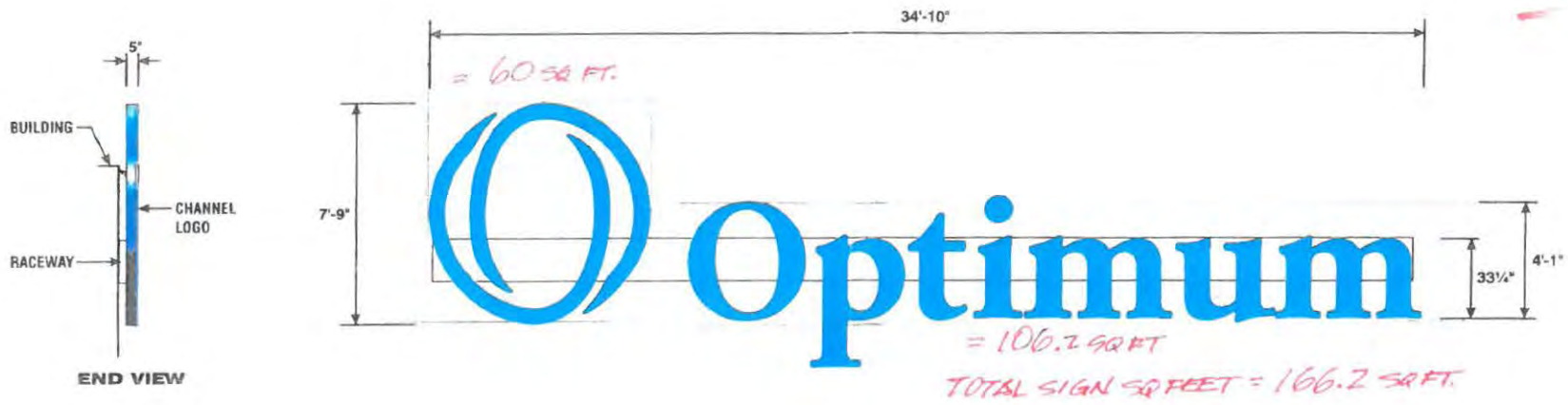
Signature Block

APPROVED AS TO REQUIREMENTS:  
 [Signature] 11/12/11  
 [Signature] 11/12/11  
 [Signature] 11/12/11

A 1305



*PERMITS*

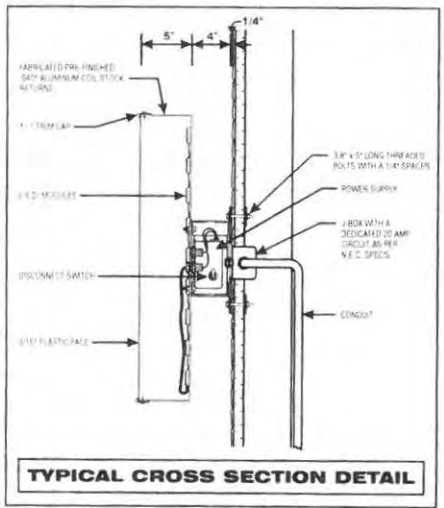


END VIEW

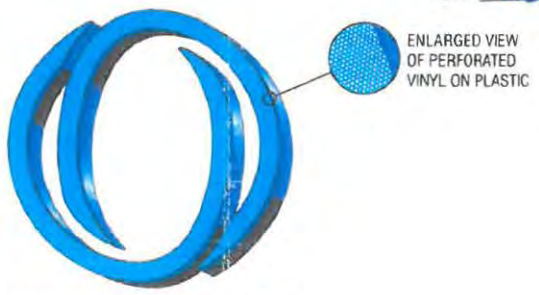
**ILLUMINATED CHANNEL LETTERS AND LOGO**

- PERFORMED VINYL PAINTED OPTIMUM BLUE APPLIED FIRST SURFACE ON WHITE ACRYLIC FACES WITH 1" DARK BLUE TRIM CAP
- 5" DEEP, PRE-FINISHED HERON BLUE ALUMINUM RETURNS
- INTERNALLY ILLUMINATED WITH WHITE L.E.D. MODULES
- CHANNEL NUMERALS MOUNTED ON A 3"x3" ALUMINUM RACEWAY PAINTED TO MATCH BUILDING

Building Fascia: 12480  
Sign: 166.2  
Ratio: 1.6



TYPICAL CROSS SECTION DETAIL



PERSPECTIVE VIEW



SIGN LOCATION  
*West Elevation*

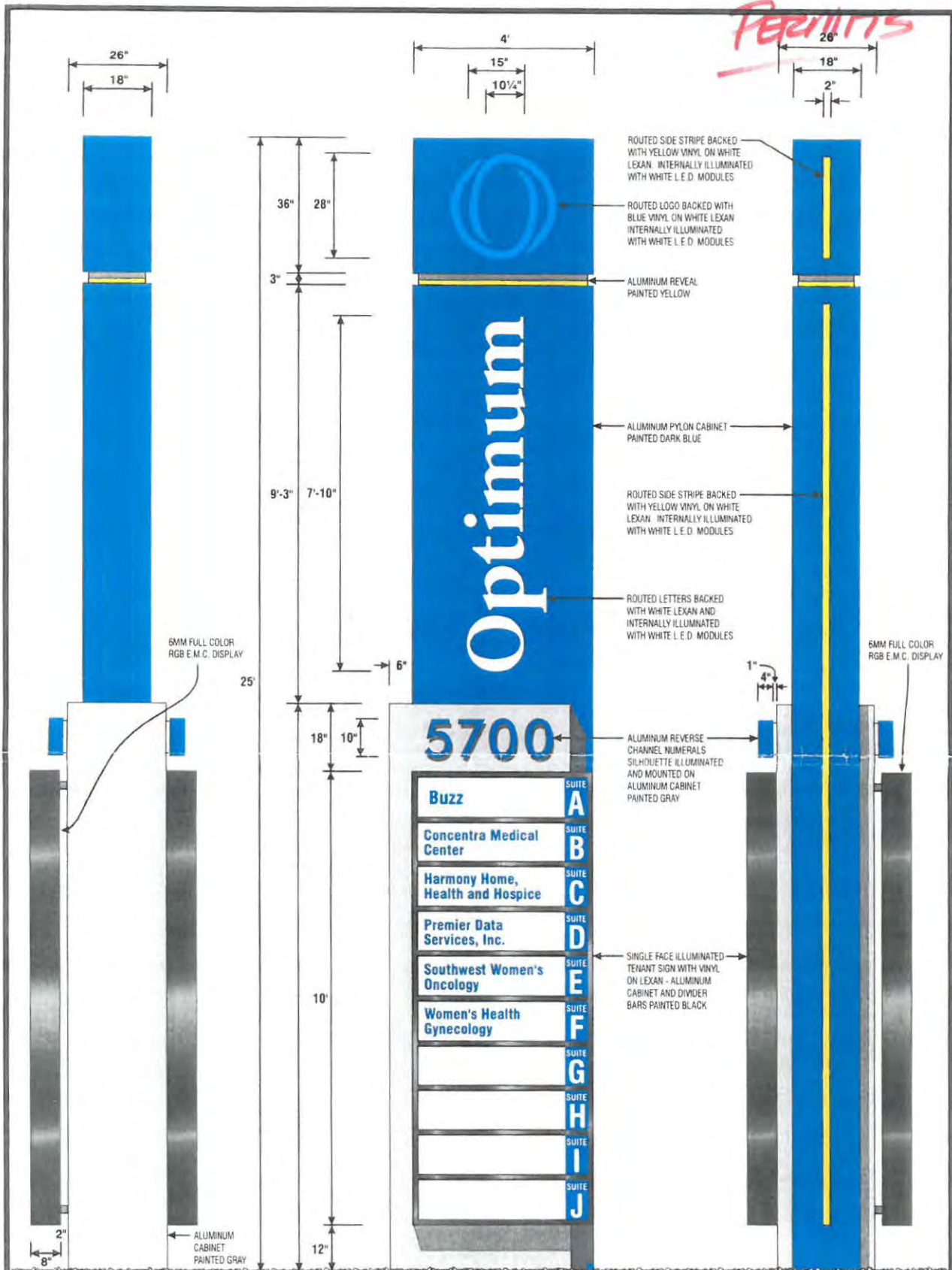
**ZEON signs**  
EPNM, INC.  
ELECTRICAL PRODUCTS COMPANY  
2018 5th St. NW, Albuquerque, NM 87102  
505) 243-3771 Toll Free 800-444-7401  
Fax: 505) 243-3375

THIS DESIGN IS THE EXCLUSIVE PROPERTY OF EPNM, INC. AND CANNOT BE REPRODUCED EITHER IN WHOLE OR IN PART WITHOUT THEIR WRITTEN CONSENT.

PIPE SIZE(S) AND/OR SPLICES MAY CHANGE THE ARTIST CONCEPT DEPENDING ON ENGINEERING CALCULATIONS FOR FINAL INSTALLATION.

ACTUAL SIZE OF SIGN AND COPY FROM SCALED DRAWING MAY VARY. COLOR OF THIS FREE SAMPLE DOES NOT REPRESENT THE EXACT MATERIAL COLOR SPECIFIED. SEE QUANTITY FOR EXACT APPEARANCE OF COLOR SPECIFIED.

TITLE: OPTIMUM	DRWG NO: 820 - 242	APPROVED FOR PRODUCTION:	REVISIONS
SCALE: 1/4" = 1'-0"	CUSTOMER APPROVAL:	8-31-20	
SALES: CURTIS MOTT			
DESIGN BY: R. GONZALES			



*Permits*

**SOUTH ELEVATION**

**NORTH ELEVATION (STREET SIDE)**

**EAST ELEVATION**

**DOUBLE FACE ILLUMINATED FREE-STANDING DISPLAY**

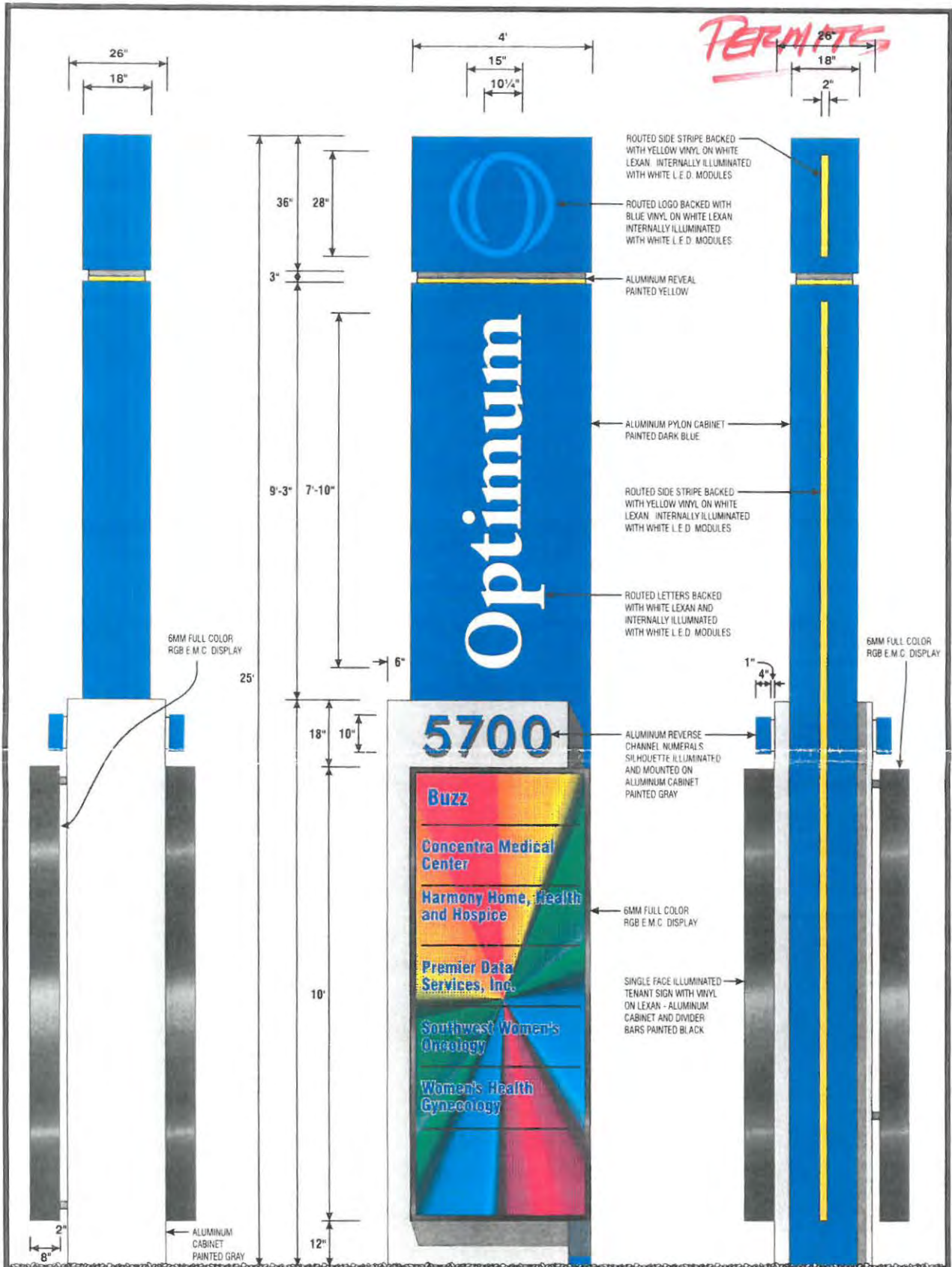
<b>REVISED</b>
8-31-20
5-25-21

**ZEON signs**  
**AL-2E305**  
**EPNM, INC.**  
 ELECTRICAL PRODUCTS COMPANY  
 2024 5TH ST. NW Albuquerque, NM 87102  
 (505) 245-5775 Toll Free: 800-444-7407  
 Fax: (505) 245-5575

Copyright © 2020 EPNM, Inc. All rights reserved. This drawing is the property of EPNM, Inc. and is not to be reproduced, stored in a retrieval system, or transmitted in any form or by any means, electronic, mechanical, photocopying, recording, or by any information storage and retrieval system, without the prior written permission of EPNM, Inc. EPNM, Inc. is not responsible for any errors or omissions in this drawing. EPNM, Inc. is not responsible for any damage or injury resulting from the use of this drawing. EPNM, Inc. is not responsible for any liability resulting from the use of this drawing. EPNM, Inc. is not responsible for any loss of profit or business resulting from the use of this drawing. EPNM, Inc. is not responsible for any loss of data or information resulting from the use of this drawing. EPNM, Inc. is not responsible for any loss of time or resources resulting from the use of this drawing. EPNM, Inc. is not responsible for any loss of reputation resulting from the use of this drawing. EPNM, Inc. is not responsible for any loss of goodwill resulting from the use of this drawing. EPNM, Inc. is not responsible for any loss of market share resulting from the use of this drawing. EPNM, Inc. is not responsible for any loss of competitive advantage resulting from the use of this drawing. EPNM, Inc. is not responsible for any loss of intellectual property resulting from the use of this drawing. EPNM, Inc. is not responsible for any loss of trade secrets resulting from the use of this drawing. EPNM, Inc. is not responsible for any loss of confidential information resulting from the use of this drawing. EPNM, Inc. is not responsible for any loss of proprietary information resulting from the use of this drawing. EPNM, Inc. is not responsible for any loss of trade names resulting from the use of this drawing. EPNM, Inc. is not responsible for any loss of trademarks resulting from the use of this drawing. EPNM, Inc. is not responsible for any loss of patents resulting from the use of this drawing. EPNM, Inc. is not responsible for any loss of copyrights resulting from the use of this drawing. EPNM, Inc. is not responsible for any loss of other intellectual property rights resulting from the use of this drawing. EPNM, Inc. is not responsible for any loss of other legal rights resulting from the use of this drawing. EPNM, Inc. is not responsible for any loss of other legal interests resulting from the use of this drawing. EPNM, Inc. is not responsible for any loss of other legal obligations resulting from the use of this drawing. EPNM, Inc. is not responsible for any loss of other legal duties resulting from the use of this drawing. EPNM, Inc. is not responsible for any loss of other legal responsibilities resulting from the use of this drawing. EPNM, Inc. is not responsible for any loss of other legal liabilities resulting from the use of this drawing. EPNM, Inc. is not responsible for any loss of other legal claims resulting from the use of this drawing. EPNM, Inc. is not responsible for any loss of other legal defenses resulting from the use of this drawing. EPNM, Inc. is not responsible for any loss of other legal remedies resulting from the use of this drawing. EPNM, Inc. is not responsible for any loss of other legal consequences resulting from the use of this drawing. EPNM, Inc. is not responsible for any loss of other legal outcomes resulting from the use of this drawing. EPNM, Inc. is not responsible for any loss of other legal results resulting from the use of this drawing. EPNM, Inc. is not responsible for any loss of other legal effects resulting from the use of this drawing. EPNM, Inc. is not responsible for any loss of other legal impacts resulting from the use of this drawing. EPNM, Inc. is not responsible for any loss of other legal consequences resulting from the use of this drawing. EPNM, Inc. is not responsible for any loss of other legal outcomes resulting from the use of this drawing. EPNM, Inc. is not responsible for any loss of other legal effects resulting from the use of this drawing. EPNM, Inc. is not responsible for any loss of other legal impacts resulting from the use of this drawing.

<b>TITLE: OPTIMUM</b>	<b>DRWG NO: 820 - 251</b>	<b>APPROVED FOR PRODUCTION:</b>
<b>SCALE: 1/2" = 1'-0"</b>	<b>CUSTOMER APPROVAL:</b>	
<b>SALES: CURTIS MOTT</b>		
<b>DESIGNER: R. GONZALES</b>		





SOUTH ELEVATION

NORTH ELEVATION (STREET SIDE)

WEST ELEVATION (STREET SIDE)

DOUBLE FACE ILLUMINATED FREE-STANDING DISPLAY

= 100 STREET

<b>REVISED</b>
8-31-20
5-25-21

**ZEON signs**  
**AL-AT30**  
**EPNM, INC.**  
 ELECTRICAL PRODUCTS COMPANY  
 2024 5th St. NW Albuquerque, NM 87102  
 (505) 245-3771 Toll Free: 800-466-7427  
 Fax: (505) 245-3575

Copyright © 2020, The Linda S. Mott Company, Inc. All rights reserved. This drawing is the property of The Linda S. Mott Company, Inc. and is not to be reproduced, stored in a retrieval system, or transmitted in any form or by any means, electronic, mechanical, photocopying, recording, or by any information storage and retrieval system, without the prior written permission of The Linda S. Mott Company, Inc. All other rights reserved.

<b>TITLE: OPTIMUM</b>	<b>APPROVED FOR PRODUCTION:</b>
<b>SCALE: 1/2" = 1'- 0"</b>	<b>CUSTOMER APPROVAL:</b>
<b>SALES: CURTIS MOTT</b>	
<b>DESIGN BY: R. GONZALES</b>	