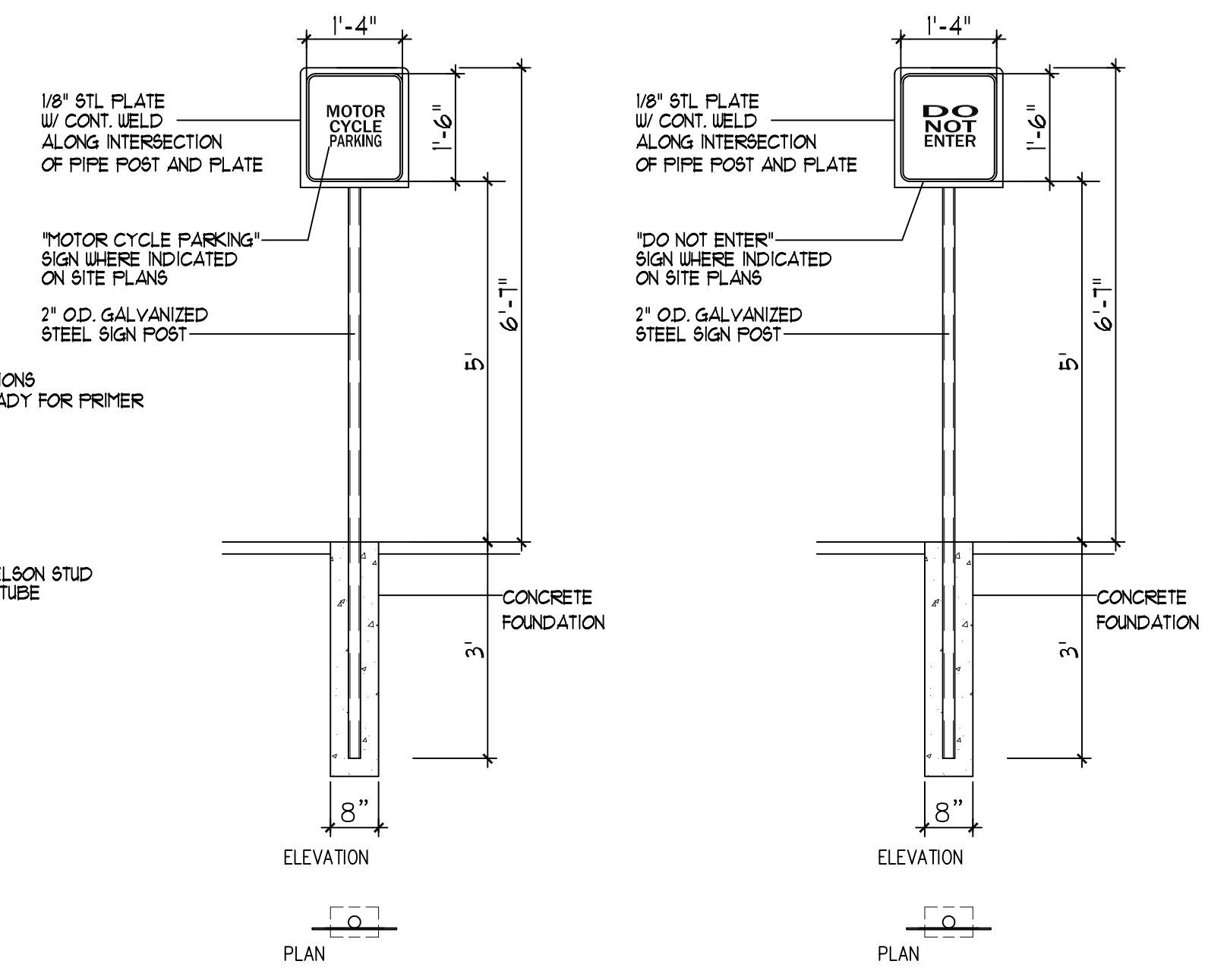
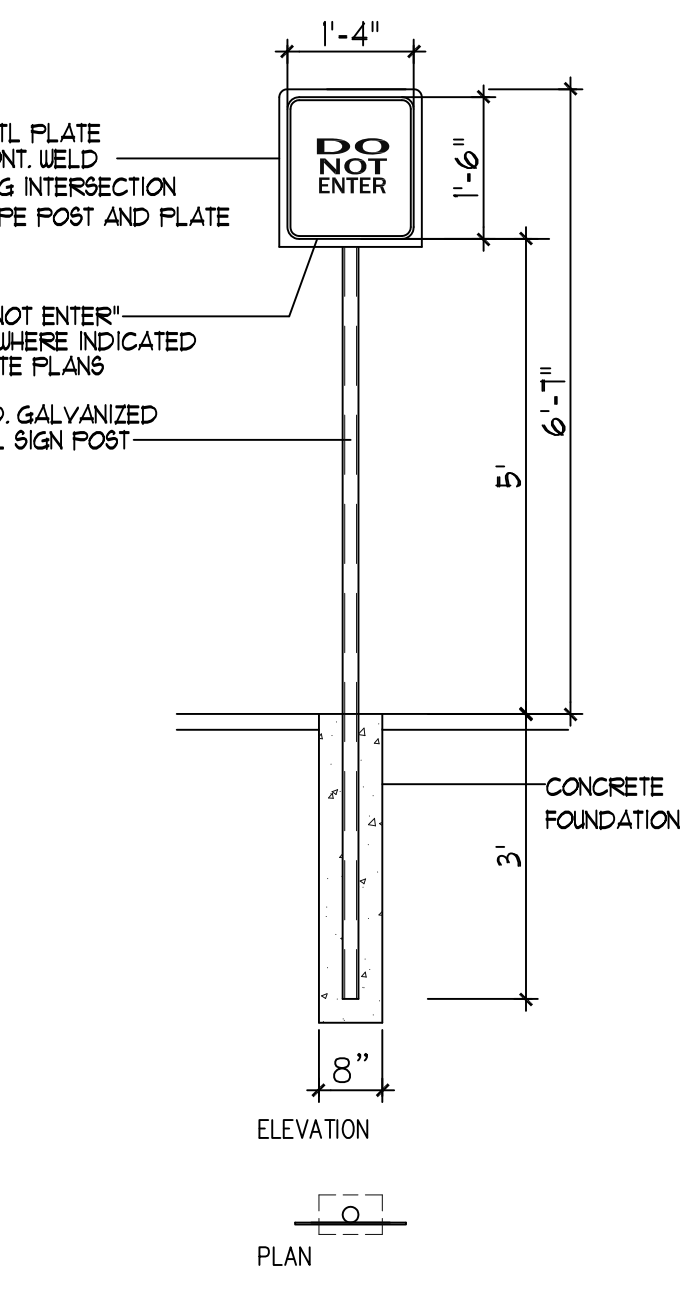


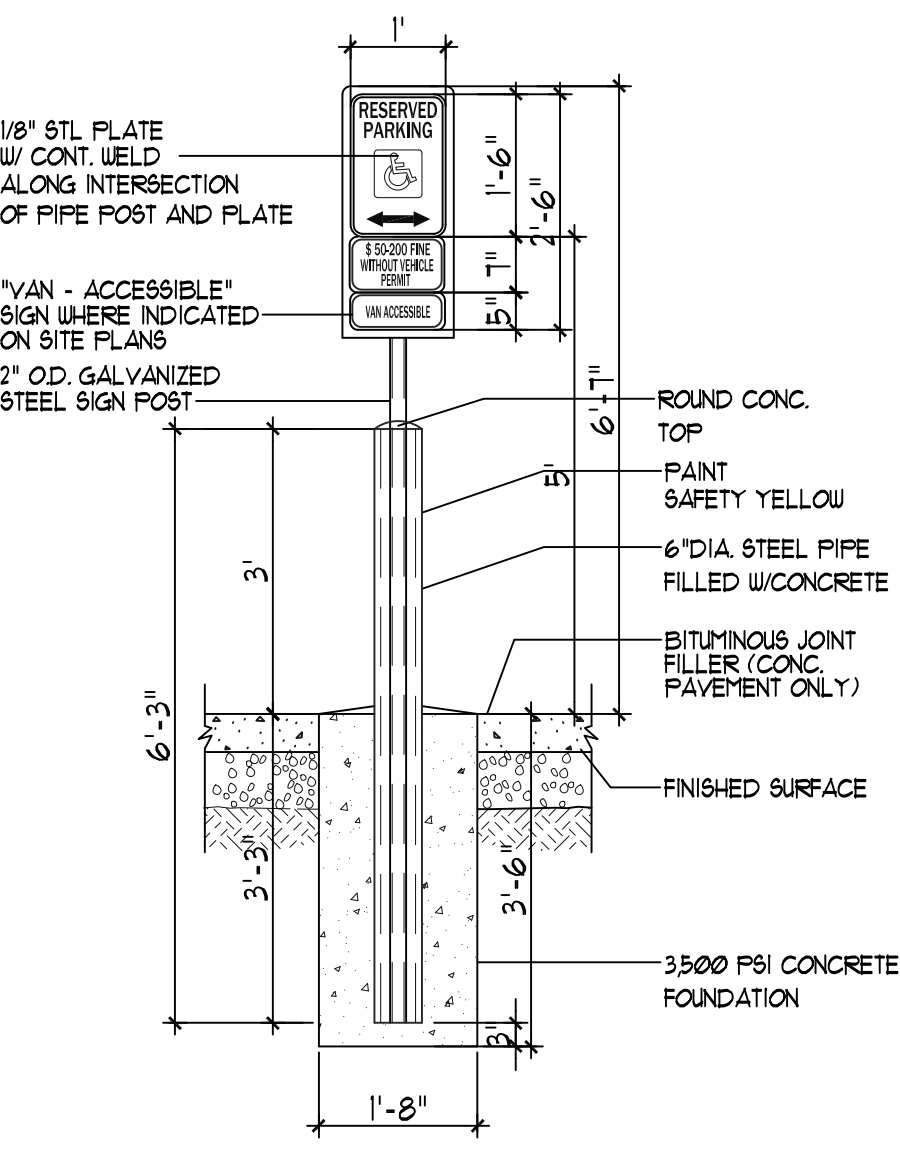
13 BIKE RACK  
NT.S



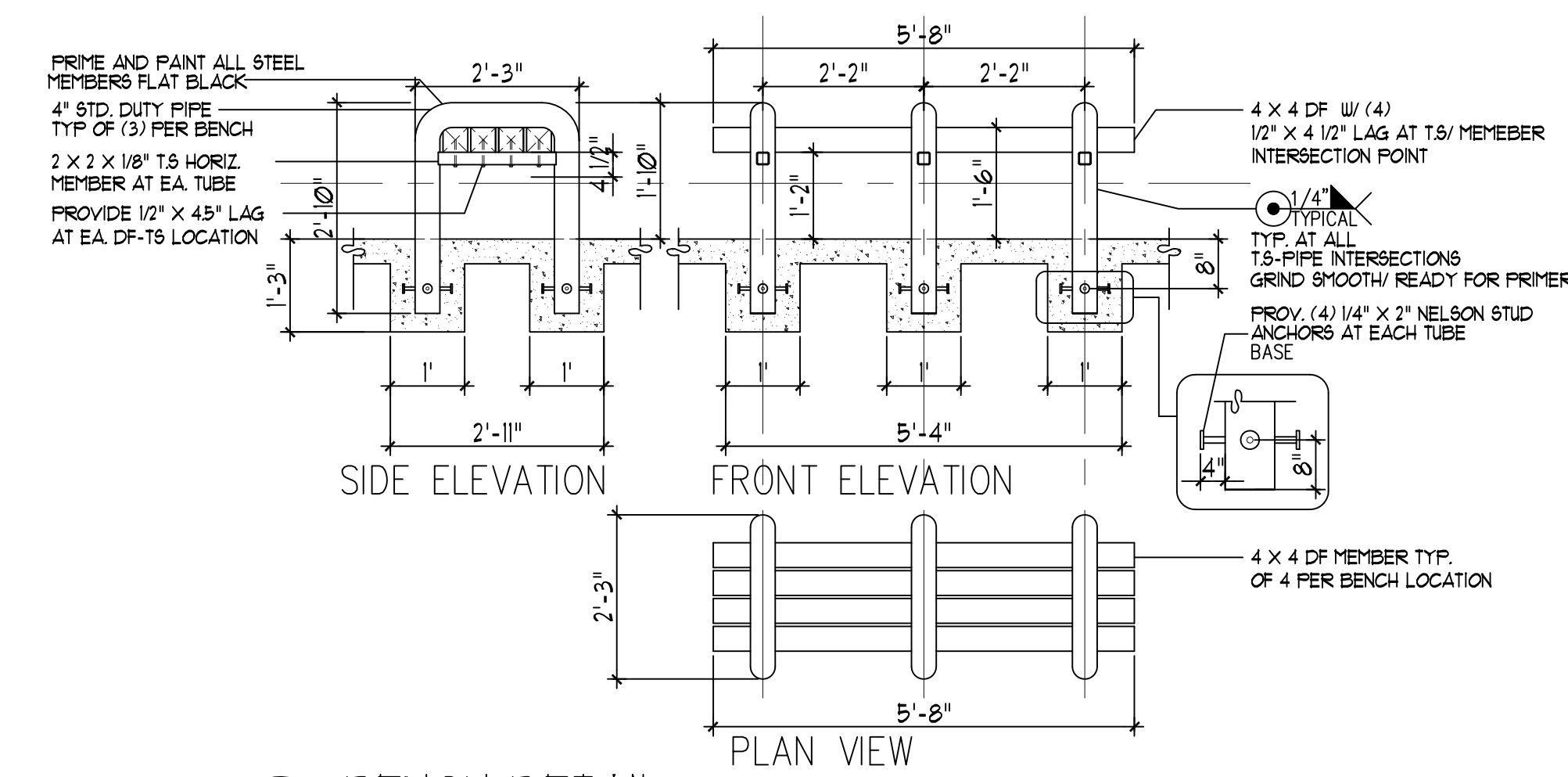
12 MISC. SIGNAGE  
NT.S



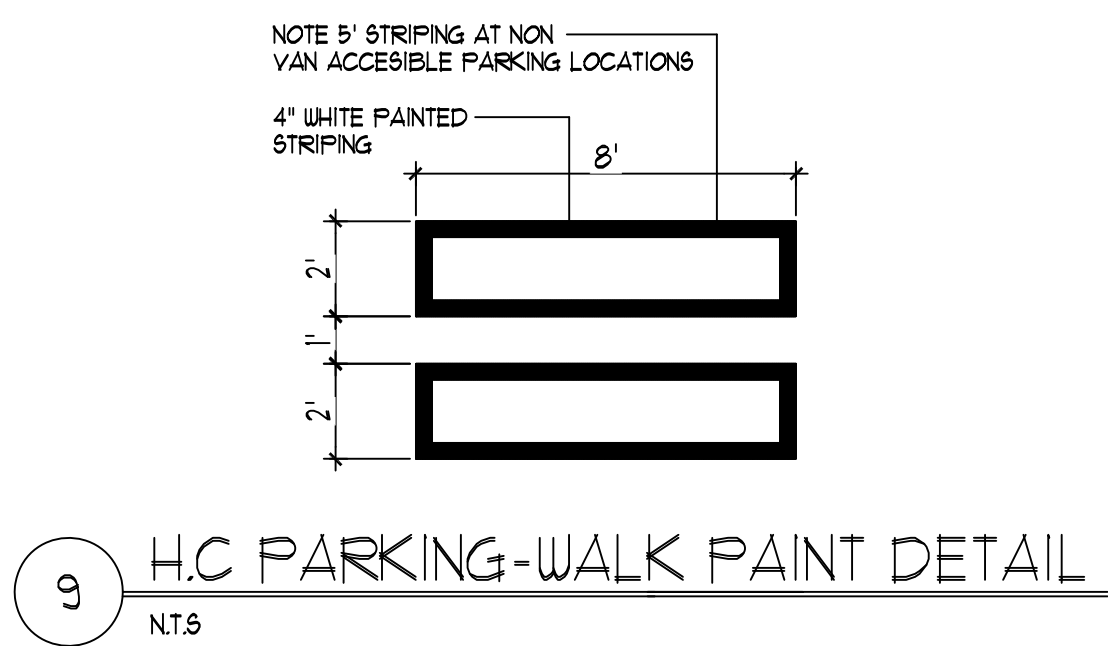
12A MISC. SIGNAGE  
NT.S



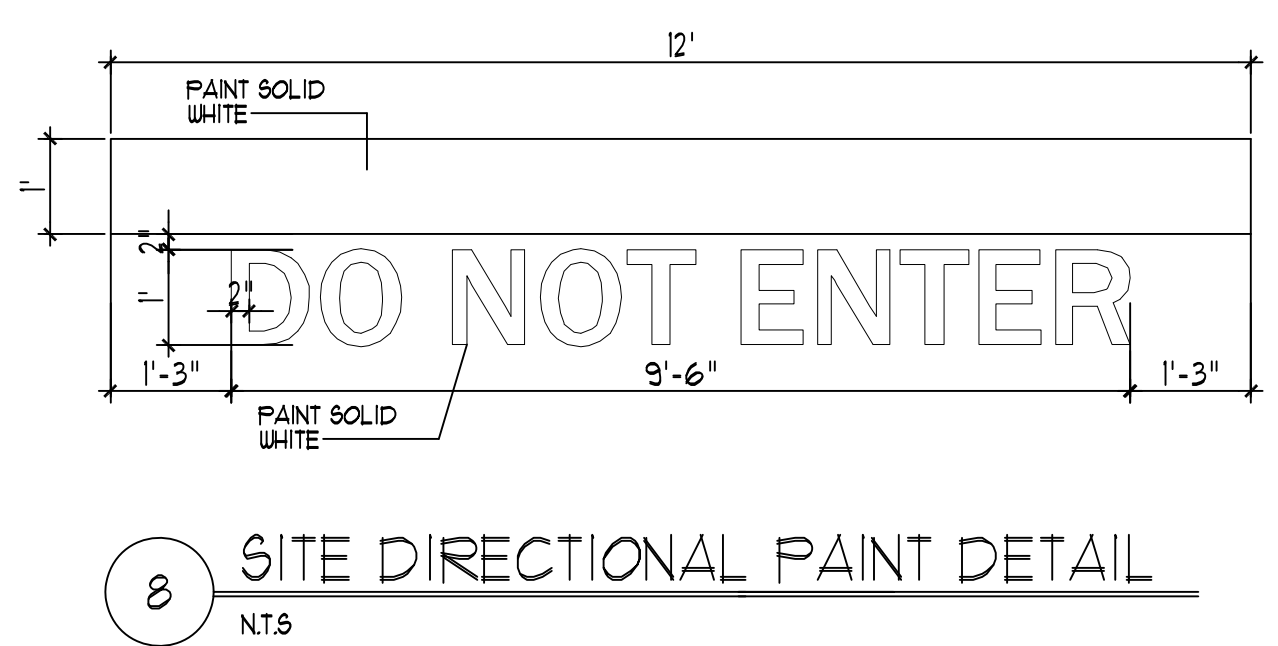
11 H.C. SIGNAGE  
NT.S



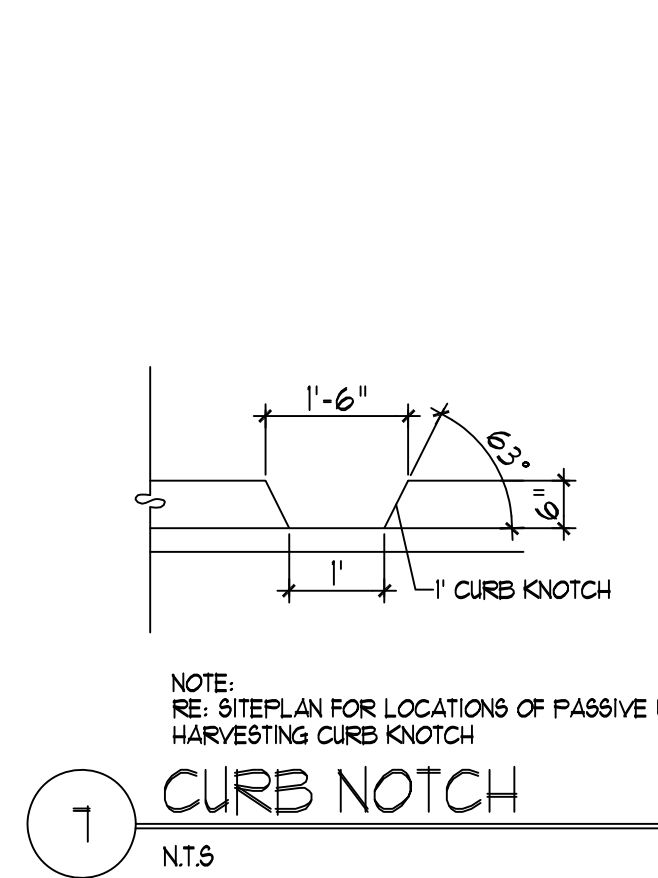
10 BENCH DETAIL  
NT.S



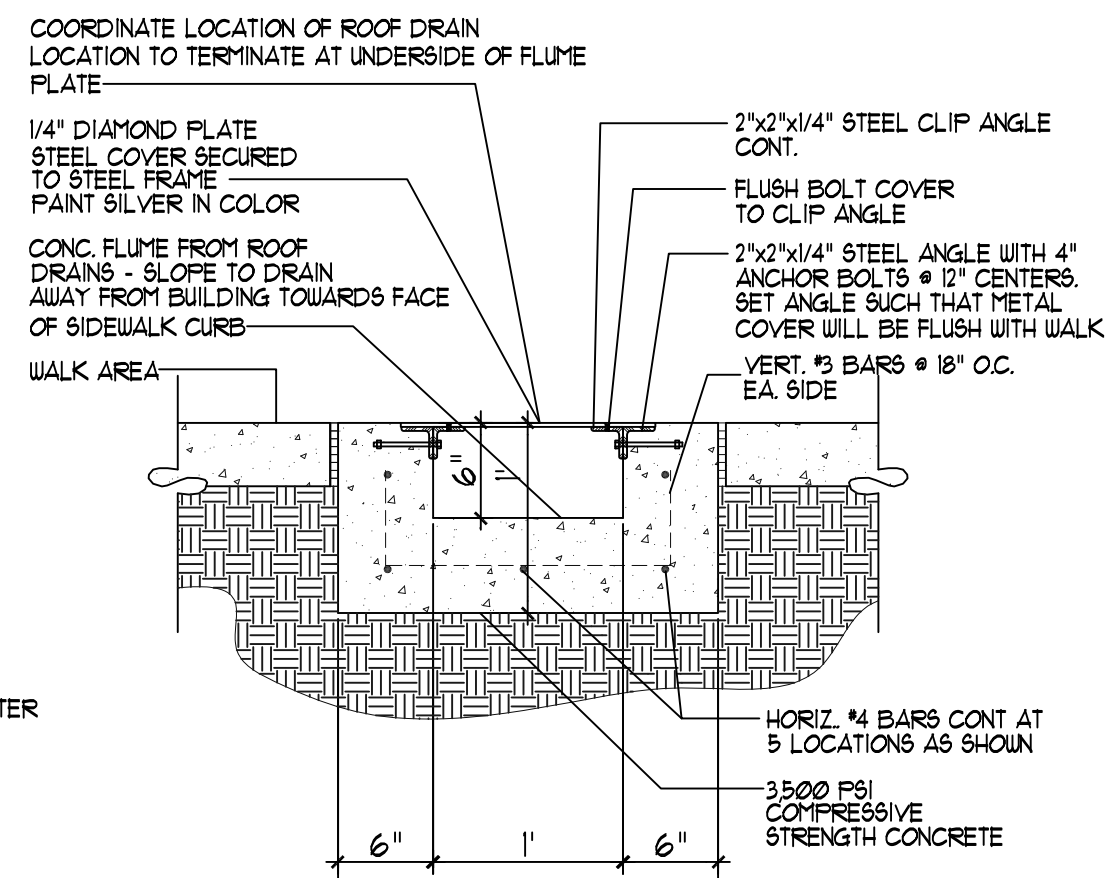
9 H.C. PARKING-WALK PAINT DETAIL  
NT.S



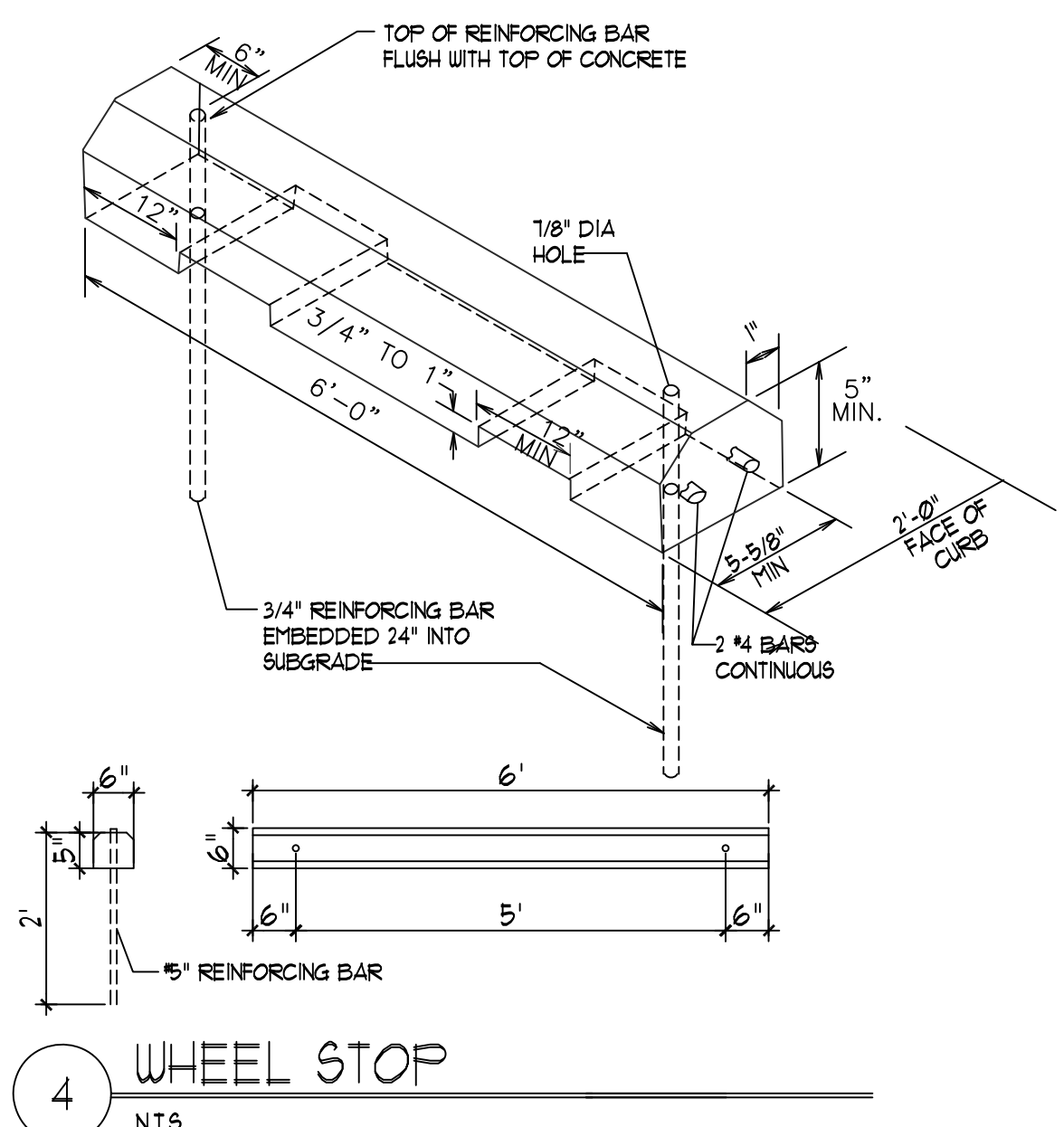
8 SITE DIRECTIONAL PAINT DETAIL  
NT.S



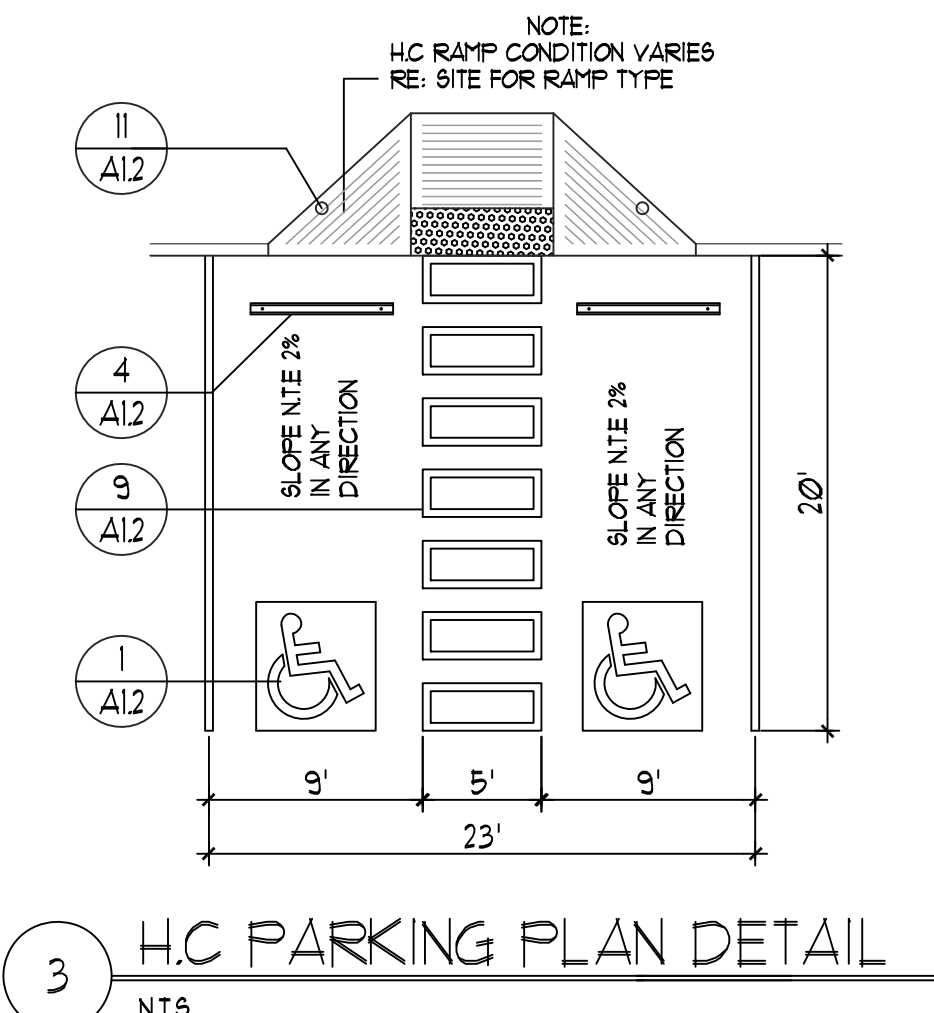
7 CURB NOTCH  
NT.S



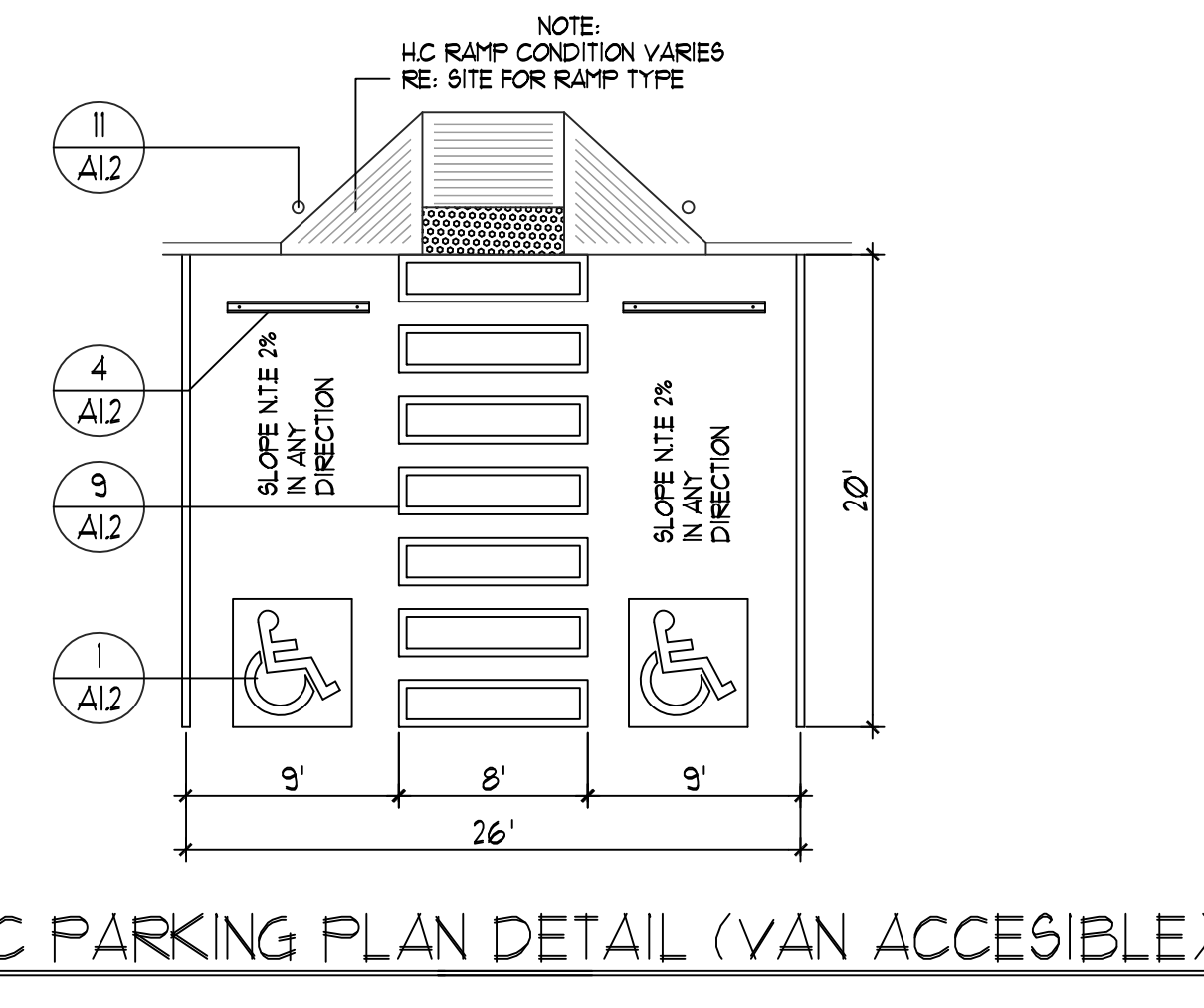
6 CONCRETE FLUME DETAIL  
NT.S



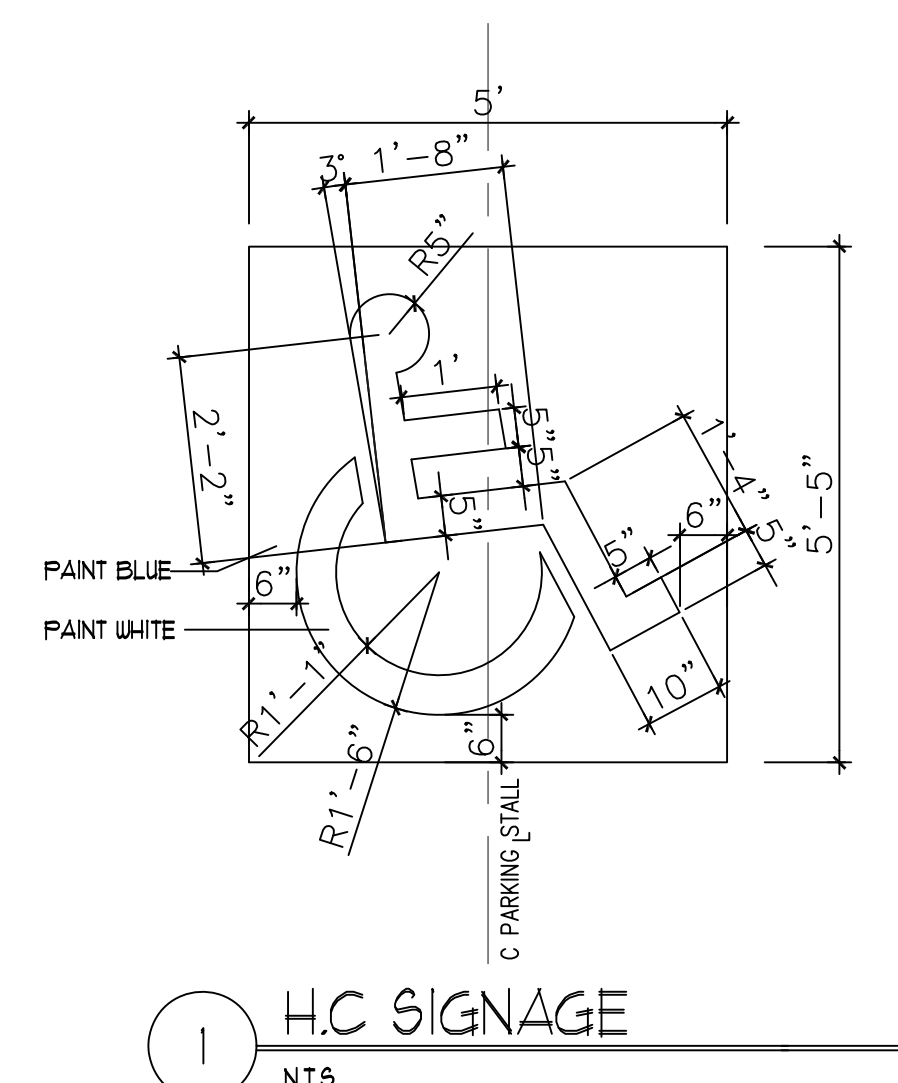
4 WHEEL STOP  
NT.S



3 H.C. PARKING PLAN DETAIL  
NT.S



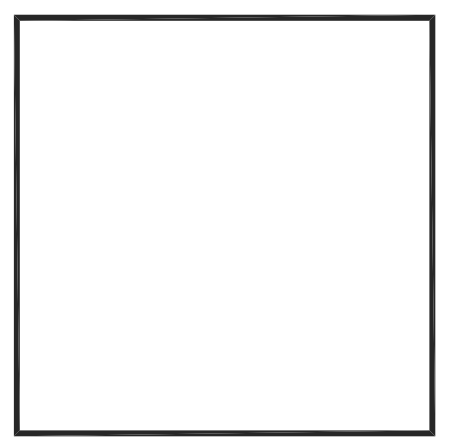
2 H.C. PARKING PLAN DETAIL (VAN ACCESSIBLE)  
NT.S



1 H.C. SIGNAGE  
NT.S

| REV | DATE | BY | REVISION |
|-----|------|----|----------|
| 1   |      |    |          |
| 2   |      |    |          |
| 3   |      |    |          |
| 4   |      |    |          |
| 5   |      |    |          |

**MODULUS ARCHITECTS**  
 220 COPPER AVE. N.W. SUITE 350  
 ALBUQUERQUE, NEW MEXICO 87102  
 PHONE (505) 338-1499 FAX (505) 338-1498

|   |                             |                |
|---|-----------------------------|----------------|
| PROJECT TITLE<br>CARLISLE CROSSING<br>2000 CARLISLE BLVD. NE<br>ALBUQUERQUE, NEW MEXICO | JOB NO.<br>XXXXXX           | DRAWN BY:<br>5 |
| PROJECT MANAGER<br>STEPHEN DUNBAR, AIA  | SHEET TITLE<br>SITE DETAILS |                |

|                    |               |
|--------------------|---------------|
| DATE:<br>7/24/2019 | Sheet:<br>A12 |
| SCALE:<br>AS NOTED |               |