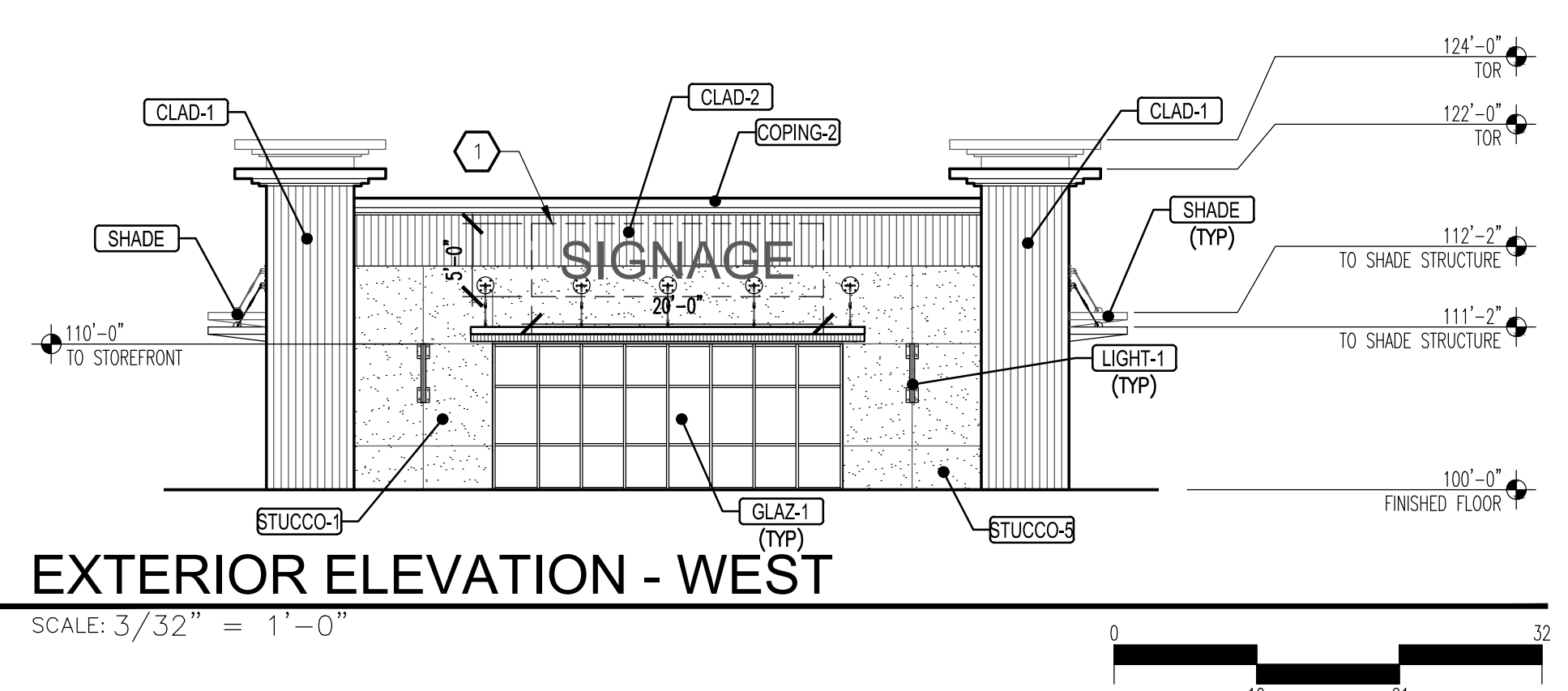
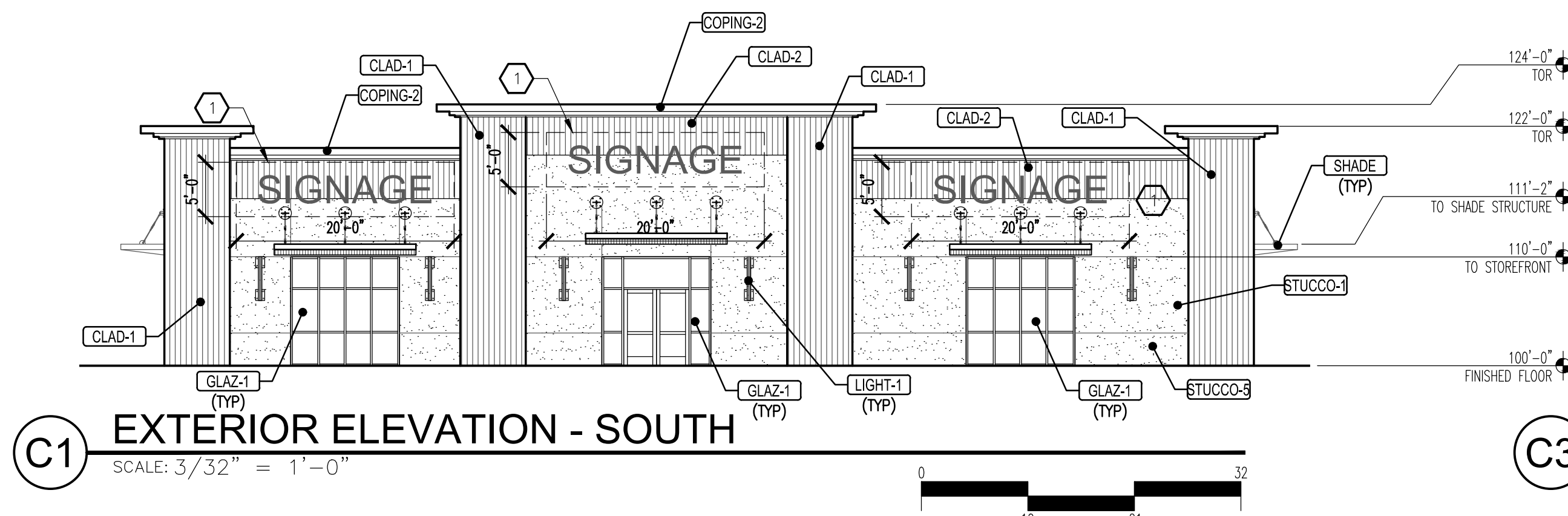
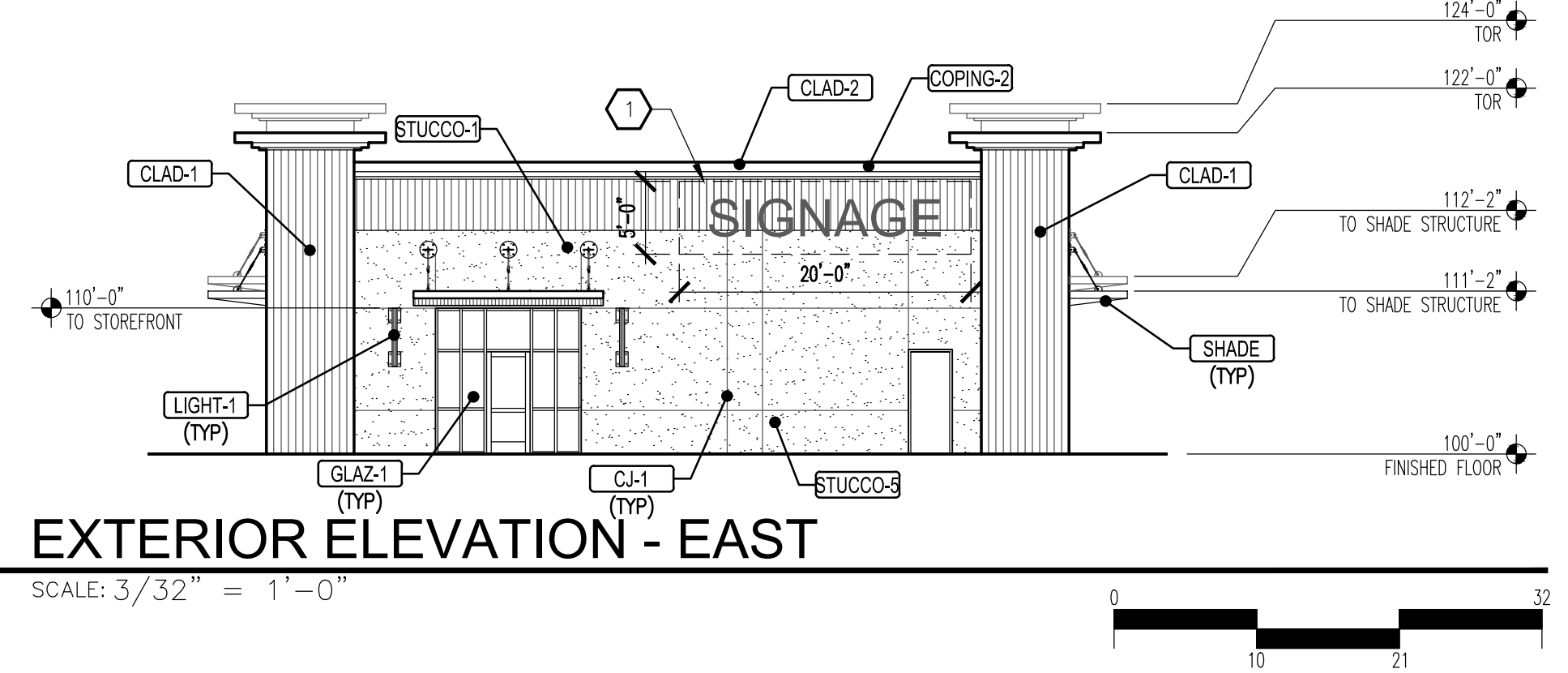
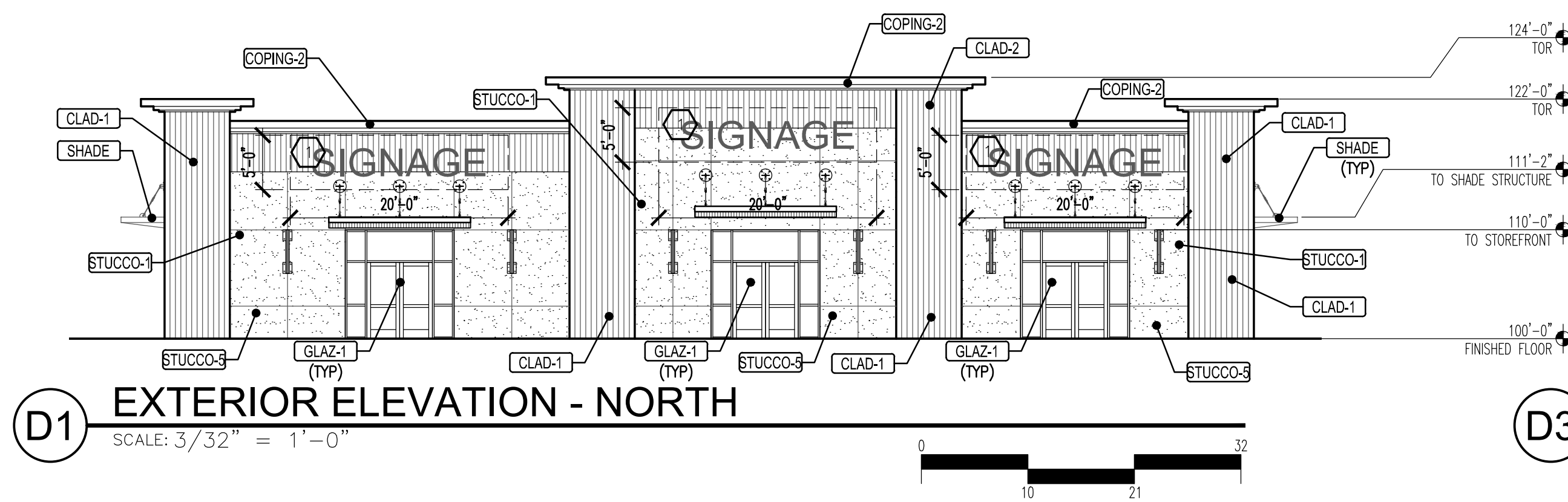


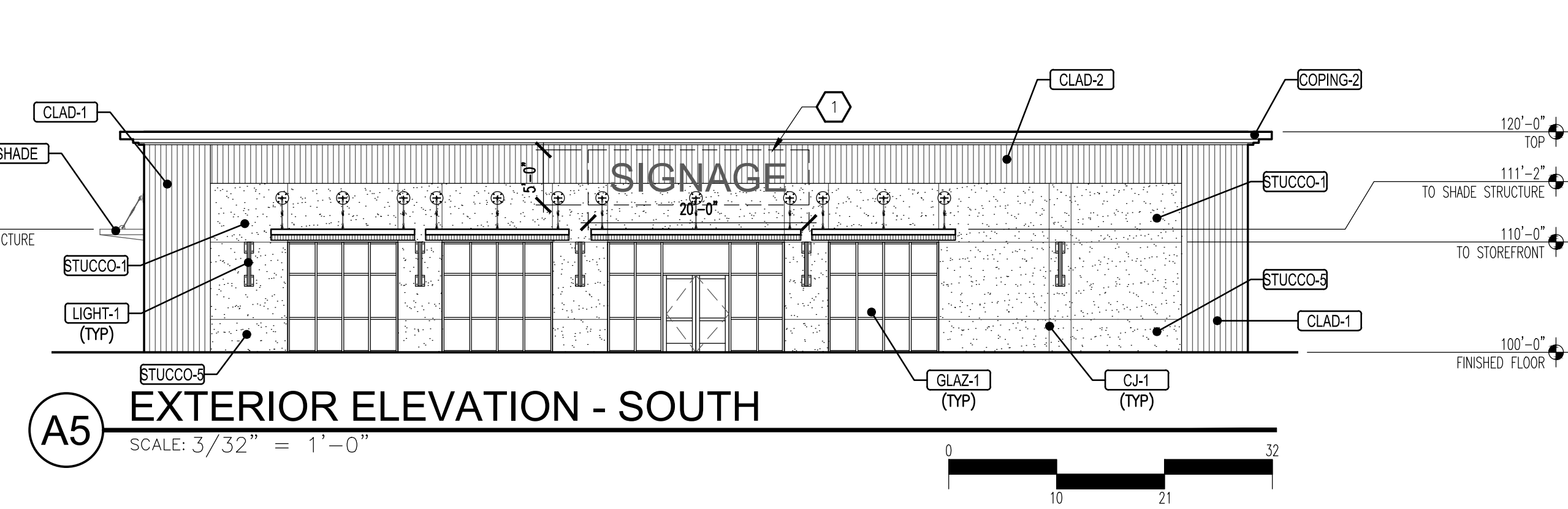
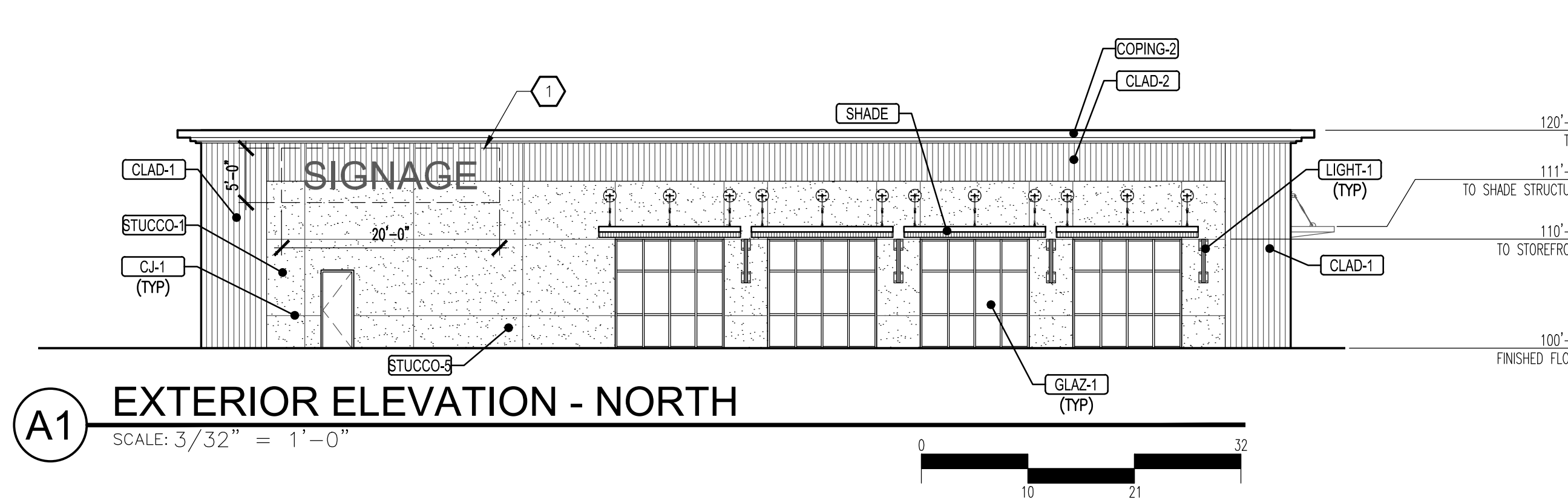
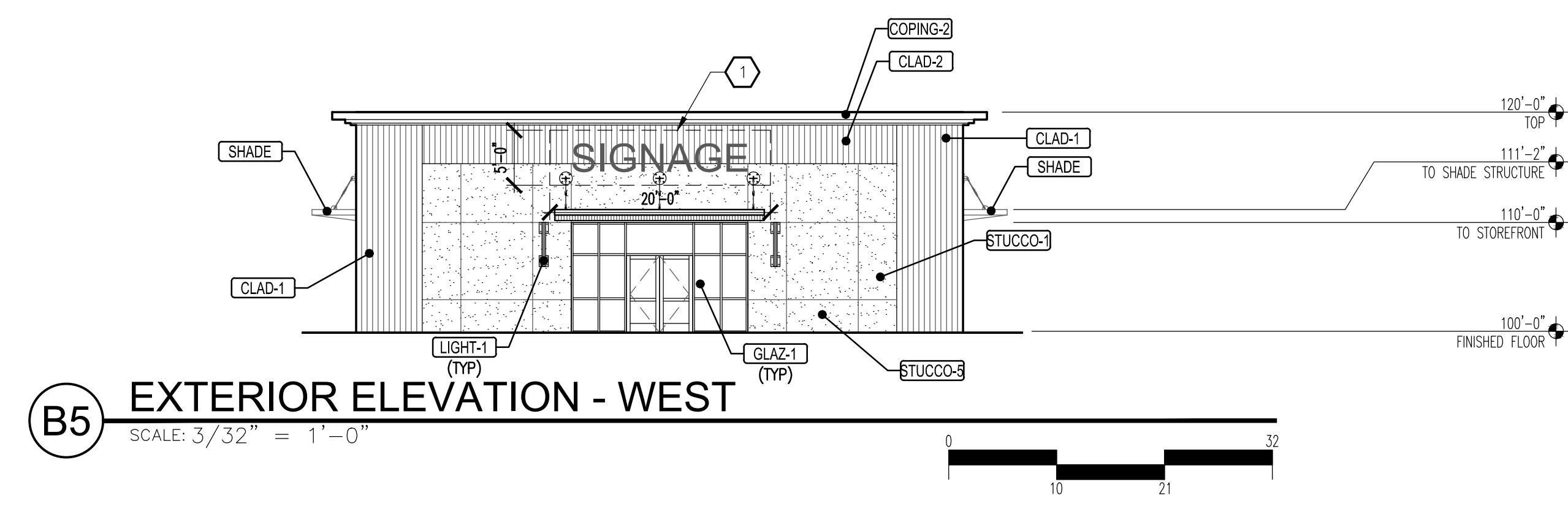
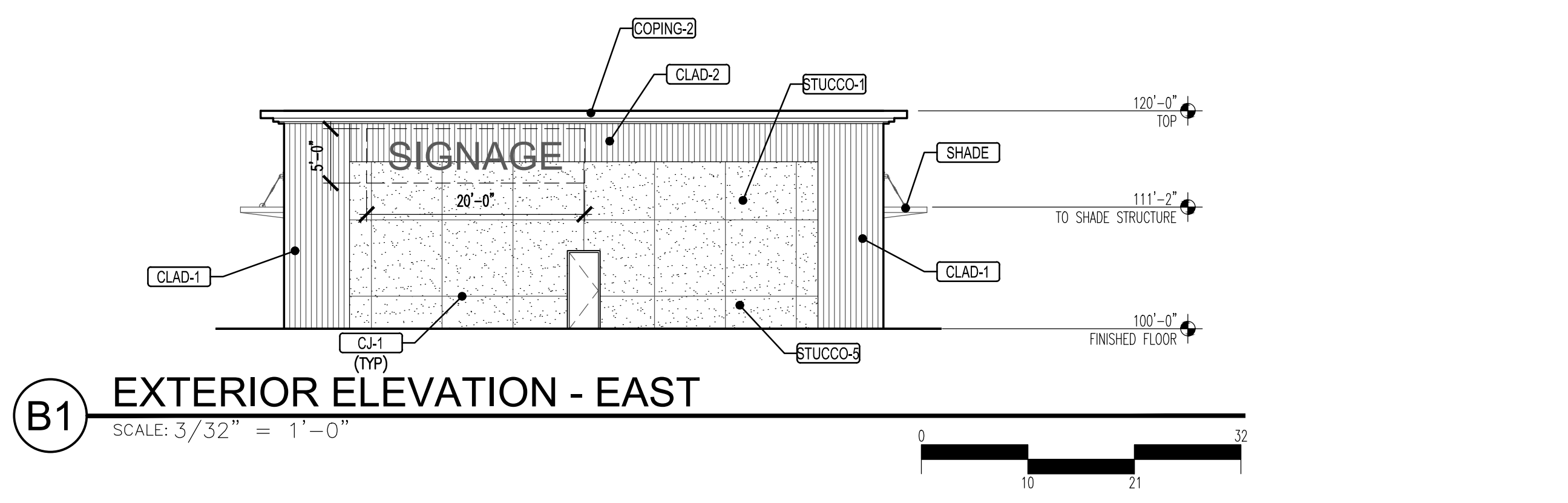
EXTERIOR MATERIALS	
STUCCO-1	2-COAT STUCCO SYSTEM COLOR SHERWIN WILLIAMS #SW6098 PACER WHITE
STUCCO-3	2-COAT STUCCO SYSTEM COLOR SHERWIN WILLIAMS #SW7027 WELL BRED BROWN
COPING-2	GALVANIZED METAL COPING SHERWIN WILLIAMS #SW7046 ANONYMOUS
CLAD-1	COMPOSITE CLADDING BY FIBERON COLOR: SAPELE CLADDING
CLAD-2	COMPOSITE CLADDING BY FIBERON COLOR: CUMARA CLADDING
GLAZ-1	ALUMINUM STOREFRONT SYSTEM WITH CLEAR LW-E GLASS COLOR: ANODIZED BRONZE
LIGHT-1	DECORATIVE SURFACE MOUNTED LIGHT FIXTURE COLOR TO MATCH STOREFRONT FRAME
CJ-1	1/4" STUCCO CONTROL JOINT
SHADE	SHADE STRUCTURE COLOR: FLAT BLACK

REV	DATE	BY	REVISION



KEYED NOTES

- EXTERIOR SIGNAGE. NOTES SIGNAGE SHALL BE PROVIDED AND INSTALLED BY TENANT UNDER A SEPARATE PERMIT.



MODULUS ARCHITECTS
100 SUN AVENUE N.E., Ste 305
ALBUQUERQUE, NEW MEXICO 87109
PHONE (505) 338-1499 FAX (505) 338-1498

PROJECT TITLE: **KMART SITE DEVELOPMENT**
2100 CARLISLE BLVD. NE
ALBUQUERQUE, NEW MEXICO 87110

JOB NO.: **Kmart Dwp**
PROJECT MANAGER: **Devin Nguyen**

DRAWN BY: **DTN**

SHEET TITLE: **EXTERIOR ELEVATIONS**

DATE: **06.28.2019** sheet: **A203**
SCALE: **AS NOTED** et.