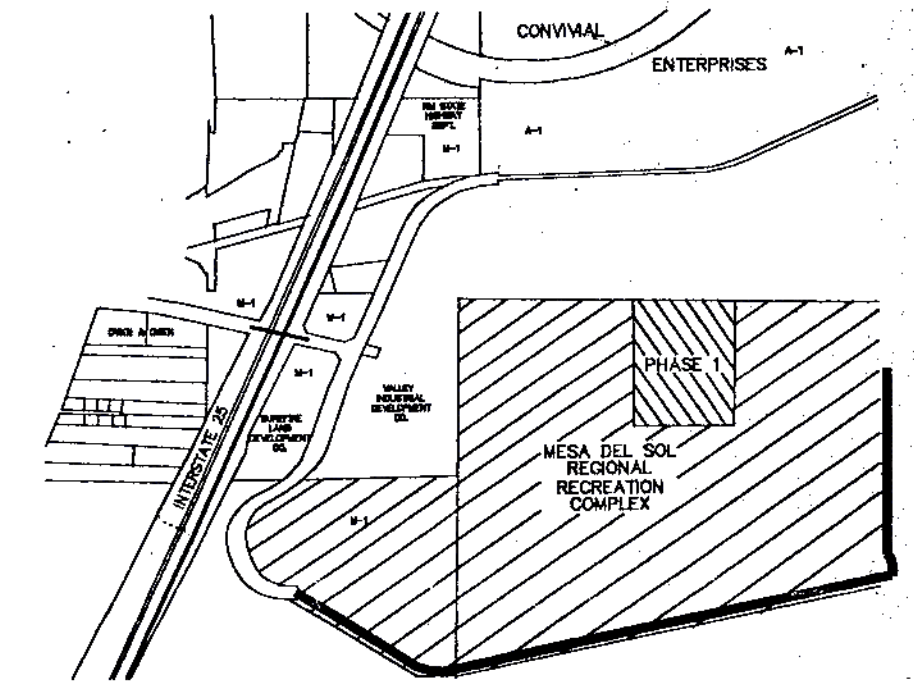
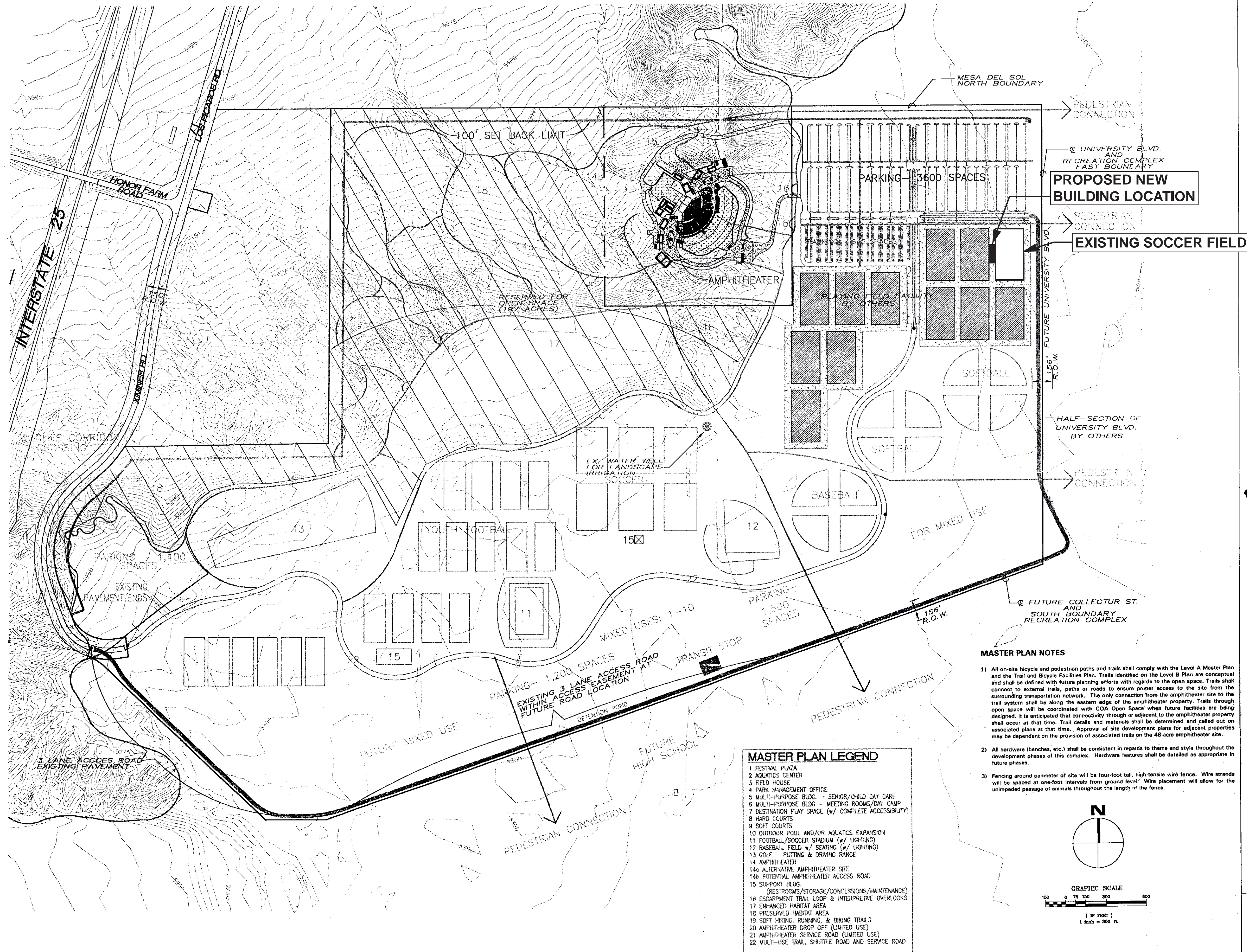


ADMINISTRATIVE AMENDMENT

FILE #: _____ PROJECT #: _____

APPROVED BY

DATE



VICINITY MAP
SCALE 1" = 2000'
ZONE ATLAS MAPS R-14-Z & R-15-Z

SUBDIVISION DATA
PROJECT LIMITS AREA = 48 acres ±
ZONE: SU-1 FOR URBAN REGIONAL PARK
PARKING: 3,800 SPACES
(PROVIDED BY BERNALILLO COUNTY, Z-97-141)

LEGAL DESCRIPTION
THAT CERTAIN PARCEL OF LAND SITUATE WITHIN SECTION 21,
AND THE EAST HALF OF SECTION 20, TOWNSHIP 9 NORTH,
RANGE 3 EAST, BERNALILLO COUNTY, NEW MEXICO,
CONSISTING OF 48 ACRES ±

DRB 99-6
CASE NUMBER Z-98-26

THIS PLAN IS CONSISTENT WITH THE SPECIFIC SITE DEVELOPMENT
PLAN APPROVED BY THE ENVIRONMENTAL PLANNING COMMISSION
ON DECEMBER, 1997 AND THE FINDINGS IN THE OFFICIAL
NOTICE OF DECISION HAVE BEEN COMPLETED WITH.

DR. 12-20-97	DATE	12/20/97
PLANNING	DATE	11-3-99
BRADLEY BINGHAM	DATE	11-03-99
UTILITY DEVELOPMENT	DATE	11-14-99
MARCO DAVIS	DATE	11-3-99
TRANSPORTATION DEVELOPMENT	DATE	
JAMES CHASE	DATE	
CITY ENGINEER / HYDROLOGIST	DATE	
CHRISTOPHER STANG	DATE	
PARKS & RECREATION DEPARTMENT	DATE	

PROJECT DESCRIPTION

AMPHITHEATER AND ASSOCIATED FACILITIES INCLUDING STORAGE FACILITIES, RESTROOMS, TICKET SALES OFFICE AND CONCESSIONS. THE AMPHITHEATER ACCOMMODATES A MAXIMUM OF 8,400 SPECTATORS PURSUANT TO THE MESA DEL SOL LEVEL B PLAN AND TRAFFIC IMPACT STUDY APPROVED MAY 25, 1998. CAPACITY TO EXPAND TO 15,000 ONCE ACCESS IS PROVIDED FROM UNIVERSITY BOULEVARD.

SHEET INDEX

SHEET 1	OVERALL PLAN
SHEET 2	SITE PLAN
SHEET 3	CONCEPTUAL LANDSCAPE PLAN
SHEET 4	SITE DRAINAGE PLAN
SHEET 5	SITE GRADING PLAN
SHEET 6	STAGE ELEVATIONS
SHEET 7	ENTRANCE GATE ELEVATIONS
SHEET 8	BOX OFFICE/CONCESSION ELEVATIONS
SHEET 9	BACKSTAGE FACILITIES ELEVATIONS
SHEET 10	FIRST AID/ADMINISTRATION BUILDING ELEVATIONS
SHEET 11	RESTROOM BUILDING ELEVATIONS
SHEET 12	FACILITY SIGNAGE PLAN
SHEET 13	SIGNAGE DETAILS
SHEET 14	LIGHTING PLAN

SEATING CAPACITY: SEE SHEET 2, NOTE B

AMPHITHEATER AND ASSOCIATED FACILITIES INCLUDING STORAGE FACILITIES, RESTROOMS, TICKET SALES OFFICE AND CONCESSIONS. THE AMPHITHEATER ACCOMMODATES A MAXIMUM OF 12,000 SPECTATORS PURSUANT TO THE MESA DEL SOL LEVEL B PLAN, TRAFFIC IMPACT STUDY APPROVED MAY 25, 1998. SUPPLEMENTAL TRAFFIC ANALYSIS DATED JUNE, 2000, AND THAT PERFORMANCE WILL BE CONTROLLED EVENTS WITH APPROVED TRAFFIC MANAGEMENT. CAPACITY TO EXPAND TO 15,000 ONCE ACCESS IS PROVIDED FROM UNIVERSITY BOULEVARD.

November 2, 1999

MESA DEL SOL REGIONAL RECREATION COMPLEX

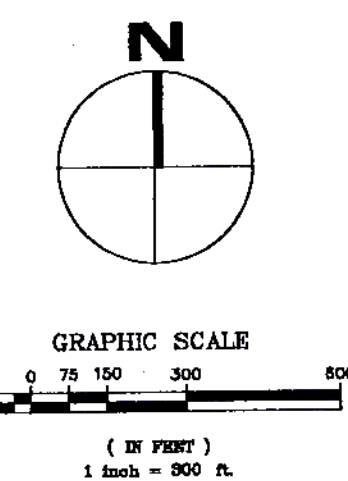
PHASE 1B AMPHITHEATER OVERALL PLAN SHEET 1 OF 14

MASTER PLAN NOTES

- All on-site bicycle and pedestrian paths and trails shall comply with the Level A Master Plan and the Trail and Bicycle Facilities Plan. Trails identified on the Level B Plan are conceptual and shall be defined with future planning efforts with regards to the open space. Trails shall connect to external trails, paths or roads to ensure proper access to the site from the surrounding transportation network. The only connection from the amphitheater site to the trail system shall be along the eastern edge of the amphitheater property. Trails through open space will be coordinated with COA Open Space when future facilities are being designed. It is anticipated that connectivity through or adjacent to the amphitheater property shall occur at that time. Trail details and materials shall be determined and called out on associated plans at that time. Approval of site development plans for adjacent properties may be dependent on the provision of associated trails on the 48-acre amphitheater site.
- All hardware (benches, etc.) shall be consistent in regards to theme and style throughout the development phases of this complex. Hardware features shall be detailed as appropriate in future phases.
- Fencing around perimeter of site will be four-foot tall, high-tensile wire fence. Wire strands will be spaced at one-foot intervals from ground level. Wire placement will allow for the unimpeded passage of animals throughout the length of the fence.

MASTER PLAN LEGEND

- FESTIVAL PLAZA
- AQUATICS CENTER
- FIELD HOUSE
- PARK MANAGEMENT OFFICE
- MULTI-PURPOSE BLDG. - SENIOR/CHILD DAY CARE
- MULTI-PURPOSE BLDG. - MEETING ROOMS/DAY CAMP
- DESTINATION PLAY SPACE (w/ COMPLETE ACCESSIBILITY)
- HARD COURTS
- SOFT COURTS
- OUTDOOR POOL AND/OR AQUATICS EXPANSION
- FOOTBALL/SOCCER STADIUM (w/ LIGHTING)
- BASEBALL FIELD w/ SEATING (w/ LIGHTING)
- GOLF - PUTTING & DRIVING RANGE
- AMPHITHEATER
- ALTERNATIVE AMPHITHEATER SITE
- POTENTIAL AMPHITHEATER ACCESS ROAD
- SUPPORT BLDG. (RESTROOMS/STORAGE/CONCESSIONS/MAINTENANCE)
- ESCAPMENT TRAIL LOOP & INTERPRETIVE OVERLOOKS
- ENHANCED HABITAT AREA
- PRESERVED HABITAT AREA
- SOFT HIKING, RUNNING, & BIKING TRAILS
- AMPHITHEATER DROP OFF (LIMITED USE)
- AMPHITHEATER SERVICE ROAD (LIMITED USE)
- MULTI-USE TRAIL, SHUTTLE ROAD AND SERVICE ROAD

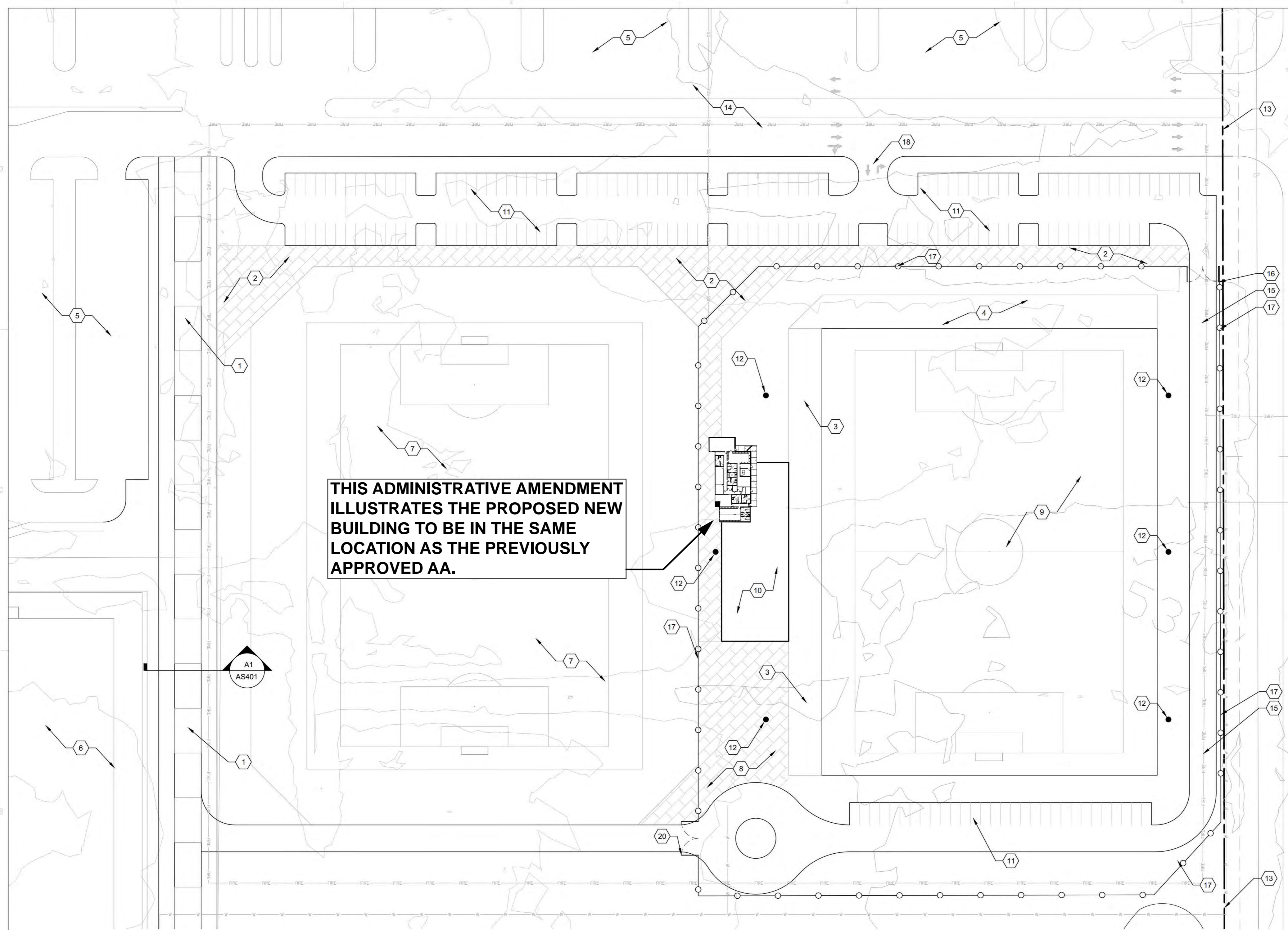


PREVIOUSLY APPROVED SITE PLAN • MODIFIED PER THIS ADMINISTRATIVE AMENDMENT • LOCKER ROOM FACILITY AT MDS

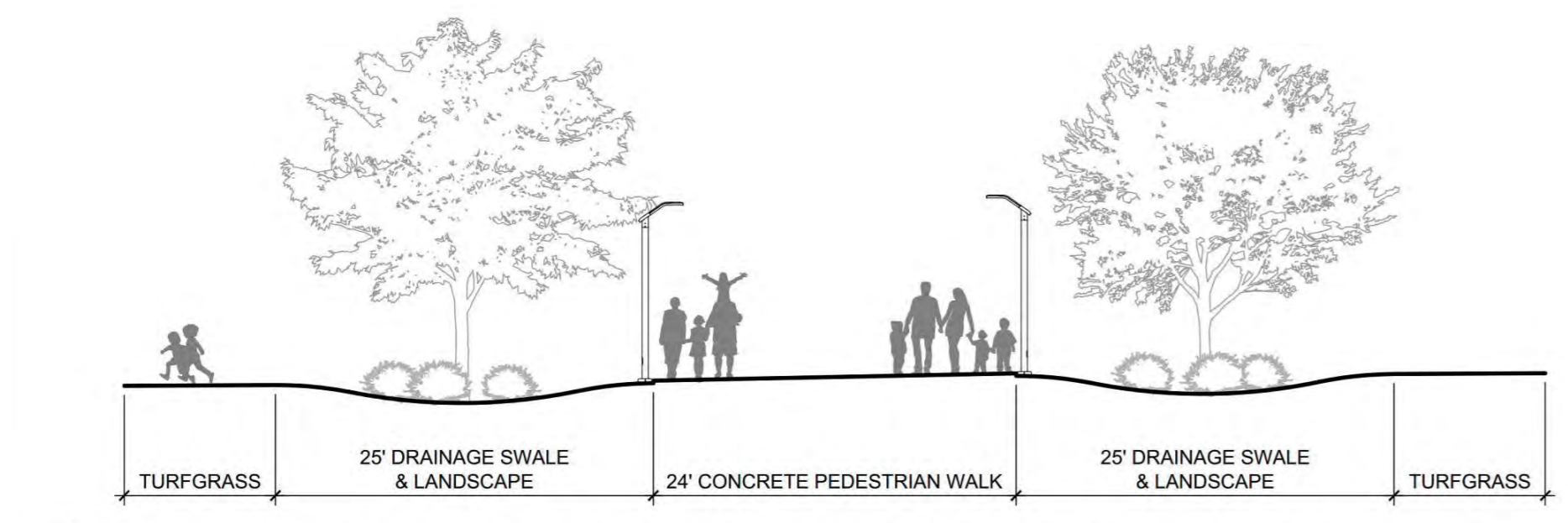
LEE GAMELSKY ARCHITECTS P.C.
2412 MILES RD. SE
ALBUQUERQUE, NM 87106
505.842.8865 lee@lganm.com

SHEET KEYED NOTES

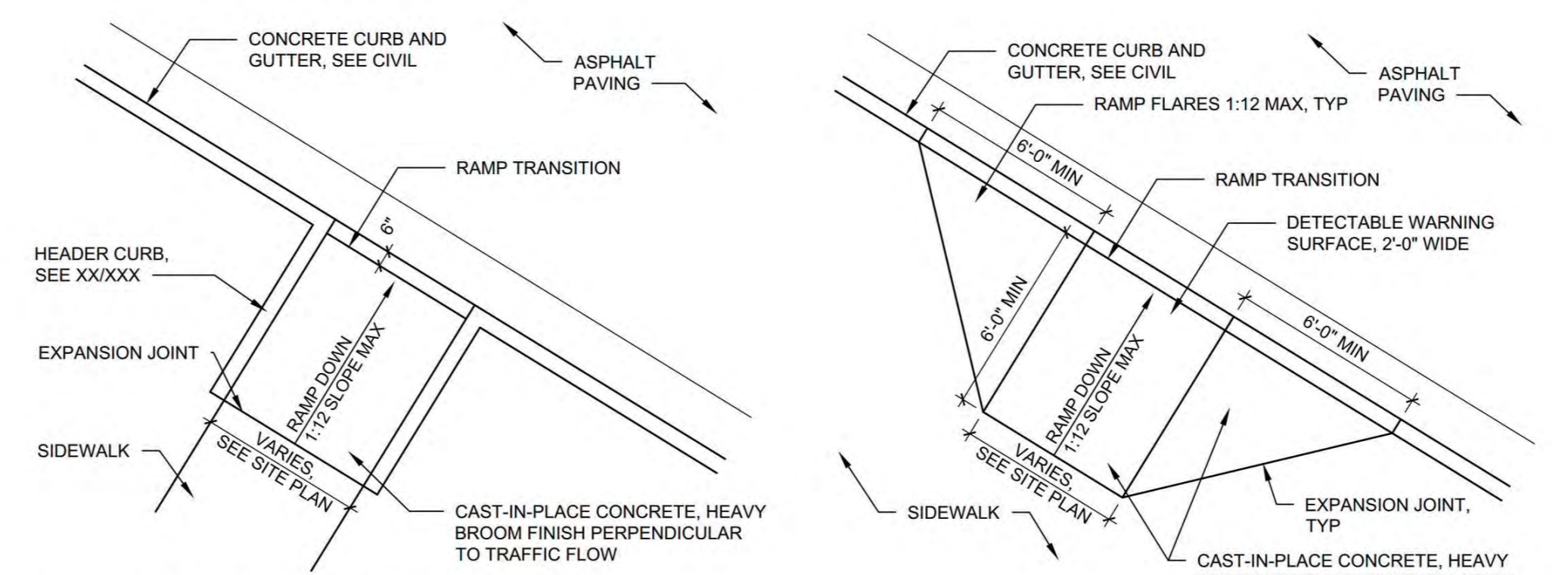
1. CONCRETE PEDESTRIAN WALK
2. CONCRETE ENTRY PLAZA
3. SPECTATOR BLEACHER SEATING SYSTEM
4. BLEACHER EXPANSION AREA
5. EXISTING PARKING
6. EXISTING TURF GRASS MULTI-USE FIELDS
7. FUTURE INDOOR PRACTICE FACILITY
8. SERVICE AREA
9. TURF GRASS PRACTICE FIELD
10. NEW MEXICO UNITED CLUBHOUSE
11. PROPOSED PARKING
12. SPORT FIELD LIGHTING
13. PROPERTY LINE
14. EXISTING VEHICLE ENTRY ROAD
15. EMERGENCY AND SERVICE ACCESS ROAD
16. VEHICULAR GATE
17. ORNAMENTAL IRON FENCING, COLOR BLACK
18. RIGHT IN, RIGHT OUT INTERSECTION



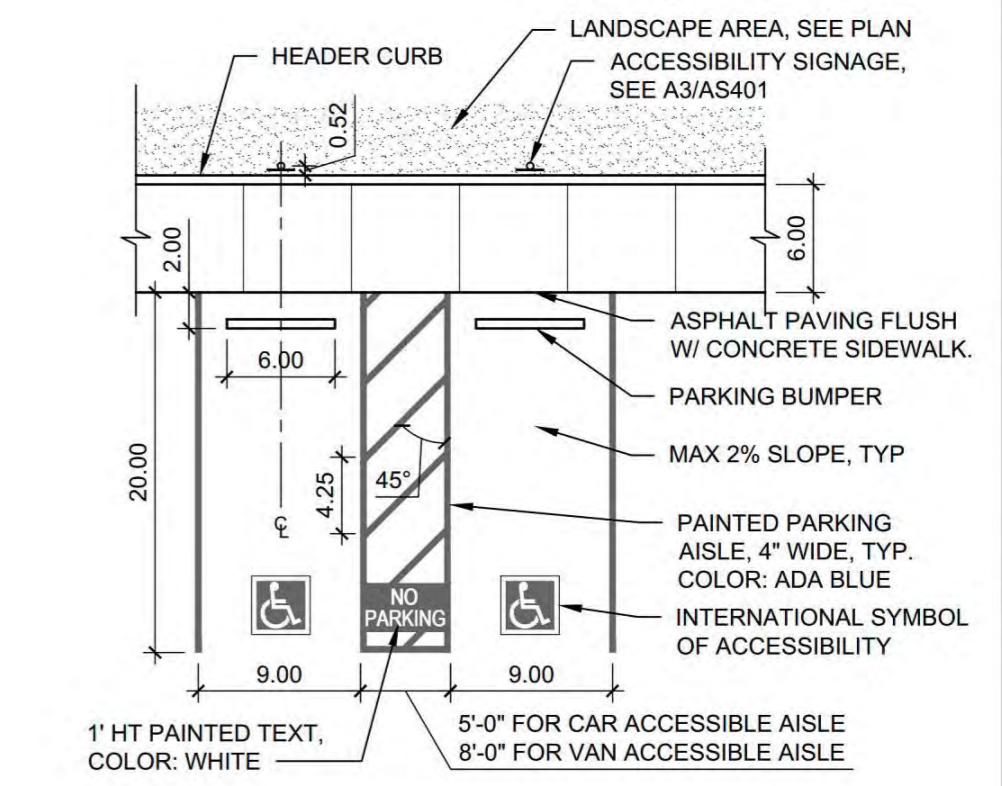
B1 SITE PLAN ENLARGEMENT - PHASE I
1" = 50'-0"
0 50' 100'



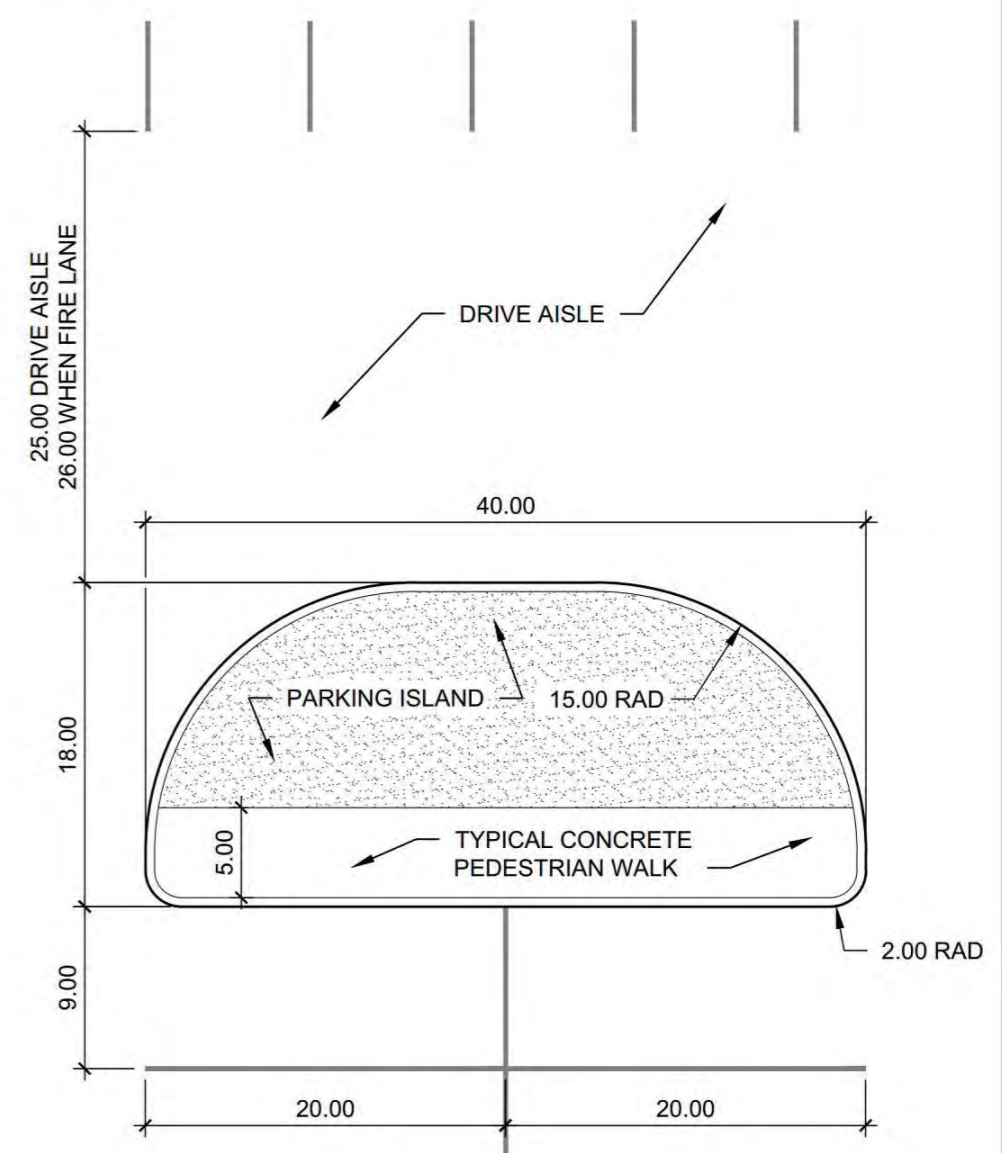
A1 SECTION - CENTRAL PEDESTRIAN PROMENADE
1" = 10'-0"
0 10' 20'



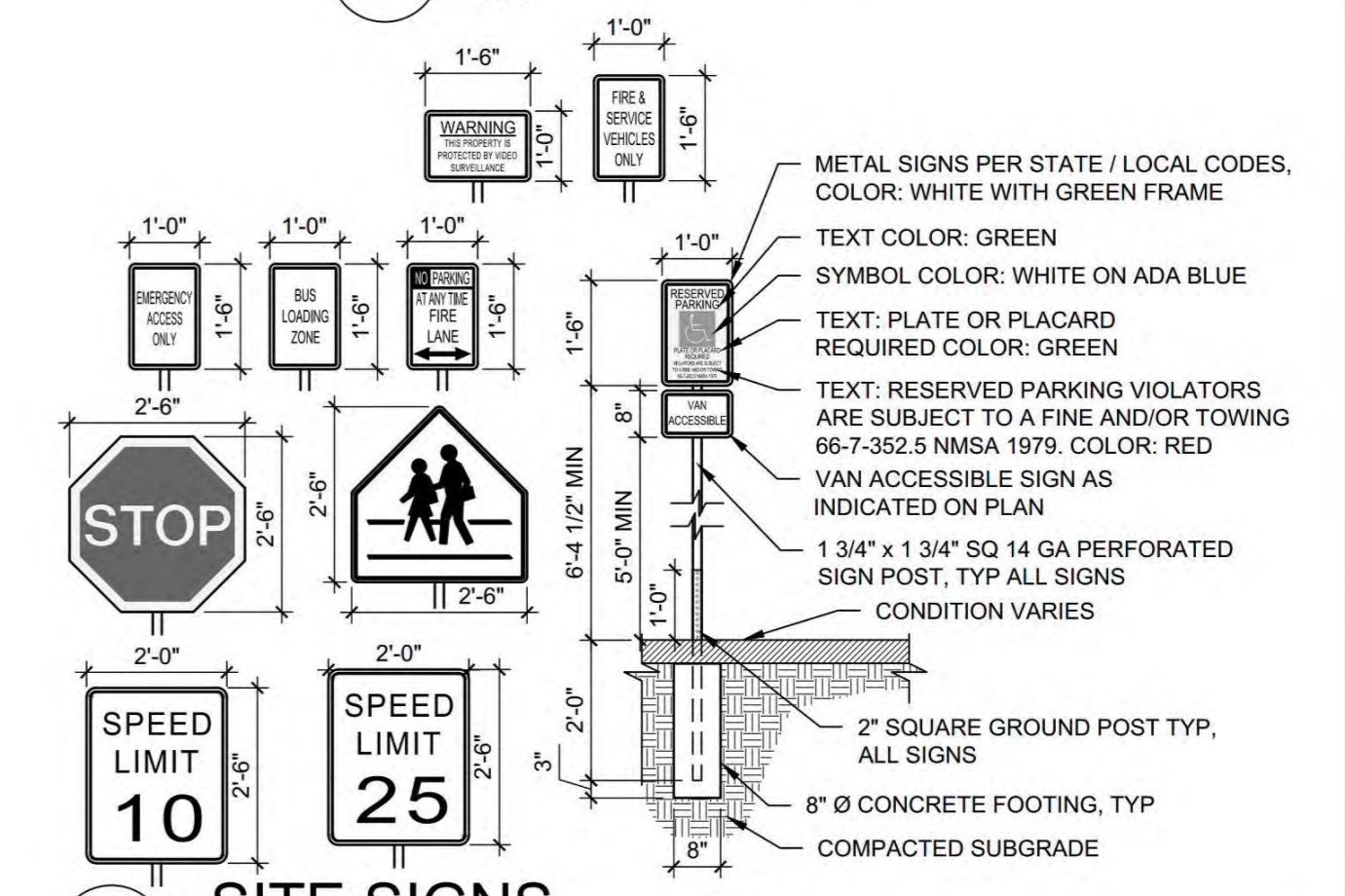
A2 ACCESSIBLE RAMPS
NTS



C4 ACCESSIBLE PARKING
NTS



B4 TYPICAL PARKING ISLAND, STALL, AND DRIVE
NTS

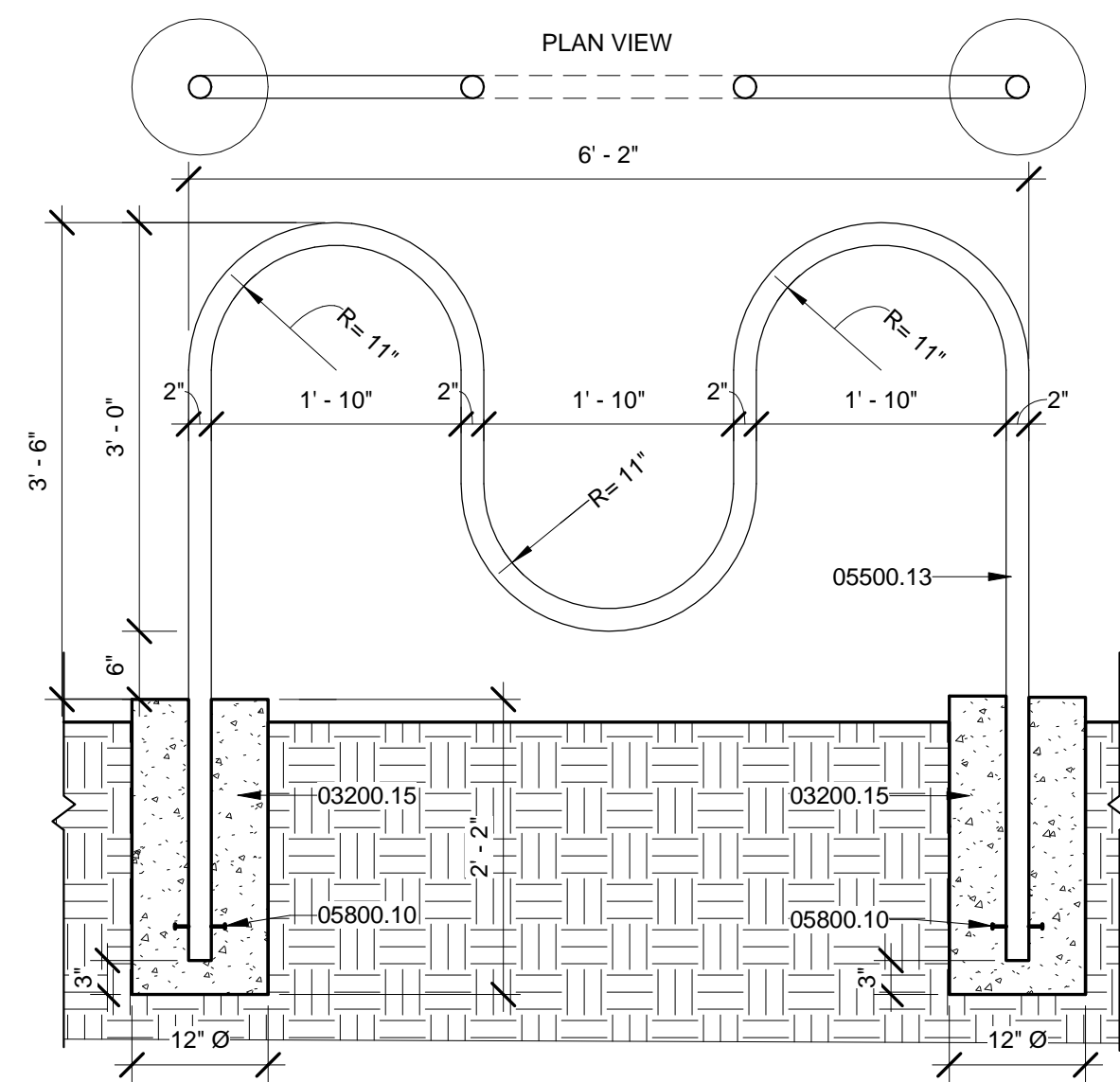


A4 SITE SIGNS
NTS

**ADMINISTRATIVE AMENDMENT • SITE PLAN
LOCKER ROOM FACILITY AT MDS**

PREVIOUSLY APPROVED ADMINISTRATIVE AMENDMENT.

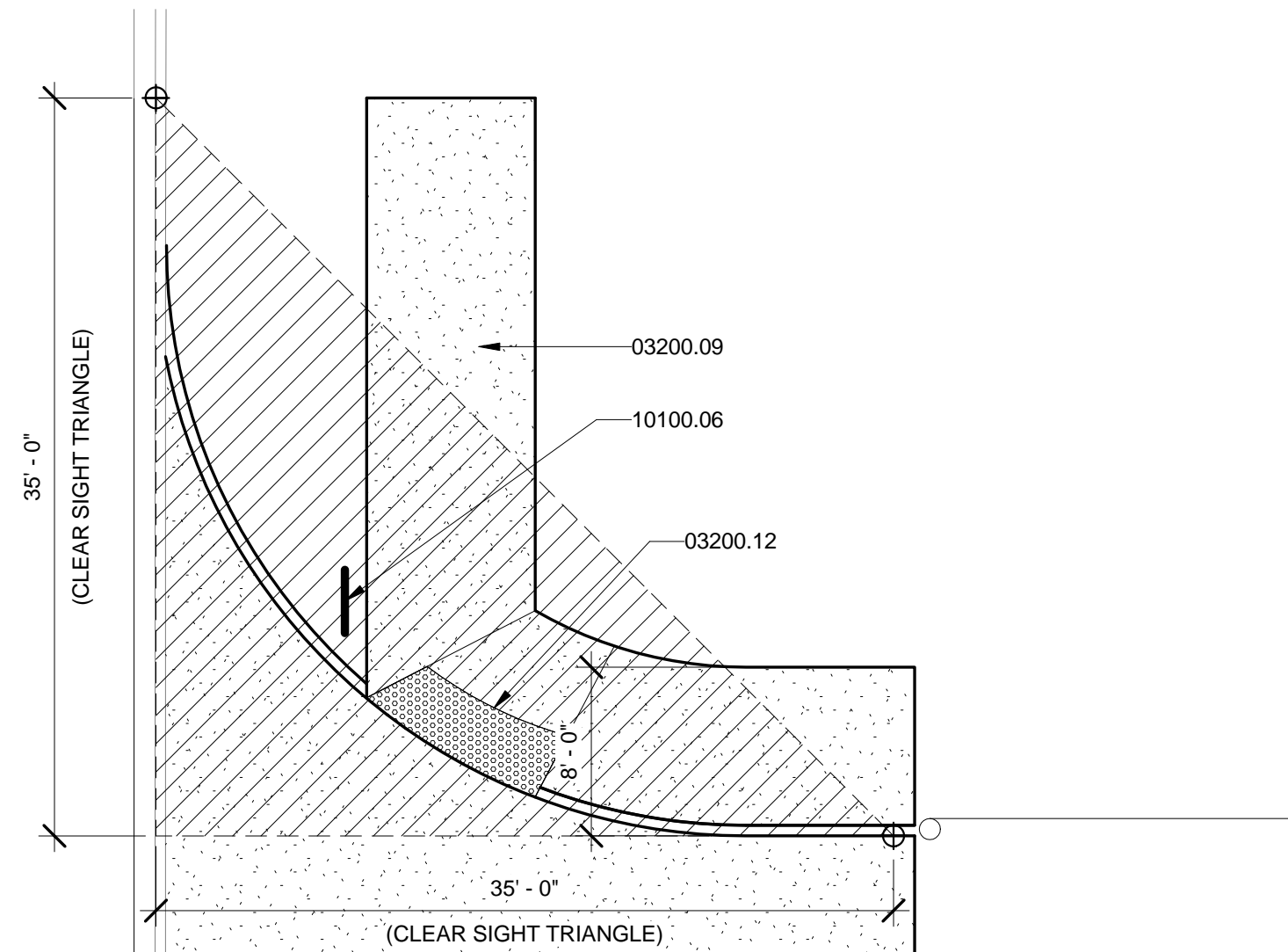
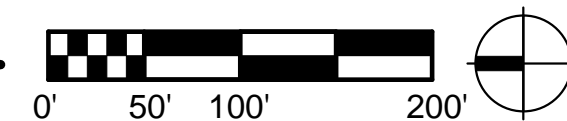
PROJECT NO: PR-2019-003069
CASE NO: SI-2019-00365
APPROVED: 27 APRIL 2020



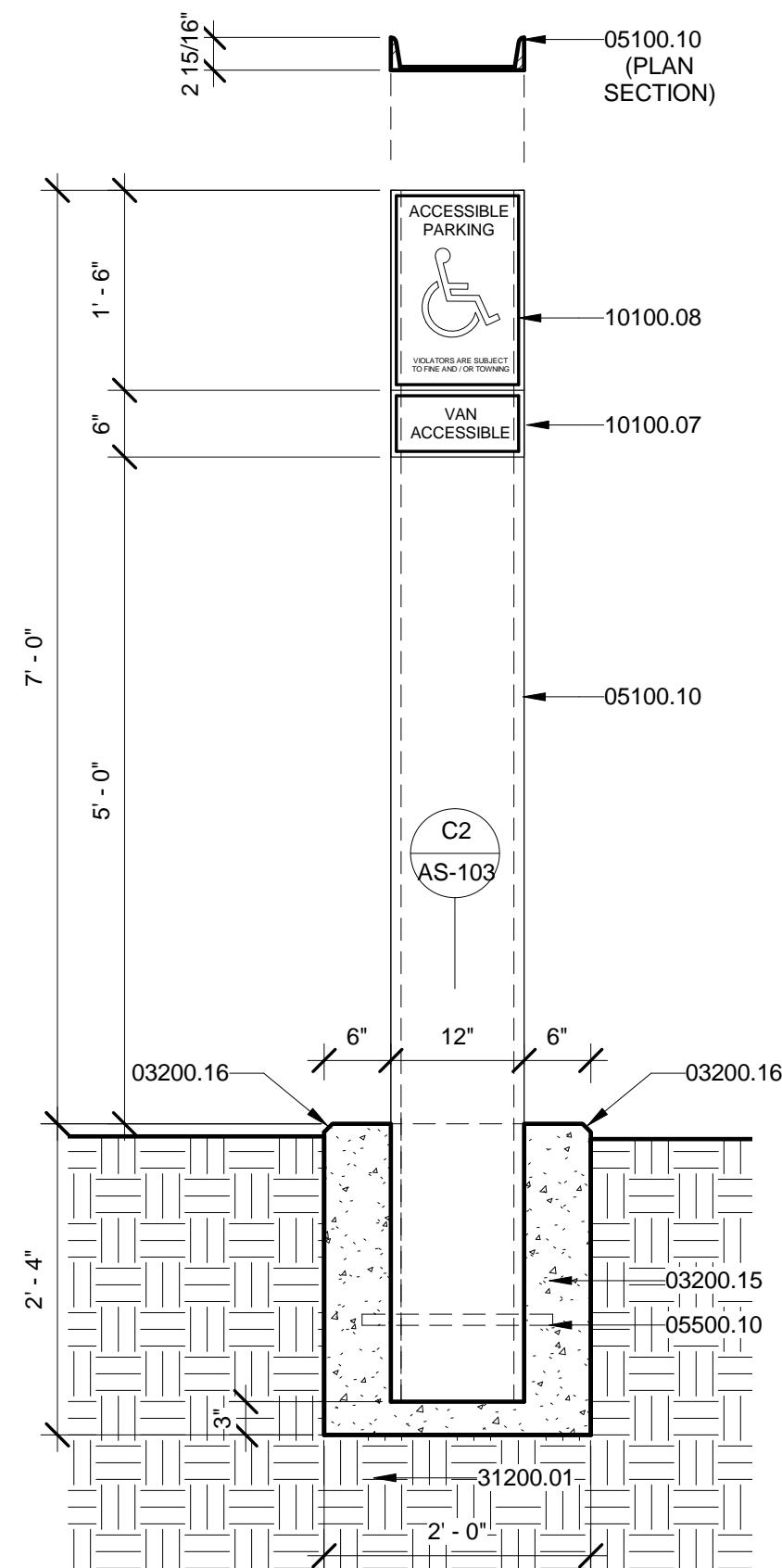
D1 BIKE-RACK DETAIL
3/4" = 1'-0"



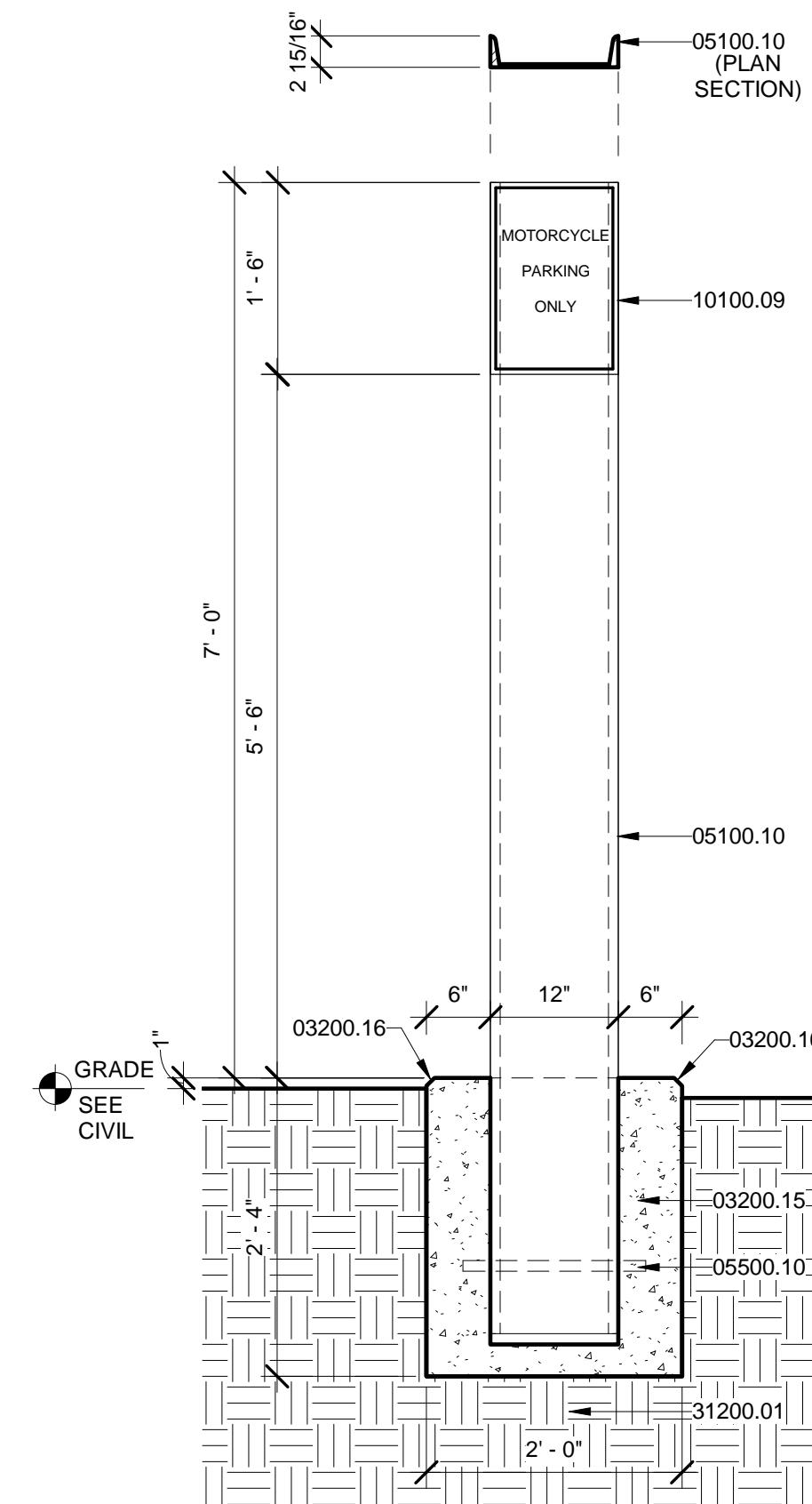
A1 OVERALL SITE PLAN-AA
1" = 100'-0"



C3 CLEAR-SITE TRIANGLE PLAN
1/8" = 1'-0"



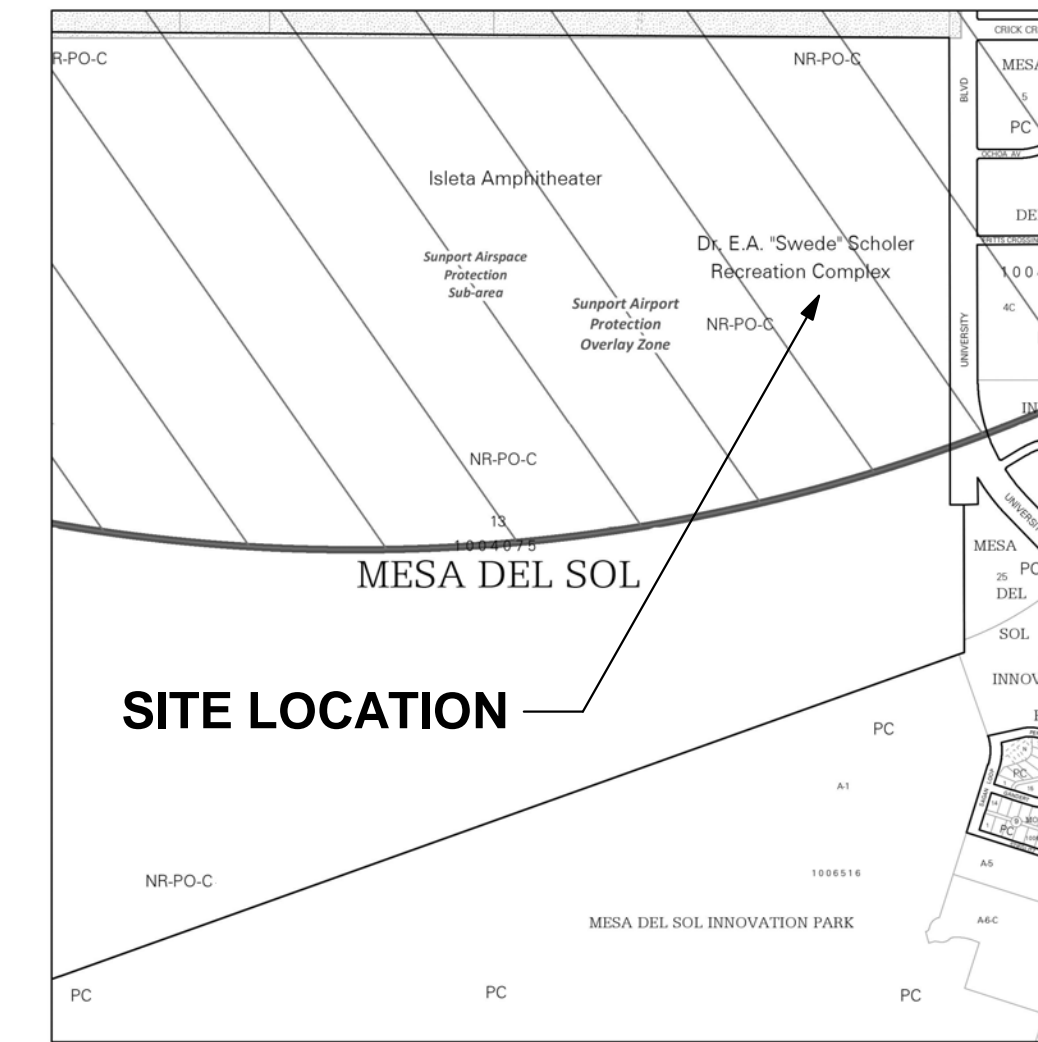
A3 ACCESSIBLE-PARKING SIGN
3/4" = 1'-0"



A4 MOTORCYCLE-PARKING SIGN
3/4" = 1'-0"

KEYED NOTES

- 01100.01 PROPERTY LINE.
- 03200.09 CONCRETE SIDEWALK PER CITY OF ALBUQUERQUE STANDARD SPECIFICATIONS. REFER TO CITY STANDARD DETAIL DWG. 2430. SEE CIVIL.
- 03200.12 CONCRETE ACCESSIBLE SIDEWALK RAMP WITH TRUNCATED DOMES. PER CITY OF ALBUQUERQUE STANDARD SPECIFICATION. REFER TO COA STANDARD DWGS. 2440 AND 2441. SEE CIVIL.
- 03200.15 4000 PSI, AIR-ENTRAINED CAST IN PLACE CONCRETE FOOTING.
- 03200.16 CHAMFER OUTSIDE EDGE 3/4", TYPICAL.
- 05100.10 STEEL CHANNEL POST, C12 X 20.7, SIGN POST. PRIME AND PAINT. SEE SITE DETAILS.
- 05500.10 NO. 6 REBAR, X 18" LONG BAR, DRILL HOLES IN 'C' CHANNEL FLANGE, TACK WELD STEEL BAR INTO PLACE.
- 05500.13 2"Ø STEEL PIPE BIKE RACK. SET IN CONCRETE FOOTING. GRIND EDGES SMOOTH. PRIME AND PAINT.
- 05800.10 (3) 3" LONG STUD BOLTS WELDED TO PIPE.
- 10100.06 STOP SIGN (R1-1) AND NO LEFT TURN SIGN (R3-1) PER MUTCD STANDARDS. ALUMINUM OR FIBERGLASS PLATE; SIGN FIELD IS RED, BORDER AND LETTERING ARE WHITE. SEE DETAIL C4 / AS-103.
- 10100.07 PROVIDE "VAN ACCESSIBLE" SIGN AT DESIGNATED LOCATIONS. SEE ENLARGED SITE PLANS.
- 10100.08 ADA ACCESSIBLE PARKING SIGN. ALUMINUM OR FIBERGLASS PLATE; SIGN FIELD IS WHITE, SIGN LETTERING AND BORDERS ARE GREEN. SEE DETAIL A3 / AA-AS-1. LOCATE SIGN CENTERED ON PARKING SPACE AND 1'-8" BACK FROM EDGE OF SIDEWALK. CAST IN CONCRETE SIDEWALK.
- 10100.09 MOTORCYCLE PARKING SIGN. ALUMINUM OR FIBERGLASS PLATE; SIGN FIELD IS WHITE; SIGN LETTERING AND BORDERS ARE GREEN. SEE DETAIL A4 / AA-AS-1. LOCATE SIGN CENTERED PARKING SPACE.
- 31200.01 COMPACTED SUBGRADE AT 95% MIN. SEE GEOTECHNICAL REPORT.



ADDRESS: 5601 UNIVERSITY BLVD. SE ALBUQUERQUE, NM 87105

- THE SITE IS LOCATED WITHIN THE CITY OF ALBUQUERQUE
- IT IS LEASED BY BERNALILLO COUNTY
- IT IS OWNED BY THE STATE OF NEW MEXICO

LEGAL DESCRIPTION: TR 13 BULK LAND PLAT OF MESA DEL SOL TRACTS 1-15CONT

COA ZONING: NR-PO-C - IS PERMISSIVE AS PARKS AND OPEN SPACE, PER IDO A-3(c)(7)(a)
NOTE: DAVID FLORES (DEPUTY DIRECTOR) OF THE COA PARKS AND RECREATION DEPT. SUPPORTS THIS PROJECT.
(PER TABLE 4-2-1 ALLOWABLE USES: THIS FACILITY IS PERMISSIVE)

PARKING REQUIREMENTS PER IDO 14-16-5-5-5:
CLUB OR EVENT FACILITY

PARKING REQUIREMENTS:
1 SPACE / 1,000 GSF OR 1 SPACE / 4 SEATS IN MAIN ASSEMBLY

THEREFORE:
PER BUILDING AREA: 7,971 GSF = 8 SPACES
1000

MAIN ASSEMBLY / TEAM MEETING ROOM = 65 OCCUPANTS

65 = 16.25 = 17 SPACES
4

NOTE: THE LARGER OF THE CALCULATIONS BASED ON BUILDING AREA VS. ASSEMBLY OCCUPANTS WAS USED AS THE MINIMUM NUMBER OF REQUIRED SPACES = 17

VEHICLE PARKING PROVIDED:
13 PARKING SPACES
19 IS GREATER THAN 17, THEREFORE OK.

HANDICAPPED PARKING REQUIREMENTS: 1 SPACE

HANDICAPPED PARKING PROVIDED: 12 SPACES

MOTORCYCLE SPACES REQUIRED: 1 SPACE

MOTORCYCLE SPACES PROVIDED: 1 SPACE

BICYCLE SPACES REQUIRED: 3

BICYCLE SPACES PROVIDED: 3

NO.	DATE	REVISIONS	CHECKED BY:
Δ	4.21.22	REVISIONS	

LEE GAMESKY ARCHITECTS P.C.

2412 MILES ROAD SE
ALBUQUERQUE, NM 87106
505.842.8865 FAX 842.1693
lee@lganm.com

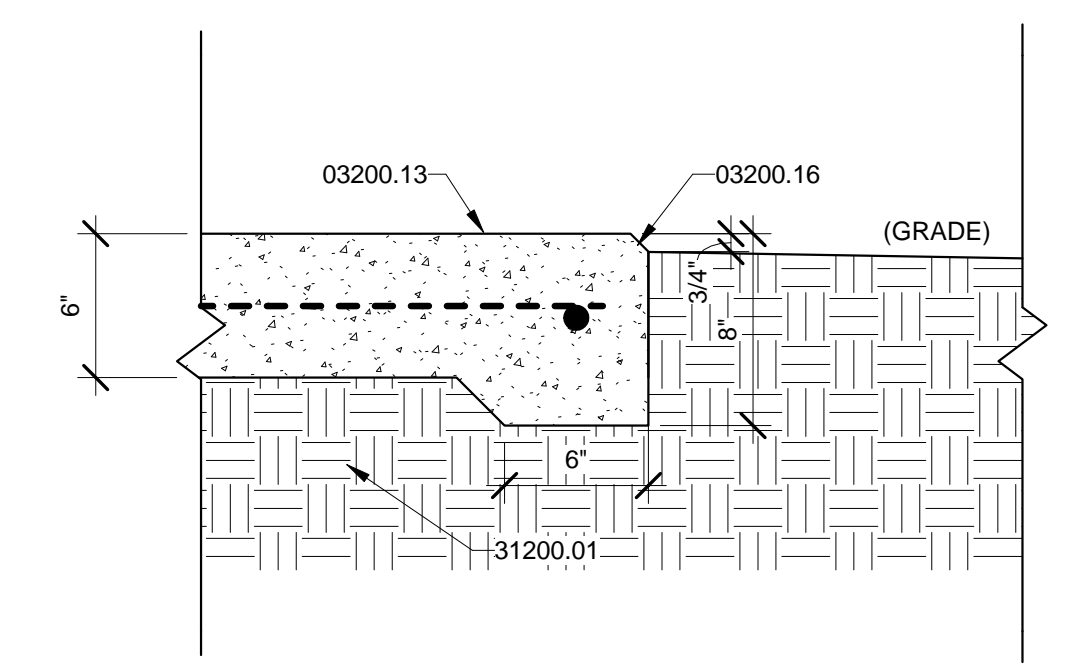
LOCKER ROOM FACILITY AT MDS
Albuquerque, New Mexico

PROJECT ARCHITECT:
LEE GAMESKY, AIA

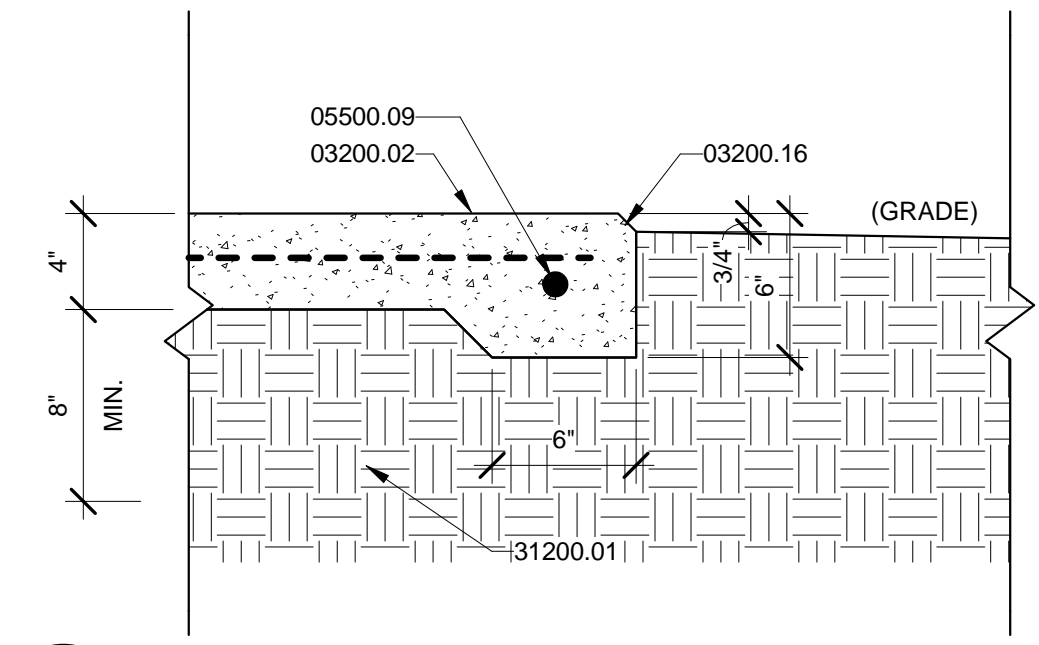
LGA Project #: 20-01-ABQ.7
Date: 4.21.2022

ADMINISTRATIVE AMENDMENT •
OVERALL SITE PLAN
LOCKER ROOM FACILITY AT MDS

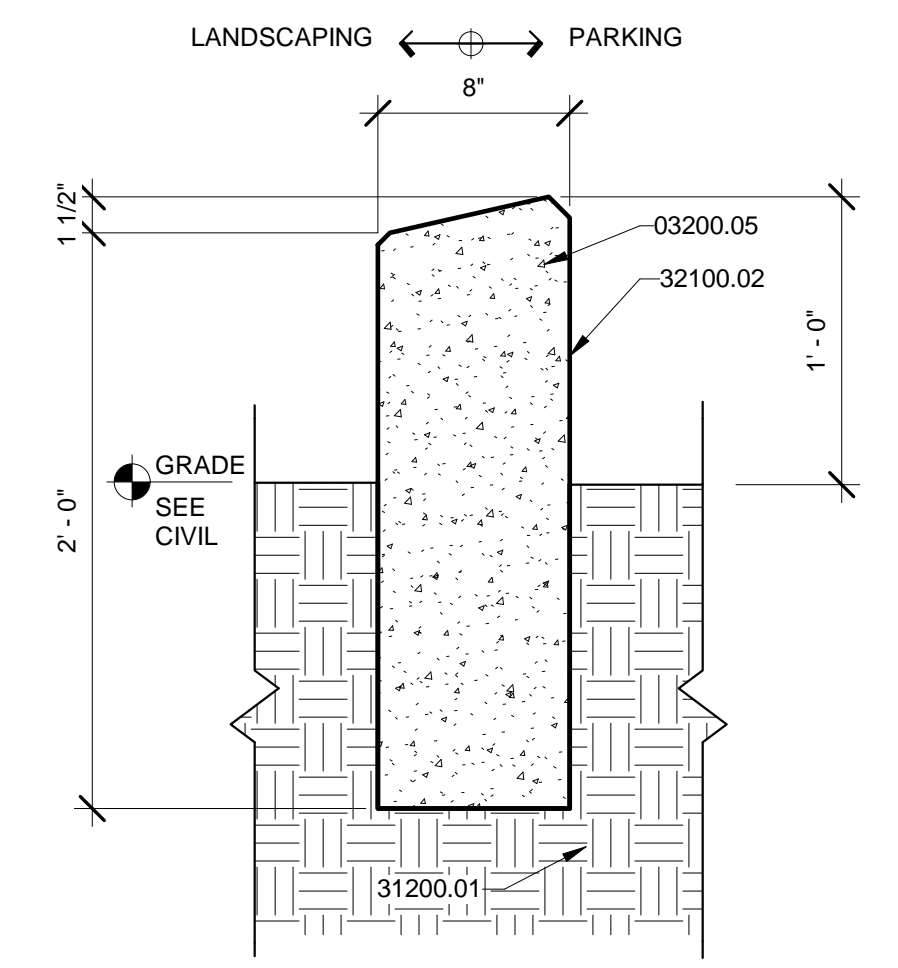
By: _____ Sheet: Of: 81
File: _____ **AA-AS-1**



D1 6" CONCRETE-SIDEWALK EDGE DETAIL
1 1/2" = 1'-0"



D2 CONCRETE SLAB-SIDEWALK EDGE DETAIL
1 1/2" = 1'-0"



D3 HEADER-CURB @ GRADE
1 1/2" = 1'-0"

LEGEND

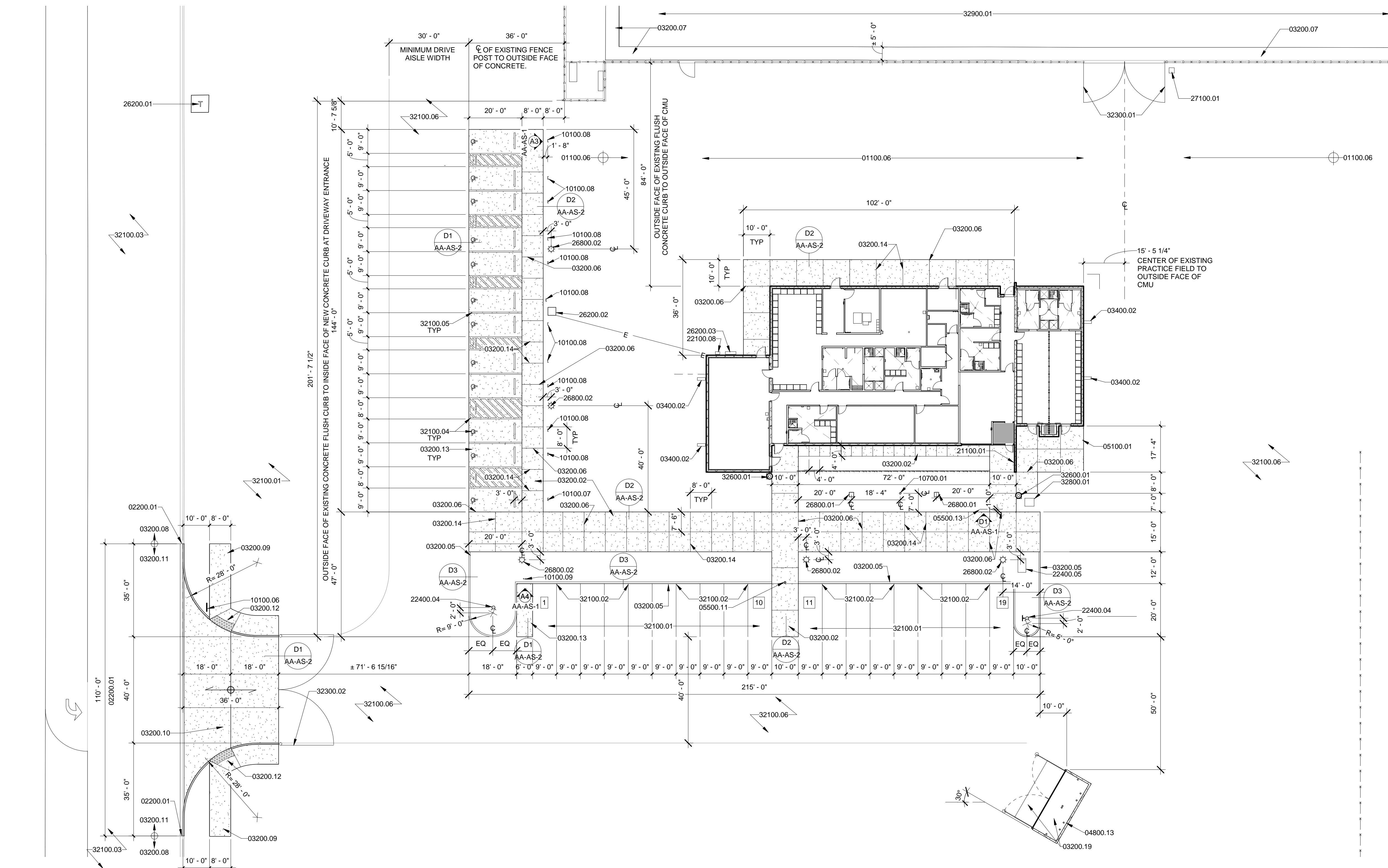
- EXISTING 6'-0" HIGH CHAIN LINK FENCE W/ ROUND POSTS, CENTERED ON 1'-0" WIDE CONCRETE CURB. TO REMAIN.
- EXISTING WIRE FENCE W/ STEEL POSTS. TO REMAIN.

GENERAL NOTES

- A. EXTERIOR LIGHTS AND LIGHT POLES SHALL BE INSTALLED NO TALLER THAN 18' ABOVE GRADE. LIGHT FIXTURES SHALL COMPLY WITH THE NIGHT SKY ORDINANCE, AND SHALL COMPLY WITH THE REQUESTS OF KIRTLAND AFB AND/ OR THE DEPARTMENT ON ENERGY.

KEYED NOTES

- 01100.06 FUTURE BLEACHER LOCATION. NOT PART OF THIS CONTRACT.
- 02200.01 SAWCUT/ REMOVE EXISTING CURB AND GUTTER FOR NEW CURB CUT.
- 03200.02 4" THICK, 4000 PSI, AIR-ENTRAINED CONCRETE SLAB/SIDEWALK REINFORCE WITH #4x12.9/W2.9 WELDED WIRE MESH, FLAT SHEETS ONLY. INSTALL ON CHAIRS CENTERED IN SLAB.
- 03200.05 4000 PSI, AIR-ENTRAINED CAST IN PLACE CONCRETE HEADER CURB MODIFIED CITY OF ALBUQUERQUE STANDARD SPECIFICATION. REFER TO CITY STANDARD DETAIL 2415 B. SEE SITE DETAILS. SEE CIVIL.
- 03200.06 1/2" THICK EXPANSION MATERIAL, WITH POUR IN PLACE SEALANT. ASPHALT IMPREGNATED OR EQUAL. SEE DETAIL D3 / AS-102.
- 03200.07 EXISTING CONCRETE PAD/ SIDEWALK, TO REMAIN.
- 03200.08 EXISTING CONCRETE CURB AND GUTTER, TO REMAIN.
- 03200.09 CONCRETE SIDEWALK PER CITY OF ALBUQUERQUE STANDARD SPECIFICATIONS. REFER TO CITY STANDARD DETAIL DWG. 2430. SEE CIVIL.
- 03200.10 CONCRETE PAVING PER CITY OF ALBUQUERQUE STANDARD SPECIFICATION. REFER TO CITY STANDARD DETAIL 2426 FOR PRIVATE ENTRANCE. SEE CIVIL.
- 03200.11 NEW CONCRETE CURB AND GUTTER PER CITY OF ALBUQUERQUE STANDARD SPECIFICATION. REFER TO CITY STANDARD DETAIL 2415. SEE CIVIL.
- 03200.12 CONCRETE ACCESSIBLE SIDEWALK RAMP WITH TRUNCATED DOMES. PER CITY OF ALBUQUERQUE STANDARD SPECIFICATION. REFER TO COA STANDARD DWGS. 2440 AND 2441. SEE CIVIL.
- 03200.13 6" THICK, 4000 PSI, AIR-ENTRAINED CONCRETE SLAB. REINFORCE W/ NO.4 REBAR @ 16" O.C. EACH WAY.
- 03200.14 1" DEEP X 3/8" WIDE CONCRETE CONTROL JOINT. SPACED 5'-0" APART, OR AS INDICATED ON PLAN. SEE DETAIL D3/ AS-102.
- 03200.16 CHAMFER OUTSIDE EDGE 3/4", TYPICAL.
- 03200.19 6" THICK, 4000 PSI, AIR-ENTRAINED CONCRETE SLAB W/ 3/4" AGGREGATE. REINFORCE W/ 6X6 10/10 WELDED WIRE MESH.
- 03400.02 12" X 36" PRE CAST CONCRETE SPLASH BLOCK. PROVIDE AT INDICATED DOWNLEADER LOCATIONS.
- 04800.13 8" X 8" X 16" CMU BLOCK, SPLIT FACE GRAY COLOR BLOCK (SINGLE SIDED EXTERIOR SPLIT FACE), REINFORCED CMU WALL W/ NO.5 REBAR @ 16" O.C. VERTICAL. GROUT ALL CELL SOLID. PROVIDE (2) NO.5 IN KNOCK OUT BOND BEAMS @ 48" O.C. HORIZONTAL.
- 05100.01 STEEL COLUMN. PRIME AND PAINT AT EXPOSED LOCATIONS. SEE STRUCTURAL.
- 05500.09 NO. 4 REBAR CONTINUOUS.
- 05500.11 8"Ø X 6'-0" TALL STEEL PIPE, CONCRETE FILLED. PRIME AND PAINT.
- 05500.13 2"Ø STEEL PIPE BIKE RACK. SET IN CONCRETE FOOTING. GRIND EDGES SMOOTH. PRIME AND PAINT.
- 10100.06 STOP SIGN (R1-1) AND NO LEFT TURN SIGN (R3-1) PER MUTCD STANDARDS. ALUMINUM OR FIBERGLASS PLATE. SIGN FIELD IS RED, BORDER AND LETTERING ARE WHITE. SEE DETAIL C4 / AS-103.
- 10100.07 PROVIDE "VAN ACCESSIBLE" SIGN AT DESIGNATED LOCATIONS. SEE ENLARGED SITE PLANS.
- 10100.08 ADA ACCESSIBLE PARKING SIGN. ALUMINUM OR FIBERGLASS PLATE. SIGN FIELD IS WHITE, SIGN LETTERING AND BORDERS ARE GREEN. SEE DETAIL A3 / AA-AS-1. LOCATE SIGN CENTERED ON PARKING SPACE AND 1'-8" BACK FROM EDGE OF SIDEWALK. CAST IN CONCRETE SIDEWALK.
- 10100.09 MOTORCYCLE PARKING SIGN. ALUMINUM OR FIBERGLASS PLATE. SIGN FIELD IS WHITE. SIGN LETTERING AND BORDERS ARE GREEN. SEE DETAIL A4 / AA-AS-1. LOCATE SIGN CENTERED PARKING SPACE.
- 10700.01 20" HIGH X 5'Ø BUTT CONE TAPERED ALUMINUM FLAG POLE W/ EXTERNAL HALYARD (23'-0" OVERALL HEIGHT), (MANUFACTURER CONCORD INDUSTRIES, 800.634.4926, OR EQUAL), CONTINENTAL STYLE. INSTALL PER MANUFACTURER'S SPECIFICATIONS. SEE DETAIL D1 / AS-103.
- 21100.01 KNOX BOX INSTALLED RECESSED IN CMU WALL @ 48" A.F.F. GROUT SOLID IN WALL.
- 22100.08 NEW GAS METER. SEE PLUMBING.
- 22400.04 NEW FIRE HYDRANT. SEE CIVIL.
- 22400.05 BACKFLOW PREVENTER INSTALLED IN HOT BOX. SEE CIVIL. SEE PLUMBING. SEE ELECTRICAL.
- 26200.01 EXISTING ELECTRICAL TRANSFORMER. TO REMAIN. SEE ELECTRICAL.
- 26200.02 NEW TRANSFORMER. SEE ELECTRICAL.
- 26200.03 NEW ELECTRICAL PANEL. SEE ELECTRICAL.
- 26800.01 RECESSED LIGHT FIXTURE INSTALLED IN CONCRETE CUBE BOLLARD. LIGHT FIXTURE ILLUMINATES METAL TRELLIS/ FINS STRUCTURE. SEE ELECTRICAL. SEE DETAIL A4 / AS-104.
- 26800.02 LIGHT POLE. SEE ELECTRICAL.
- 27100.01 EXISTING COMMUNICATIONS IN-GROUND QUARTZITE BOX. TO REMAIN.
- 31200.01 COMPACTED SUBGRADE AT 95% MIN. SEE GEOTECHNICAL REPORT.
- 32100.01 EXISTING COMPACTED GRADE TO REMAIN.
- 32100.02 6" WIDE, WHITE PAINT STRIPS ON VERTICAL AND HORIZONTAL SURFACE OF MODIFIED HEADER CURB TO INDICATE PARKING STALL. TYPICAL AT PARKING SPACES ON GRADE.
- 32100.03 EXISTING ASPHALT PAVING, TO REMAIN. SEE CIVIL.
- 32100.04 PROVIDE AND INSTALL PARKING STRIPING, HANDICAP SYMBOL (36" X 36"), AND HANDICAP STRIPING. PROVIDE 6" WIDE X 2'-0" O.C. DIAGONAL PAINT STRIPING. SEE INDICATED LAYOUT. PROVIDE THE WORDS "NO PARKING" IN CAPITAL LETTERS, 1'-0" HIGH LETTERS X 2" WIDE STRIPES LOCATED SO AS TO BE CLOSE TO WHERE ADJACENT VEHICLE'S REAR TIRES WOULD BE PARKED. WHITE PARKING LINES AT REGULAR SPACE, AND BLUE COLOR AT HANDICAPPED SPACES AND ACCESS AISLE.
- 32100.05 PROVIDE 6" WIDE PAINT STRIPING. SEE INDICATED LAYOUT.
- 32100.06 EXISTING COMPACTED GRADE TO REMAIN, CAPABLE OF SUPPORTING 75,000 POUND FIRE APPARATUS VEHICLES. AS REQUIRED PROVIDE ADDITIONAL COMPACTED GRAVEL TO MAINTAIN ALL WEATHER TRAVEL SURFACE.
- 32300.01 EXISTING GATE, TO REMAIN.
- 32300.02 PIPE GATE PER COA STANDARD #2251. SEE CIVIL. PROVIDE KNOX LOCK.
- 32600.01 38 GALLON POWDER COATED STEEL, REFUSE CONTAINER W/ DOMED LID.
- 32800.01 IN-GROUND IRRIGATION VALVE BOX. SEE CIVIL. SEE PLUMBING. SEE ELECTRICAL.
- 32900.01 EXISTING ATHLETIC FIELD W/ TURF. TO REMAIN.



A1 SITE PLAN-AA
1" = 20'-0"

NO.	DATE	REVISIONS	CHECKED BY:
1	4.21.22	REVISIONS	

LEE GAMELSKY ARCHITECTS P.C.

2412 MILES ROAD SE
ALBUQUERQUE, NM 87106
505.842.8865 FAX 842.1693
lee@ganm.com

STATE OF NEW MEXICO
LEE D. GAMELSKY
No. 1933
REGISTERED ARCHITECT

LOCKER ROOM FACILITY AT MDS
Albuquerque, New Mexico

PROJECT ARCHITECT:
LEE GAMELSKY, AIA

ADMINISTRATIVE AMMENDMENT •
SITE PLAN
LOCKER ROOM FACILITY AT MDS

By: _____ Sheet: Of: 81
File: _____ AA-AS-2

LGA Project #: 20-01-ABQ.7
Date: 4.21.2022

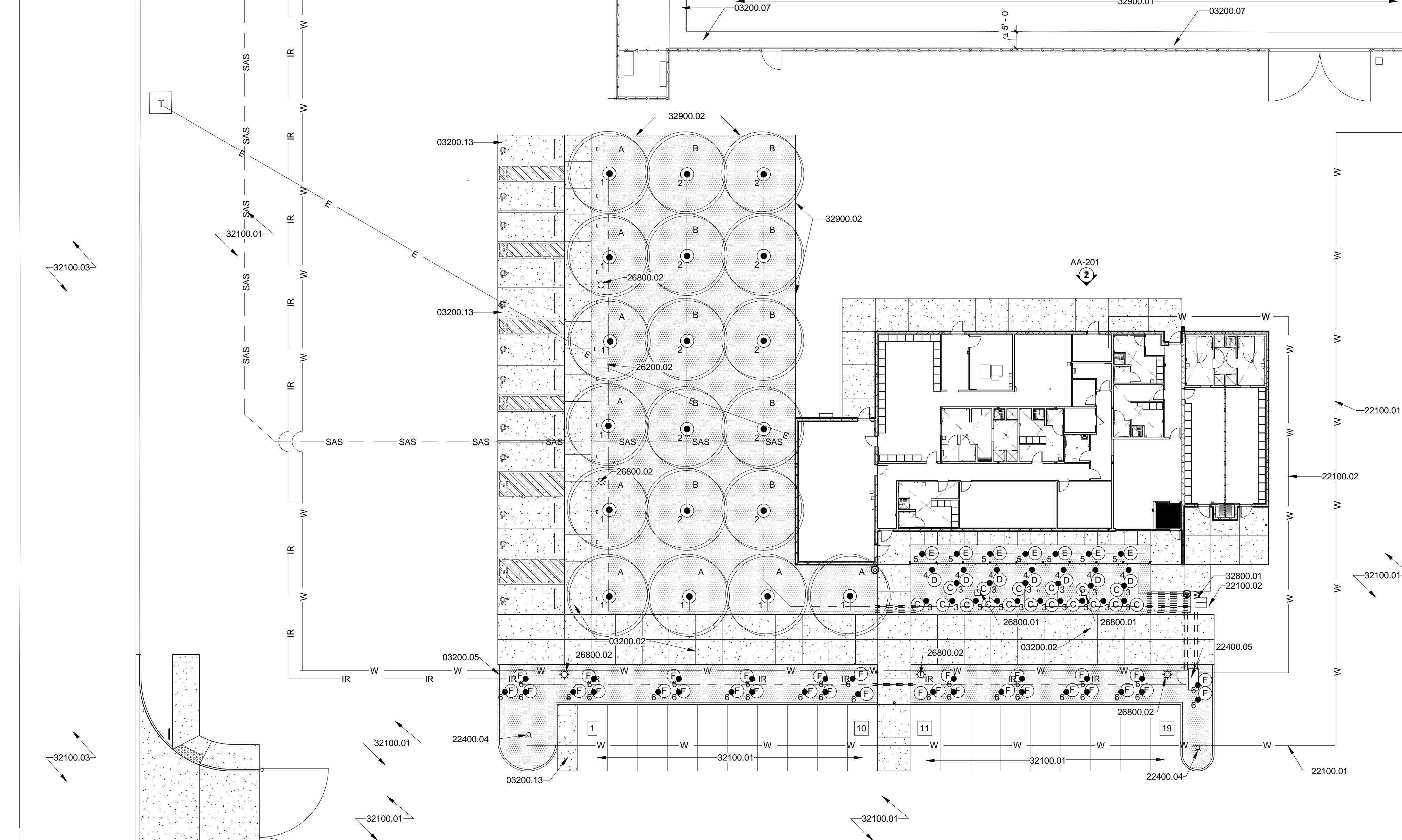
LEGEND

	EXISTING 6"-0" HIGH CHAIN LINK FENCE W/ ROUND POSTS, CENTERED ON 1'-0" WIDE CONCRETE CURB, TO REMAIN.
	EXISTING WIRE FENCE W/ STEEL POSTS, TO REMAIN.
	NEW SANITARY SEWER.
	NEW DOMESTIC WATER LINE.
	NEW IRRIGATION SUPPLY LINE.
	NEW UNDERGROUND ELECTRICAL.

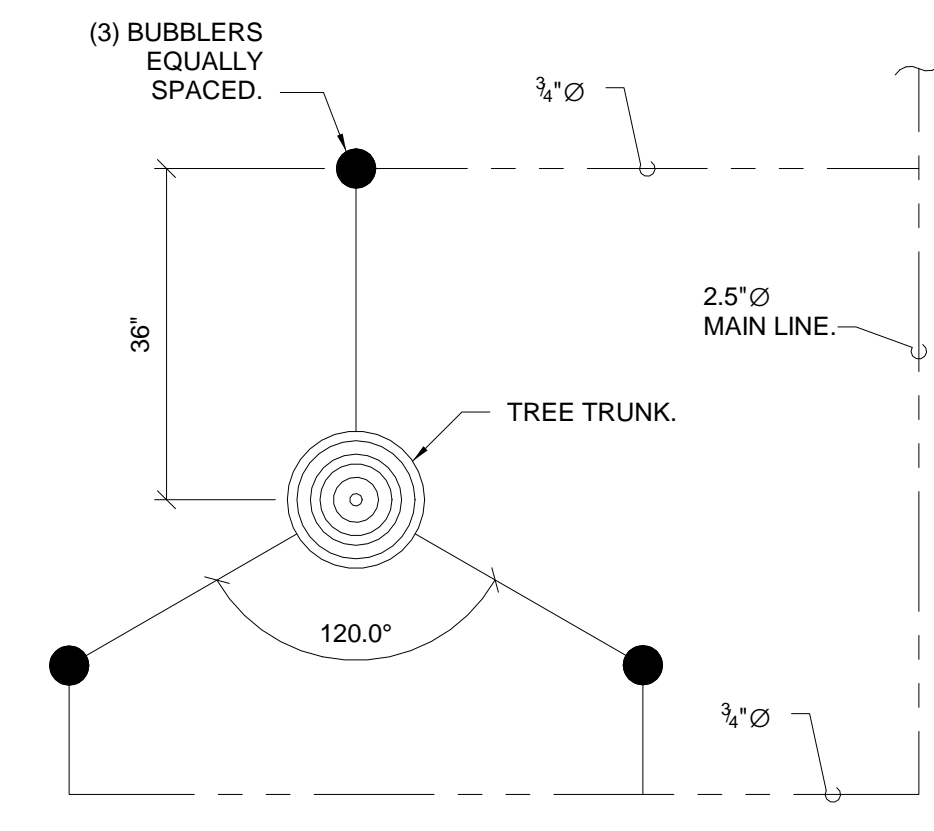
IRRIGATION EQUIPMENT SCHEDULE

GENERAL NOTES • PROVIDE AND INSTALL THE FOLLOWING

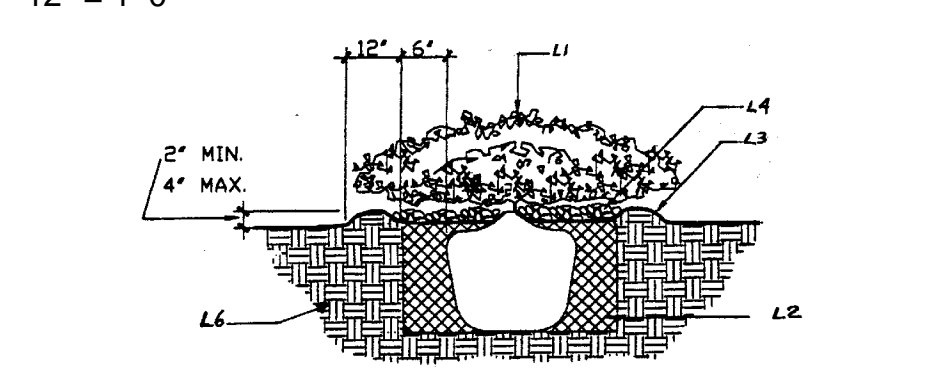
- 1401 (.25 GPM) - ONE (1) BUBBLER PER SHRUB. ZONE NUMBER.
- 1402 (.5 GPM) - THREE (3) BUBBLERS PER TREE PER DETAIL 1/L-501 ZONE NUMBER.
- IRRIGATION MAINLINE, SCHEDULE 40 PVC, SOLVENT WELD, SIZE 2.5", 18" DEPTH, EXCEPT WHERE INDER CONTINUOUS PRESSURE, 30" DEPTH.
- ==== SLEEVING: CLASS 200 PVC (2 SIZES LARGER THAN PIPE TO BE SLEEVED).
- AIR RELEASE VALVE: BERHAD #01-ARA-P, 1" AIR RELEASE VALVE ASSEMBLY.
- DECODER SURGE PROTECTION: RAIN BIRD #LSP.1 LINE SURGE PROTECTOR GROUNDED WITH 5/8" COPPER CLAD GROUND ROD.
- AUTOMATIC VALVE ASSEMBLY: RAIN BIRD PEB.
- CONTROLLER: RAINBIRD #ESPLXD-LXMPED 6 STATION IRRIGATION CONTROLLER (DECODER). INSTALL INSIDE OF BUILDING.



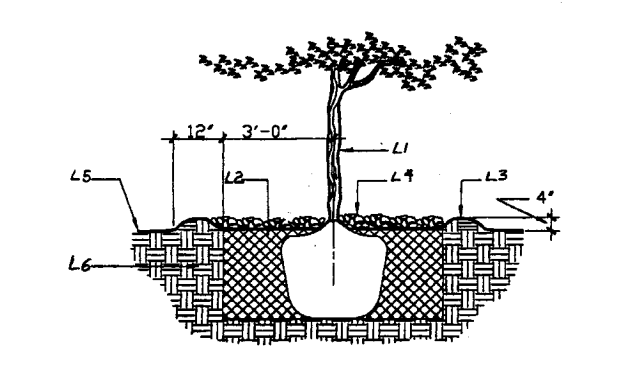
LANDSCAPE PLAN-AA
1" = 20'-0"



BUBBLER DETAIL • TREE
12" = 1'-0"



SHRUB PLANTING DETAIL



TREE PLANTING DETAIL

GENERAL NOTES

FOR PLANTING DETAILS

- AA. AT SHRUBS AND SMALL PLANTS: THE OUTSIDE DIAMETER OF THE EXCAVATION SHALL BE TWICE THE DIAMETER OF THE SHRUB PLANTING PIT.
- BB. AT TREES: ROOT BALL SHALL BE PLACED ON UNDISTURBED SOIL TO PREVENT TREE FROM SETTLING.
- CC. AT TREES: TOP OF ROOT BALL INDICATES LEVEL AT WHICH TREE WAS GROWN AND DUG, THIS REPRESENTS THE LEVEL AT WHICH THE TREE SHOULD BE INSTALLED; THAT LEVEL MAY BE EXCEEDED BY ONLY A ONE INCH LAYER OF SOIL.
- DD. AT TREES: PRIOR TO BACK FILLING TREE, ALL WIRE, ROPE AND SYNTHETIC MATERIALS SHALL BE REMOVED FROM THE TREE AND THE PLANTING PIT.
- EE. AT TREES: PRIOR TO BACK FILLING ALL BURLAP SHALL BE CUT AWAY EXCEPT FROM THE BOTTOM OF ROOT BALL.

KEYED NOTES

FOR PLANTING DETAILS

- L1. TREE OR SHRUB: SEE PLAN FOR SIZE, SPECIES AND LOCATION.
- L2. BACK FILL WITH EXISTING SOIL.
- L3. EARTH BERM AROUND WATER RETENTION BASINS.
- L4. 4" DEPTH OF MULCH.
- L5. FINISH GRADE. SEE PLAN FOR MULCH.
- L6. UNDISTURBED SOIL.

GENERAL IRRIGATION NOTES

1. THE SYSTEM DESIGN ASSUMES A MINIMUM STATIC PRESSURE OF 75 PSI AT THE POINT-OF-CONNECTION. THE IRRIGATION CONTRACTOR SHALL VERIFY PRESSURE AND FLOW ON SITE PRIOR TO CONSTRUCTION.
2. ALL IRRIGATION COMPONENTS SHALL BE INSTALLED IN ACCORDANCE WITH COA SECTION 1001-LANDSCAPE IRRIGATION SYSTEM, AND REFERENCED DETAILS CONTAINED WITHIN THE CITY OF ALBUQUERQUE STANDARD SPECIFICATIONS MANUAL, LATEST EDITION.
3. SEE CITY OF ALBUQUERQUE STANDARD DETAILS FOR LANDSCAPING, SECTION 2700: DWG. NO. 2700 RPBB MASTER VALVES W/ RPBB DWG. NO. 2701 MASTER VALVE W/ PVB DWG. NO. 2702-A PVB W/ MV DWG. NO. 2704 IRRIGATION VALVE ASSEMBLY DWG. NO. 2705 BUBBLER AT TREE DWG. NO. 2711-A BUBBLER DWG. NO. 2712 BUBBLER
4. THE IRRIGATION CONTRACTOR SHALL BECOME THOROUGHLY FAMILIAR WITH THE SPECIFICATIONS FOR THIS AND RELATED WORK PRIOR TO CONSTRUCTION. THE IRRIGATION CONTRACTOR SHALL DETERMINE THE EXACT LOCATION OF UNDERGROUND UTILITIES AND ELECTRICAL WIRING PRIOR TO CONSTRUCTION. THE IRRIGATION CONTRACTOR SHALL NOT INSTALL THE SPRINKLER SYSTEM WHEN IT IS OBVIOUS IN THE FIELD THAT OBSTRUCTIONS OR GRADE DIFFERENCES EXIST THAT MIGHT NOT HAVE BEEN CONSIDERED IN THE ENGINEERING, OR IF THE DISCREPANCIES IN CONSTRUCTION DETAILS, LEGEND, NOTES, OR SPECIFICATIONS ARE DISCOVERED. ALL SUCH OBSTRUCTIONS OR DISCREPANCIES SHALL BE BROUGHT TO THE ATTENTION OF THE OWNER'S REPRESENTATIVE.
5. THE IRRIGATION CONTRACTOR SHALL AVOID ANY CONFLICTS BETWEEN THE IRRIGATION SYSTEM, PLANTING MATERIALS, AND ABOVE GROUND UTILITIES. IRRIGATION PIPE AND WIRING SHALL BE INSTALLED IN LANDSCAPED AREAS WHENEVER POSSIBLE.
6. GENERAL CONTRACTOR IS RESPONSIBLE FOR INSTALLATION OF SLEEVES AS INDICATED ON THE DRAWING. EXTEND SLEEVES 2' BEYOND BACK OF CURB AND CAP UNTIL CONTRACTOR IS READY TO BEGIN THE INSTALLATION OF SPRINKLER SYSTEM. STAKE LOCATION OF SLEEVE WITH T-POSTS AND FLAGS.
7. THE CONTRACTOR SHALL INSTALL RAINBIRD DECODER SYSTEM WITH SATELLITE COMPATIBLE WITH COA RAINBIRD CENTRAL IQ SYSTEM. ALL COMMUNICATION CABLE SHALL BE THOROUGHLY GROUNDED AND GROUND TESTED TO MEET ALL REQUIREMENTS OF THE MANUFACTURER. INSTALL COMMUNICATION CABLE ACCESS BOXES AT ALL BRANCHES ON MAINLINE PIPING. INSTALL COMMUNICATION CABLE ALONG ALL PATHS OF THE MAINLINE PIPING STRUCTURE. ALL SPLICES MUST BE HOUSED IN A VALVE BOX. USE ONLY MANUFACTURER RECOMMENDED SPLICE KITS. CONTRACTOR SHALL PROVIDE 2 YEAR EXTENDED MAINTENANCE FOR IRRIGATION SYSTEM FROM THE DATE OF SUBSTANTIAL COMPLETION.

GENERAL NOTES

- A. PRIOR TO BEGINNING WORK ON THE PROJECT, THE LANDSCAPE CONTRACTOR SHALL REVIEW THE PROJECT IN THE FIELD WITH THE OWNER'S REPRESENTATIVE. IF DISCREPANCIES OCCUR BETWEEN THE DRAWINGS AND THE SITE, THE LANDSCAPE CONTRACTOR SHALL NOTIFY THE OWNER'S REPRESENTATIVE FOR CLARIFICATION PRIOR TO PROCEEDING ON THAT PORTION OF WORK.
- B. ALL PLANTING AREAS ARE TO HAVE WEEDS AND COMPETITIVE VEGETATION REMOVED PRIOR TO PREPARATION FOR PLANTING. THE OWNER'S REPRESENTATIVE SHALL APPROVE ALL PLANT MATERIAL PRIOR TO PLANTING. IN ADDITION, THE OWNER REPRESENTATIVE RESERVES THE RIGHT TO REFUSE ANY PLANT MATERIAL DEEMED UNACCEPTABLE. THE OWNER'S REPRESENTATIVE IS TO APPROVE ANY AND ALL SUBSTITUTIONS.
- C. IT IS THE LANDSCAPE CONTRACTOR'S RESPONSIBILITY TO LOCATE ALL UNDERGROUND UTILITIES PRIOR TO COMMENCEMENT OF PLANTING OPERATIONS.
- D. PLANTING INSTALLATION SHALL BE IN ACCORDANCE WITH ALL CITY OF ALBUQUERQUE STANDARD SPECIFICATIONS (SECTION 1005 - PLANTING) AND DETAILS.
- E. CONTRACTOR SHALL PROVIDE 2 YEARS OF EXTENDED MAINTENANCE OF ALL LANDSCAPE AREAS FROM THE DATE OF SUBSTANTIAL COMPLETION.
- F. SEE SHEET G-002 FOR CODE DATA/ LANDSCAPING REQUIREMENTS.
- G. SEE CITY OF ALBUQUERQUE STANDARD DETAILS FOR LANDSCAPING SECTION 2700: DWG. NO. 2714 TREE PLANTING DWG. NO. 2716 SHRUB PLANTING

KEYED NOTES

- 03200.02 4" THICK, 4000 PSI, AIR-ENTRAINED CONCRETE SLAB/SIDEWALK REINFORCE WITH #4xW2.9W2.9 WELDED WIRE MESH, FLAT SHEETS ONLY. INSTALL ON CHAIRS CENTERED IN SLAB.
- 03200.05 4000 PSI, AIR-ENTRAINED CAST IN PLACE CONCRETE HEADER CURB MODIFIED CITY OF ALBUQUERQUE STANDARD SPECIFICATION. REFER TO CITY STANDARD DETAIL 2415 B.
- 03200.07 EXISTING CONCRETE PAD/ SIDEWALK, TO REMAIN.
- 03200.13 6" THICK, 4000 PSI, AIR-ENTRAINED CONCRETE SLAB. REINFORCE W/ NO.4 REBAR @ 16" O.C. EACH WAY.
- 22100.01 6"Ø WATER SUPPLY FOR FIRE HYDRANTS.
- 22100.02 WATER SUPPLY.
- 22400.04 NEW FIRE HYDRANT.
- 22400.05 BACKFLOW PREVENTER INSTALLED IN HOT BOX.
- 26200.02 NEW TRANSFORMER.
- 26800.01 RECESSED LIGHT FIXTURE INSTALLED IN CONCRETE CUBE BOLLARD. LIGHT FIXTURE ILLUMINATES METAL TRELIS/ FINS STRUCTURE.
- 26800.02 LIGHT POLE.
- 32100.01 EXISTING COMPACTED GRADE TO REMAIN.
- 32100.03 EXISTING ASPHALT PAVING, TO REMAIN.
- 32800.01 IN-GROUND IRRIGATION VALVE BOX.
- 32900.01 EXISTING ATHLETIC FIELD W/ TURF, TO REMAIN.
- 32900.02 4" HIGH METAL EDGING, MINIMUM. STAKE AS REQUIRED.

LANDSCAPE SCHEDULE

SYMBOL	BOTANICAL NAME	COMMON NAME	QTY	SIZE	REMARKS
	ULMUS PROPINQUA 'JFS-BIEBERICH'	EMERALD SUNSHINE ELM (M)	9	2.5"Ø	
	GLEITSIA TIACANTHOS 'SKYLINE'	SKYLINE HONEYLOCUST (M+)	9	2.5"Ø	
	NEPETA HYBRID 'WALKER'S LOW'	WALKER'S LOW CATMINT (L+)	17	1 GAL.	
	SALVIA GREGGII 'FURMAN'S RED'	FURMAN'S RED CHERRY SAGE (L+)	7	3 GAL.	
	POTENTILLA FUTICOSA 'JACKMANI'	JACKMAN'S SHRUBBY CINQUEFOIL (M+)	7	5 GAL.	
	CALAMOGROSTIS A. 'KARL FOERSTER'	KARL FOERSTER FEATHER REED GRASS (M)	32	5 GAL.	
	SUPPLIER: JPR GRAVEL NM (BASIS OF DESIGN) (505.503.7766)	BLACK CRUSHER FINES			4" THICK. ROLLED. INSTALL OVER GEOTEXTILE FABRIC, OVER COMPACTED GRADE TO 95%.

NO.	DATE	REVISIONS	CHECKED BY:

LEE GAMESKY ARCHITECTS P.C.

2412 MILES ROAD SE
ALBUQUERQUE, NM 87106
505.842.8865 FAX 842.1693
lee@ganm.com

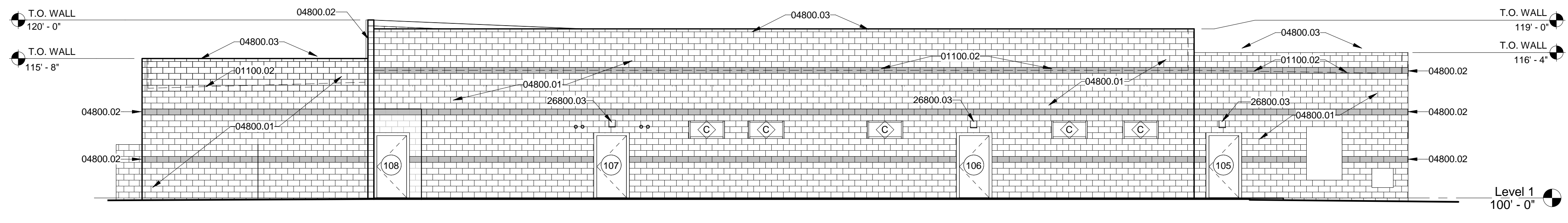
LOCKER ROOM FACILITY AT MDS
Albuquerque, New Mexico

PROJECT ARCHITECT: LEE GAMESKY, AIA
Date: 3.25.2022

LGA Project #: 20-01-ABQ.7

ADMINISTRATIVE AMMENDMENT • LANDSCAPE PLAN
LOCKER ROOM FACILITY AT MDS

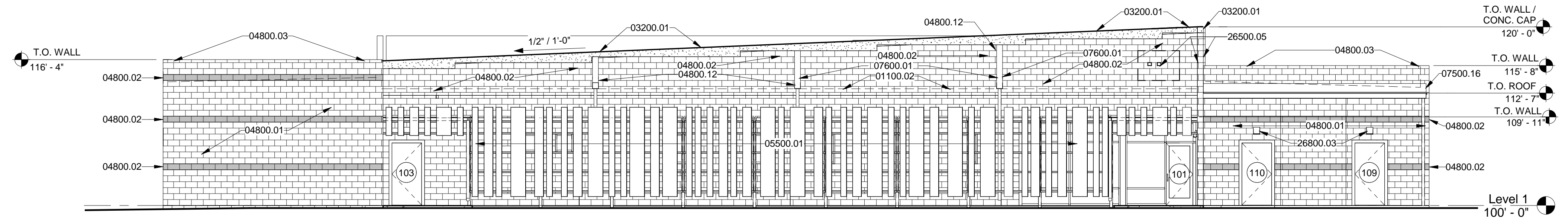




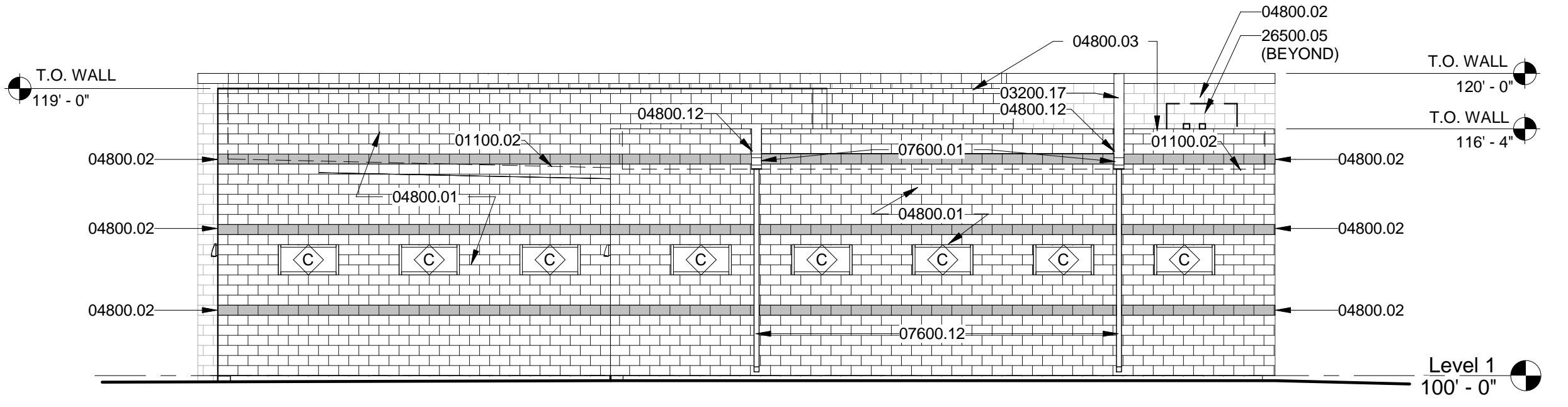
EAST ELEVATION-AA
1/8" = 1'-0"

KEYED NOTES

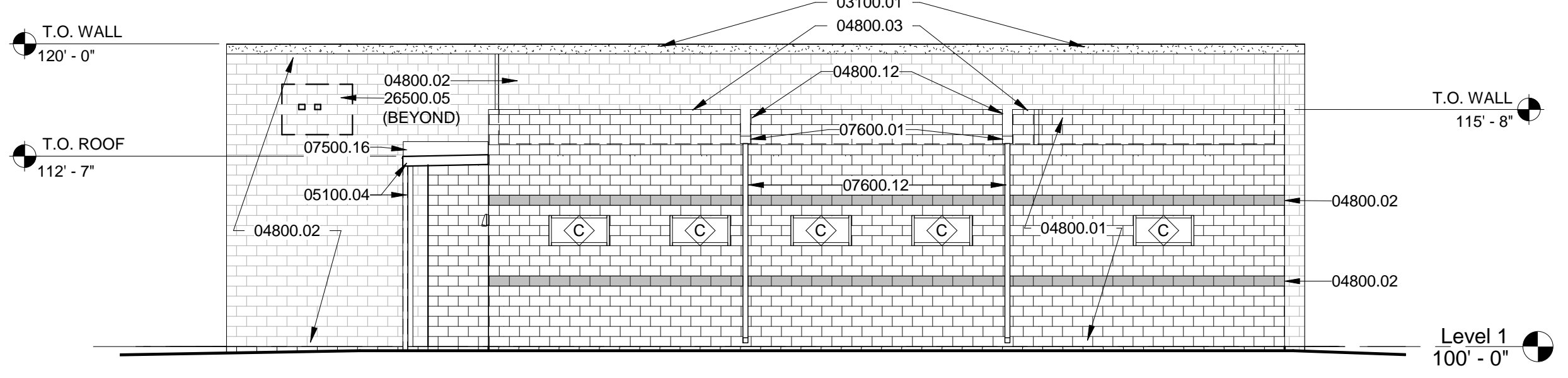
- 01100.02 DASHED LINE INDICATES TOP OF ROOF MEMBRANE BEYOND.
- 03200.01 CAST-IN-PLACE CONCRETE CAP, INTEGRAL COLOR BLACK.
- 03200.17 CAST-IN-PLACE CONCRETE CAP, INTEGRAL COLOR BLACK. SLOPED AT THIS LOCATION.
- 04800.01 8" X 8" X 16" CMU BLOCK. SPLIT FACE GRAY COLOR BLOCK.
- 04800.02 8" X 8" X 16" CMU BLOCK. BURNISHED FACE ON THE EXTERIOR AND EXPOSED INTERIOR SURFACES. INTEGRAL COLOR BLACK BLOCK. PROVIDE INTEGRAL COLOR BLACK MORTAR.
- 04800.03 4" X 8" X 16" CMU CAP BLOCK, STANDARD GREY COLOR BLOCK
- 04800.12 THE CMU WALL, CAP BLOCK AND CAST IN PLACE CONCRETE CAP, STOPS AT THE THROUGH WALL SCUPPER, SUCH THAT SCUPPER IS OPEN TO THE SKY ABOVE. PROVIDE 8" WIDE OPENING.
- 05100.04 STEEL PORTAL STRUCTURE. COLUMNS / BEAMS / ANGLES, STEEL SHEETING, ETC. PRIME AND PAINT BLACK.
- 05500.01 VERTICAL 16 GA STEEL PANELS, 10'-0" LONG, WELDED TO TUBE STEEL PORTAL STRUCTURE. PRIME AND PAINT YELLOW.
- 07500.16 VERTICAL TERMINATION BAR W/ SEALANT ON CMU WALL WHERE ROOF EDGE IS LOCATED.
- 07600.01 THROUGH WALL SCUPPER/ OVERFLOW SCUPPER, COLLECTOR BOX SMOGNA STYLE FIG. 1-25F. DOWNLEADER, FLASHING, TRIM, ETC. 24 GA. PREFINISHED KYNAR BLACK COLOR.
- 07600.12 DOWNSPOUT AT ROOF SCUPPERS. 4"X4" X 24 GA. GALVANIZED METAL. PREFINISHED KYNAR PVDF FINISH, MATT BLACK. PROVIDE DOWNSPOUT HANGERS @ 6'-0" O.C. MAX. INSTALL PER SMOGNA FIG. 1-35A, FABRICATE FROM 1/16" X 1" FLAT STOCK. MATCH DOWNSPOUT FINISH.
- 26500.05 SIGN (3) LOCATIONS. PROVIDED AND INSTALLED BY TENANT. ROUGH-IN ELECTRICAL AND CONTROL J-BOXES AND CONDUIT @ 16'-0" A.F.F.
- 26800.03 WALL MOUNTED LIGHT FIXTURE.



WEST ELEVATION-AA
1/8" = 1'-0"



NORTH ELEVATION-AA
1/8" = 1'-0"



SOUTH ELEVATION-AA
1/8" = 1'-0"

NO.	DATE	REVISIONS	CHECKED BY:

LEE GAMELSKY ARCHITECTS P.C.

2412 MILES ROAD SE
ALBUQUERQUE, NM 87106
505.842.8865 FAX 842.1693
lee@lganm.com

LOCKER ROOM FACILITY AT MDS
Albuquerque, New Mexico

PROJECT ARCHITECT:
LEE GAMELSKY, AIA

LGA Project #: 20-01-ABQ.7
Date: 3.25.2022

ADMINISTRATIVE AMENDMENT •
EXTERIOR ELEVATIONS
LOCKER ROOM FACILITY AT MDS