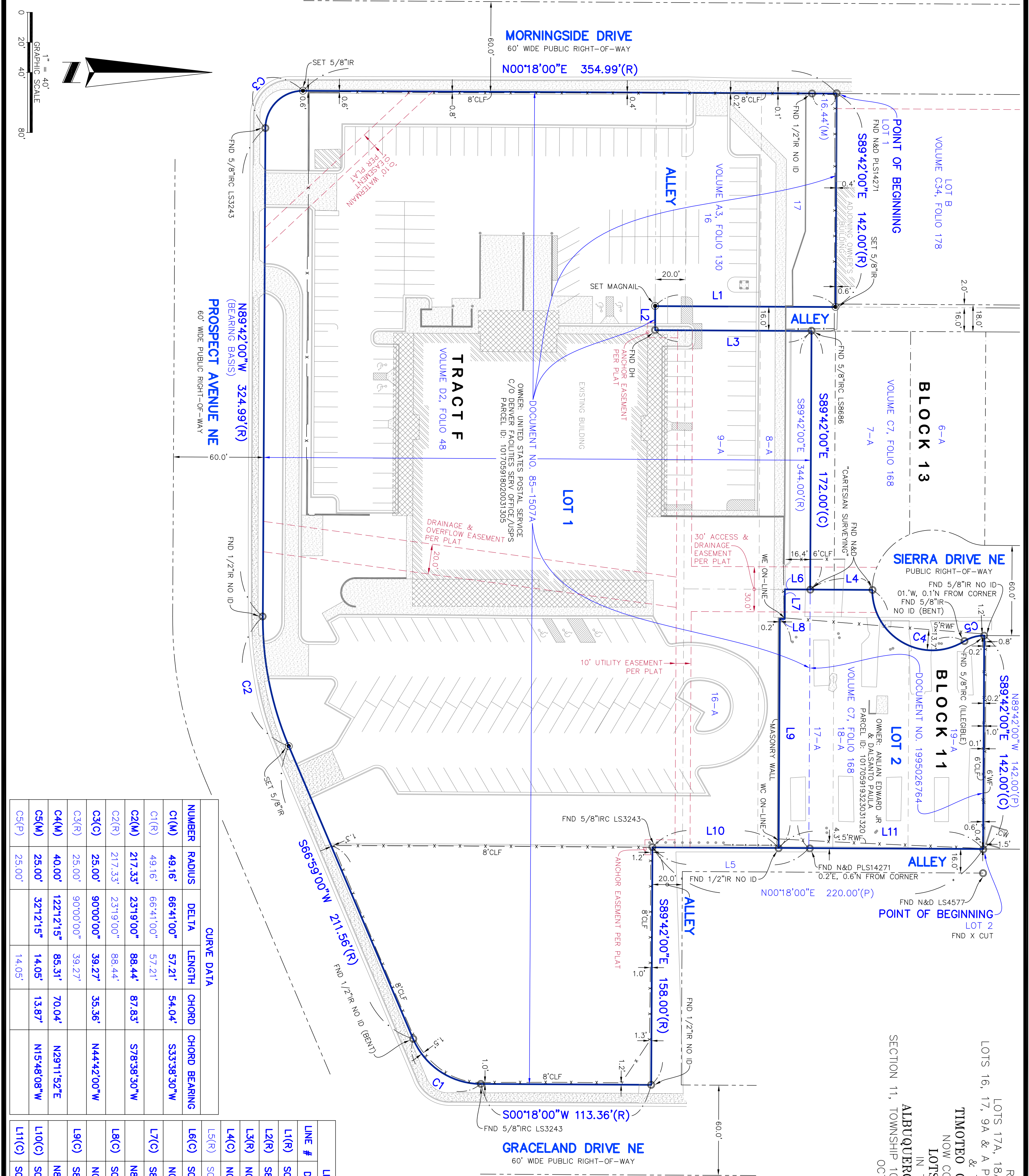


REPLAT OF  
 LOTS 17A, 18A & 19A IN BLOCK 11,  
 & TRACT F OF  
**TIMOTEO CHAVEZ ADDITION**  
 NOW COMPROMISING OF  
 LOTS 1, 2 & 3  
 IN THE CITY OF  
**ALBUQUERQUE, NEW MEXICO**  
 SECTION 11, TOWNSHIP 10 NORTH, RANGE 3 EAST N.M.P.M.  
 OCTOBER 2019



- LEGEND & ABBREVIATIONS**
- CONCRETE SURFACE
  - NO PARKING AREA
  - OVERHANG AREA
  - BOLLARD
  - MONUMENT AS NOTED
  - SET MONUMENT AS NOTED
  - FENCE LINE
  - PER DOCUMENT NO. 85-1507A
  - PLAT
  - VOLUME C7, PAGE 168
  - CALCULATED
  - MEASURED
  - FND FOUND
  - IRC IRON ROD
  - IRON ROD WITH CAP
  - N&D NAIL & DISC
  - DH DRILL HOLE
  - CLF CHAIN-LINK FENCE
  - WF WOOD FENCE
  - RWF RAIL-WIRE FENCE
  - WC WALL EDGE
  - WC WALL CORNER
  - CW CONCRETE WALL

**CURVE DATA**

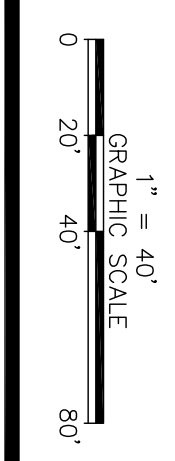
NUMBER	RADIUS	DELTA	LENGTH	CHORD	CHORD BEARING
C1(M)	49.16'	66°41'00"	57.21'	54.04'	S33°38'30"W
C1(R)	49.16'	66°41'00"	57.21'	57.21'	
C2(M)	217.33'	23°19'00"	88.44'	87.83'	S78°38'30"W
C2(R)	217.33'	23°19'00"	88.44'	88.44'	
C3(C)	25.00'	90°00'00"	39.27'	35.36'	N44°42'00"W
C3(R)	25.00'	90°00'00"	39.27'	39.27'	
C4(M)	40.00'	122°12'15"	85.31'	70.04'	N29°11'52"E
C4(R)	40.00'	122°12'15"	85.31'	85.31'	
C5(M)	25.00'	32°12'15"	14.05'	13.87'	N15°48'08"W
C5(R)	25.00'	32°12'15"	14.05'	14.05'	

**LINE TABLE**

LINE #	DIRECTION	LENGTH
L1(R)	S00°18'00"W	120.00'
L2(R)	S89°42'00"E	16.00'
L3(R)	N00°18'00"E	104.05'
L4(C)	N00°18'00"E	41.31'
L5(R)	S00°18'00"W	104.05'
L6(C)	S00°18'00"W	16.82'
L7(C)	S89°42'00"E	19.64'
L8(C)	S00°18'00"W	3.25'
L9(C)	N00°18'00"E	3.25'
L10(C)	N89°42'00"W	152.36'
L11(C)	S00°18'00"W	83.98'
L12(C)	S00°18'00"W	136.02'

**ASM AMERICAN SURVEYING & MAPPING, INC.**  
 3191 MAGUIRE BLVD., SUITE 200 ORLANDO, FLORIDA 32803  
 PHONE (407) 426-7979 WWW.ASMCORPORATE.COM

SCALE: 1" = 40'  
 DATE OF SURVEY: 10-21-2019  
**SHEET 2 OF 2**



© 2019, AMERICAN SURVEYING & MAPPING, INC. ALL RIGHTS RESERVED. REPRODUCTION OR COPYING OF THIS DOCUMENT MAY BE A VIOLATION OF COPYRIGHT LAW UNLESS PERMISSION OF THE AUTHOR AND/OR COPYRIGHT HOLDER IS OBTAINED.