

# ADMINISTRATIVE AMENDMENT

FILE #: \_\_\_\_\_ PROJECT #: \_\_\_\_\_

---

---

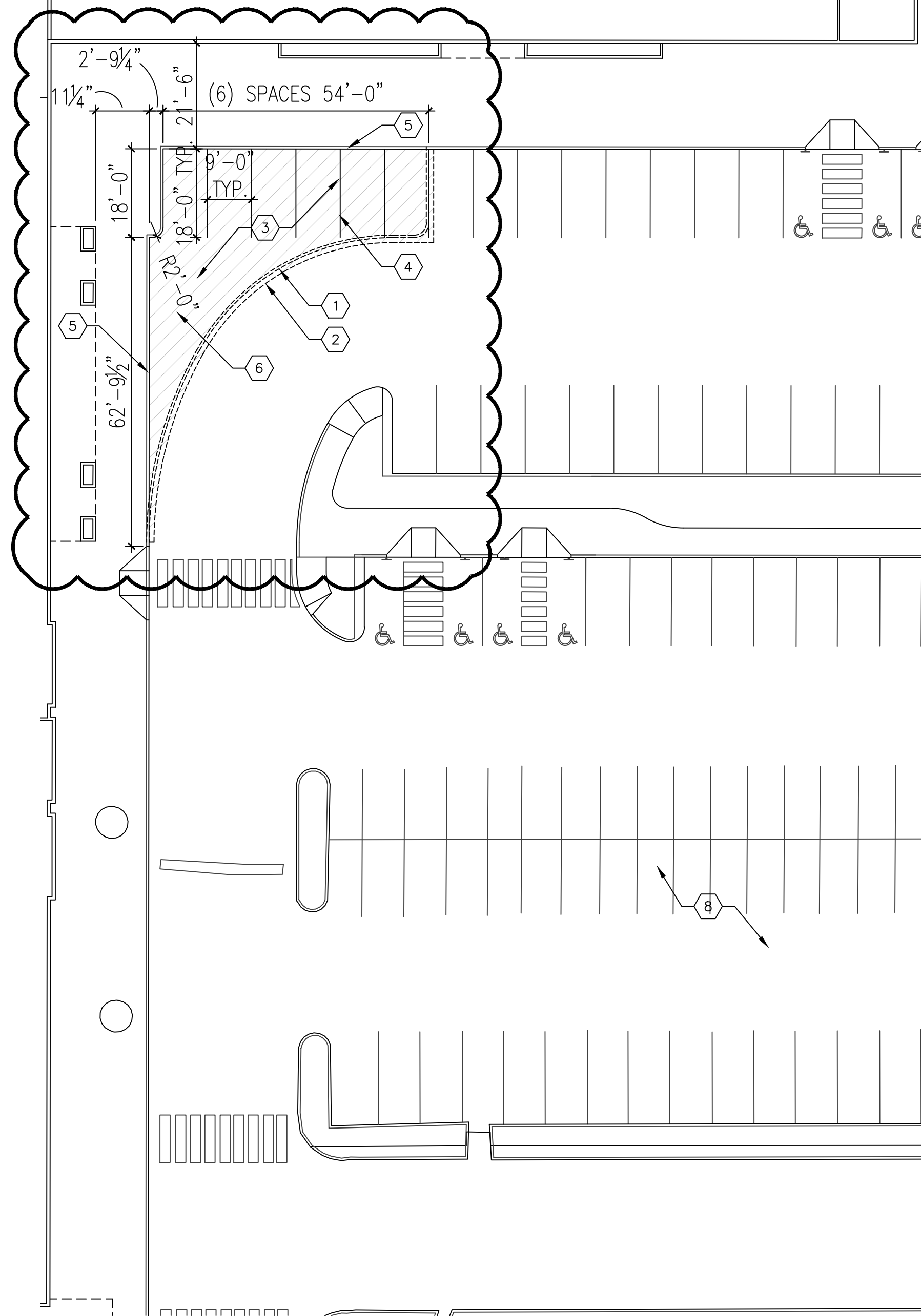
---

---

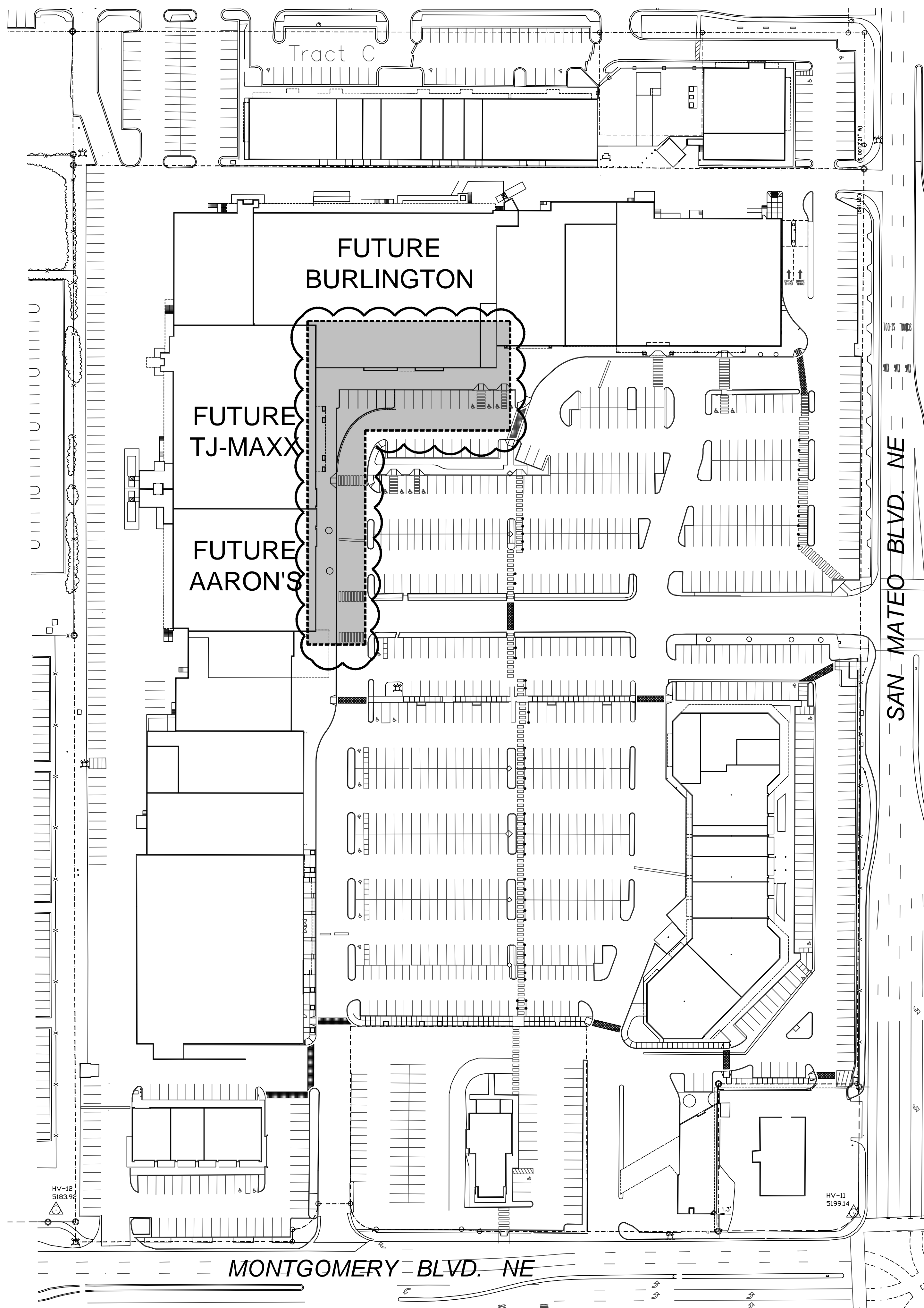
---

\_\_\_\_\_  
**APPROVED BY**

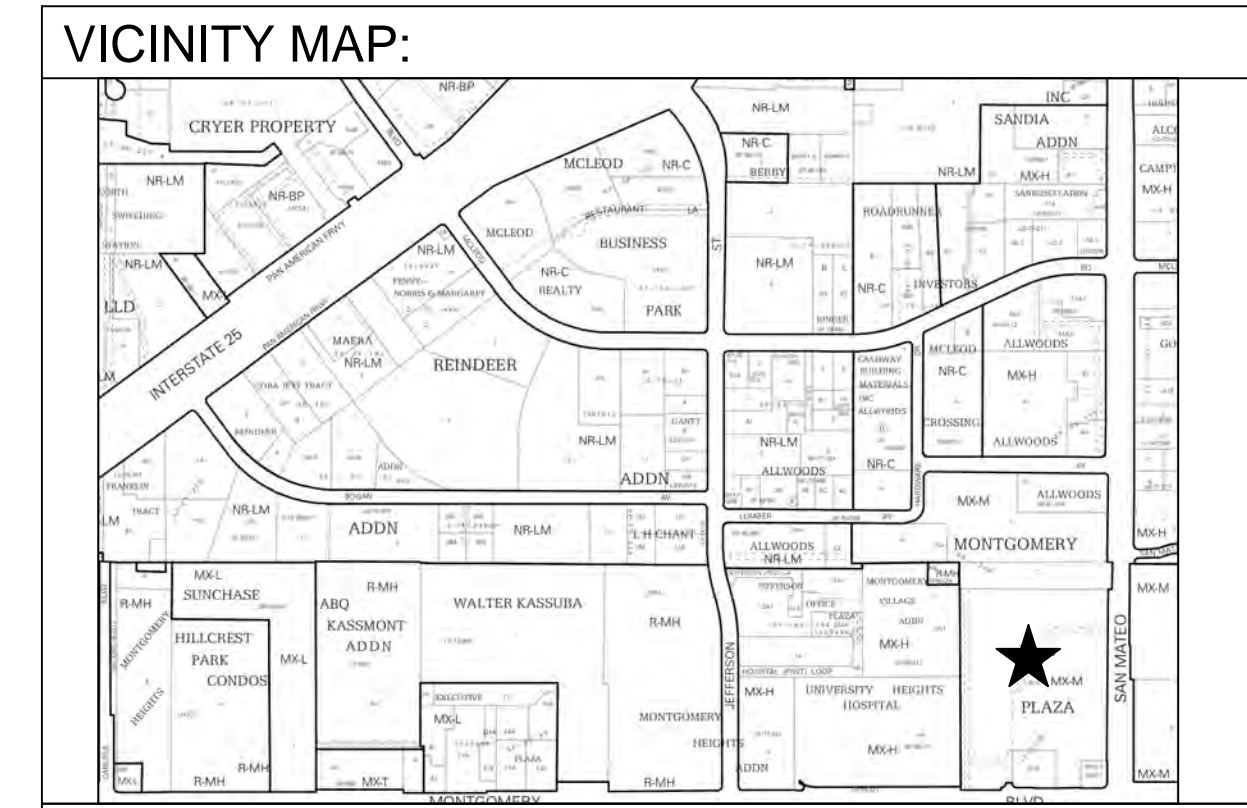
\_\_\_\_\_  
**DATE**



2 ENLARGED SITE PLAN  
SCALE: 1" = 20'



1 SITE PLAN  
SCALE: 1" = 60'



**SITE DATA:**

PROJECT ADDRESS: 5100 MONTGOMERY BLVD. NE

LEGAL DESCRIPTION: TRACT D-1-A OF TRACTS D-1-A & D-1-B MONTGOMERY PLAZA

PROPERTY SIZE: 16.77 ACRES

CURRENT ZONING: MX-M (MODERATE INTENSITY)

PROPOSED USE: COMMERCIAL RETAIL

TOTAL BUILDING SIZE: 191,200 SF

TOTAL RENOVATION AREA: 73,060 SF

**GENERAL NOTES**

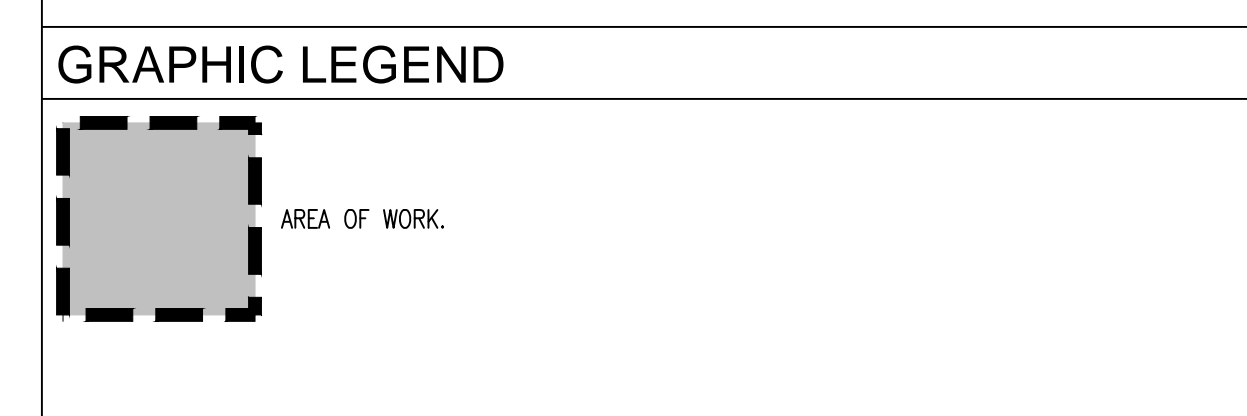
A. ALL SIGNS ARE TO BE PERMITTED SEPARATELY.

**PARKING REQUIREMENTS**

MONTGOMERY PLAZA USE(S)	SQ. FT.	REQUIRED RATIO	TOTAL PARKING REQ'D	TOTAL PARKING PROVIDED
A - SHOPS	27,022	4 SPACES/1,000 SQ.FT. GFA	108	
B - COMMERCIAL	6,722	4 SPACES/1,000 SQ.FT. GFA	28	
C - BANK	3,672	3 SPACES/1,000 SQ.FT. GFA	10	
D - RESTAURANT	2,979	8 SPACES/1,000 SQ.FT. GFA	24	
E - RETAIL	140,108	4 SPACES/1,000 SQ.FT. GFA	560	
F - LOWER LEVEL STORAGE*	51,092	1 SPACES/3,000 SQ.FT. GFA	17	
<b>TOTAL SQUARE FOOTAGE</b>	<b>231,550</b>		<b>747</b>	<b>1,123</b>

\* LOWER LEVEL STORAGE IS NON-LEASEABLE SPACE

- KEYED NOTES**
- DEMOLISH EXISTING CURB AND GUTTER.
  - SAW CUT EXISTING ASPHALT 12" FROM EXISTING CURB.
  - DEMOLISH EXISTING CONC. SIDEWALK; SAW CUT SIDEWALK AT FUTURE CURB.
  - STRIPES FOR STANDARD PARKING STALL.
  - NEW CONC. CURB, MATCH EXISTING CURB HEIGHT AND WIDTH.
  - ASPHALT AND BASE COMPOSITE TO MATCH EXISTING.



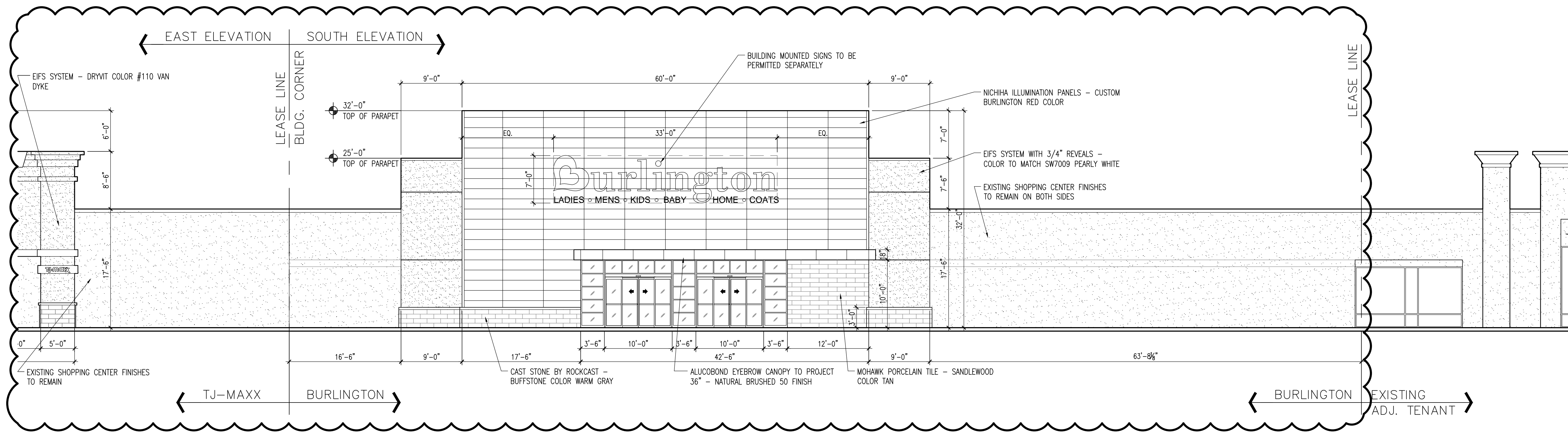
**MODULUS ARCHITECTS**  
100 SUN AVENUE NE SUITE 600  
ALBUQUERQUE, NEW MEXICO 87109  
PHONE (505) 338-1499 FAX (505) 338-1498

PRELIMINARY  
NOT FOR  
CONSTRUCTION

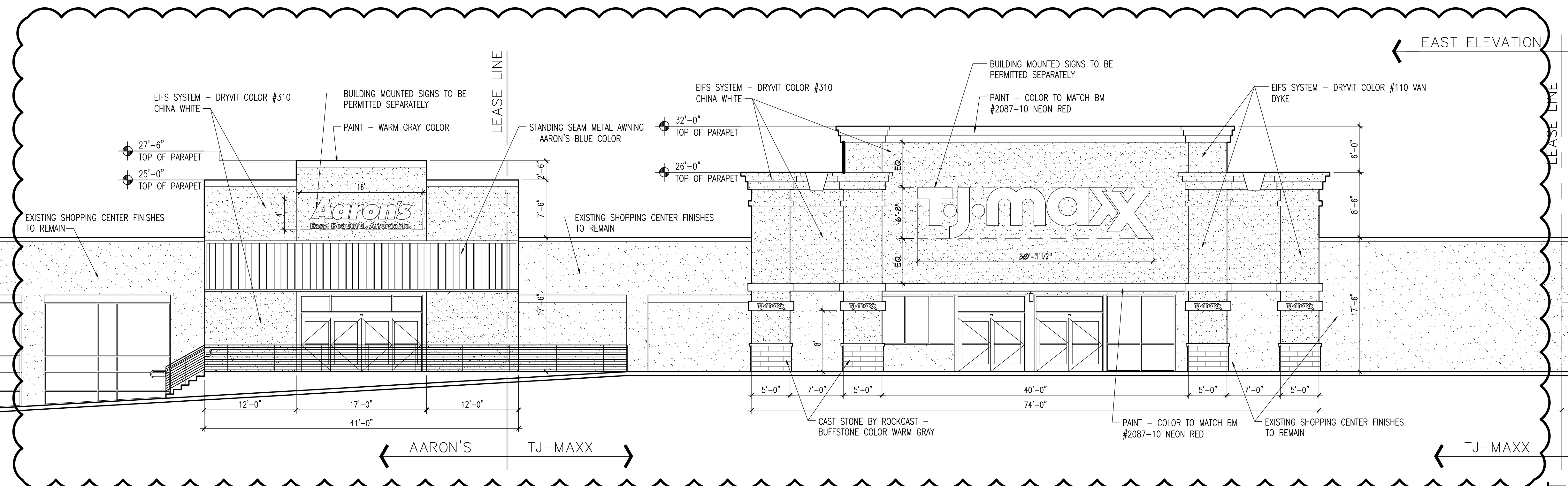
**ADMINISTRATIVE AMENDMENT**

PROJECT TITLE MONTGOMERY PLAZA 5000 MONTGOMERY BLVD. NE ALBUQUERQUE, NEW MEXICO 87109	DRAWN BY: CDC
PROJECT MANAGER STEPHEN DUNBAR, AIA	JOB NO. ..
SHEET TITLE SITE PLANS	
DATE 08/27/2021	SHEET SP01
SCALE AS NOTED	

REV	DATE	BY	REVISION



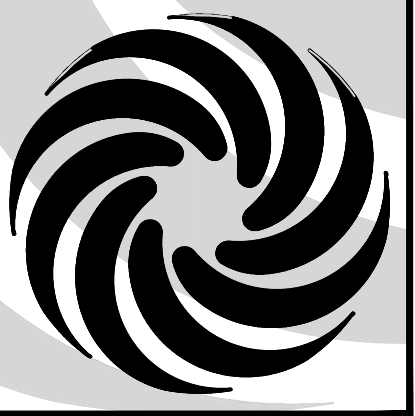
1 PARTIAL SOUTH ELEVATION  
SCALE: 1/8" = 1'-0"



2 PARTIAL EAST ELEVATION  
SCALE: 1/8" = 1'-0"

REV	DATE	BY	REVISION
▲			
▲			
▲			
▲			
▲			

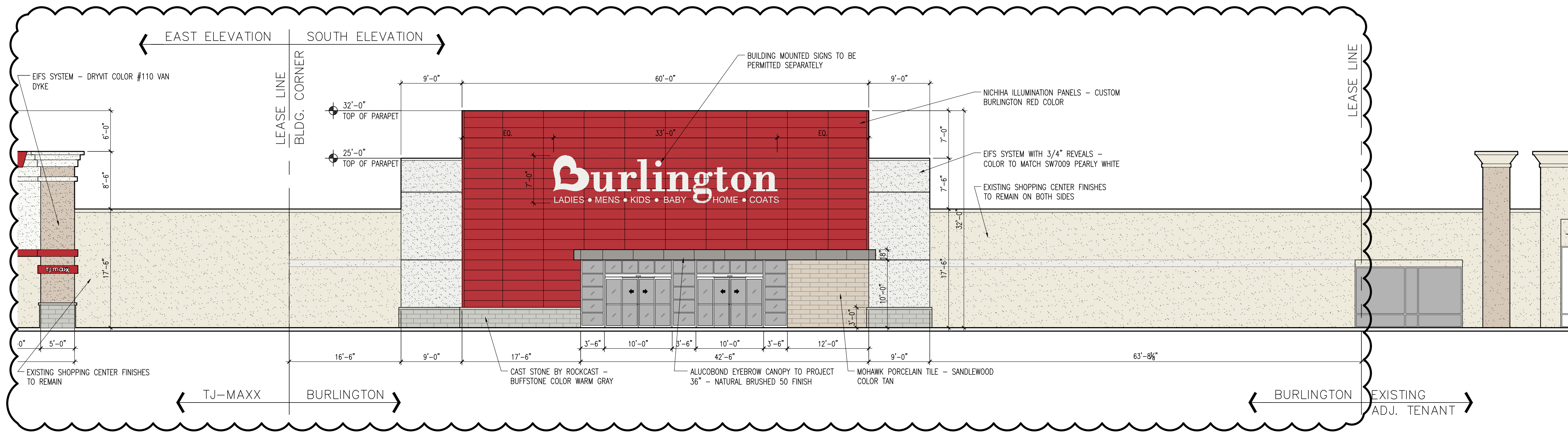
**MODULUS ARCHITECTS**  
 100 SUN AVENUE NE SUITE 600  
 ALBUQUERQUE, NEW MEXICO 87109  
 PHONE (505) 338-1499 FAX (505) 338-1498



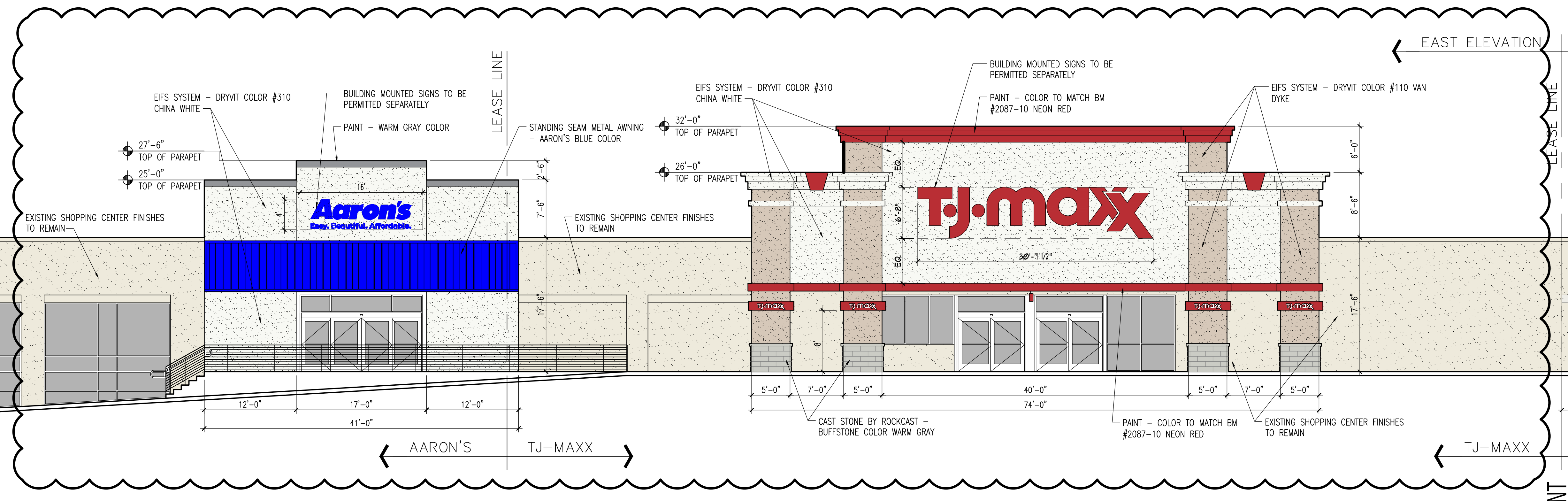
PRELIMINARY  
NOT FOR  
CONSTRUCTION

PROJECT TITLE MONTGOMERY PLAZA 5000 MONTGOMERY BLVD. NE ALBUQUERQUE, NEW MEXICO 8109		DRAWN BY: CDC	
PROJECT MANAGER STEPHEN DUNBAR, AIA		JOB NO. ..	
SHEET TITLE EXTERIOR ELEVATIONS		DATE 08/21/2021	
SCALE AS NOTED		SHEET NO. 101	

ADMINISTRATIVE AMENDMENT



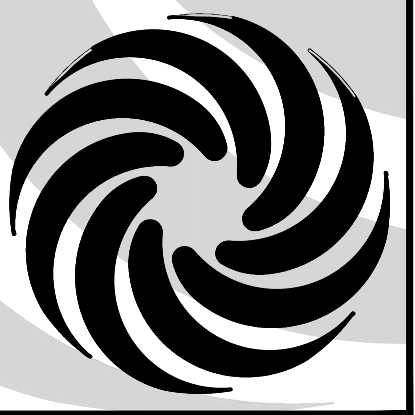
1 PARTIAL SOUTH ELEVATION  
SCALE: 1/8" = 1'-0"



2 PARTIAL EAST ELEVATION  
SCALE: 1/8" = 1'-0"

REV	DATE	BY	REVISION
1			
2			
3			
4			
5			

**MODULUS ARCHITECTS**  
 100 SUN AVENUE NE SUITE 600  
 ALBUQUERQUE, NEW MEXICO 87109  
 PHONE (505) 338-1499 FAX (505) 338-1498



PRELIMINARY  
NOT FOR  
CONSTRUCTION

PROJECT TITLE MONTGOMERY PLAZA 5000 MONTGOMERY BLVD. NE ALBUQUERQUE, NEW MEXICO 87109		DRAWN BY: CDC	
PROJECT MANAGER STEPHEN DUNBAR, AIA		JOB NO. ..	
SHEET TITLE EXTERIOR ELEVATIONS		DATE 08/21/2021	
SCALE AS NOTED		SHEET NO. 11	

ADMINISTRATIVE AMENDMENT