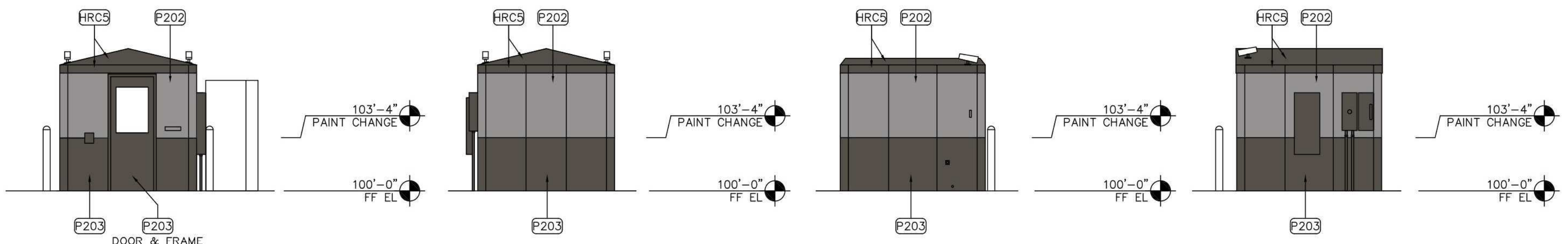
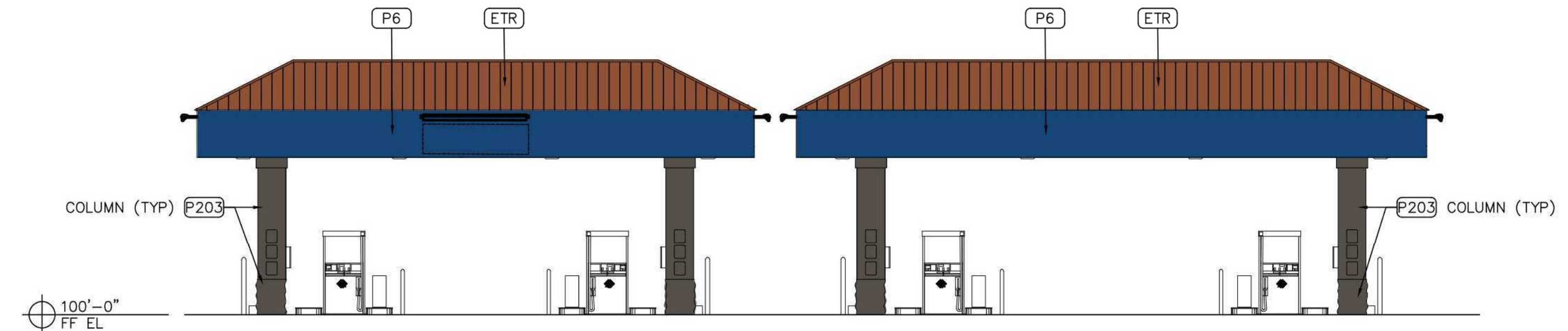


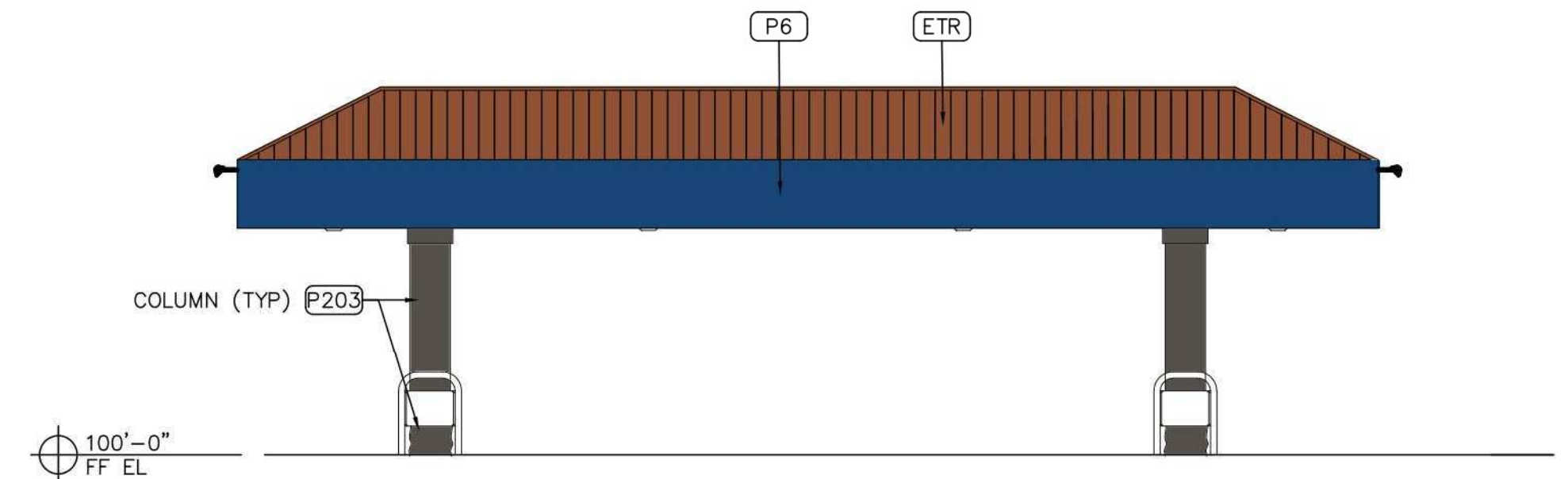
May 31, 2019 - 11:46am - USER: jasonh
 \\veg-tulsa3\m-drive\williamr-special\Projects\2019 PM Repair\1\2-ibu703\Drawings\0110 - A2 EXTERIOR ELEVATIONS AND FUEL STATION - 4703.dwg



7 SERVICE BLDG ELEVATION
 1/8" = 1'-0"



5 FUEL CANOPY ELEVATION
 1/8" = 1'-0"

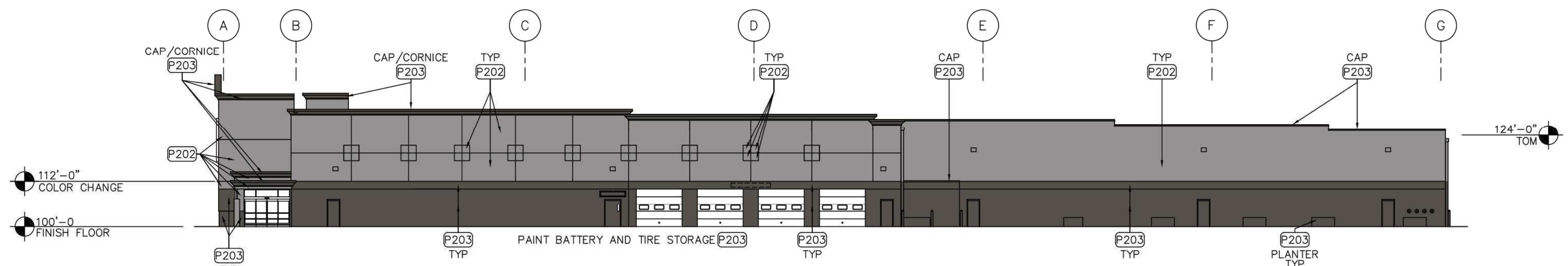


6 FUEL CANOPY ELEVATION
 1/8" = 1'-0"

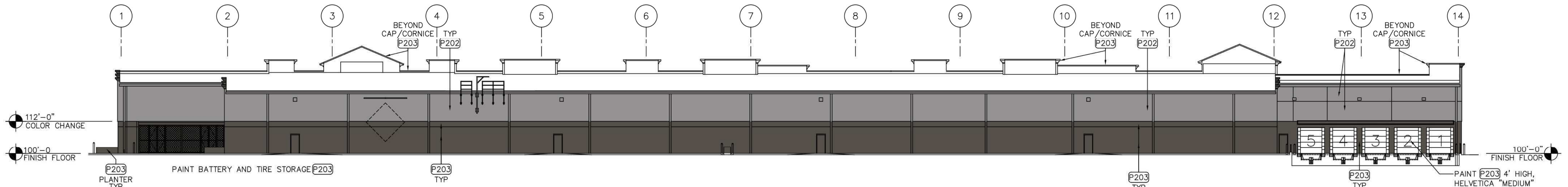
COLOR LEGEND
 (MASTER LIST--ALL COLORS MAY NOT APPLY)

- [P5] OSHA STANDARD "SAFETY YELLOW"
- [P6] SW# 6811 "HONORABLE BLUE"
- [P21] SW# 4081 "SAFETY RED"
- [P36] SW# 6989 "DOMINO"
- [P20] SW# 7668 "MARCH WIND"
- [P202] SW# 7670 "GRAY SHINGLE"
- [P203] SW# 7048 "URBANE BRONZE"
- [P81] SW# 6258 "TRICORN BLACK"
- [P126] SW# 6885 "KNOCKOUT ORANGE"
- [P140] SW# 7004 "SNOWBOUND"
- [HRC4] MATCH SW# 7019 "GAUNTLET GRAY"
- [HRC9] MATCH SW# 7048 "URBANE BRONZE"
- [P20] PREFINISHED BLUE
- [ETR] EXISTING TO REMAIN

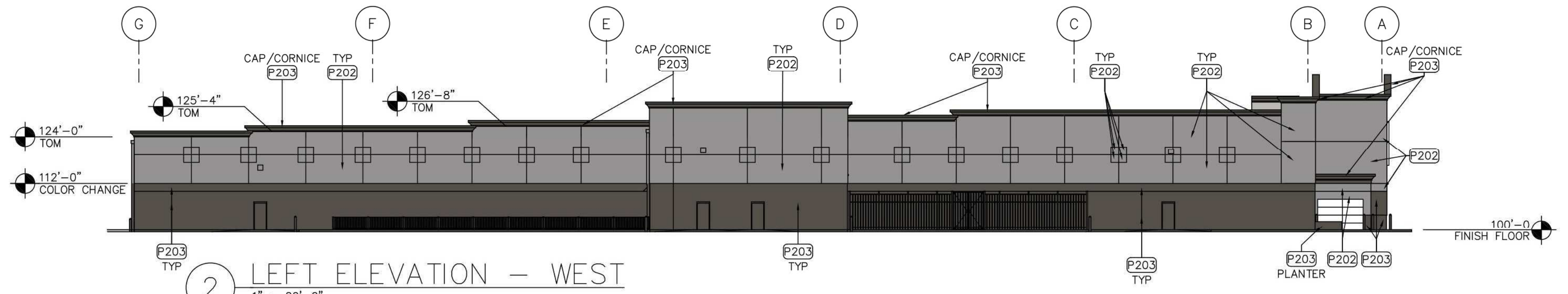
- SHEET NOTES**
1. POWER WASH 100% OF EXTERIOR WALLS PRIOR TO PAINTING.
 2. PATCH AND REPAIR EXTERIOR WALL SURFACES, DAMAGED OR EXPOSED DUE TO REMOVAL OF BUILDING MOUNTED ITEMS, TO MATCH ADJACENT AS REQUIRED.
 3. REMOVE SEALANT AND BACKER MATERIAL FROM ALL BUILDING CONTROL JOINTS AND EXPANSION JOINTS.
 4. PAINT EXTERIOR OF BUILDING AS SHOWN. AT WALL(S) WITH LIT SIGN(S), MASK AND PAINT AROUND SIGN CHARACTER(S).
 5. PAINT DOOR HOODS, HOLLOW METAL STEEL DOORS AND FRAMES, GUTTERS AND DOWNSPOUTS, EXPOSED METAL FLASHING, HANDRAILS, GAS LINES, AND EXPOSED MISCELLANEOUS STEEL TO MATCH ADJACENT BUILDING COLOR UNO. IF THERE ARE TWO COLORS AT ADJACENT WALL, USE BOTTOM COLOR FOR ENTIRE DOOR AND FRAME.
 6. PAINT CANOPY STRUCTURAL STEEL AND FLASHING TO MATCH ADJACENT WALL.
 7. WHERE CANOPIES ARE VISIBLE TO AND ACCESSED BY CUSTOMERS, PAINT UNDERSIDE OF CANOPY DECK P140. DO NOT PAINT CANOPY DECK IF NOT PREVIOUSLY PAINTED.
 8. PAINT JIB CRANE - P36 ON JIB BOOM, P5 ON HANDRAILS.
 9. PAINT ALL GAS PIPE ON SIDE WALLS TO MATCH ADJACENT WALL COLOR. DO NOT PAINT METER OR VALVES.
 10. PAINT SPRINKLER VALVES P21. DO NOT PAINT OVER SIGHT GLASS OR FIRE ALARM BELL.
 11. PAINT SECURITY WALL PACK HOUSINGS TO MATCH ADJACENT WALL. REMOVE PAINT OVERSPRAY FROM LENSES.
 12. DO NOT PAINT LED WALL PACK HOUSINGS.
 13. SIGNAGE OMITTED FOR CLARITY.
 14. REMOVE ANY BANNERS OR TEMPORARY SIGNS PRIOR TO PAINTING.
 15. PAINT ALL REMOTE BUILDINGS, FENCES, OR STRUCTURES NOT SHOWN ON A2, THAT WERE PREVIOUSLY PAINTED, SW# 7670 "GRAY SHINGLE".
 16. WHERE DISSIMILAR COLORS OCCUR ON EITHER SIDE OF REVEAL, EACH COLOR SHALL TERMINATE AT THE CENTERLINE OF THE REVEAL.
 17. EXISTING EXTERIOR OVERHEAD SECTIONAL DOORS TO REMAIN WHICH ARE FACTORY FINISHED SHALL BE CLEANED. DO NOT PAINT. FIELD VERIFY APPLICABLE DOORS.
 18. EXISTING EXTERIOR OVERHEAD SECTIONAL DOORS TO REMAIN WHICH ARE PAINTED SHALL BE CLEANED AND REPAINTED, SW# 7005 "PURE WHITE." FIELD VERIFY APPLICABLE DOORS.



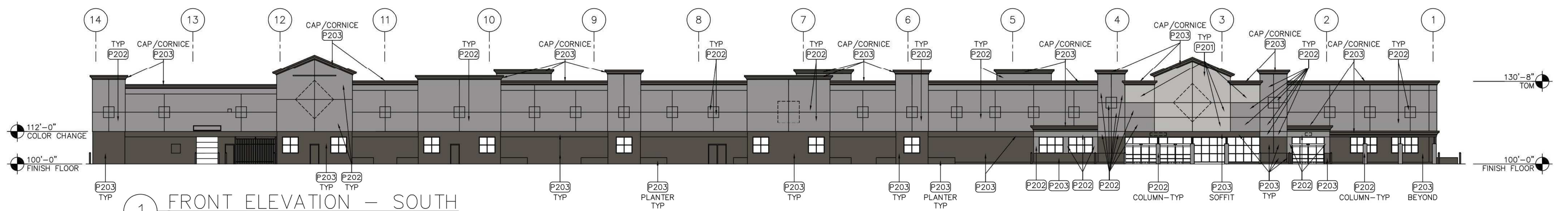
4 RIGHT ELEVATION - EAST
 1" = 20'-0"



3 REAR ELEVATION - NORTH
 1" = 20'-0"



2 LEFT ELEVATION - WEST
 1" = 20'-0"



1 FRONT ELEVATION - SOUTH
 1" = 20'-0"

SGA Design Group, P.C.
 1437 South Boulder, Suite 550
 Tulsa, Oklahoma 74119-3809
 T 918.597.8801
 www.sgadesigngroup.com

STIPULATION FOR REUSE
 THE DRAWING WAS PREPARED FOR THE USE OF A SPECIFIC SITE AT THE LOCATION AND CONDITIONS AND IS NOT TO BE REUSED FOR ANY OTHER PROJECT OR SITE WITHOUT THE WRITTEN CONSENT OF SGA DESIGN GROUP, P.C.

CONSULTANTS

SUNSHINE CLUB
 ALBUQUERQUE, NM
 CLUB NO. 4703
 JOB NUMBER: 19574024 FACILITIES MAINTENANCE

ISSUE BLOCK

CHECKED BY: C.J.L. AVT
 DRAWN BY: CAE/LC
 PROTO:
 PROTO CYCLE:
 DOCUMENT DATE: 02/24/20

RECORD DRAWINGS NOTICE
 THE RECORD COPY OF THIS DRAWING IS ON FILE AT THE OFFICES OF SGA DESIGN GROUP, THIS ELECTRONIC DOCUMENT IS RELEASED FOR THE PURPOSES OF REFERENCE. COORDINATION AND/OR FACILITY MANAGEMENT OF THIS DRAWING SHALL BE THE RESPONSIBILITY OF THE USER. THIS DRAWING SHALL BE COMPLETE UNLESS IT IS SIGNED AND SEALED BY THE ARCHITECT.

STATE OF NEW MEXICO
 VIRGINIA HART
 No. 005765
 REGISTERED ARCHITECT
 03/03/2020

EXTERIOR ELEVATIONS AND FUEL STATION

SHEET: A2