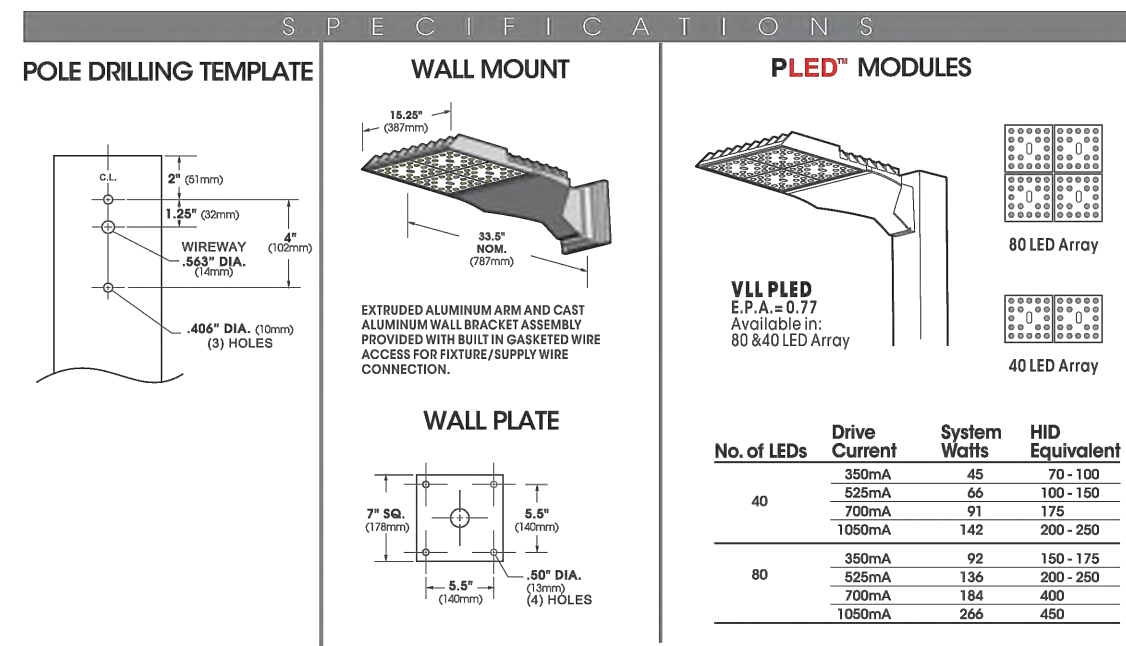


**VALULUME SERIES - PLED**

FIXTURE TYPE:  
A, B, C, D & E



SECOND ORDERING INFORMATION

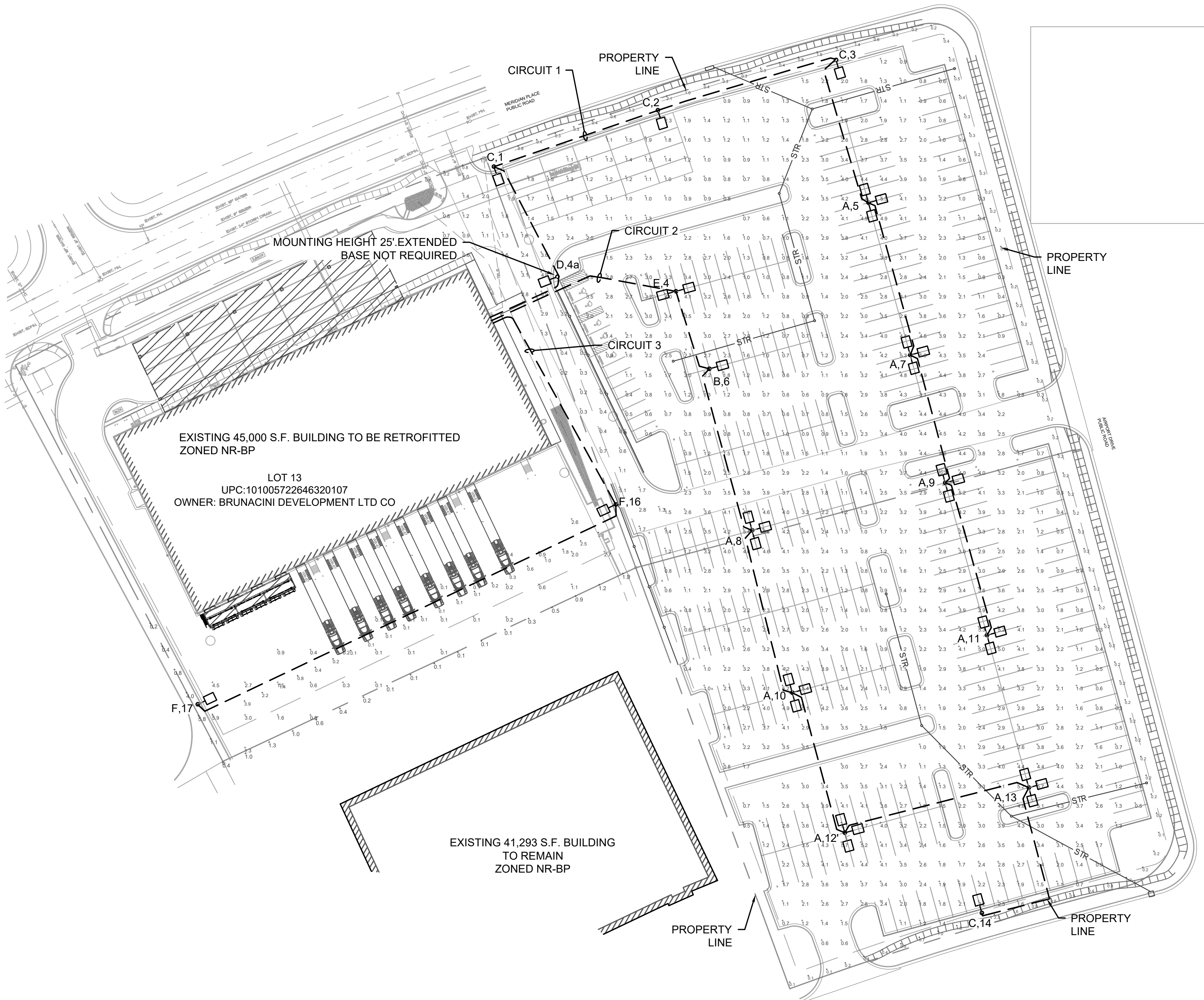
MODEL	OFFICE	LED	FINISH	OPTIONS	
VL LED	PLED DISTRIBUTION	No. LEDs	DRIVE CURRENT	CODE	3500K CCT
		40	350mA	45	70-100
		80	350mA	91	175
		120	350mA	142	200-250
		160	350mA	192	150-175
		200	350mA	242	200-250
		240	350mA	292	200-250
		280	350mA	342	200-250
		320	350mA	392	200-250
		360	350mA	442	200-250
		400	350mA	492	200-250
		440	350mA	542	200-250

**HOLOPHANE**  
LEADER IN LIGHTING SOLUTIONS

**MGLED**  
Mongoose Large LED

FIXTURE TYPE: E

Technical specifications and dimensions for the Mongoose Large LED fixture, including mounting height, base details, and performance data.

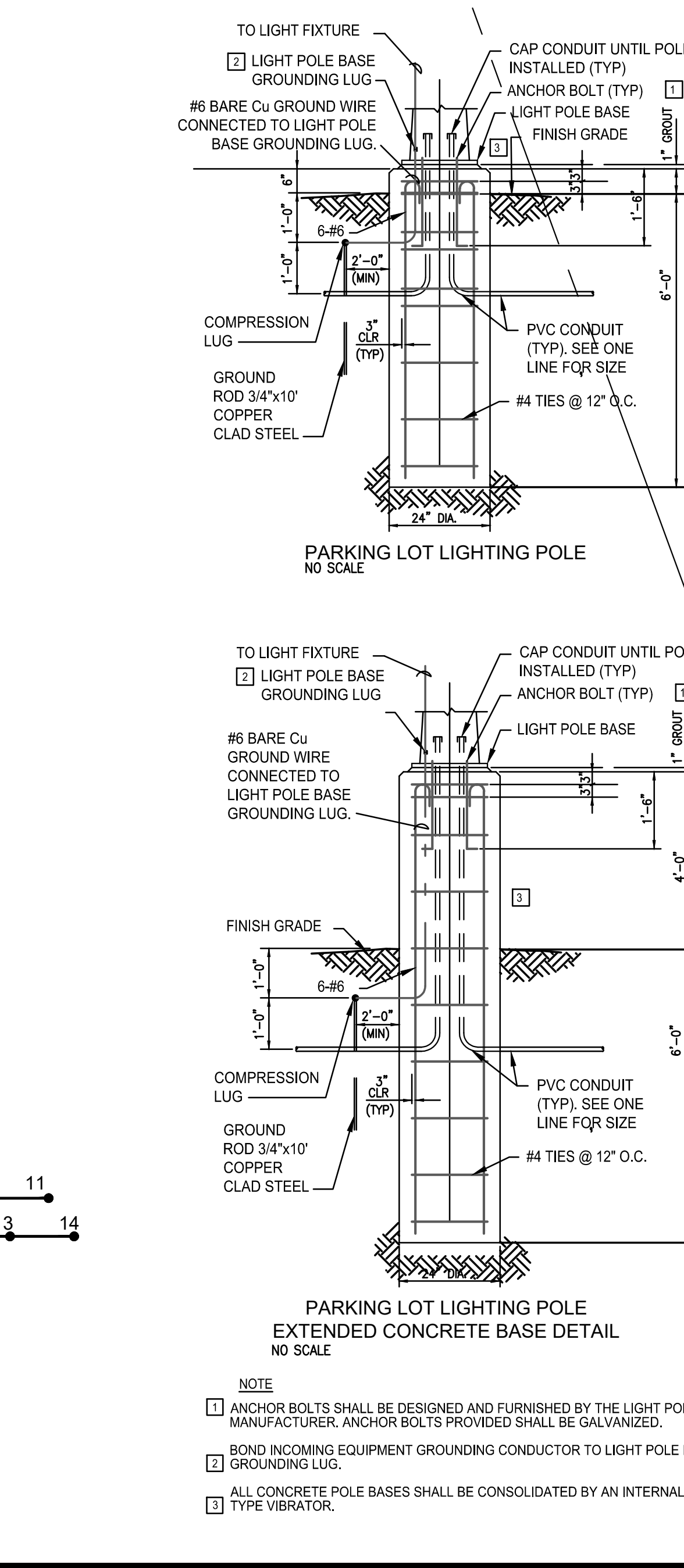
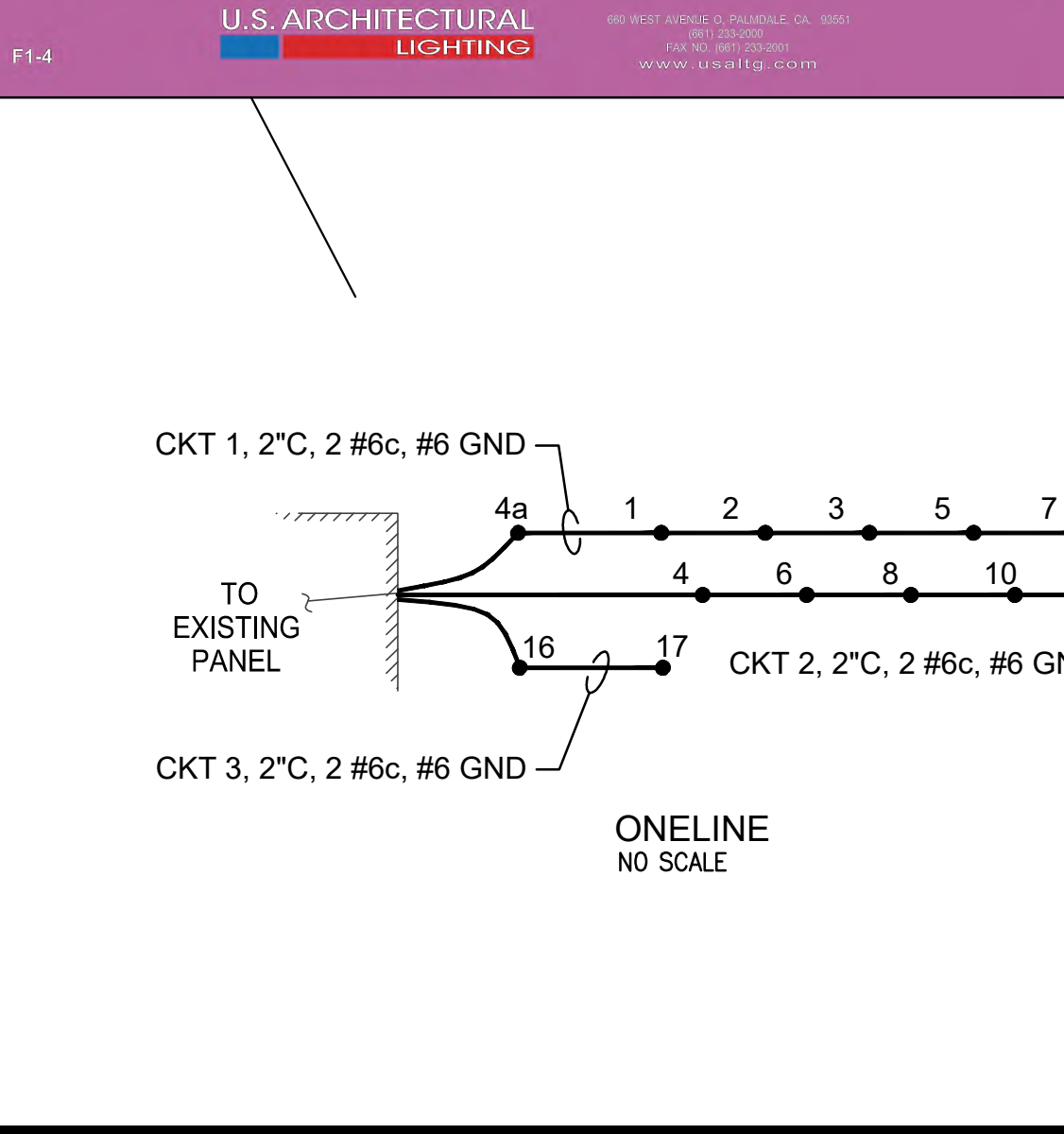


**SNTS SERIES**  
ENGINEERING DATA  
Maximum EPA - Square Feet

Catalog Number	Maximum 100 MPH	80 MPH	70 MPH		
SNTS 185-11	400	10.9	14.5	20.2	27.0
SNTS 205-11	400	8.6	12.0	16.6	23.3
SNTS 205-7	450	15.7	19.2	25.1	31.2
SNTS 255-11	400	5.1	6.5	9.8	14.6
SNTS 255-7	400	9.4	12.4	17.0	23.8
SNTS 305-11	350	N/A	2.8	5.7	7.5
SNTS 305-7	375	5.6	8.7	12.1	18.2
SNTS 355-7	350	2.5	5.2	9.3	14.9

ORDERING INFORMATION

MODEL	POLES	MOUNTING	FINISH	OPTIONS	
SNTS	POLE	WALL	ROOF	ANCHORAGE	
	185-11	18"	11"	115"	1"X3/8"X4"
	205-11	20"	11"	115"	1"X3/8"X4"
	205-7	20"	7"	115"	1"X3/8"X4"
	255-11	25"	11"	115"	1"X3/8"X4"
	255-7	25"	7"	115"	1"X3/8"X4"
	305-11	30"	11"	115"	1"X3/8"X4"
	305-7	30"	7"	115"	1"X3/8"X4"
	355-7	35"	7"	115"	1"X3/8"X4"
	355-7	35"	7"	115"	1"X3/8"X4"
	355-7	35"	7"	115"	1"X3/8"X4"
	355-7	35"	7"	115"	1"X3/8"X4"



**Luminaire Schedule**

Symbol	Tag	Catalog Number	Qty	Lumens*	Watts*	LLF	NOTES
□	A	LUM-V-SQ-M-80PLED-700mA-NW-277-RAL-9005-T	8 (24)	18139	184	0.90	1,2
○	B	LUM-PLED-VSQ-W-80LED-700mA-NW-277-RAL-9005-T	1	17704	183	0.90	1,2
○	C	LUM-PLED-III-W-80LED-700mA-NW-277-RAL-9005-T	4	16195	183	0.90	1,2
○	D	LUM-IV-FT-80PLED-700mA-NW-277-RAL-9005-T	1	16143	183	0.90	1,2
□	E	LUM-V-SQ-M-80PLED-700mA-NW-277-RAL-9005-T	1 (2)	18139	184	0.90	1,2
○	F	MGLED P1 40K MVOLT FT LT VT BKSD US	2	34396	246	0.90	1,3

NOTES:

- POLE NUMBER NEXT TO FIXTURE TAG. \*LUMENS AND WATTS ARE PER EACH LUMINAIRE HEAD.
- MOUNT FIXTURE ON 25" SSS US ARCHITECTURAL SNTS 255-11-RAL-9005-S. SPECIFY DRILL MOUNT (PER PLAN). 4' EXTENDED CONCRETE BASE REQUIRED.
- MOUNT HOLOPHANE MONGOOSE FIXTURE ON 25" SSS US ARCHITECTURAL SNTS 255-11-PT23-RAL-9005-S.

**Calculation Summary**

Label	Units	Avg	Max	Min	Avg/Min	Max/Min
PARKING LOT	Fc	2.35	5.7	0.3	7.8	19.0
CROSSWALK	Fc	3.16	4.0	2.1	1.50	1.90
60' DOCK DIMENSION	Fc	0.91	3.9	0.1	9.10	39.00
DOCK AREA	Fc	1.11	5.9	0.1	11.10	59.00

- GENERAL NOTES**
- PRIOR TO COMMENCEMENT OF WORK, THE CONTRACTOR SHALL NOTIFY ALL THOSE COMPANIES WHICH HAVE FACILITIES IN THE NEAR VICINITY OF THE CONSTRUCTION TO BE PERFORMED.
  - CONTRACTOR SHALL VERIFY VOLTAGE AVAILABLE PRIOR TO ORDERING MATERIALS. PROVIDE 30A BREAKER FOR LIGHTING CIRCUITS.
  - LIGHTING LAYOUT IS BASED ON THE MANUFACTURERS LISTED ON THIS SHEET. EACH LUMINAIRE SHALL BE ADJUSTED AND LEVELED TO MATCH THE ELEVATION OF THE PAVEMENT.
  - POLE SETBACK SHALL BE 3' AS SHOWN ON DRAWING. POLES SHALL BE LOCATED IN LINE WITH PARKING LOT LINES WHERE APPLICABLE.
  - FIXTURES SHALL BE MOUNTED ON 4' EXTENDED BASE WITH FINISH MOUNTING HEIGHT OF 29' UNLESS NOTED OTHERWISE.
  - CIRCUITING SHALL BE 2, #6, #6 GND IN A 2". THIS IS BASED ON CONDUIT FOLLOWING THE PATH INDICATED ON DRAWING. SHOULD CONTRACTOR DEVIATE CONDUIT ROUTE, CONTRACTOR SHALL VERIFY VOLTAGE DROP CALCULATIONS.
  - INDIVIDUAL AND SYSTEM GROUNDS SHALL BE INSTALLED ON ALL CIRCUITS. ALL DISTRIBUTION CABLE SHALL BE PLACED IN A SCHEDULE 40 PVC CONDUIT. CIRCUIT AS INDICATED.
  - PROVIDE ASTRONOMICAL TIMER AT EXISTING POWER PANEL FOR LIGHTING CIRCUITS.
  - EXTERIOR FIXTURES SHALL BE LED 4000K, SHIELDED FIXTURES WITH EXTERNAL OR INTERNAL SHIELD. ZERO INTENSITY AT OR ABOVE 90 DEGREES ABOVE NADIR AND NOT EXCEED 10 PERCENT OF LAMP LUMENS AT OR ABOVE 80 DEGREES.

**McCLURE™**  
making lives better.

1700 Swift Ave., Suite 100  
North Kansas City, Missouri 64116  
P 816-756-0444  
F 816-756-1763

NOTICE:  
McClure Engineering Company waives any and all responsibility and liability for problems which arise from failure to follow these Plans, Specifications, and the engineering intent they convey, or for problems which arise from failure to obtain and/or follow the engineers guidance with respect to any errors, omissions, inconsistencies, ambiguities, or conflicts which are alleged.

ALBUQUERQUE, NEW MEXICO  
191313-000  
INITIAL ISSUE DATE

REVISIONS

ENGINEER: MVE  
DRAWN BY: ELM  
CHECKED BY: CJF  
SURVEYOR: FIELDBOOK

DRAWING NO. C004  
SHEET NO. 6 OF 7

PLOT DATE: 4/17/2020 12:15 PM  
P191313-000-DRAWINGS-LIGHTING-191313-000 LITE.DWG  
BY: EMCQUEEN  
LAYOUT: C004