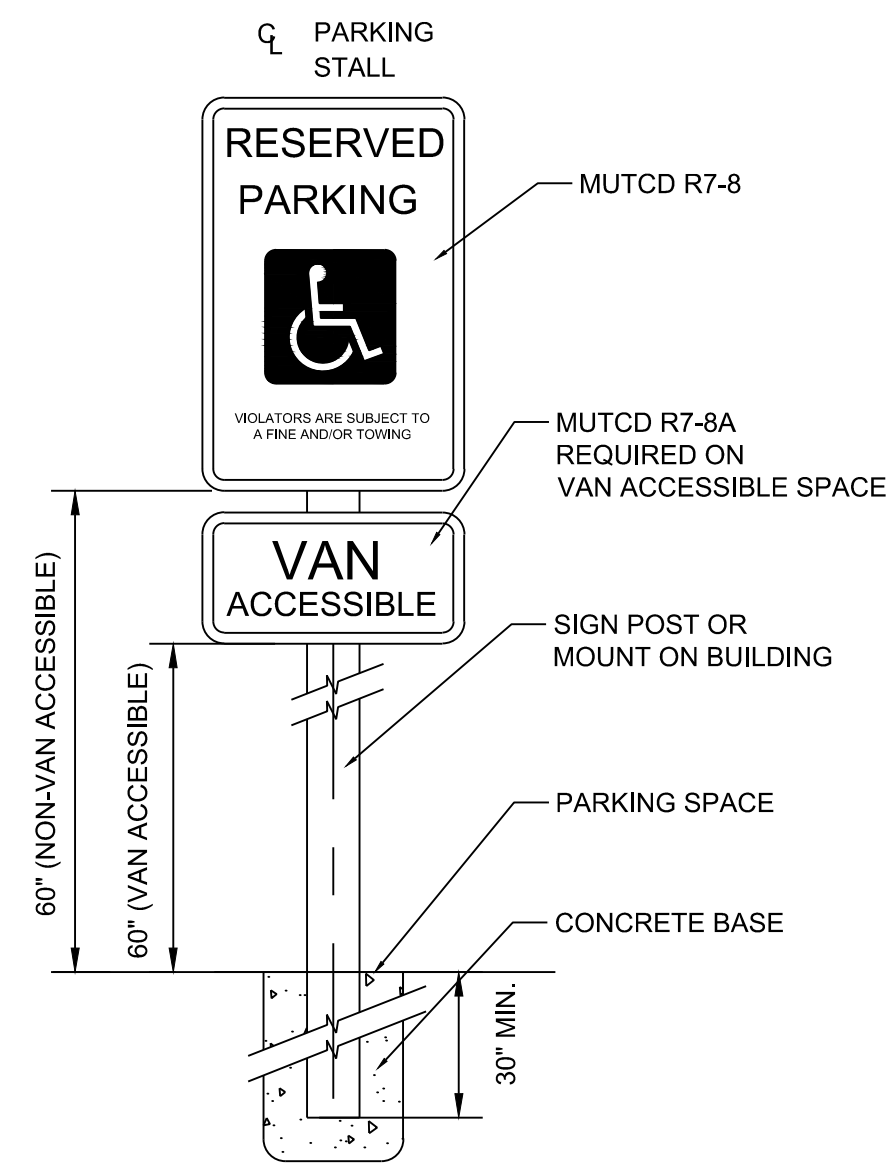
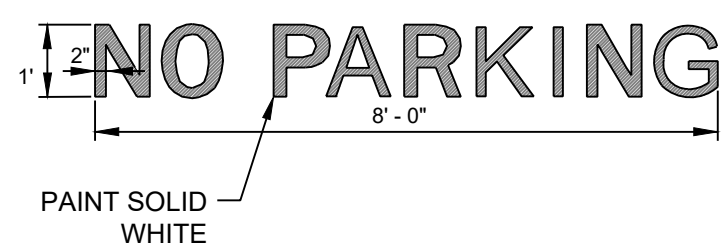


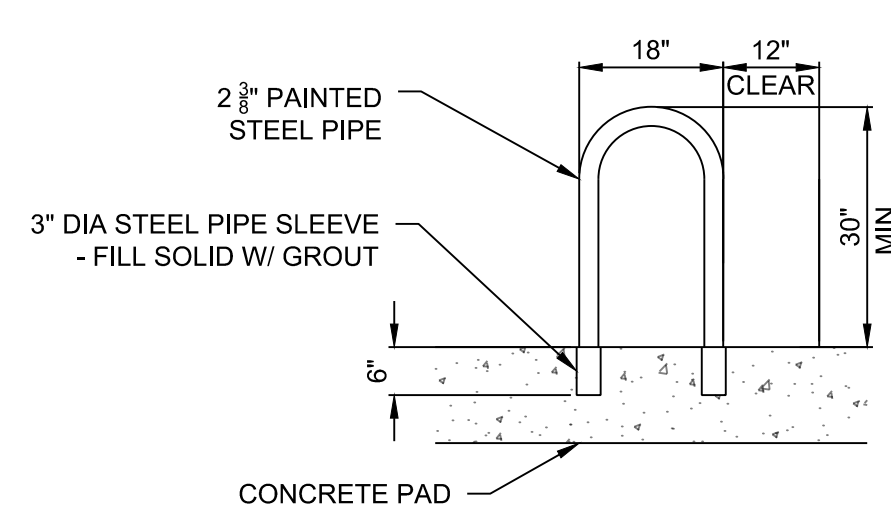
1 CROSS-WALK STRIPING DETAIL
NO SCALE



5 ADA PARKING SIGN DETAIL
NO SCALE

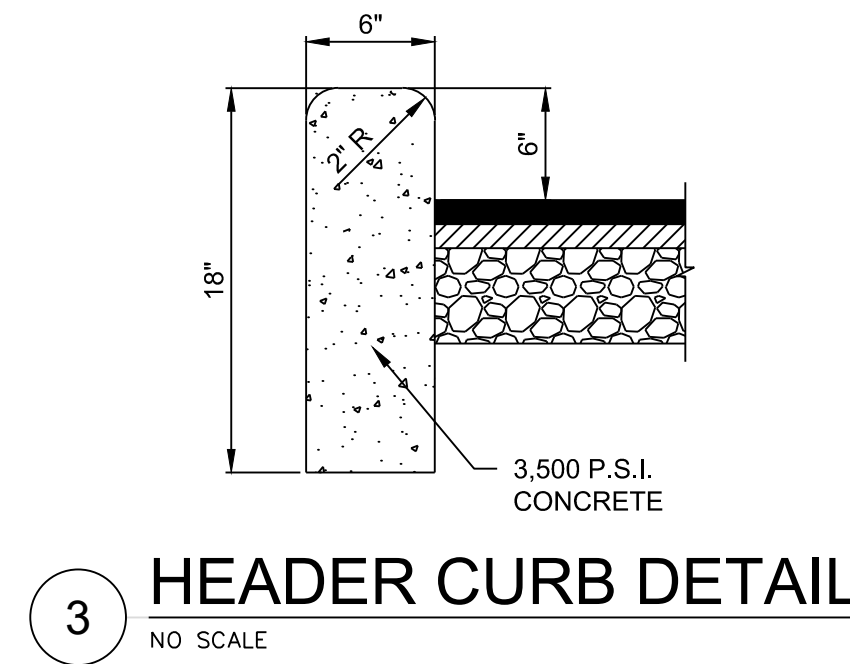


10 "NO PARKING" PAINT MARKING DETAIL
NO SCALE

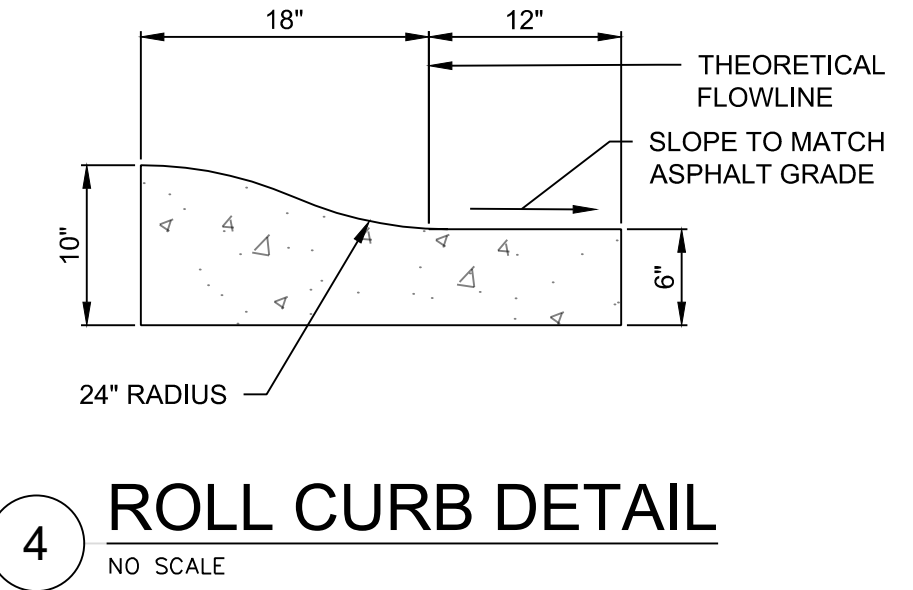


2 BICYCLE PARKING DETAIL
NO SCALE

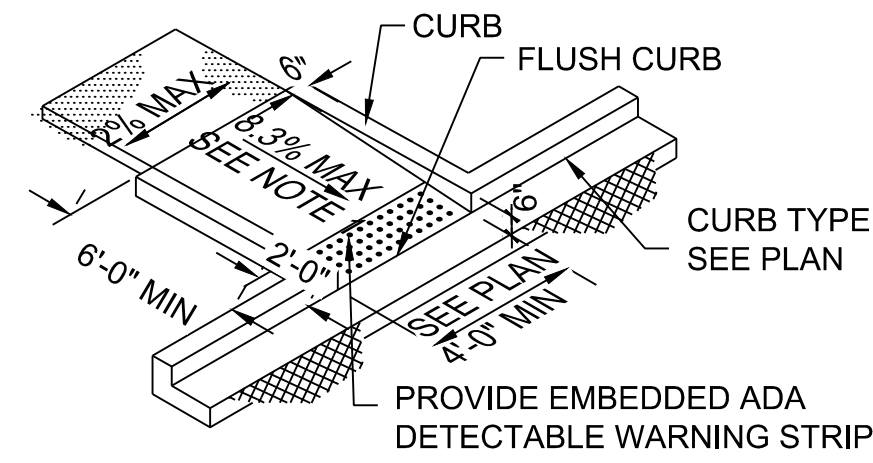
- BICYCLE RACK NOTES:**
1. SEE SITE PLAN FOR BIKE RACK LOCATION.
 2. THE BICYCLE FRAME SHALL BE SUPPORTED HORIZONTALLY AT TWO OR MORE PLACES. COMBI/TOASTER RACKS ARE NOT ALLOWED.
 3. THE RACK SHALL BE DESIGNED TO SUPPORT THE BICYCLE IN AN UPRIGHT POSITION.
 4. THE RACK ALLOWS VARYING BICYCLE FRAME SIZES AND STYLES TO BE ATTACHED.
 5. THE USER IS NOT REQUIRED TO LIFT THE BICYCLE ONTO THE BICYCLE RACK.
 6. EACH BICYCLE PARKING SPACE IS ACCESSIBLE WITHOUT MOVING ANOTHER BICYCLE.
 7. BICYCLE RACK SHALL BE STURDY AND ANCHORED TO A CONCRETE PAD.
 8. BICYCLE PARKING SPACES SHALL BE AT LEAST 6' LONG AND 2' WIDE.



3 HEADER CURB DETAIL
NO SCALE

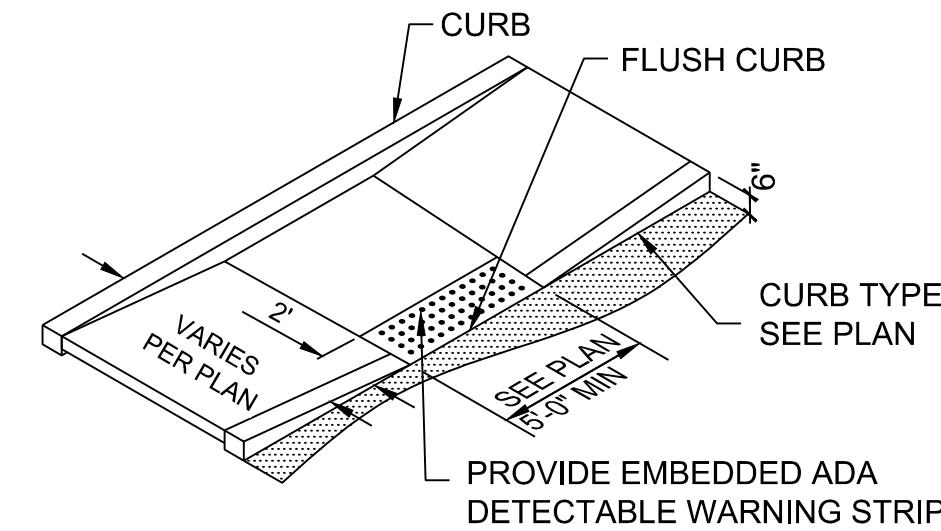


4 ROLL CURB DETAIL
NO SCALE



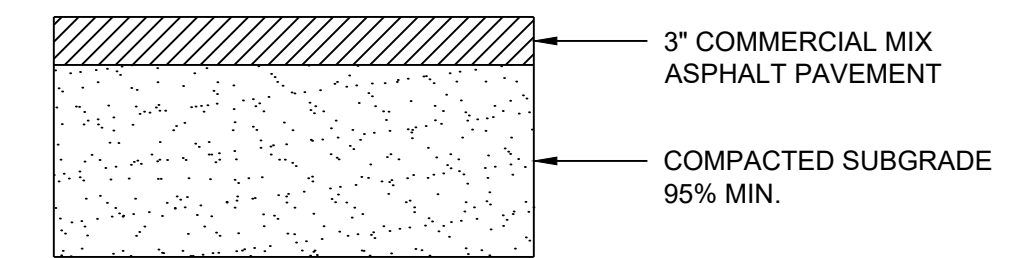
- NOTES:**
1. THE CURB RAMP RUNNING SLOPE SHALL NOT REQUIRE THE RAMP LENGTH TO EXCEED 15 FEET. WHEN APPLYING THE 15 FEET MAXIMUM LENGTH, THE RUNNING SLOPE OF THE CURB RAMP SHALL BE AS FLAT AS POSSIBLE.
 2. CROSS SLOPE NOT TO EXCEED 2%.

6 ADA RAMP TYPE A DETAIL
NO SCALE

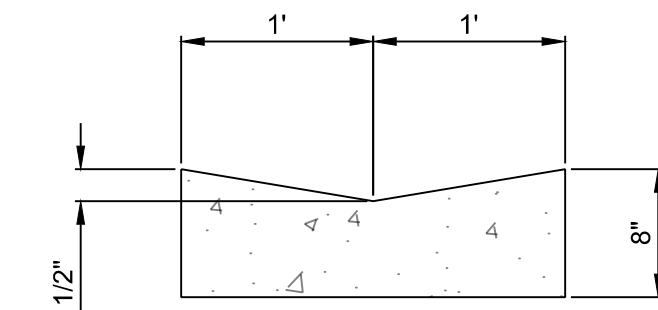


- NOTES:**
1. LONGITUDINAL RAMP SLOPE NOT TO EXCEED 8.3%.
 2. CROSS RAMP SLOPE NOT TO EXCEED 2.0%.
 3. PROVIDE 5' x 5' MIN. LANDING AT TOP AND BOTTOM OF RAMP. LANDING SLOPE NOT TO EXCEED 2.0% IN ALL DIRECTIONS.

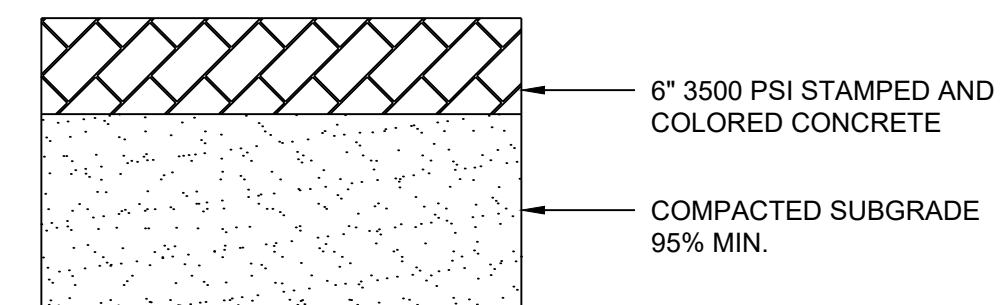
7 ADA RAMP TYPE B DETAIL
NO SCALE



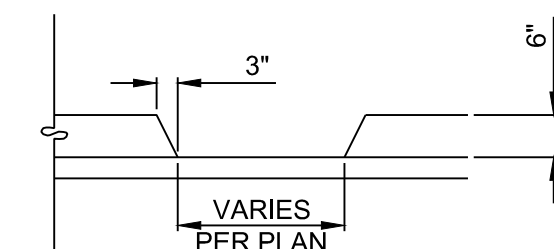
8 ASPHALT PAVEMENT SECTION
NO SCALE



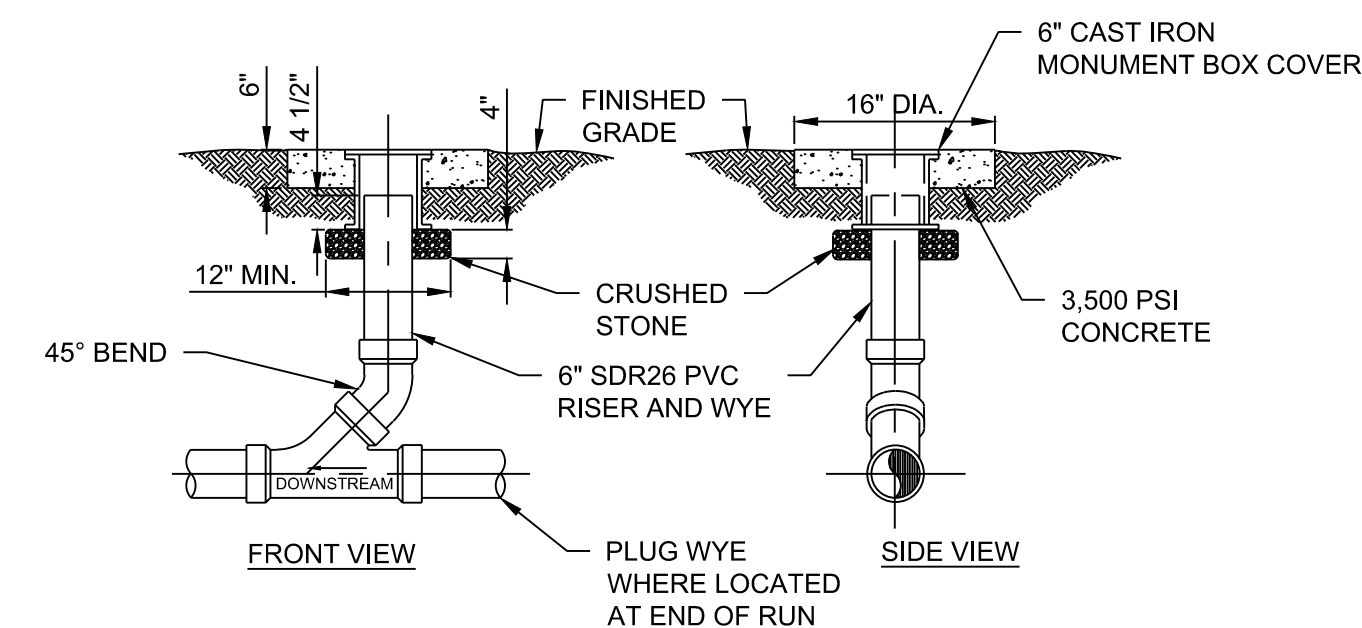
9 ALLEY GUTTER DETAIL
NO SCALE



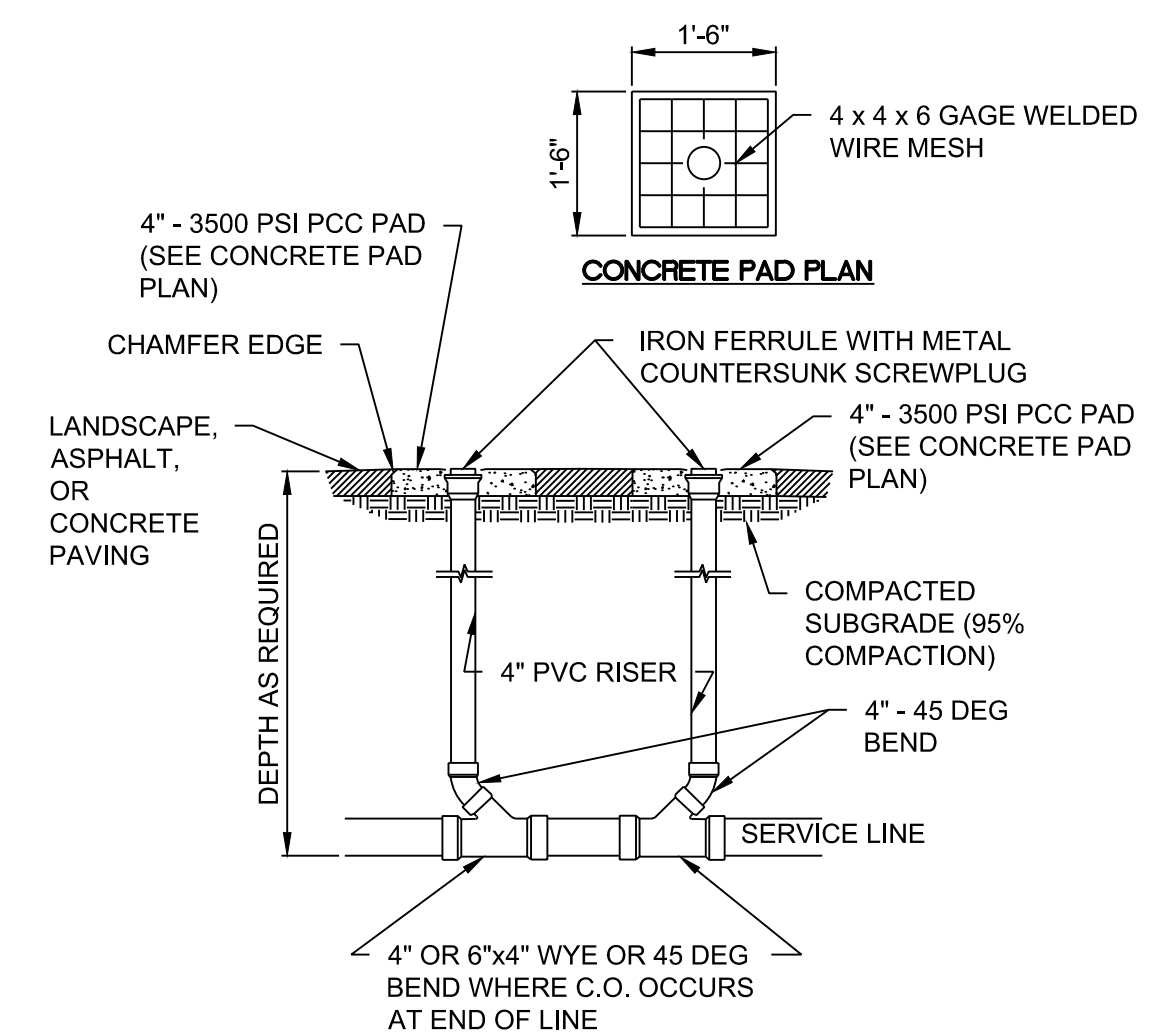
11 MEDIAN CONCRETE DETAIL
NO SCALE



12 CURB CUT DETAIL
NO SCALE



14 SEWER SINGLE CLEAN OUT DETAIL
NO SCALE



13 SEWER DOUBLE CLEAN OUT DETAIL
NO SCALE

DESIGNED BY		DRAWN BY		CHECKED BY		DATE	
J.S.	J.S.	J.S.	J.S.	J.S.	J.S.	6.12.2020	

RESPEC
COMMUNITY DESIGN SOLUTIONS
897 JEFFERSON STREET SUITE 101
WWW.RESPEC.COM PHONE: 805.925.9718

STAMP
SHELDON E. GREER
NEW MEXICO
1715A
REGISTERED PROFESSIONAL ENGINEER

PRELIMINARY
NOT FOR CONSTRUCTION
6/2020

THIS DRAWING IS INCOMPLETE AND NOT TO BE USED FOR CONSTRUCTION UNLESS IT IS STAMPED, SIGNED AND DATED.

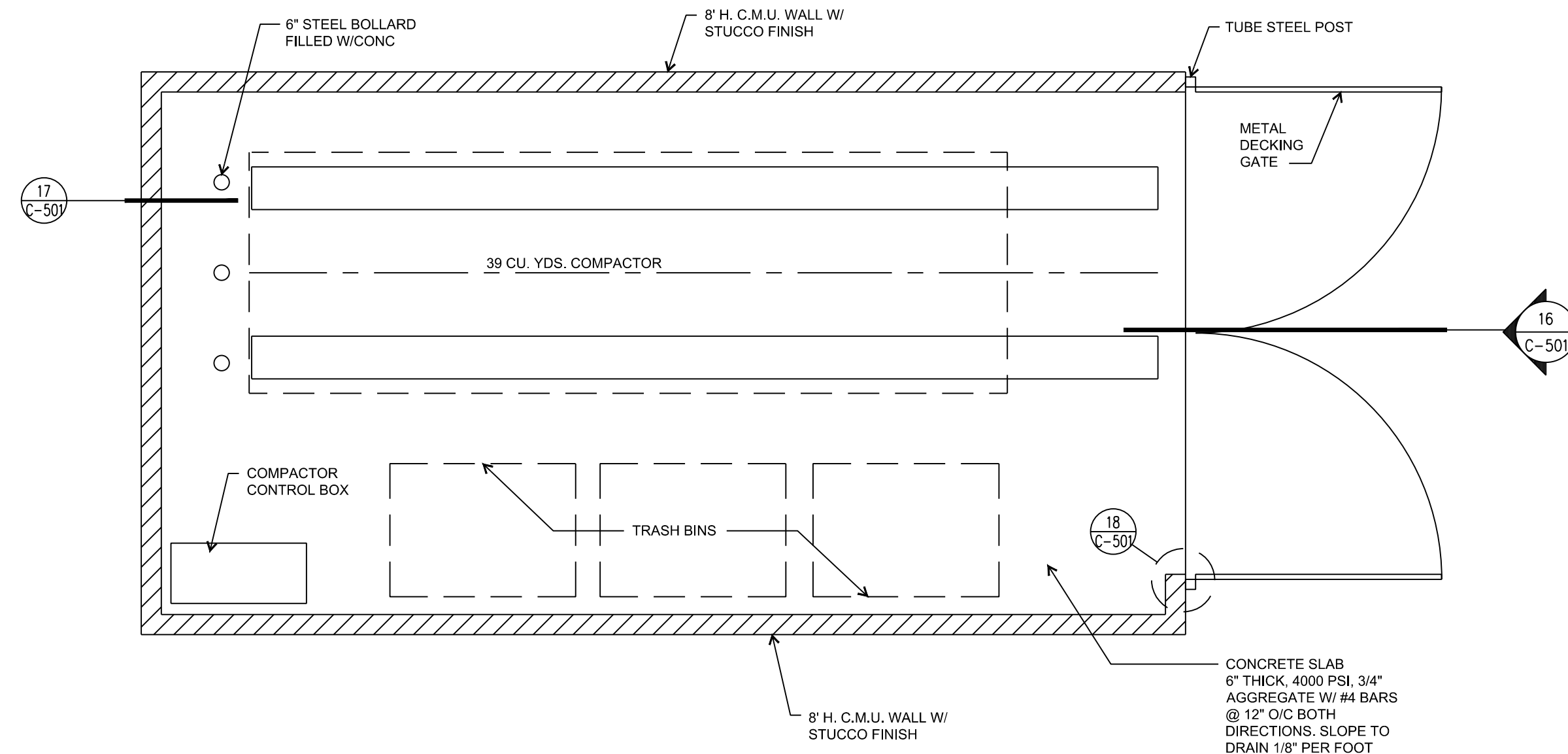
nm811
Know what's Below.
Call before you dig.

PROJECT NAME:
SONATA TRAILS UNIT 4 APARTMENTS

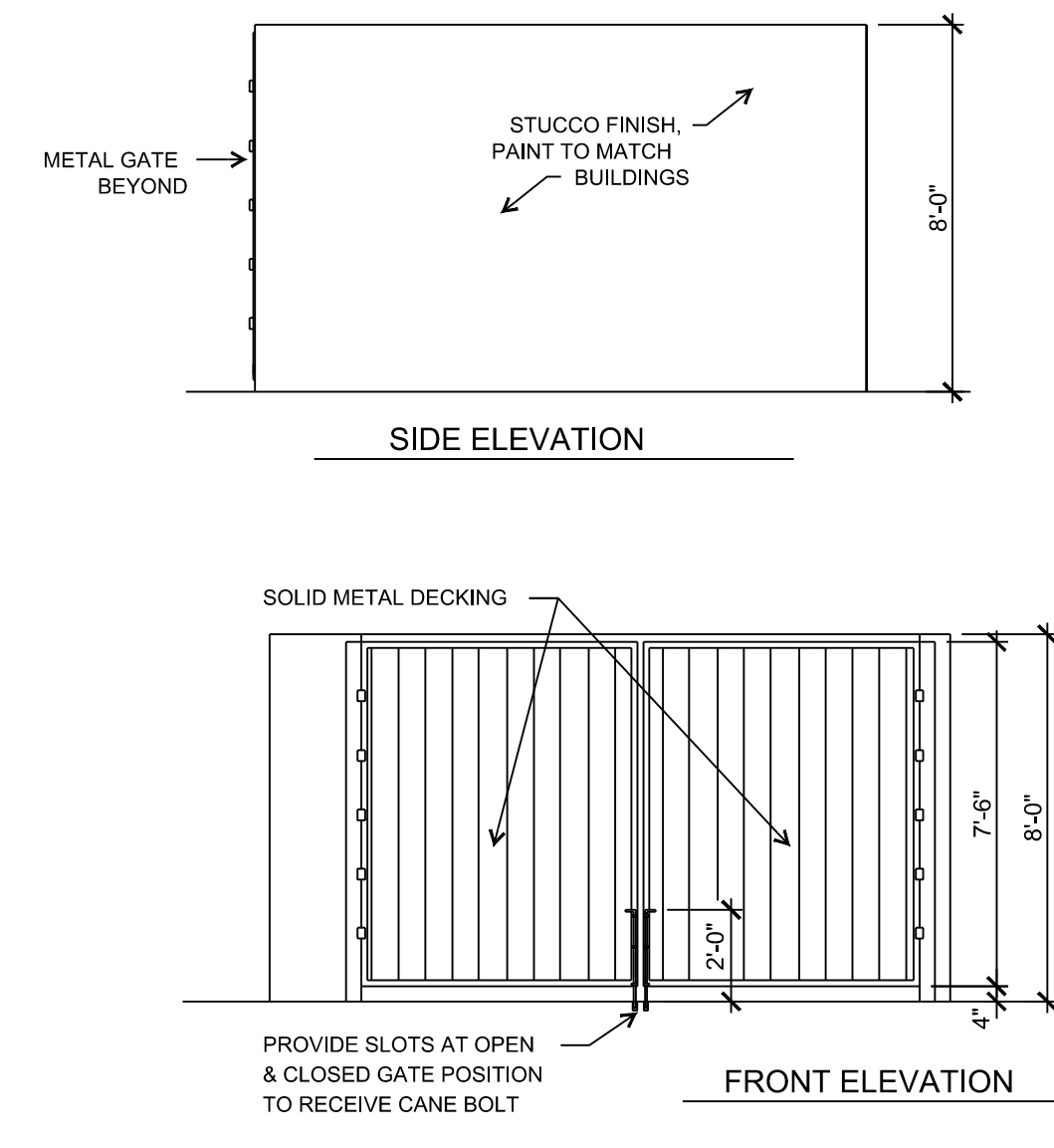
SHEET TITLE:
DETAIL

SUBMITTED FOR:
DRB SITE PLAN

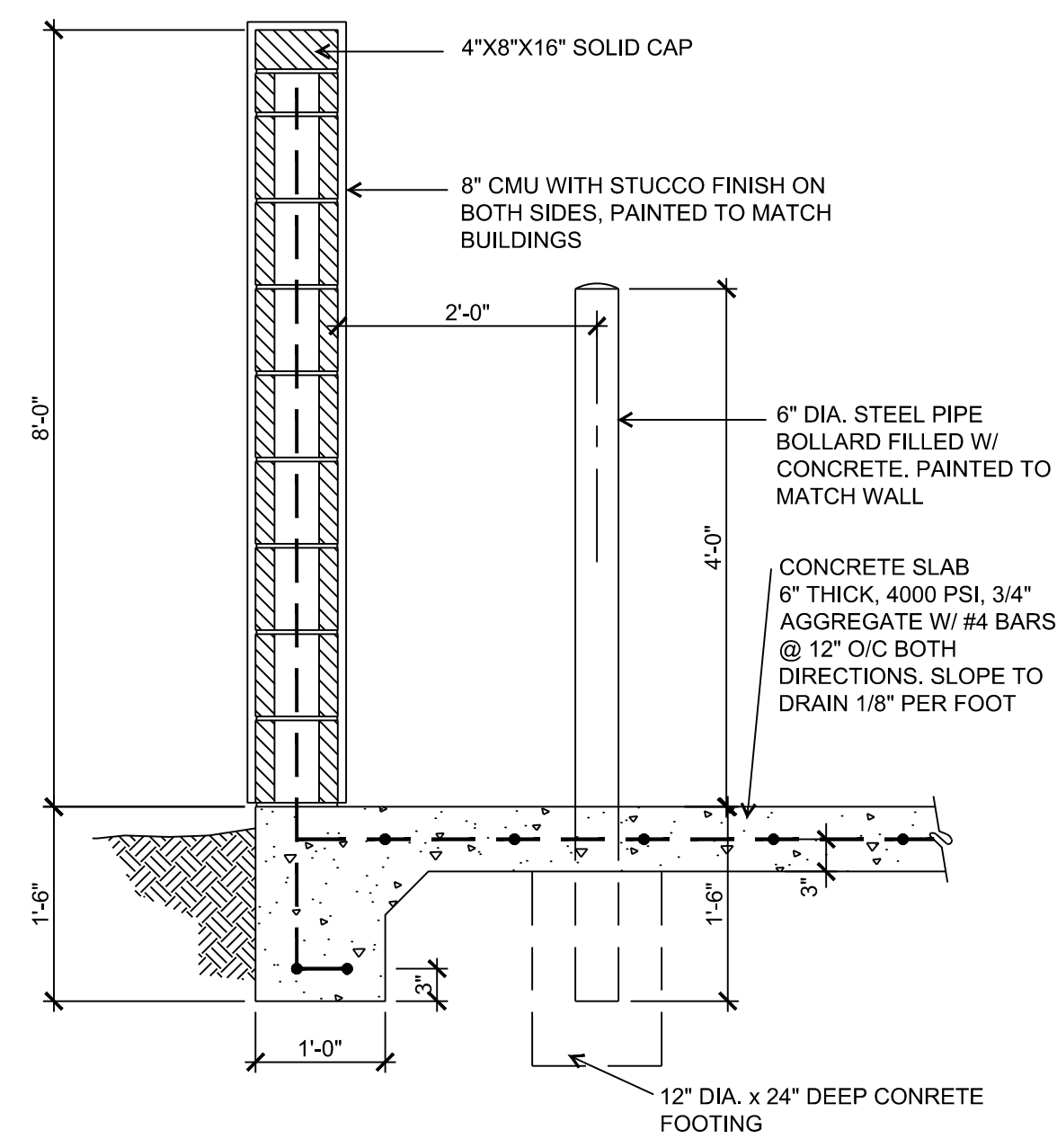
SHEET NUMBER:
C-500



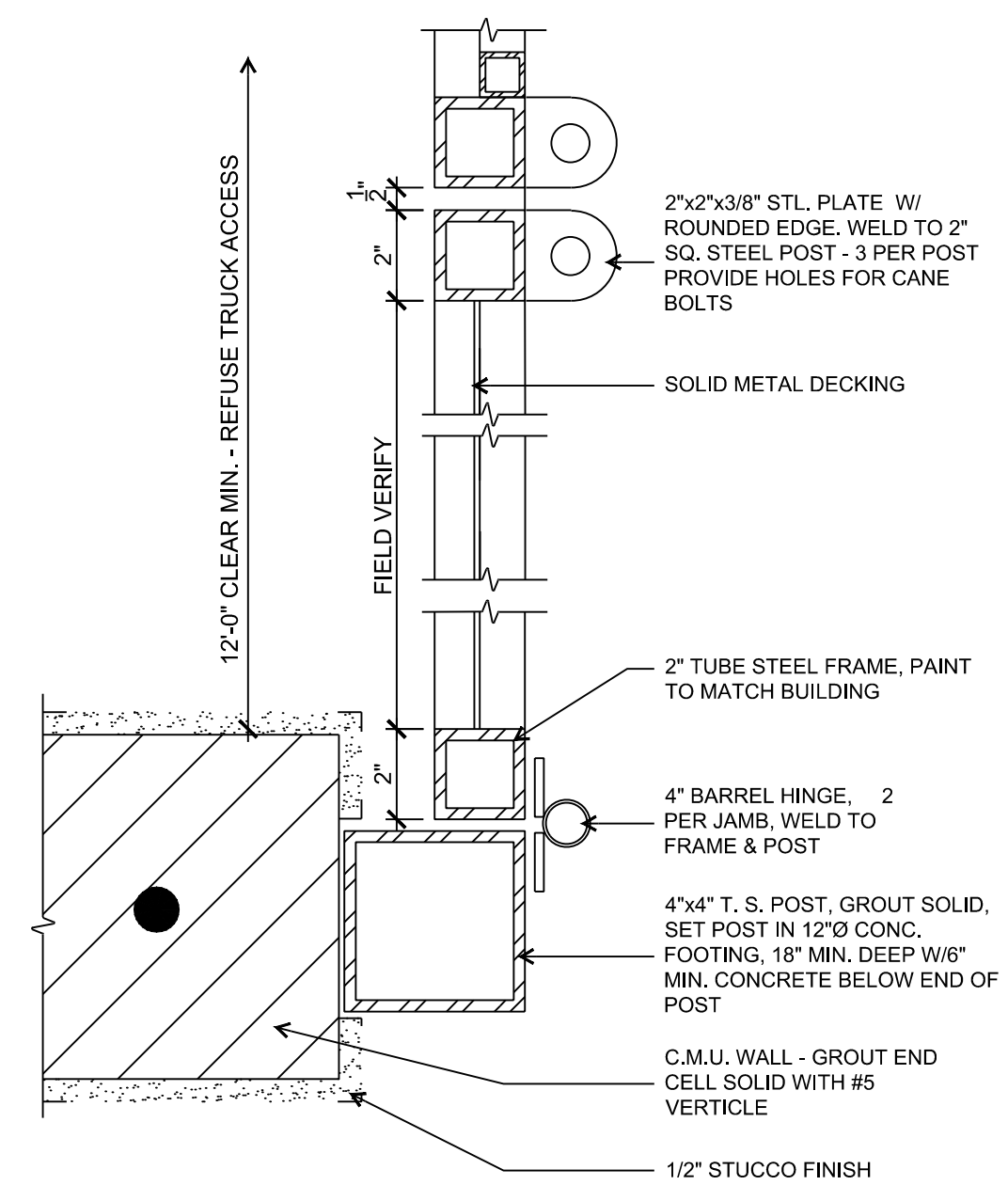
15 TRASS COMPACTOR YARD PLAN DETAIL
NO SCALE



16 TRASH COMPACTOR YARD ELEVATIONS DETAIL
NO SCALE



17 TRASH ENCLOSURE WALL DETAIL
NO SCALE



18 TRASH COMPACTOR YARD GATE DETAIL
NO SCALE

NAME: L:\Active Projects\04022 Sonata Trails Unit 4 Apartments\3. DWG\Onsite Plan Set\Sheets\04022 DETAIL C-501.dwg PLOT DATE: Jun 12, 2020 10:18am

DESIGNED BY: JS	REVISION
DRAWN BY: SG	
CHECKED BY: SG	
DATE: 6.12.2020	
 RESPEC COMMUNITY DESIGN SOLUTIONS 897 JEFFERSON STREET SUITE 101 WWW.RESPEC.COM PHONE: 805.953.9718	
 PRELIMINARY NOT FOR CONSTRUCTION 6/2020 THIS DRAWING IS INCOMPLETE AND NOT TO BE USED FOR CONSTRUCTION UNLESS IT IS STAMPED, SIGNED AND DATED.	
 Know what's Below. Call before you dig.	
PROJECT NAME:	SONATA TRAILS UNIT 4 APARTMENTS
SHEET TITLE:	DETAIL
SUBMITTED FOR:	DRB SITE PLAN
SHEET NUMBER:	C-501