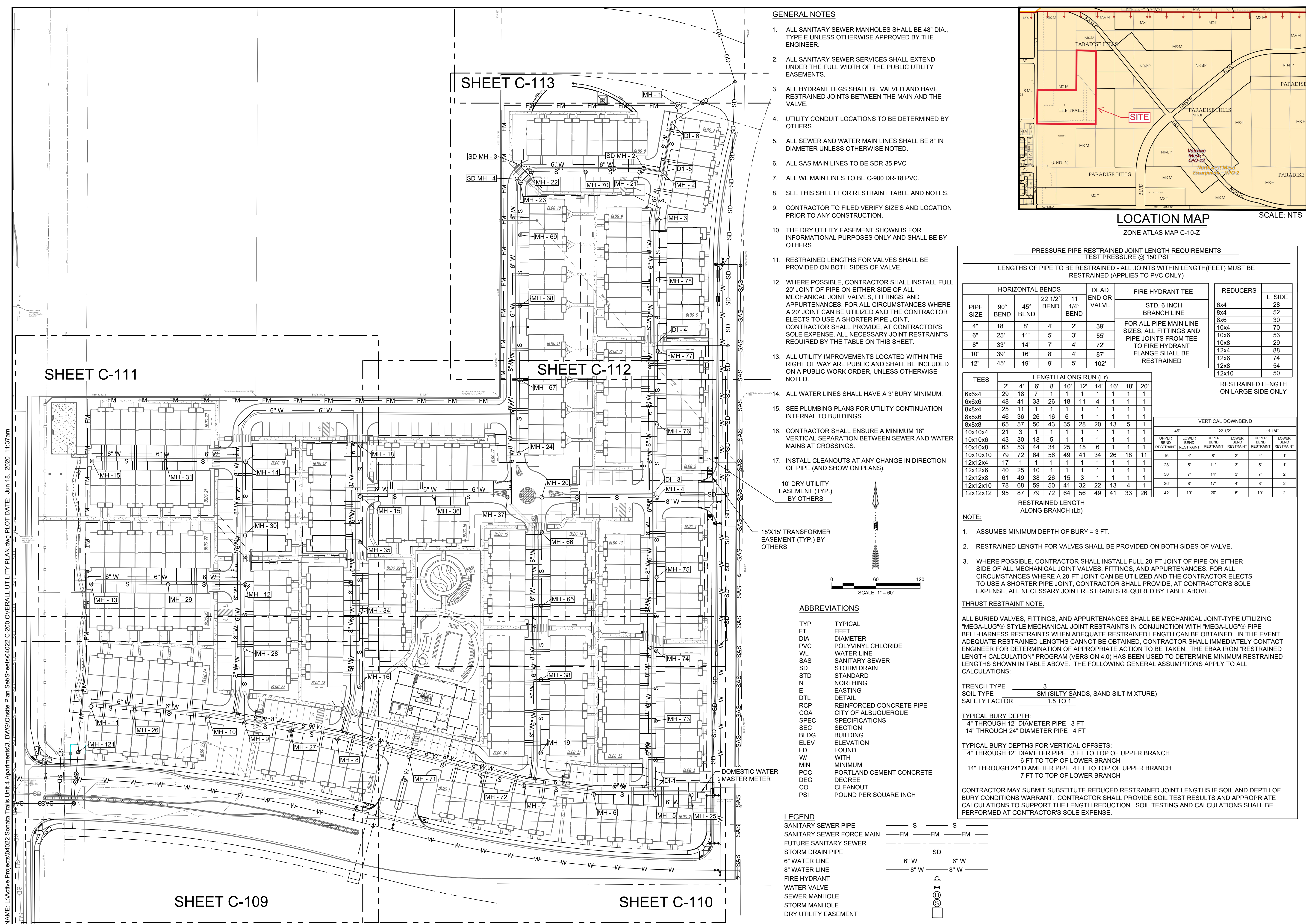


NAME: L:\Active Projects\04022 Sonata Trails Unit 4 Apartments3_DIV\Onsite Plan_Sat\Sheets\04022_C-200 OVERALL UTILITY PLAN.dwg PLOT DATE: Jun 18, 2020 11:37 am



GENERAL NOTES

- ALL SANITARY SEWER MANHOLES SHALL BE 48" DIA., TYPE E UNLESS OTHERWISE APPROVED BY THE ENGINEER.
- ALL SANITARY SEWER SERVICES SHALL EXTEND UNDER THE FULL WIDTH OF THE PUBLIC UTILITY EASEMENTS.
- ALL HYDRANT LEGS SHALL BE VALVED AND HAVE RESTRAINED JOINTS BETWEEN THE MAIN AND THE VALVE.
- UTILITY CONDUIT LOCATIONS TO BE DETERMINED BY OTHERS.
- ALL SEWER AND WATER MAIN LINES SHALL BE 8" IN DIAMETER UNLESS OTHERWISE NOTED.
- ALL SAS MAIN LINES TO BE SDR-35 PVC
- ALL WL MAIN LINES TO BE C-900 DR-18 PVC.
- SEE THIS SHEET FOR RESTRAINT TABLE AND NOTES.
- CONTRACTOR TO FILED VERIFY SIZE'S AND LOCATION PRIOR TO ANY CONSTRUCTION.
- THE DRY UTILITY EASEMENT SHOWN IS FOR INFORMATIONAL PURPOSES ONLY AND SHALL BE BY OTHERS.
- RESTRAINED LENGTHS FOR VALVES SHALL BE PROVIDED ON BOTH SIDES OF VALVE.
- WHERE POSSIBLE, CONTRACTOR SHALL INSTALL FULL 20' JOINT OF PIPE ON EITHER SIDE OF ALL MECHANICAL JOINT VALVES, FITTINGS, AND APPURTENANCES. FOR ALL CIRCUMSTANCES WHERE A 20' JOINT CAN BE UTILIZED AND THE CONTRACTOR ELECTS TO USE A SHORTER PIPE JOINT, CONTRACTOR SHALL PROVIDE, AT CONTRACTOR'S SOLE EXPENSE, ALL NECESSARY JOINT RESTRAINTS REQUIRED BY THE TABLE ON THIS SHEET.
- ALL UTILITY IMPROVEMENTS LOCATED WITHIN THE RIGHT OF WAY ARE PUBLIC AND SHALL BE INCLUDED ON A PUBLIC WORK ORDER, UNLESS OTHERWISE NOTED.
- ALL WATER LINES SHALL HAVE A 3' BURY MINIMUM.
- SEE PLUMBING PLANS FOR UTILITY CONTINUATION INTERNAL TO BUILDINGS.
- CONTRACTOR SHALL ENSURE A MINIMUM 18" VERTICAL SEPARATION BETWEEN SEWER AND WATER MAINS AT CROSSINGS.
- INSTALL CLEANOUTS AT ANY CHANGE IN DIRECTION OF PIPE (AND SHOW ON PLANS).

10' DRY UTILITY EASEMENT (TYP.) BY OTHERS

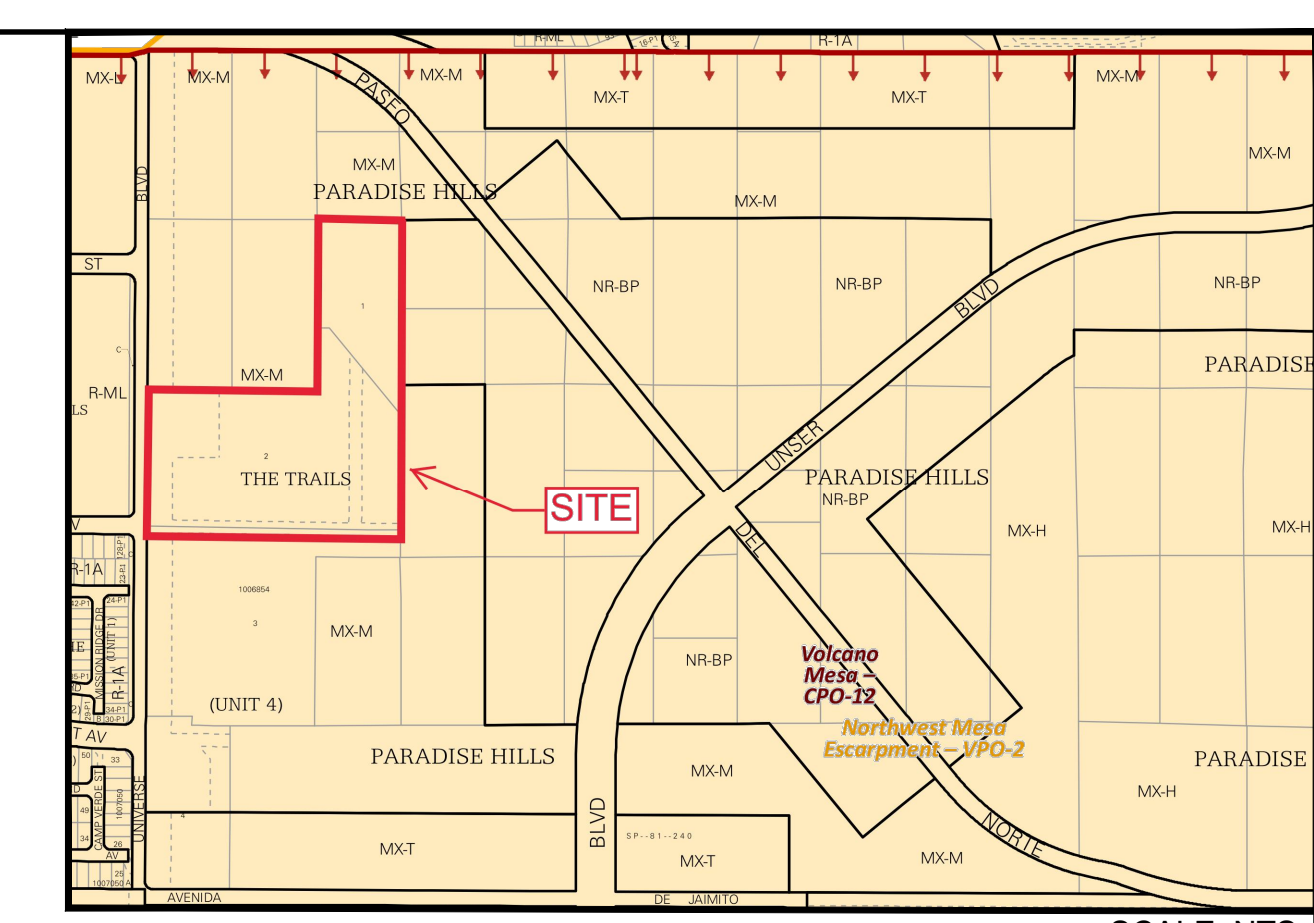
15'X15' TRANSFORMER EASEMENT (TYP.) BY OTHERS

ABBREVIATIONS

TYP	TYPICAL
FT	FEET
DIA	DIAMETER
PVC	POLYVINYL CHLORIDE
WL	WATER LINE
SAS	SANITARY SEWER
SD	STORM DRAIN
STD	STANDARD
N	NORTHING
E	EASTING
DTL	DETAIL
RCP	REINFORCED CONCRETE PIPE
COA	CITY OF ALBUQUERQUE
SPEC	SPECIFICATIONS
SEC	SECTION
BLDG	BUILDING
ELEV	ELEVATION
FD	FOUND
W	WITH
MIN	MINIMUM
PCC	PORTLAND CEMENT CONCRETE
DEG	DEGREE
CO	CLEANOUT
PSI	POUND PER SQUARE INCH

LEGEND

SANITARY SEWER PIPE	— S — S —
SANITARY SEWER FORCE MAIN	— FM — FM — FM —
FUTURE SANITARY SEWER	— S — S —
STORM DRAIN PIPE	— SD — SD —
6" WATER LINE	— 6" W — 6" W —
8" WATER LINE	— 8" W — 8" W —
FIRE HYDRANT	— FH — FH —
WATER VALVE	— V — V —
SEWER MANHOLE	— MH — MH —
STORM MANHOLE	— SM — SM —
DRY UTILITY EASEMENT	— DUE — DUE —



LOCATION MAP
SCALE: NTS

PRESSURE PIPE RESTRAINED JOINT LENGTH REQUIREMENTS
TEST PRESSURE @ 150 PSI

LENGTHS OF PIPE TO BE RESTRAINED - ALL JOINTS WITHIN LENGTH(FEET) MUST BE RESTRAINED (APPLIES TO PVC ONLY)

PIPE SIZE	HORIZONTAL BENDS				DEAD END OR VALVE	FIRE HYDRANT TEE	REDUCERS	
	90° BEND	45° BEND	22 1/2° BEND	11 1/4° BEND			STD. 6-INCH BRANCH LINE	L. SIDE
4"	18"	8"	4"	2"	39'	FOR ALL PIPE MAIN LINE SIZES, ALL FITTINGS AND PIPE JOINTS FROM TEE TO FIRE HYDRANT FLANGE SHALL BE RESTRAINED	6x4	28
6"	25"	11"	5"	3"	55'		8x4	52
8"	33"	14"	7"	4"	72'		8x6	30
10"	39"	16"	8"	4"	87'		10x4	70
12"	45"	19"	9"	5"	102'		10x6	53
							10x8	29
							12x4	88
							12x6	74
							12x8	54
							12x10	50

RESTRAINED LENGTH ON LARGE SIDE ONLY

TEES	LENGTH ALONG RUN (Lr)										VERTICAL DOWNBEND					
	2'	4'	6'	8'	10'	12'	14'	16'	18'	20'	45°		22 1/2°		11 1/4°	
6x6x4	29	18	7	1	1	1	1	1	1	1	UPPER RESTRAINT	LOWER RESTRAINT	UPPER RESTRAINT	LOWER RESTRAINT	UPPER RESTRAINT	LOWER RESTRAINT
6x6x6	48	41	33	26	18	11	4	1	1	1	23'	5'	11'	3'	5'	1'
8x8x4	25	11	1	1	1	1	1	1	1	1	30'	7'	14'	3'	7'	2'
8x8x6	46	36	26	16	6	1	1	1	1	1	36'	5'	17'	4'	8'	2'
8x8x8	65	57	50	43	35	28	20	13	5	1	42'	10'	20'	5'	10'	2'
10x10x4	21	3	1	1	1	1	1	1	1	1						
10x10x6	43	30	18	5	1	1	1	1	1	1						
10x10x8	63	53	44	34	25	15	6	1	1	1						
10x10x10	79	72	64	56	49	41	34	26	18	11						
12x12x4	17	1	1	1	1	1	1	1	1	1						
12x12x6	40	25	10	1	1	1	1	1	1	1						
12x12x8	61	49	38	26	15	3	1	1	1	1						
12x12x10	78	68	59	50	41	32	22	13	4	1						
12x12x12	95	87	79	72	64	56	49	41	33	26						

NOTE:

- ASSUMES MINIMUM DEPTH OF BURY = 3 FT.
- RESTRAINED LENGTH FOR VALVES SHALL BE PROVIDED ON BOTH SIDES OF VALVE.
- WHERE POSSIBLE, CONTRACTOR SHALL INSTALL FULL 20-FT JOINT OF PIPE ON EITHER SIDE OF ALL MECHANICAL JOINT VALVES, FITTINGS, AND APPURTENANCES. FOR ALL CIRCUMSTANCES WHERE A 20-FT JOINT CAN BE UTILIZED AND THE CONTRACTOR ELECTS TO USE A SHORTER PIPE JOINT, CONTRACTOR SHALL PROVIDE, AT CONTRACTOR'S SOLE EXPENSE, ALL NECESSARY JOINT RESTRAINTS REQUIRED BY TABLE ABOVE.

THRUST RESTRAINT NOTE:

ALL BURIED VALVES, FITTINGS, AND APPURTENANCES SHALL BE MECHANICAL JOINT-TYPE UTILIZING "MEGA-LUG" STYLE MECHANICAL JOINT RESTRAINTS IN CONJUNCTION WITH "MEGA-LUG" PIPE "BELL-HARNES" RESTRAINTS WHEN ADEQUATE RESTRAINED LENGTH CAN BE OBTAINED. IN THE EVENT ADEQUATE RESTRAINED LENGTHS CANNOT BE OBTAINED, CONTRACTOR SHALL IMMEDIATELY CONTACT ENGINEER FOR DETERMINATION OF APPROPRIATE ACTION TO BE TAKEN. THE EBAA IRON "RESTRAINED LENGTH CALCULATION" PROGRAM (VERSION 4.0) HAS BEEN USED TO DETERMINE MINIMUM RESTRAINED LENGTHS SHOWN IN TABLE ABOVE. THE FOLLOWING GENERAL ASSUMPTIONS APPLY TO ALL CALCULATIONS:

TRENCH TYPE: 3
SOIL TYPE: SM (SILTY SANDS, SAND SILT MIXTURE)
SAFETY FACTOR: 1.5 TO 1

TYPICAL BURY DEPTH:
4" THROUGH 12" DIAMETER PIPE: 3 FT
14" THROUGH 24" DIAMETER PIPE: 4 FT

TYPICAL BURY DEPTHS FOR VERTICAL OFFSETS:
4" THROUGH 12" DIAMETER PIPE: 3 FT TO TOP OF UPPER BRANCH
6 FT TO TOP OF LOWER BRANCH
14" THROUGH 24" DIAMETER PIPE: 4 FT TO TOP OF UPPER BRANCH
7 FT TO TOP OF LOWER BRANCH

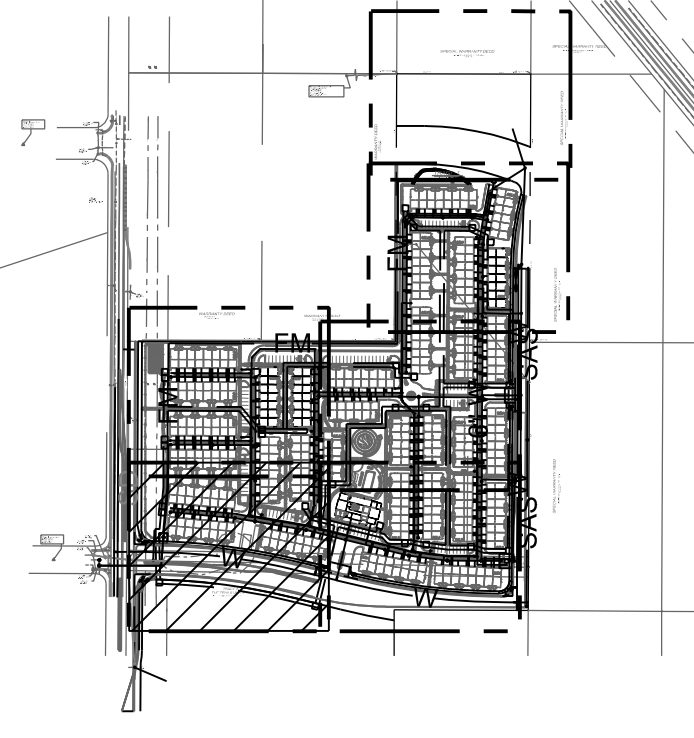
CONTRACTOR MAY SUBMIT SUBSTITUTE REDUCED RESTRAINED JOINT LENGTHS IF SOIL AND DEPTH OF BURY CONDITIONS WARRANT. CONTRACTOR SHALL PROVIDE SOIL TEST RESULTS AND APPROPRIATE CALCULATIONS TO SUPPORT THE LENGTH REDUCTION. SOIL TESTING AND CALCULATIONS SHALL BE PERFORMED AT CONTRACTOR'S SOLE EXPENSE.

DESIGNED BY: RESPEC	CHECKED BY: RESPEC	DATE: 6.12.2020
DRAWN BY: RESPEC	PROJECT NAME: SONATA TRAILS UNIT 4 APARTMENTS	
REVISION:	SHEET TITLE: CONCEPTUAL OVERALL UTILITY PLAN	
	SUBMITTED FOR: DRB SITE PLAN	
	SHEET NUMBER: C-108	

SHEET C-111

SHEET C-112

SHEET C-110



KEY MAP SCALE: NTS

WATER CONSTRUCTION NOTES

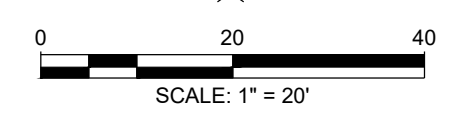
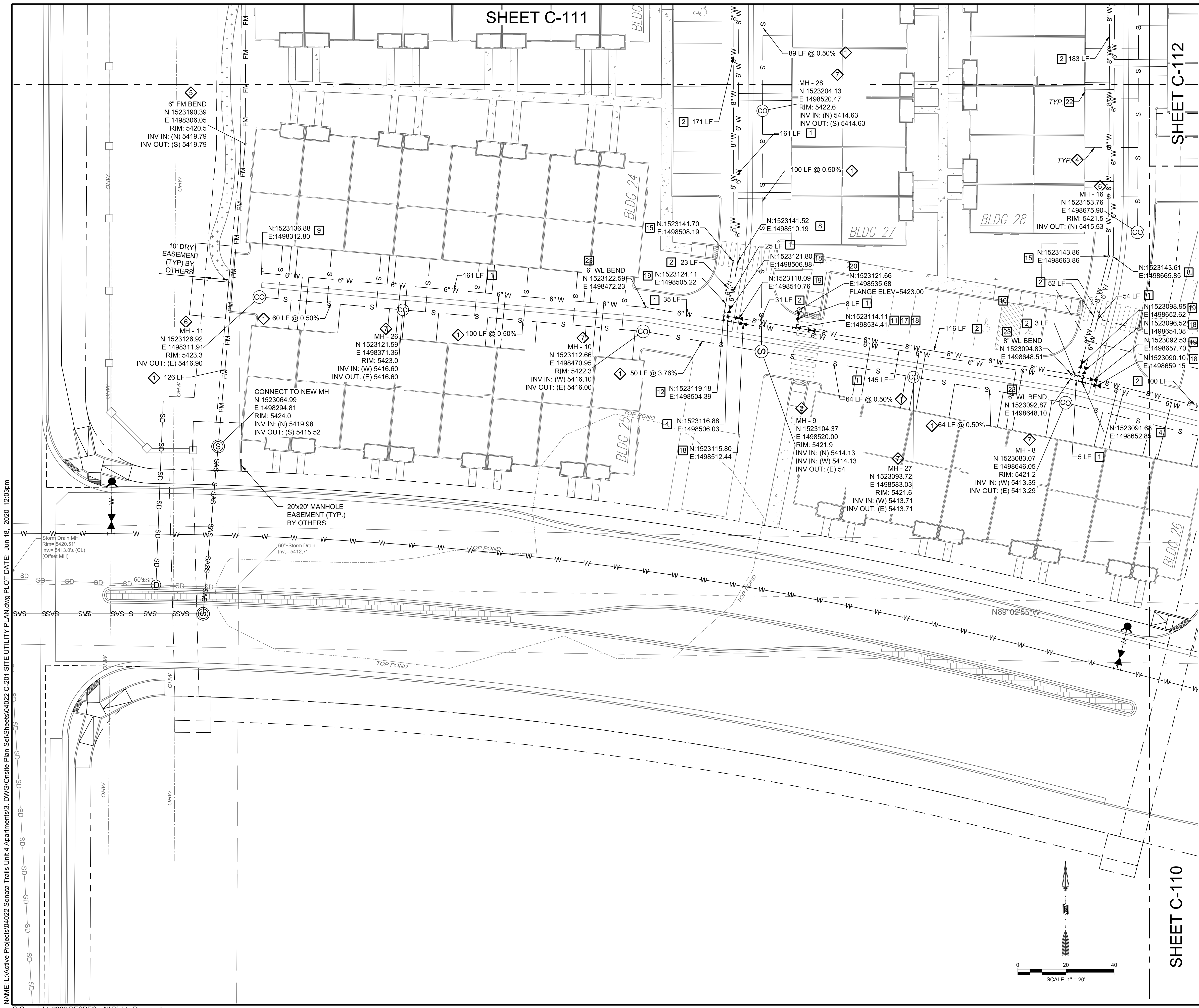
I.D.#	DESCRIPTION
1	INSTALL 6" WATERLINE PER STD. SPEC. SEC. 801
2	INSTALL 8" WATERLINE PER STD. SPEC. SEC. 801
3	CONNECT NEW WATERLINE TO EXISTING WATERLINE (NON PRESSURIZED CONNECTION)
4	INSTALL 6" TEE
5	INSTALL 6" 90° BEND
6	INSTALL 6" 45° BEND
7	INSTALL 6" 22 1/2° BEND
8	INSTALL 6" 11 1/2° BEND
9	INSTALL 6" CAP
10	INSTALL 8" TEE
11	INSTALL 8" X 6" TEE
12	INSTALL 8" 90° BEND
13	INSTALL 8" 45° BEND
14	INSTALL 8" 22 1/2° BEND
15	INSTALL 8" 11 1/2° BEND
16	INSTALL 8" CAP
17	"MEG A LUG" ALL FITTINGS AND JOINTS FROM TEE TO FIRE HYDRANT
18	INSTALL 6" GATE VALVE AND VALVE BOX, PER COA STD. DTL. 2326, 2328, AND/OR 2329
19	INSTALL 8" GATE VALVE AND VALVE BOX, PER COA STD. DTL. 2326, 2328
20	INSTALL FIRE HYDRANT, PER COA STD. DTL. 2340
21	INSTALL SINGLE WATER SERVICE CONNECTION
22	INSTALL DOUBLE WATER SERVICE CONNECTION
23	DEFLECT PIPE

SEWER CONSTRUCTION NOTES

I.D.#	DESCRIPTION
1	INSTALL 6" SEWER PER STD. SPEC. SEC. 901
2	INSTALL 4" DIA. SEWER MANHOLE TYPE "E", PER COA STD. DTL. 2102
3	INSTALL 8" DIA. SEWER MANHOLE TYPE "E", PER COA STD. DTL. 2102
4	INSTALL 4" SEWER SERVICE, PER COA STD. DTL. 2125. INSTALL DOUBLE CLEANOUT 5' FROM BUILDING. SEE DETAIL ON SHEET C-500.
5	DEFLECT PIPE
6	INSTALL SINGLE CLEANOUT PER DETAIL SHEET C-500
7	INSTALL DOUBLE CLEANOUT PER DETAIL SHEET C-500

STORM DRAIN CONSTRUCTION NOTES

I.D.#	DESCRIPTION
1	INSTALL 24" RCP STORM DRAIN PIPE
2	INSTALL 30" RCP STORM DRAIN PIPE
3	INSTALL TYPE D CATCH BASIN SINGLE GRATE
4	INSTALL CATCH BASIN DOUBLE GRATE
5	INSTALL 4" DIA. MANHOLE TYPE "E", PER COA STD. DTL. 2102

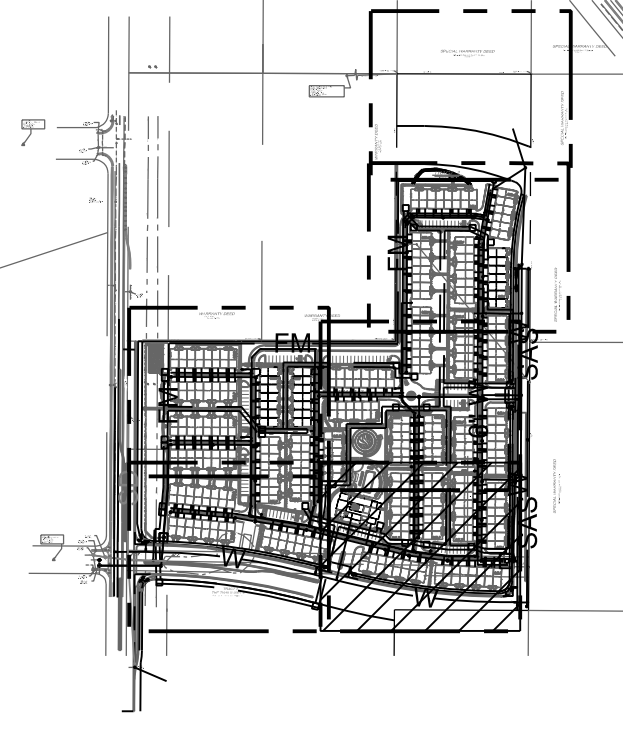
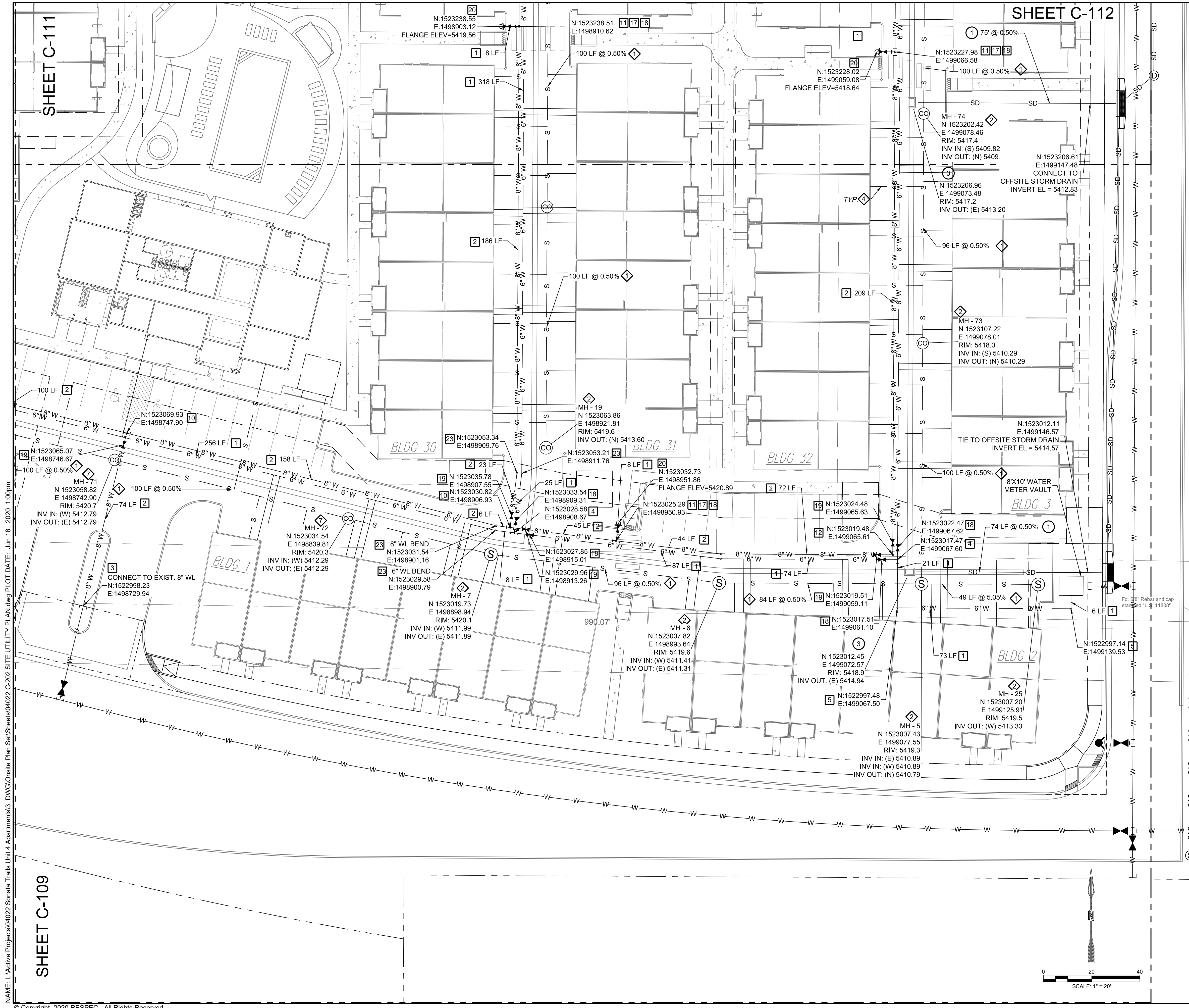


SCALE: 1" = 20'

NAME: L:\Active Projects\04022_Sonata Trails Unit 4_Apartments3_DWG\OnSite Plan Set\Sheets\04022_C-201_SITE UTILITY PLAN.dwg PLOT DATE: Jun 18, 2020 12:03pm

© Copyright 2020 RESPEC - All Rights Reserved

DESIGNED: JDV	DRAWN: JDV	CHECKED: SG	DATE: 6.12.2020
<p>RESPEC COMMUNITY DESIGN SOLUTIONS 6971 JEFFERSON STREET, SUITE 100 DENVER, CO 80221 WWW.RESPEC.COM PHONE: (303) 553-9718</p>			
<p>PRELIMINARY NOT FOR CONSTRUCTION 6/2020</p> <p>THIS DRAWING IS INCOMPLETE AND NOT TO BE USED FOR CONSTRUCTION UNLESS IT IS STAMPED, SIGNED AND DATED.</p>			
<p>Know what's below. Call before you dig.</p>			
PROJECT NAME:		SONATA TRAILS UNIT 4 APARTMENTS	
SHEET TITLE:		CONCEPTUAL SITE UTILITY PLAN	
SUBMITTED FOR:		DRB SITE PLAN	
SHEET NUMBER:		C-109	



WATER CONSTRUCTION NOTES

I.D.#	DESCRIPTION
1	INSTALL 6" WATERLINE PER STD. SPEC. SEC. 801
2	INSTALL 8" WATERLINE PER STD. SPEC. SEC. 801
3	CONNECT NEW WATERLINE TO EXISTING WATERLINE (NON PRESSURIZED CONNECTION)
4	INSTALL 6" TEE
5	INSTALL 6" 90° BEND
6	INSTALL 6" 45° BEND
7	INSTALL 6" 22 1/2° BEND
8	INSTALL 6" 11 1/2° BEND
9	INSTALL 6" CAP
10	INSTALL 8" TEE
11	INSTALL 8" X 6" TEE
12	INSTALL 8" 90° BEND
13	INSTALL 8" 45° BEND
14	INSTALL 8" 22 1/2° BEND
15	INSTALL 8" 11 1/2° BEND
16	INSTALL 8" CAP
17	"MEG A LUG" ALL FITTINGS AND JOINTS FROM TEE TO FIRE HYDRANT
18	INSTALL 6" GATE VALVE AND VALVE BOX, PER COA STD. DTL. 2326, 2328, AND/OR 2329
19	INSTALL 8" GATE VALVE AND VALVE BOX, PER COA STD. DTL. 2326, 2328
20	INSTALL FIRE HYDRANT, PER COA STD. DTL. 2340
21	INSTALL SINGLE WATER SERVICE CONNECTION
22	INSTALL DOUBLE WATER SERVICE CONNECTION
23	DEFLECT PIPE

SEWER CONSTRUCTION NOTES

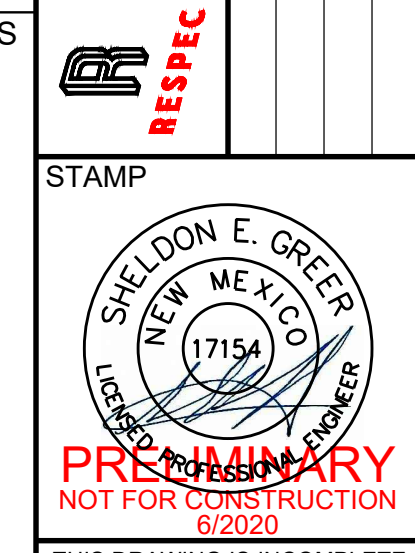
I.D.#	DESCRIPTION
1	INSTALL 6" SEWER PER STD. SPEC. SEC. 901
2	INSTALL 4" DIA. SEWER MANHOLE TYPE "E", PER COA STD. DTL. 2102
3	INSTALL 8" DIA. SEWER MANHOLE TYPE "E", PER COA STD. DTL. 2102
4	INSTALL 4" SEWER SERVICE, PER COA STD. DTL. 2125. INSTALL DOUBLE CLEANOUT 5' FROM BUILDING. SEE DETAIL ON SHEET C-500.
5	DEFLECT PIPE
6	INSTALL SINGLE CLEANOUT PER DETAIL SHEET C-500
7	INSTALL DOUBLE CLEANOUT PER DETAIL SHEET C-500

STORM DRAIN CONSTRUCTION NOTES

I.D.#	DESCRIPTION
1	INSTALL 24" RCP STORM DRAIN PIPE
2	INSTALL 30" RCP STORM DRAIN PIPE
3	INSTALL TYPE D CATCH BASIN SINGLE GRATE
4	INSTALL CATCH BASIN DOUBLE GRATE
5	INSTALL 4" DIA. MANHOLE TYPE "E", PER COA STD. DTL. 2102

PROJECT NAME: SONATA TRAILS UNIT 4 APARTMENTS
 SHEET TITLE: CONCEPTUAL SITE UTILITY PLAN
 DRB SITE PLAN
 SHEET NUMBER: C-110

DESIGNED: JDV	CHECKED: SG	DATE: 6.12.2020
DRAWN: JDV	CHECKED: SG	



NAME: L:\Active Projects\04022 Sonata Trails Unit 4 Apartments3.DWG\Onsite Plan_Sat\Sheets\04022 C-202 SITE UTILITY PLAN.dwg PLOT DATE: Jun 18, 2020 1:00pm

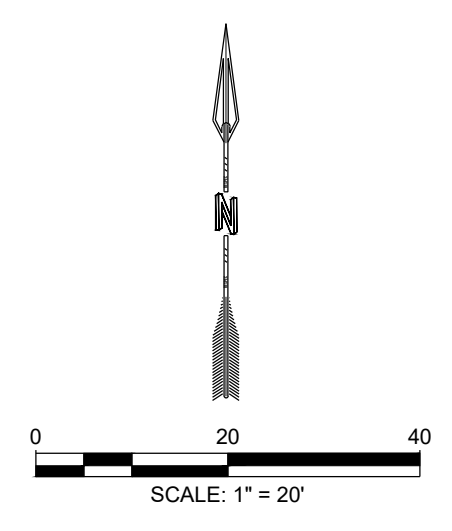
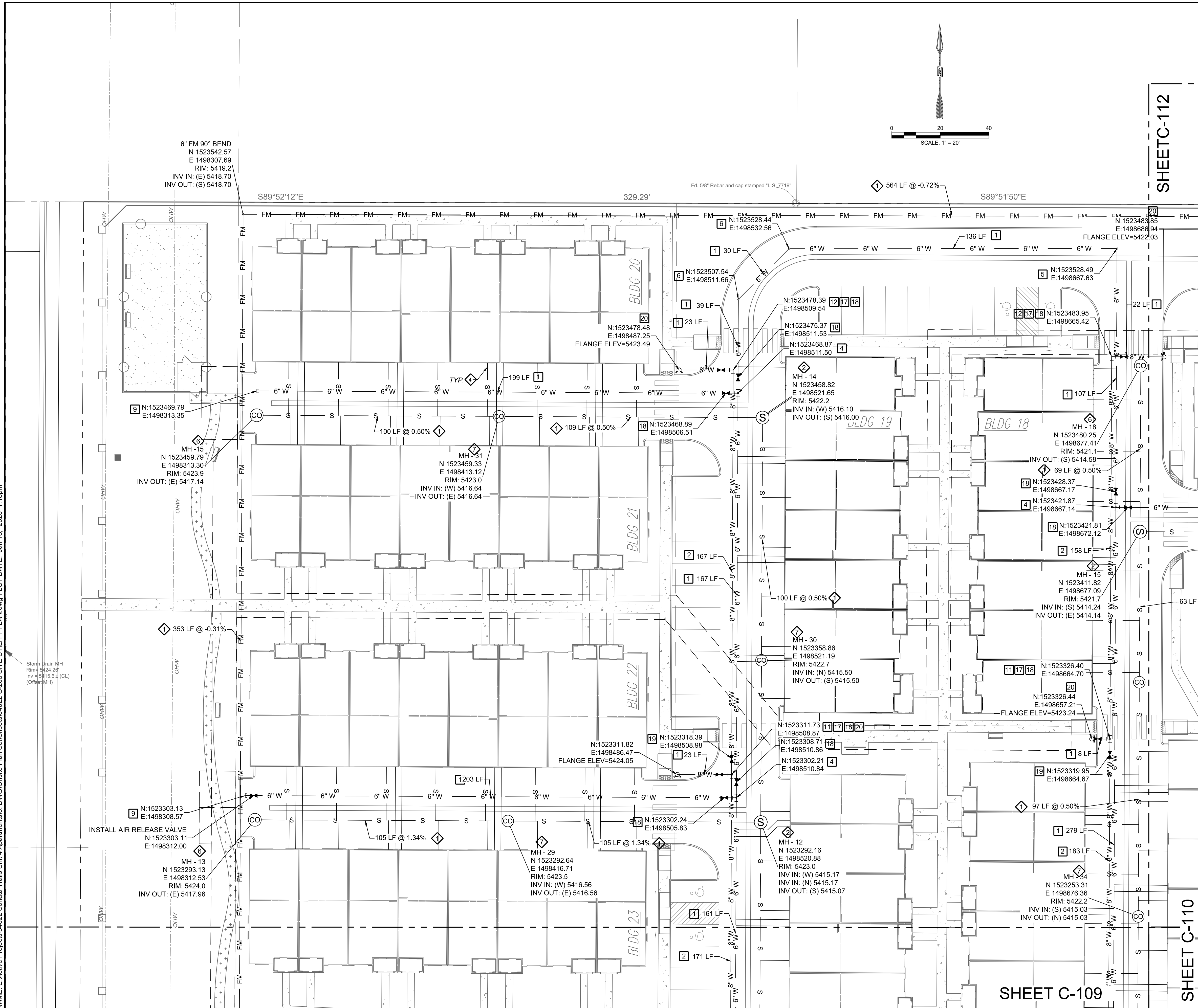
SHEET C-109

SHEET C-111

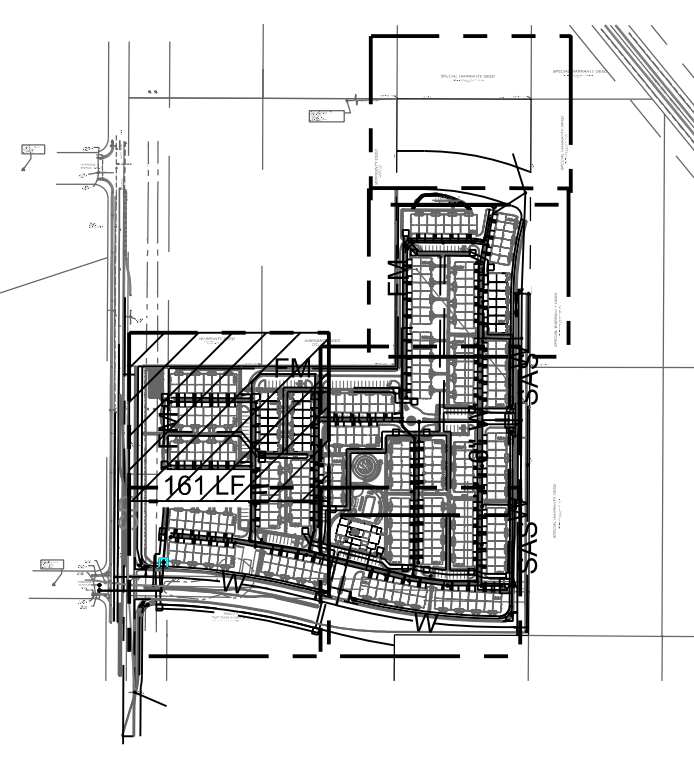
SHEET C-112



NAME: L:\Active Projects\04022 Sonata Trails Unit 4 Apartments3.DWG\Onsite Plan Set\Sheets\04022 C-203 SITE UTILITY PLAN.dwg PLOT DATE: Jun 18, 2020 1:18pm



SHEET C-112



KEY MAP SCALE: NTS

WATER CONSTRUCTION NOTES

I.D.#	DESCRIPTION
1	INSTALL 6" WATERLINE PER STD. SPEC. SEC. 801
2	INSTALL 8" WATERLINE PER STD. SPEC. SEC. 801
3	CONNECT NEW WATERLINE TO EXISTING WATERLINE (NON PRESSURIZED CONNECTION)
4	INSTALL 6" TEE
5	INSTALL 6" 90° BEND
6	INSTALL 6" 45° BEND
7	INSTALL 6" 22 1/2° BEND
8	INSTALL 6" 11 1/2° BEND
9	INSTALL 6" CAP
10	INSTALL 8" TEE
11	INSTALL 8" X 6" TEE
12	INSTALL 8" 90° BEND
13	INSTALL 8" 45° BEND
14	INSTALL 8" 22 1/2° BEND
15	INSTALL 8" 11 1/2° BEND
16	INSTALL 8" CAP
17	*MEG A LUG* ALL FITTINGS AND JOINTS FROM TEE TO FIRE HYDRANT
18	INSTALL 6" GATE VALVE AND VALVE BOX, PER COA STD. DTL. 2326, 2328, AND/OR 2329
19	INSTALL 8" GATE VALVE AND VALVE BOX, PER COA STD. DTL. 2326, 2328
20	INSTALL FIRE HYDRANT, PER COA STD. DTL. 2340
21	INSTALL SINGLE WATER SERVICE CONNECTION
22	INSTALL DOUBLE WATER SERVICE CONNECTION
23	DEFLECT PIPE

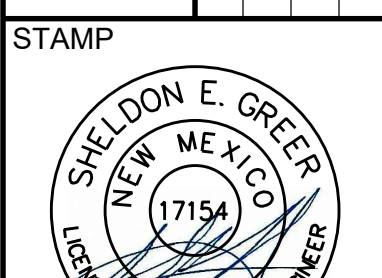
SEWER CONSTRUCTION NOTES

I.D.#	DESCRIPTION
1	INSTALL 6" SEWER PER STD. SPEC. SEC. 901
2	INSTALL 4" DIA. SEWER MANHOLE TYPE "E", PER COA STD. DTL. 2102
3	INSTALL 8" DIA. SEWER MANHOLE TYPE "E", PER COA STD. DTL. 2102
4	INSTALL 4" SEWER SERVICE, PER COA STD. DTL. 2125. INSTALL DOUBLE CLEANOUT 5' FROM BUILDING. SEE DETAIL ON SHEET C-500.
5	DEFLECT PIPE
6	INSTALL SINGLE CLEANOUT PER DETAIL SHEET C-500
7	INSTALL DOUBLE CLEANOUT PER DETAIL SHEET C-500

STORM DRAIN CONSTRUCTION NOTES

I.D.#	DESCRIPTION
1	INSTALL 24" RCP STORM DRAIN PIPE
2	INSTALL 30" RCP STORM DRAIN PIPE
3	INSTALL TYPE D CATCH BASIN SINGLE GRATE
4	INSTALL CATCH BASIN DOUBLE GRATE
5	INSTALL 4" DIA. MANHOLE TYPE "E", PER COA STD. DTL. 2102

DESIGNED BY	DRAWN BY	CHECKED BY	DATE
JDV	JDV	SG	6.12.2020



PRELIMINARY
NOT FOR CONSTRUCTION
6/2020

THIS DRAWING IS INCOMPLETE AND NOT TO BE USED FOR CONSTRUCTION UNLESS IT IS STAMPED, SIGNED AND DATED

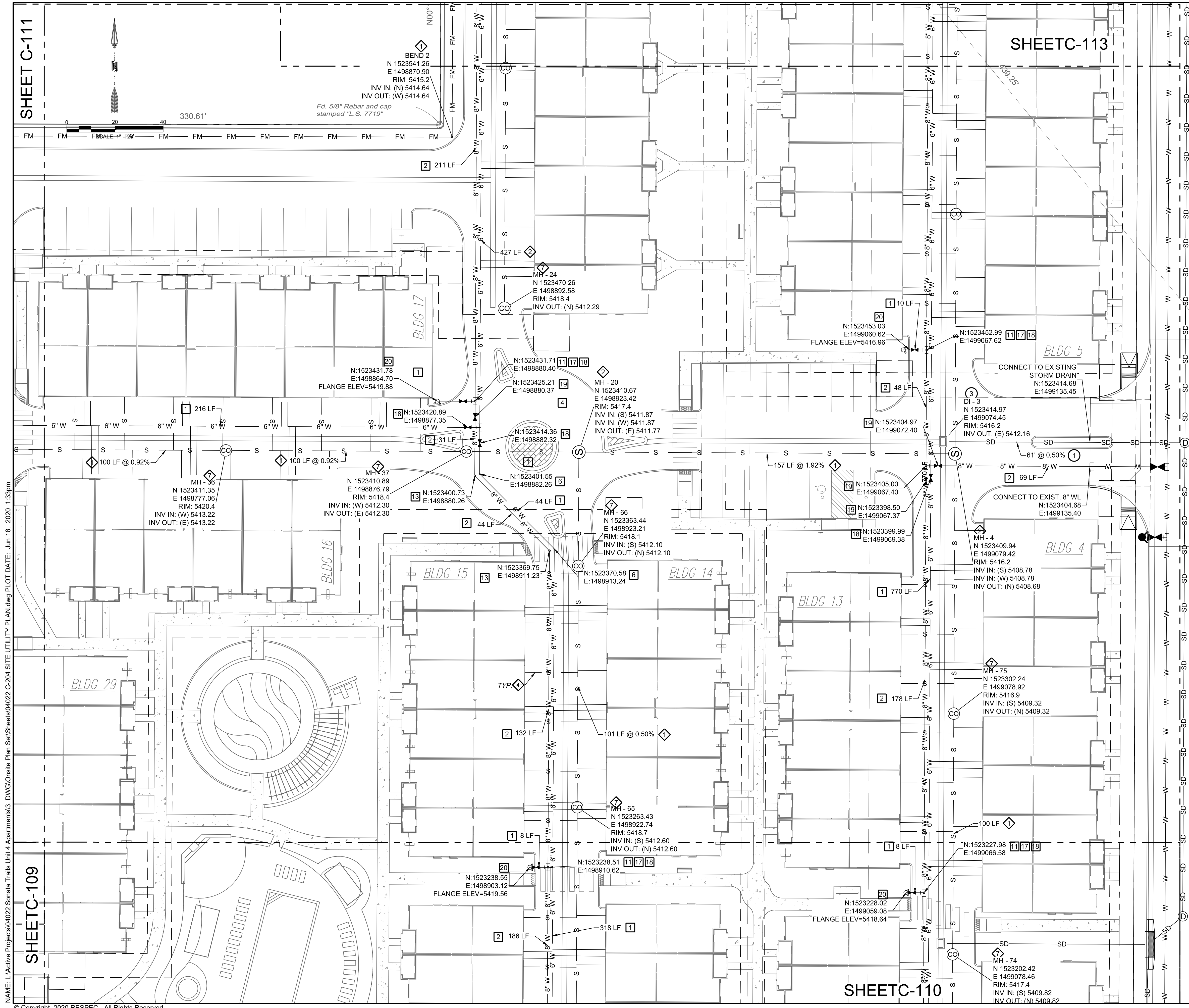


PROJECT NAME:
SONATA TRAILS UNIT 4 APARTMENTS

SHEET TITLE:
CONCEPTUAL SITE UTILITY PLAN

SUBMITTED FOR:
DRB SITE PLAN

SHEET NUMBER:
C-111

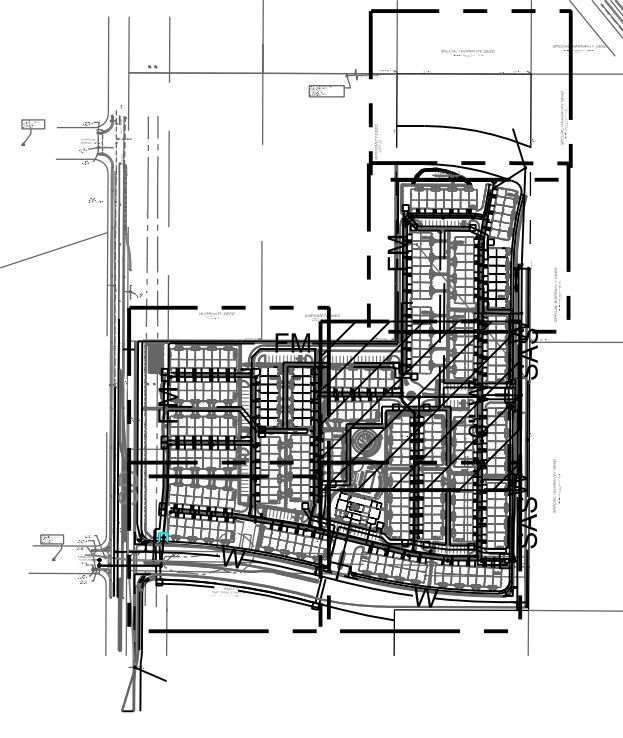


SHEET C-111

SHEET C-109

SHEET C-113

SHEET C-110



KEY MAP SCALE: NTS

WATER CONSTRUCTION NOTES

I.D.#	DESCRIPTION
1	INSTALL 6" WATERLINE PER STD. SPEC. SEC. 801
2	INSTALL 8" WATERLINE PER STD. SPEC. SEC. 801
3	CONNECT NEW WATERLINE TO EXISTING WATERLINE (NON PRESSURIZED CONNECTION)
4	INSTALL 6" TEE
5	INSTALL 6" 90° BEND
6	INSTALL 6" 45° BEND
7	INSTALL 6" 22 1/2° BEND
8	INSTALL 6" 11 1/2° BEND
9	INSTALL 6" CAP
10	INSTALL 8" TEE
11	INSTALL 8" X 6" TEE
12	INSTALL 8" 90° BEND
13	INSTALL 8" 45° BEND
14	INSTALL 8" 22 1/2° BEND
15	INSTALL 8" 11 1/2° BEND
16	INSTALL 8" CAP
17	*MEG A LUG* ALL FITTINGS AND JOINTS FROM TEE TO FIRE HYDRANT
18	INSTALL 8" GATE VALVE AND VALVE BOX, PER COA STD. DTL. 2326, 2328, AND/OR 2329
19	INSTALL 8" GATE VALVE AND VALVE BOX, PER COA STD. DTL. 2326, 2328
20	INSTALL FIRE HYDRANT, PER COA STD. DTL. 2340
21	INSTALL SINGLE WATER SERVICE CONNECTION
22	INSTALL DOUBLE WATER SERVICE CONNECTION
23	DEFLECT PIPE

SEWER CONSTRUCTION NOTES

I.D.#	DESCRIPTION
1	INSTALL 6" SEWER PER STD. SPEC. SEC. 901
2	INSTALL 4" DIA. SEWER MANHOLE TYPE "E", PER COA STD. DTL. 2102
3	INSTALL 8" DIA. SEWER MANHOLE TYPE "E", PER COA STD. DTL. 2102
4	INSTALL 4" SEWER SERVICE, PER COA STD. DTL. 2125. INSTALL DOUBLE CLEANOUT 5' FROM BUILDING. SEE DETAIL ON SHEET C-500.
5	DEFLECT PIPE
6	INSTALL SINGLE CLEANOUT PER DETAIL SHEET C-500
7	INSTALL DOUBLE CLEANOUT PER DETAIL SHEET C-500

STORM DRAIN CONSTRUCTION NOTES

I.D.#	DESCRIPTION
1	INSTALL 24" RCP STORM DRAIN PIPE
2	INSTALL 30" RCP STORM DRAIN PIPE
3	INSTALL TYPE D CATCH BASIN SINGLE GRATE
4	INSTALL CATCH BASIN DOUBLE GRATE
5	INSTALL 4" DIA. MANHOLE TYPE "E", PER COA STD. DTL. 2102

DESIGNED BY	DATE
JDV	6.12.2020
DRAWN	CHECKED
JDV	SG
PROJECT	DATE
COMMUNITY DESIGN SOLUTIONS	6.12.2020
897 JEFFERSON STREET SUITE 101	
WWW.RESPEC.COM PHONE: 605.953.9718	

RESPEC COMMUNITY DESIGN SOLUTIONS

PRELIMINARY NOT FOR CONSTRUCTION 6/2020

THIS DRAWING IS INCOMPLETE AND NOT TO BE USED FOR CONSTRUCTION UNLESS IT IS STAMPED, SIGNED AND DATED

PROJECT NAME: SONATA TRAILS UNIT 4 APARTMENTS

SHEET TITLE: CONCEPTUAL SITE UTILITY PLAN

SUBMITTED FOR: DRB SITE PLAN

SHEET NUMBER: C-112

NAME: L:\Active Projects\04022 Sonata Trails Unit 4 Apartments\3_DWG\Onsite Plan Set\Sheets\04022 C-204 SITE UTILITY PLAN.dwg PLOT DATE: Jun 18, 2020 1:33pm © Copyright 2020 RESPEC - All Rights Reserved

