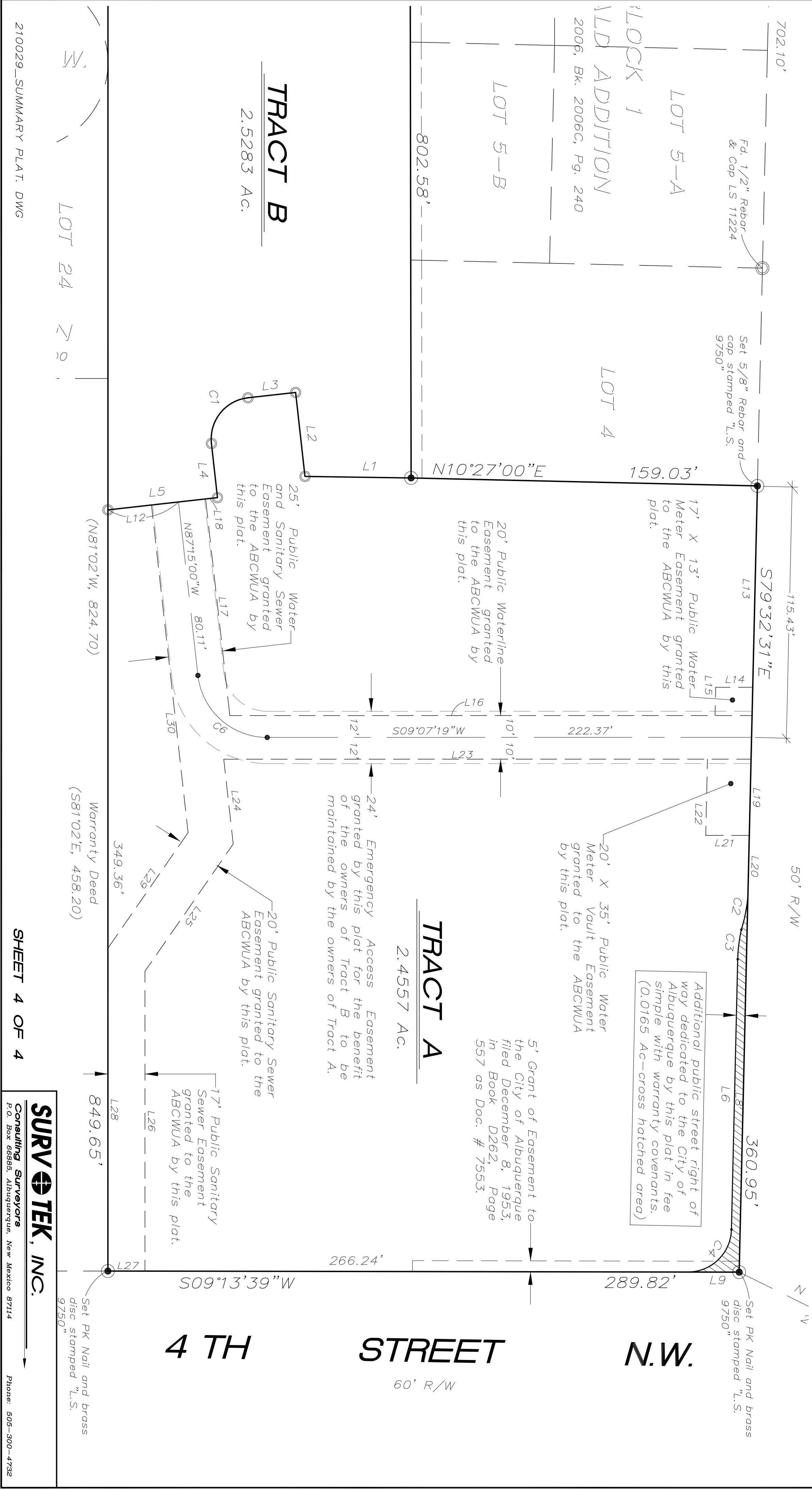


LINE	LENGTH	BEARING
L12	32.61	N02°45'00"E
L13	92.43	S79°32'31"E
L14	172.00	S09°07'19"W
L15	13.00	S79°32'31"E
L16	222.76	S09°07'19"W
L17	100.07	N87°15'00"W
L18	5.50	N02°45'00"E
L19	35.01	S79°32'31"E
L20	28.30	S79°32'31"E
L21	20.01	S09°07'19"W
L22	35.01	N79°32'31"W
L23	242.10	S09°07'19"W
L24	39.18	S87°15'00"E
L25	71.08	S46°06'50"E
L26	137.62	S80°51'58"E
L27	17.00	S09°13'39"W
L28	148.18	N80°51'58"W
L29	64.57	N46°06'50"W
L30	151.31	N87°15'00"W

CURVE	LENGTH	RADIUS	TANGENT	CHORD	CHORD BEARING	DELTA
C6	46.71'	32.00'	28.63'	42.67'	N50°56'09"E	83°37'41"

**PLAT OF**  
**TRACTS A AND B**  
**CALLE CUARTA**

(BEING A REPLAT OF LOTS 1 THRU 3, BLOCK 1, FITZGERALD ADDITION AND TRACTS 90-C AND 90-B-2, M.R.G.C.D. PROPERTY MAP NO. 33) WITHIN  
**THE TOWN OF ALBUQUERQUE GRANT**  
**PROJECTED SECTION 5, TOWNSHIP 10 NORTH, RANGE 3 EAST**  
**NEW MEXICO PRINCIPAL MERIDIAN**  
**CITY OF ALBUQUERQUE**  
**BERNALILLO COUNTY, NEW MEXICO**  
 AUGUST, 2021



Additional public street right of way dedicated to the City of Albuquerque by this plat in fee simple with warranty covenants. (0.0165 Ac—cross hatched area)

5' Grant of Easement to the City of Albuquerque filed December 8, 1953, in Book D262, Page 557 as Doc. # 7553.

24' Emergency Access Easement granted by this plat for the benefit of the owners of Tract B to be maintained by the owners of Tract A.

25' Public Water and Sanitary Sewer Easement granted to the ABCWUA by this plat.

20' Public Waterline Easement granted to the ABCWUA by this plat.

20' X 35' Public Water Meter Vault Easement granted to the ABCWUA by this plat.

20' Public Sanitary Sewer Easement granted to the ABCWUA by this plat.

17' Public Sanitary Sewer Easement granted to the ABCWUA by this plat.

Warranty Deed (S81°02'E, 458.20)

Set PK Nail and brass disc stamped "L.S. 9750"