

**PLAT OF
LOTS 1 THRU 21
CALLE CUARTA RESIDENTIAL**

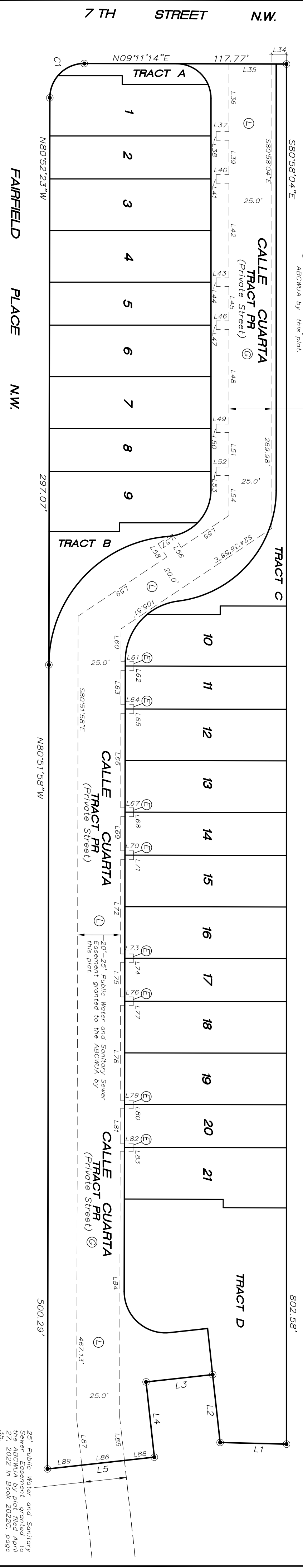
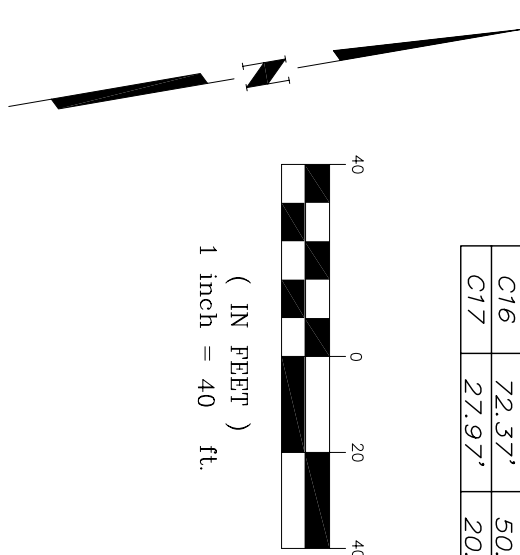
(BEING A REPLAT OF TRACT B, CALLE CUARTA)
WITHIN
THE TOWN OF ALBUQUERQUE GRANT
PROJECTED SECTION 5, TOWNSHIP 10 NORTH, RANGE 3 EAST
NEW MEXICO PRINCIPAL MERIDIAN
CITY OF ALBUQUERQUE
BERNALILLO COUNTY, NEW MEXICO
APRIL, 2022

LINE	LENGTH	BEARING
L1	38.68	S102°27'00"W
L2	39.71	N87°15'00"W
L3	39.00	S02°45'00"W
L4	44.00	S87°15'00"E
L5	62.61	S02°45'00"W
L6	32.67	S80°51'58"E
L7	22.05	N02°45'00"E
L8	27.00	S87°15'00"E
L9	57.57	N09°08'02"E
L10	5.00	S80°51'58"E
L11	36.88	N09°08'02"E
L12	42.52	N09°08'02"E
L13	5.00	N80°51'58"W
L14	38.63	N09°08'02"E
L15	37.50	N09°01'56"E
L16	5.00	S80°58'04"E
L17	49.97	N09°01'56"E
L18	41.04	N09°01'56"E
L19	5.00	N80°58'04"W
L20	45.35	N09°01'56"E
L21	3.05	S80°32'00"E
L22	42.95	N09°11'14"E
L23	15.00	N09°11'14"E
L24	6.00	N09°11'14"E
L25	53.82	N09°11'14"E
L26	10.98	S80°58'04"E
L27	26.12	S87°15'00"E
L28	30.00	N02°45'00"E
L29	34.52	N75°07'22"E
L30	389.07	S80°51'58"E
L31	30.40	S76°45'56"E
L32	16.57	S41°45'58"W
L33	25.06	S80°52'23"E
L34	8.50	S09°11'14"W
L35	25.00	S09°11'14"W
L36	39.42	S80°58'04"E
L37	7.50	S09°01'56"W
L38	5.00	S80°58'04"E
L39	20.00	S80°58'04"E
L40	7.50	S09°01'56"W
L41	5.00	S80°58'04"E
L42	55.00	S80°58'04"E
L43	7.50	S09°01'56"W
L44	5.00	S80°58'04"E
L45	20.00	S80°58'04"E

LINE	LENGTH	BEARING
L46	7.50	S09°01'56"W
L47	5.00	S80°58'04"E
L48	55.00	S80°58'04"E
L49	7.50	S09°01'56"W
L50	5.00	S80°58'04"E
L51	20.00	S80°58'04"E
L52	7.50	S09°01'56"W
L53	5.00	S80°58'04"E
L54	23.25	S80°58'04"E
L55	33.40	S24°36'58"E
L56	9.18	S65°23'02"W
L57	10.00	S24°36'58"E
L58	9.18	N65°23'02"E
L59	62.09	S24°36'58"E
L60	19.14	S80°51'58"E
L61	7.50	N09°08'02"E
L62	5.00	S80°51'58"E
L63	20.00	S80°51'58"E
L64	7.50	N09°08'02"E
L65	5.00	S80°51'58"E
L66	55.00	S80°51'58"E
L67	7.50	N09°08'02"E
L68	5.00	S80°51'58"E
L69	20.00	S80°51'58"E
L70	7.50	N09°08'02"E
L71	5.00	S80°51'58"E
L72	55.00	S80°51'58"E
L73	7.50	N09°08'02"E
L74	5.00	S80°51'58"E
L75	20.00	S80°51'58"E
L76	7.50	N09°08'02"E
L77	5.00	S80°51'58"E
L78	55.00	S80°51'58"E
L79	7.50	N09°08'02"E
L80	5.00	S80°51'58"E
L81	20.00	S80°51'58"E
L82	7.50	N09°08'02"E
L83	5.00	S80°51'58"E
L84	154.25	S80°51'58"E
L85	25.42	S87°15'00"E
L86	25.00	S02°45'00"W
L87	26.82	S87°15'00"E
L88	17.50	S02°45'00"W
L89	20.11	S02°45'00"W

CURVE	LENGTH	RADIUS	TANGENT	CHORD	CHORD BEARING	DELTA
C1	31.44'	20.00'	20.02'	28.30'	S35°50'35"E	90°03'38"
C2	94.19'	65.00'	57.94'	86.17'	N39°27'11"W	83°01'45"
C3	50.66'	35.00'	30.93'	46.35'	S39°24'08"E	82°55'39"
C4	40.39'	27.00'	25.05'	36.73'	N38°06'48"W	85°42'32"
C5	112.06'	75.00'	69.46'	101.92'	S39°03'45"E	85°16'26"
C6	40.37'	24.00'	26.83'	35.78'	N60°56'31"E	96°23'02"
C7	8.23'	20.00'	13.05'	21.86'	S42°19'14"W	66°16'00"
C8	8.23'	20.00'	4.17'	8.17'	S87°14'35"W	23°34'42"
C9	13.93'	20.00'	7.26'	13.65'	S60°55'23"E	39°54'02"
C10	17.51'	20.00'	9.36'	16.96'	S15°53'34"E	50°09'36"
C11	21.11'	27.00'	11.13'	20.57'	N58°34'21"W	44°47'25"
C12	19.28'	27.00'	10.07'	18.88'	N15°43'05"E	40°55'07"
C13	19.91'	35.00'	10.23'	19.64'	S14°13'54"E	32°35'11"
C14	30.75'	35.00'	16.45'	29.77'	S55°41'44"E	50°20'29"
C15	72.46'	50.00'	44.26'	66.28'	N39°27'11"W	83°01'45"
C16	72.37'	50.00'	44.18'	66.21'	S39°24'08"E	82°55'39"
C17	27.97'	20.00'	16.82'	25.75'	S40°47'35"E	80°08'06"

LOT NUMBER	ACREAGE
LOT 1	0.0689 AC.
LOT 2	0.0539 AC.
LOT 3	0.0647 AC.
LOT 4	0.0647 AC.
LOT 5	0.0540 AC.
LOT 6	0.0648 AC.
LOT 7	0.0648 AC.
LOT 8	0.0540 AC.
LOT 9	0.0685 AC.
LOT 10	0.0667 AC.
LOT 11	0.0539 AC.
LOT 12	0.0647 AC.
LOT 13	0.0647 AC.
LOT 14	0.0540 AC.
LOT 15	0.0648 AC.
LOT 16	0.0648 AC.
LOT 17	0.0541 AC.
LOT 18	0.0649 AC.
LOT 19	0.0649 AC.
LOT 20	0.0541 AC.
LOT 21	0.0692 AC.
TRACT A	0.0178 AC.
TRACT B	0.0372 AC.
TRACT C	0.0721 AC.
TRACT D	0.2230 AC.
TRACT PR	0.8813 AC.



EASEMENT L DETAIL

SHEET 5 OF 5

210030_SHTS 4-5. DWG

SURV TEK, INC.
Consulting Surveyors
P.O. Box 66885, Albuquerque, New Mexico 87114

Phone: 505-300-4732

25' Public Water and Sanitary Sewer Easement granted to the ABCWUA by plat filed April 27, 2022 in Book 2022C, page 35.