

**PLAT OF  
LOTS 1 THRU 21  
CALLE CUARTA RESIDENTIAL**  
(BEING A REPLAT OF TRACT B, CALLE CUARTA)  
WITHIN

**THE TOWN OF ALBUQUERQUE GRANT  
PROJECTED SECTION 5, TOWNSHIP 10 NORTH, RANGE 3 EAST  
NEW MEXICO PRINCIPAL MERIDIAN  
CITY OF ALBUQUERQUE  
BERNALILLO COUNTY, NEW MEXICO  
APRIL, 2022**

**EASEMENT LEGEND**

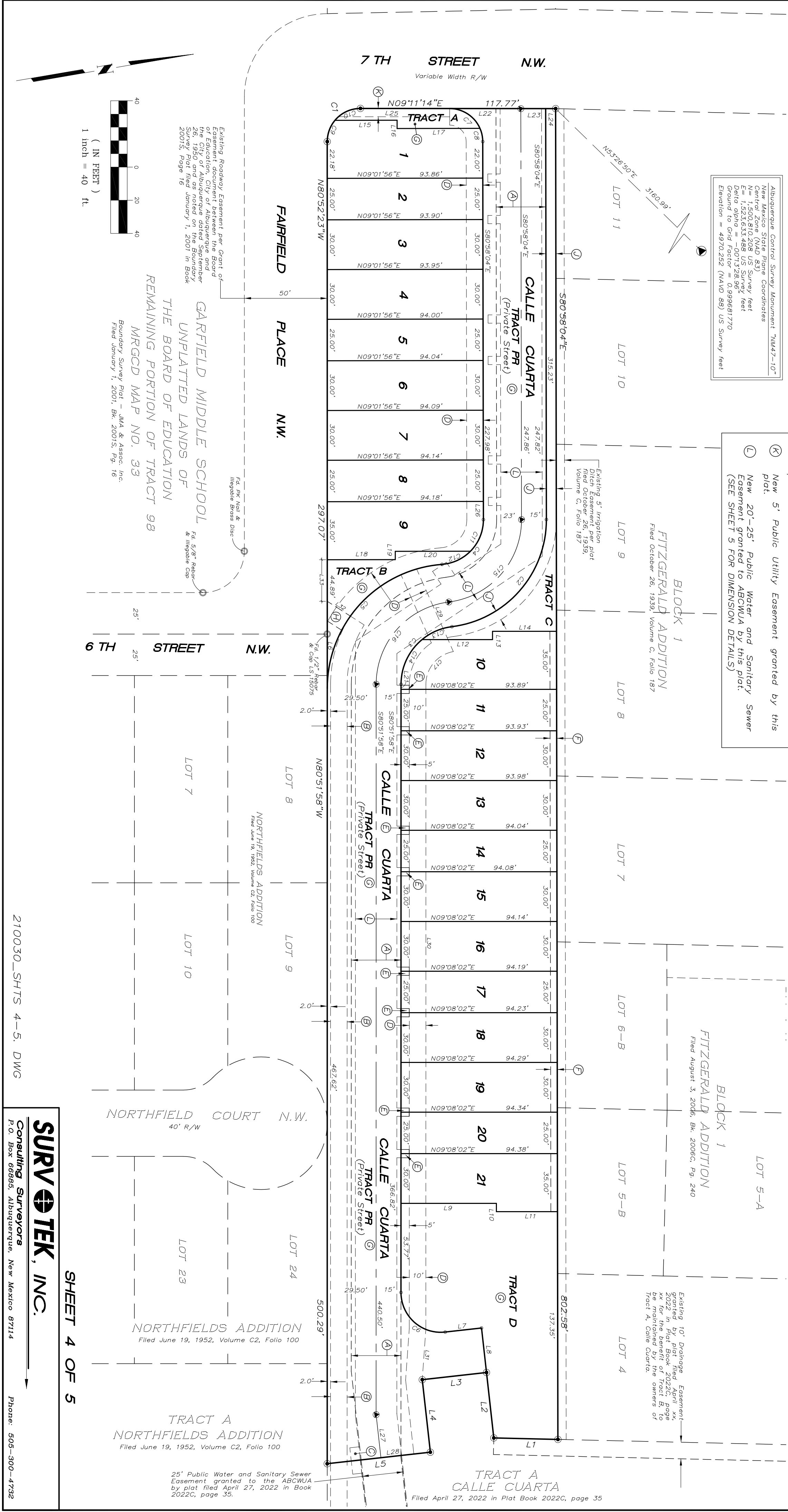
- (A) Existing Public Emergency Access, Pedestrian and Bike Route Easement granted to the City of Albuquerque by plat filed April 27, 2022 in Plat Book 2022C, Page 35. Said easement to be maintained by the Owner of Tract B until dedication to the City of Albuquerque.
- (B) New 10' Public Trail Easement granted to the City of Albuquerque by this plat. Said easement to be maintained by the Calle Cuarta Homeowners Association.
- (C) Existing 6' x 16' Public Bike Route Easement granted to the City of Albuquerque by plat filed April 27, 2022 in Plat Book 2022C, page 35
- (D) New 10' Public Utility Easement granted by this plat.
- (E) New 5' x 5' Public Water Meter Easement granted to ABCWUA by this plat. Said easement is centered on the front lot corners for Lots 10-21 as shown and noted herein.
- (F) New 4' Private Drainage Easement for the benefit of Lots 10 thru 21 granted to and to be maintained by the Calle Cuarta HOA.
- (G) New Blanket Private Drainage Easement granted to and to be maintained by the Calle Cuarta HOA.
- (H) New 10' Public Pedestrian Access Easement granted to the City of Albuquerque by this plat.
- (J) New 6' Public Utility Easement granted by this plat.
- (K) New 5' Public Utility Easement granted by this plat.
- (L) New 20'-25' Public Water and Sanitary Sewer Easement granted to ABCWUA by this plat. (SEE SHEET 5 FOR DIMENSION DETAILS)

Albuquerque Control Survey Monument "NM47--10"  
New Mexico State Plane Coordinates  
North 1,500,810.208 US Survey feet  
East 1,523,633.488 US Survey feet  
Delta alpha = -001'328.96"  
Ground to Grid Factor = 0.999681770  
Elevation = 4970.292 (NAVD 88) US Survey feet

**BLOCK 1  
FITZGERALD ADDITION**  
Filed October 26, 1939, Volume C, Folio 187

**BLOCK 1  
FITZGERALD ADDITION**  
Filed August 3, 2006, Bk. 2006C, Pg. 240

Existing 10' Drainage Easement granted by plat filed April xx, 2022 in Plat Book 2022C, Page xx for the benefit of Tract B to be maintained by the owners of Tract A, Calle Cuarta.



Existing Roadway Easement per Grant of the City of Albuquerque and the City of Albuquerque dated September 26, 1990 and as noted on the Boundary Survey of January 1, 2001 in Book 2001S, Page 16

Existing 5' Irrigation Ditch Easement per plat filed October 26, 1939, Volume C, Folio 187

Existing 10' Drainage Easement granted by plat filed April xx, 2022 in Plat Book 2022C, Page xx for the benefit of Tract B to be maintained by the owners of Tract A, Calle Cuarta.

**GARFIELD MIDDLE SCHOOL UNPLATTED LANDS OF THE BOARD OF EDUCATION REMAINING PORTION OF TRACT 98**  
MRGCD MAP NO. 33  
Boundary Survey Plat - JMA & Assoc. Inc. Filed January 1, 2001, Bk. 2001S, Pg. 16

**TRACT A NORTHFIELDS ADDITION**  
Filed June 19, 1952, Volume C2, Folio 100

**TRACT A CALLE CUARTA**  
Filed April 27, 2022 in Plat Book 2022C, page 35

**TRACT A NORTHFIELDS ADDITION**  
Filed June 19, 1952, Volume C2, Folio 100

**TRACT A NORTHFIELDS ADDITION**  
Filed June 19, 1952, Volume C2, Folio 100

210030\_SHTS 4-5. DWG

**SURV TEK, INC.**  
Consulting Surveyors  
P.O. Box 66885, Albuquerque, New Mexico 87114  
Phone: 505-300-4732

**SHEET 4 OF 5**