

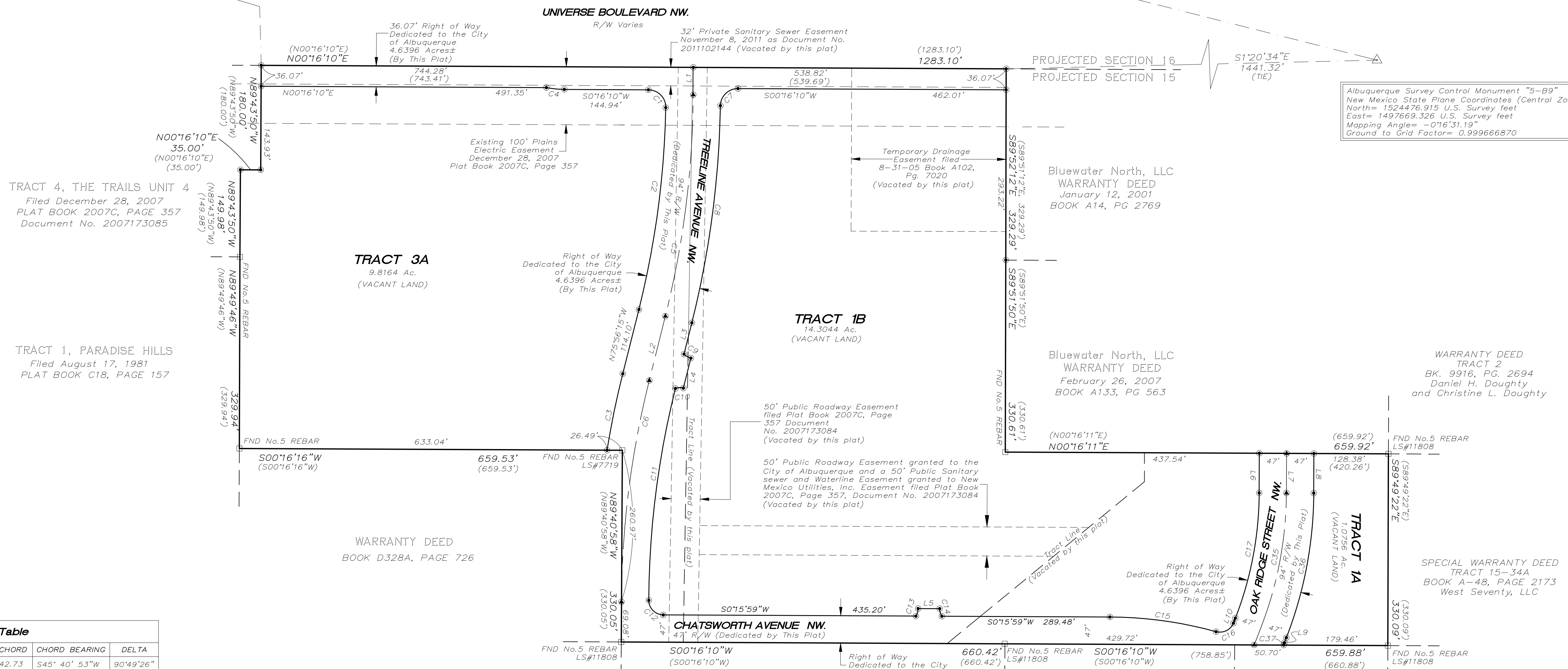
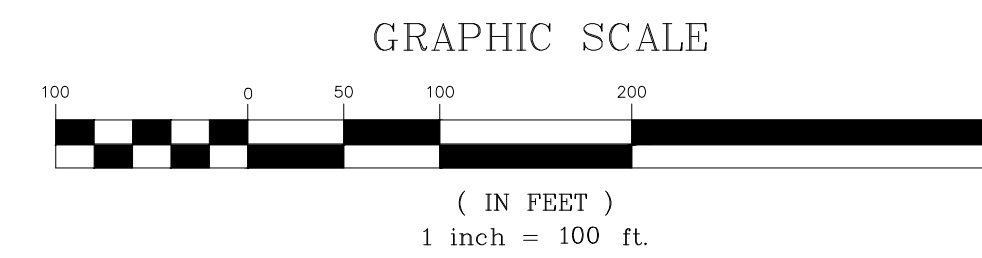
PLAT OF
TRACTS 1A, 1B AND 3A
THE TRAILS UNIT 4

(BEING A REPLAT OF TRACTS 1-3
THE TRAILS UNIT 4)

WITHIN

THE TOWN OF ALAMEDA GRANT
PROJECTED SECTION 15, TOWNSHIP 11 NORTH, RANGE 2 EAST
NEW MEXICO PRINCIPAL MERIDIAN
CITY OF ALBUQUERQUE
BERNALILLO COUNTY, NEW MEXICO
JUNE 2020

Albuquerque Survey Control Monument "2-C9"
New Mexico State Plane Coordinates (Central Zone - NAD 83)
North= 1521672.052 U.S. Survey feet
East= 1494519.241 U.S. Survey feet
Mapping Angle= -0°16'52.77"
Ground to Grid Factor= 0.999666850



TRACT 4, THE TRAILS UNIT 4
Filed December 28, 2007
PLAT BOOK 2007C, PAGE 357
Document No. 2007173085

TRACT 1, PARADISE HILLS
Filed August 17, 1981
PLAT BOOK C18, PAGE 157

Bluewater North, LLC
WARRANTY DEED
January 12, 2001
BOOK A14, PG 2769

Bluewater North, LLC
WARRANTY DEED
February 26, 2007
BOOK A133, PG 563

WARRANTY DEED
TRACT 2
BK. 9916, PG. 2694
Daniel H. Doughty
and Christine L. Doughty

WARRANTY DEED
BOOK D328A, PAGE 726

SPECIAL WARRANTY DEED
TRACT 15-34A
BOOK A-48, PAGE 2173
West Seventy, LLC

CURVE	LENGTH	RADIUS	TANGENT	CHORD	CHORD BEARING	DELTA
C1	47.56	30.00	30.43	42.73	S45° 40' 53"W	90°49'26"
C2	351.53	1553.00	176.52	350.78	N82° 25' 20"W	12°58'09"
C3	134.41	1647.00	67.24	134.38	S78° 16' 32"E	4°40'34"
C4	31.03	160.00	15.57	30.98	N5° 49' 33"E	11°06'46"
C5	385.17	1600.00	193.52	384.25	N82° 50' 02"W	13°47'35"
C6	385.17	1600.00	193.52	384.25	S82° 50' 03"E	13°47'35"
C7	46.79	30.00	29.66	42.19	S44° 24' 28"E	89°21'15"
C8	377.93	1647.00	189.80	377.10	N82° 30' 40"W	13°08'50"
C9	13.92	24.38	7.15	13.73	N30° 25' 01"E	32°42'31"
C10	13.91	24.38	7.15	13.72	S2° 17' 21"E	32°42'12"
C11	368.46	1553.00	185.10	367.60	S82° 49' 32"E	13°35'38"
C12	39.32	25.00	25.05	35.39	N45° 19' 19"E	90°06'39"
C13	13.59	24.37	6.98	13.42	N73° 45' 24"W	31°57'13"
C14	13.59	24.38	6.98	13.42	N74° 17' 23"E	31°57'13"
C15	185.22	697.10	93.16	184.67	S7° 52' 42"W	15°13'24"
C16	36.77	25.00	22.62	33.55	N26° 38' 56"W	84°16'39"
C17	220.41	603.00	111.45	219.19	N79° 15' 33"W	20°56'35"
C35	237.59	650.00	120.14	236.27	N79° 15' 33"W	20°56'35"
C36	254.77	697.00	128.82	253.35	N79° 15' 33"W	20°56'35"
C37	4.22	25.00	2.11	4.21	S73° 37' 06"E	9°39'41"

Line #	Length	Direction
L1	47.17	N89° 43' 50"W
L2	114.10	N75° 56' 15"W
L3	55.59	N75° 56' 15"W
L4	53.25	N75° 56' 15"W
L5	37.25	S0° 15' 59"W
L6	68.22	S89° 43' 50"E
L7	68.22	S89° 43' 50"E
L8	68.22	S89° 43' 50"E
L9	13.64	S68° 47' 15"E
L10	9.31	S68° 47' 15"E

TRACT 15-55
SPECIAL WARRANTY DEED
BOOK A-48, PAGE 2173

SPECIAL WARRANTY DEED
TRACT 15-33
BOOK A-48, PAGE 2173

SPECIAL WARRANTY DEED
TRACT 15-43B
BOOK A-48, PAGE 2173

SPECIAL WARRANTY DEED
TRACT 15-43A
BOOK A-48, PAGE 2173

SPECIAL WARRANTY DEED
TRACT 15-9A
BOOK A-48, PAGE 2173
West Seventy, LLC