

4.23.2025
Date

PRELIMINARY PLAT
ELEVATE ON BRIDGE
BEING A REPLAT OF TRACT A-1, BRIDGEPOINT SUBDIVISION
SITUATE WITHIN
PROJECTED SECTIONS 21 & 28, T.10N, R.2E, N.M.P.M.
TOWN OF ATRISCO GRANT
CITY OF ALBUQUERQUE
BERNALILLO COUNTY, NEW MEXICO
APRIL, 2025

LEGAL DESCRIPTION:

Tract A-1 of the Correction Plat of Bridgepoint Subdivision, as the same is shown and designated on the plat thereof recorded in the office of the County Clerk, Bernalillo County, New Mexico on October 4, 1996 in Volume 96C, Folio 418.

NOTES:

1. PLEASE SEE SHEET 3 FOR:

- A) PUBLIC WATER EASEMENTS GRANTED BY THIS PLAT
B) PUBLIC WATER & PUBLIC SEWER EASEMENT GRANTED BY THIS PLAT

2. VACATED PORTION OF 10' P.U.E.

LINE TABLE

NUM	BEARING	DISTANCE
L1	S77°21'26"E	15.00'
L2	S77°21'26"E	15.00'
L3	S77°21'26"E	25.00'
L4	N12°38'34"E	2.71'
L5	N46°07'45"E	4.86'
L6	N46°07'45"E	2.88'
L7	N46°07'45"E	1.98'
L8	N12°38'34"E	20.83'
L9	N12°38'34"E	5.64'
L10	N 5°38'42"E	45.29'
L11	N 5°38'42"E	23.12'
L12	N 5°38'42"E	22.17'
L13	N12°38'34"E	12.67'
L14	N12°38'34"E	20.23'
L15	S12°38'34"W	23.90'
L16	S12°38'34"W	20.00'
L17	N12°38'34"E	8.39'
L18	N 5°38'42"E	45.29'
L19	S 5°38'42"W	20.35'
L20	S12°38'34"W	24.94'
L21	S12°38'34"W	9.92'
L22	N77°21'26"W	17.23'
L23	N12°38'34"E	17.11'
L24	S12°38'34"W	27.99'
L25	N12°38'34"E	41.89'
L26	S31°03'01"E	36.30'
L27	S12°38'19"W	9.50'
L28	S77°21'41"E	16.51'
L29	S12°38'34"W	27.02'
L30	S50°17'51"E	11.94'
L31	S12°38'34"W	20.48'
L32	S77°21'13"E	17.42'
L33	N12°38'47"E	7.50'
L34	N12°38'47"E	7.50'
L35	S77°21'13"E	17.41'
L36	S12°38'34"W	20.62'
L37	S12°38'34"W	12.81'

EASEMENT TABLE

NUM	DELTA	ARC	RADIUS	BEARING	DISTANCE
C1	90°53'40"	7.93'	5.00'	N32°19'15"W	7.13'
C2	89°44'19"	23.49'	15.00'	N57°44'12"E	21.16'
C3	19°09'00"	20.26'	60.63'	N31°51'29"E	20.17'
C4	23°50'46"	4.16'	10.00'	S34°12'22"W	4.13'
C5	33°29'11"	5.84'	10.00'	N29°23'10"E	5.76'
C6	6°59'52"	27.48'	225.00'	N 9°08'38"E	27.46'
C7	5°42'12"	22.40'	225.00'	N 9°47'28"E	22.39'
C8	1°17'40"	5.08'	225.00'	N 6°17'32"E	5.08'
C9	6°59'52"	21.37'	175.00'	S 9°08'38"W	21.36'
C10	1°58'21"	6.03'	175.00'	S 6°37'53"W	6.02'
C11	5°01'30"	15.35'	175.00'	S10°07'49"W	15.34'
C12	83°23'20"	25.29'	17.38'	S54°20'14"W	23.11'
C13	171°39'36"	175.64'	58.63'	N 1°51'42"E	116.94'
C14	46°48'32"	47.89'	58.63'	S36°02'50"W	46.57'
C15	0°30'07"	0.51'	58.63'	S59°12'02"W	0.51'
C16	19°14'50"	19.69'	58.63'	S49°19'34"W	19.60'
C17	23°02'58"	23.58'	58.63'	S28°10'40"W	23.43'
C18	4°00'36"	4.10'	58.63'	S14°38'52"W	4.10'
C19	6°59'52"	27.48'	225.00'	S 9°08'38"W	27.46'
C20	5°00'02"	19.64'	225.00'	S10°08'33"W	19.63'
C21	1°59'50"	7.84'	225.00'	S 6°38'37"W	7.84'
C22	6°59'52"	21.37'	175.00'	N 9°08'38"E	21.36'
C23	1°04'08"	3.27'	175.00'	N 6°10'46"E	3.27'
C24	5°55'43"	18.11'	175.00'	N 9°40'42"E	18.10'
C25	2°05'44"	0.91'	25.00'	N78°24'10"W	0.91'
C26	90°00'08"	39.27'	25.00'	S57°38'38"W	35.36'
C27	87°33'13"	38.20'	25.00'	S56°03'06"W	34.59'

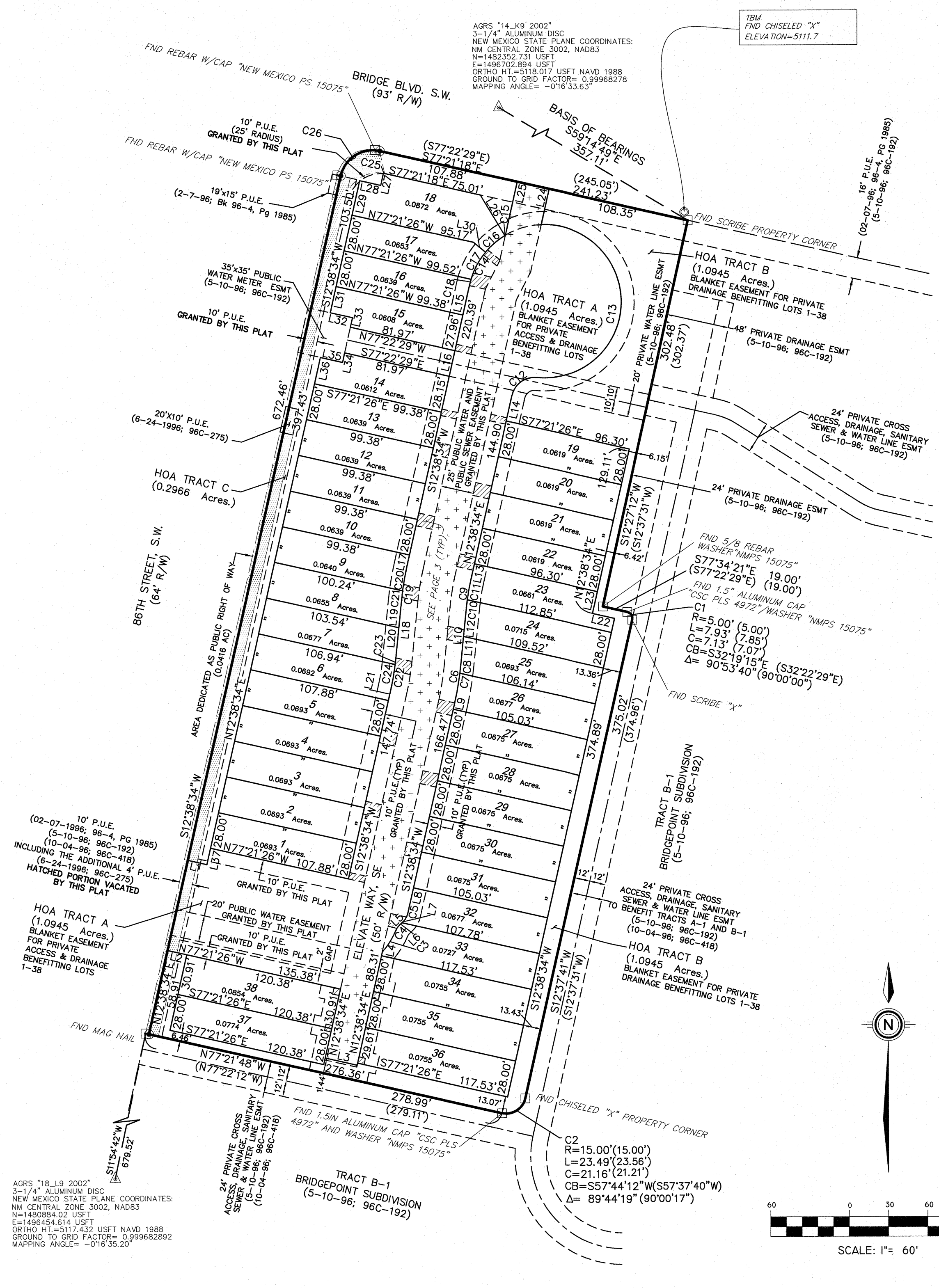
PLAT GEOMETRY

Monument Legend

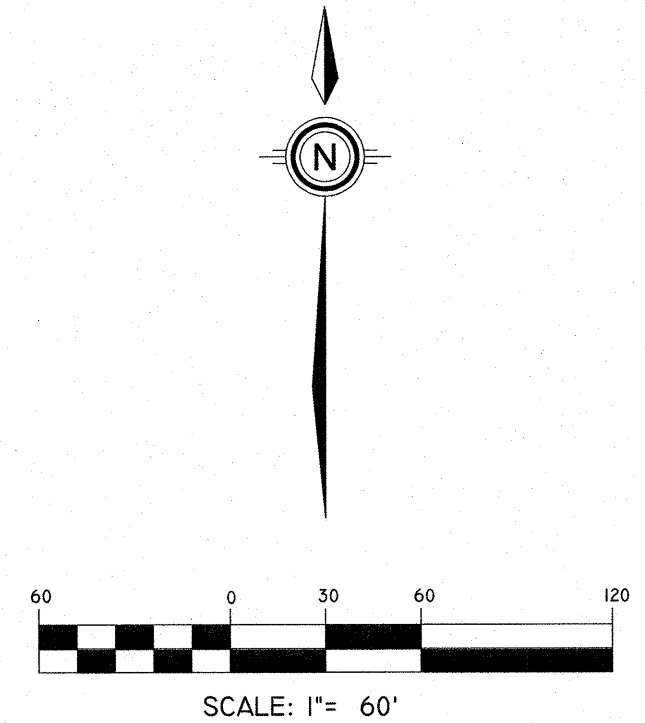
- △ FND CONTROL MONUMENT (AS NOTED)
□ FND PROPERTY CORNER (AS NOTED)
○ FND CHISELED OR SCRIBED "X"
● SET 5/8" REBAR W/YELLOW PLASTIC CAP OR NAIL STAMPED "PATRICK PS12651"
• EASEMENT POINT (NOT SET)

PRELIMINARY PLAT
ELEVATE ON BRIDGE

DWG PATH:	4/23/2025 F:\N1462 - Gallo Partners\SURVEY\ELEVATE ON BRIDGE PRELIMINARY SUBDIVISION PLAT.dwg
DATE:	03/11/2025
DRAWN:	AHM
REVIEW:	
JOB NO.:	N1462-01
PRIMO AND NINO	
CREW:	LRC/DCA/JAK/NSV
SCALE:	1"=30'
DATE:	03/11/2025
DRAWN:	AHM
REVIEW:	
JOB NO.:	N1462-01
Community Sciences Corporation	
Land Surveying	(505) 897.0000
2	of 4




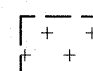

PRELIMINARY PLAT
ELEVATE ON BRIDGE
BEING A REPLAT OF TRACT A-1, BRIDGEPOINT SUBDIVISION
SITUATE WITHIN
PROJECTED SECTIONS 21 & 28, T.10N, R.2E, N.M.P.M.
TOWN OF ATRISCO GRANT
CITY OF ALBUQUERQUE
BERNALILLO COUNTY, NEW MEXICO
APRIL, 2025



EASEMENT LINE TABLE		
NUM	BEARING	DISTANCE
L1	N 5°38'42"E	45.29'
L2	N27°16'49"E	23.74'
L3	S12°38'34"W	20.25'
L4	N12°38'34"E	41.88'
L5	N 5°38'42"E	45.29'
L6	N27°16'49"E	23.74'
L7	S12°38'34"W	37.36'
L8	S12°38'34"W	27.98'






EASEMENT CURVE TABLE					
NUM	DELTA	ARC	RADIUS	BEARING	DISTANCE
C1	6°59'52"	22.90'	187.50'	N 9°08'38"E	22.89'
C2	6°59'52"	25.95'	212.50'	S 9°08'38"W	25.94'
C3	6°59'52"	25.95'	212.50'	N 9°08'38"E	25.94'
C4	6°59'52"	22.90'	187.50'	S 9°08'38"W	22.89'

NOTES:

- PLEASE SEE SHEET 3 FOR:
 -  PUBLIC WATER EASEMENTS GRANTED BY THIS PLAT
 -  PUBLIC WATER & PUBLIC SEWER EASEMENT GRANTED BY THIS PLAT
-  VACATED PORTION OF 10' P.U.E.


EASEMENT SHEET

Monument Legend

-  FND CONTROL MONUMENT (AS NOTED)
-  FND PROPERTY CORNER (AS NOTED)
-  FND CHISELED OR SCRIBED "X"
-  SET 5/8" REBAR W/YELLOW PLASTIC CAP OR NAIL STAMPED "PATRICK PS12651"
-  EASEMENT POINT (NOT SET)

PRELIMINARY PLAT
ELEVATE ON BRIDGE

DWG PATH: 4/23/2025 F:\N1462 - Gallo Partners\SURVEY\ELEVATE ON BRIDGE PRELIMINARY SUBDIVISION PLAT.dwg	
GPS: PRIMO AND NINO	
CREW: LRC/DCA/JAK/NSV	
SCALE: 1"=60'	
DATE: 03/11/2025	
DRAWN: AHM	REVIEW: DKS
JOB NO: N1462-01	



**Community
Sciences
Corporation**


Land Surveying
(505) 897.0000

3
of
4

AGRS "18_L9 2002"
3-1/4" ALUMINUM DISC
NEW MEXICO STATE PLANE COORDINATES:
NM CENTRAL ZONE 3002, NAD83
N=1480884.02 USFT
E=1496454.614 USFT
ORTHO HT.=5117.432 USFT NAVD 1988
GROUND TO GRID FACTOR= 0.999682892
MAPPING ANGLE= -0°16'35.20"

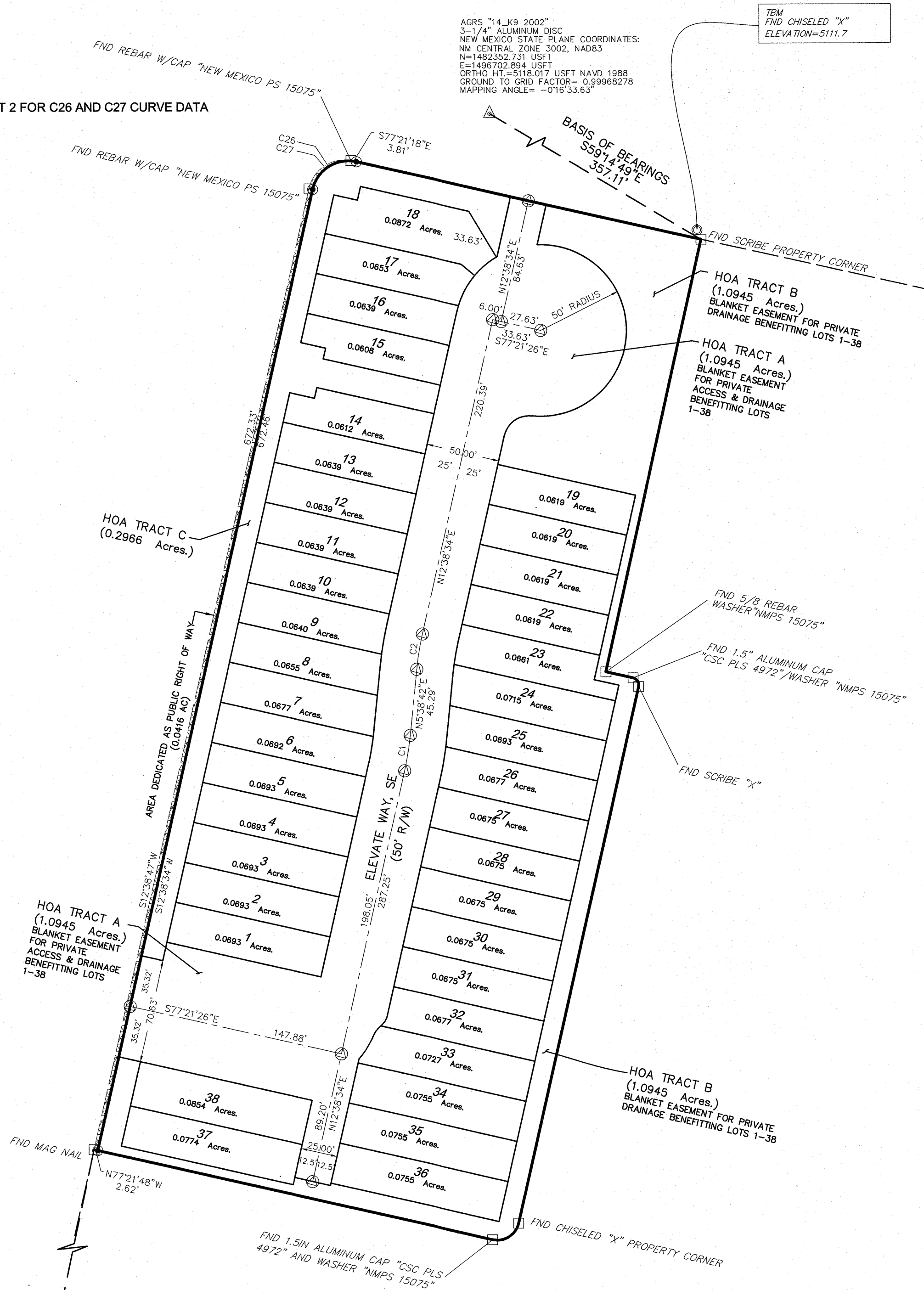
AGRS "14_K9 2002"
3-1/4" ALUMINUM DISC
NEW MEXICO STATE PLANE COORDINATES:
NM CENTRAL ZONE 3002, NAD83
N=1482352.731 USFT
E=1496702.894 USFT
ORTHO HT.=5118.017 USFT NAVD 1988
GROUND TO GRID FACTOR= 0.99968278
MAPPING ANGLE= -0°16'33.63"

TBM
FND CHISELED "X"
ELEVATION=5111.7

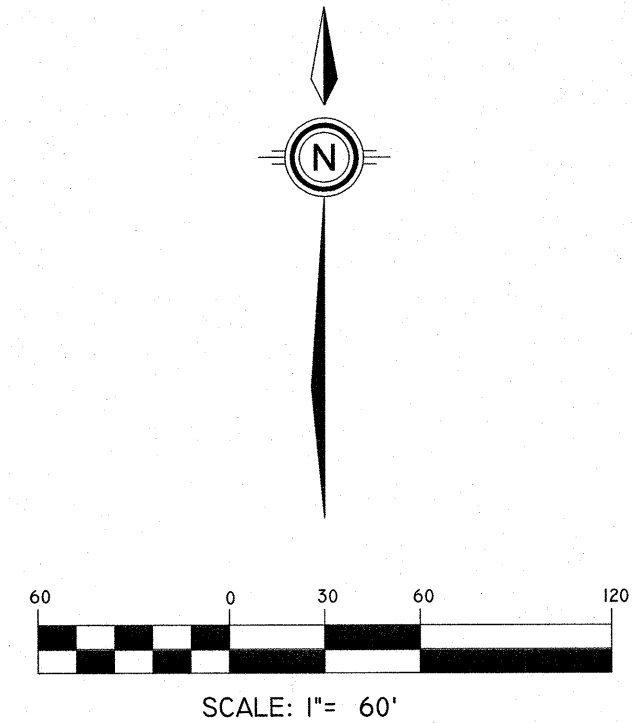
-  EASEMENT TABLE
- A 5'x12.5' PUBLIC WATER EASEMENT
CENTERED ON LOT LINE UNLESS SHOWN OTHERWISE
GRANTED BY THIS PLAT
 - B 10'x12.5' PUBLIC WATER EASEMENT
CENTERED ON LOT LINE UNLESS SHOWN OTHERWISE
GRANTED BY THIS PLAT
 - C 5' WIDE PUBLIC WATER EASEMENT
CENTERED ON LOT LINE
DIMENSIONED (AS SHOWN HEREON)
GRANTED BY THIS PLAT
 - D 10' WIDE PUBLIC WATER EASEMENT
CENTERED ON LOT LINE
DIMENSIONED (AS SHOWN HEREON)
GRANTED BY THIS PLAT
 - E 5'x5' PUBLIC WATER EASEMENT
CENTERED ON LOT UNLESS SHOWN OTHERWISE
GRANTED BY THIS PLAT
 - F 10'x5' PUBLIC WATER EASEMENT
CENTERED ON LOT UNLESS SHOWN OTHERWISE
GRANTED BY THIS PLAT

NOTE:

1. PLEASE SEE SHEET 2 FOR C26 AND C27 CURVE DATA



PRELIMINARY PLAT
ELEVATE ON BRIDGE
BEING A REPLAT OF TRACT A-1, BRIDGEPOINT SUBDIVISION
SITUATE WITHIN
PROJECTED SECTIONS 21 & 28, T.10N, R.2E, N.M.P.M.
TOWN OF ATRISCO GRANT
CITY OF ALBUQUERQUE
BERNALILLO COUNTY, NEW MEXICO
APRIL, 2025



CENTERLINE CURVE TABLE

NUM	DELTA	ARC	RADIUS	BEARING	DISTANCE
C1	6°59'52"	24.43'	200.00'	N 9°08'38"E	24.41'
C2	6°59'52"	24.43'	200.00'	S 9°08'38"W	24.41'

PRIVATE STREET CENTERLINE SHEET

Monument Legend

- FND CONTROL MONUMENT (AS NOTED)
- FND PROPERTY CORNER (AS NOTED)
- FND CHISELED OR SCRIBED "X"
- SET 5/8" REBAR W/YELLOW PLASTIC CAP OR NAIL STAMPED "PATRICK PS12651"
- EASEMENT POINT (NOT SET)
- CENTERLINE MONUMENTS

PRELIMINARY PLAT
ELEVATE ON BRIDGE

DWG PATH: 4/23/2025 F:\N1462 - Gallo Partners\SURVEY\ELEVATE ON BRIDGE PRELIMINARY SUBDIVISION PLAT.dwg	PRIMO AND NINO	4
CREW: LRC/DCA/JAK/NSV	Community Sciences Corporation	of
SCALE: 1"=60'	Land Surveying	4
DATE: 03/11/2025	(505) 897.0000	
DRAWN: AHM	REVIEW: DKS	
JOB NO: N1462-01		