

ADMINISTRATIVE AMENDMENT

FILE # _____ PROJECT # _____

APPROVED BY

DATE

CABQMaps - Advanced Map Viewer 2.0

Search...

PERMITS

Sign in



I want to...

Tools

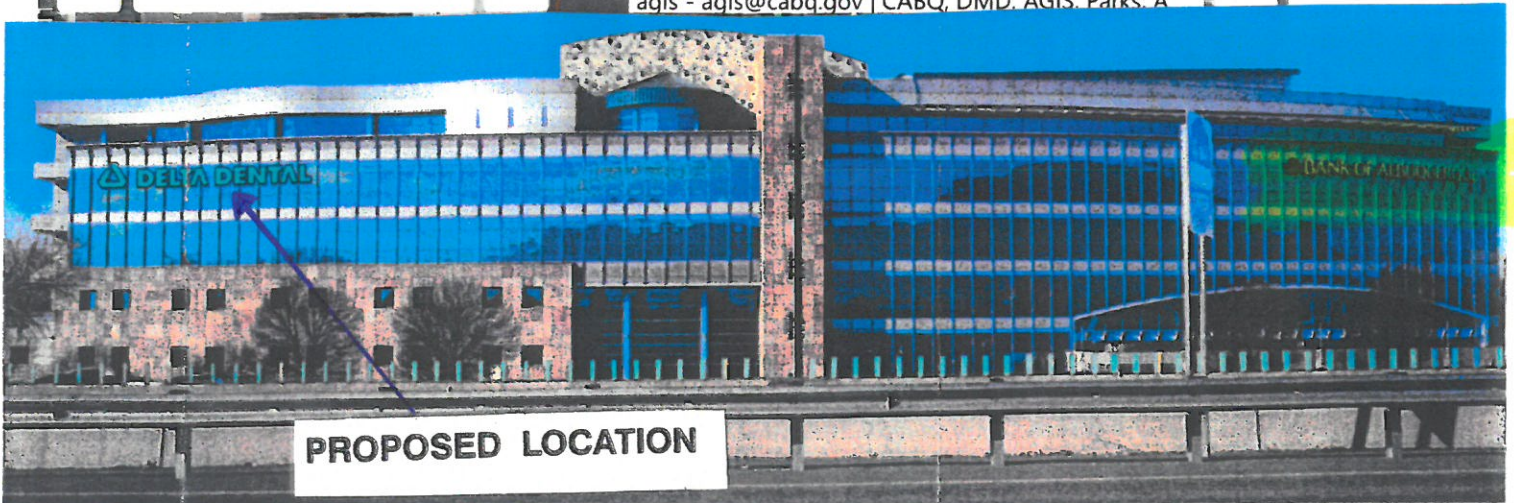
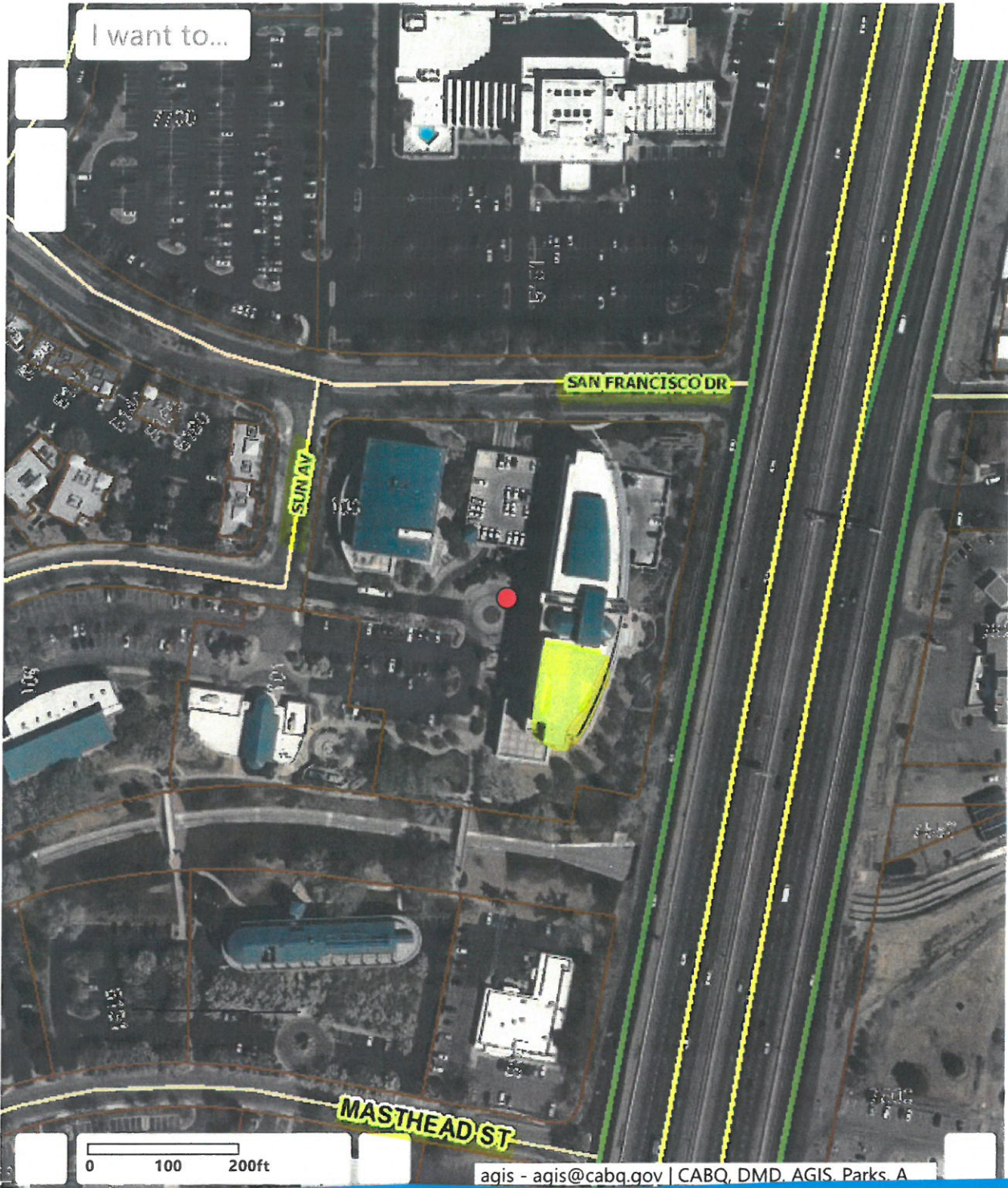
DELTA DENTAL
100 SUN AV N.E.
Albuquerque N.M. 87109

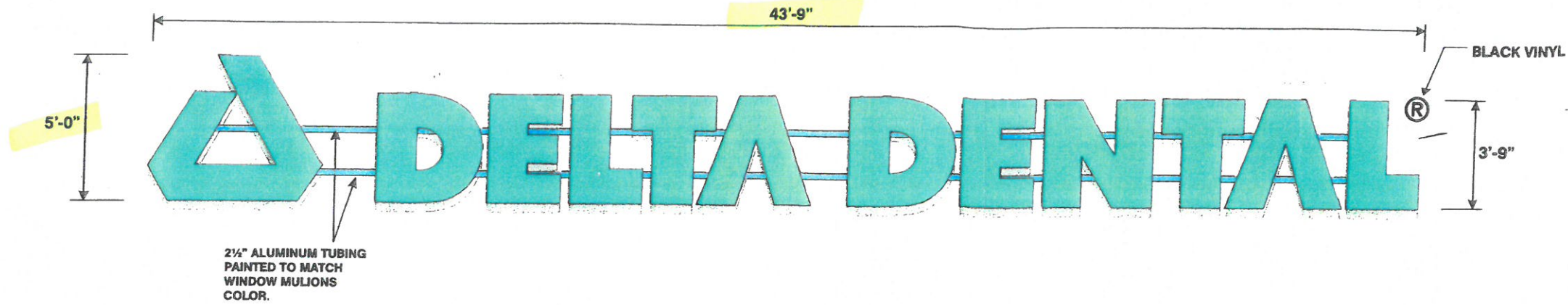
533 AD

BCSO beats obtained from Bernalillo County GIS

SUN PLAZA
87109

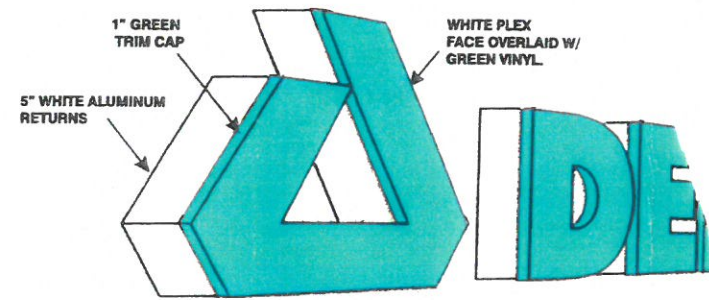
World St...



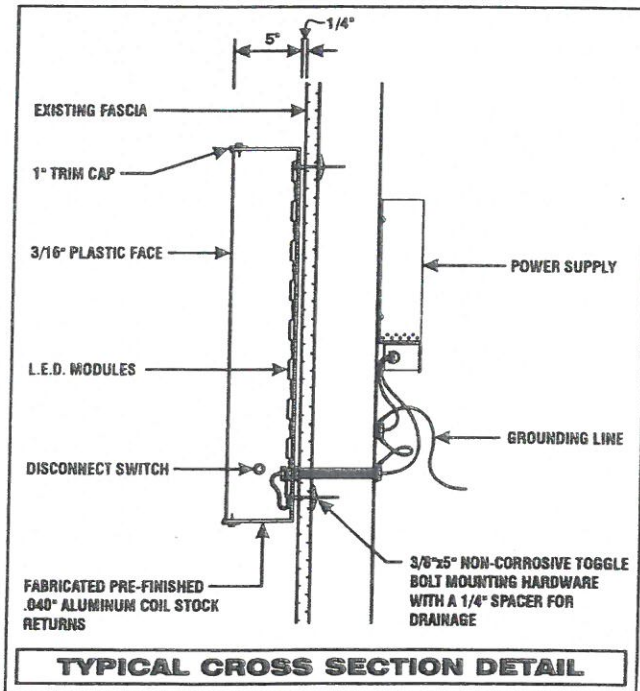


ILLUMINATED CHANNEL LETTERS DISPLAY

- ALUMINUM BACKS W/ 5" ALUMINUM RETURNS PAINTED WHITE.
- WHITE PLEX FACES OVERLAID W/ 3630-156 VIVID GREEN VINYL, 2" GREEN TRIM CAP.
- INTERNALLY ILLUMINATED W/ WHITE L.E.D.s, REMOTE POWER SUPPLY.



PERSPECTIVE VIEW



PROPOSED LOCATION

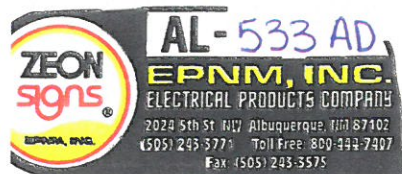
ELECTRICAL LOAD
 (1.26) Amps @ 120 Volts
ELECTRICAL REQ'MTS
 (1) 20 Amp/120 Volt Circuits

LED Specifications:
 1. (2) BITRO - ASU-60-12U
 60 Watt LED Power Supply
 2. (109 Each) Bitro TriMax
 Pure White LEDs (.69w ea)
 48 Lumens Per Module

STANDARD LETTER NOTES:
 1. Sufficient Primary Circuit In Vicinity Of Sign By Others.
 2. Letter To Letter Wiring & Final Primary Hook-up By Sign Installer, Where Allowed By Local Codes.
 3. Sign Shall Be U.L. Listed.
 4. Mounting Hardware By Sign Installer.
 5. Full Size Drilling Template Furnished With Sign.

Note: This sign is intended to be installed in accordance with the requirements of Article 600 of the National Electrical Code and/or other applicable local codes. This includes proper grounding and bonding of the sign.

Building Fascia: 5625¢
 Sign: 218.7 ¢
 Ratio: 3.8%



DELTA DENTAL
 100 SUN Ave N.E.
 ALBUQUERQUE N.M.
 87109

EXHIBIT I

APPROVED SIGNAGE

ILLUMINATED CHANNEL LETTERS DISPLAY

- ALUMINUM BACKS W/ 1/2" ALUMINUM RETURN PAINTED WHITE
- WHITE PLEX FACES OVERLAD W/ 9000-100 W/HD GREEN VINYL, 1/2" GREEN TRIM CAP
- INTERNALLY ILLUMINATED W/ WHITE LED & RESOTE POWER SUPPLY

LETTER DETAIL

COATED GLASS WINDOW
MULTILAYER
1" TRIM CAP
1/4" PLEX FACES
LED MODULES
LED POWER SUPPLY
CONDENSED INSIDE LETTERS
0.005" DIA LED
2 1/2" X 1/4" ALUMINUM TUBING
POLY-CATED PRO-FINISHED 3003 ALUMINUM COR. STOCK RETURN

PROPOSED LOCATION

PHOTO REPRODUCTION IS FOR ILLUSTRATION ONLY AND IS NOT TO SCALE
SEE SCALING DRAWINGS FOR ACTUAL PRODUCTION SIZE.

AL-ERNIM, INC.
11111
11111
11111

THIS DESIGN IS THE EXCLUSIVE PROPERTY OF EPDM, INC. AND CANNOT BE REPRODUCED EITHER IN WHOLE OR IN PART WITHOUT THEIR WRITTEN CONSENT.

PLEASE CONSULT WITH THE ARCHITECT FOR THE MOST APPROPRIATE LOCATION AND SIZE OF THE SIGNAGE. THE ARCHITECT SHALL BE RESPONSIBLE FOR THE FINAL INSTALLATION OF THE SIGNAGE.

TITLE: DELTA DENTAL @ SUN PLACE
SCALE: 1/4" = 1'-0"
DATE: 08/11/11
DRAWN BY: K. AND

SCALE: 1/4" = 1'-0"
DATE: 08/11/11
DRAWN BY: K. AND

APPROVED FOR PRODUCTION
DATE: 08/11/11

1-800-235-2355
1-800-235-2355